

## Infant mortality

### King County, 2008-2012 average

Description: Deaths in the first year of life

Source: *Linked Birth-Death Certificate Data, Washington State Department of Health, Center for Health Statistics*

**Most recent data (2012): 4.1 deaths per 1,000 live births in King County, including 102 infants.**

	Rate	Lower CI	Upper CI	Count per Year
<b>King County (all live births)</b>	4.1	3.7	4.4	101
<b>Mother's Age</b>				
<18	5.7 <sup>§</sup>	2.4	11.1	2
18-24	6.4	5.4	7.6	26
25-29	3.7	3.1	4.5	24
30-34	3.2	2.6	3.8	26
35-39	3.6	2.9	4.4	17
40+	4.8	3.3	6.9	6
<b>Race/Ethnicity</b>				
AIAN	7.0 <sup>§</sup>	2.8	14.3	1
Asian	3.1	2.5	3.9	15
Black	7.0	5.5	8.8	14
Hispanic	4.3	3.4	5.4	15
Multiple	7.3	5.0	10.2	7
NHPI	4.7 <sup>§</sup>	2.2	8.9	2
White NH	3.4	3.0	3.9	46
<b>Neighborhood Poverty</b>				
High	6.0	5.0	7.1	24
Medium	3.9	3.5	4.3	61
Low	2.9	2.3	3.7	15
<b>Region</b>				
East	2.9	2.3	3.5	18
North	2.8	1.7	4.3	4
Seattle	4.0	3.4	4.7	29
South	4.9	4.3	5.6	50

#### Notes:

N/A: Not available

\* Too few cases to protect confidentiality and/or report reliable rates

§ Too few cases to meet precision standard, interpret with caution

CI is 95% Confidence Interval

Rate = Deaths per 1,000 live births

NH = non-Hispanic

Prepared By: Public Health - Seattle & King County;



Assessment, Policy Development, & Evaluation, 1/2015

**Infant mortality by health reporting areas  
King County, 2008-2012 average**

Source: Linked Birth-Death Certificate Data, Washington State Department of Health, Center for Health Statistics

Health Reporting Area	Rate	Lower CI	Upper CI	Count per Year
<b>King County</b>	4.1	3.7	4.4	101
<b>Auburn</b>	3.6	2.1	5.7	3
Auburn-North	2.7 <sup>§</sup>	1.1	5.5	1
Auburn-South	4.6 <sup>§</sup>	2.2	8.4	2
Bear Creek/Carnation/Duvall	3.1 <sup>§</sup>	1.4	5.8	2
<b>Bellevue</b>	3.1	2.0	4.6	5
Bellevue-Central	2.4 <sup>§</sup>	1.0	5.0	1
Bellevue-NE	4.1 <sup>§</sup>	1.9	7.7	2
Bellevue-South	*	*	*	*
Bellevue-West	3.3 <sup>§</sup>	1.1	7.6	1
Black Diamond/Enumclaw/SE County	6.2	3.4	10.4	3
Bothell/Woodinville	*	*	*	*
Burien	4.5	2.6	7.3	3
Covington/Maple Valley	4.3	2.4	7.2	3
Des Moines/Normandy Park	4.5 <sup>§</sup>	2.2	8.3	2
East Federal Way	2.3 <sup>§</sup>	0.8	5.3	1
Fairwood	5.6 <sup>§</sup>	2.4	11.0	2
<b>Federal Way</b>	6.5	4.7	8.8	9
Fed Way-Central/Military Rd	7.1	4.8	10.1	6
Fed Way-Dash Pt	5.5	2.9	9.4	3
Issaquah	2.9 <sup>§</sup>	1.2	6.0	1
Kenmore/Lake Forest Park	3.1 <sup>§</sup>	1.1	6.6	1
<b>Kent</b>	5.9	4.4	7.6	11
Kent-East	6.4	3.7	10.4	3
Kent-SE	4.0	2.4	6.3	4
Kent-West	8.6	5.4	13.0	4
<b>Kirkland</b>	2.2 <sup>§</sup>	1.1	3.8	2
Kirkland	2.5 <sup>§</sup>	1.1	4.9	2
Kirkland North	*	*	*	*
Mercer Isle/Pt Cities	*	*	*	*
Newcastle/Four Creeks	4.9 <sup>§</sup>	2.0	10.1	1
North Highline	7.7 <sup>§</sup>	3.8	13.7	2
Redmond	3.3	1.8	5.4	3
<b>Renton</b>	4.0	2.8	5.6	7
Renton-East	3.2 <sup>§</sup>	1.4	6.2	2
Renton-North	3.8 <sup>§</sup>	1.7	7.2	2
Renton-South	4.7	2.8	7.4	4
Sammamish	2.4 <sup>§</sup>	0.9	5.2	1
SeaTac/Tukwila	4.7	2.8	7.3	4
<b>Seattle</b>	4.0	3.4	4.7	29
Ballard	3.6 <sup>§</sup>	1.8	6.2	2
Beacon/Georgetown/S Park	5.8	3.3	9.4	3
Capitol Hill/Eastlake	2.8 <sup>§</sup>	0.9	6.4	1
Central Seattle	5.6	3.2	9.2	3
Delridge	5.8	3.3	9.6	3
Downtown	5.4 <sup>§</sup>	2.3	10.5	2
Fremont/Greenlake	2 <sup>§</sup>	0.8	4.4	1
NE Seattle	4.0	2.2	6.9	3
North Seattle	3.6 <sup>§</sup>	1.8	6.4	2
NW Seattle	2.4 <sup>§</sup>	1.0	5.0	1
Queen Anne/Magnolia	3.1 <sup>§</sup>	1.4	5.9	2
SE Seattle	5.3	3.1	8.5	3
West Seattle	2.8 <sup>§</sup>	1.3	5.3	2
Shoreline	3.3 <sup>§</sup>	1.5	6.2	2
Snoqualmie/N.Bend/Skykomish	2.5 <sup>§</sup>	1.0	5.1	1
Vashon Island	*	*	*	*

**Comparisons:**

Higher than King County   
Lower than King County 

**Notes:**

\* Too few cases to protect confidentiality and/or report reliable rates  
§ Too few cases to meet precision standard, interpret with caution  
CI is 95% Confidence Interval  
Rate = Deaths per 1,000 live births

## Infant mortality by comparison areas

Source: *Linked Birth-Death Certificate Data, Washington State Department of Health, Center for Health Statistics*

*The Healthy People 2020 Objective for infant mortality is 6.0.*

Place	Latest Available Year	Rate	Lower CI	Upper CI
United States	2010	6.1	N/A	N/A
Washington State	2012	5.1	4.6	5.6
<b>King County</b>	<b>2012</b>	<b>4.1</b>	<b>3.3</b>	<b>5.0</b>

### Notes:

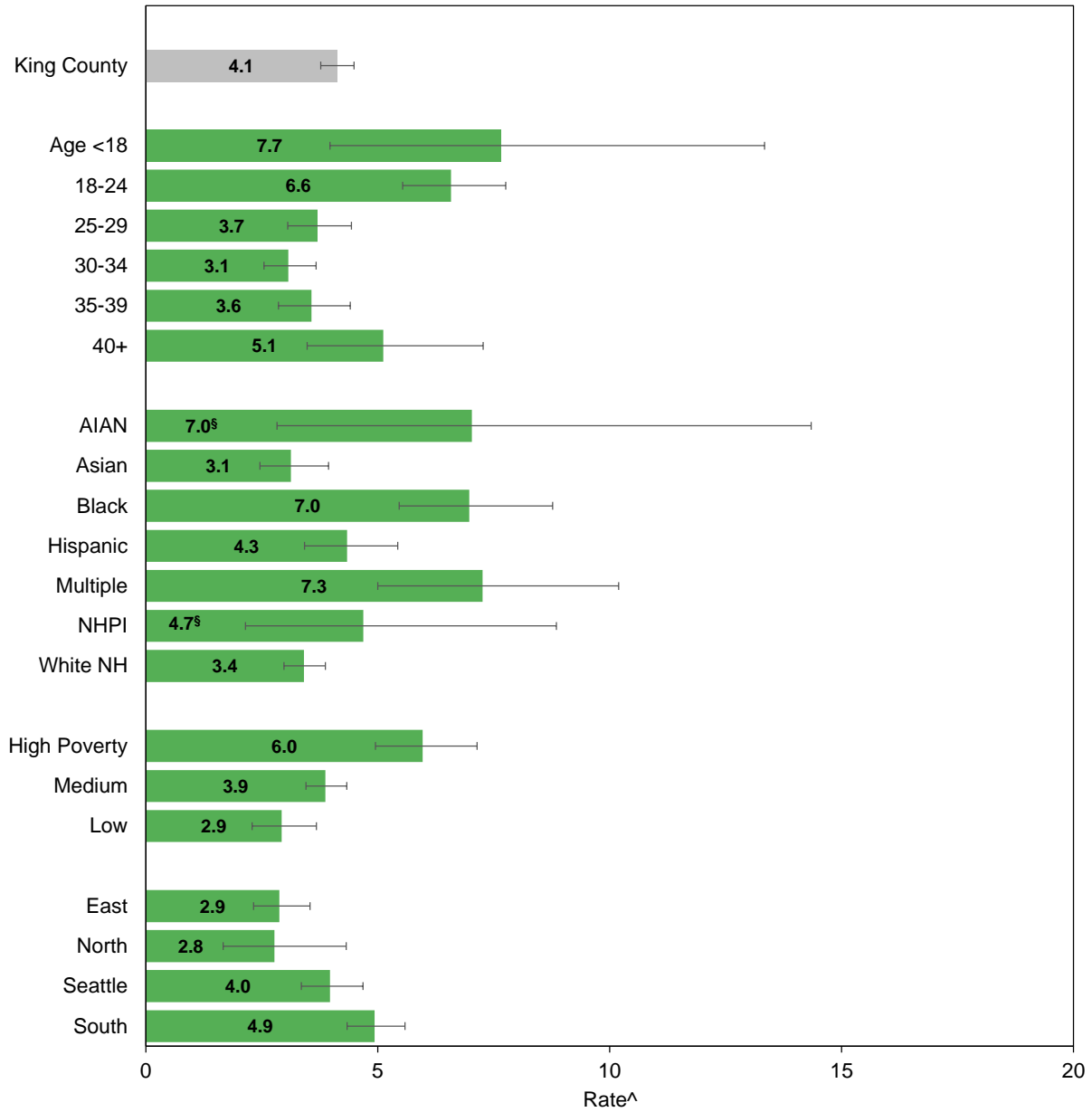
N/A: Not available

CI is 95% Confidence Interval

Rate = Deaths per 1,000 live births

Prepared By: Public Health - Seattle & King County;  
Assessment, Policy Development, & Evaluation, 1/2015

## Infant mortality, King County, 2008-2012 average



Source: Linked Birth-Death Certificate Data, Washington State Department of Health, Center for Health Statistics

Prepared by: Public Health Seattle & King County, Assessment, Policy Development, & Evaluation, 1/2015

<sup>^</sup>Rate = Deaths per 1,000 live births

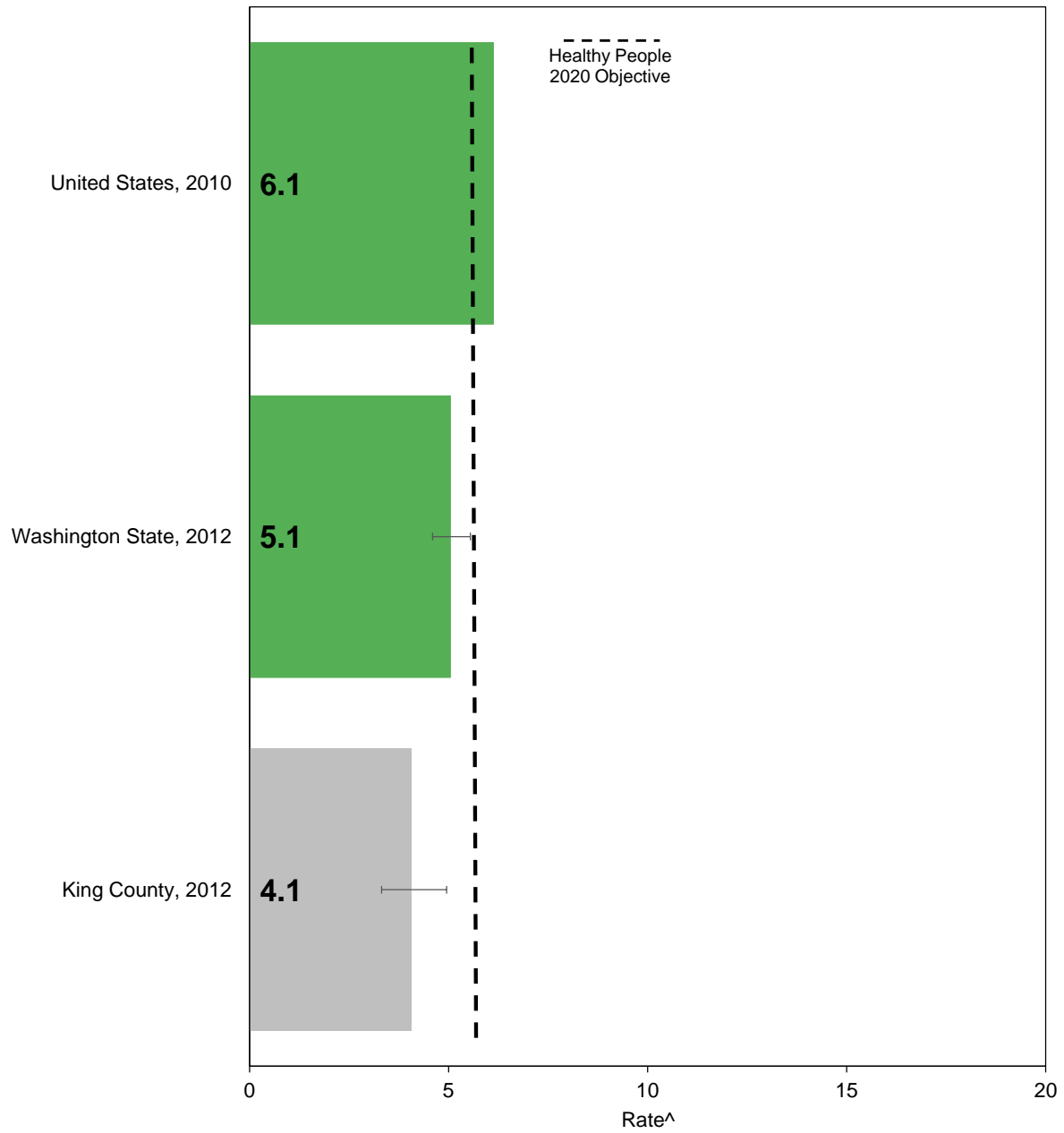
|-----|: Confidence interval shows range that includes true value 95% of the time

\* Too few cases to protect confidentiality and/or report reliable rates

§ Too few cases to meet precision standard, interpret with caution

NH = non-Hispanic

## Infant mortality by comparison areas



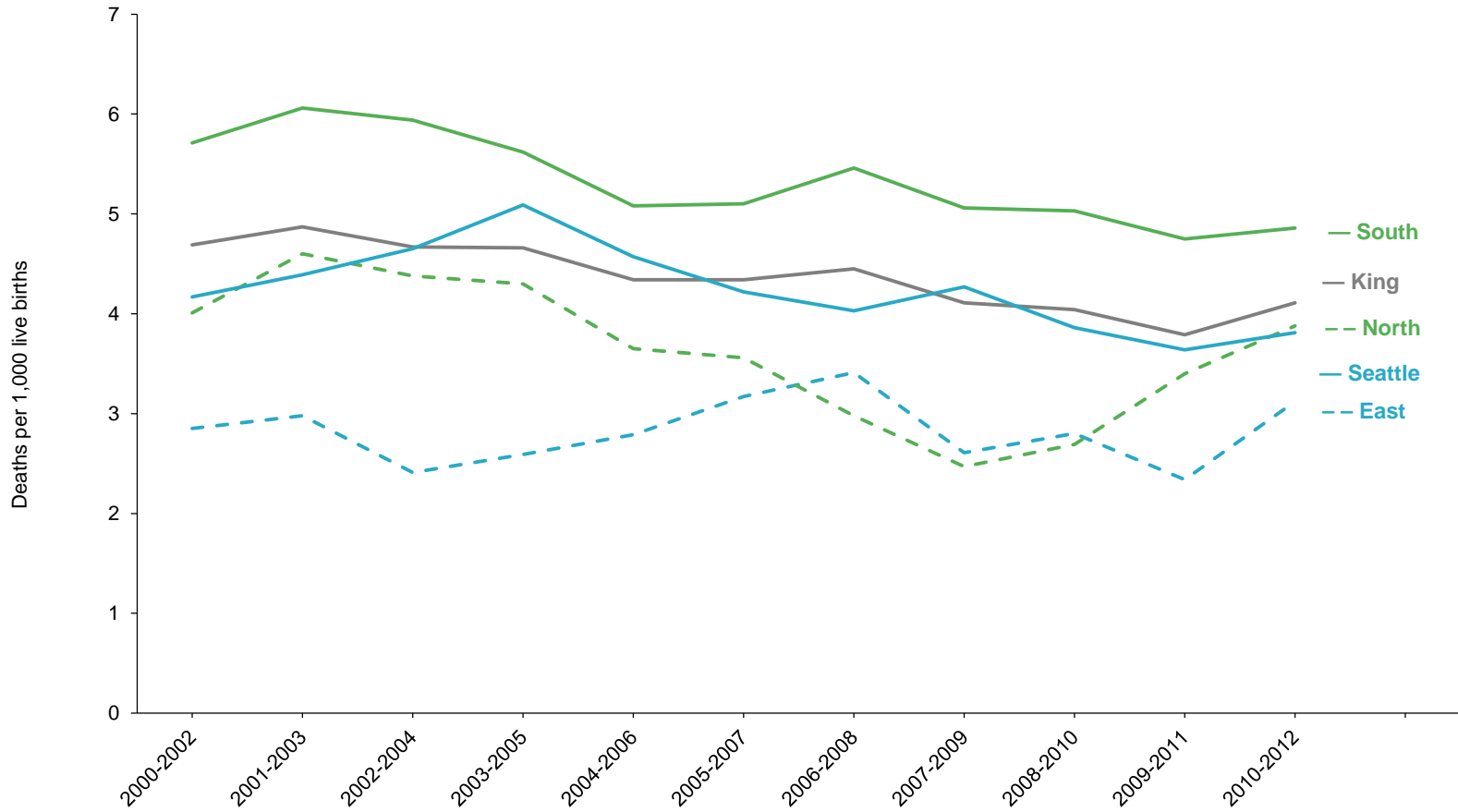
Source: Linked Birth-Death Certificate Data, Washington State Department of Health, Center for Health

Prepared by: Public Health Seattle & King County, Assessment, Policy Development, & Evaluation, 1/2015

<sup>^</sup>Rate = Deaths per 1,000 live births

|-----|: Confidence interval shows range that includes true value 95% of the time

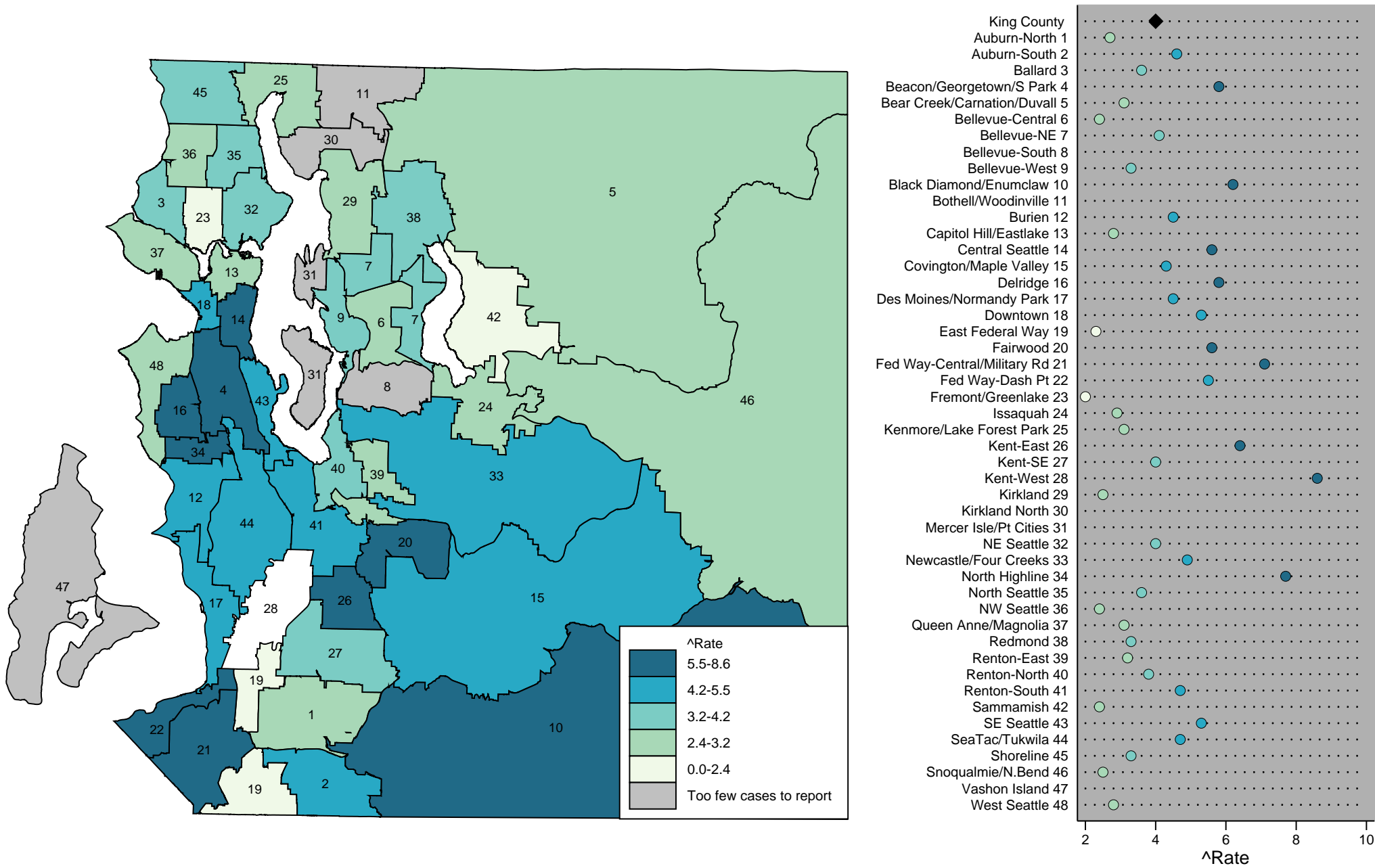
### Infant mortality, King County, 2000-2012, three-year rolling averages



Source: Linked Birth-Death Certificate Data, Washington State Department of Health, Center for Health Statistics

Prepared by: Public Health Seattle & King County, Assessment, Policy Development, & Evaluation, 1/2015

# Infant mortality by health reporting areas, King County, 2008-2012



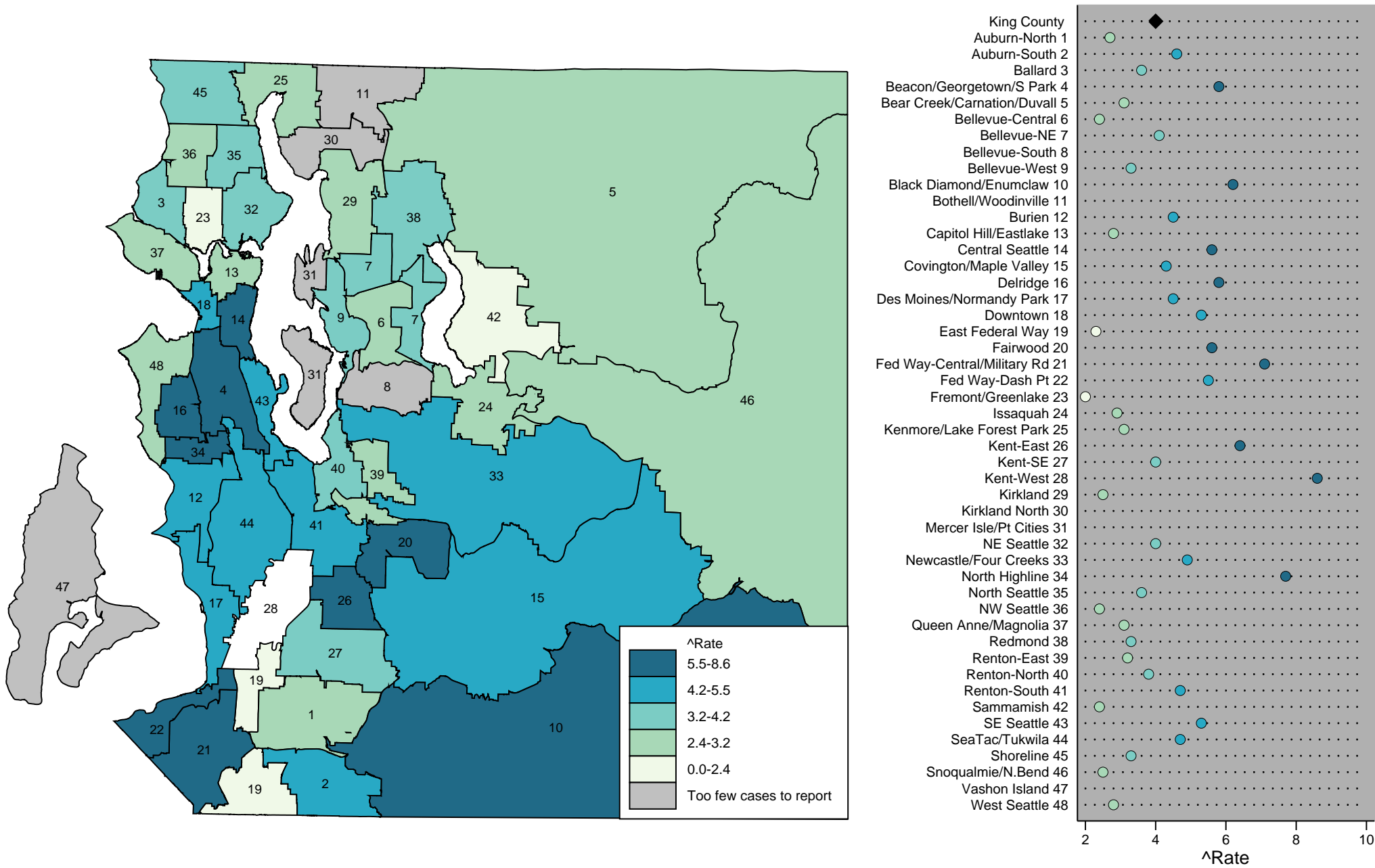
Note: HRA labels on the map match the chart on the right, listed in alphabetical order.

Source: Birth Certificate Data, Washington State Department of Health, Center for Health Statistics.

Prepared by Public Health - Seattle & King County, APDE on 11/4/14.

^Rate = deaths per 1,000 live births.

# Infant mortality by health reporting areas, King County, 2008-2012



Note: HRA labels on the map match the chart on the right, listed in alphabetical order.

Source: Birth Certificate Data, Washington State Department of Health, Center for Health Statistics.

Prepared by Public Health - Seattle & King County, APDE on 11/4/14.

^Rate = deaths per 1,000 live births.