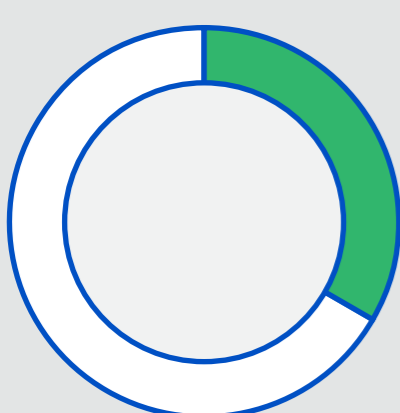


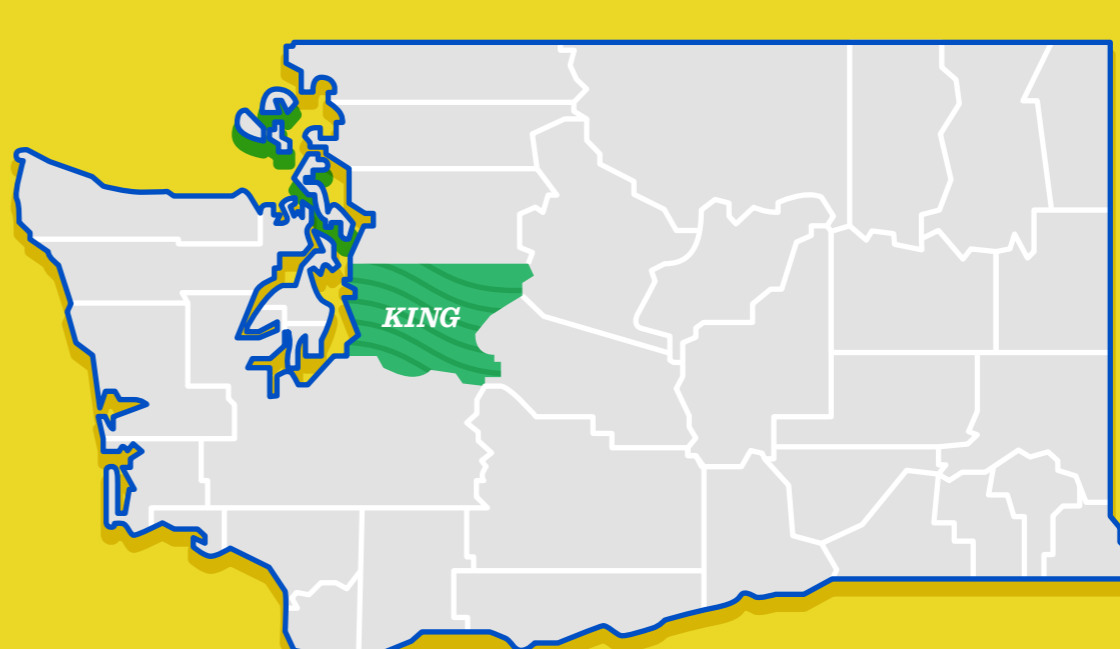
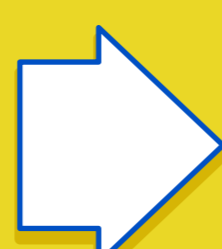
TUBERCULOSIS IN KING COUNTY

Globally, TB is the deadliest infectious disease —



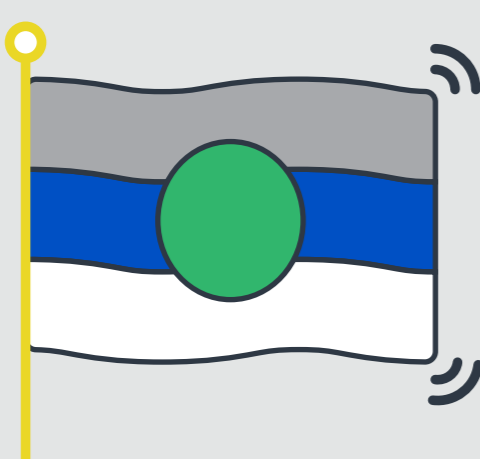
... AND 1/3 OF THE WORLD'S POPULATION IS INFECTED

• The majority live in developing countries

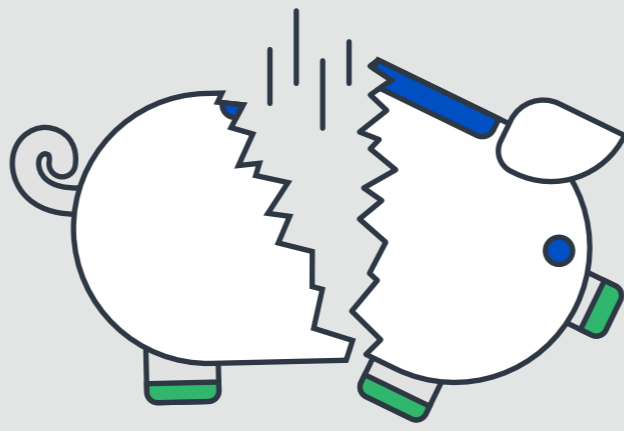


As the global burden increases, so does the local burden

TB affects the most vulnerable people:



Foreign born



Low-income



Immunosuppressed

THREE STAGES OF TB ARE:

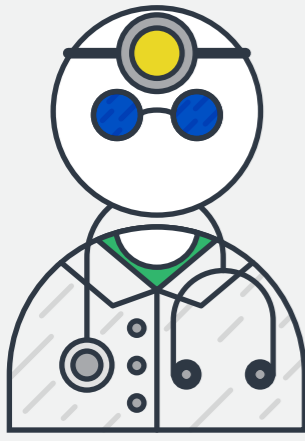


	Latent TB	Active TB	Multi Drug Resistant TB
Treatment time:	3-4 MONTHS	6-9 MONTHS	24 MONTHS
Treatment cost:	\$500	\$17,000	\$150,000
Treatment:	108-240 PILLS	850 PILLS	14,600 PILLS 240 INJECTIONS

FOR ACTIVE AND MULTI DRUG RESISTANT TB

The TB Control Program provides:

• DOT (Directly Observed Therapy)



Involves a public health worker observing the patient swallowing medication



DOT can occur multiple times per week, or even daily

• Supportive services (housing, food, social work, financial support, etc.)

PREVENTION EFFORTS



Public Health:

Latent TB

Evaluate contacts of infectious TB to break the chain of transmission; work with community providers and agencies to promote TB prevention

Active TB

Treat and cure infectious TB to prevent the spread of TB to others

Multi Drug Resistant TB

Treat and cure MDR TB to prevent the spread of TB to others



Community providers:

Latent TB

Screen high-risk community members for Latent TB; if appropriate, treat infection to prevent active TB

Active TB

Coordinate care with the TB program

