

Influenza Update: October 5, 2019

First report of the 2019-2020 season

During the week ending October 5, 2019:

- There was one new influenza-related death and two new outbreaks reported this week. One death and two outbreaks at long-term care facilities have been reported this season (since 9/29/2019).
- Based on data from King County laboratories, rhinovirus was the most commonly identified respiratory pathogen, followed by influenza. The percent of positive tests for respiratory viral pathogens was comparable to or below rates observed this time of year and below peak levels observed during the previous five seasons.
- The percent of visits to King County emergency departments (ED) for influenza-like illness (ILI) was comparable to the 5-year average for this time of year, and below peak levels observed during the previous 5 influenza seasons. The magnitude of ED ILI visits relative to the total number of ED visits was highest among the pediatric population.

At a glance

	<u>Week Ending</u> <u>10/05/2019</u>	<u>Since 09/29/2019</u>	<u>5-Year Average to Date</u>
Laboratory-confirmed influenza deaths	1	1	0
Respiratory disease outbreaks at long-term care facilities (LTCFs)	2	2	1
Percentage positive influenza tests by PCR ¹	2.3%	Season Peak	2.3%
Number of labs reporting	6	Weekly Average	7
Number of specimens tested	734	Weekly Average	704
Percentage of emergency department (ED) visits for ILI ²	0.94%	Season Peak	1.01%
		5-Year Average to Date	0.99%

¹Based on King County hospital laboratory and sentinel provider submissions to CDC's National Respiratory and Enteric Virus Surveillance System (NREVSS).

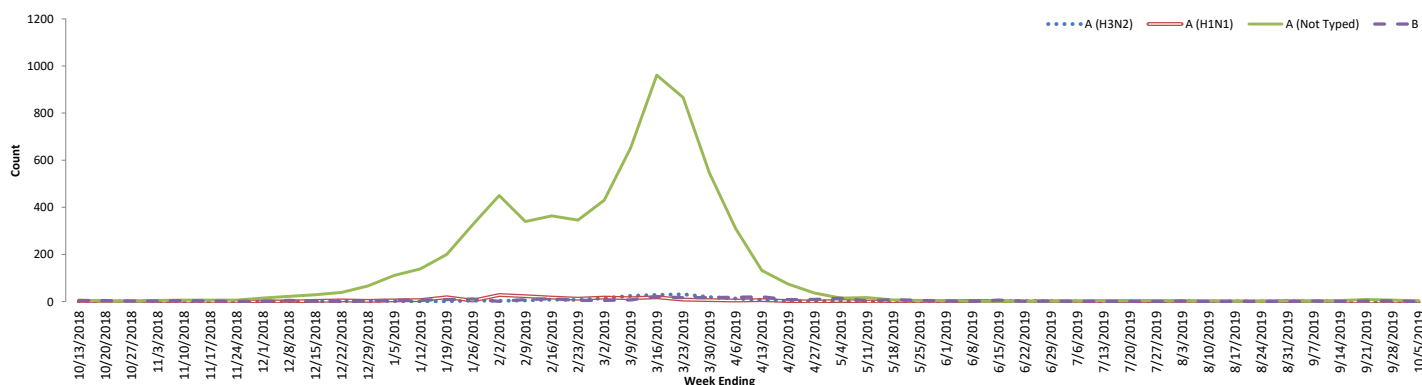
NREVSS data not available for all previous seasons due to change in reporting procedures. Changes in facilities reporting to NREVSS may impact counts.

²Based on Public Health - Seattle & King County's syndromic surveillance data representing aggregate percent of visits to King County EDs.**Submissions to NREVSS by King County labs, PCR testing only**

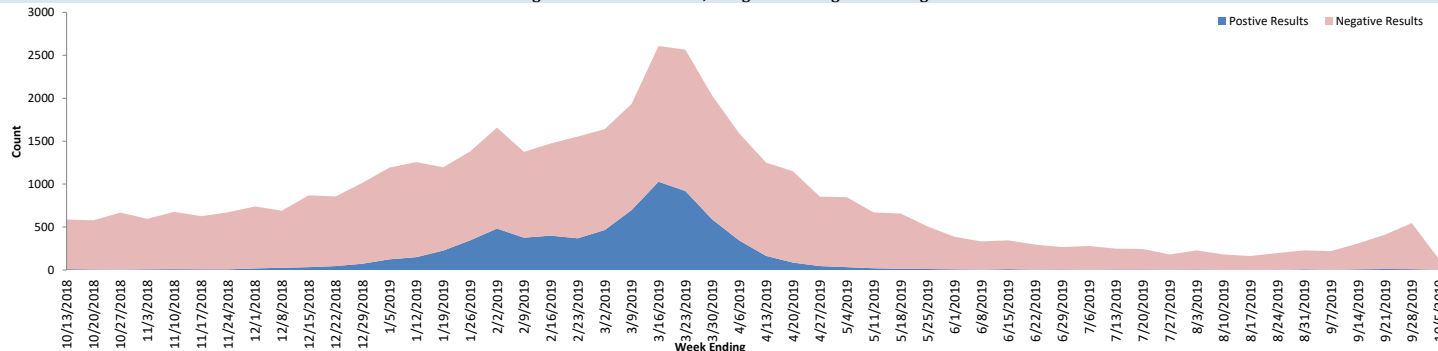
Week #	Week ending	# Labs reporting	A (H1N1)	A (H3N2)	A (Not typed)	B	# Tested	% Flu positive
37	9/14/2019	5	0	2	4	1	309	2.3%
38	9/21/2019	5	0	0	9	2	411	2.7%
39	9/28/2019	7	0	0	10	3	673	1.9%
40	10/5/2019	6	0	0	14	3	734	2.3%

Influenza results by subtype, PCR testing only (NREVSS)

Positive Influenza Results by Subtype, Using PCR Testing Methodologies



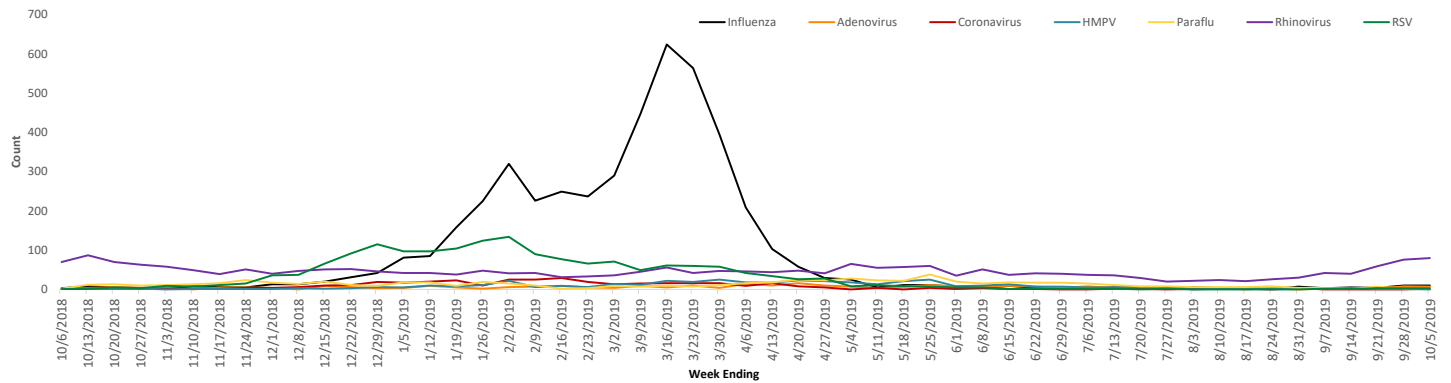
Positive and Negative Influenza Results, Using PCR Testing Methodologies



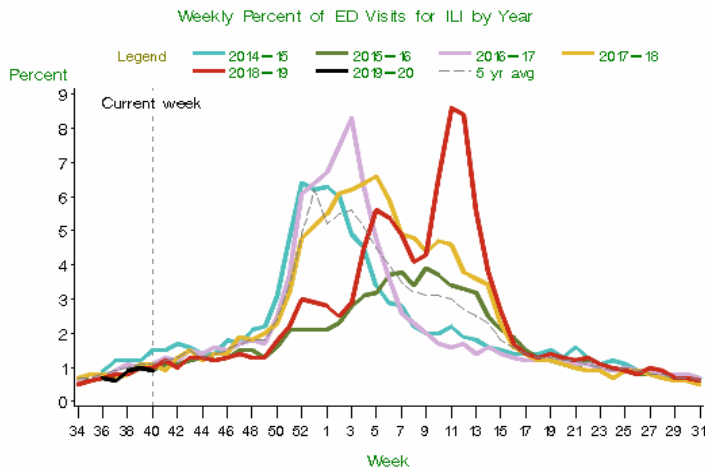
Public Health - Seattle & King County

Summary of Influenza Syndromic and Laboratory Surveillance

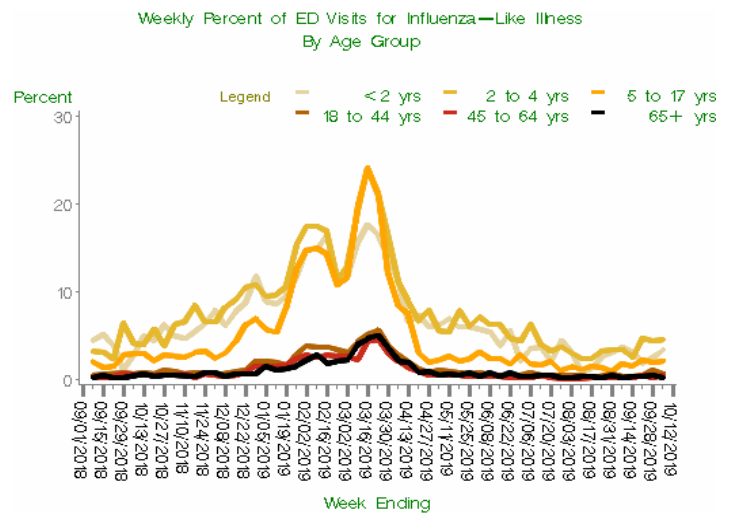
Influenza and other respiratory pathogens, PCR testing only (NREVSS)



King County syndromic surveillance



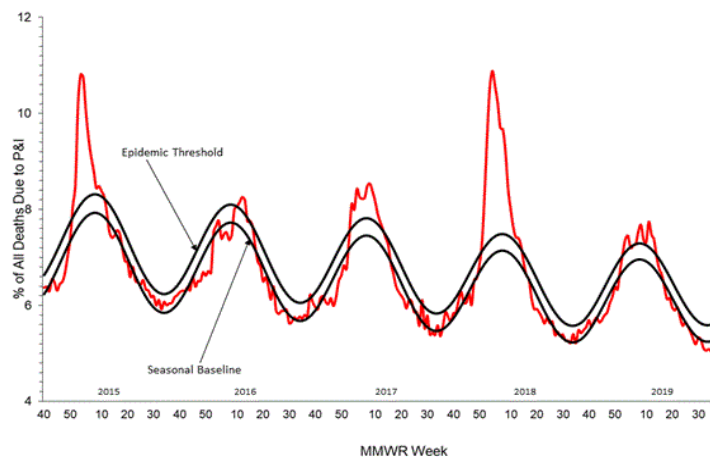
Note: The change from ICD-9 to ICD-10 codes in October 2015 may impact trends.
Last updated Oct 6, 2019 ; 'current week' is week ending Oct 5, 2019



ALLHOSPITALS, Last Updated Oct 8, 2019

National data from CDC

Pneumonia and Influenza Mortality from the National Center for Health Statistics Mortality Surveillance System
Data through the week ending September 21, 2019, as of October 3, 2019



Please report any of the following:

- Laboratory-Confirmed influenza-associated deaths
- Patients with novel or unsubtypable influenza viruses
- Outbreaks of influenza-like illness in a long-term care facility

Reporting Timeframe

Within 3 business days
Immediately
Immediately

Contact Information

Phone: (206) 296-4774
Fax: (206) 296-4803

Public Health
Seattle & King County



Additional Resources:

[Additional King County Flu Information, Resources, and Surveillance](#)
[UW Virology Laboratory Respiratory Virus Surveillance](#)
[Washington State Influenza Surveillance Update](#)

[National Influenza Update](#)
[Global Influenza Update](#)

Report updated on 10/9/2019

Public Health - Seattle & King County

Summary of Influenza Deaths and Long-Term Care Facility (LTCF) Influenza Outbreaks

Confirmed cases as of week 40 (ending 10/05/19)														
	2019-2020		2018-2019		2017-2018		2016-2017		2015-2016		2014-2015		5-year avg	
Influenza Deaths in Week 40	1		0		0		0		0		0		0.0	
Influenza deaths, season to date (since 9/29/2019)	1		0		0		0		0		0		0.0	
LTCF Outbreaks in Week 40	2		1		0		1		0		0		0.4	
LTCF Outbreaks, season to date (since 9/29/2019)	2		1		0		2		0		0		0.6	
	2019-2020		2018-2019		2017-2018		2016-2017		2015-2016		2014-2015		5-year avg	
Total Seasonal LTCF Outbreaks	2		43		68		92		18		65		57.2	
Flu type:														
A	1	50%	37	86%	15	22%	62	67%	7	39%	49	75%	34	59%
B	0	0%	0	0%	6	9%	3	3%	7	39%	4	6%	4	7%
A and B	0	0%	1	2%	5	7%	4	4%	0	0%	2	3%	2.4	4%
Info not available	1	50%	5	12%	42	62%	23	25%	4	22%	10	15%	16.8	29%
	2019-2020		2018-2019		2017-2018		2016-2017		2015-2016		2014-2015		5-year avg	
Total Seasonal Influenza Deaths	1		52		50		84		16		43		49	
Flu type:														
A	1	100%	48	92%	33	66%	75	89%	10	63%	40	93%	41.2	84%
H1/H1N1	0	0%	11	21%	1	2%	1	1%	6	38%	0	0%	3.8	8%
H3	0	0%	5	10%	6	12%	18	21%	1	6%	7	16%	7.4	15%
A (not typed)	1	100%	32	62%	26	52%	56	67%	3	19%	33	77%	30	61%
B	0	0%	2	4%	11	22%	7	8%	6	38%	3	7%	5.8	12%
Not typed	0	0%	2	4%	6	12%	1	1%	0	0%	0	0%	1.8	4%
Sex:														
Male	1	100%	27	52%	17	34%	41	49%	7	44%	17	40%	21.8	44%
Female	0	0%	25	48%	33	66%	43	51%	9	56%	26	60%	27.2	56%
Age:														
Under 5 years	0	0%	0	0%	0	0%	0	0%	0	0%	0	0%	0	0%
5 - 17	0	0%	0	0%	0	0%	0	0%	0	0%	0	0%	0	0%
18 - 44	0	0%	1	2%	0	0%	1	1%	3	19%	1	2%	1.2	2%
45 - 64	0	0%	13	25%	7	14%	5	6%	5	31%	6	14%	7.2	15%
65+ years	1	100%	38	73%	43	86%	78	93%	8	50%	36	84%	40.6	83%
Average	85		73.6		81.1		81.9		64.9		81.7		76.6	
Race:														
White	1	100%	35	67%	33	66%	54	64%	12	75%	35	81%	33.8	69%
Asian	0	0%	5	10%	2	4%	13	15%	2	13%	1	2%	4.6	9%
Black	0	0%	1	2%	3	6%	4	5%	2	13%	5	12%	3	6%
Amer Indian	0	0%	1	2%	0	0%	0	0%	0	0%	0	0%	0.2	0%
Hispanic/Latino	0	0%	2	4%	2	4%	3	4%	0	0%	1	2%	1.6	3%
Other	0	0%	0	0%	1	2%	1	1%	0	0%	1	2%	0.6	1%
Unknown	0	0%	8	15%	9	18%	9	11%	0	0%	0	0%	5.2	11%
Flu vaccine status														
Up to date	0	0%	16	31%	26	52%	39	46%	6	38%	21	49%	21.6	44%
Not up to date	1	100%	19	37%	10	20%	20	24%	8	50%	5	12%	12.4	25%
Unknown	0	0%	17	33%	14	28%	25	30%	2	13%	17	40%	15	31%