



Rainier Beach: A Beautiful Safe Place for Youth
March 22, 2018
King County Regional Law Safety and Justice Committee

Rainier Beach: A Beautiful Safe Place for Youth (ABSPY)



Goal: Reduce crime that affects youth at five “hotspots” in Rainier Beach

How: Community-developed, evidence-informed, non-arrest interventions

Partners: Rainier Beach Action Coalition, George Mason University-Center for Evidence-Based Crime Policy, City of Seattle Human Services, Seattle Youth Violence Prevention Initiative, Seattle Police, Parks & Recreation, the Boys & Girls Club of King County, Southeast Effective Development, Rainier Beach Merchants Association, the Ethiopian Community in Seattle and many more...

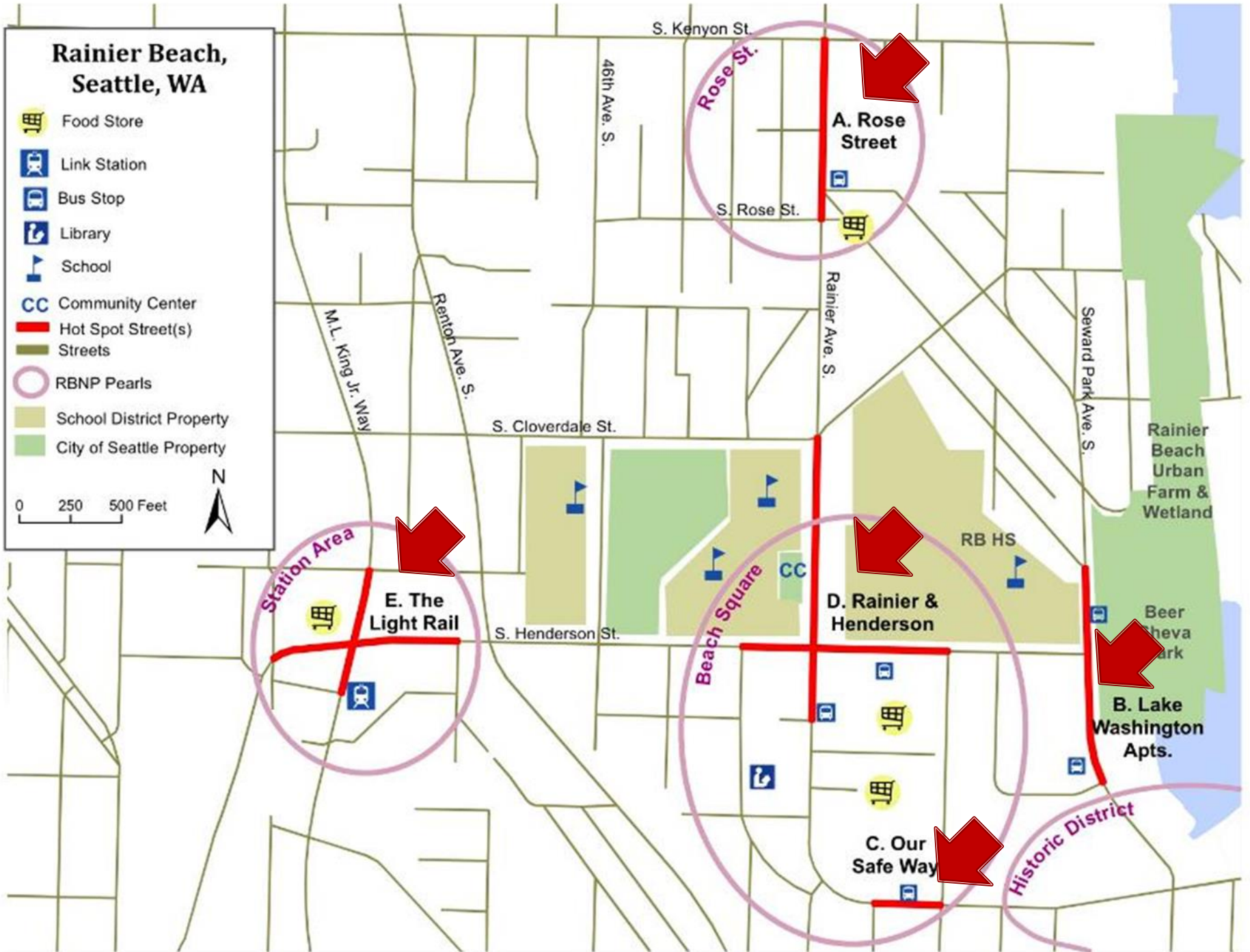
Coordination: Seattle Neighborhood Group

Funding: Federal (BCJI) 2012-15, Local (Seattle Human Services Dept.) 2016-18

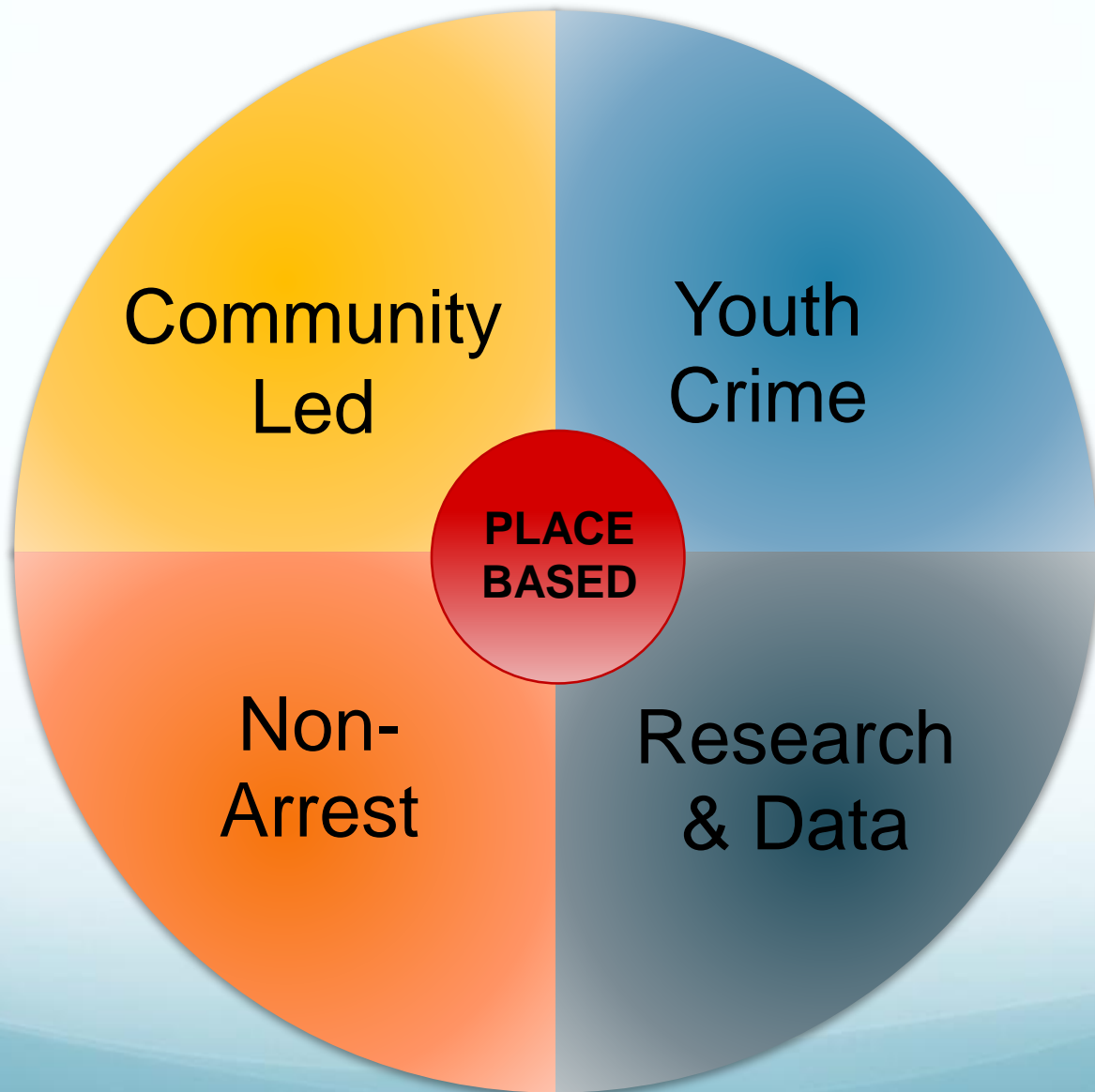
Rainier Beach, Seattle, WA

-  Food Store
-  Link Station
-  Bus Stop
-  Library
-  School
-  Community Center
-  Hot Spot Street(s)
-  Streets
-  RBNP Pearls
-  School District Property
-  City of Seattle Property

0 250 500 Feet



Research Basis for Project



Place-based Crime Prevention Needs...

- Intimate knowledge of **place**
- Genuine **community** ownership





Our Community Task Force

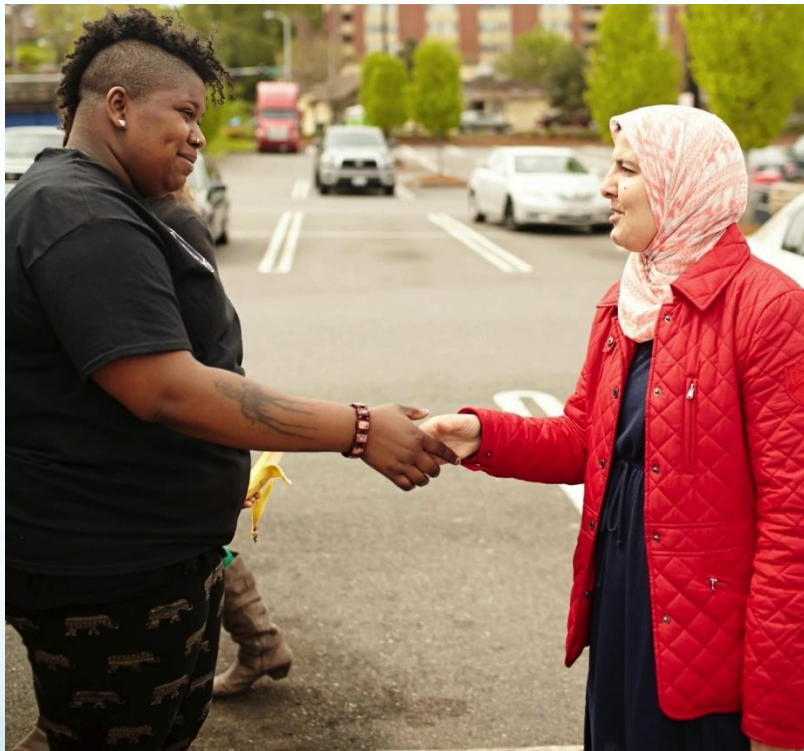
Their role:

- Attend community-based problem solving training
- Analyze data
- Prioritize crimes
- Identify place-based risk factors
- Identify evidence-informed interventions



Team building at CTF Workshop#3

Quality Of Engagement: Community Involvement in Data Gathering



Breaking the Pane

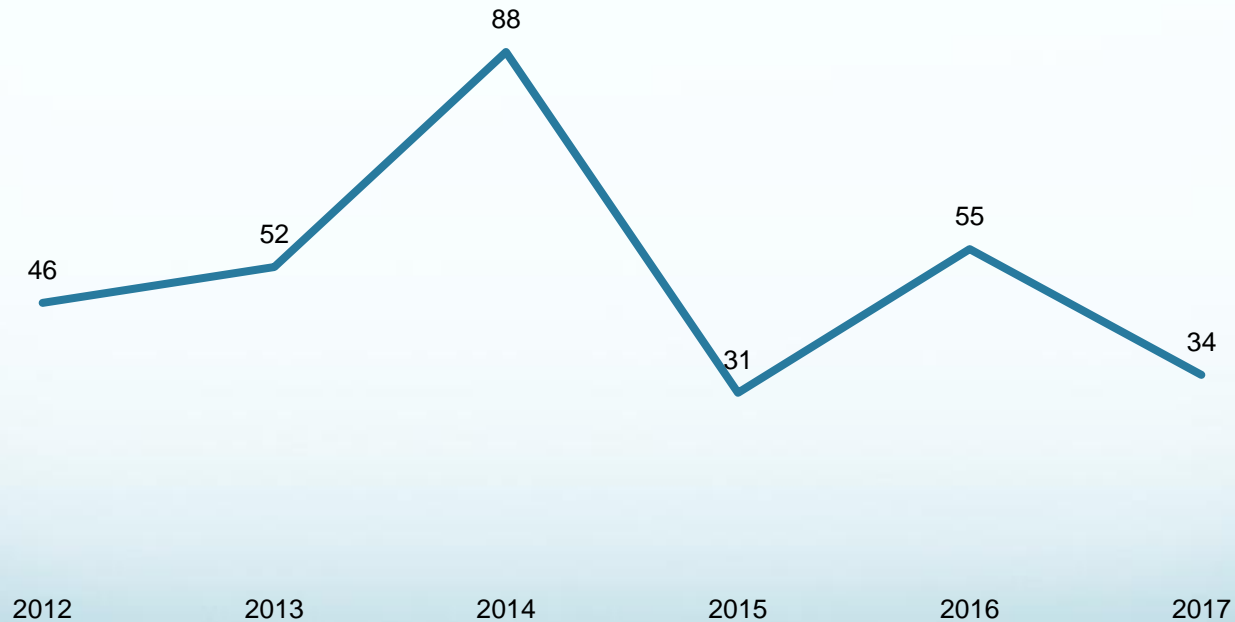


Community Appearance Surveys

Data-Driven

Are our interventions working?

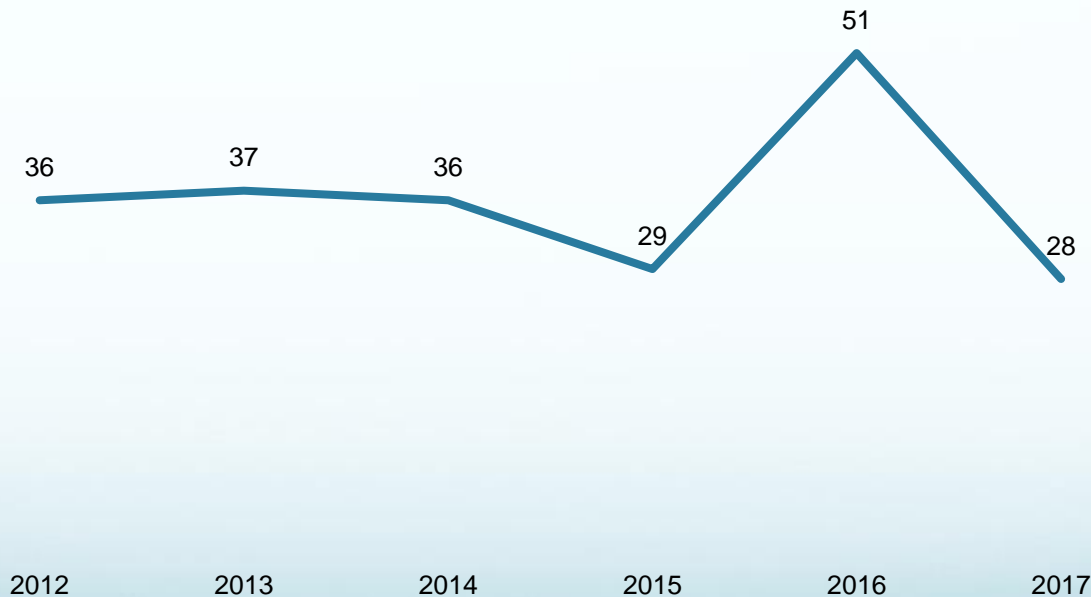
**Rainier & Henderson Incidents
Youth Age 25 & Under**



Data-Driven

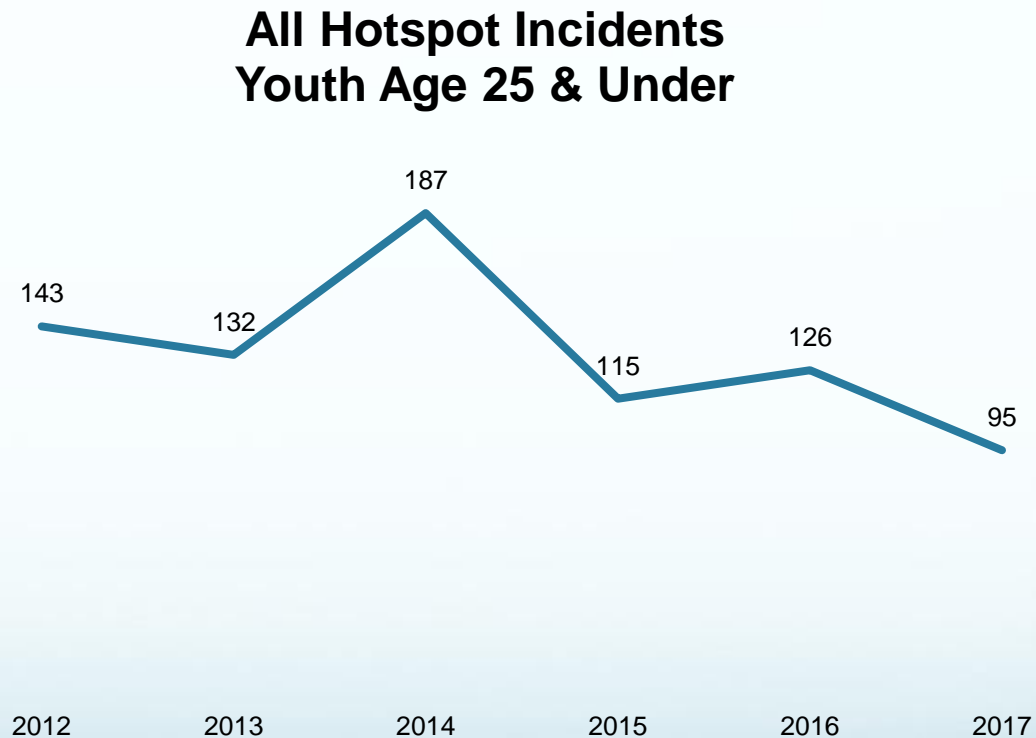
What changes do we need to make to achieve the results that we want?

**Lake Washington Incidents
Youth Age 25 & Under**



Using Data

Overall, what do we see?



Evidence-informed interventions

Intervention	Description
Corner Greeters	Youth-created pop-up community-engagement activities
Business Outreach	Crime Prevention education and activities
CPTED	Physical improvements on public and private property
Campus Safety Team + PBIS	Agencies, schools, businesses promoting positive behavior
Safe Passage	After-school place-guardians

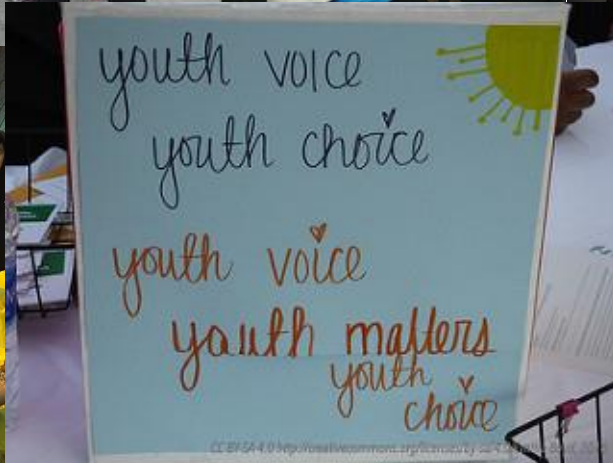
Corner Greeters: Rainier Beach Action Coalition

Youth-led Events



Corner Greeters: Rainier Beach Action Coalition

WE ARE HERE!



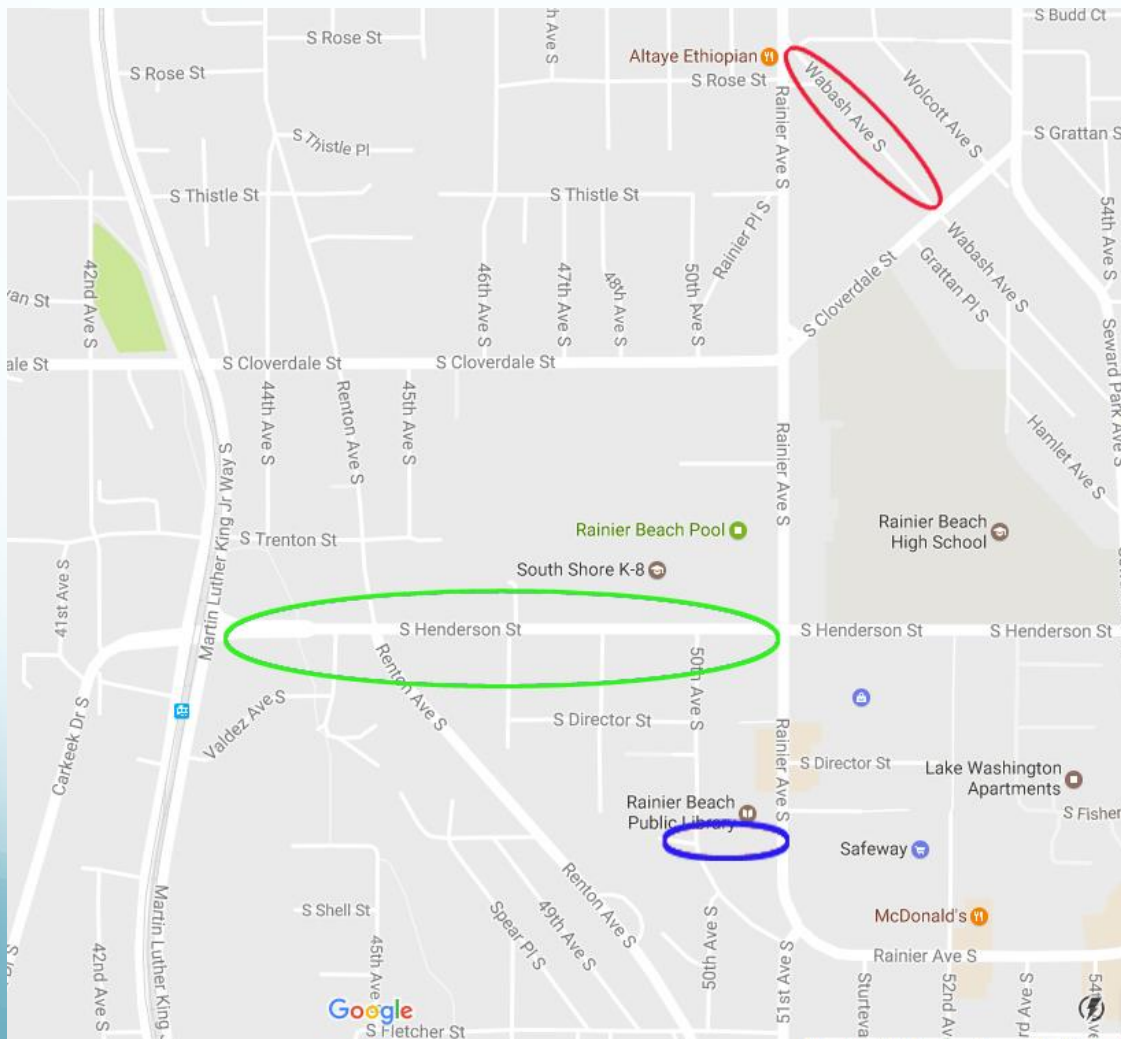
Business Crime Prevention: SNG, SPD, RBMA

Graffiti Survival Kits



CPTED Public Places: City of Seattle

**Total City of Seattle Investments (2016-2017):
\$1,604,660**



**Wabash Ave. S.
Street Improvements**

2017: \$200,000

**S. Henderson
Street Improvements**

2017: \$1,293,060

**RB Library
Pathway and Lighting**

2016: \$21,600

2017: \$90,000

CPTED Public Places: Community Work Parties

Community Work Parties with The Mission Continues &



Mapes Creek Walkway & Fisher Pl. Trail

CPTED Storefront Project: Southeast Effective Development

Sunset Café

8115 Rainier Ave S.

- Electrical Upgrade & Exterior Lighting
- Façade Repairs & Paint
- Replace broken windows
- Security Film (remove window bars)
- Deck and Planters
- New Signage (Installed Jan 2017)

Investment: \$15,384

Match: \$4,588



SAFE PASSAGE TEAM



Seven Community Safety Specialists; aka “Blue Coats”

Hired and trained in youth engagement and de-escalation

Ensuring youth safe passage home after school

Safe Passage: Boys & Girls Clubs of King County

Talk-about-it-
Tuesdays”



SMART Moves



‘Our Voice Matters’ My Vote Matters Campaign

Community Service:
Turkey Bowl



Field Trip:
Trampoline Nation



Seattle Police Department + ABSPY

YOUTH PROGRAMMING @
LAKE WASHINGTON
APARTMENTS

COPS & CONES

THURSDAY
MARCH 29
4-6PM

Enjoy free ice
cream and meet
local officers at
this family event
for all ages!

LAKE WASHINGTON APTS

This project is supported by Award No. 2016-QK-BX-0005, from the National Institute of Justice, Office of Justice Programs, U.S. Department of Justice. The opinions, findings, and conclusions or recommendations expressed in this publication/program/exhibition are those of the author(s) and do not necessarily reflect those of the Department of Justice.



ANNUAL COMMUNITY ENGAGEMENT BASKETBALL TOURNAMENT





rb-safeplaceforyouth.com