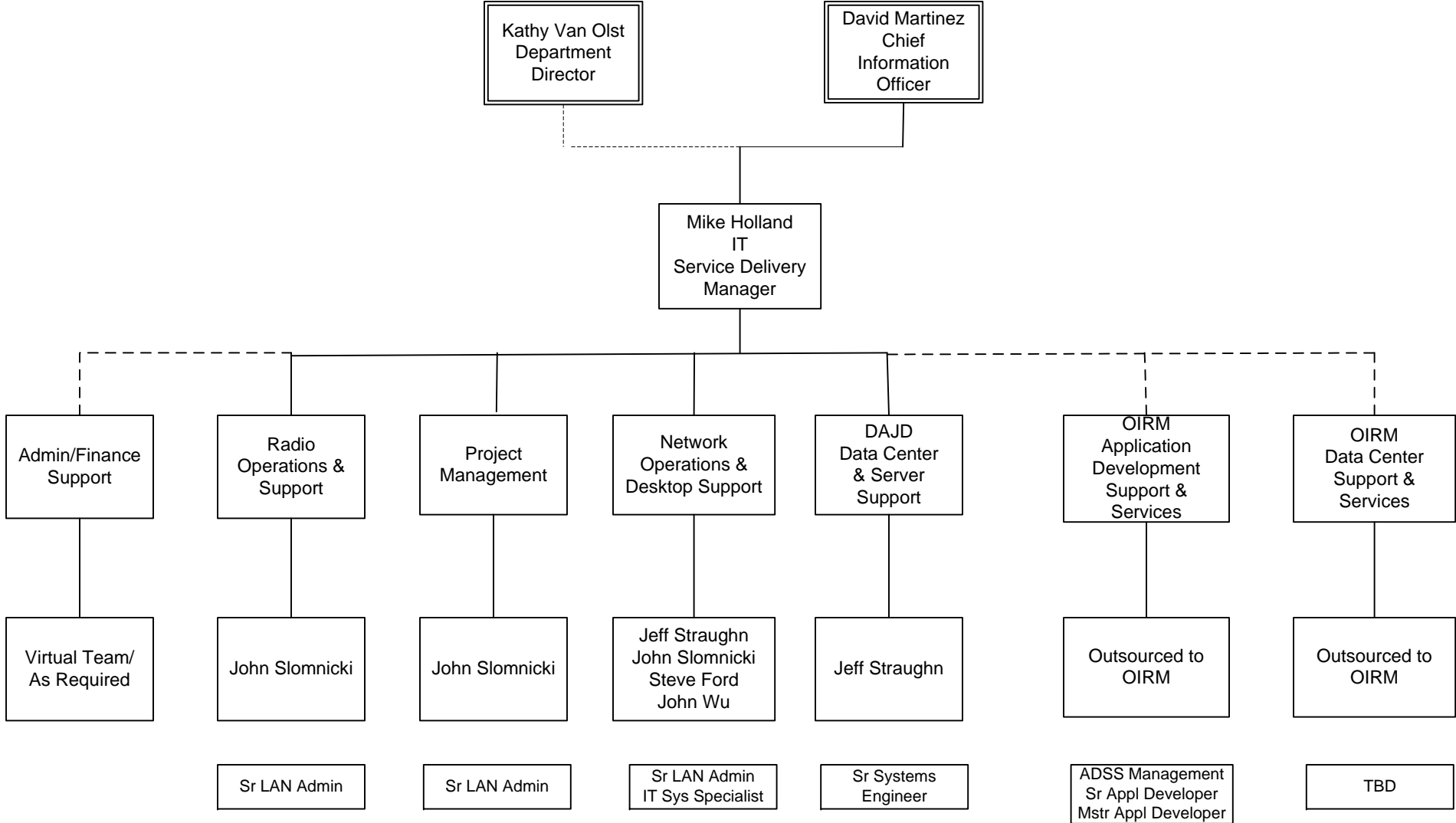
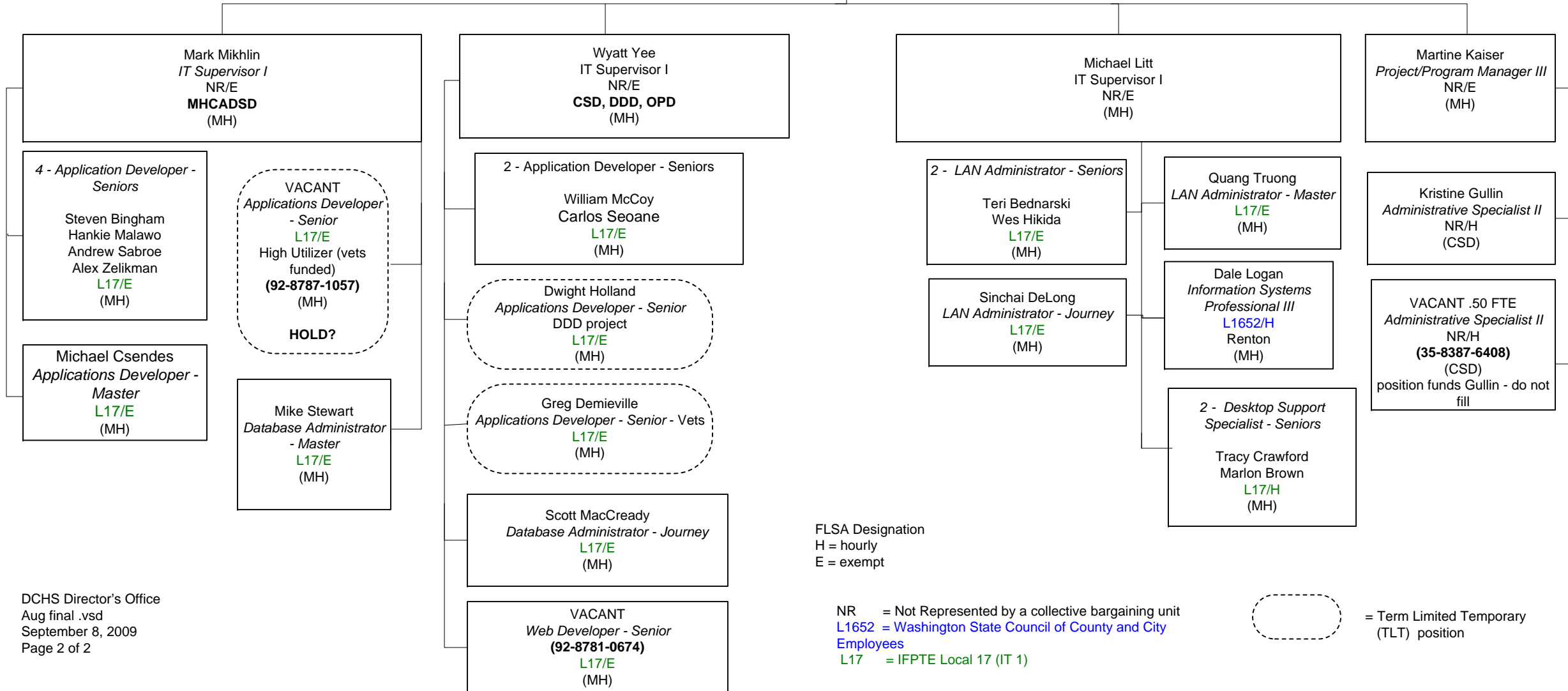


Department of Adult and Juvenile Detention  
Current IT Organization  
March 2010




# Department of Community and Human Services

Diep Nguyen  
*IT Service Delivery Manager II*  
 Information Technology  
 NR/E

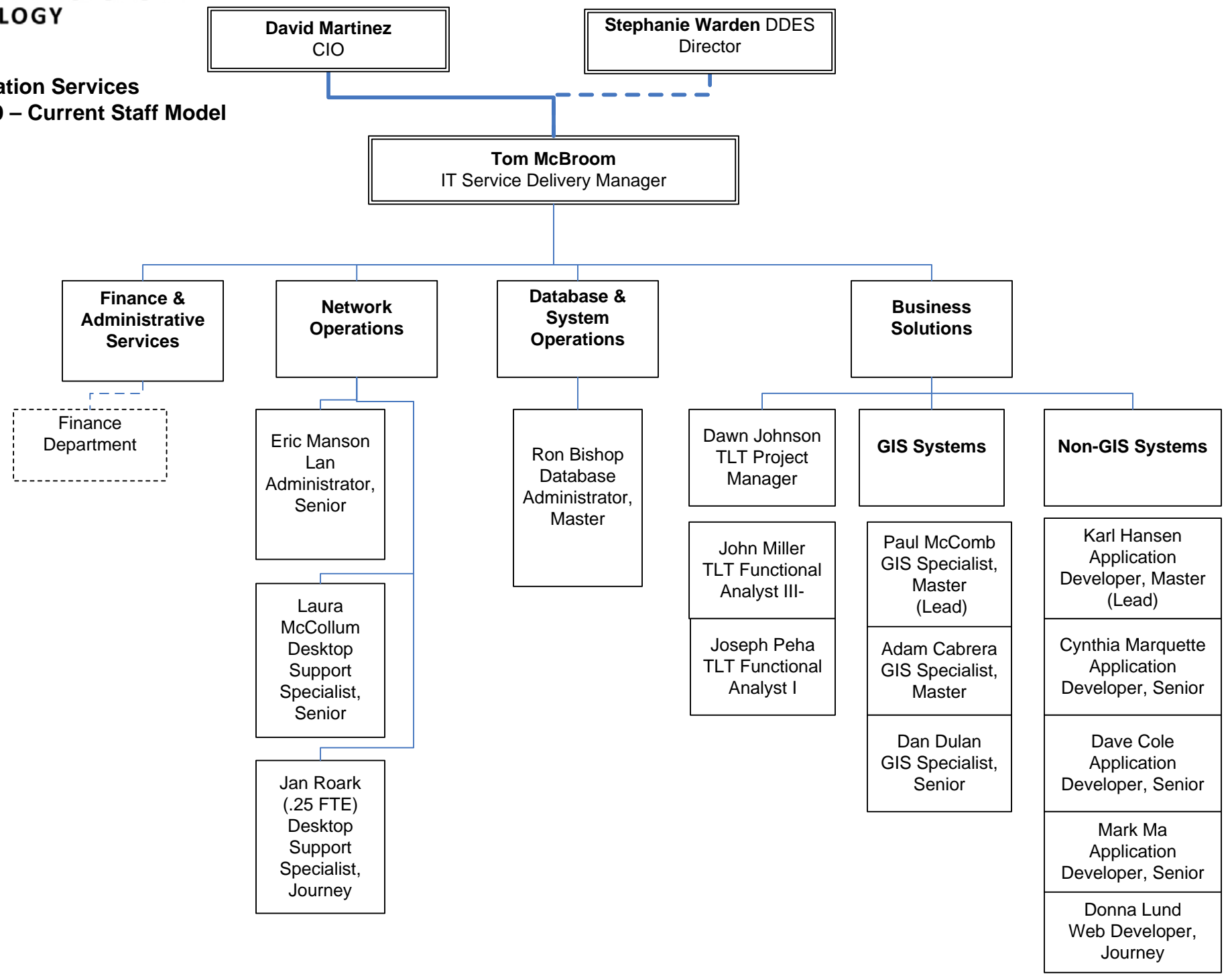


FLSA Designation  
 H = hourly  
 E = exempt

NR = Not Represented by a collective bargaining unit  
 L1652 = Washington State Council of County and City Employees  
 L17 = IFPTE Local 17 (IT 1)

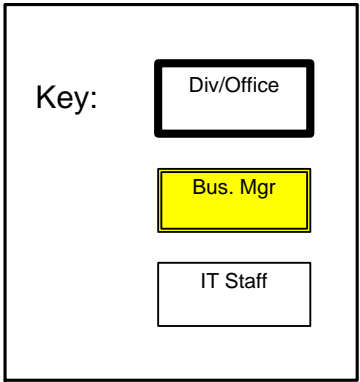
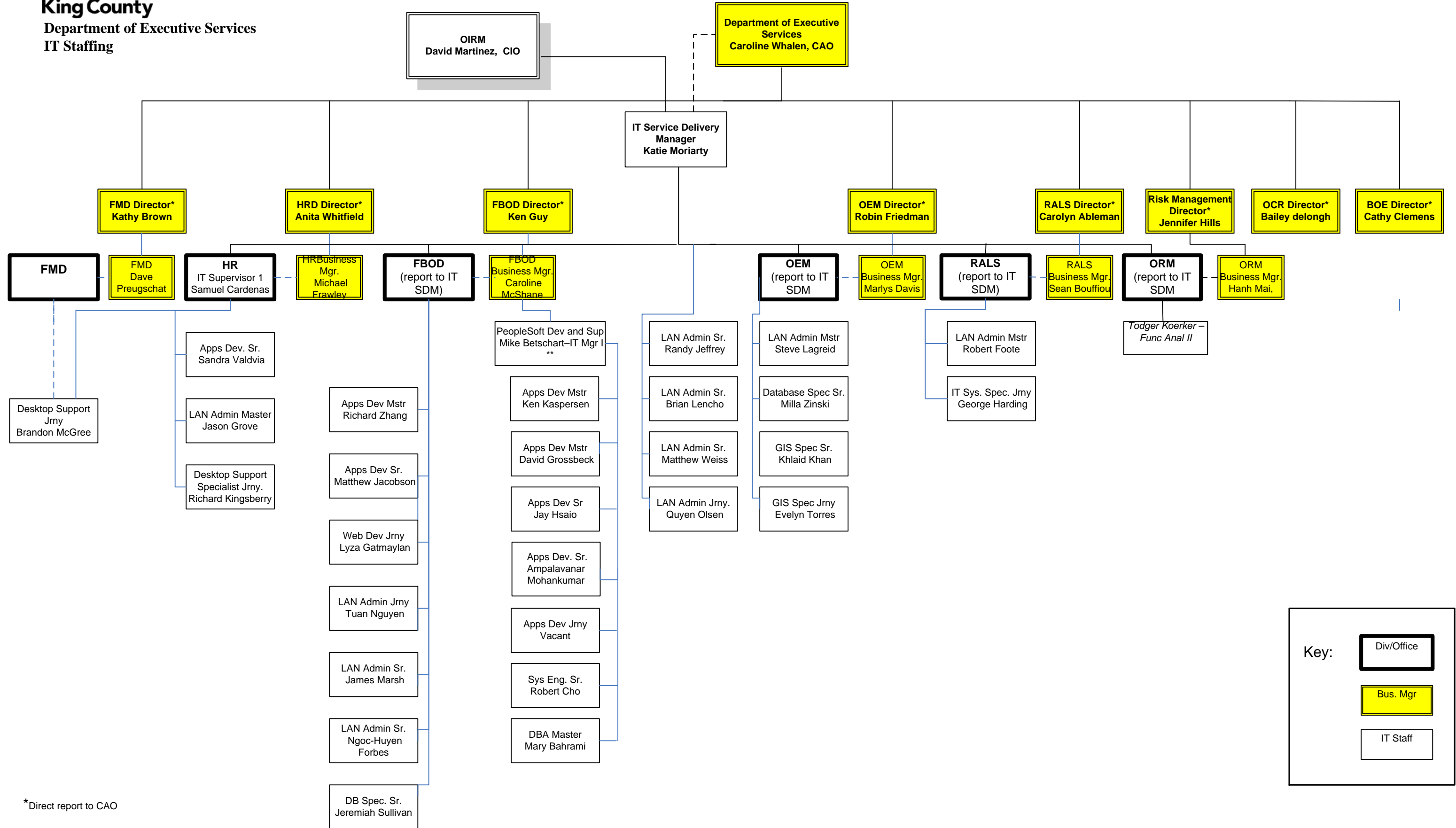
 = Term Limited Temporary (TLT) position

**DDES Information Services**  
 October, 2009 – Current Staff Model



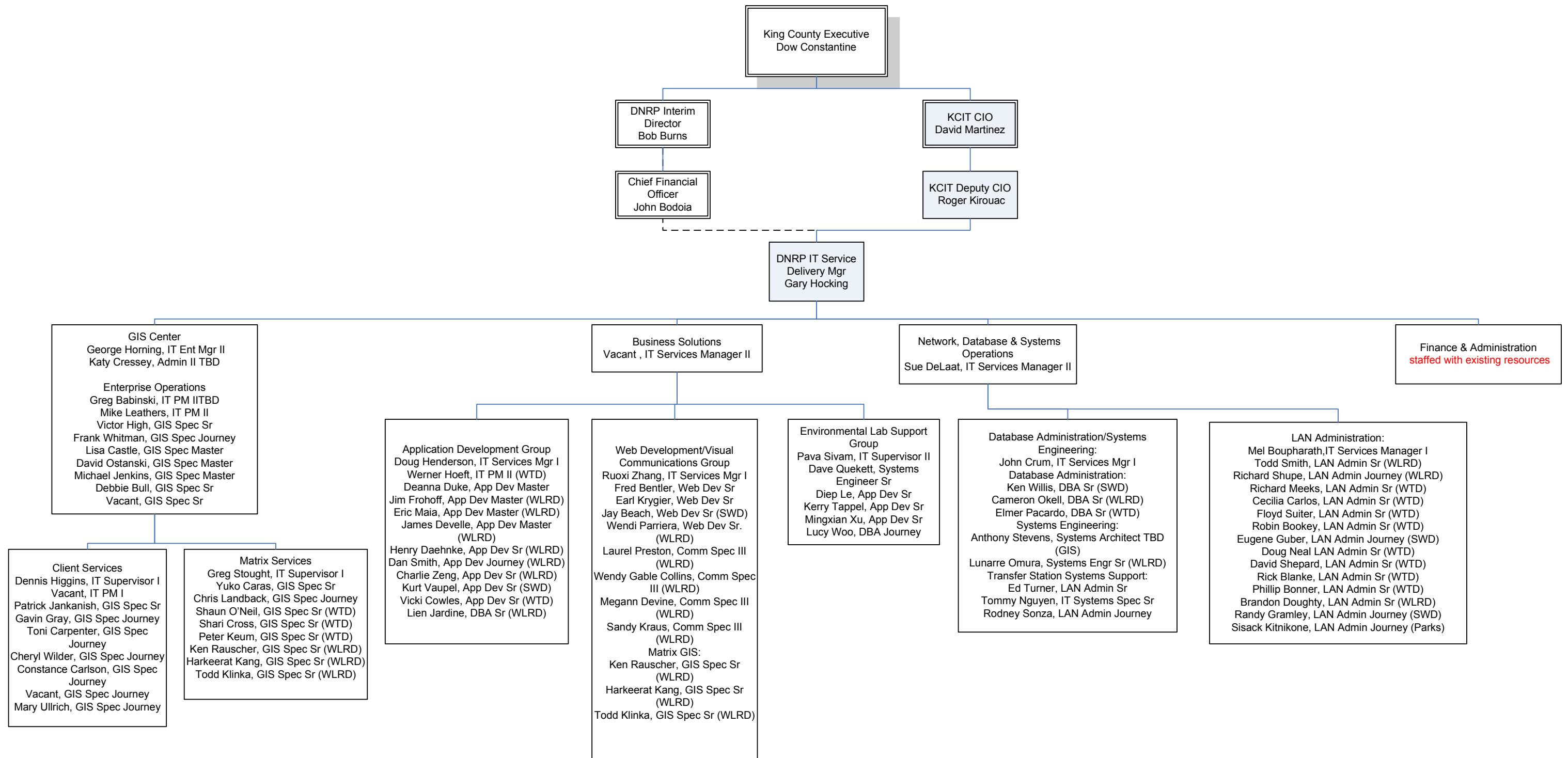


# DES Interim Structure – IT Reorganization – March 2010



\*Direct report to CAO

DNRP IT Reorganization Updated – Jan 2010



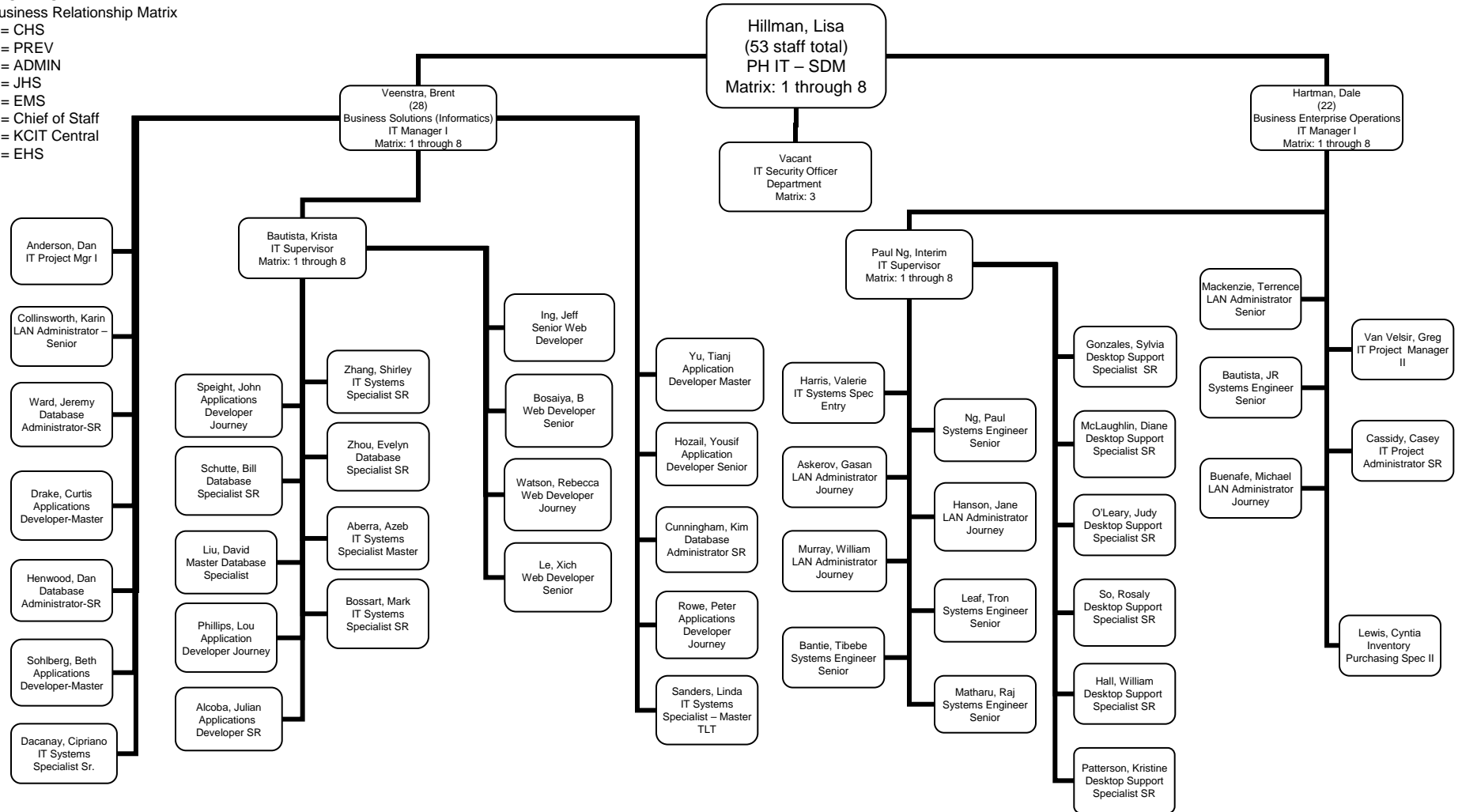
# 2010 PH IT Organization

Org Chart is FTE Neutral  
 IT Investment Board Reviews key changes to ensure PH  
 Business needs are addressed.

**LEGENDS**

Business Relationship Matrix

- 1 = CHS
- 2 = PREV
- 3 = ADMIN
- 4 = JHS
- 5 = EMS
- 6 = Chief of Staff
- 7 = KCIT Central
- 8 = EHS



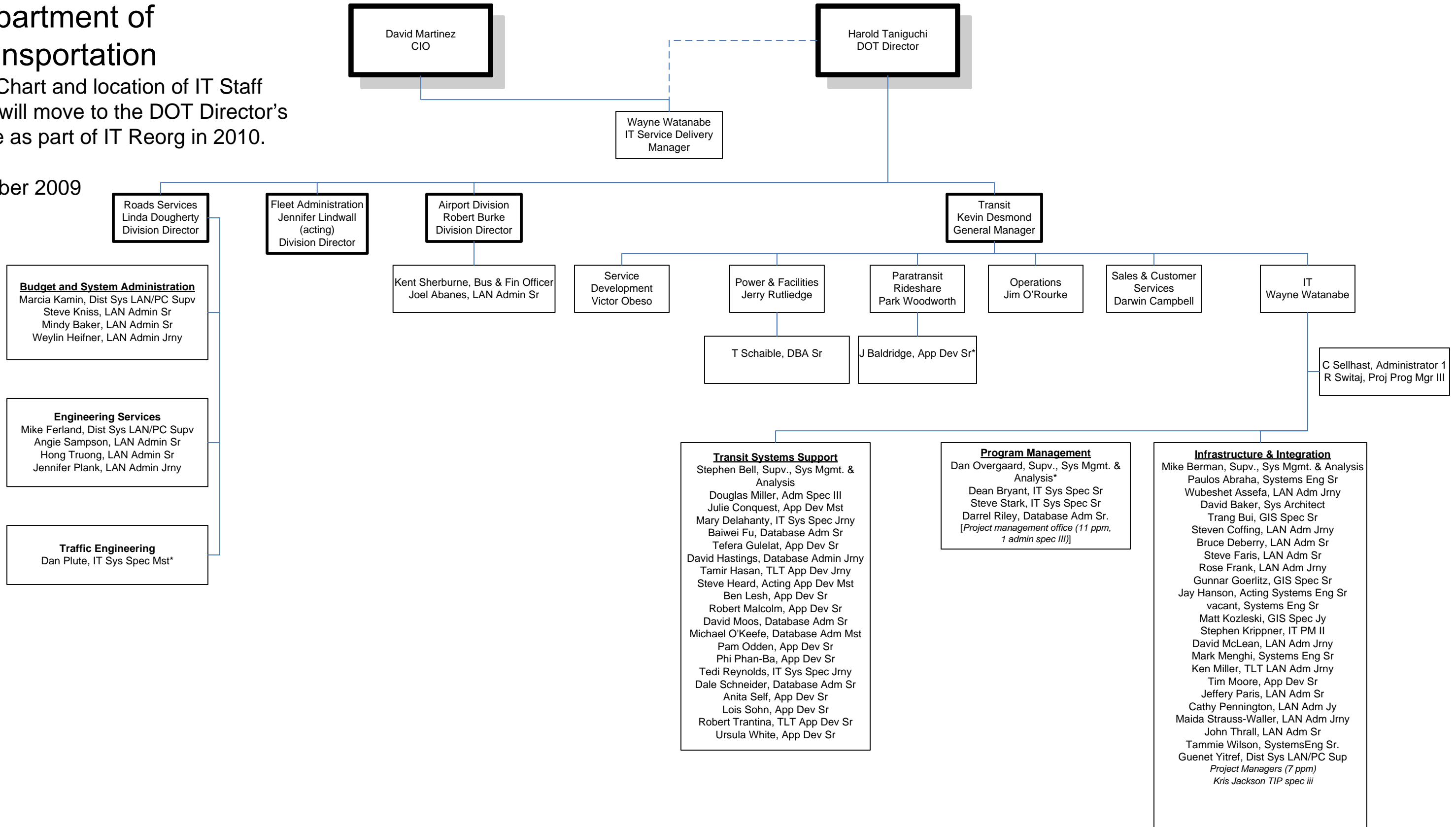


King County

# Department of Transportation

Org Chart and location of IT Staff who will move to the DOT Director's office as part of IT Reorg in 2010.

October 2009



\* = blended  
\*\* = to be reclassified



**Confidential Secretary**  
Maureen Weisser

