

Contacting District 7

Metropolitan King County Council
King County Courthouse, Room 1200
516 Third Avenue
Seattle, WA 98104

Tel: 206-296-1007
Fax: 206-205-0778
TTY: 206-296-1024
E-mail: pete.vonreichbauer@metrokc.gov
Web: www.metrokc.gov/vonreichbauer

Citizen's pocket guide to King County Council District 7



Pete von Reichbauer, Councilmember

This handy pocket guide contains the information most frequently requested by local constituents, as well as contact numbers for our most highly utilized county agencies.

As always, please do not hesitate to contact my office with any questions or concerns.

A stylized, handwritten signature in black ink, consisting of a large 'P' followed by a smaller 'v' and 'R'.

Pete von Reichbauer

Helpful contact information

King County www.metrokc.gov
King County Executive 206-296-4040
Elections information 206-296-VOTE
4H Youth & Family 206-205-3100
King County Parks 206-296-4232
King County Public Health 206-296-4600
Puget Sound Fresh 206-296-7824
District Court information 206-205-9200
Superior Court information 206-296-9300
Traffic cams www.metrokc.gov/kcdot/mycommute/index.cfm

Please look inside for information that constituents have requested most frequently.

Frequently requested information

Illegal Dumping/Junker Vehicle

Hotline: 206-296-SITE

Your complaint will be recorded and directed to the appropriate agency for follow-up.

Road Services: 206-296-8100 (24 hours)

Potholes, flooding, road project information, malfunctioning traffic lights on county roads

Assessor: 206-296-7300,
www.metrokc.gov/assessor

Property tax assessment appeals,

Board of Equalization: 206-296-3496

Senior/Disabled exemptions: 206-296-3920

Billing questions, copy of bill: 206-296-3850

Parcel viewer/iMap:

www.metrokc.gov/gis/mapportal/index.htm

Detailed information about your property

Sheriff: 206-296-4155

www.metrokc.gov/sheriff

Sex offender searches, accident reports, clearance letters, pistol licenses, crime prevention resources

Metro Transit: <http://transit.metrokc.gov>

Bus Schedules: 206-553-3000

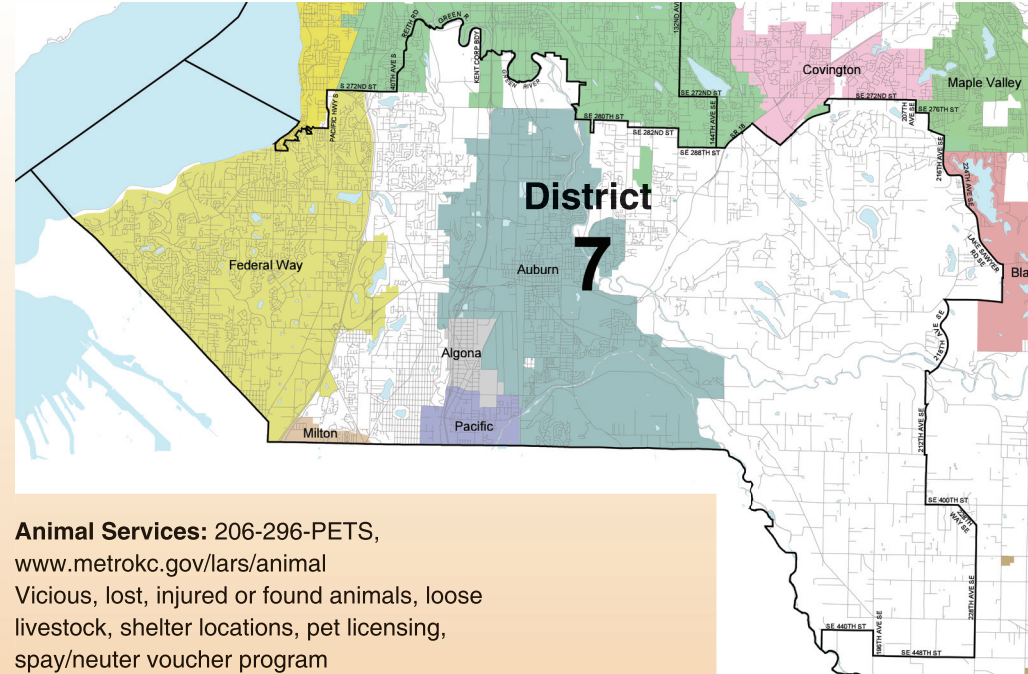
ACCESS: 206-263-3113

Metro Transit Customer Service, Reduced Fares & Senior Discounts: 206-553-3060

Department of Development and

Environmental Services: 206-296-6600,
www.metrokc.gov/ddes

Zoning, subdividing and boundary lines, online permits, building/land use codes, Fire Marshall/burn ban information, business licenses, and CAO



Animal Services: 206-296-PETS,

www.metrokc.gov/lars/animal

Vicious, lost, injured or found animals, loose livestock, shelter locations, pet licensing, spay/neuter voucher program