



Cascadia Subduction Zone Exercise June 7-9, 2016



April 2016



Large Scale Regional Tabletop Exercise Simulating a Magnitude 9 Earthquake June 7-9, 2016

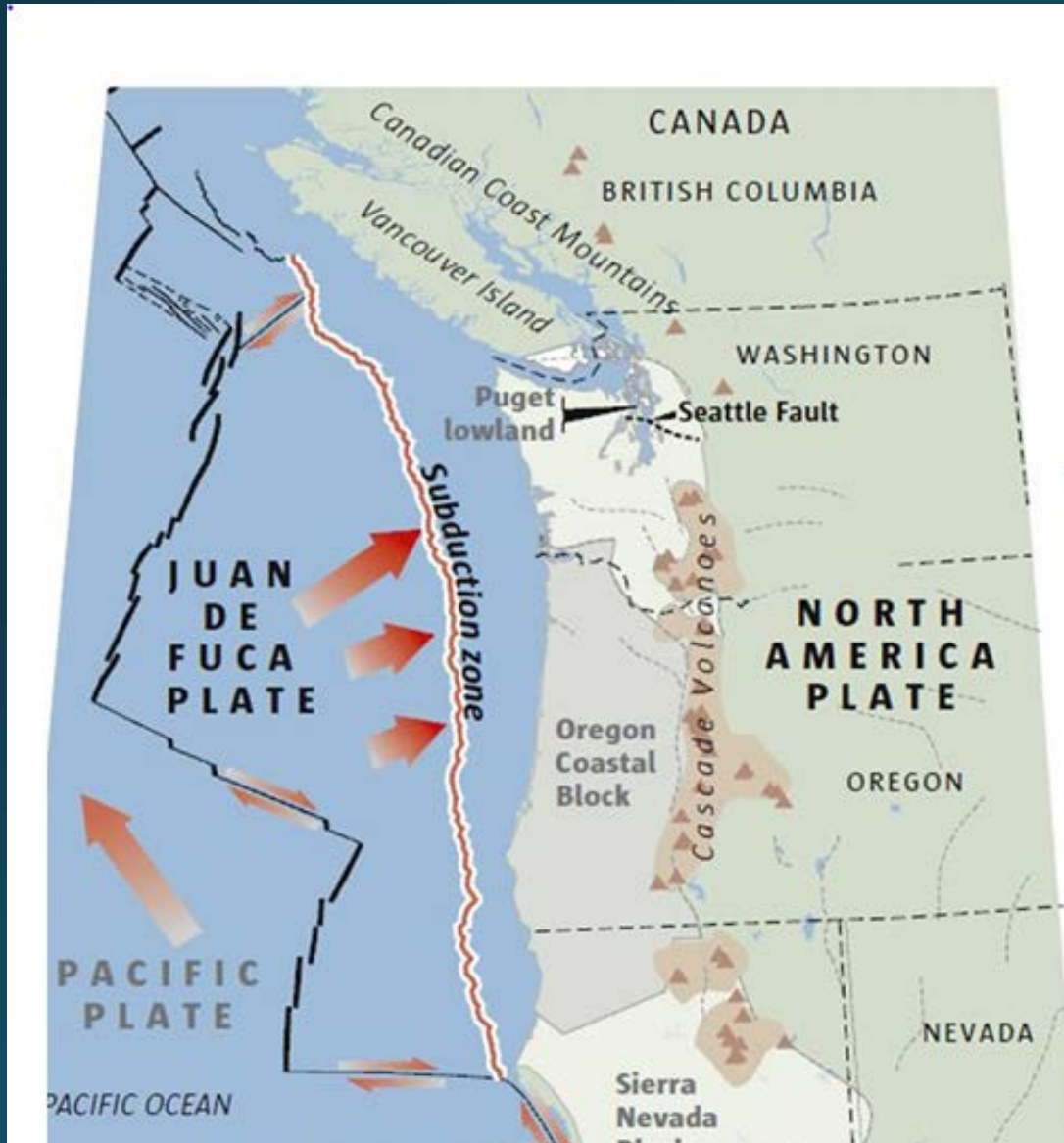
Participants:

- Washington
- Oregon
- British Columbia
- Alaska



FEMA

Cascadia Rising Exercise



- Organized by FEMA
- Will test the region's ability to respond to a CSZ quake
- In King County > 30 agencies are participating so far
- To participate contact your jurisdiction's Office of Emergency Management

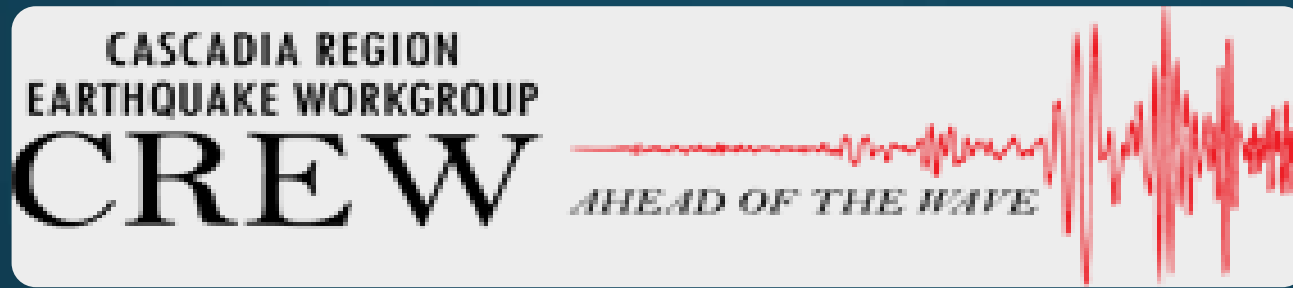


FEMA

In addition to subduction zone quake our region is at risk from:

- Deep Quakes – like the Nisqually Quake
- Crustal Quakes – shallow quakes



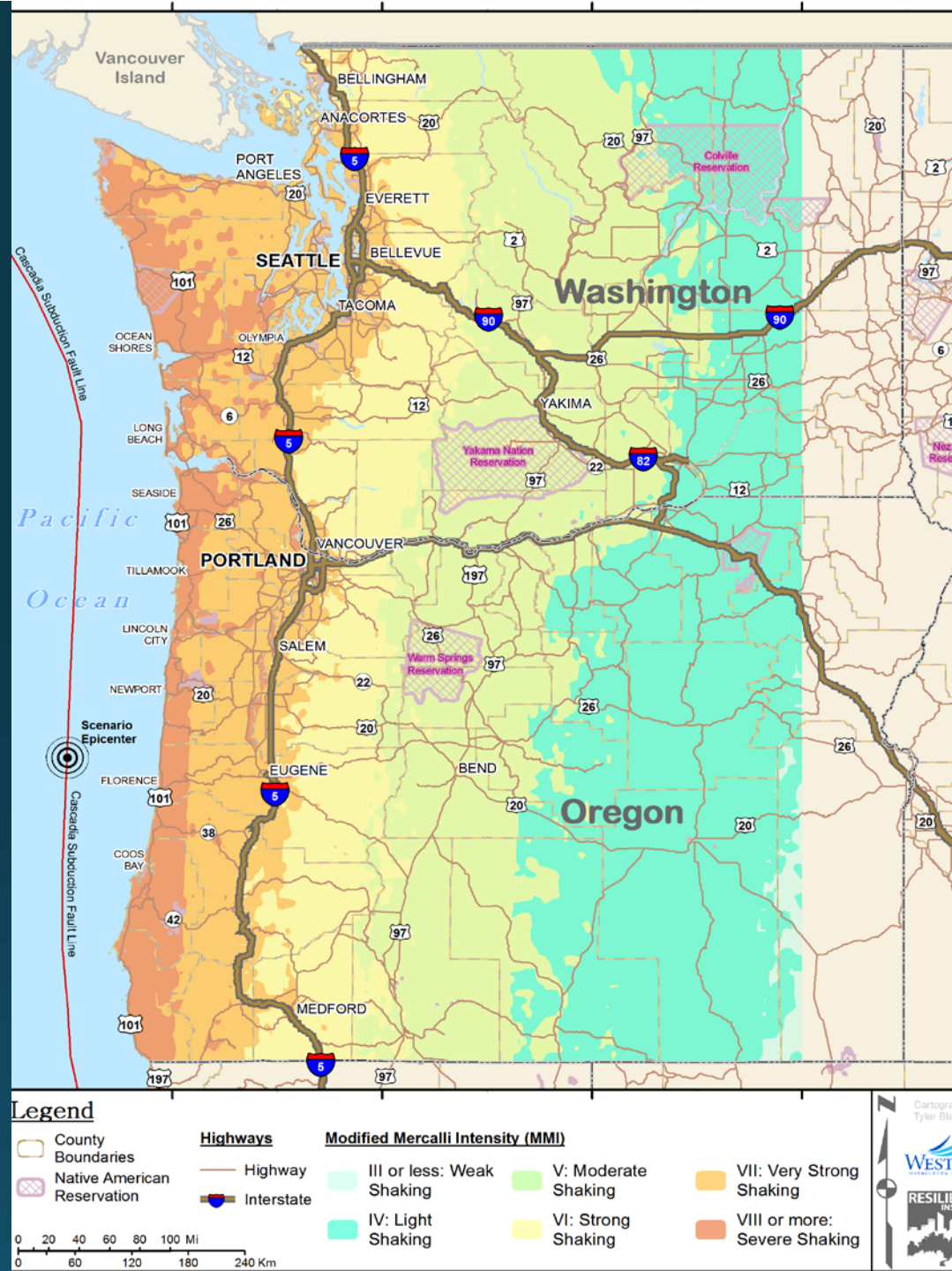


Crew is a multi-state, multi-discipline group dedicated to earthquake research and response planning. This video gives an overview of the earthquake hazards of the Pacific Northwest

Earthquakes of the Pacific NW

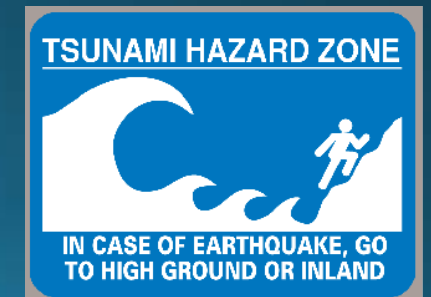
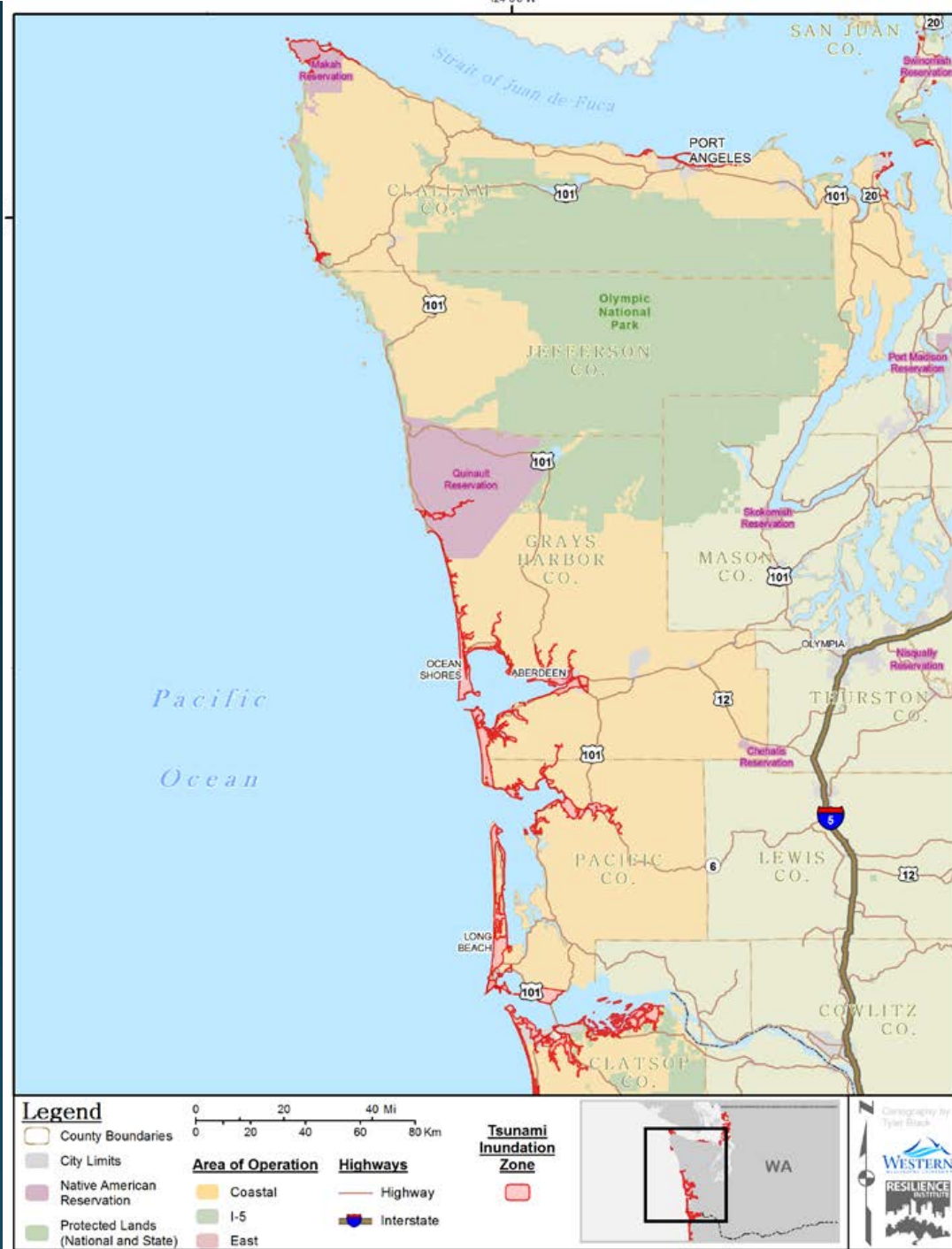
CSZ Quake Impacts

- Along the I-5 corridor there will be up to 6 minutes of shaking
- 30% of G of ground motion
- The long duration of shaking will result in extensive liquefaction



Coastal Tsunami Inundation Area

- The coastal areas of WA and OR will be heavily impacted
- In WA and OR 60K people live in the inundation zone
- Depending on the season another 115K would be at risk
- The first waves would hit in 30-60 minutes



Fortunately the Lower Puget Sound is Not in Danger from a Coastal Tsunami

- Because of the geographic east/west orientation of the Strait of Juan de Fuca, however
- Seiches (sloshing) will occur on local water bodies

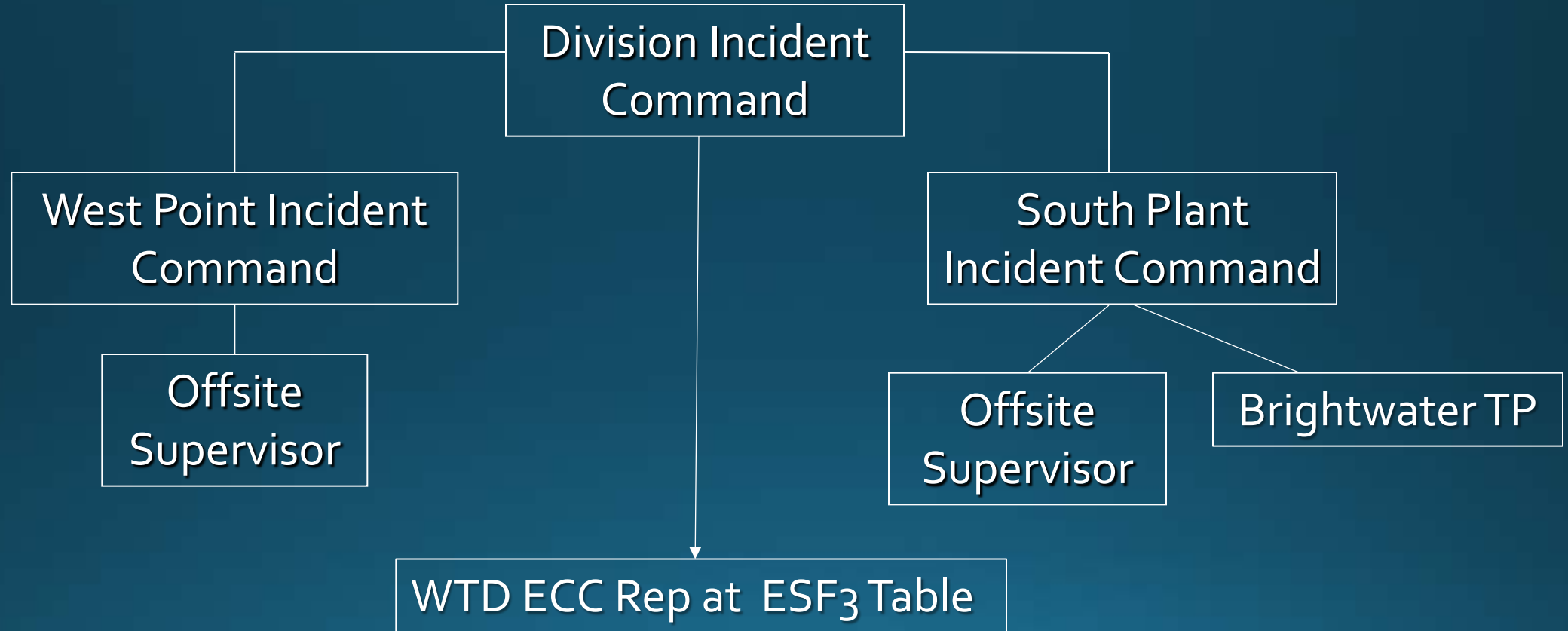


During the exercise the WTD will

- Test our earthquake response procedures, including assembly and roll call
- Practice the implementation of our Division Incident Command procedures
- Test our ability to communicate from the plants to King Street Center and to the KC ECC using the 800 MHz radio system
- Test our ability to perform damage assessments using Applied Technology Council's (ATC-20) protocols



WTD Division Operations Center



Emergency Operations Centers (EOC) and the KC Emergency Coordination Center (ECC)

EOCs

- Local Cities and Special Purpose Districts manage their emergencies through their cities' EOCs
- They provide damage/situation reports to the ECC
- Can request assistance or resources through the ECC

KC ECC

- Coordinates emergency activities across the county



- DNRP staffs the Emergency Support Function (ESF) 3 section which coordinates public works activities

WTD is Developing a Resiliency and Recovery Plan

- To improve our disaster resilience
- Conduct Vulnerability Assessments of our critical facilities
- Identify retrofits to improve the resilience of key facilities



Earthquake Preparedness Resources

- CREW –Cascadia Region Earthquake Workgroup
- Cascadia Rising Exercise Scenario Document
- Putting Down Roots in Earthquake Country
- To access the video in this presentation -YouTube:
Tectonic Earthquakes of the Pacific Northwest
- Seminar presentation by Don Ballantyne, PE on the effects earthquakes on wastewater conveyance systems (90 minutes)
<https://www.youtube.com/watch?v=28o1aMbOEvM&feature=youtu.be>
or contact Allen Alston for more information

Questions?

