



11/19/2014

**King County**

# BFI WINTER OPERATIONS 2014



KING COUNTY INTERNATIONAL AIRPORT/ BOEING FIELD  
November 20, 2014

# INTRODUCTIONS (MIKE)

---

- ✕ AROUND THE ROOM
- ✕ AIRPORT OPERATIONS
- ✕ AIRPORT MAINTENANCE
- ✕ ARFF



# AGENDA

---

- ❑ Winter Season 2014 preparation
- ❑ SICP /Airfield Priorities
- ❑ Personnel
- ❑ Communication
- ❑ Aircraft Deicing
- ❑ Safety Tips
- ❑ Equipment
- ❑ Spill Training (FBO's and other Fuelers)

# 2014 WINTER SEASON PREPARATION

---

- ✖ Snow and Ice Control Plan (SICP) training and review:
  - + Airport Operations
  - + ARFF
  - + Maintenance
  - + Air Traffic Control
  - + Tenants
- ✖ Winter fleet preparation (winterization)

# WINTER WEATHER OUTLOOK

- ❑ 2013 Winter season- 3 inches total (1" December & 3" in February)
- ❑ 2014 ?



OR





# SNOW AND ICE CONTROL PLAN (SICP)

- ✖ FAA approved document; reviewed annually in the 4<sup>th</sup> quarter
- ✖ Reviews and/or changes, topics include
  - + Airfield Priorities
  - + Airfield Clearance Times
  - + Snow Clearing Operations
  - + Runway Incursion Mitigations
  - + Runway Surface Assessment Reporting

# AIRFIELD CLEARANCE TIMES

- ✖ According to the AC 150-5200-30C: required to remove snow from all Priority 1 surfaces in 30 min.



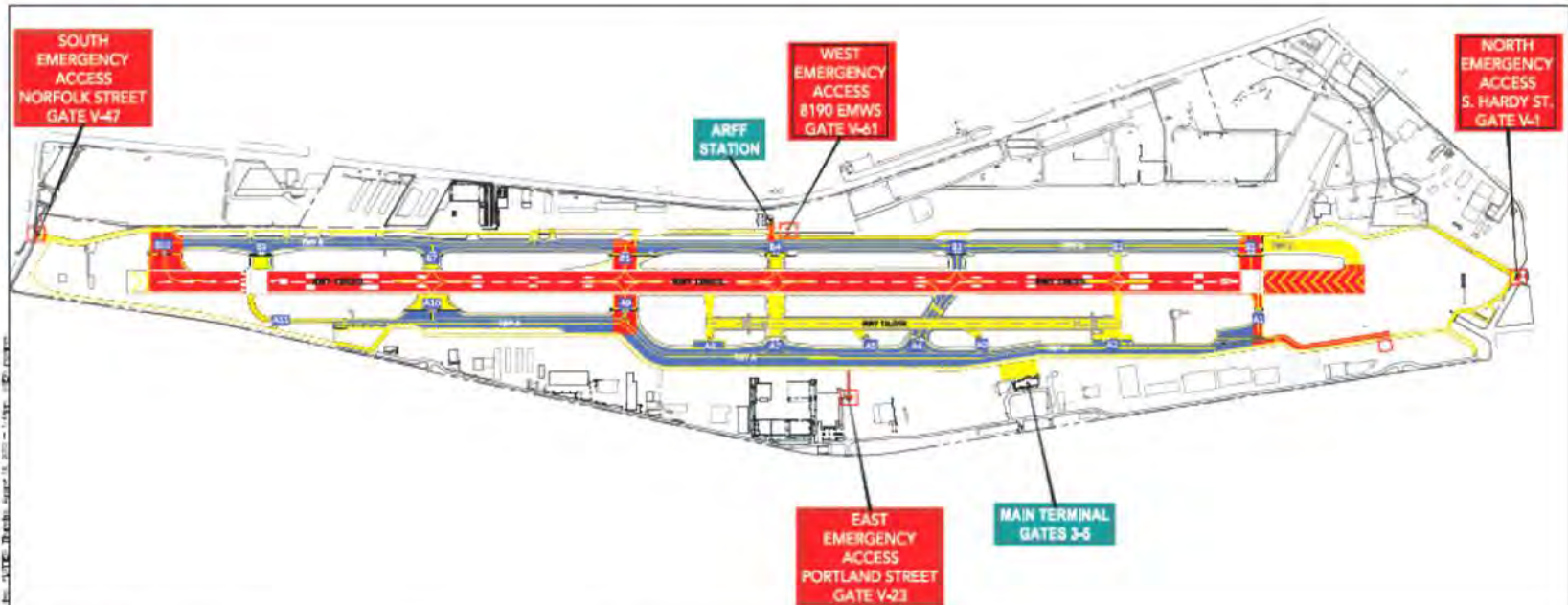
Every effort will be made to meet these times. If unable, Airport Operations will make proper notifications

Snow removal efforts will be limited to Priority 1 surfaces until complete unless otherwise directed

Snow removal efforts will be simultaneously conducted on Priority 1 RWY/TWY surfaces in addition to response gates/ARFF access/lighting



# AIRFIELD PRIORITIES



## LEGEND



**PRIORITY 1:** Primary Runway 13R/31L (including edge lights, threshold lights & markings)  
Taxiway Intersections A1, A9, B1, B5, B10 & Taxiway A-Airline Northwest  
ARFF Station Access (driveway), Emergency Access Gates.



**PRIORITY 2:** Taxiway Alpha (full length)  
Taxiway Bravo (full length)  
Taxiway Intersections A4, B3



**PRIORITY 3:** Vehicle Service Road  
Terminal Ramp (Gates 3-5)  
Utility Runway 13L/31R (full length & width)  
Taxiway Intersections A2, A3, A5, A7, A8, A10, A11, B2, B4, B7, B9 & ZULU

SNOW & ICE PLAN | AIRFIELD PRIORITY MAP  
APPENDIX 1



**King County**  
International Airport Boeing Field



# AIRFIELD CLEARING PRIORITIES

Priority 1- RWY 13R/31L, TWY int. A1, A9, B1, B5, B10 & Taxilane A- (Airlift Northwest), ARFF access and Emergency Gates

Priority 2- TWY int. A4, B3, TWY A & B

Priority 3- RWY 13L/31R, Terminal ramp, service road, special use pavement and all other TWY intersections

\*Snow removal addressed by priority beginning with Priority 1

## AIRPORT OPERATIONS

- ✖ Weather
- ✖ Continuous Airfield Monitoring
- ✖ NOTAMs
- ✖ Snow Desk
- ✖ Runway Friction Testing
- ✖ Liaise with ATCT, Tenants, and Stakeholders
- ✖ Opening and closing surfaces
- ✖ Snow team

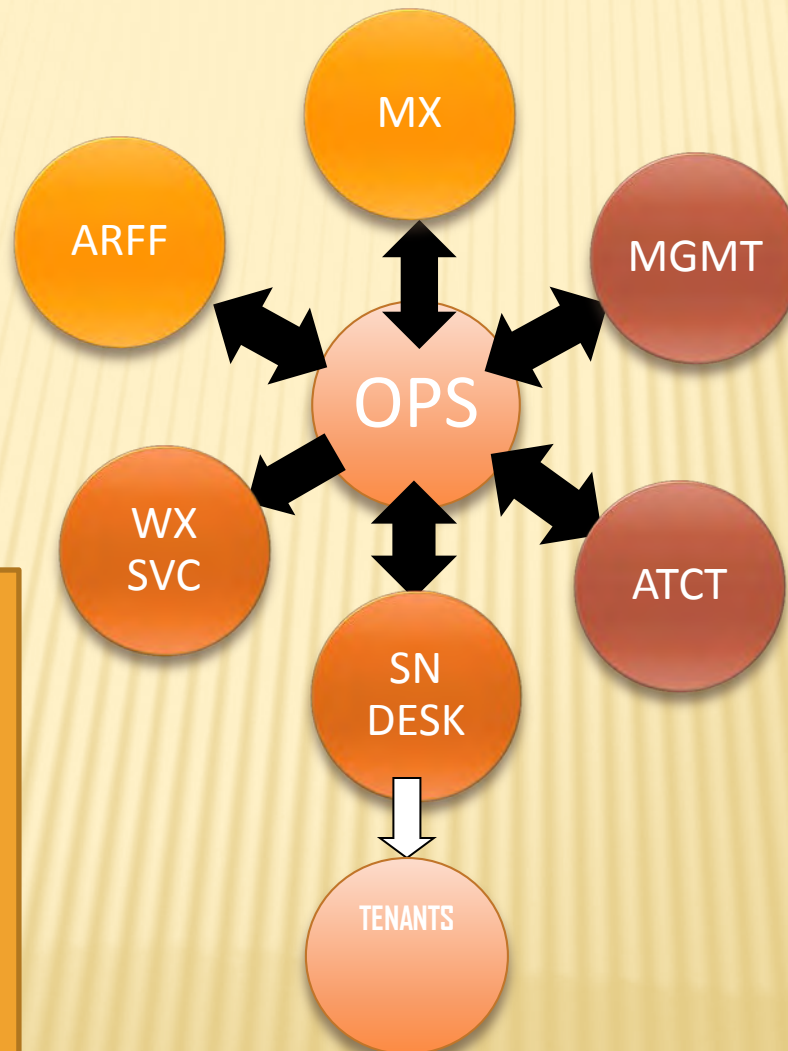
## MAINTENANCE

- ✖ Snow removal clearing
- ✖ Maintaining airport owned buildings/ gates
- ✖ Staffing
- ✖ Inventory and supplies
- ✖ Snow team

# PERSONNEL



# COMMUNICATION



ARFF- Aircraft Rescue and Fire Fighting  
WX - National Weather & Services & DTN  
OPS- Airport Operations  
ATCT – Air Traffic Control Tower  
MX- Maintenance  
Snow desk

## AIRCRAFT DEICING

- ✖ Gates 3-6 public use deicing
- ✖ Performed by FBO's and/or cargo tenants
- ✖ Airport's deicing pad is active between the months of November and February



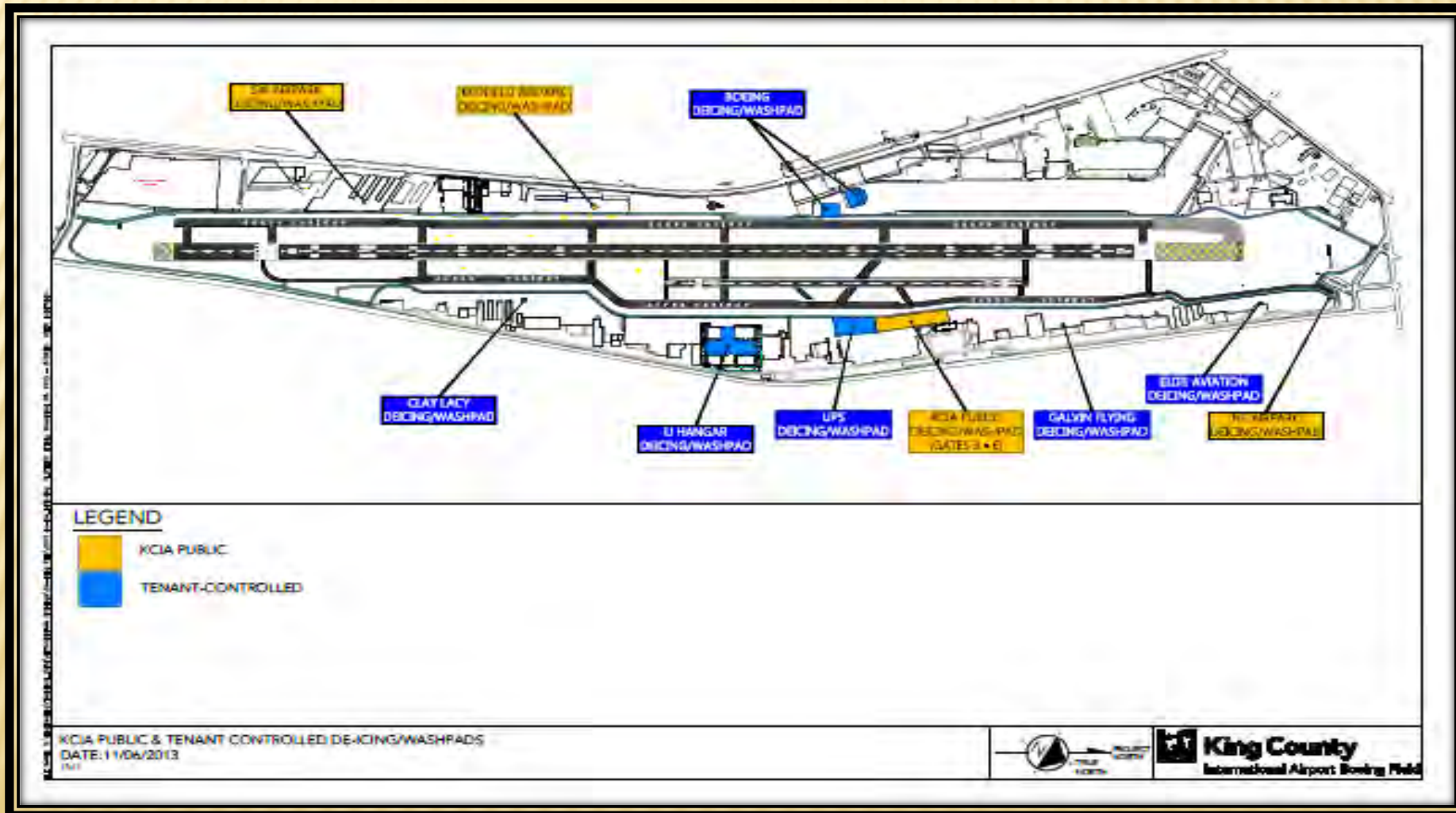
## RUNWAY DEICING

- ✖ Use of E-36
- ✖ Used as an anti-ice or de-ice
- ✖ Performed by airport maintenance





# DEICING LOCATIONS



# SAFETY TIPS

- Vehicular speed
- Ramp Safety
- Obscured signs and markings
- Reduced visibility  
weather and or  
equipment





# PILOT BRAKING ACTION REPORTS

- ✖ Air Traffic passes pilot Braking Action reports during snow events to Airport Operations personnel
- ✖ Information given could denote an upward or downward trend to the airfield surfaces
  - + BA Good
  - + BA Fair
  - + BA Poor
  - + BA Nil

# UPCOMING TRAINING

---

- ✕ Tabletop Exercise
- ✕ Runway Friction Tester Training-
  - ✕ Winter Briefings
  - ✕ Post Storm meetings
  - ✕ Post Season meetings



# FLEET PRACTICE

## Dry Runs :

- Joint training with Maintenance and Airport Operations with
- Formation/ Tactics
- Communication



# EQUIPMENT

KCIA has on hand for the 2014 winter season  
18000 gallons of Liquid Deicer- E36

5 plows

2 blowers

1 grader



1 snow broom

1 RWY deicer truck- 1100 gallon truck, 1 deicer trailer  
Solid Deicer Naac- 6600 lbs.

1 Vericom Decelerometer- Runway Friction Tester (RFT)  
Vericom 4000



# REVIEW: HOW TO CONDUCT SNOW REMOVAL



NO....



No...

Well, Maybe..

# CONTACT INFO

- ✖ Airport Operations- 206.296.7334
- ✖ Airport Administration- 206.296.7380
- ✖ Environmental-206.296.7597
- ✖ Airport Police- 206.296.7392
- ✖ SICP data- 206.296.7458 or [michele.mwangemi@kingcounty.gov](mailto:michele.mwangemi@kingcounty.gov)





# AIRPORT SPILL TRAINING PRESENTATION BY ARFF

ALL APPLICABLE FUELERS

---