

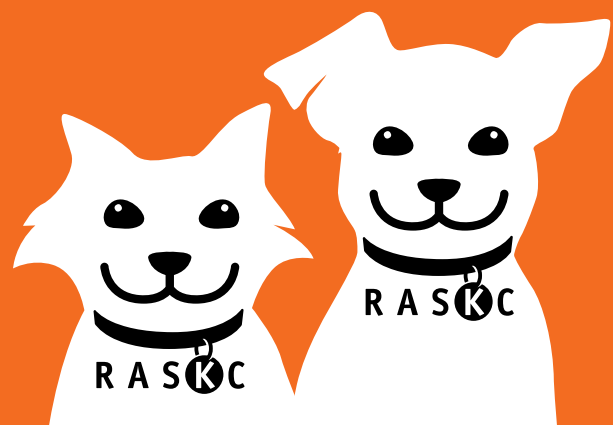
# PLEASE DONATE TO SAVE LIVES



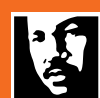
**Donate cash, pet items,  
or your time to support  
our programs.**

*Donations may be tax deductible - consult your tax advisor  
King County Tax ID # 91-6001327*

[www.kingcounty.gov/pets](http://www.kingcounty.gov/pets)



**Regional Animal  
Services of**



**King County**