

2016 Update

King County Comprehensive Plan

Summary of the Public Review Draft

**Fall 2015
Community Meetings Presentation**

Agenda

- 30 min.** **Open House ... talk to King County staff
about the *Draft Plan & Other Topics***
- 5 min.** **Welcoming Remarks**
- 5 min.** **GMA 25th Anniversary Video**
- 60 min.** **Presentation & Discussion on Draft Plan**
- 20 min.** **Discussion of Other Topics**

Presentation & Overview of Public Review Draft

- **Overview of Growth Management**
- **Overview and history of Comprehensive Plan**
- **Summary of Scope of Work**
- **Proposed Changes in Public Review Draft**
- **Issues specific to meeting location**

- **Time for other topics**



King County

OVERVIEW OF GROWTH MANAGEMENT

Overview of Growth Management

First, why Plan?

- **Planning is important because it....**
 - **Protects good things about your community**
 - **Represents a shared vision for the future**
 - **Identifies community needs**
 - **Identifies strategies to meet these needs**
 - **Builds your sense of community**

Overview of Growth Management

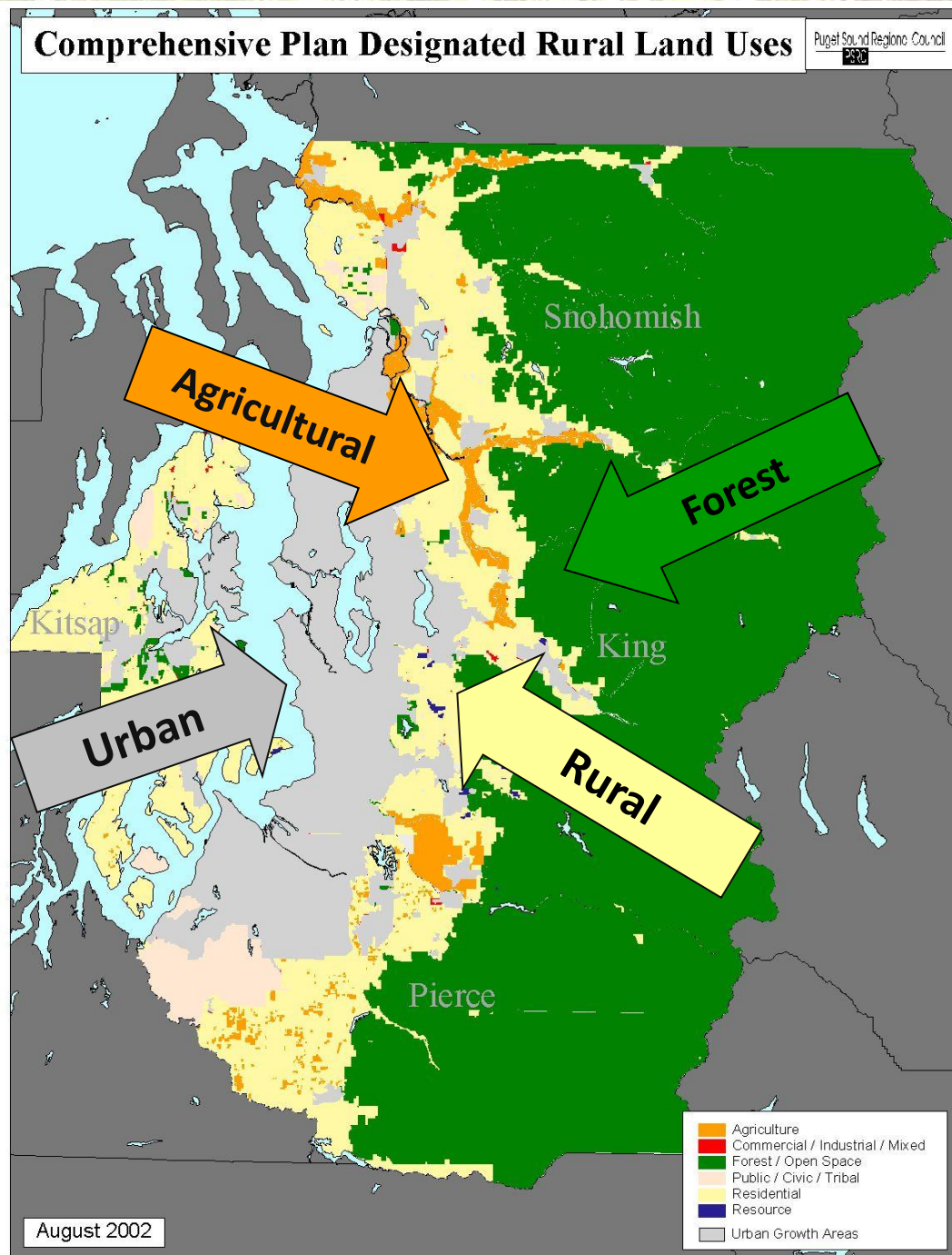
- 14 goals addressing **built** environment, **natural** environment, **service** provision:
 - Focus growth into urban areas, protect rural areas
 - Conserve farm, forest and mineral lands
 - Protect environmentally sensitive areas
 - Protect property rights
 - Shoreline management

Overview of Growth Management

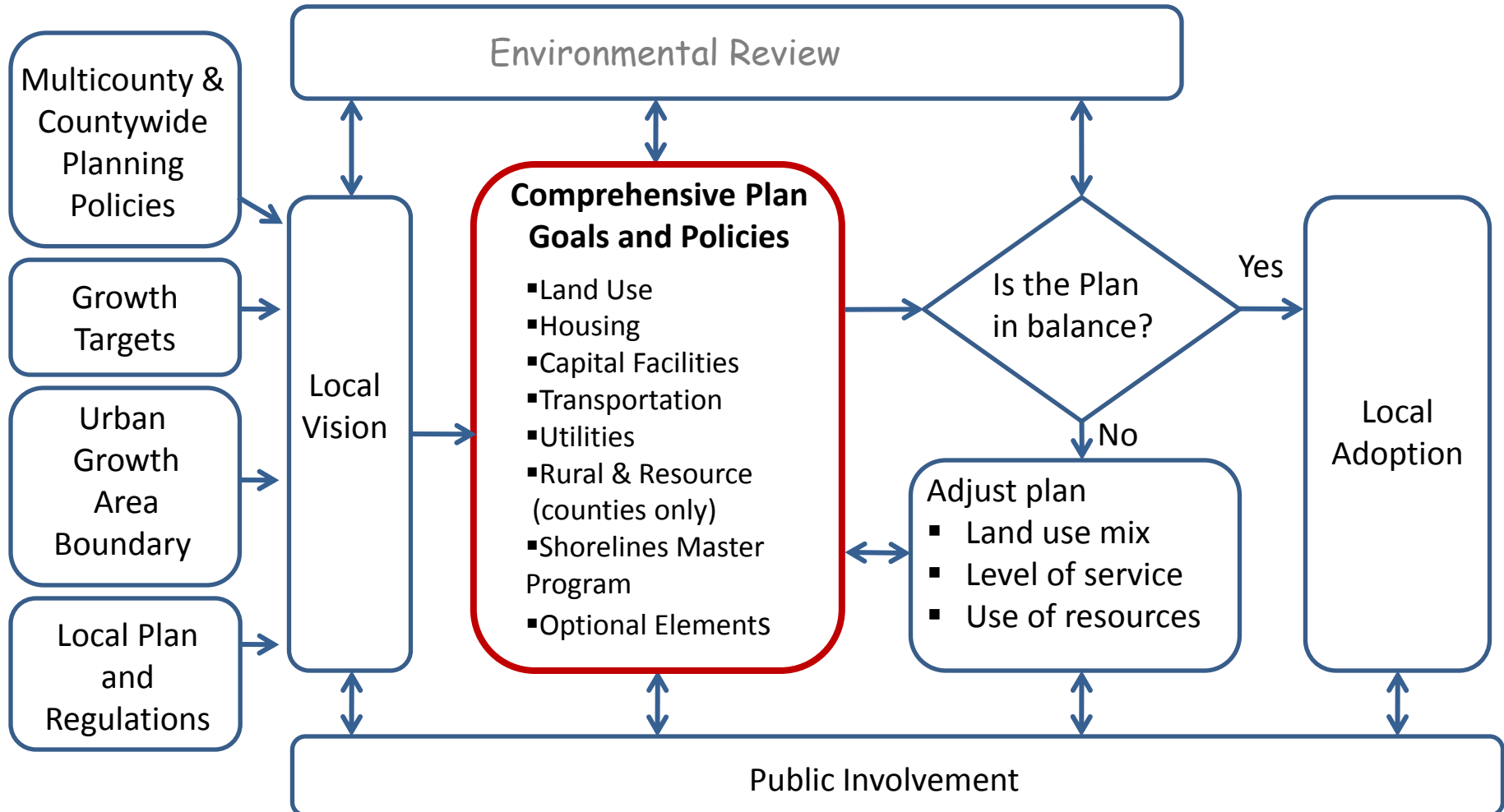
- Requires regional, countywide and jurisdictional-level policies
 - Requires countywide agreement on growth assumptions
- Requires development regulations be consistent with and implement the policies in the plan
- County comprehensive plans address:
 - **Local govt. role** including permitting, zoning and land use
 - **Regional govt. role** including transit, parks, solid waste, establishment of UGA

GMA Land Uses

- Urban Incorporated
- Urban Annxtn. Area
- Rural Areas
- Agricultural lands
- Forest lands
- Mineral lands
- Environmentally sensitive areas



Overview of Growth Management





King County

OVERVIEW OF COMPREHENSIVE PLAN

Overview of Plan -History-

- 1964 Plan** – **First Comprehensive Plan**
- 1970s-80s** – **Community planning program**
- 1985 Plan** – **Urban Growth Area established**
- 1990** – **Growth Management Act adopted**
- 1992-94** – **Countywide Planning Policies adopted and ratified**
- 1994 Plan** – **First GMA plan refines UGA, Ag Districts, housing on larger rural lots, Forest Districts, open space areas**
- 1995** – **New development regulations adopted**
- 1995** – **VISION 2040 Multicounty Planning Policies**

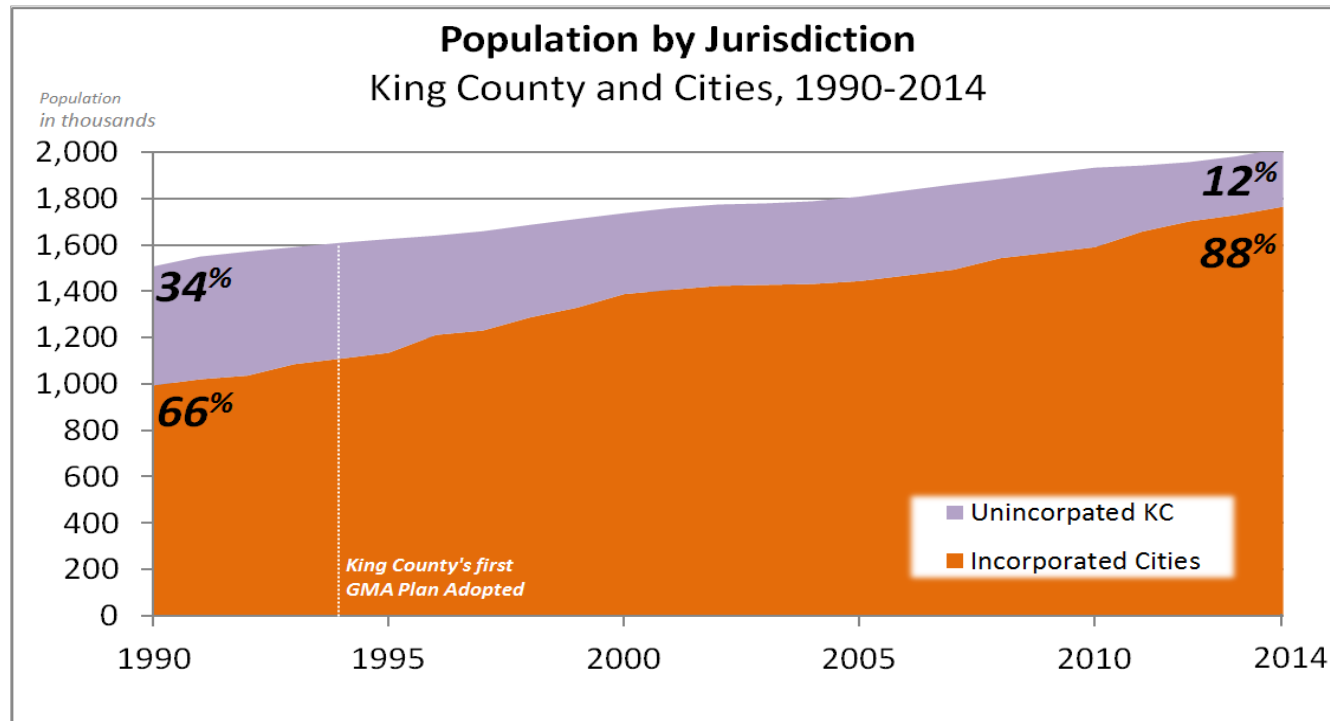
Overview of Plan -History-

- 1998** – Four year cycle established for 2000
- 2000 Plan** – Acknowledges changing County roles, integrated land use & transportation, endangered species act
- 2004 Plan** – Cottage industries, annexation policies, critical areas Ordinance adopted
- 2007** – Buildable Lands Report
- 2008** – VISION 2040 Multicounty Planning Policies Updated & Regional Growth Strategy Adopted

Overview of Plan -History-

- 2008 Plan** – Public health, equity and climate change policies, TDR changes in urban areas, simplifies concurrency, low-impact development recognized
- 2010** – Shoreline Master Plan added to Plan
- 2012** – Countywide Planning Policies updated
- 2012 Plan** – Integrates KC Strategic Plan, recognizes regional partnerships, green building, transit oriented development, supporting resource based jobs, farm worker housing, value added production

Overview of Plan -Growth over time-



- From 34% to 12% of county residents in unincorporated areas
- Still the local government today for approx. 120,00+ residents
- But, transitioning to regional and rural service provider

History of Plan

-Future growth targets-

Between 2006 and 2031...

	New Housing	New Jobs
12 Cities with Urban Centers	181,635 (78%)	368,690 (86%)
20 Other Cities in UGA	31,887 (14%)	45,873 (11%)
7 Cities in Rural Area	7,085 (3%)	5,095 (1%)
Unincorporated UGA	12,470 (5%)	8,410 (2%)
KC Total	233,077	428,068

- Regional agreement that about 95% of new housing to occur in cities

Overview of 2012 Plan -Guiding Principles-

- **Creating Sustainable Neighborhoods**
- **Preserving Open Space**
- **Directing Development Towards Existing Communities in the Urban Growth Area**
- **Providing a Variety of Transportation Choices**
- **Addressing Health Disparities**
- **Addressing Equity, Social and Environmental Justice**
- **Achieving Environmental Sustainability**
- **Managing Performance**



King County

TOWARDS A 2016 COMPREHENSIVE PLAN

Summary of Scope of Work

- **Motion 14531:**
 - 145 topical areas, 16 Area Studies, 6 Code Amendments
 - Public Participation Plan
- **Key themes:**
 - annexation areas
 - equity and social justice
 - water resources
 - performance metrics
 - transfer of development rights
 - climate change
 - affordable & innovative housing
 - the four-for-one program
 - resource lands and industries
 - transportation funding

Based on this....

After six months of...

- interdepartmental meetings,
- early input from Community Service Area Open Houses, and
- direction from Executive leadership...

**2016 Update
Public Review Draft**

King County Comprehensive Plan



Draft Proposed Changes

Presented today as follows:

- **Categorized into broad themes**
- **Summarized at a high-level**
 - **Okay to ask questions as we move through slides**
 - **Experts available to answer questions**
 - **But, moderator will need to manage the time**
- **Hope to leave time at the end for other topics**
 - **Meaning, presentation will move fast**
 - **Staff are available for follow-up over next 2 months**

Draft Proposed Changes

(changes paraphrased)

Updated Guiding Principles

- Creating Sustainable Neighborhoods
- Preserving and Maintaining Open Space and Resource Land
- Directing Development Towards Existing Communities in the Urban Growth Area Consistent with Growth Targets
- Providing a Variety of Efficient Multimodal Transportation Choices that Meet Community and Environmental Goals
- Addressing Health Disparities, Equity, Social and Environmental Justice
- Achieving Environmental Sustainability and Considering Impacts of Climate Change
- ~~Managing Performance~~ *(moved to Planning Framework)*

Draft Proposed Changes

Making the Plan More User-Friendly

- *Small but important issues given scale of Plan*
- Executive Summary and full Table of Contents
- Removed redundant text
- Acronyms spelled-out, other readability enhancements
- Improved template for maps
- Updated references to plans & programs
- Streamlined data, large tables moved to appendices

Draft Proposed Changes

Land Use Policy Amendments

- **Initiate subarea planning— defines geography and schedule**
- **Avoiding urban-serving facilities in rural area**
- **Removal of mining site conversion demonstration program**
- **TDR amenity funding in areas receiving 75 TDRs; potentially limit TDRs in annexation areas with interlocal agreements**
- **Incentives for annexation – joint planning, potential use of city standards / regulations, TDRs**

Draft Proposed Changes

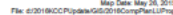
Environmental Policy Amendments

- **Policies on Climate Change; reflects goals in KC Strategic Climate Action Plan & County-Cities Climate Collaboration**
- **Updates throughout plan related to Stormwater Management Permit – low-impact development, sub-basin planning, green building code, credit-trading program**
- **Noxious weeds, beaver removal**
- **Enhanced landslide mapping and home-owner notification**
- **Local food initiative, healthy food retail, urban agriculture**

Draft Proposed Changes

Equity and Health Policy Amendments

- **New chapter on Housing and Human Services**
 - Consolidates and updated existing policies
 - Reflects Communities of Opportunity and Health & Human Services Transformation program
 - Calls for establishment of residential improvement districts in urban areas, new tools to increase housing density near transit stations and business corridors
- **Equity and social justice data, illustration, and policies**
- **Public health policies re: tobacco free parks and housing**



Draft Area Specific Proposals

WEST HILL: Finalize Addendum to 1994 Plan (March 2016)	ALLISON DOCKET: Remove Special District Overlay	DUTHIE HILL NOTCH: Continue to work 4-to-1 through GMPC (March 2016)
FAIRWOOD A: Study for Neighborhood Business Center designation (March 2016)	TIMMERMAN DOCKET: Withdrawn; land sold to new owner	FALL CITY: Continue to engage community on waste-water treatment planning
FEDERAL WAY: Density increase for one parcel for senior assisted housing	SNOQUALMIE INTERCHANGE: Deny, does not meet multiple 4-to-1 criteria	SNOQUALMIE PASS: Future Community Service Area Plan (2018)

Draft Area Specific Proposals

VASHON: Future Community Service Area Plan (early 2016)	NORTH BEND: Eligible for 4-to-1; consider if submitted	FAIRWOOD B: Study for Neighborhood Business designation (March 2016)
HIGHLINE: Future Community Service Area Plan (late 2016 to 2017)	CEDAR HILLS/ MAPLE VALLEY: Future Community Service Area Plan (2023, or when landfill closes)	TAYLOR MOUNTAIN FOREST: Forest Zoning KCDNRP TALL CHIEF: Agricultural Zoning
CARNATION: Eligible for 4-to-1; consider if submitted	MAPLE VALLEY INDUSTRIAL: Study Land Use and Special Overlay change (March 2016)	UGA TECH. ADJUSTMENTS: Reflects minor Right-of- Way adjustments KCDOT

Draft Code Amendments

- Amendments related to policy changes
- Agricultural **supportive and dependent uses** in APDs
- Flexibility for **temporary lodging**, such as **treehouses**, **historic communities**
- Flexibility for **alternative housing models**, including **micro-housing**
- Ingress & egress for new plats, including **traffic queuing**
- Update & consolidate **Agricultural Land code sections**
- Consider extension of **Plat Approvals timelines**

Next Steps

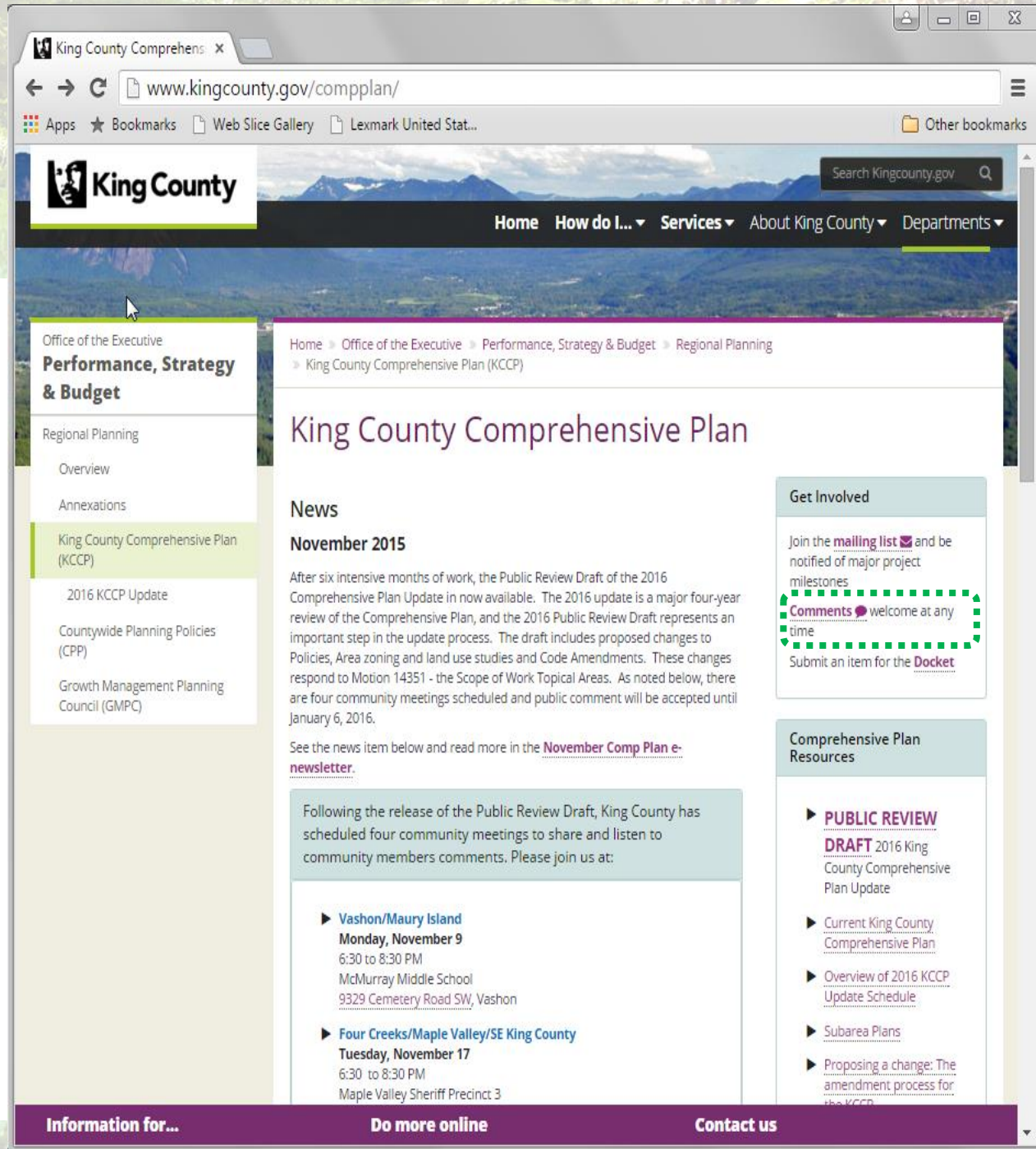
We are here



- 2 month public comment period, until January 6
- Review comments, refine plan, transmit to Council on March 1
- Work with Council to finalize plan
- Plan anticipated to be adopted in fall 2016

Help Improve the Plan

- Submit Comments **now**
- Read the Executive Recommended Plan **in March**
- Stay engaged when the Plan is **at the County Council**



The screenshot shows the King County Comprehensive Plan website. The browser address bar displays www.kingcounty.gov/compplan/. The website header includes the King County logo, a search bar, and navigation links: Home, How do I..., Services, About King County, and Departments. The main content area is titled "King County Comprehensive Plan" and features a "News" section for November 2015. The news item, dated November 2015, discusses the Public Review Draft of the 2016 Comprehensive Plan Update, which is a major four-year review. It mentions that the draft includes proposed changes to Policies, Area zoning and land use studies and Code Amendments. These changes respond to Motion 14351 - the Scope of Work Topical Areas. As noted below, there are four community meetings scheduled and public comment will be accepted until January 6, 2016. The news item also mentions that more information can be found in the [November Comp Plan e-newsletter](#). Below the news item, there is a section titled "Following the release of the Public Review Draft, King County has scheduled four community meetings to share and listen to community members comments. Please join us at:" which lists two meetings: "Vashon/Maury Island Monday, November 9 6:30 to 8:30 PM McMurray Middle School 9329 Cemetery Road SW, Vashon" and "Four Creeks/Maple Valley/SE King County Tuesday, November 17 6:30 to 8:30 PM Maple Valley Sheriff Precinct 3". On the right side of the page, there is a "Get Involved" section with a link to join the mailing list and a "Comments" section with a link to submit an item for the Docket. At the bottom of the page, there is a "Comprehensive Plan Resources" section with links to the Public Review Draft, Current King County Comprehensive Plan, Overview of 2016 KCCP Update Schedule, Subarea Plans, and Proposing a change: The amendment process for the KCCP. The footer of the website includes three sections: "Information for...", "Do more online", and "Contact us".



<http://www.kingcounty.gov/compplan/>

Contact:

Ivan Miller, AICP

Comprehensive Planning Manager

Office of Performance, Strategy and Budget

ivan.miller@kingcounty.gov | 206-263-8297