

SEATTLE

L I N C

LEADERSHIP, INTERVENTION & CHANGE



Background

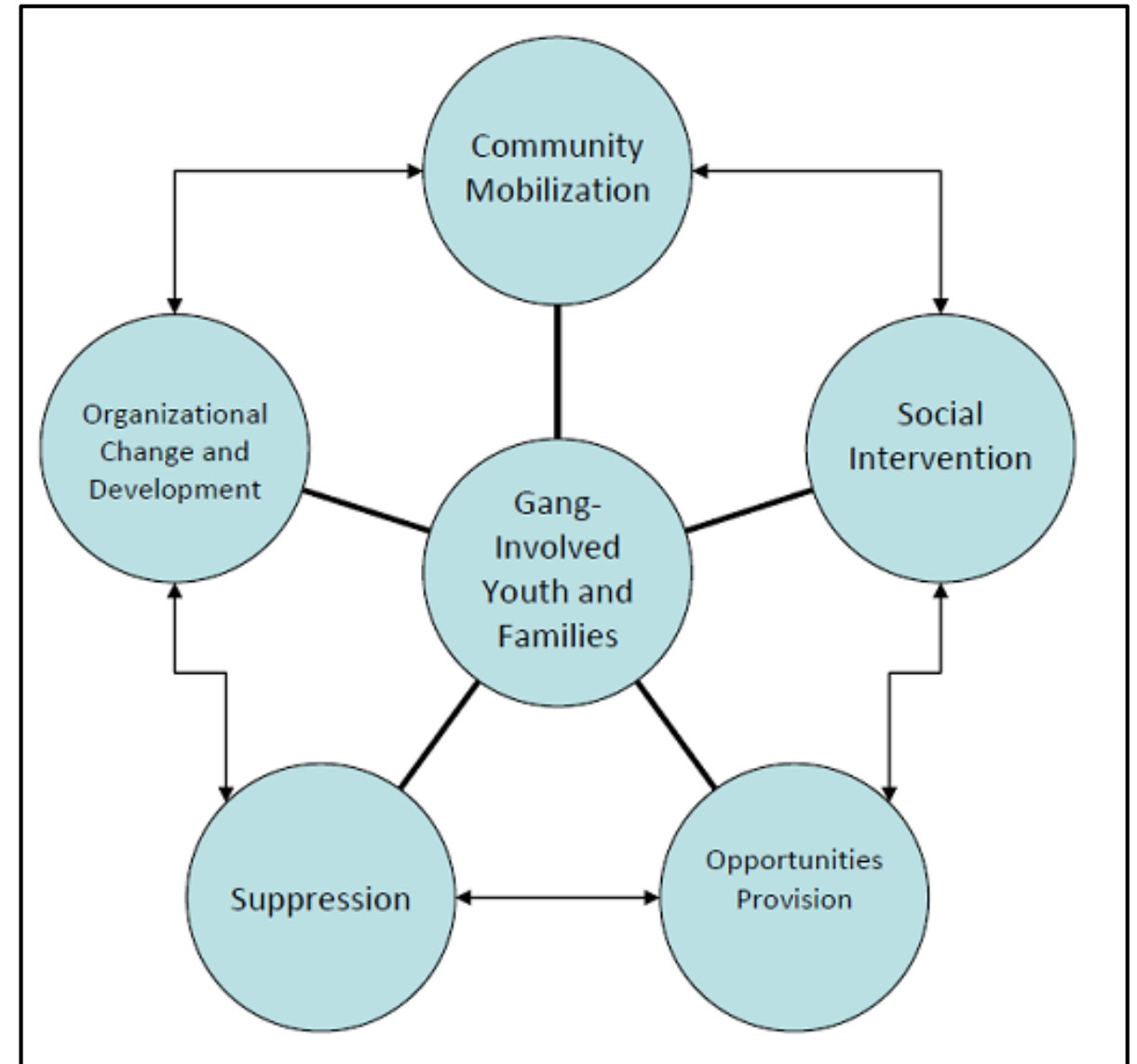
In 2011, Center for Children & Youth Justice (CCYJ) began implementation of the Office of Juvenile Justice & Delinquency Prevention (OJJDP) Comprehensive Gang Model (CGM) in Suburban King County

In 2016, CCYJ expanded efforts to include the City of Seattle, launch Seattle LINC and oversee county wide implementation of the CGM and a regional comprehensive approach to reduce group violence.

OJJDP CGM Overview

The CGM utilizes a combination of activities, including policy initiatives and direct service provision, to reduce youth and young adult gang/group involvement and associated violence. CGM sites are required to use a combination of the following five strategies:

- Community Mobilization
- Opportunities Provision
- Social Intervention
- Organizational Change and Development
- Suppression



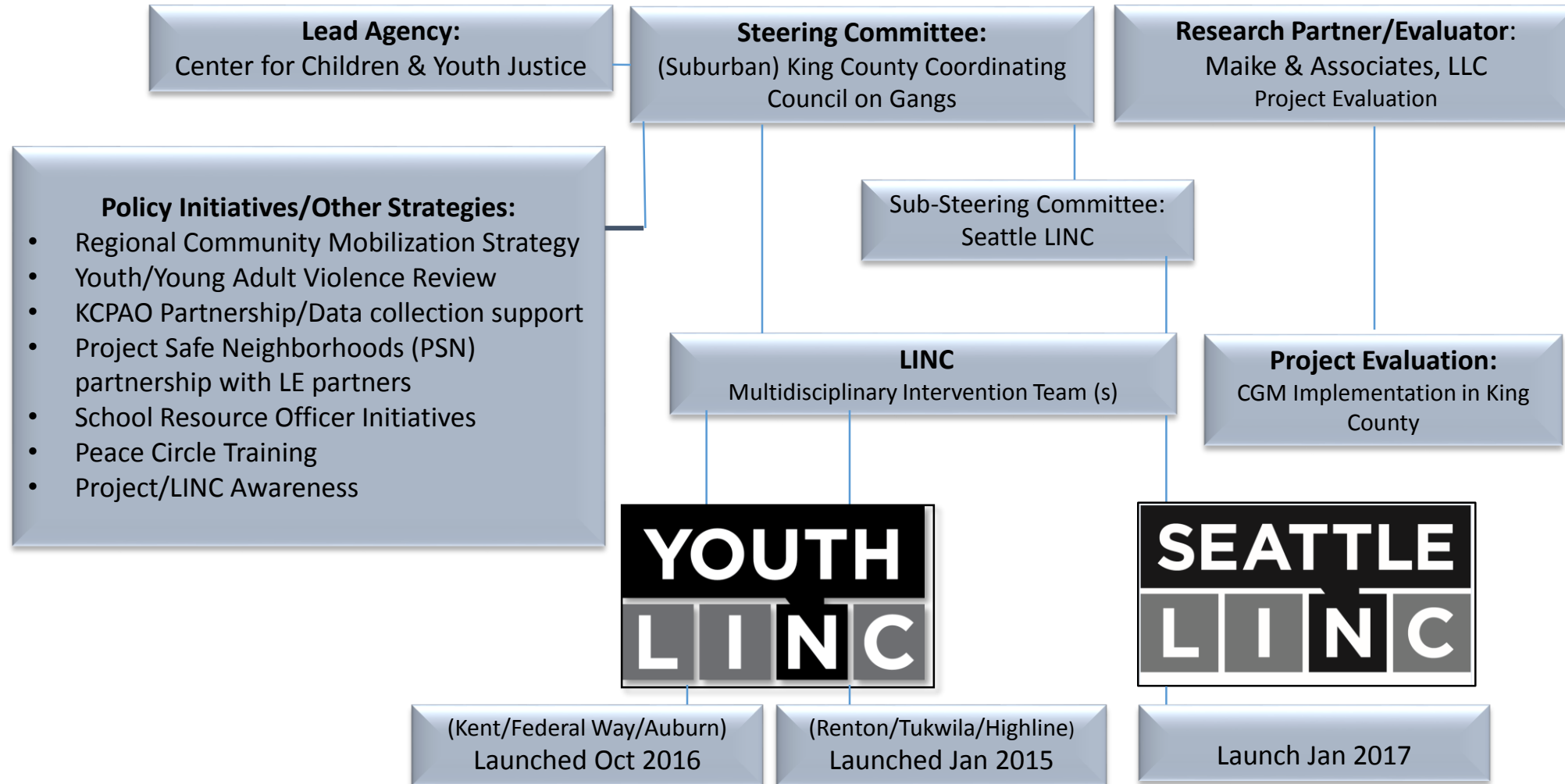
CGM – Key Components

- **Lead Agency:** Center for Children & Youth Justice
- **Research Partner:** Maiké & Associates, LLC
- **Steering Committee**
 - Suburban King County Coordinating Council on Gangs (SKCCCCG) convened 2011
 - Seattle LINC Steering Committee Convened November 2016
 - Seattle LINC Steering Committee Members join SKCCCCG to form regional Steering Committee to oversee model implementation: mid 2017
- **Community Assessment**
 - SKCCCCG Community Assessment completed March 2013
 - Seattle LINC Community Assessment completed November 2016

CGM – Key Components

- Implementation Plan
 - SKCCCG Implementation Plan completed October 2013
 - Seattle LINC Implementation Plan – February 2017
- Combined model strategies and policy initiatives
 - Ongoing
- Direct service provision through Multidisciplinary Intervention Team
 - Youth LINC (Highline/Renton/Tukwila) convened January 2015
 - Youth LINC (Auburn/Federal Way/Kent convened October 2016
 - Seattle LINC convened January 2017

CGM in King County – Project Overview



Comprehensive Community Assessment: Using the Assessment Data

In this Model, Community Assessment data are used to:

- ☐ Identify the scope of a community's gang/group violence problem
- ☐ Inform development of a comprehensive implementation plan including the five model strategies
- ☐ Guide implementation of a multidisciplinary intervention team to provide coordinated services to appropriate clients
- ☐ Shape public policy
- ☐ Assess resource gaps and leverage existing programs/funding/services
- ☐ Develop funding requests

Seattle LINC Community Assessment Recommendations

1. Develop an implementation plan for the Comprehensive Gang Model
2. Empower the management team to implement the plan.
3. Focus efforts on people and geographic areas highlighted in this assessment.
4. Examine the relationship between African immigrants and group violence.
5. Continue to collect and validate group related data.

Implementation Plan Development: Purpose of the Implementation Plan

Based on the Community Assessment, the Implementation Plan will:

- Define goals and objectives of model implementation
- Identify target population/geographic area to be served by the Multidisciplinary Intervention Team
- Outline all project related activities in accordance with CGM strategies
- Require coordinated direct service provision through implementation of a Multidisciplinary Intervention Team (MDIT)

When finalized, the Implementation Plan will be incorporated into the revised SKCCCG Implementation Plan.

Multidisciplinary (MDIT) Team Overview: Seattle LINC

Purpose:

- To implement the social intervention and opportunities provision strategies of the CGM.
- Facilitated by CCYJ, this multidisciplinary team facilitates information-sharing and collaboration among agencies serving gang-involved youth/ young adults who are gang/group involved.
- The team-based approach helps ensure that all agencies working with these clients have a common goal and shared strategies for each client.



Multidisciplinary Intervention Team: Membership

- Service Providers
- Drug and Alcohol/Behavioral Health
- Employment Resources/Case Managers
- Street Outreach Workers
- Probation/Parole Staff
- Law Enforcement
- Faith based groups
- School representatives/Education service providers
- Family support/Housing services

Multidisciplinary Intervention Team: Goals

- Improve coordination and effectiveness of agencies serving gang/group-involved and at-risk clients
- Leverage existing resources to better serve gang/group-involved and at-risk clients
- Reduce gang/group-related crime and violence in the community
- Support implementation of CGM strategies throughout the target community
- Create systemic and community-wide change to reduce overall gang/group involvement and improve outcomes for youth and families

Multidisciplinary Intervention Team: Eligibility

Seattle LINC serves youth and young adults ages 16 – 24 who demonstrate risk based on the following factors:

- Self identify as gang/group involved, or self identifies as associating with gang/group involved peers
- Engaging in or experiencing family or peer violence
- At high risk for gang/group involvement
 - Example: known to associate with gang/group-involved peers or family members as determined by service providers, outreach workers, King County Juvenile Probation, and/or law enforcement
- May have current or past Juvenile/Criminal Justice System Involvement

Multidisciplinary Intervention Team: Referral Sources

Seattle LINC accepts youth referrals from the following sources:

- Seattle LINC member agencies – including schools and service providers
- YMCA Alive & Free Outreach Workers
- Law Enforcement Partners
- King County Juvenile Probation/Seattle Municipal Court

Multidisciplinary Intervention Team: Process

Team Agreements:

- Participation- agreement from each agency establishing participation in MDIT and defining roles
- Information Sharing and Confidentiality

Meetings:

- Team meets weekly to accept referrals, establish intervention plans, and review client progress.

Team Procedure:

- Review and accept referrals
- Establish initial intervention plans through consensus-based decision making and practitioner knowledge of client's goals and needs
- Review client intervention plans and client progress
- Collect data and track client outcomes
- Provide regular progress updates to Steering Committee members, project partners and funders

Multidisciplinary Intervention Team Service Provision

- Development of an individualized Intervention Plan
- Case Management
- Street Outreach intervention
- Employment Services and job readiness
- Education re-entry support, GED program enrollment, High School completion programs, Post-Secondary education
- Multi-Systemic Therapy (MST), Functional Family Therapy (FFT), Family Integration Therapy (FIT), Aggression Replacement Training (ART)
- Mental Health and/or Substance Abuse counseling and treatment
- Involvement in community programs and pro-social activities through local community based organizations and team partner agencies

Next Steps

As lead agency, CCYJ will:

- Provide staff support to SKCCCG and Seattle LINC Steering Committees
- Facilitate the Seattle LINC/Youth LINC Multidisciplinary Intervention Teams
- Provide ongoing technical assistance to team members on model implementation and Intervention Team procedures
- Continue accepting client referrals and cultivating referral sources
- Enroll eligible clients in coordinated services
- Track client data and outcomes
- Continue implementation of the CGM in King County in accordance with model best practices

Handouts

- OJJDP Comprehensive Gang Model Overview
- Seattle LINC Community Assessment Brief
- Seattle LINC Steering Committee membership Roster
- SKCCCG Steering Committee Membership Roster
- Seattle LINC Multidisciplinary Intervention Team Overview

Questions/Information:

- Mahogany Villars, mvillars@ccyj.org or SeattleLINC@ccyj.org
- Anica Stieve, astieve@ccyj.org or YouthLINC@ccyj.org