



King County

Department of Natural Resources and Parks
Wastewater Treatment Division

West Point Treatment Plant SEWER NEWS

www.kingcounty.gov/wtd

FALL 2015

GOOD NEWS...West Point Treatment Plant Turns 50!

Did you know that in 1965 raw sewage flowed into the Puget Sound?

King County's wastewater system has been protecting Puget Sound for 50 years. The West Point Treatment Plant will celebrate its 50th Anniversary in 2016. King County's South Treatment Plant turns 50 in 2015. The County is hosting a year-long celebration. Look for us at community events like Seafair and join the fun on social media.



King County

Department of Natural Resources and Parks
Wastewater Treatment Division



@kingcountyWTD

West Point in 1965



West Point Treatment plant today



PROJECT UPDATES

Save yourself the aggravation, don't park in the West Point's emergency turnaround areas

King County stepped up parking enforcement outside the West Point Treatment Plant at Discovery Park. Incidents of vandalism and other criminal activities around the treatment plant and the beach have become a growing health and safety concern over the past several years. The community suggested increased towing to address illegal activities.

Vehicles are not permitted to park in the emergency access areas next to the beach, on the walkways, in fire lanes or in the turnaround areas. Illegally parked cars will be towed at owner's expense.

Since towing increased, there has been marked improvement to illegal parking, but access at the emergency turnaround and walkways next to the beach continues to pose problems for emergency vehicles.

"Ideally, we'd like to avoid towing any vehicles," said King County Wastewater Treatment Division Director Pam Elardo. "Our goal is to let people know we're serious about towing violators so people park only in designated areas."

King County installed additional signage and clearly designated no-parking zones to make sure people understand parking rules. Seattle Parks enforces parking at the designated permitted parking areas at the beach. King County only tows from the emergency turnaround areas near the treatment plant.

Over the next year, King County and Seattle Parks will evaluate how well increased enforcement resolves safety concerns. They will decide if additional measures are needed to control problems at the Discovery Park Beach area.

For more information about Discovery Park/West Point Treatment Plant Security, visit: www.kingcounty.gov/wp-access.



Illegally parked cars being towed.



King County has asked the City of Seattle to expand the allowable access hours for biosolids trucks

When West Point was upgraded in the early 1990s, hours of operations for biosolids trucks were limited to proposed hours of 8:30 a.m. to 4:30 p.m. and 6 p.m. to 9 p.m. daily under the original Council Conditional Use Permit issued in 1991. The permit also limited the number of biosolids truck trips to 13 per day. Due to improvements in biosolids processing, the average number of truck trips is now approximately four per day.

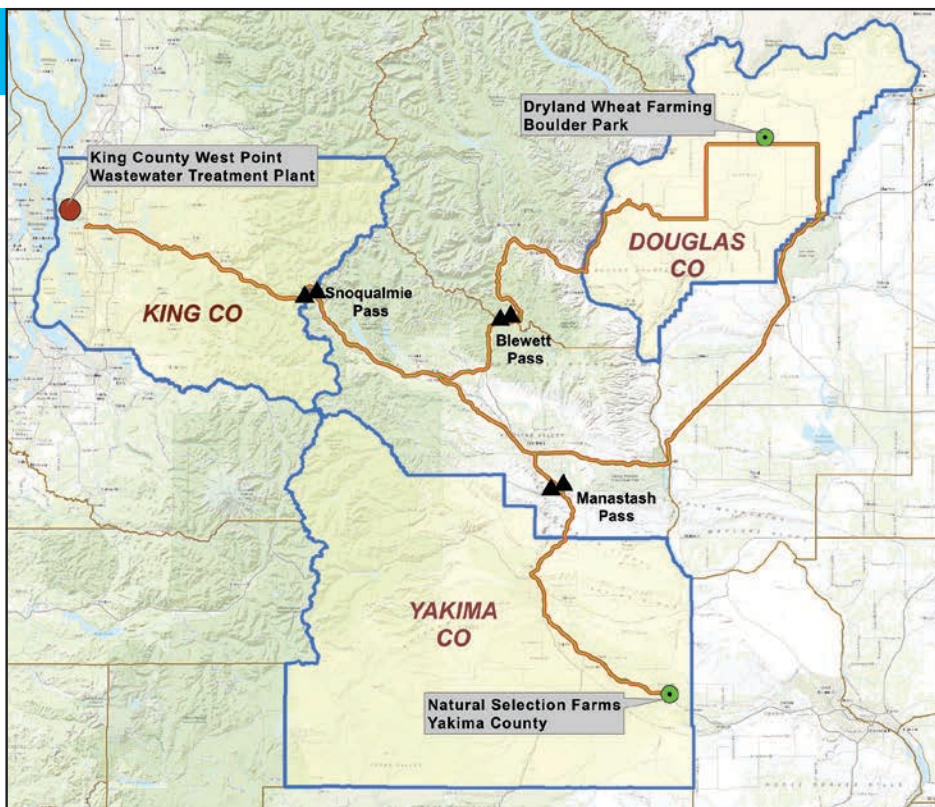


Since then, the federal government has restricted the maximum driving time for truck drivers to no more than 11 hours per day. Under the current hours of operation, it is becoming increasingly

difficult to complete the round trip to deliver biosolids from West Point to customers in Eastern Washington in one day. Traffic congestion throughout the city has caused delays in truck trips and disruptions in services. King County has asked the City of Seattle to change the morning start time for biosolids trucks from 8:30a.m. to 5:00 a.m.

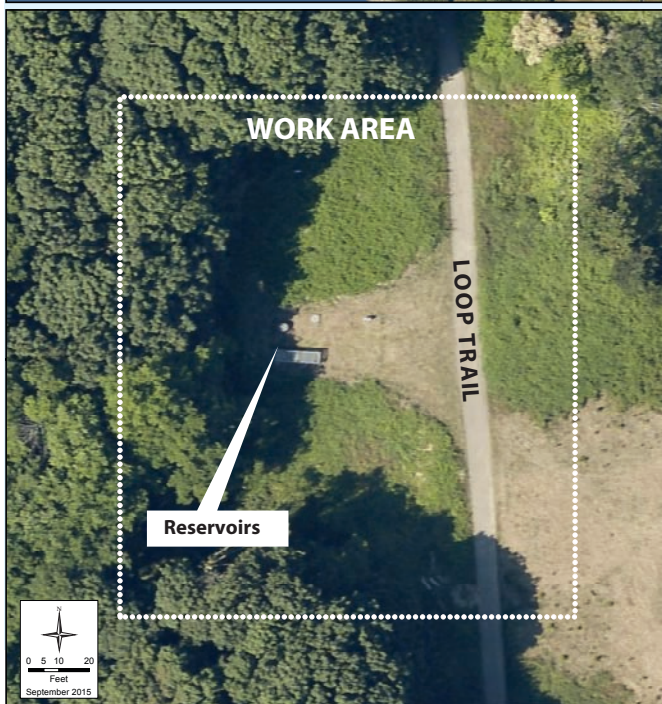
Benefits of Proposed Trucking Hours:

- ✓ Comply with new federal regulation
- ✓ Avoid peak traffic congestion
- ✓ Reduce fuel consumption and emissions



The Seattle Department of Planning and Development held a public meeting on August 26, 2015, at the Discovery Park Environmental Learning Center to gather comments from the community about King County's permit application for the proposed improvement to the biosolids trucking hours.

For details, visit: www.seattle.gov/dpd/ and search for "permit number 3017086".



Upgrade to Water Reservoirs near the Loop Trail in Discovery Park

In the next year, King County may need to make changes to the existing underground water reservoirs located above the treatment plant near the Loop Trail in Discovery Park. The reservoirs provide drinking water to the West Point Treatment Plant, the lighthouse and Coast Guard housing, and the water fountain on the beach. Some of the water is also used for treatment plant processes.

The project is currently being designed by King County project team. We will share more information as the project becomes more defined.

For more information about West Point Treatment Plant, visit: www.kingcounty.gov/westpoint.



**Department of
Natural Resources and Parks**
Wastewater Treatment Division
King Street Center
KSC-NR-0503, 201 S. Jackson St.
Seattle, WA 98104-3855

PRESORTED
STANDARD
US POSTAGE
PAID
SEATTLE WA
PERMIT NO 836



LOOK INSIDE!

- ▶ **West Point Treatment Plant turns 50**
- ▶ **New Parking Enforcement at West Point/Discovery Park**
- ▶ **Biosolids Truck Hours update**
- ▶ **Upgrade to Water Reservoirs near the Loop Trail**

West Point Treatment Plant has earned another Platinum Peak Performance Award

West Point Treatment Plant achieved 100 percent compliance with its National Pollutant Discharge Elimination System (NPDES) effluent permit limits in 2014. This was the plant's 13th consecutive year without a violation. The Peak Performance Award is issued by the National Association of Clean Water Agencies to recognize member agencies for excellence in permit compliance. By meeting NPDES limits, the plant continues to protect public health and the environment. The NPDES permit outlines the conditions under which King County can release treated wastewater to the environment. To comply, the county's treatment plants must remove various

pollutants from the wastewater. Ecology administers NPDES permits under authority delegated by the U.S. Environmental Protection Agency.

For more information about discharge permits in Washington State, visit:

www.kingcounty.gov/environment/wtd/About/System/NPDES.aspx.



Alternative Formats Available

Call 206-477-5371 or TTY: 711