



Water Quality Monitoring Update

As of Friday, February 17, 2017 water quality sampling data continues to improve at most sampling locations. Three consecutive days of acceptable data must be collect before the beaches can be opened, so beaches will remain closed through Monday, February 20. We will provide updates on Tuesday morning.

The following beach areas are closed as of February 17:

- **Discovery Park beaches north and south of West Point Treatment Plant**
- **Golden Gardens beach**
- **Carkeek Park beach**

We will update water quality data as it becomes available.

King County Wastewater Treatment Division works hard to provide safe, reliable service to our region. When large storms or unanticipated equipment issues cause overflows into our waterways, we provide public notification and begin sampling and testing water quality.

King County's [Environmental Laboratory](#) conducts sampling and analysis and reports results to [Public Health-Seattle/King County](#) (PHSKC). Warning signs posted on public access areas near affected waterways remain in place until PHSKC approves removal.

Two types of bacteria determine public health risk: fecal coliform bacteria and enterococcus. Both are shown for the latest collection dates.

Below you can find results from **water quality sampling results** related to the West Point Treatment Plant Emergency Bypass for **February 9 through February 17, 2017**.

An equipment failure at the time of heavy storms and high tides resulted in flooding in the plant. To protect the plant and allow crews to clean up and restore operations, incoming stormwater and wastewater were diverted through an emergency bypass to Puget Sound.

The West Point emergency bypass discharges offshore by the North Beach in Discovery Park. Currents travel north from this point.

You can find more information about water quality monitoring in recreational beach areas at the Washington Department of Ecology [beach program web page](#).

For more information:

Visit King County Wastewater Treatment Division on the Web at:

<http://www.kingcounty.gov/depts/dnrp/wtd.aspx>

For questions or concerns about this incident, contact Monica Van der Vieren at 206-477-5502 or monica.vandervieren@kingcounty.gov

ALTERNATIVE FORMATS AVAILABLE

206-684-1235 / 711 (TTY Relay)

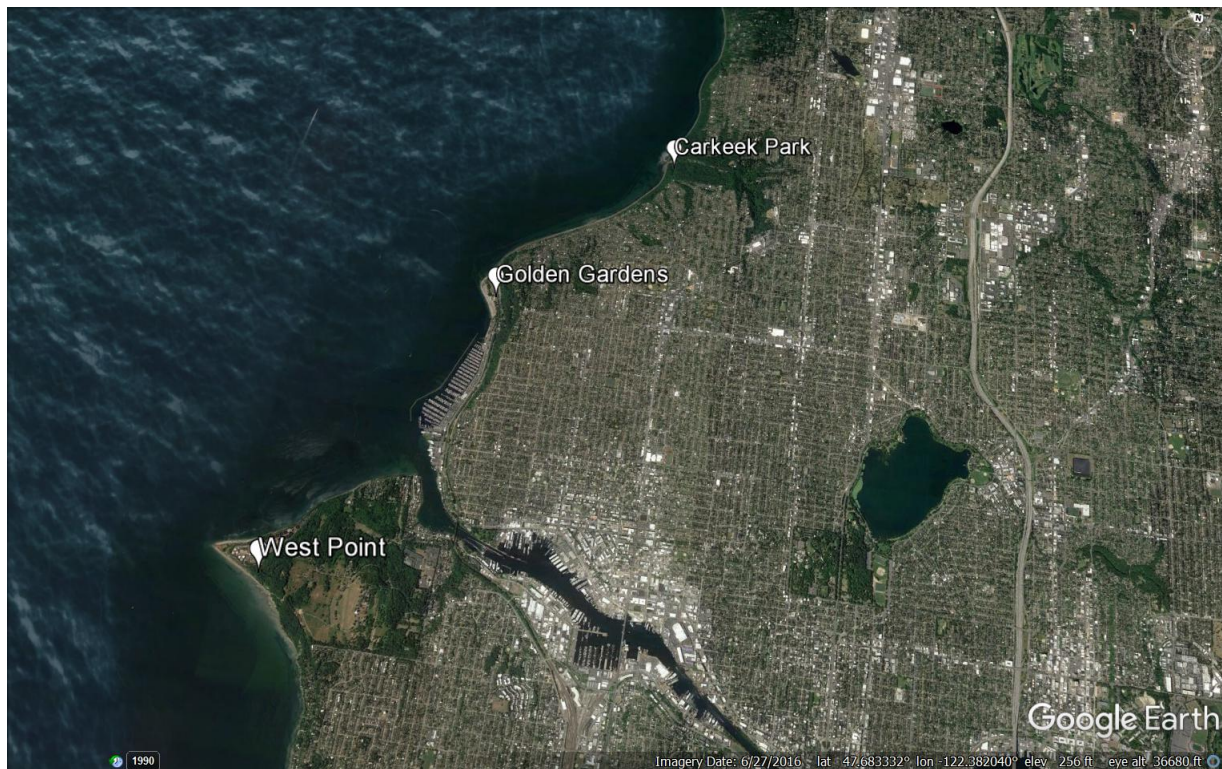


King County

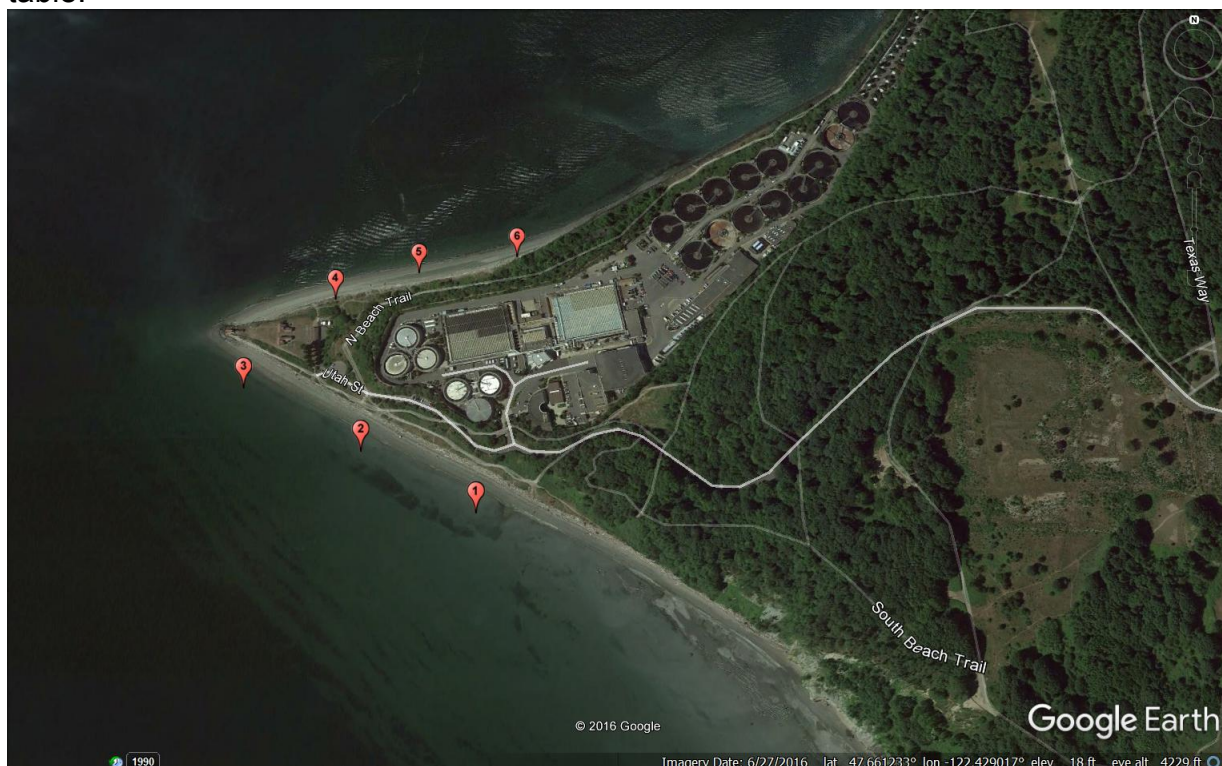
Department of Natural Resources and Parks
Wastewater Treatment Division

WEST POINT TREATMENT PLANT BYPASS

FEBRUARY 17, 2017



Above, aerial view of sampling locations associated with the West Point Treatment Plant Bypass. Below are numbered sampling sites around West Point, in Seattle's Magnolia neighborhood. The numbers on each pin correspond to a sampling site on the attached table.



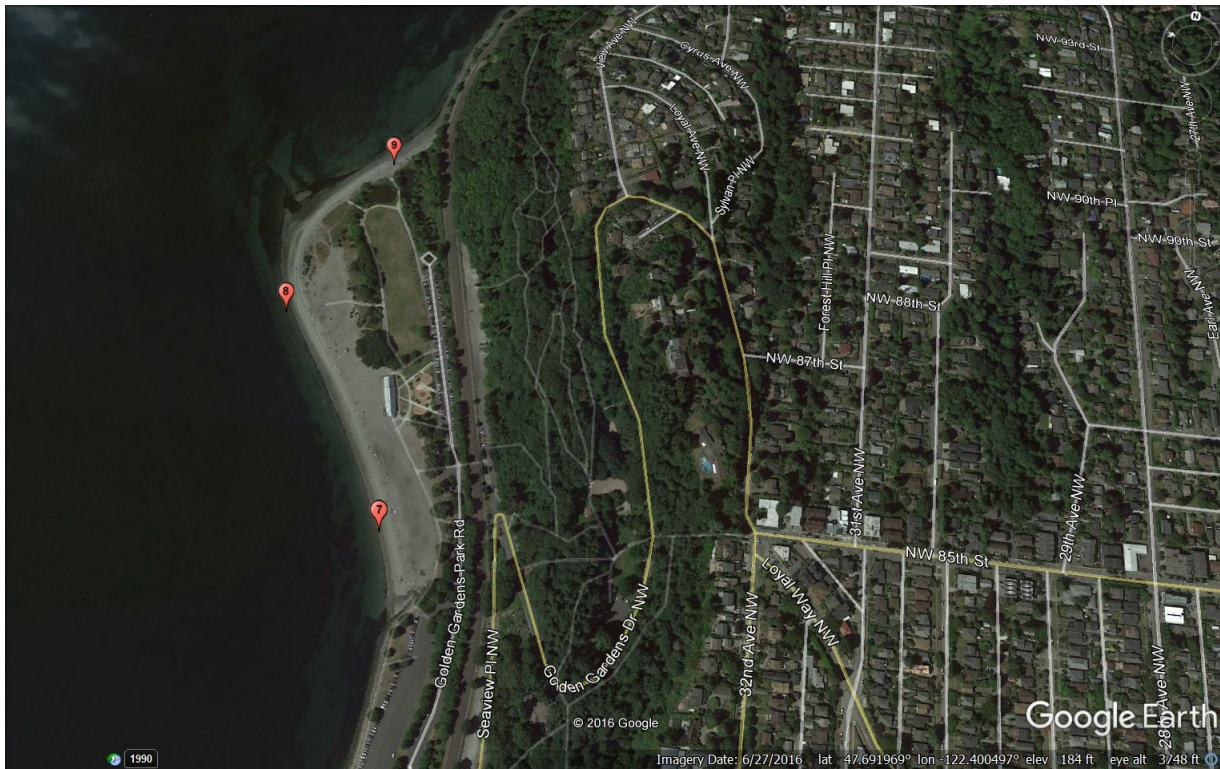


King County

Department of Natural Resources and Parks
Wastewater Treatment Division

WEST POINT TREATMENT PLANT BYPASS

FEBRUARY 17, 2017



Above, Golden Gardens Park. Below, Carkeek Park. Both are north of West Point Treatment Plant. Sampling sites are identified on the map.





King County

Department of Natural Resources and Parks
Wastewater Treatment Division

**WEST POINT TREATMENT
PLANT BYPASS**
FEBRUARY 17, 2017

ALTERNATIVE FORMATS AVAILABLE
206-684-1235 / 711 (TTY Relay)

Data for WP EBO - Events 1 and (2 and 3)			Fecal Coliform Washington State Criteria is 200 CFU/100ml	Enterococcus Department of Health (and EPA) Criteria is 104 CFU/100ml	
Sample	Collect Date	Salt Water Locations	Fecal Coliforms [CFU/100ml]	Enterococcus [CFU/100ml]	Status as of 2.17.17
L67075-5	2/9/2017 10:49	Map point (5) West Point Beach North Side - Midpoint between (4) and (6)	20000	12000	Signs still up. EBO discharged twice on 2.15.17. Samples taken on 2.15.17, 2.16.17, and 2.17.17.
L67078-5	2/10/2017 9:37		73	99	
L67079-5	2/11/2017 8:42		32	23	
L67080-5	2/12/2017 9:12		5	11	
L67095-5	2/13/2017 8:17		13	30	
L67121-5	2/14/2017 9:41		2	7	
L67134-5	2/15/2017 8:28	[Events 2]	22	63	
L67139-5	2/16/2017 8:50	[Event 3]	110	Pending	
L67075-6	2/9/2017 10:53	Map point (6) West Point Beach North Side - East End of Beach	13000	12000	Signs still up. EBO discharged twice on 2.15.17. Samples taken on 2.15.17, 2.16.17, and 2.17.17.
L67078-6	2/10/2017 9:41		190	120	
L67079-6	2/11/2017 8:45		48	41	
L67080-6	2/12/2017 9:15		1	5	
L67095-6	2/13/2017 8:22		19	42	
L67121-6	2/14/2017 9:45		3	6	
L67134-6	2/15/2017 8:32	[Events 2]	23	200	
L67139-6	2/16/2017 8:54	[Event 3]	72	Pending	
L67075-7	2/9/2017 10:28	Map point (7) Golden Gardens - South End of Beach	90	270	Not sampled on 2.14.17.
L67078-7	2/10/2017 10:32		99	73	
L67079-7	2/11/2017 9:16		29	44	
L67080-7	2/12/2017 10:05		10	10	
L67095-7	2/13/2017 9:04		<MDL (1)	5	
L67134-7	2/15/2017 9:05	[Events 2]	32	17	Signs are now up again as a result of Events 2 and 3.
L67139-7	2/16/2017 7:47	[Event 3]	44	Pending	

Data for WP EBO - Events 1 and (2 and 3)			Fecal Coliform Washington State Criteria is 200 CFU/100ml	Enterococcus Department of Health (and EPA) Criteria is 104 CFU/100ml	
Sample	Collect Date	Salt Water Locations	Fecal Coliforms [CFU/100ml]	Enterococcus [CFU/100ml]	Status as of 2.17.17
L67075-8	2/9/2017 10:34	Map point (8) Golden Gardens - Middle of Beach in front of Bath House	120	180	Not sampled on 2.14.17.
L67078-8	2/10/2017 10:40		110	140	
L67079-8	2/11/2017 9:21		50	32	
L67080-8	2/12/2017 10:09		5	1	
L67095-8	2/13/2017 9:10		3	4	
L67134-8	2/15/2017 9:08	[Events 2]	32	17	Signs are now up again as a result of Events 2 and 3.
L67139-8	2/16/2017 7:50	[Event 3]	72	Pending	
L67075-9	2/9/2017 10:43	Map point (9) Golden Gardens - North End of Beach	70	1400	Not sampled on 2.14.17.
L67078-9	2/10/2017 10:46		71	120	
L67079-9	2/11/2017 9:26		5	18	
L67080-9	2/12/2017 10:14		<MDL (1)	5	
L67095-9	2/13/2017 9:15		4	5	
L67134-9	2/15/2017 9:11	[Events 2]	12	19	Signs are now up again as a result of Events 2 and 3.
L67139-9	2/16/2017 7:58	[Event 3]	20	Pending	
L67075-10	2/9/2017 11:15	Map point (10) Carkeek Park - South End of Beach	1300	7000	Not sampled on 2.14.17.
L67078-10	2/10/2017 11:36		42	90	
L67079-10	2/11/2017 9:55		14	23	
L67080-10	2/12/2017 10:52		5	6	
L67095-10	2/13/2017 9:54		2	5	
L67134-10	2/15/2017 9:40	[Events 2]	15	140	No signs are posted, however we now have a high hit of enterococcus of 140 on 2.15.17.
L67139-10	2/16/2017 7:09	[Event 3]	100	Pending	

Data for WP EBO - Events 1 and (2 and 3)			Fecal Coliform Washington State Criteria is 200 CFU/100ml	Enterococcus Department of Health (and EPA) Criteria is 104 CFU/100ml	
Sample	Collect Date	Salt Water Locations	Fecal Coliforms [CFU/100ml]	Enterococcus [CFU/100ml]	Status as of 2.17.17
L67075-11	2/9/2017 11:12	Map point (11) Carkeek Park - Mid Beach - Close to mouth of Piper's Creek	900	<MDL (900)	Not sampled on 2.14.17.
L67078-11	2/10/2017 11:41		28	27	
L67079-11	2/11/2017 10:00		14	23	
L67080-11	2/12/2017 10:56		2	3	
L67095-11	2/13/2017 9:57		<MDL (1)	1	
L67134-11	2/15/2017 9:42	[Events 2]	5	63	No signs are posted.
L67139-11	2/16/2017 7:12	[Event 3]	47	Pending	
L67075-12	2/9/2017 11:09	Map point (12) Carkeek Park - North End of Beach	3	2	Not sampled on 2.14.17.
L67078-12	2/10/2017 11:45		29	27	
L67079-12	2/11/2017 10:05		13	13	
L67080-12	2/12/2017 11:00		4	3	
L67095-12	2/13/2017 10:00		1	2	
L67134-12	2/15/2017 9:45	[Events 2]	14	28	No signs are posted.
L67139-12	2/16/2017 7:16	[Event 3]	21	Pending	

Red values with pink cells indicate an exceedance of the criteria listed above.

CFU = Colony Forming Units

Event 2 = EBO Discharge approximately 8 a.m to 11 a.m. the morning of 2.15.17

Event 3 = EBO discharge approximately 2 p.m. to 5 a.m. on 2.15.17 to 2.16.17