



King County

Department of Natural Resources and Parks
Wastewater Treatment Division

**WEST POINT TREATMENT
PLANT BYPASS**
FEBRUARY 10, 2017

Water Quality Monitoring Update

King County Wastewater Treatment Division works hard to provide safe, reliable service to our region. When large storms or unanticipated equipment issues cause overflows into our waterways, we provide public notification and begin sampling and testing water quality.

King County's [Environmental Laboratory](#) conducts sampling and analysis and reports results to [Public Health-Seattle/King County](#) (PHSKC). Warning signs posted on public access areas near affected waterways remain in place until PHSKC approves removal.

Two types of bacteria determine public health risk: fecal coliform bacteria and enterococcus. Fecal coliform bacteria grow faster in a laboratory, so results from coliform analysis are available sooner.

Below you can find results from water quality sampling related to the West Point Treatment Plant Emergency Bypass conducted on February 9, 2017. An equipment failure at the time of heavy storms and high tides resulted in flooding in the plant. To protect the plant and allow crews to clean up and restore operations, incoming stormwater and wastewater were diverted through an emergency bypass to Puget Sound.

The West Point emergency bypass discharges offshore by the North Beach in Discovery Park. Currents travel north from this point.

You can find more information about water quality monitoring in recreational beach areas at the Washington Department of Ecology [beach program web page](#).

For more information:

Visit King County Wastewater Treatment Division on the Web at:
<http://www.kingcounty.gov/depts/dnrp/wtd.aspx>

For questions or concerns about this incident, contact Monica Van der Vieren at 206-477-5502 or monica.vandervieren@kingcounty.gov

ALTERNATIVE FORMATS AVAILABLE
206-477-5371 / 711 (TTY Relay)

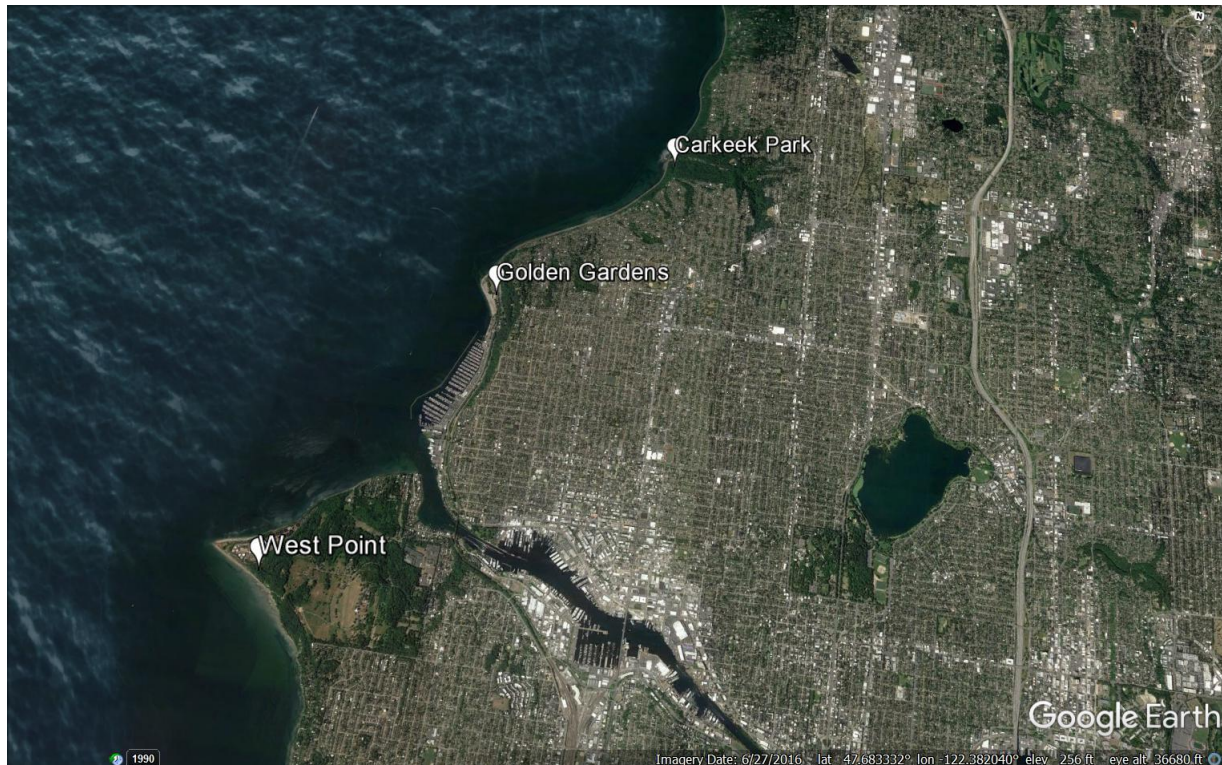


King County

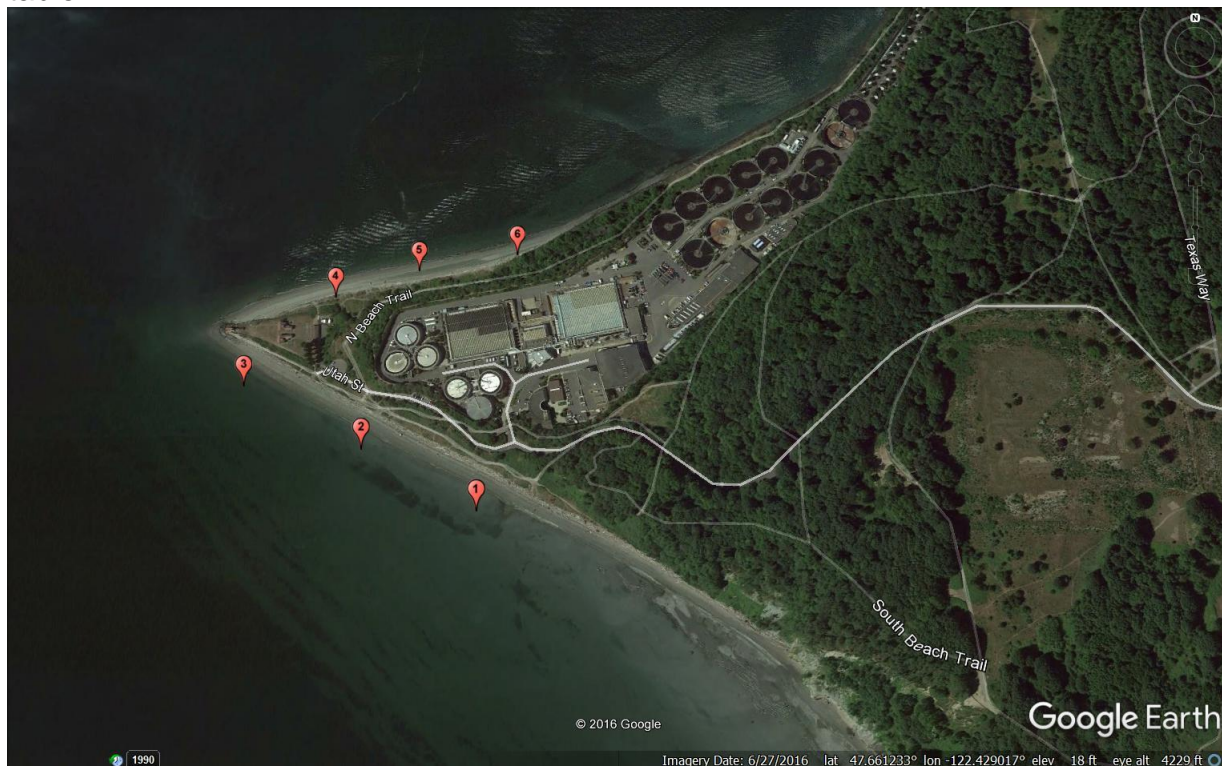
Department of Natural Resources and Parks
Wastewater Treatment Division

WEST POINT TREATMENT PLANT BYPASS

FEBRUARY 10, 2017



Above, aerial view of sampling locations associated with the West Point Treatment Plant Bypass. Below are numbered sampling sites around West Point, in Seattle's Magnolia neighborhood. The numbers on each pin correspond to a sampling site on the attached table.



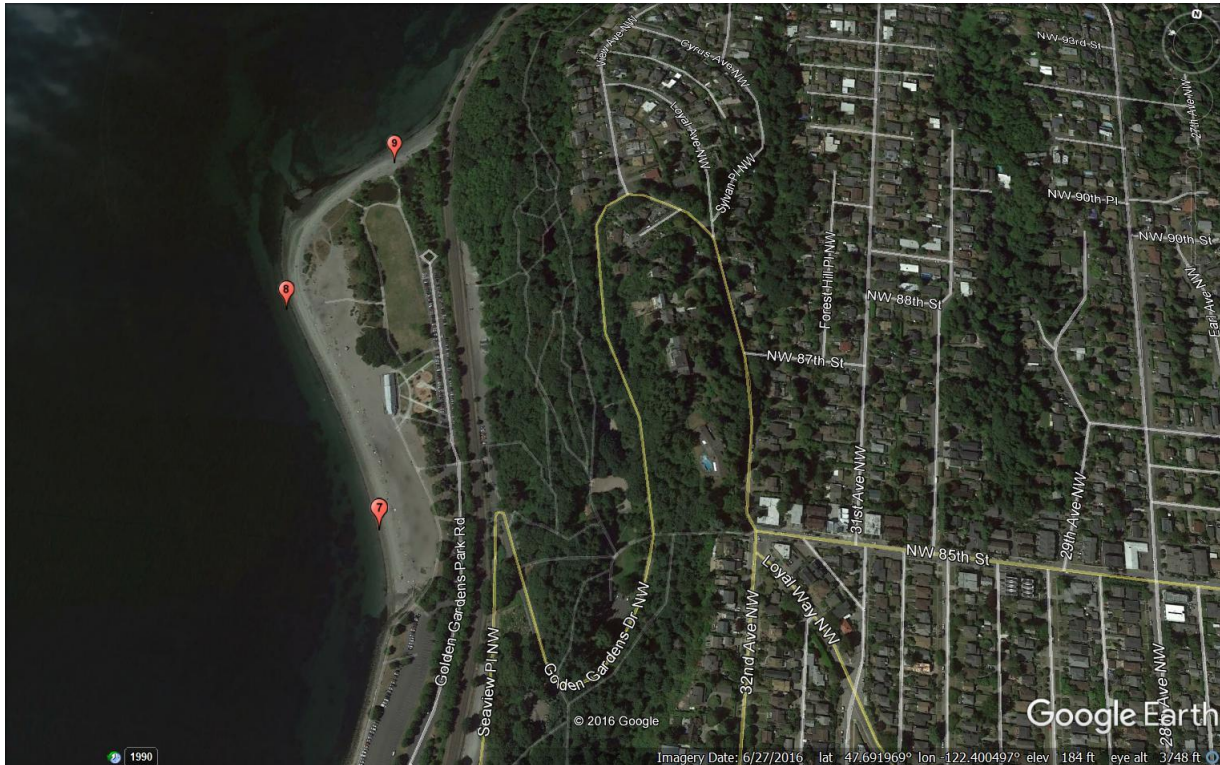


King County

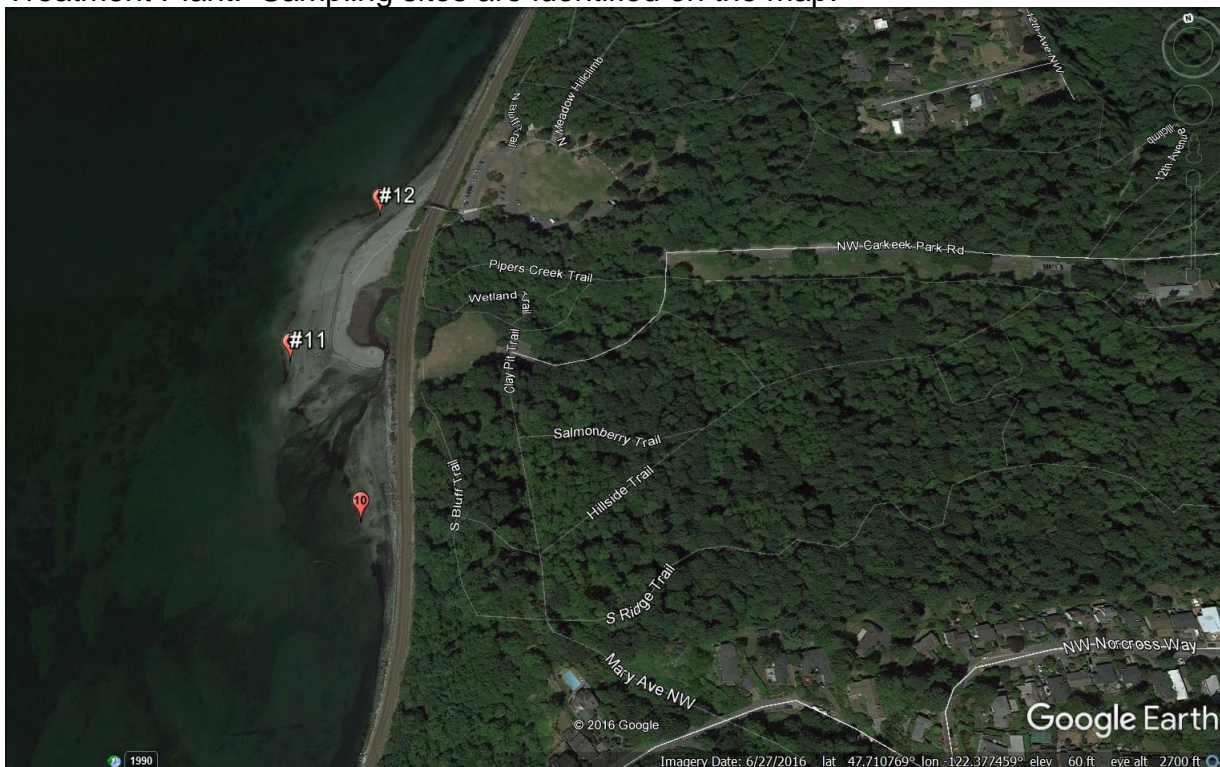
Department of Natural Resources and Parks
Wastewater Treatment Division

WEST POINT TREATMENT PLANT BYPASS

FEBRUARY 10, 2017



Above, Golden Gardens Park. Below, Carkeek Park. Both are north of West Point Treatment Plant. Sampling sites are identified on the map.





King County

Department of Natural Resources and Parks
Wastewater Treatment Division

WEST POINT TREATMENT PLANT BYPASS

FEBRUARY 10, 2017

Water quality sampling results for fecal coliform bacteria-2/09/17 West Point Treatment Plant Emergency Bypass		
Sampling Location	Site number	Bacteria level (CFU/100 ml)*
West Point- South Beach, south end	1	80
West Point- South Beach, middle	2	140
West Point- South Beach, near lighthouse	3	110
West Point- North Beach, near lighthouse	4	19000
West Point- North Beach, middle	5	20000
West Point- North Beach, farthest north	6	1300
Golden Gardens- South end	7	90
Golden Gardens- Middle	8	120
Golden Gardens-North end	9	70
Carkeek Park-South end	10	1300
Carkeek Park-Middle	11	900
Carkeek Park- North end	12	3
*Threshold level is 200 CFU/100 ml for beach closure.		

ALTERNATIVE FORMATS AVAILABLE

206-477-5371/ 711 (TTY Relay)