



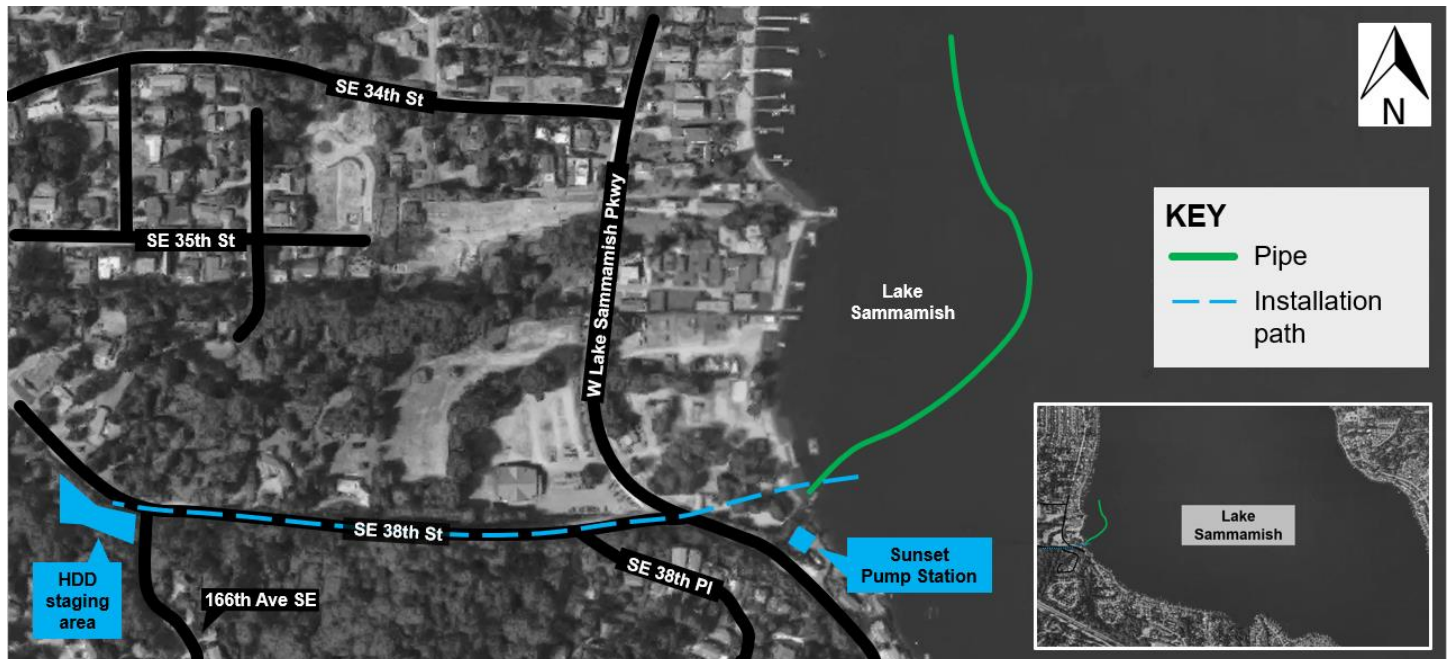
King County

Department of Natural Resources and Parks
Wastewater Treatment Division

Sunset and Heathfield Pump Stations and Force Main Upgrade

Construction Update – Dec. 6, 2017

Boater information: pipe staging activities on Lake Sammamish



Project background

Over the past several months, King County's contractor has been upgrading the Sunset and Heathfield pump stations and related sewer pipes. These structures send sewage from Sammamish, Issaquah, and Bellevue to be treated at King County's treatment plant in Renton. This project will upgrade the pump stations and the connected sewer force main pipe with additional capacity to serve the area's growing population. The project will also upgrade the underground connection structure to Eastgate Trunk near I-90.

A section of the new pipe that is part of this upgrade is currently floating on Lake Sammamish. This portion of the pipe will be installed along Southeast 38th Street via horizontal directional drilling (HDD). Crews use a machine on the surface to drill an underground pathway for the new pipe, and then pull the pipe through the new path.

Pipe background

During the design process, King County evaluated multiple methods to install the pipe and chose to install the pipe along Southeast 38th Street via HDD from Lake Sammamish to limit the environmental impact to the neighborhood. HDD is typically used to install pipelines under busy roadways and environmentally sensitive areas (such as wetlands and streams).

Like all projects involving work in and near the water, permitting for this project was complex and required approvals from numerous regulatory agencies, including the U.S. Coast Guard, U.S. Army Corps of Engineers, Washington Department of Natural Resources, Washington Department of Fish and Wildlife, and City of Bellevue.

The 1600-foot empty pipe is marked with U.S. Coast Guard-approved lights. It is held in place with eleven submerged buoy-marked anchors that the contractor maintains. The pipe's lightweight material allows it to remain afloat. Boaters are encouraged to maintain a safe distance of at least 50 feet from the pipe and limit speed to avoid collisions, and prevent any damage to boats from anchor cables.

Anticipated construction schedule

Prior to installing the pipe, crews must excavate entrance and exit pits for the pipe at the Sunset Pump Station and near the King County staging area along 164th Place Southeast and drill a pathway for the pipe between these points.

Due to limited space for staging, the pipe had to be fused and floated on Lake Sammamish ahead of time before crews could mobilize equipment to drill an underground pathway and install the floating pipe. Crews plan to install the pipe in February 2018.

The underwater anchors will remain in place through summer 2018. Removing the anchors during the summer will minimize impacts to salmon and other fish.

What to Expect:

- Work near Vasa Park and the Sunset Pump Station on weekdays from 7 a.m. to 5 p.m. and weekends from 7 a.m. to 7 p.m.
- Equipment, dust and noise close to the work areas
- The fused pipe to float on Lake Sammamish until it is installed in February 2018
- The submerged anchors to remain in Lake Sammamish until summer 2018

We will continue to send updates as work progresses and encourage you to sign up for email updates on the project website (www.kingcounty.gov/sunsetheathfield) for the most up-to-date information. If you have questions or concerns, please call our project hotline at **206-296-7800** or email desean.quinn@kingcounty.gov.



Sign up for email updates!

To stay informed, sign up for email construction updates at kingcounty.gov/sunsetheathfield.

For more information

- Visit www.kingcounty.gov/sunsetheathfield
- Call the project hotline at **206-296-7800**
- Email De'Sean Quinn at desean.quinn@kingcounty.gov

The schedule and duration for construction is tentative and is subject to change as work progresses. We will continue to provide email notices with updates on timing of specific construction activities.

Alternative Formats Available
206-477-5371 TTY Relay: 711