



King County

Protecting Our Waters

Doing our part on rainy days

Rainier Valley Wet Weather Storage Project



Southeast District Council

September 24, 2014



How older sewer systems keep waste away

In older cities, one pipe carries both sewage and stormwater

- Normally not a problem

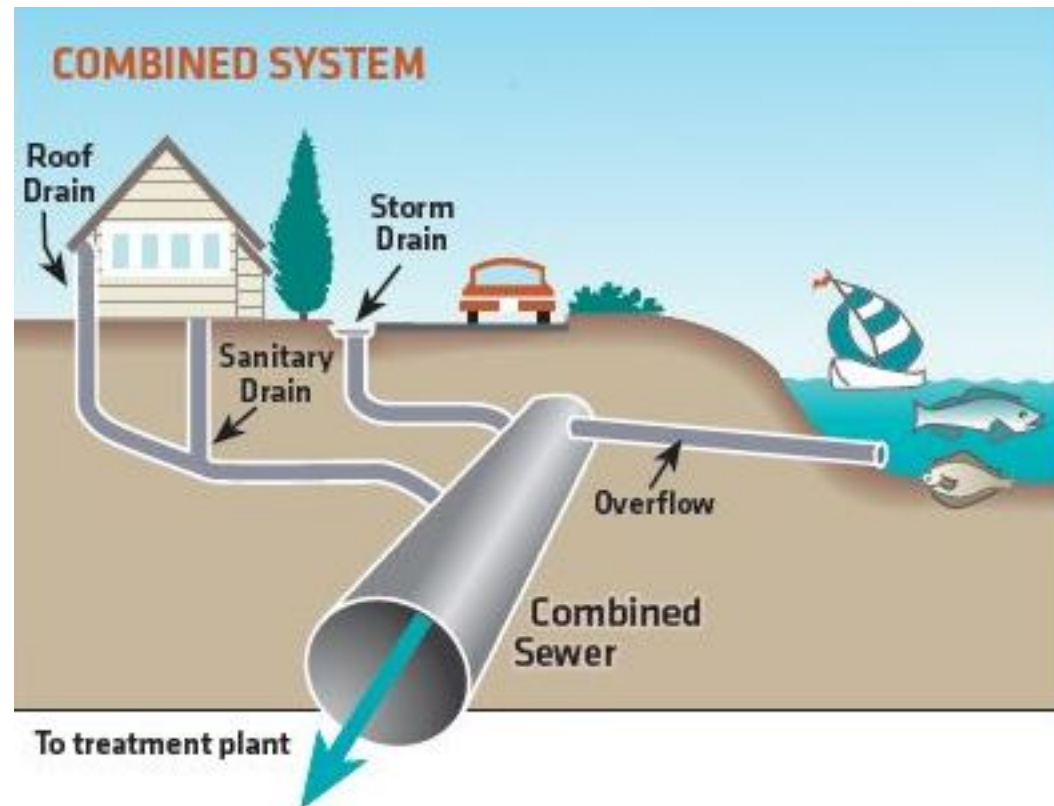
During storms excess polluted water goes to Seattle water bodies.

- Known as “Combined Sewer Overflows” or “CSOs”

Important safety valves

- Prevent exposure to sewage
- Contain harmful chemicals, microbes

Must be controlled by state, federal law





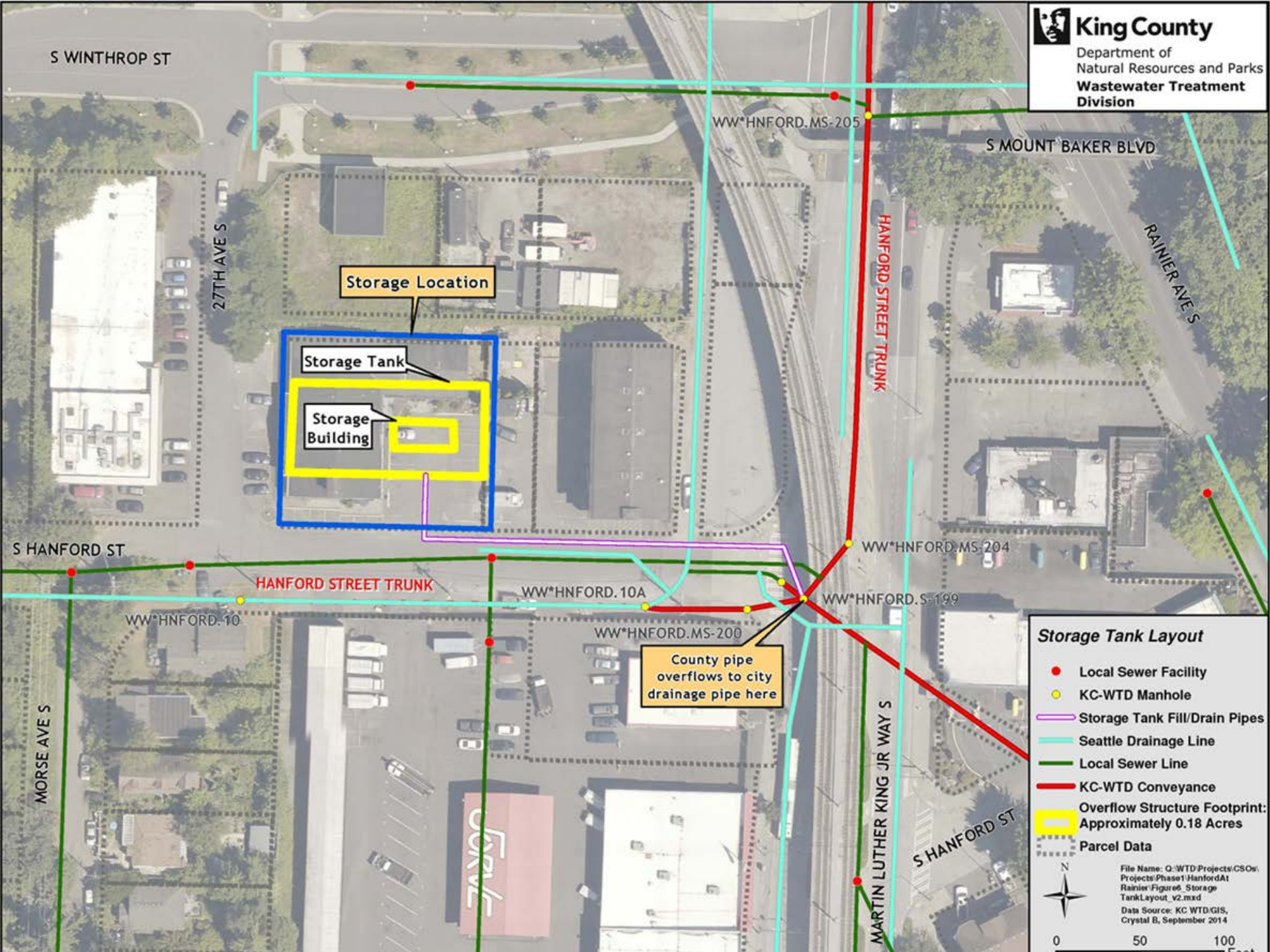
King County

Protecting Our Waters

Doing our part on rainy days

Underground storage tank





Storage Location

Storage Tank

Storage Building

HANFORD STREET TRUNK

County pipe
 overflows to city
 drainage pipe here

Storage Tank Layout

- Local Sewer Facility
- KC-WTD Manhole
- Storage Tank Fill/Drain Pipes
- Seattle Drainage Line
- Local Sewer Line
- KC-WTD Conveyance
- Overflow Structure Footprint:
 Approximately 0.18 Acres
- Parcel Data



File Name: Q:\WTD\Projects\CSOs:
 Project\Phase1\HanfordAt
 Rainier\Figure6. Storage
 TankLayout_v2.mxd
 Data Source: KC WTD\GIS,
 Crystal 8, September 2014

0 50 100 Feet



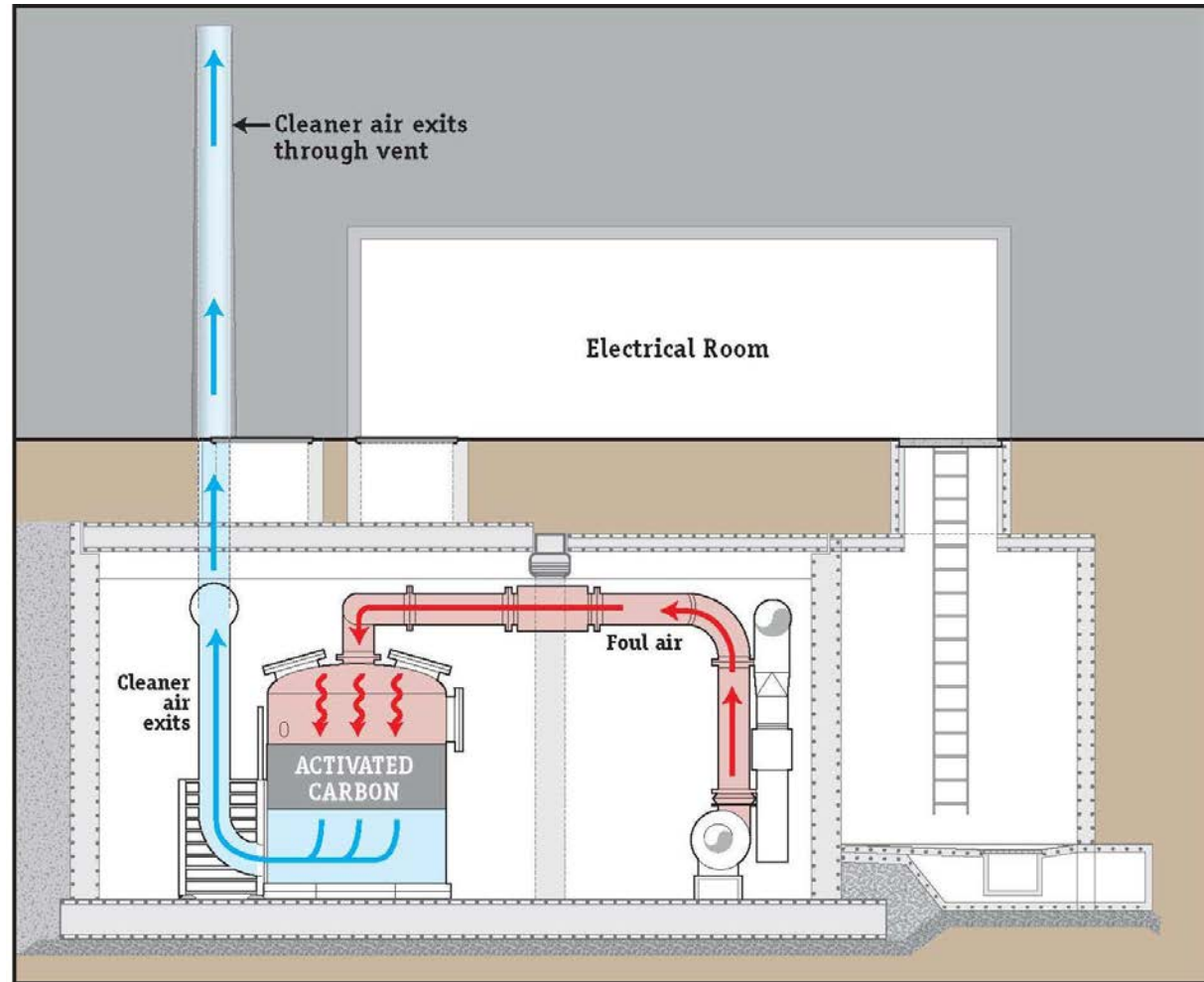
Controlling Odors

Pipe has had no problems historically

90% stormwater

Negative pressure

Activated carbon



Activated Carbon Scrubber – Cross Section



What we've heard

- Support re-development
- Avoid disruptions to businesses/traffic
- Encourage walkability
- Protect public safety/site security
- Promote open space
- Seek out educational opportunities
- Incorporate art



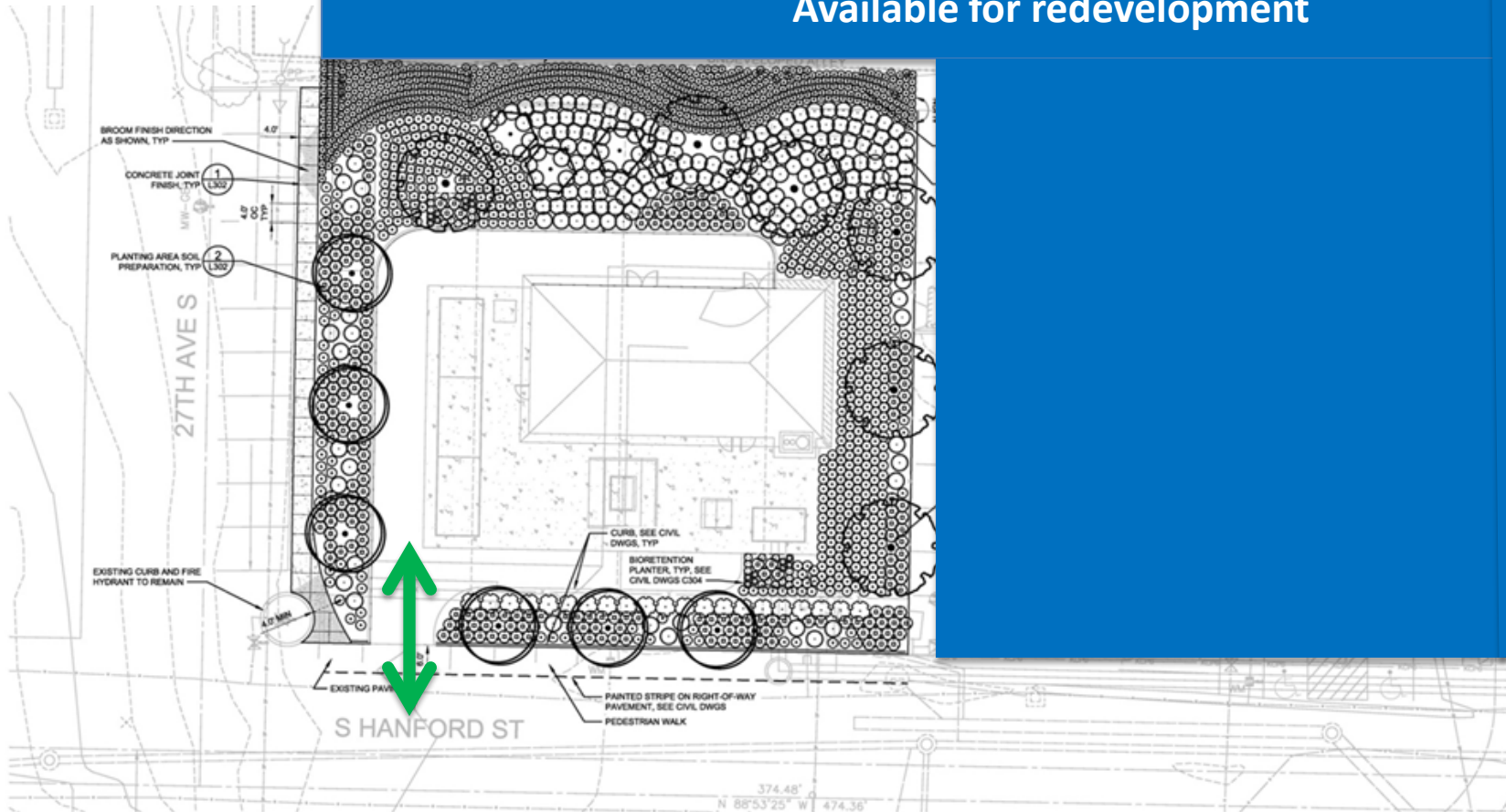
King County

Protecting Our Waters

Doing our part on rainy days

Proposed design (July 2013)

Available for redevelopment



NOTE:
1. SEE SHEET L103 FOR LANDSCAPE LEGEND,
ABBREVIATIONS, NOTES, AND PLANTING SCHEDULE.



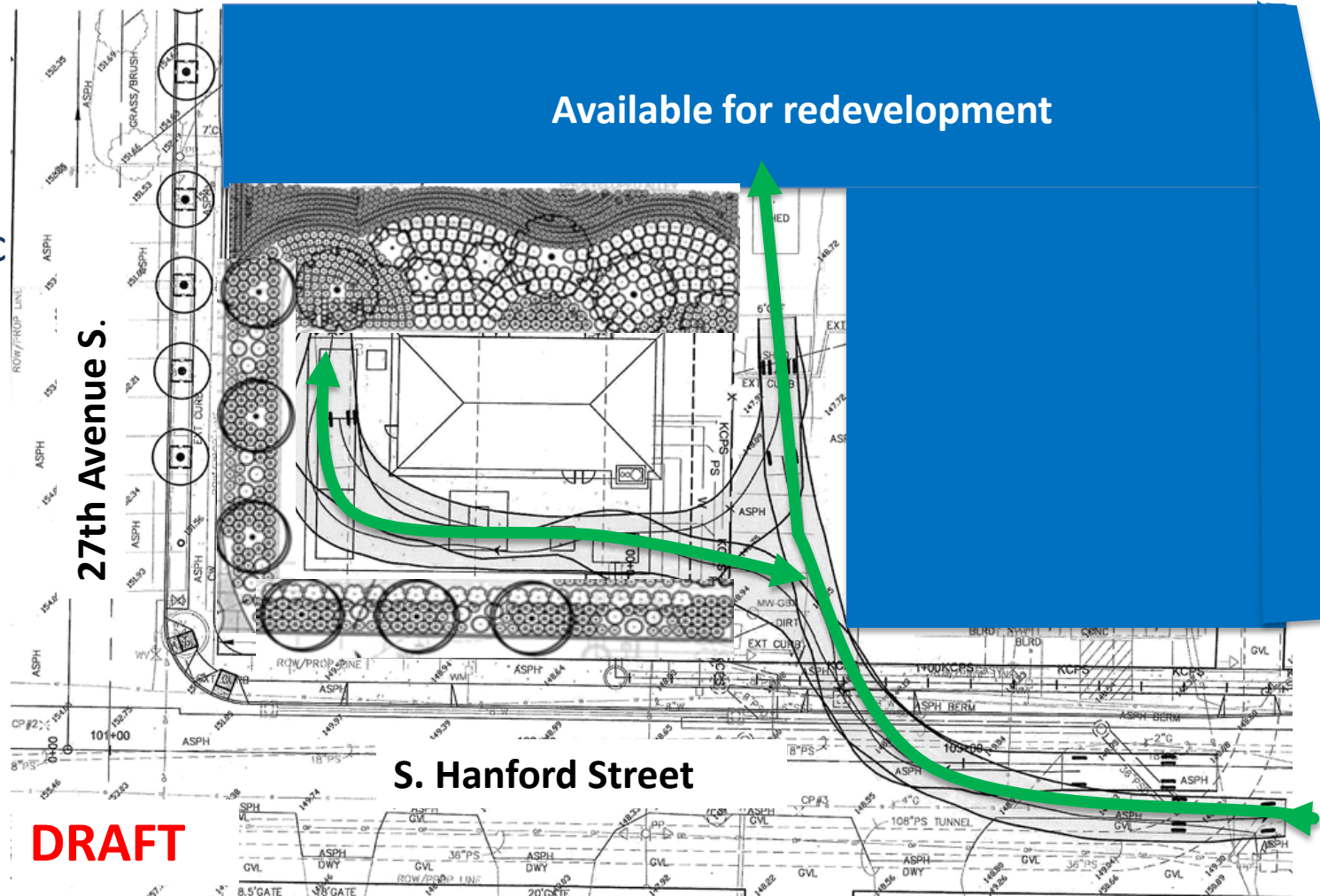
King County

Protecting Our Waters

Doing our part on rainy days

Revised design (August 2014)

- New access to nearby parcels
- Better traffic flow
- Fence
- New sidewalks
- New planters, trees





King County

Protecting Our Waters

Doing our part on rainy days

New storage tank at S. Hanford St.





King County

Protecting Our Waters

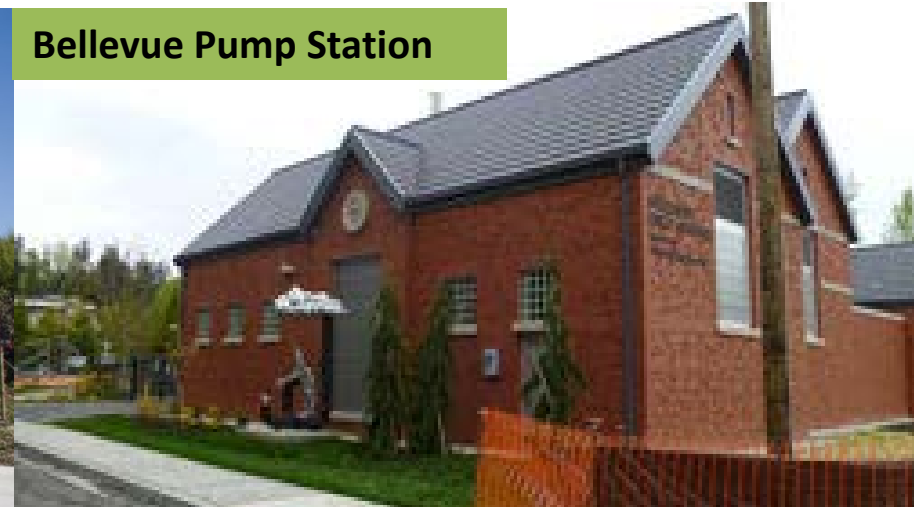
Doing our part on rainy days

King County facilities in developed areas

Juanita Bay Pump Station in north Kirkland



Bellevue Pump Station



Kirkland Pump Station next to Transit Center



Dexter Regulator at South Lake Union



King County

Protecting Our Waters

Doing our part on rainy days

THANK YOU!

For more information

Contact Doug Marsano

p) 206-477-5549

e) doug.marsano@kingcounty.gov

Search “Rainier Tank” at kingcounty.gov