

## Sewer Pipeline Work in Pacific, Algona & Auburn

Phase B of the Kent-Auburn Conveyance System Improvements Project

# STAYING INFORMED ABOUT CONSTRUCTION



### For Construction Updates:

During construction, King County will periodically send email updates, mail newsletters, and distribute flyers door-to-door.

#### To make sure you receive the latest information:

- Sign up: for project **email updates** at the sign-in table or online
- Visit us on the Web: [www.kingcounty.gov/kent-auburn-csi](http://www.kingcounty.gov/kent-auburn-csi)
- Look: for **newsletters in the mail** and **project updates by email**.

### For Questions or Concerns:

You can always reach the King County Community Relations team:

- Construction Information Line: **206-205-9283**
- Email: [David.Freed@kingcounty.gov](mailto:David.Freed@kingcounty.gov)

*Podemos traducir la información del proyecto al español. Solo pregunta. (We can translate project information into Spanish. Just ask.)*

@KingCountyWTD



## Sewer Pipeline Work in Pacific, Algona & Auburn

Phase B of the Kent-Auburn Conveyance System Improvements Project

# PROJECT OVERVIEW

Since 2008, King County Wastewater Treatment Division has been working to improve the wastewater system in southeast King County. In 2014, the County completed two new pipelines in Kent and Auburn. Now, we are gearing up to construct the second phase of the project, building a new sewer line in Pacific, Algona, and Auburn.

### Why is King County Making These Improvements?

- To protect public health and the environment
- To continue to provide safe, reliable sewer service as the area grows
- To provide enough capacity to transport wastewater through 2060

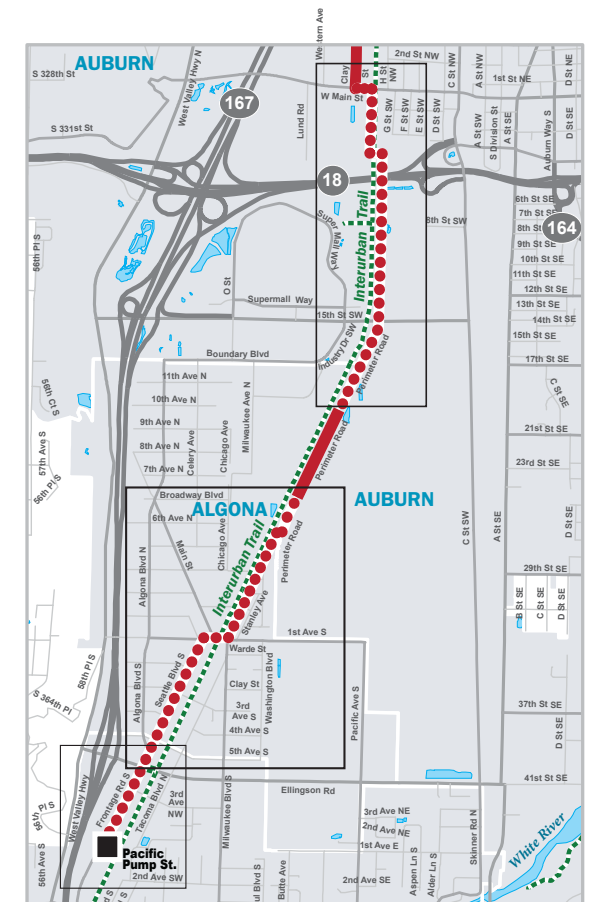
### Project Schedule:

- Construction is expected to start in Early 2017 and go on for two years.
- We do not yet know when work will take place in Algona – sign up for updates and we'll keep you informed about the project schedule and activities!

#### Sign up for project updates!

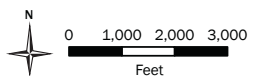
Stay informed. Keep up to date about construction activities.

- Construction Information Line: **206-205-9283**
- Email: [David.Freed@kingcounty.gov](mailto:David.Freed@kingcounty.gov)



#### 2017-18 Project Area

- • • • • New Sewerline
- Existing Sewerline



@KingCountyWTD



## Sewer Pipeline Work in Pacific, Algona & Auburn

Phase B of the Kent-Auburn Conveyance System Improvements Project

# A NEW SEWER LINE IN ALGONA

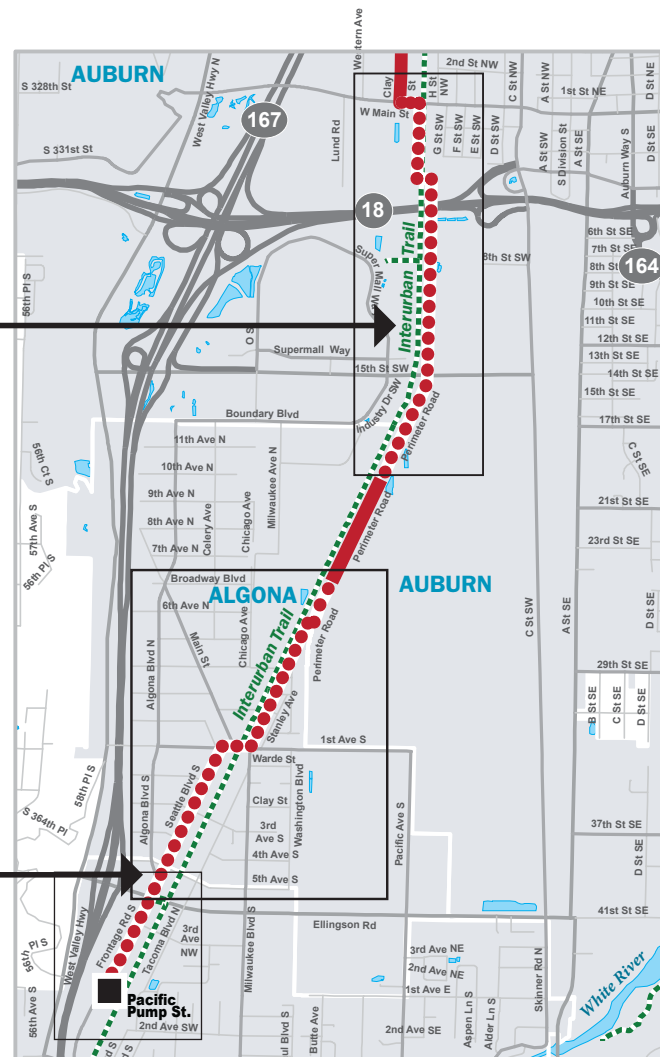
- The new sewer line runs through Auburn, Algona, and Pacific.
- Work in Algona will be next to parts of the Interurban Trail, 1st Avenue North, and Seattle Boulevard South.
- We expect it will take up to 20 months to complete the work in Algona. Once a contractor is on board we'll have a better idea about work duration and schedule.

### Work next to the Interurban Trail

Some work in this area will be on people's properties or along their fence line. We have talked to the owners and residents here about our work.

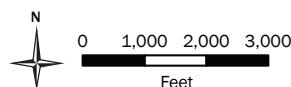
### Work along Seattle Boulevard and First Avenue will be in the street.

King County will widen the paving on parts of Seattle Boulevard. As a result, some mailboxes and sign posts will need to be moved.



### 2017-18 Project Area

- New Sewerline
- Existing Sewerline



@KingCountyWTD



### Sign up for project updates!

Stay informed. Keep up to date about construction activities.

- Construction Information Line: **206-205-9283**

- Email: [David.Freed@kingcounty.gov](mailto:David.Freed@kingcounty.gov)



## Sewer Pipeline Work in Pacific, Algona & Auburn

Phase B of the Kent-Auburn Conveyance System Improvements Project

# PROJECT DETAILS

The entire project includes 5,000 feet of new sewer line in Algona.

Open cut ("cut and cover") construction will be used to build almost half of the the pipeline.

Multiple crews may be working at the same time in different locations.

## Main work activities



**Staging/setup:** contractor will be setting up work areas.



**Open cut (trenched) pipeline construction:** a section of pipe is placed in a trench, then covered, before moving on to the next pipe section.



**Dewatering:** installing a series of wells and pipes along the pipeline route so that groundwater can be temporarily removed. This allows the soils to be stable enough to install the pipeline.



**Traffic impacts:** King County will work with the contractor to provide access for businesses and homes. There will be some modifications, detours, and street closures.



As the project works along Seattle Blvd. South, there may be street closures, traffic detours, and impacts to access.



In some cases, trails and sidewalks will need to be closed. The contractor will provide detours where needed.

Fencing, signs and flaggers may be used.

@KingCountyWTD

