



King County

Department of Natural Resources and Parks
Wastewater Treatment Division

Kent-Auburn Conveyance System Upgrades Stuck River Trunk / Kent East Hill Diversion

King County Sewer Projects in Auburn and Kent Delayed Until 2012

To protect public health and the environment, King County conveys and treats wastewater from 17 cities and 17 local sewer districts including the City of Kent and the City of Auburn. Local sewer systems transport wastewater from residences and businesses in Kent and Auburn to King County's conveyance system for treatment at the county's treatment plant in Renton.

To meet population growth in Kent and Auburn, King County has designed two new pipeline projects – the Stuck River Trunk and Kent East Hill Diversion projects (*see reverse for project site maps*). These pipelines will provide additional wastewater capacity to meet the area's needs through 2050.

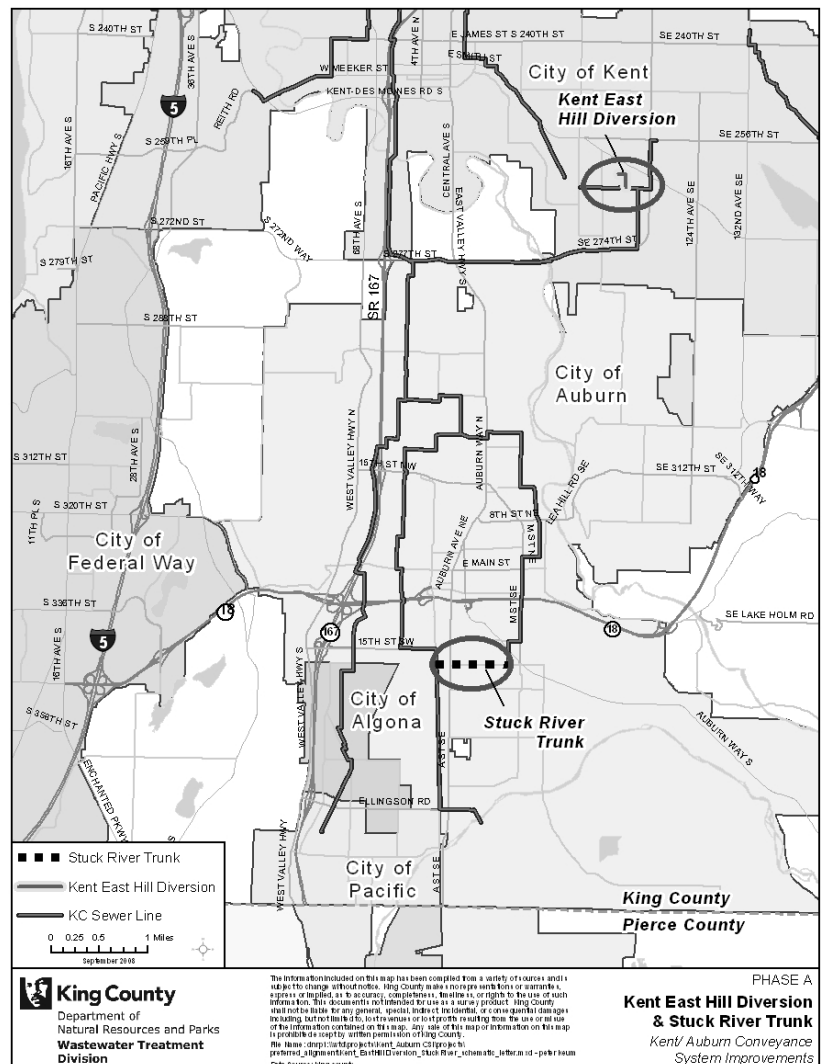
Construction of these new pipelines has been delayed due to budget constraints. Originally scheduled to begin in 2010 and completed by 2011, construction is now planned to begin in 2012 and be completed by 2013. Design on related pipeline projects in Auburn, Algona and Pacific continues at a reduced pace, with construction presently anticipated to start in 2014.

These projects remain a priority for King County, and could be resumed prior to 2012 if sufficient funds become available. King County is working closely with public works officials in Kent and Auburn to ensure reliable wastewater treatment and conveyance service continues in those communities.

For more information contact Doug Marsano at (206) 684-1235 or via email: doug.marsano@kingcounty.gov, or visit the project web page: www.kingcounty.gov/environment/wtd/Construction/South/KentAuburn

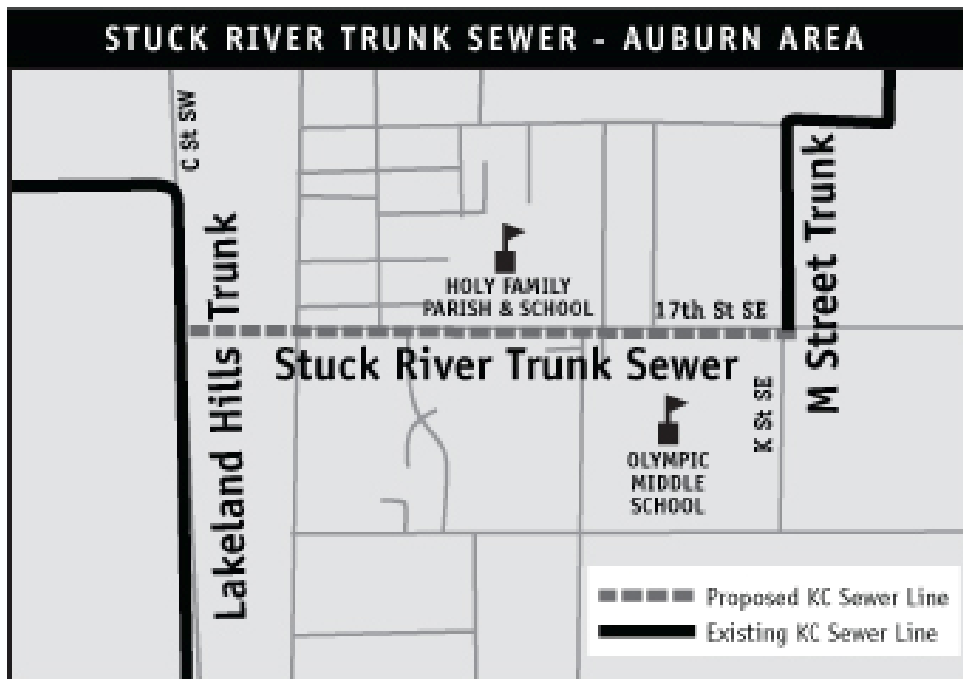
Alternate formats available by calling 206-684-1235 or TTY 711

Questions? Visit the project web page:
www.kingcounty.gov/environment/wtd/Construction/South/KentAuburn

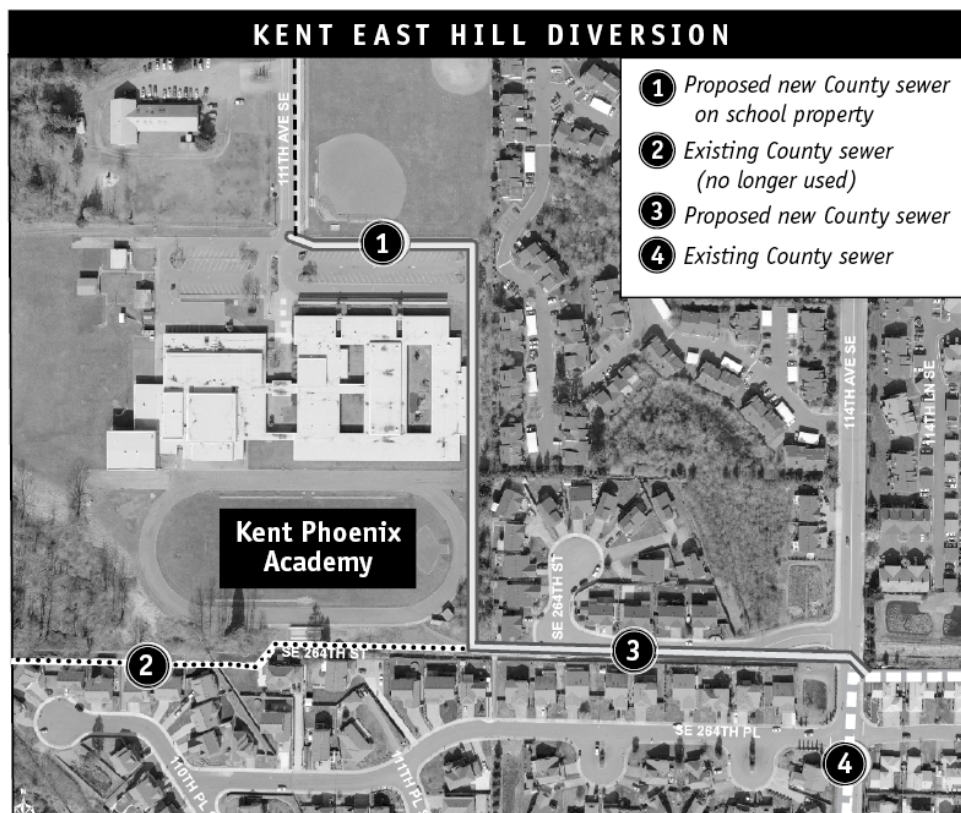




Project Site Maps



The Stuck River Trunk project will occur on 17th Street Southeast between C Street Southwest and K Street Southeast in Auburn.



The Kent East Hill Diversion project will occur near the Kent Phoenix Academy and along Southeast 264th Street between the Academy and 114th Avenue Southeast in Kent.