

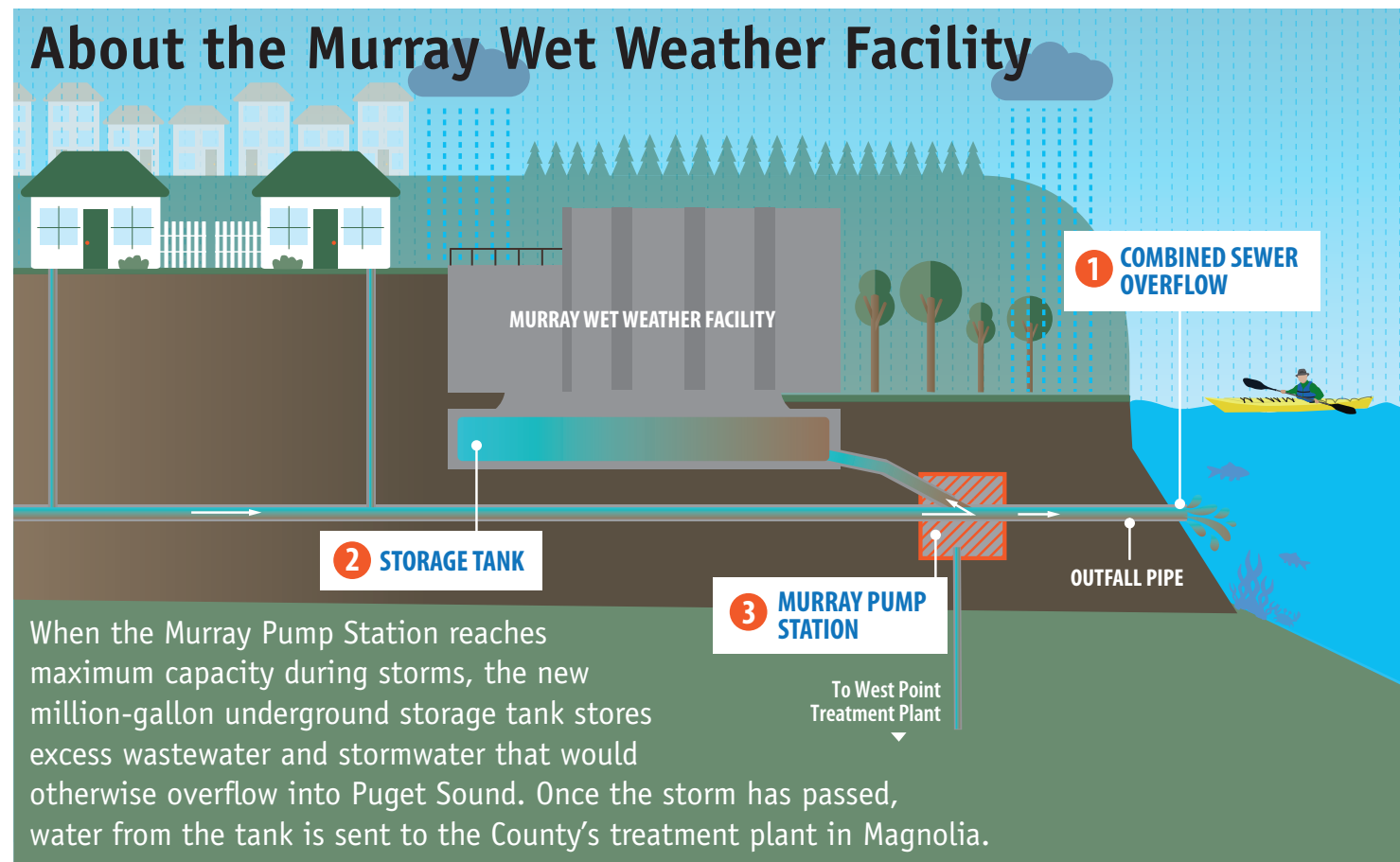
CONSTRUCTION IS DONE!

Join us on June 10 to celebrate
the completion of the project.



Alternative Formats Available
206-477-5371 (voice) or 711 (TTY)

About the Murray Wet Weather Facility



MURRAY WET WEATHER FACILITY CONSTRUCTION IS COMPLETE!

King County's contractor for the Murray CSO Control Project finished restoring the site in April. This marks the completion of the new Murray Wet Weather Facility. The public staircase connecting Beach Dr. S.W. and Lincoln Park Way S.W. is now open to the public. Temporary fencing will remain up around Lowman Beach Park until the grass is established. We expect the fence to come down this summer.

Thank you to our project neighbors

We would like to thank you for your patience during this three-year construction project. We have greatly appreciated your willingness to navigate construction concerns with us. Please be sure to fill out the [customer feedback survey](#). Your comments will help King County refine its community engagement efforts throughout our region.



The public staircase is now open!



Join us for a community celebration and facility tours

Saturday, June 10, 10 a.m. to noon
Murray Wet Weather Facility, 7018 Beach Dr. SW

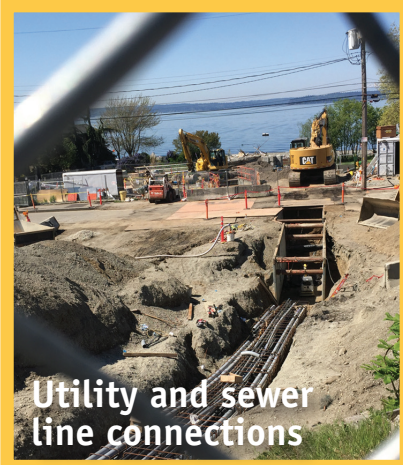
King County speakers will address the community during a short program at 10:30 a.m. We hope you'll join us to celebrate completion of the project!

To learn more about the celebration, including how to sign up for a facility tour, visit our website: kingcounty.gov/murraytank

For questions about the project or for special accommodations for the celebration, contact Kelly Foley at 206-477-8621 or kelly.foley@kingcounty.gov

A look back at the progress made

Construction at the Murray CSO Control Project site began in January 2014. The newly completed facility protects Puget Sound and public health by limiting the number of combined sewer overflow (CSO) events from the overflow pipe in Lowman Beach Park. Below is a look at site progress over the course of the construction project:



SPRING
2014

SUMMER
2014

FALL
2014

FALL
2015

SPRING
2016

SUMMER
2016

FALL
2016

SPRING
2017

CONSTRUCTION
COMPLETE

OUTREACH BY THE NUMBERS

Progress would not have been possible without the community's engagement and continued patience during project design and construction.

Here is a look at outreach for the project by the numbers:



72 project updates
and newsletters



Over 980 individual
conversations with project
area neighbors



13 door-to-door notifications



12 community meetings



11 briefings for
community groups



6 fairs and festivals