

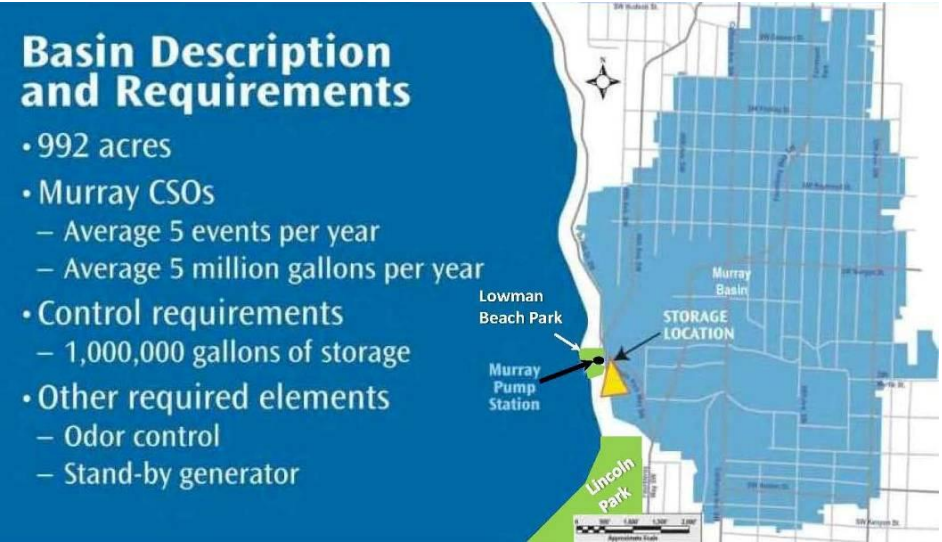
FALL 2013

What is King County building?

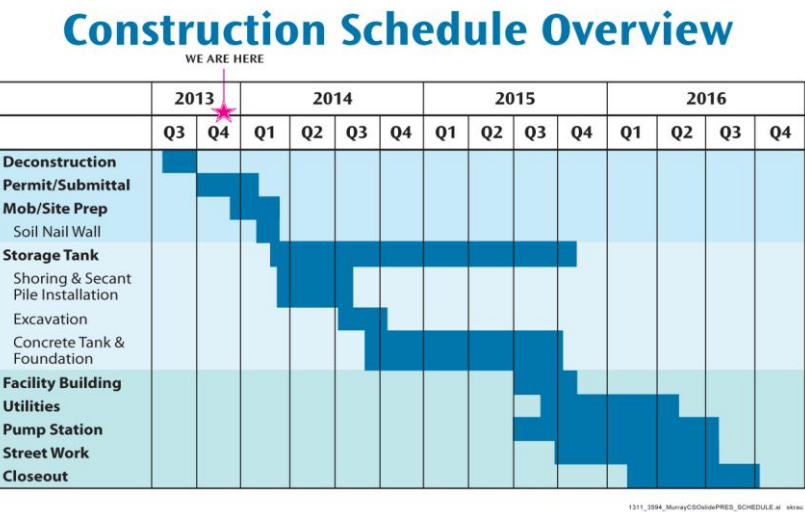
King County will build a one million gallon underground storage tank across the street from Seattle’s Lowman Beach Park. This facility will protect public health and help clean up Puget Sound by reducing discharges of untreated sewage and stormwater within the Murray Basin to Puget Sound during storms.

Protecting Public Health

Most of Seattle has one set of pipes to carry its sewage and stormwater to treatment plants. To prevent backups into homes and streets, the pipe network includes Combined Sewer Overflow pipes (CSOs) to transport excess flows directly to Seattle water bodies during storms. Although CSOs provide an important safety valve to protect public health, they contain unwanted chemicals and disease-causing pathogens.



CSOs prevent sewer backups into homes and streets during storms



Anticipated Construction Schedule

Construction will begin in December 2013 and be complete in the fall of 2016. Beach Drive Southwest will remain open for the duration of the project and access to Lowman Beach Park will be maintained at all times.



Creating a Community Asset

Lowman Beach and Lincoln Park users, community members and neighbors worked closely with the King County project team to develop a design that fit with the community. At an October 2011 design workshop community members developed the following common themes for the design to capture community values:

- Minimize “industrial facility” feel
- Encourage views of Puget Sound
- Discourage through traffic down Beach Drive
- Enhance continuous space between Lowman Beach Park and the facility

The community-based Design Advisory Group consulted with the project team for more than a year to finalize a design that adhered to the common themes by featuring:

- Public spaces offering views
- A stairway linking Lincoln Park Way SW to Beach Drive SW
- Curb bulb-outs to slow traffic near Lowman Beach Park
- A 3,500 square foot lawn
- A green roof and rain garden to capture the site’s stormwater
- New trees
- Landscaping to eventually screen the facility
- Art capturing the ecological transition from mountains to sound
- Signs explaining the facility and how it protects Puget Sound



FOR MORE INFORMATION

Contact the project hotline: 206-205-9186 / doug.marsano@kingcounty.gov

Search “Murray CSO” at kingcounty.gov