



Construction underway!

FREMONT SIPHON REPLACEMENT PROJECT • SPRING 2015

Visit the online open house!

Click the online open house link from the project website
 (www.kingcounty.gov/FremontSiphon)
 to view materials and leave your comments until April 30, 2015!



For more information:

24/7 Project Hotline: 206-205-5428

Visit www.kingcounty.gov/FremontSiphon

Email: doug.marsano@kingcounty.gov

Alternative Formats

206-477-5371 or TTY Relay: 711

Printed on recycled paper. Please recycle.

Produced by: King County IT Visual Communications & Web Group
 File name: 1502_4638_FremontSiphonNews_NO_Indicia.indd skrau



Project Newsletter

SPRING 2015

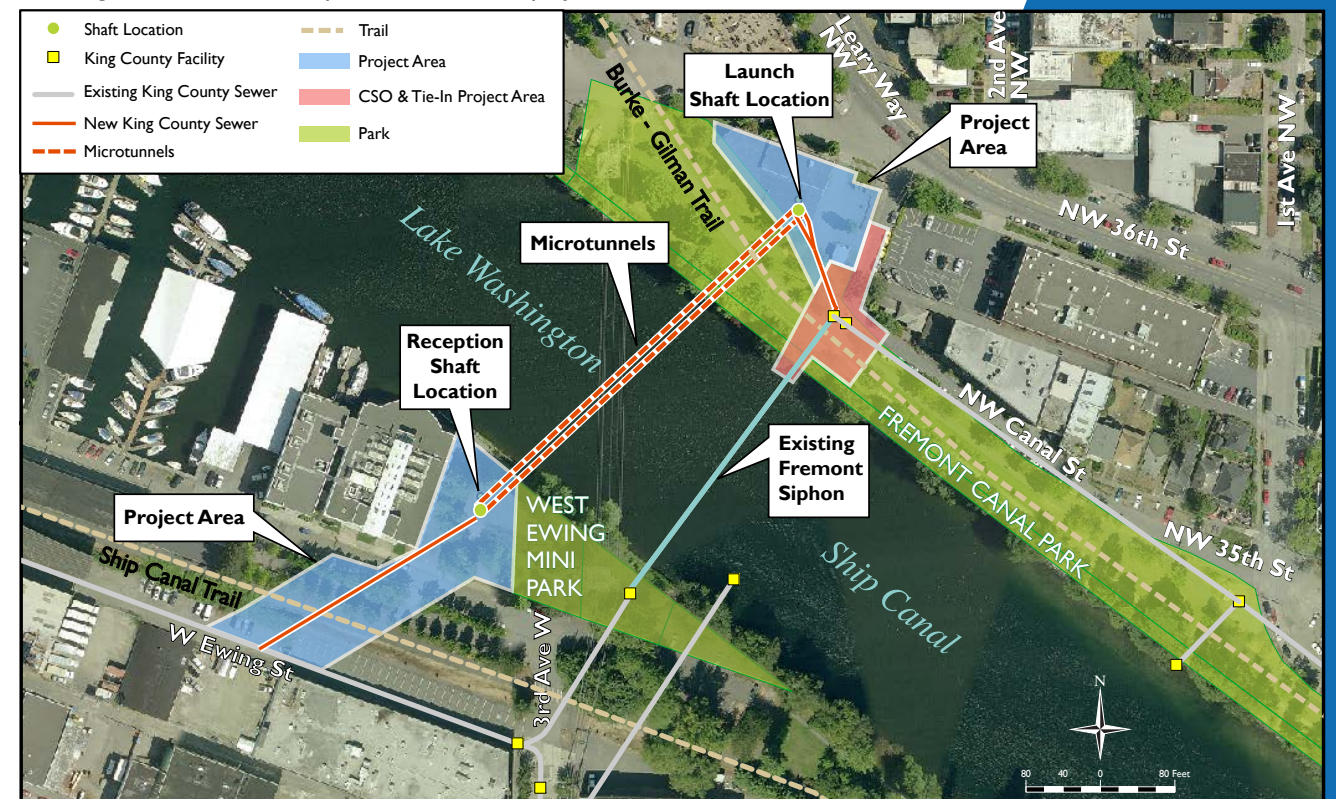
Construction starts to replace one of the region's busiest sewer pipes

In March 2015, King County and the Stellar J Corporation began construction to replace the County's Fremont Siphon sewer pipe. The Fremont Siphon is one of the region's most relied upon sewer pipes. Up to 220 million gallons of sewage and stormwater from North Seattle and elsewhere flow through the Fremont Siphon daily. Sewage and stormwater in the Fremont Siphon is cleaned and discharged at the County's treatment plant in Magnolia.

After more than 100 years of service, the Fremont Siphon needs to be replaced to maintain reliable sewer service. The existing four-foot and five-foot diameter pipes will be replaced by two new five-foot diameter pipes under the Lake Washington Ship Canal. The new siphon will run just west of the existing siphon.

Construction will run from 2015-2017. After the new siphon is built, Seattle Public Utilities (SPU) will start the 3rd Avenue West Water Main Project. This project will replace a decommissioned water main. It was scheduled to begin after the County project to minimize the impacts to the community.

Existing and new Fremont Siphon locations and project areas in Fremont and Queen Anne



A NEW WAY TO LEARN MORE!

King County is pleased to offer a new, interactive way to learn more about the Fremont Siphon project online. Community members can visit the project's online Open House at www.kingcounty.gov/FremontSiphon until April 30, 2015. Community members can use the online Open House to submit comments about project information as they review it. All comments will be documented. The project team will respond directly to any questions.

Building the new siphon

1 Prepare sites for construction • • • • • 2 Build entry and exit shafts

- Deliver equipment
- Relocate utility lines and city Combined Sewer Overflow (CSO) pipe
- Remove building at NW 36th Street and 2nd Ave NW

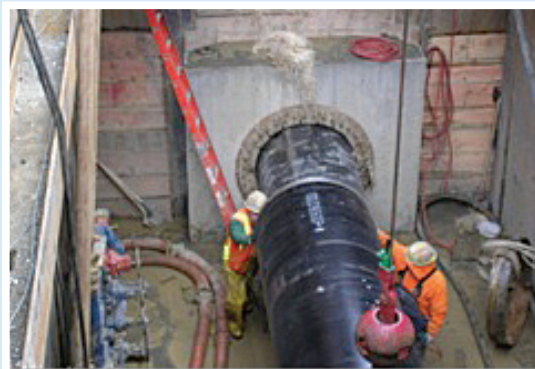


- Install a water-tight concrete ring to control groundwater and avoid settlement
- Dig out and remove material from the shaft area
- Insert microtunneling machine on the Fremont side



3 Build the new siphon • • • • • 4 Connect new siphon to existing sewer

- Tunnel under the Ship Canal from Fremont side to Queen Anne twice
- Install a 7-foot diameter steel casing in each tunnel
- Remove and recycle soil from the tunnels
- Install a five-foot diameter pipe inside each casing



- Install new pipes and vault between siphon and existing sewer



5 Build odor control facility and restore area

- Construct odor control building
- Repave roads and trail
- Replant trees
- Install public art



What to expect

- Work hours: 7:00 a.m. - 6:00 p.m. on weekdays, 9:00 a.m. - 6:00 p.m. Saturdays (as necessary)
- Increased noise, activity and truck traffic around project sites
- Temporary parking restrictions, trail detours and road closures

Queen Anne site detours*

Connecting the new siphon (2-3 months)

- Trail open
- Through traffic uses W Ewing St "alley"
- W Ewing St closed



Connecting the new siphon (4 months)

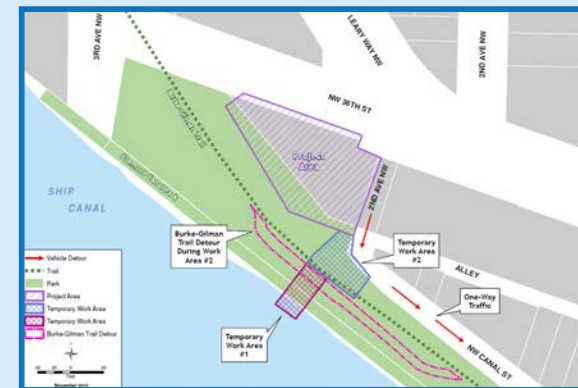
- Trail and W Ewing St "alley" closed
- Pedestrians use W Nickerson St sidewalk
- Cars and bikes use W Ewing St



Fremont site detours*

Relocating the city CSO pipe (4 months)

- Trail moved south



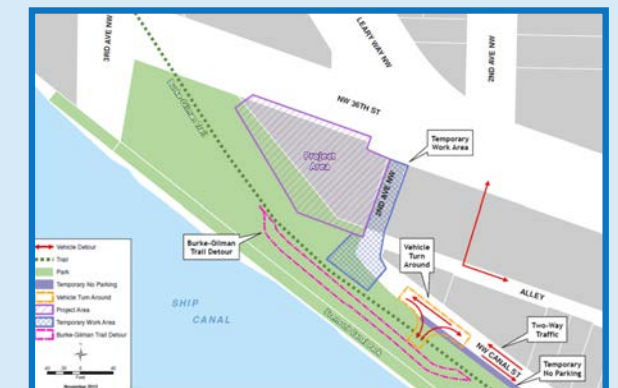
Connecting the Siphon (4 months)

- 2nd Ave NW closed
- No parking, no through traffic on NW Canal St



Relocating utilities (2 months)

- 2nd Ave NW closed
- No parking, no through traffic on NW Canal St



* King County will provide advance notice prior to all detours going into effect.