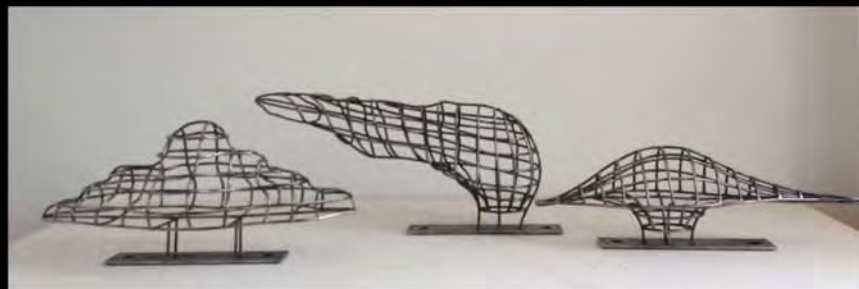
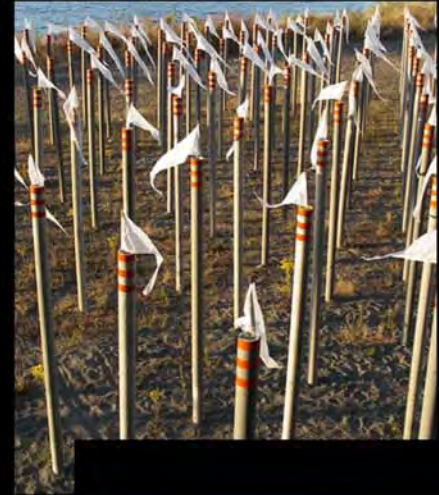


P E R R I H O W A R D



Streamline

1. To construct or design in a form that offers the least resistance to fluid flow.

2. To improve the appearance or efficiency of; modernize.

3. a. To organize. b. To simplify.

n.

1. A line that is parallel to the direction of flow of a fluid at a given instant.

2. The path of one particle in a flowing fluid.

3. A contour of a body constructed so as to offer minimum resistance to a fluid flow.

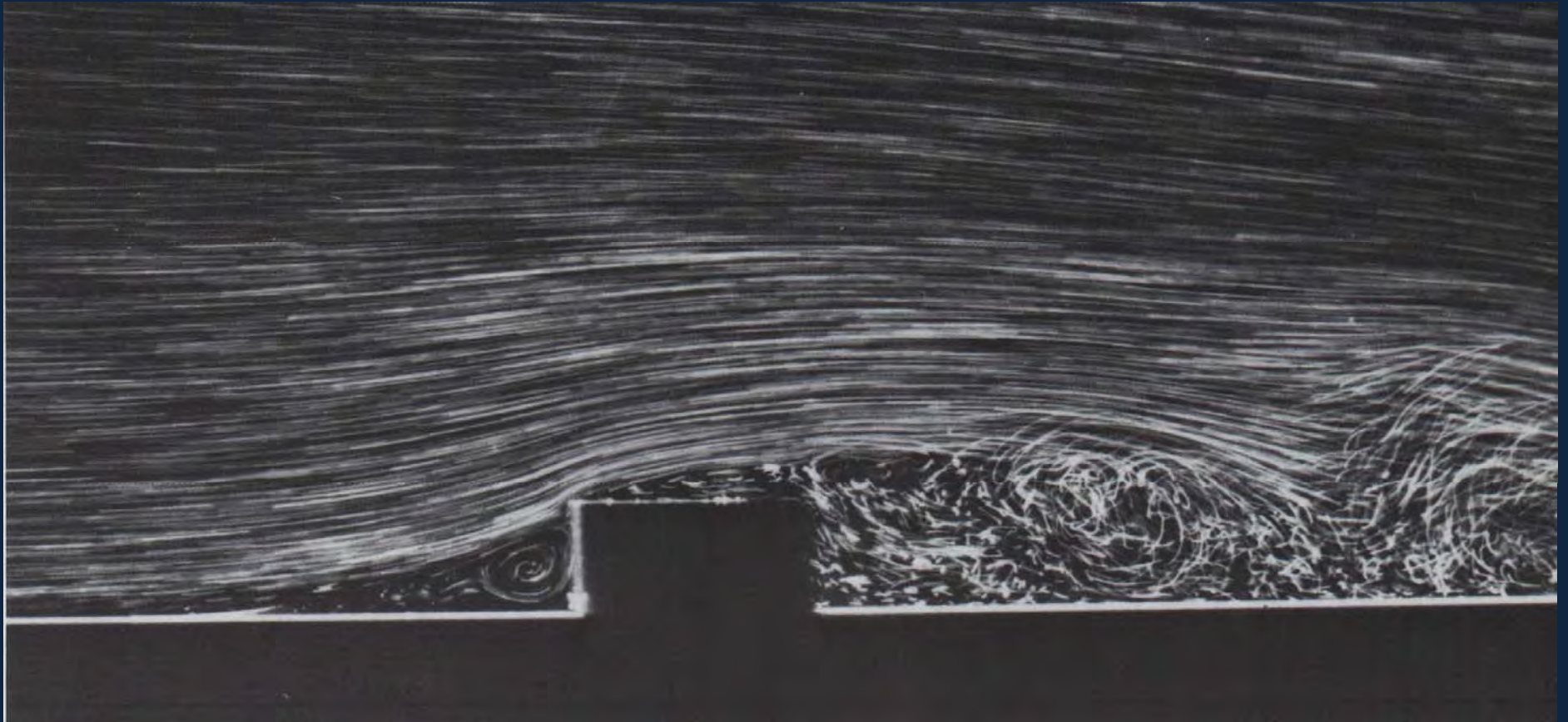
Streamline

- Inspiration through investigation
- The poetics of metrics
- Service and stewardship
- Not placeholder, but thresholding
- A delightful, yet accurate story

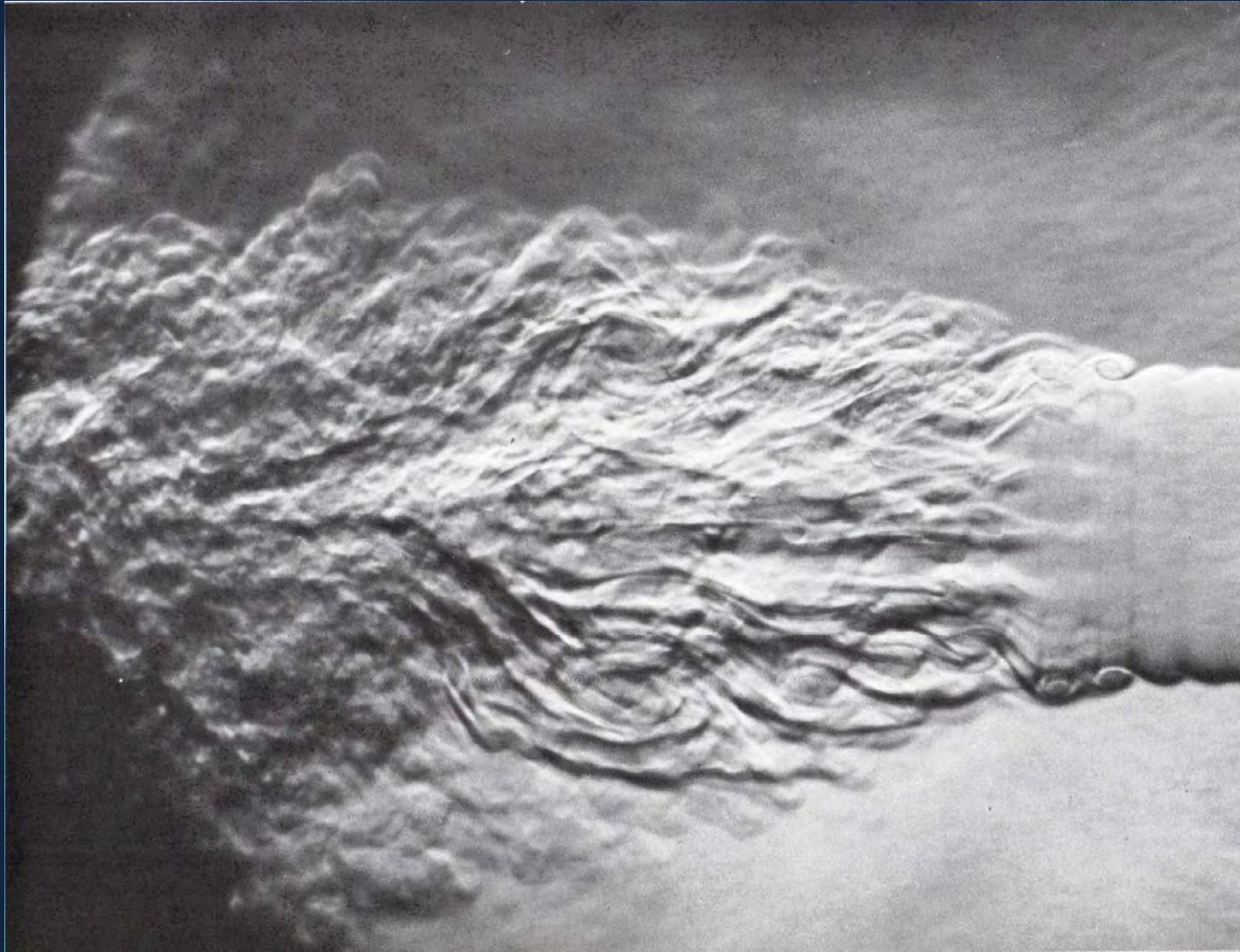
Streamline



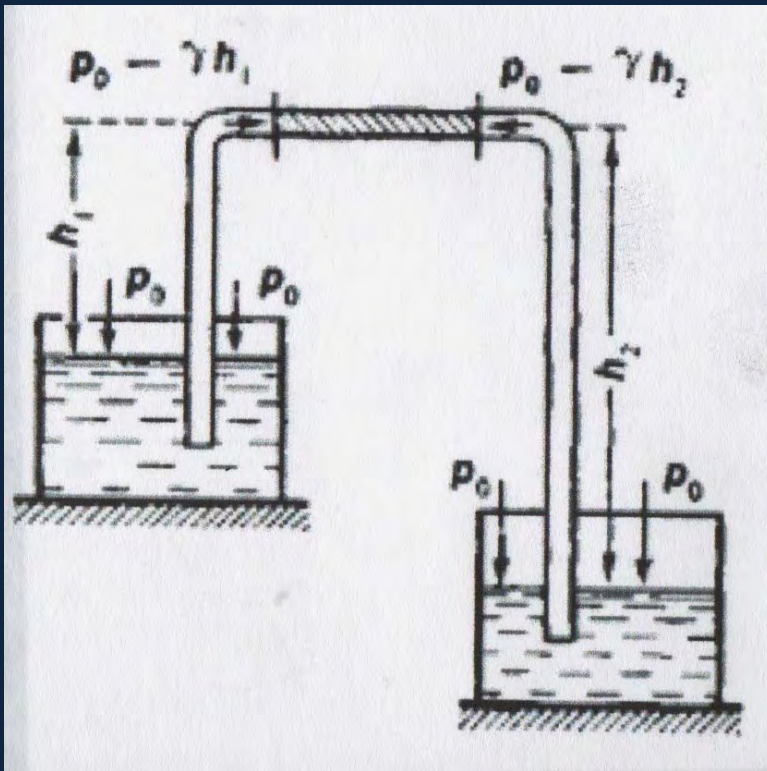
Streamline



Streamline



Streamline



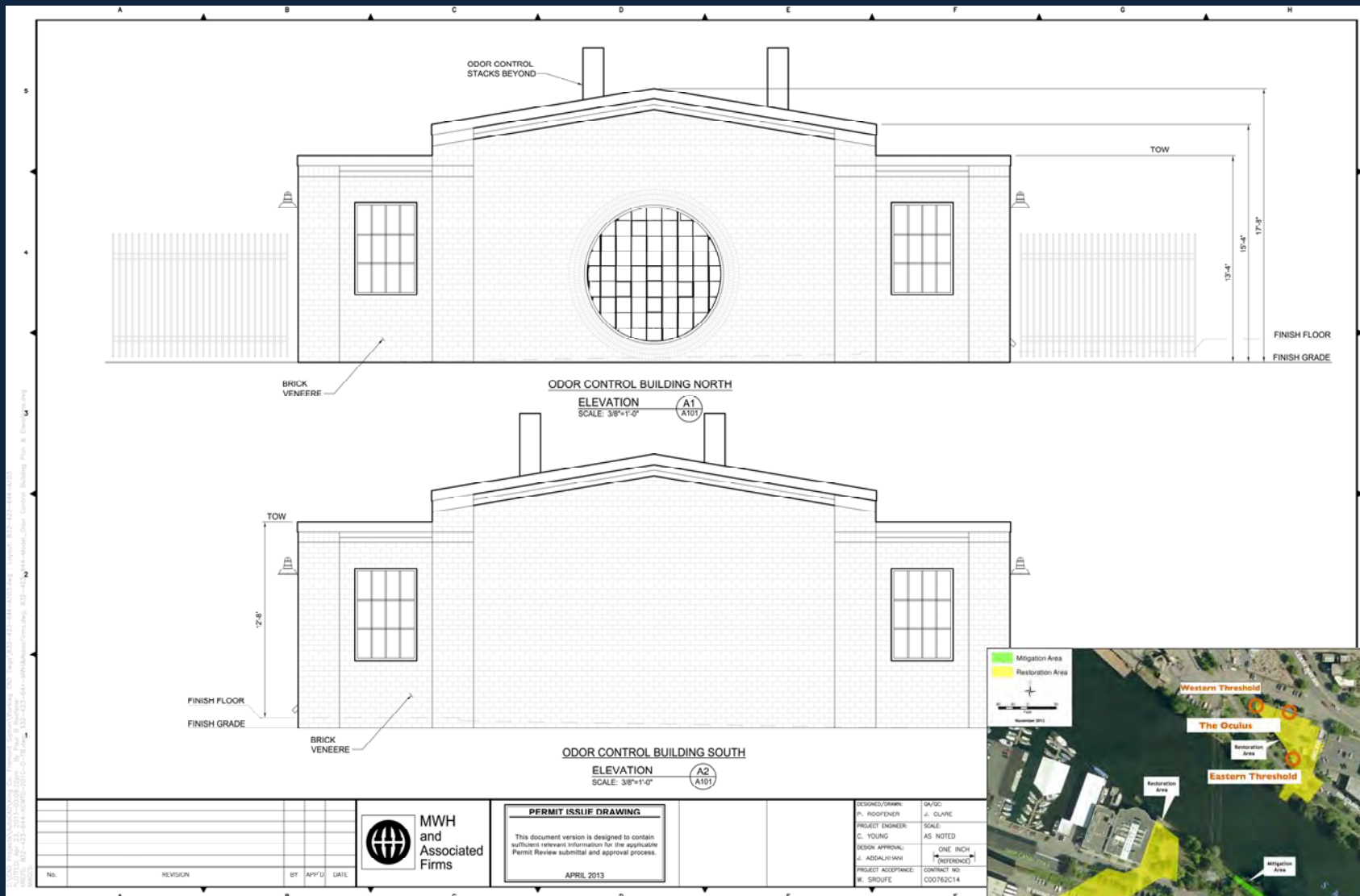
$$\frac{v^2}{2} + gz + \frac{p}{\rho} = \text{constant}$$

$$v_{\max} = \sqrt{2 \left(\frac{P_{\text{atm}}}{\rho} - gh_B \right)}$$

Streamline



Streamline



Streamline

V = FLUID VELOCITY ALONG A STREAMLINE
 G = GRAVITATIONAL ACCELERATION DOWNWARDS
 Y = ELEVATION IN GRAVITY FIELD
 P = PRESSURE ALONG A STREAMLINE
 ρ = FLUID DENSITY

BERNOULLI'S EQUATION

AREA = \rightarrow = SIPHON =
 = PROCESSING =
 CAVITATION = BAD DAY

STREAMLINE

POETICS OF METRICS =

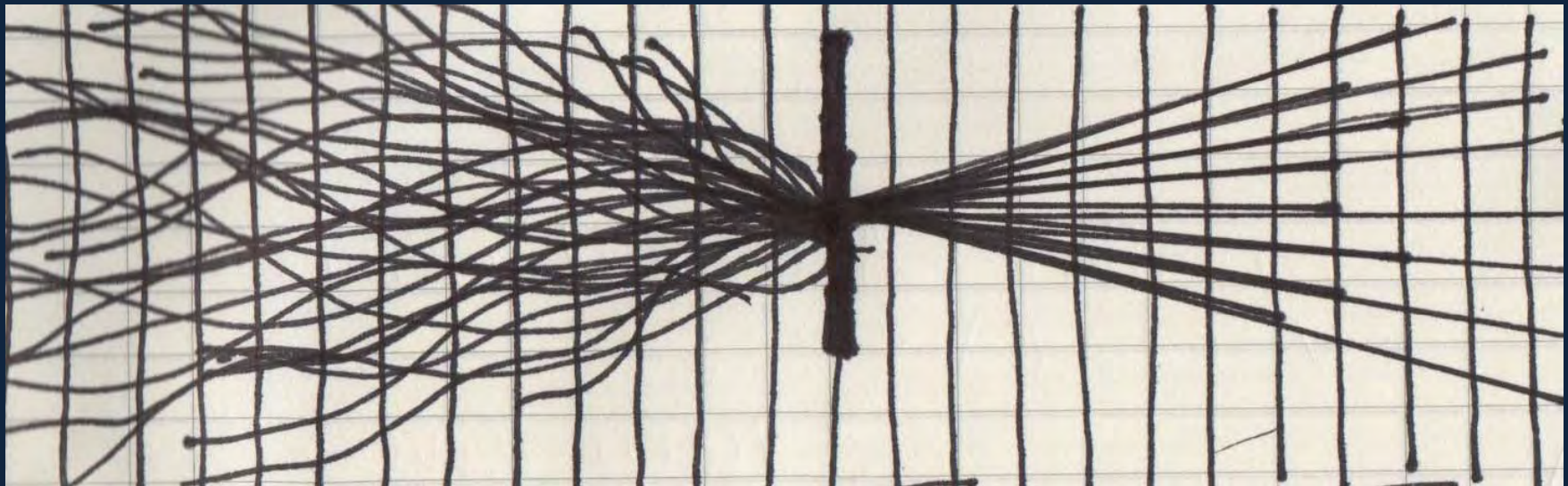
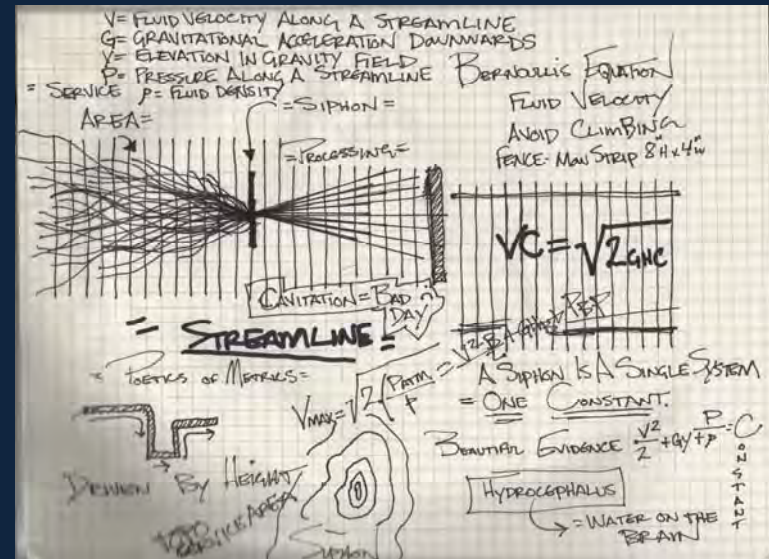
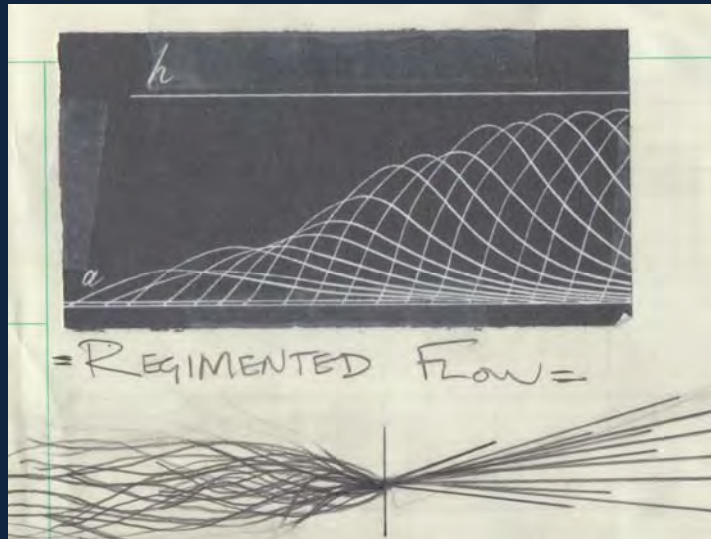
$V_{MAX} = \sqrt{\frac{2(P_{ATM} - P)}{\rho}}$
 Driven By HEIGHT
 TOP SERVICE AREA
 SIPHON

FLUID VELOCITY
 AVOID CLIMBING
 FENCE - MAX STRIP 8" H x 4" W

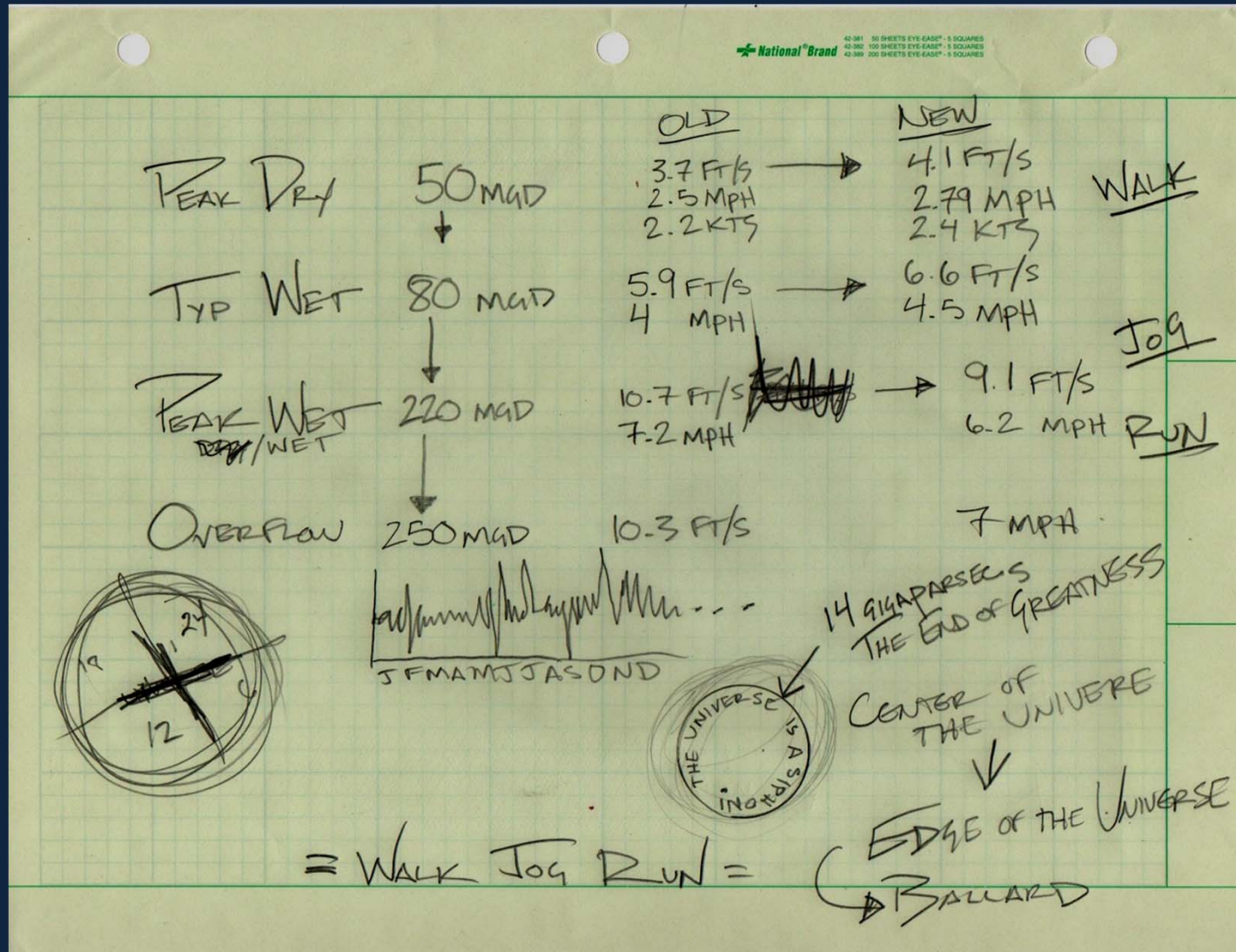
$VC = \sqrt{2GHC}$
 $\frac{V^2}{2} + Gy + P = C$
 A SIPHON IS A SINGLE SYSTEM
 = ONE CONSTANT.
 BEAUTIFUL EVIDENCE
 HYDROCEPHALUS
 = WATER ON THE BRAIN

CONSTANT

Streamline



Streamline



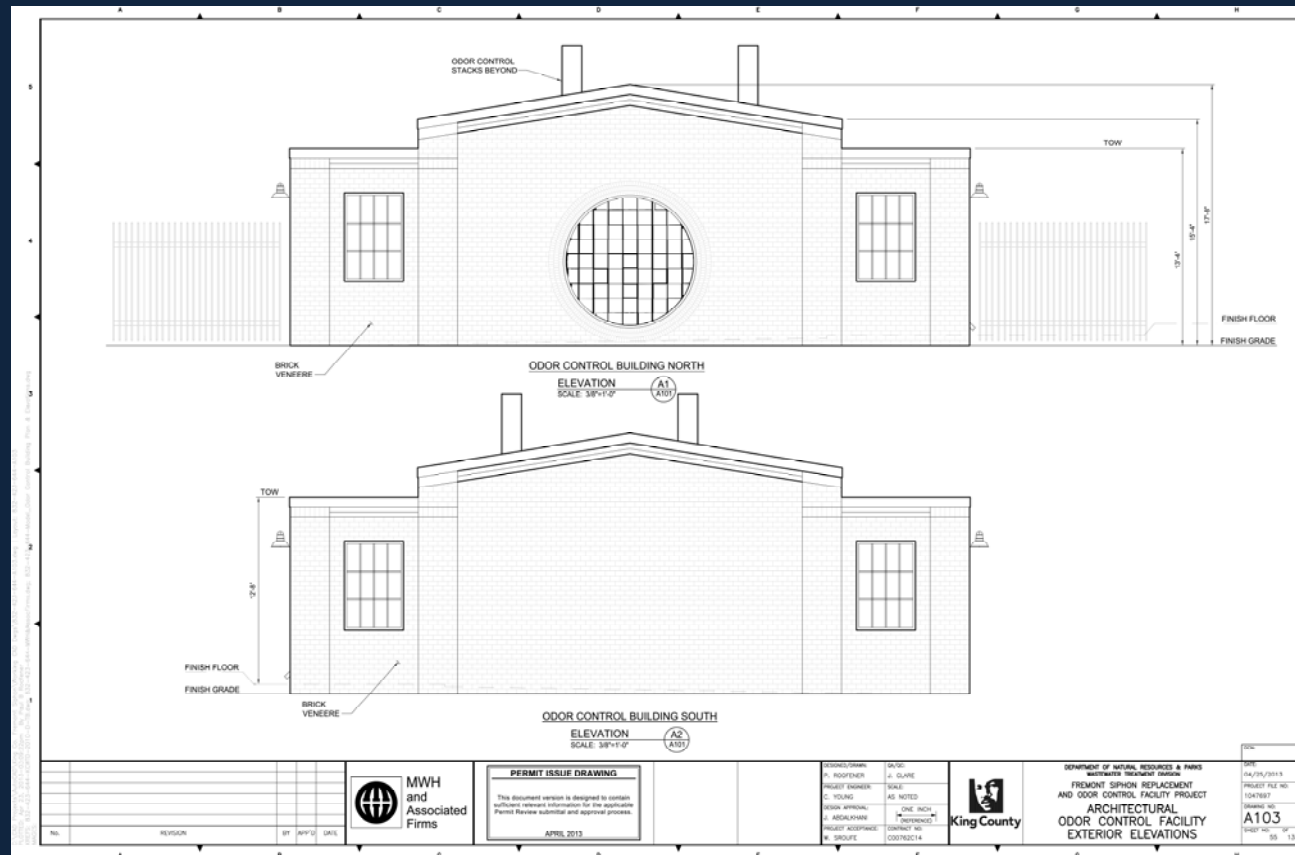
Streamline

Set Your Watch Ahead... Set Your Watch Back...
Away!

Throw Your Watch



Streamline



Streamline



Streamline



Streamline



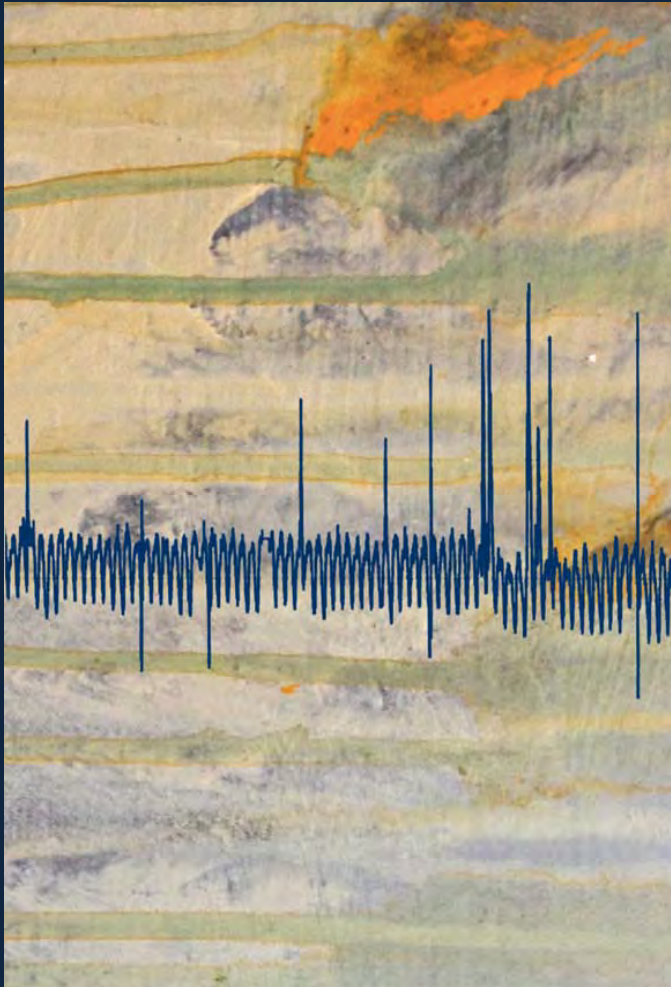
Streamline



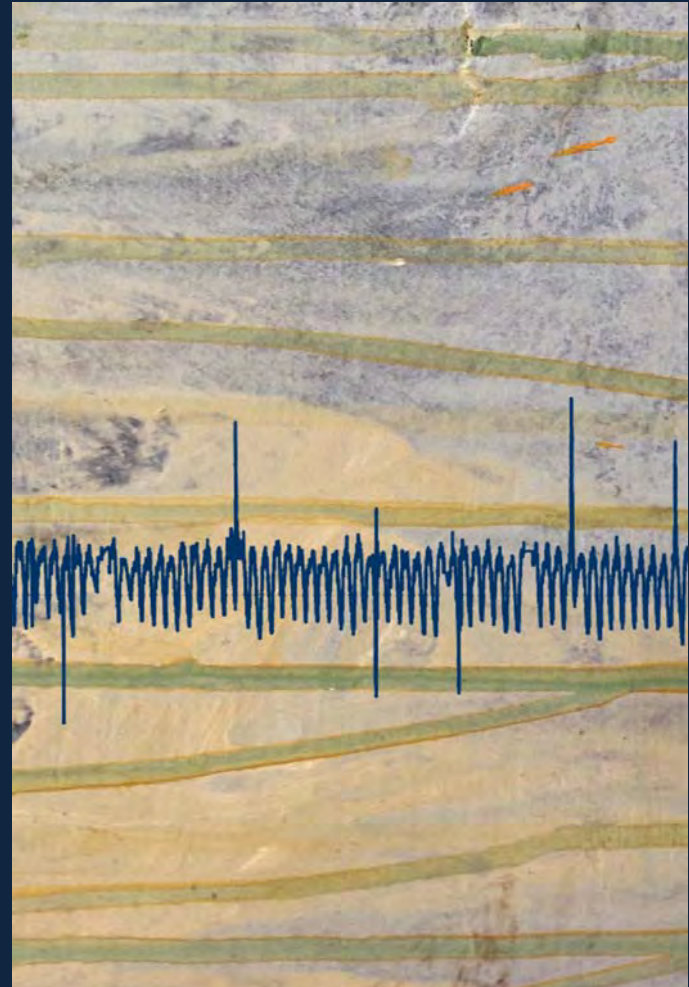
Streamline



Streamline

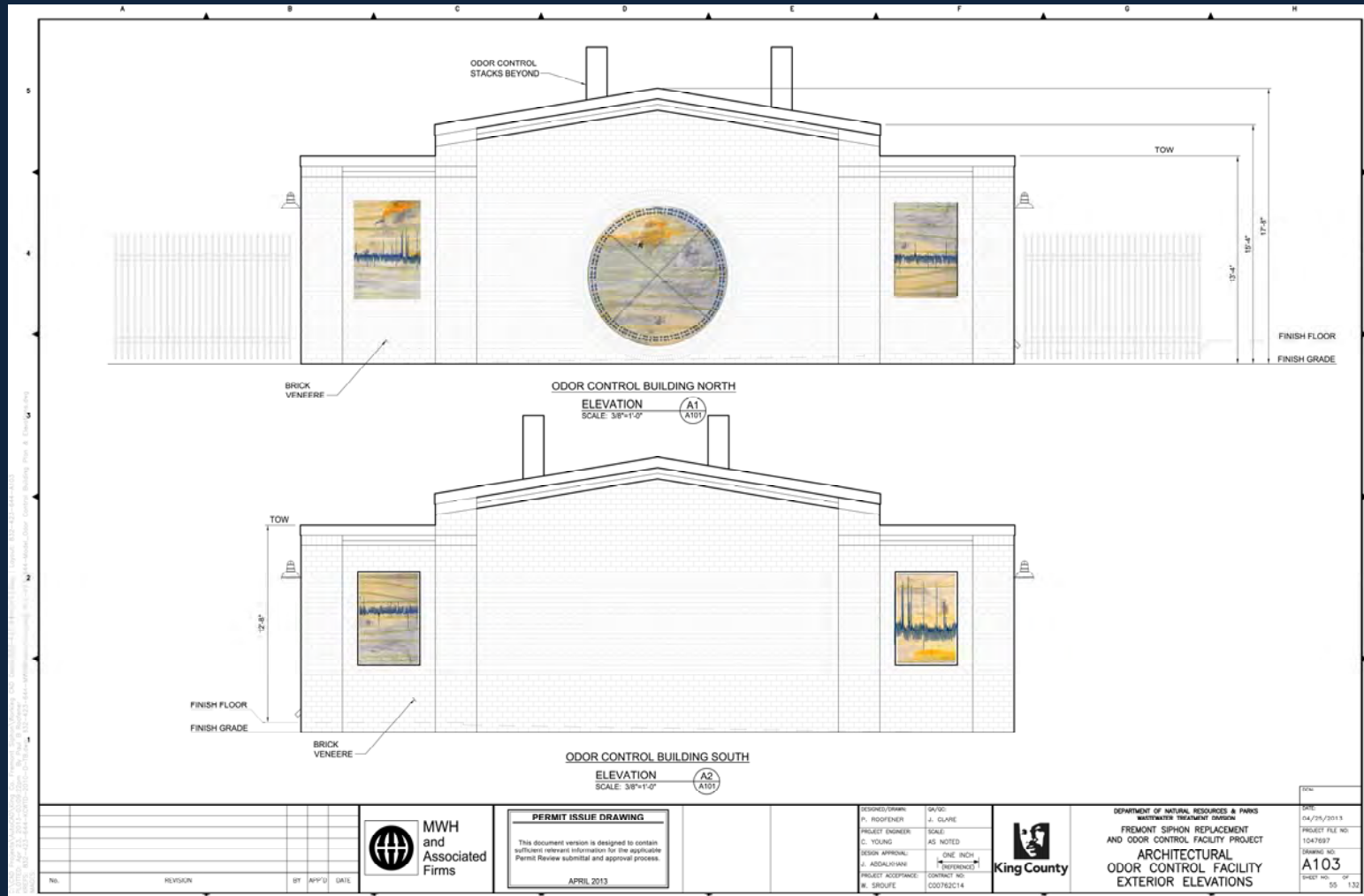


Winter

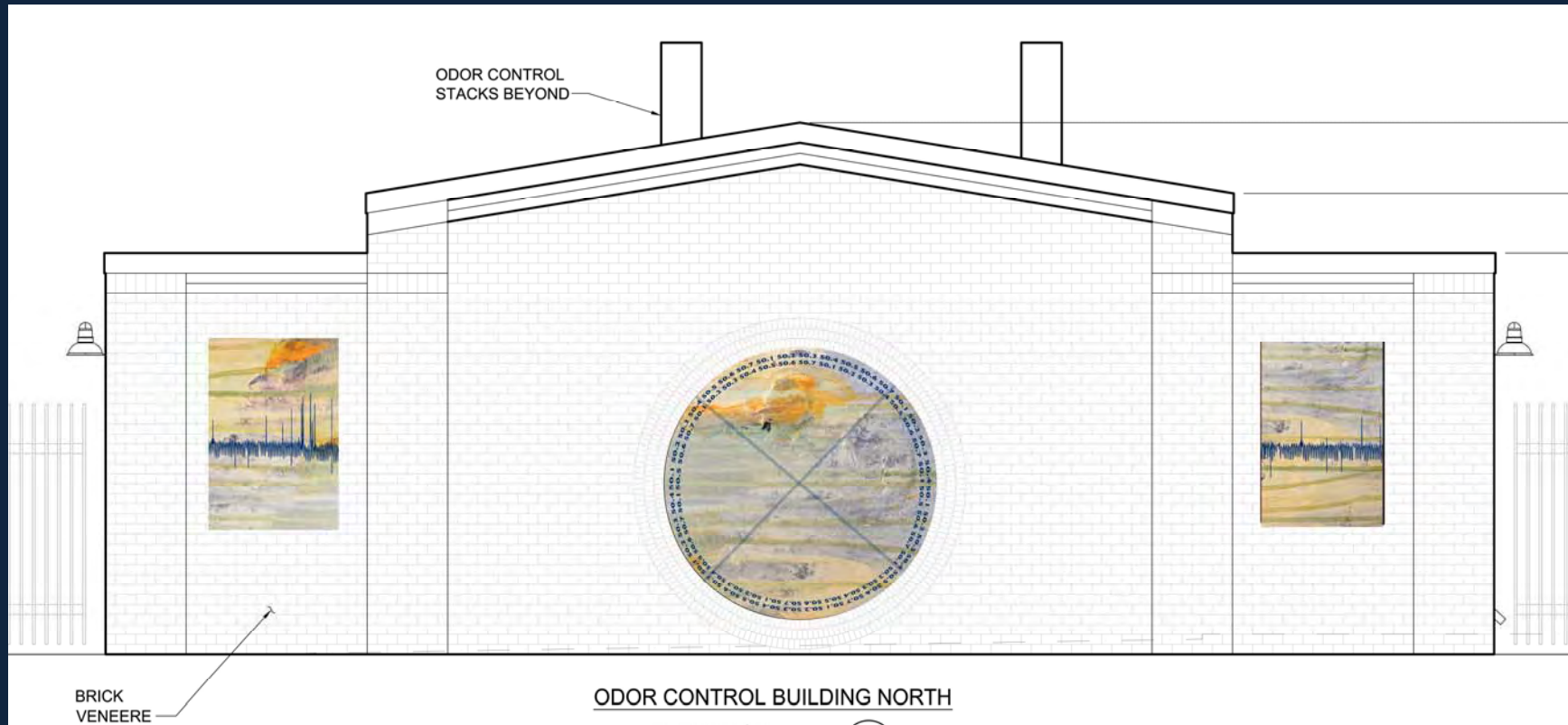


Summer

Streamline



Streamline



Streamline

