



Design Workshop

January 12, 2013



MWH

JACOBS ASSOCIATES

Meeting purpose



- ▶ Understand community characteristics
- ▶ Develop community design principles
- ▶ Explain site constraints
- ▶ Receive input on flexible design elements
- ▶ Inform final site design



Agenda



Project overview

Community Values Exercise

- Discuss values and vision
- Develop design principles

Site overview

- Site constraints
- Flexible elements

Lunch

Visit stations in small groups

Group discussion

Public art process overview

Project Overview

Will Sroufe



What is WTD's Service Area?

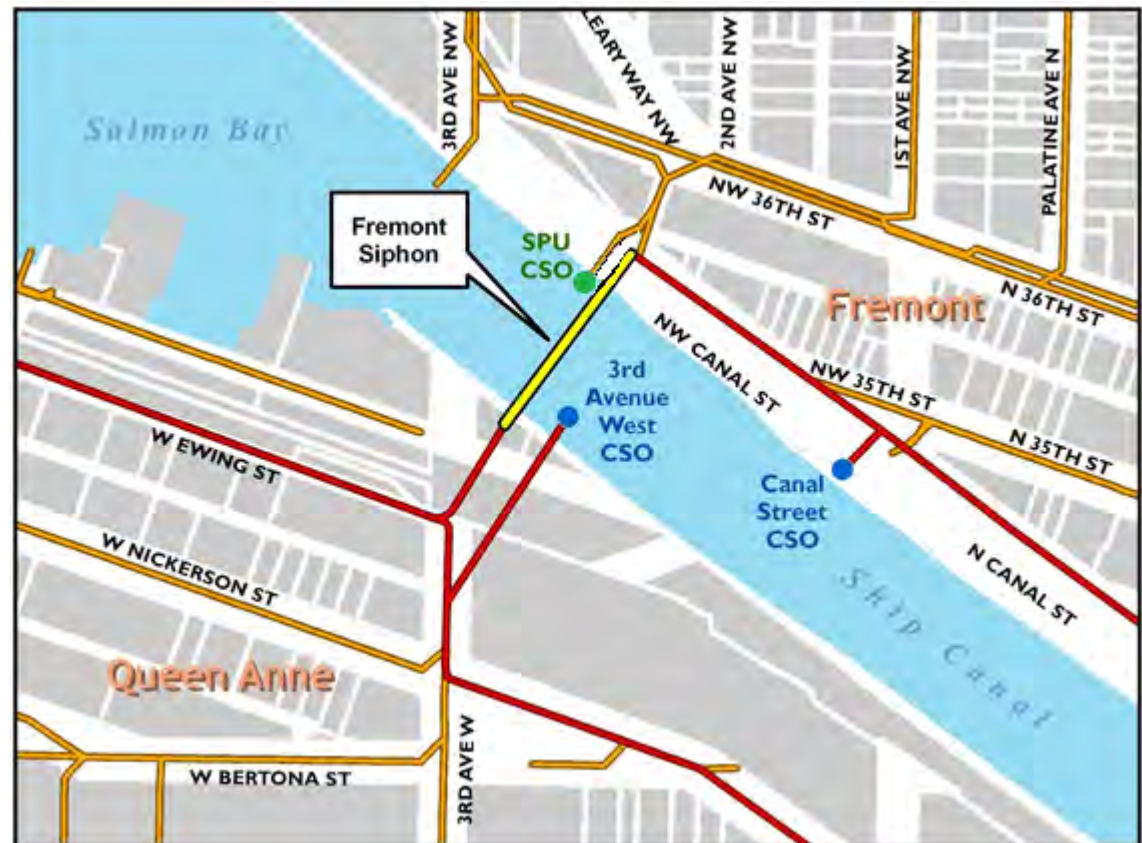
King County
Wastewater Treatment
Division (WTD)
provides regional
wastewater service to
34 local sewer utilities
in King, Snohomish
and Pierce counties



Overview: wastewater conveyance in the project area



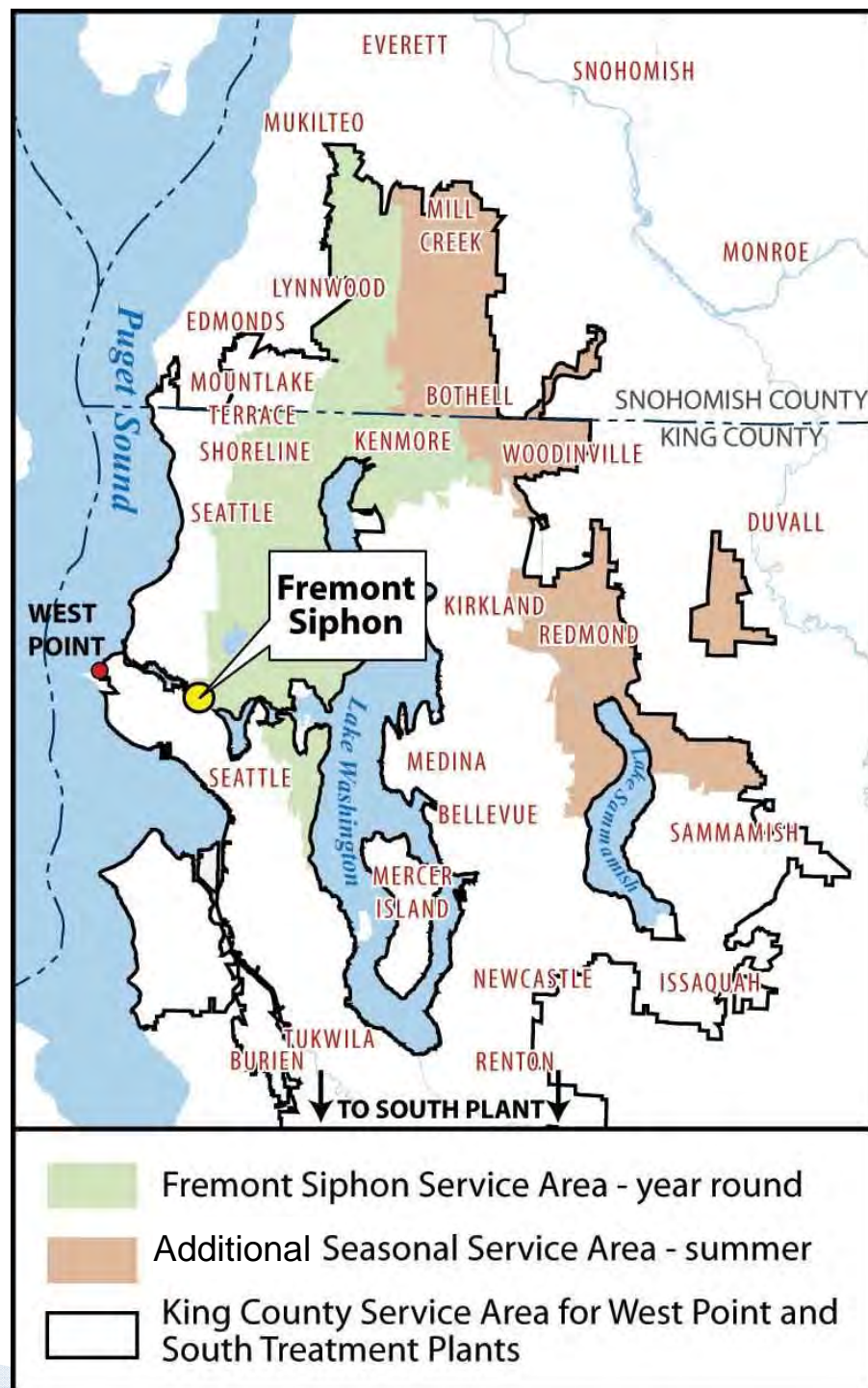
- ▶ Seattle Public Utilities collects most residential and commercial flow
- ▶ King County receives flow from SPU's system
- ▶ Both SPU and King County have CSO facilities that discharge into the Ship Canal



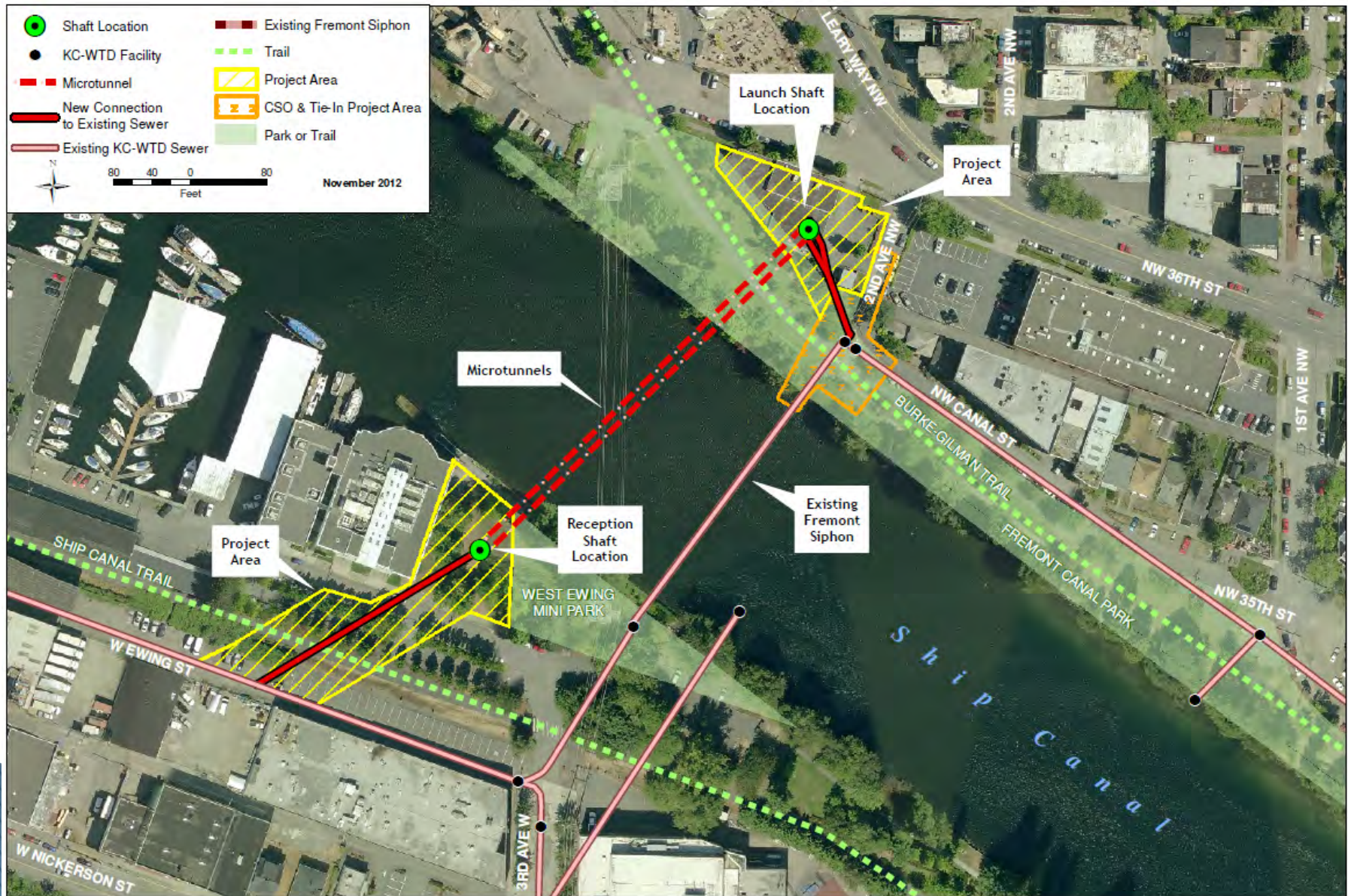
- King County sewer lines
- Seattle Public Utilities sewer lines

The Fremont Siphon is a critical system component

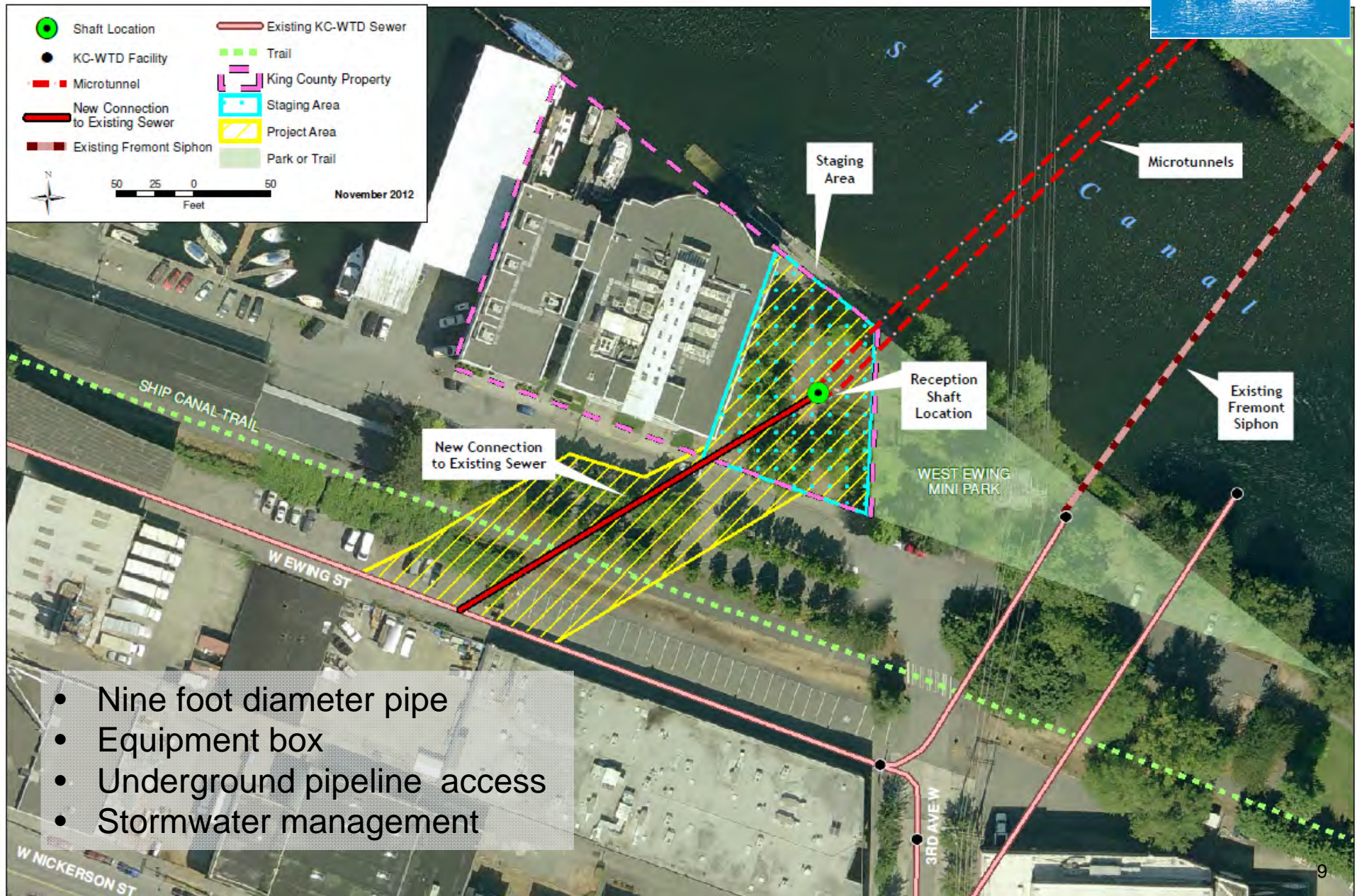
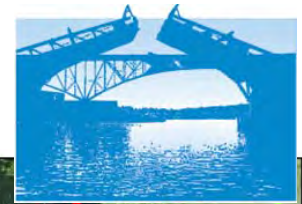
- ▶ Serves 60 square miles in winter, 114 in summer
- ▶ Carries half the wastewater going to the West Point Treatment Plant
- ▶ Needs replacement after 100 years of service



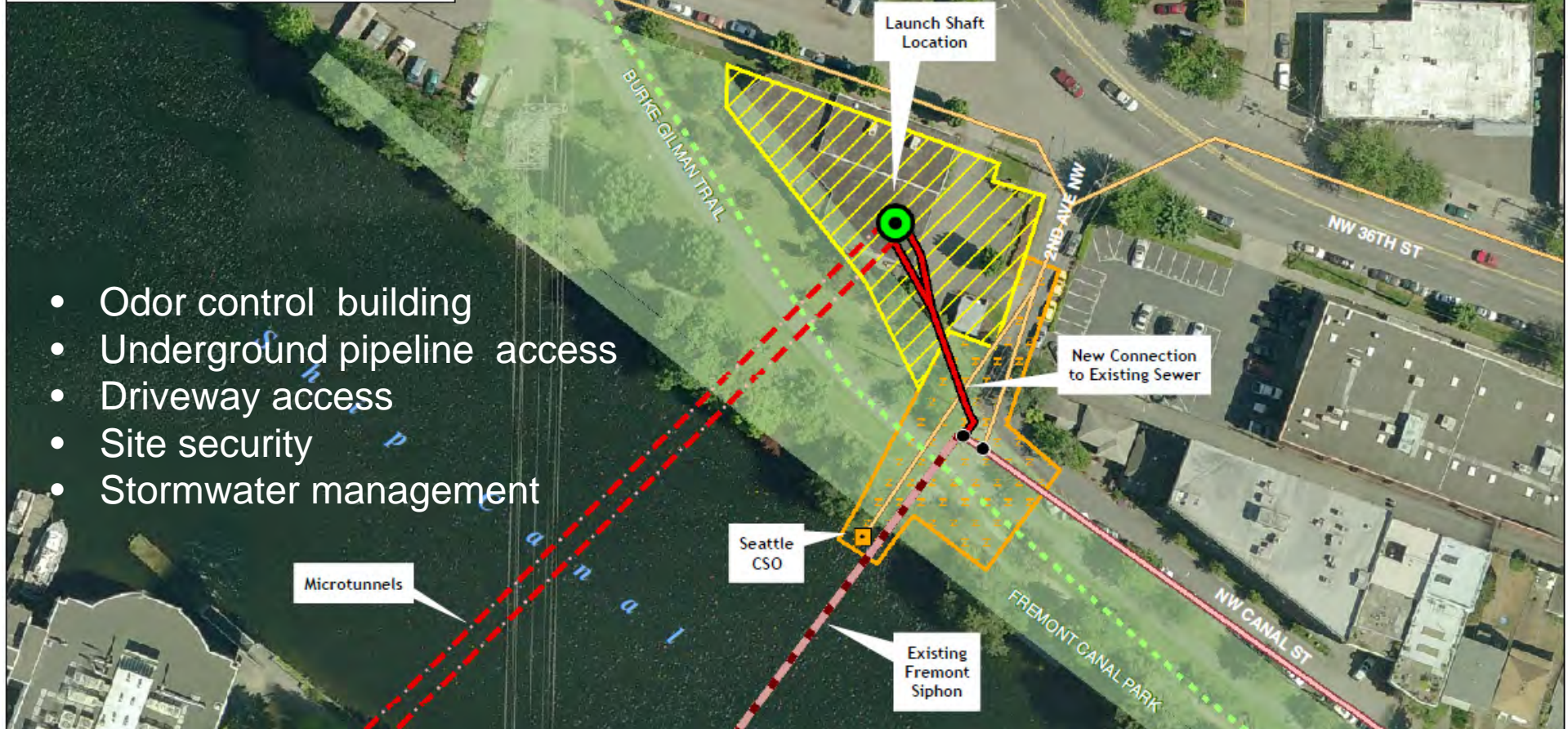
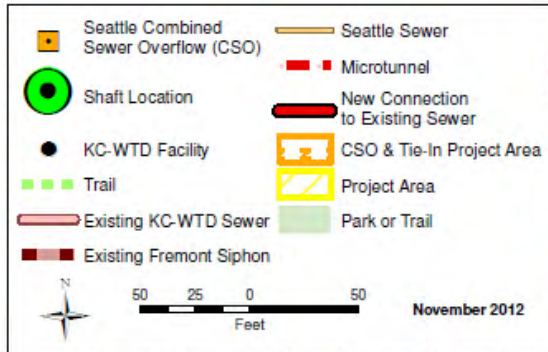
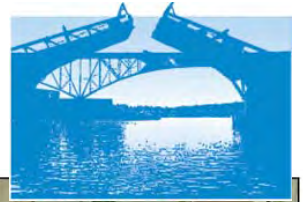
Fremont Siphon Project Area



Queen Anne Project Area



Fremont Project Area



- Odor control building
- Underground pipeline access
- Driveway access
- Site security
- Stormwater management

Fremont Site Plan



Group Discussion: Community Values and Design Principles

Penny Mabie



Site overview – Constraints and Opportunities

*Will Sroufe
Adair Muth*



Site Constraints



Specific Constraints: Facility

- ▶ Building:
 - Footprint 40 x 30 feet
 - Height up to 15 feet tall
 - Set back minimum of 5 feet from property line
- ▶ 2 odor control stacks:
 - Height approx. 20 feet
 - Approx. 30 inch diameter
 - Stacks approx. 12 feet apart
- ▶ 4 lift slabs (*see photo*)
 - Approx. 4 x 8 feet



Specific Constraints: Facility

- ▶ 2 driveways and 4 parking spaces:
 - Provide access for:
 - Annual odor control maintenance – 40 ft vactor truck and 41 ft boom truck
 - Weekly to monthly inspections and protective maintenance (up to 4 vehicles)
- ▶ 3–4 manholes
 - 24 to 30 inch diameter



Specific Constraints



- ▶ Security fencing:
 - Around core area for public and operations and maintenance safety
 - Height 8 feet
 - Discourage climbing
 - Low maintenance

Permitting Constraints



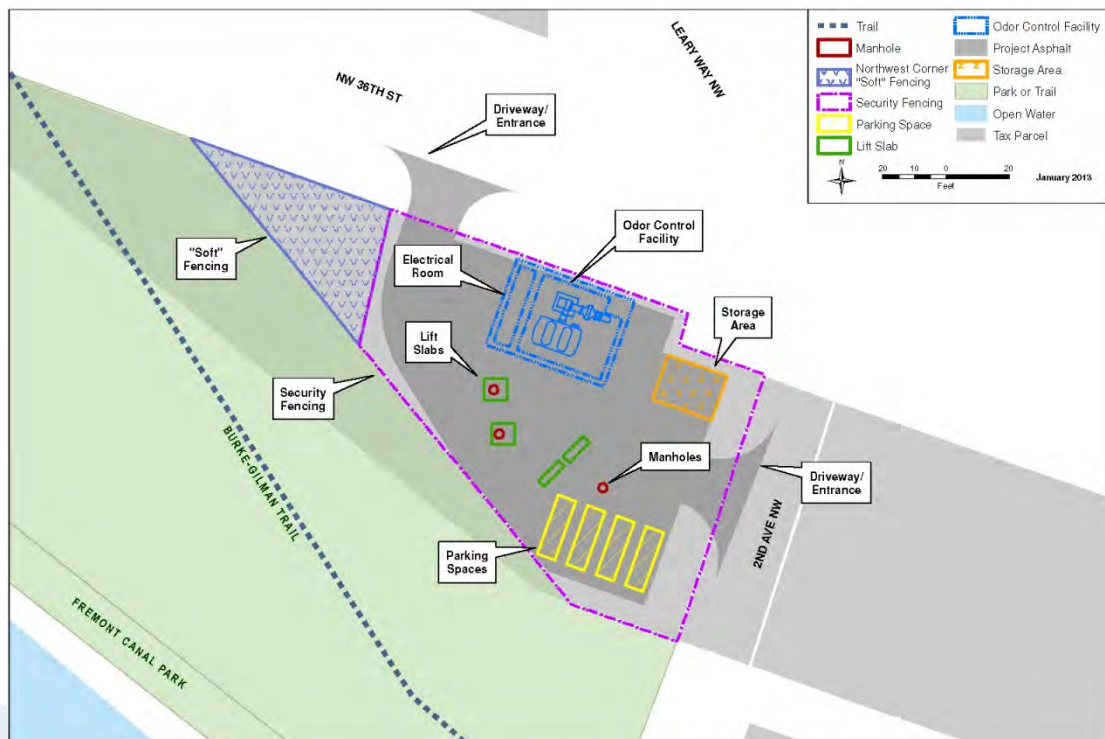
- ▶ Right of way – Sidewalks, street restoration, ADA ramps, street trees, lighting
- ▶ Facility site – Building specifics, green stormwater infrastructure
- ▶ Park – Restoration

Permitting Timeline

2011	2012	2013	2014	2015	2016

Flexible Elements

- ▶ Lighting
- ▶ Look and feel of building and odor control stacks
- ▶ Fencing and northwest corner
- ▶ Landscaping and views



Visit Stations and Provide Input!

*Penny will let you know when
to switch stations.*



Group Design Discussion

Penny Mabie



Public Art Process Presentation

Cath Brunner





Next Steps

Adair Muth



Community Input



- ▶ Provide input to the project team today
- ▶ Send in a comment form by January 25
- ▶ Materials and comment forms will be posted online and mailed to community members on request

How will we use your input?

The design team will use the themes and principles developed today, and all comments received to inform detailed design of the flexible elements



Next Steps



Permitting and Design

- ▶ Winter – design team will develop design based on input from community
- ▶ Early spring – design and community input about design submitted to City for permitting
- ▶ Summer – facility design and construction specifications finalized

Community outreach

- ▶ Spring– share submitted site design with community via website and newsletter
- ▶ Spring/Summer – public meeting and newsletter to provide update on project design, permitting and construction
- ▶ Summer 2014 – pre-construction public meeting

Contact us



Website: Visit www.kingcounty.gov and search “Fremont Siphon”

Adair Muth

- ▶ **Phone:** 206-263-7319
- ▶ **Email:** adair.muth@kingcounty.gov

For hard copies of the website, please contact Adair Muth