



King County

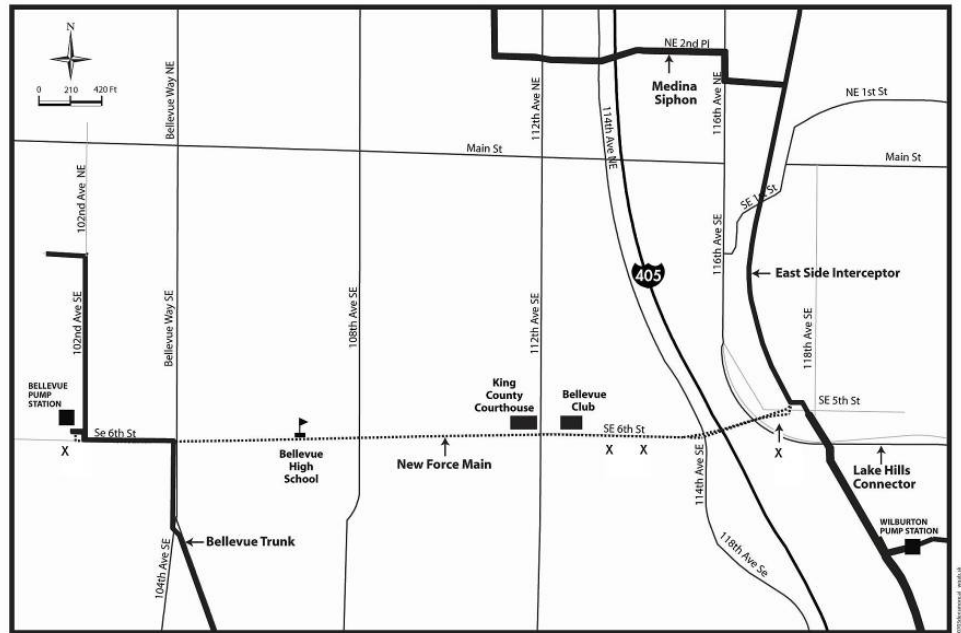
Department of Natural Resources and Parks
Wastewater Treatment Division

BELLEVUE FORCE MAIN INSTALLATION PROJECT

JULY 2007

To protect public health and the environment, King County will build a new wastewater force main to connect the Bellevue Pump Station to a regional pipeline east of I-405 that transports wastewater to King County's wastewater treatment plant in Renton.

The new 5,300-foot force main will help meet the wastewater treatment needs in west Bellevue and Bellevue's central business district for the next 50 years.



New Bellevue Force Main
Bellevue Pump Station Upgrade

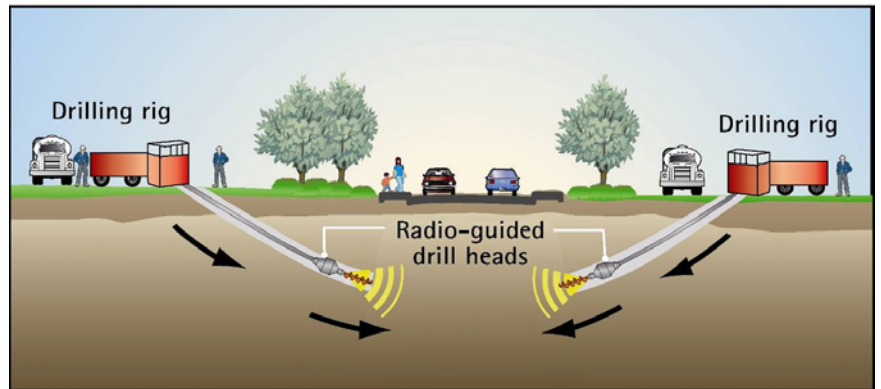
■ Pump Station
— Force Main Route
X Drill Site
— KC-WTD Sewer
— School

The proposed installation of this force main is subject to the City of Bellevue's approval of the project and to the City of Bellevue's approval of the project. The City of Bellevue's approval of the project is subject to the City of Bellevue's approval of the project. The City of Bellevue's approval of the project is subject to the City of Bellevue's approval of the project.

King County
Department of
Natural Resources and Parks
Wastewater Treatment Division

Horizontal Directional Drilling

To minimize community impacts and protect public safety, King County's contractor will use an innovative technique called horizontal directional drilling to install most of the new pipe. Drilling rigs located at opposite ends of the pipe alignment use radio-guided drill heads to bore a pilot hole toward each other. The pilot hole is completed underground, and widened by reaming tools to accommodate the sewer pipe. This type of drilling reduces the risk to property and the need for traffic detours, excavation and repaving.



Drill sites

- Southeast Sixth Street, west of 102nd Avenue Southeast in front of the Bellevue Pump Station.
- Southeast Sixth Street between 112th and 114th Avenues Southeast, east of the Bellevue Club. The western drill route beginning at the Bellevue Pump Station ends here, and the eastern drill route terminating at the Lake Hills Connector starts here.
- Westbound lane of the Lake Hills Connector near the Wilburton Trestle.

King County urges drivers, bicyclists and pedestrians to use extreme caution near these areas.

(more)

QUESTIONS? Call the 24-Hour Construction Hotline: 206-296-4081



King County

Department of Natural Resources and Parks
Wastewater Treatment Division

BELLEVUE FORCE MAIN INSTALLATION PROJECT

JULY 2007

What to Expect

- Work will generally occur between 7 a.m. and 5 p.m. on weekdays and from 9 a.m. to 6 p.m. on Saturdays.
- Noise, equipment and activity typical of a construction site.
- Increased truck traffic near work sites.
- Traffic and pedestrian detours near work sites.

Work Schedule

The project begins in late July and should finish in early 2008. Construction will occur in the following sequence:

Summer 2007

Crews stage equipment and supplies along Southeast Sixth Street in front of the Bellevue Pump Station and just east of the Bellevue Club. Drilling begins at both sites, proceeding east from the Bellevue Pump Station and west from the Bellevue Club. Equipment and supplies stored at the 118th Avenue SE and SE 5th Street intersection, north of the Lake Hills Connector work site.

Fall 2007

Drilling finishes at Bellevue Pump Station and begins at Lake Hills Connector work site, heading west towards the Bellevue Club.

Winter 2007-2008

Drilling finishes at Lake Hills Connector site. Pipe testing, repaving and restoration work are completed before the project concludes in early 2008.

For More Information

If you have any questions or concerns during the construction, please call the Bellevue Force Main Installation 24-hour construction hotline at 206-296-4081, or visit the project website at <http://dnr.metrokc.gov/wtd/projects/bellevue/>.

Alternative Formats Available
206-684-1235 | 711 (TTY Relay)

QUESTIONS? Call the 24-Hour Construction Hotline: 206-296-4081