

# BALLARD SIPHON

## Replacement Project

Department of Natural Resources and Parks • Wastewater Treatment Division

### December 10, 2012 Project Update

**North site:** Work continues to build the structure that will connect the existing sewer pipes to the new siphon. Neighbors can expect continued activity and heavy truck traffic.

*El sitio del norte: Continúan los trabajos para construir la estructura que conectará la tubería de alcantarilla existente al nuevo tubería de sifón. Vecinos pueden esperar actividad continuada y tráfico de camiones.*

**South site:** Tunneling from the south site continues. Work also continues to construct the pipe that will connect the new siphon to the existing system. Neighbors can expect continued activity and increased truck traffic around the site.

*El sitio del sur: La construcción de un túnel desde el sitio del sur continua. Continúan los trabajos para construir la estructura que conectará la tubería de alcantarilla existente al nuevo tubería de sifón. Vecinos pueden esperar actividad continuada y tráfico de camiones aumentado.*

**Typical work hours:**

7:00 a.m. – 6:00 p.m. weekdays

**24-hour project hotline/Para más información\*:**

206-296-3848

(\*Señale su idioma y llamaremos a un intérprete. El servicio es gratuito.)

### NORTH SITE ACTIVITIES:

Work continues on the north site to build the regulator structure, which will connect the existing sewer pipes to the new siphon pipeline (*see photo to right*). Work to complete this structure will continue through early 2013.

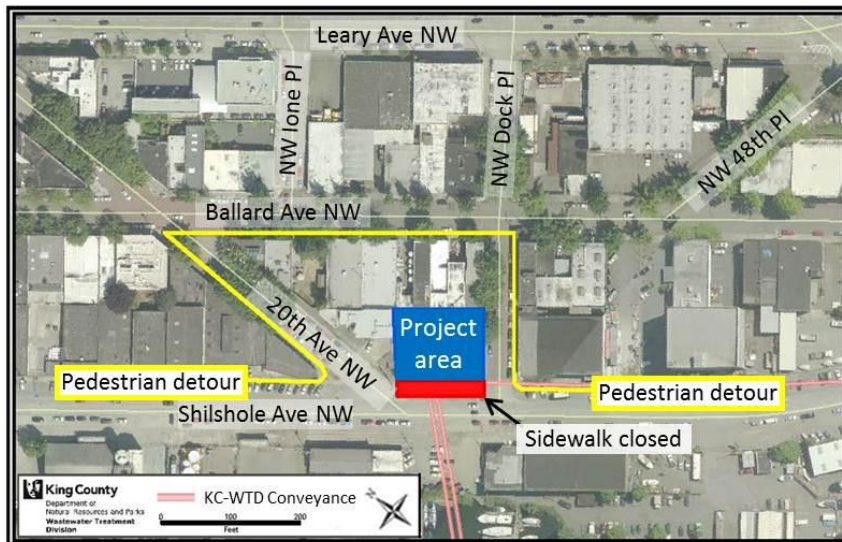
Community members can expect increased truck traffic around the project area. King County urges drivers and bicyclists to continue to use caution near the site. Pedestrians in Ballard should follow sidewalk detour signs around the north site (*see map below*).



### WHAT TO EXPECT AT THE NORTH SITE:

- High levels of activity involving crews, cranes, excavation equipment and trucks
- Increased truck traffic on and around Shilshole Avenue Northwest
- Shilshole Avenue Northwest sidewalk remains closed in front of the project site

(over)



**Alternate formats available: call 206-684-1280 or TTY Relay: 711**

# BALLARD SIPHON

## Replacement Project

Department of Natural Resources and Parks • Wastewater Treatment Division

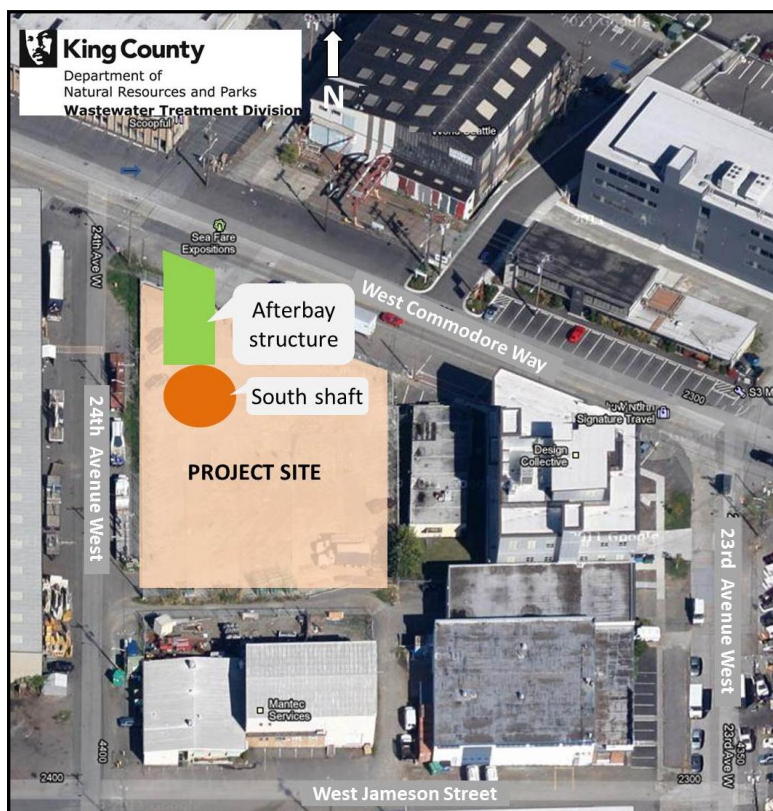
### SOUTH SITE ACTIVITIES:

Tunneling continues from the south shaft towards the north shaft in Ballard. There will be **increased activity and truck traffic** around the project area. Tunneling is expected to be complete in early 2013.

Work continues on the south site to construct the afterbay structure, which will connect the new siphon to the existing system (*see map to right*).

### WHAT TO EXPECT AT THE SOUTH SITE:

- Increased truck traffic around West Commodore Way
- High levels of activity involving crews, cranes, excavation equipment and trucks
- Possible work on Saturdays and/or longer work hours during the week



### Project team completes tunnel rescue training at new Satsop Business Park training facility

The Ballard Siphon Replacement Project has a Tunnel Rescue Team ready to respond to emergencies during tunneling activities. King County's tunnel contractor employees trained in early November at the new Satsop Business Park training facility in Elma, WA. The team responded to various scenarios, some of which were hundreds of feet inside pitch black tunnels with machine-generated smoke to add authenticity.



### FOR MORE INFORMATION:

**Contact:** Adair Muth at [adair.muth@kingcounty.gov](mailto:adair.muth@kingcounty.gov) or 206-263-7319

### 24-hour Project Hotline

Para más información: 206-296-3848

**Website:** Visit [www.kingcounty.gov](http://www.kingcounty.gov) and search "Ballard Siphon"