



King County

Task Force Kick Off Meeting
May 21, 2014
Facilitated by the Forum for Youth Investment

Welcome!

- History Context and Purpose
 - Councilmember Rod Dembowski
- Welcoming Remarks
 - King County Executive Dow Constantine
- Consultant Introductions
 - Councilmember Dembowski
 - Elizabeth Gaines, Forum for Youth Investment
 - Wendy Watanabe, Watanabe Consulting



King County

the forum

FOR YOUTH INVESTMENT



The Forum for Youth Investment is a nonprofit, nonpartisan “action tank” dedicated to helping communities and the nation make sure all young people are **Ready by 21 -- ready for college, work and life.**

Working in partnership with government, business, education and nonprofits, we provide a framework, coaching and tools for leaders who care about youth and care about change.

Today's Agenda

- Understanding our mission
 - Timeline, meetings, results
 - Operating guidelines
 - Responding to the ordinance
 - Discussion and then confirming decisions
- Affirming the Vision
 - Using a broad framework to start
 - Understanding the Forum's theory of change
 - Getting to core principles
 - Discussion and then confirming decisions
- Break

Today's Agenda (cont'd)

- Understanding our strategy teams
 - Purpose and role of each team
 - Discussion and confirming decisions
- Getting into strategy teams
 - Using the expertise of the task force and beyond
 - Dividing up the work
 - Scheduling
- Next steps
- Public Comment

Our timeline

Target dates	Activity
May 21	Task Force Kickoff Meeting
Week of June 16 th or 23 rd	Strategy team meetings (possible full task force meeting)
July 23	Full task force meeting with continued work in strategy teams
August	Drafting progress report informed by strategy teams' work
September 1	Task force review of progress report
September 11	Submit progress report to King County Council
Late September	Task Force Meeting
Oct./Nov.	Host three Community Conversations
Nov./Dec.	Task Force Meeting
Jan – March 2015	Approx. three Task Force Meetings
April 2015	Submit Report to County Council

Operating Guidelines

- Define terms and acronyms
- Think broadly about strategies, stakeholders & accountability
- Identify conflicts of interest
- Commit to continuous attendance (if designees they must attend every session)
- Flipchart issues as they arise and follow-up later
- Seek balance between obtaining input and moving forward in a timely fashion
- When expressing disagreement, offer a proposal to move us forward
- Work outside of Task Force meetings and use networks and expertise
- Confirm decisions as we go (strive for consensus but move forward if not full)

Process for Receiving Public Comment

- Public signs in
- Write on comment cards
- Is asked to share at end of meeting
- Recorded in meeting notes
- Will also look for ways to engage public attendees with activities
- Additional opportunity for public input online and in community conversations

Mission of the Task Force

- To develop a youth action plan that recommends to the Council a set of priorities for King County in serving infants through young adulthood.
- Deliverables associated with:
 - Visioning
 - Data
 - Outreach
 - Policy recommendations
 - Prioritizing resources
 - Accountability system recommendations

Discussion/ Q & A

CONFIRM DECISIONS AND UNDERSTANDING

The Forum's Ready by 21 Theory of Change

- A methodology for planning, participation and evaluation
- Long term goal “All youth ready for college, work and life”
- Linked to intermediate goals (prerequisites) of improved supports and settings and more effective leaders.
- Adaptive based on meeting local leaders where they are and inclusive of many perspectives in achieving solutions.

Ready by 21 Theory of Change

Moving the small gear makes a big difference



King County



Broad Partnerships
Big Goals
Best Data
Bold Actions

Coordinated
Accessible
Well-Attended
High Quality

Developmentally On Track
Productive
Connected
Healthy & Safe

Child and youth well being trends in the U.S.

Economic well being:

- **Teens not in school and not working**
 - 32 states got worse

Education:

- **Youth not graduating on time**
 - 19 states got worse or stayed the same

Health:

- **Low birth weight babies**
 - 25 states got worse

Family and Community:

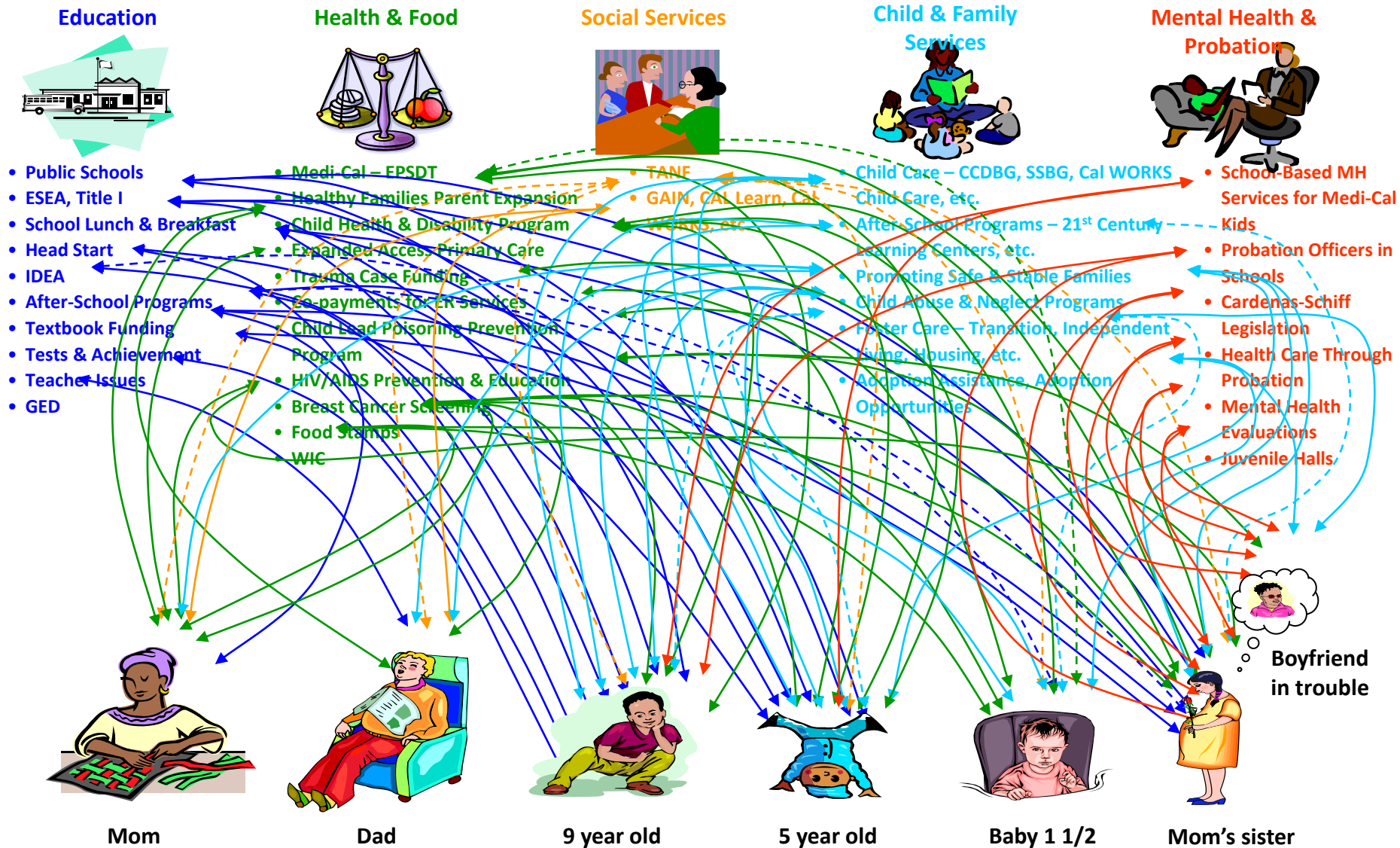
- **Children living in high poverty areas**
 - 40 states got worse
- **Teen births**
 - 23 states got worse

Kids Count 2013 data

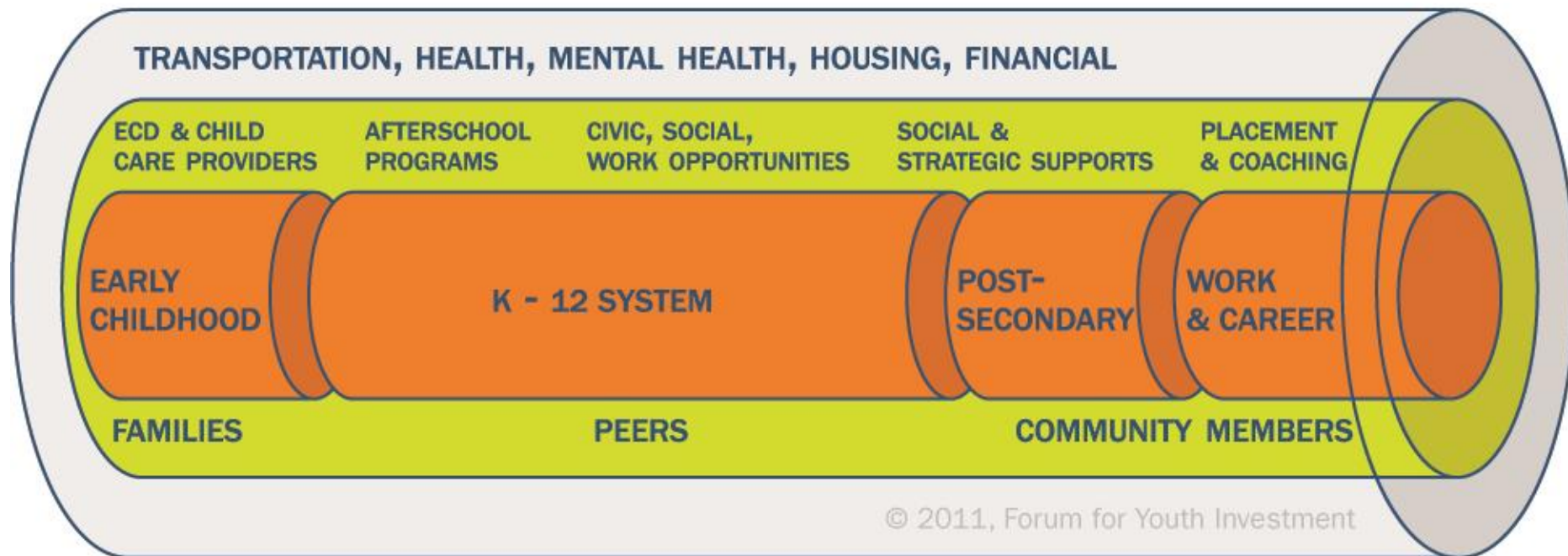
The Readiness Target



Beginning to untangle the mess

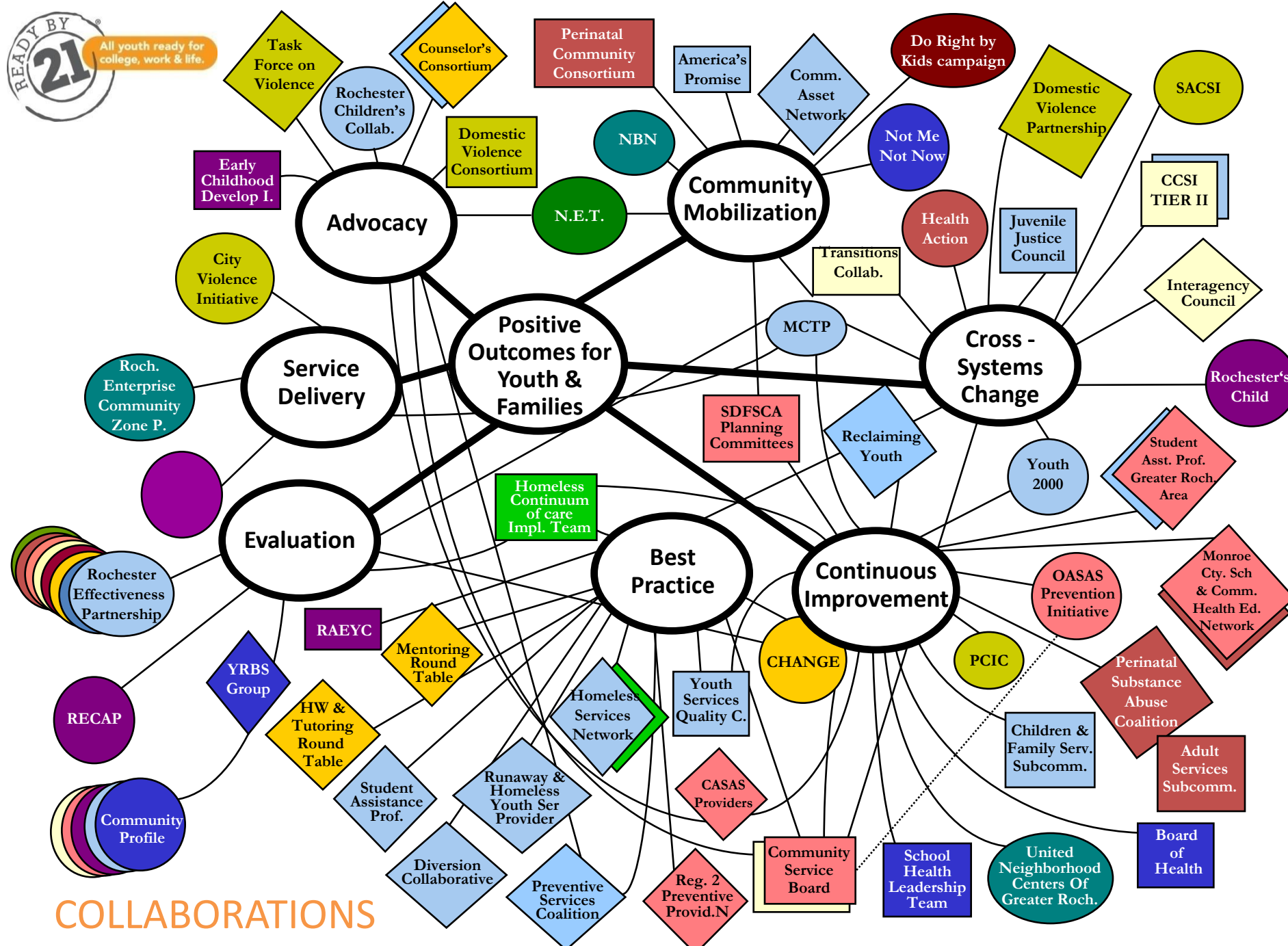


The Insulated Pipeline



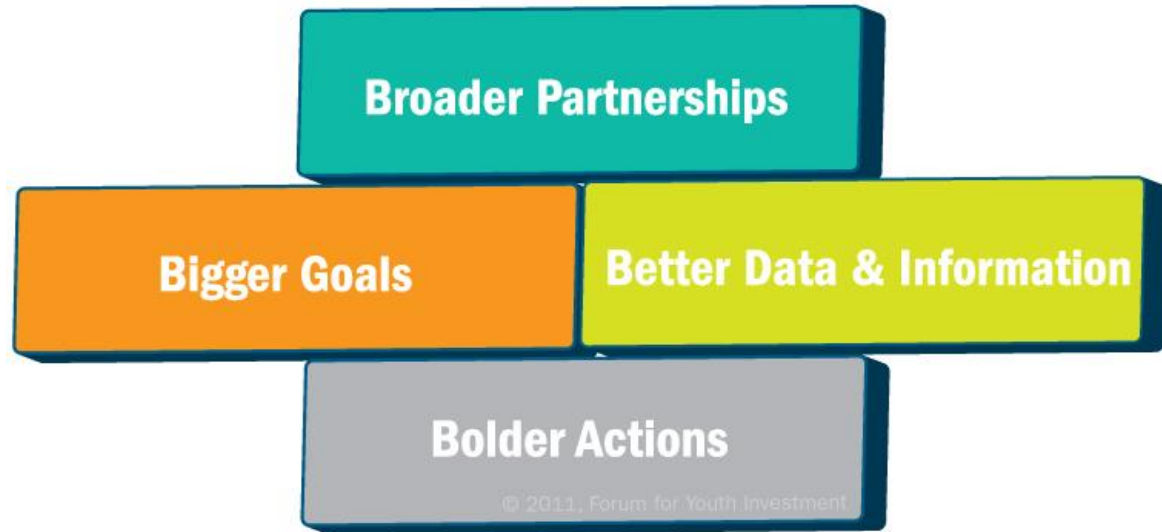


All youth ready for college, work & life.

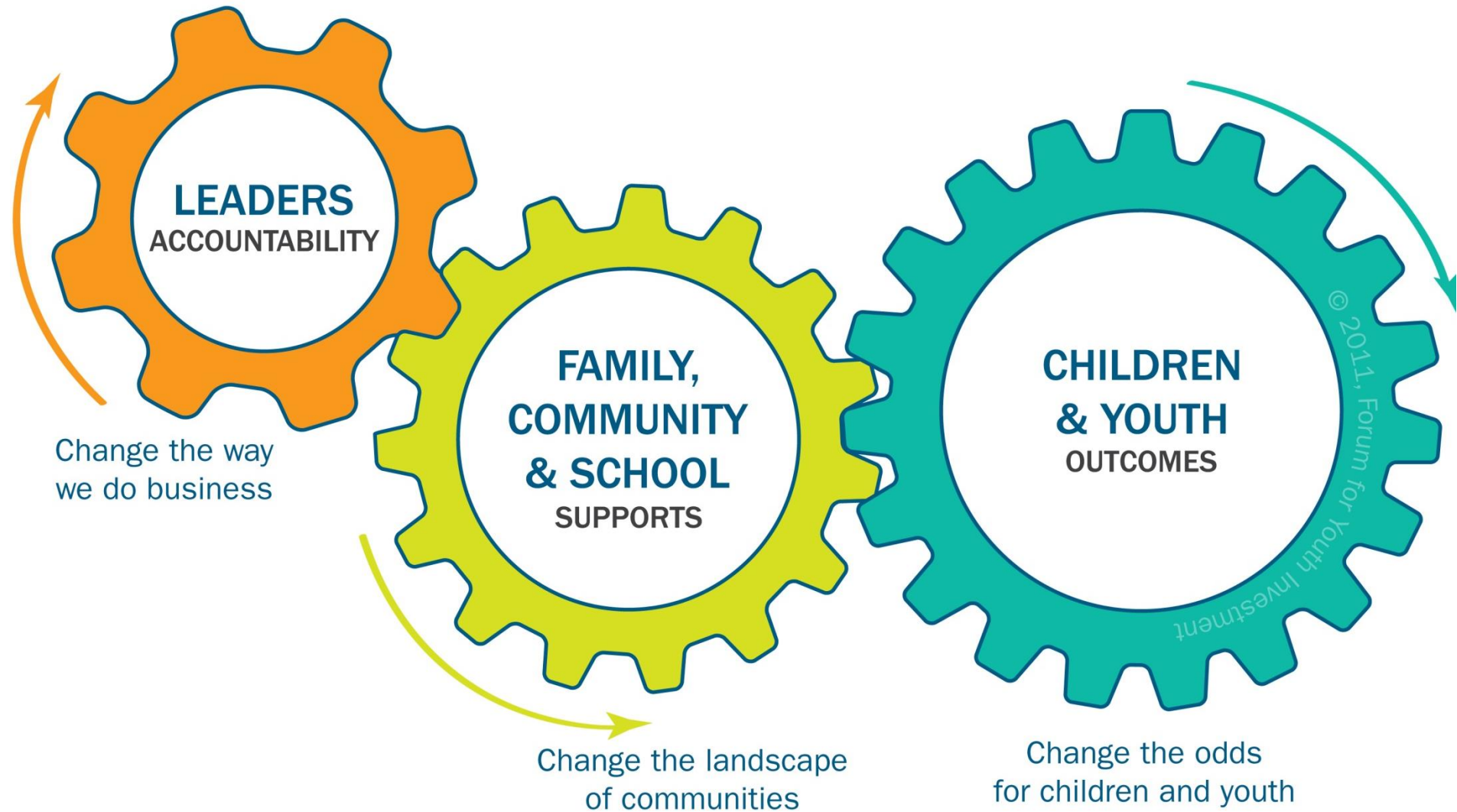


COLLABORATIONS

The Building Blocks for Change



Ready by 21 Theory of Change



Our Big Picture Approach

to Action Planning & Community Change

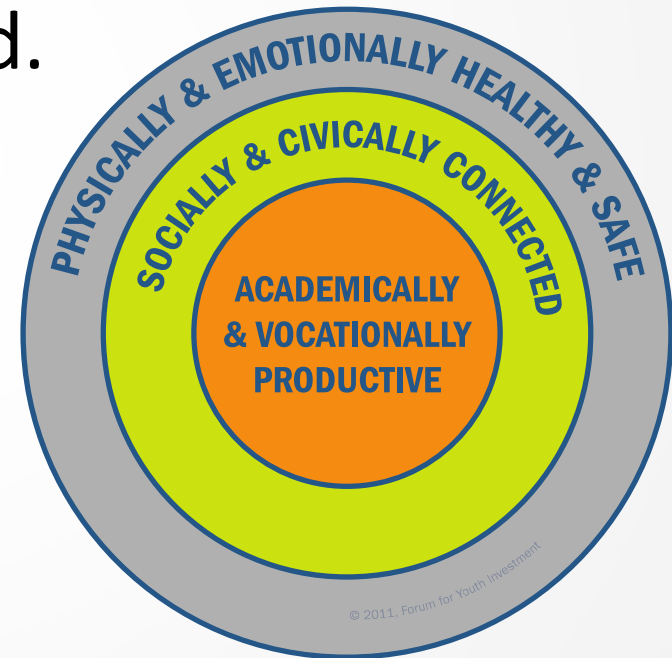


A Common Vision

- ✓ Actionable
- ✓ Summed up in a catchy phrase
- ✓ Connected to a tight, logically connected set of indicators used consistently to measure progress toward the vision
- ✓ Key words: ***“all” “thrive” “safe” “healthy” “nurturing” “enrich” “potential”***

A Starting Vision

All infants reach adulthood healthy and safe, academically and vocationally succeeding, and socially and civically engaged.





A Dashboard of outcomes and ages

		Pre-K 0–5	School-Age 6–10	Middle School 11–14	High School 15–18	Young Adults 19–24
<i>Ready for College</i>	Academically Successful					
<i>Ready for Work</i>	Vocationally Successful					
<i>Ready for Life</i>	Healthy					
	Safe					
	Socially Engaged					
	Civically Engaged					



Core Principles

ABOUT YOUTH

- Invest early and sustain investments over time.
- Support the whole child.
- Focus attention on those most in need.
- Build on strengths, don't just focus on problem-reduction.

ABOUT COMMUNITY SUPPORTS

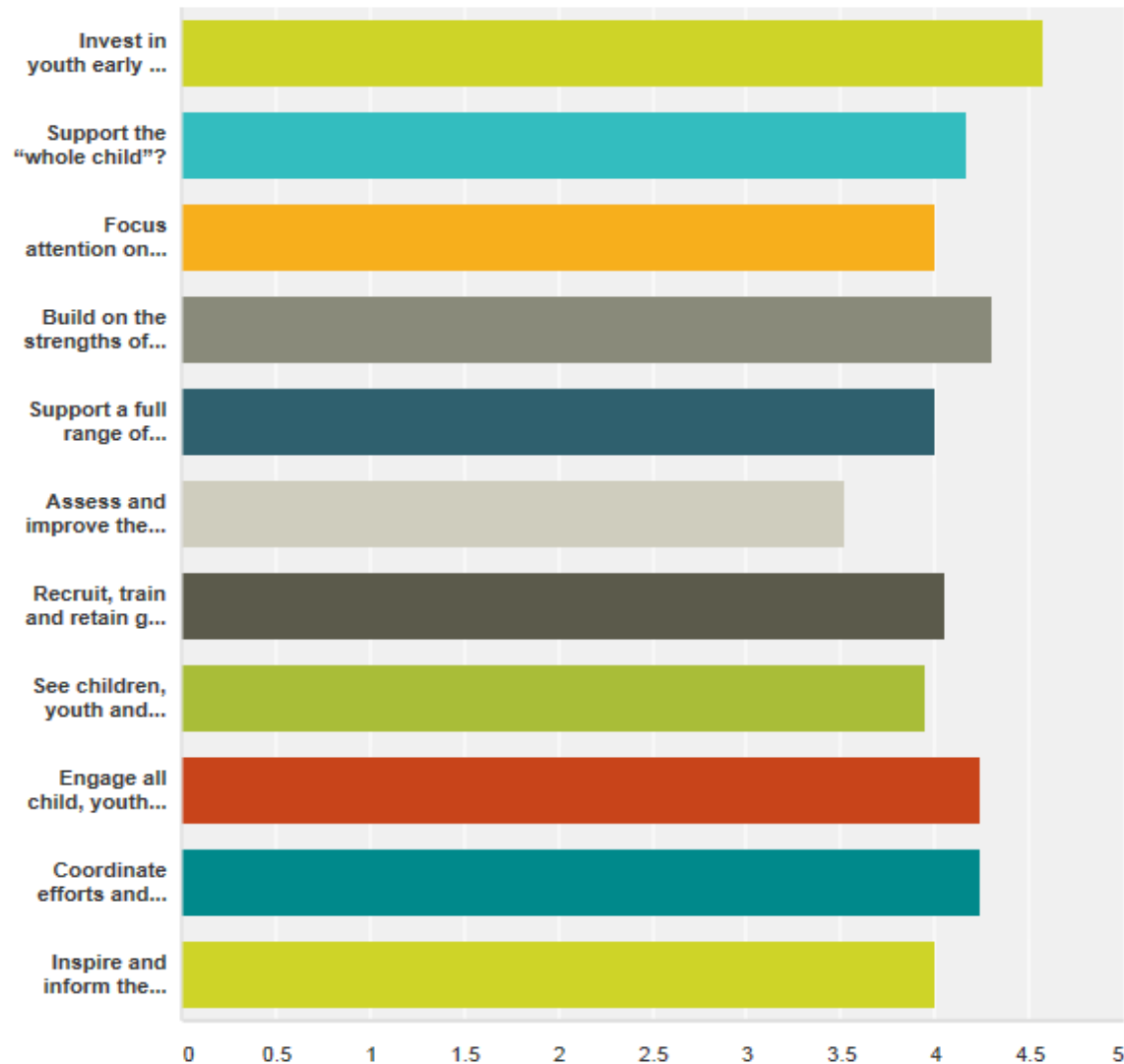
- Children don't grow up in programs, they grow up in families & communities.
- Support a full range of learning opportunities, formal/informal, in school and out.
- Assess and improve quality, reach and impact across all the places young people spend their time.
- Recruit, train and retain good staff.

ABOUT LEADERS

- See youth and families as change agents, not clients.
- Engage all sectors and stakeholders.
- Coordinate efforts, align resources.
- Inspire and inform the public.

Evaluate the following statements. How important is it that King County...

Answered: 21 Skipped: 0

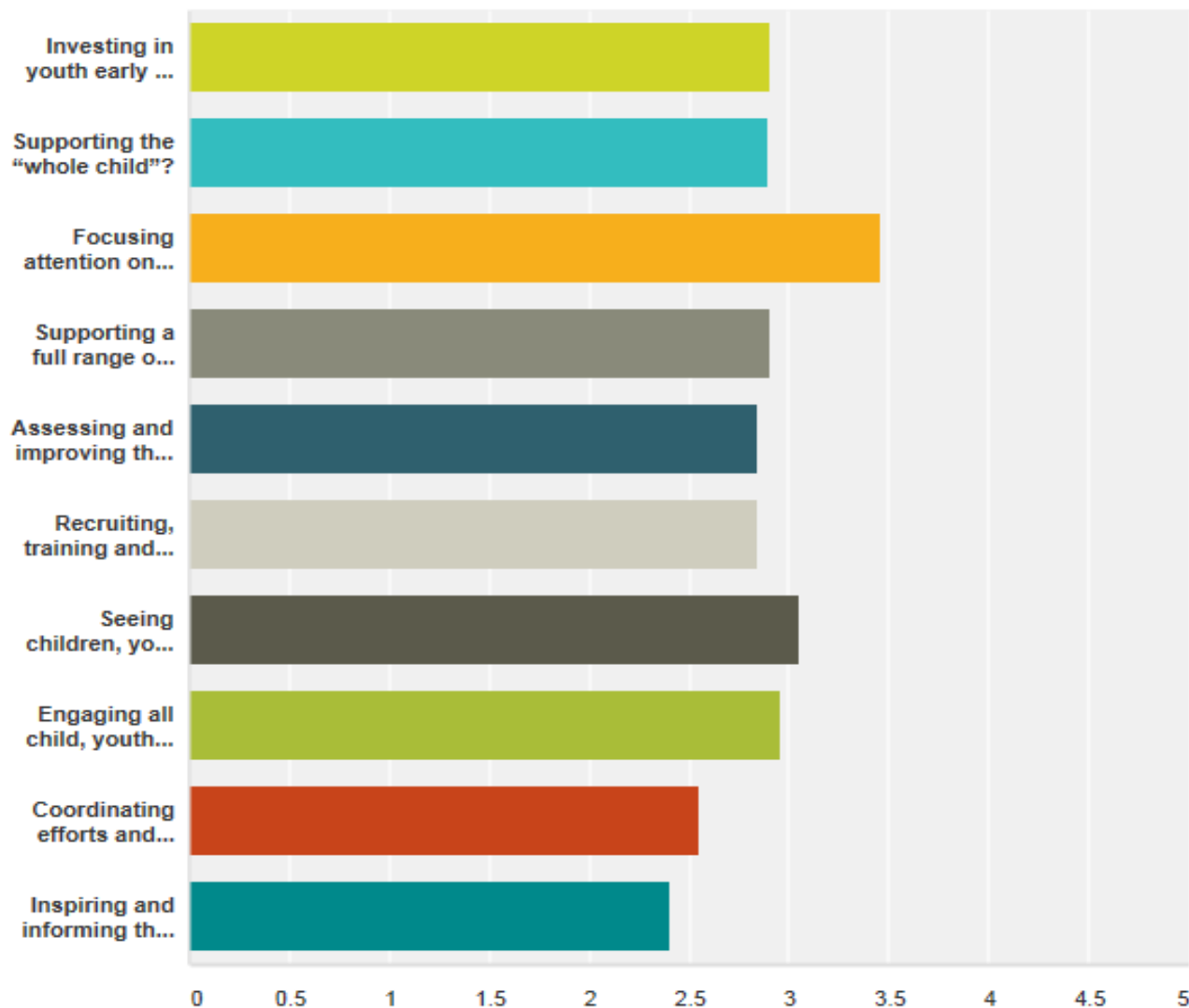


Evaluate the following statements. How is King County at...

Answered: 20 Skipped: 1



King County



Core Principles Exercise

- Turn to your neighbor and take a couple of minutes to discuss the core principle in front of you.
- What is the most compelling example of this principle at work in King County?
- Are there any important principles that have been left out?

Discussion/ Q & A

CONFIRM DECISIONS AND UNDERSTANDING

10 minute

BREAK

Getting into Strategy Teams

- They are time limited and will be revisited around November
- We are ONLY Taking Stock at this time NOT Targeting Action

Partnerships you participate in:



Committee to End Homelessness in King County	8
Youth and Family Services Associations	8
Road Map Project (Community Center for Education Results)	8
Youth Development Executives of King County	8
Mental Illness and Drug Dependency Implementation Plan (MIDD)	7
KC Comprehensive Plan to Prevent & End Youth and Young Adult Homelessness	7
KC Juvenile Justice Operational Master Plan	6
KC Equity and Social Justice Department Teams	5
KC Strategic Plan	5
Eastside Pathways	5
SOAR	5
KC Health and Human Services Transformation Plan	4
KC Alliance for Human Services	4
Seattle Youth Violence Prevention Initiative	4
United for Youth	3
Reclaiming Futures	3
TeamChild	3
KC Human Services Framework	2
Youth Engagement Practitioners	1