



**Seated** (from left): Peter von Reichbauer, **Council Vice Chair Jane Hague**, **Council Chair Larry Gossett**, and Larry Phillips. **Standing** (from left): Bob Ferguson, Joe McDermott, Julia Patterson, Reagan Dunn, and Kathy Lambert.

As your Metropolitan King County Council, we oversee the second largest government and the most populous county in Washington State. With 1.93 million residents, King County is the 14th largest county in the United States in terms of population. Coincidentally, there are more people living in King County than 14 states! At 2,134 square miles, the county covers more territory than the states of Rhode Island and Delaware.

Our dedicated employees provide quality regional services every day to county residents. We are also the local government for the 254,000 people who live in the urban and rural unincorporated areas and provide services by contract to many of the county's 39 cities.

As the legislative branch of county government, the Council sets policies, enacts laws, and adopts budgets that guide an array of services for this region, including:

- the criminal justice system of prosecutors and public defenders, District and Superior Courts, juvenile detention and adult jails;
- the King County Sheriff's Office, which directly serves residents of unincorporated areas and contracts with many cities to provide police protection;

- public health and human services;
- Metro Transit bus service and county roads;
- wastewater treatment and solid waste management;
- regional parks, open space and trails; and
- elections, records, and licensing.

The nine members of the King County Council each represent a geographic district of about 214,000 residents. Councilmembers are elected on a non-partisan basis and serve four-year terms.

The Council has four standing committees that oversee specific government functions and a Committee of the Whole that includes all Councilmembers.

Councilmembers also work closely with elected officials from local jurisdictions on three regional committees that address common interests in matters of policy, transit, and water quality.

Every year, the Council reviews every ordinance, motion, and budget to ensure that county government operates in a cost-effective and efficient manner.

Get agendas, minutes, and meeting videos online at:  
[www.kingcounty.gov/council](http://www.kingcounty.gov/council)

## Message from the Council Chair



**Larry Gossett**  
Council Chair

I am honored to chair the King County Council for a second year, and I look forward to working with my colleagues to serve the nearly two million residents of our diverse county.

In 2012, the King County Council will continue its efforts to deliver critically needed regional services in

the face of shrinking revenues. Budget cuts at both the federal and state levels add to the challenge of this task.

How do we maintain our state mandated responsibility to fund public safety and still provide an adequate

human services safety net? How can we maintain the infrastructure that will play a key role in any economic revival? What steps can be taken to encourage economic recovery and help working families in our region?

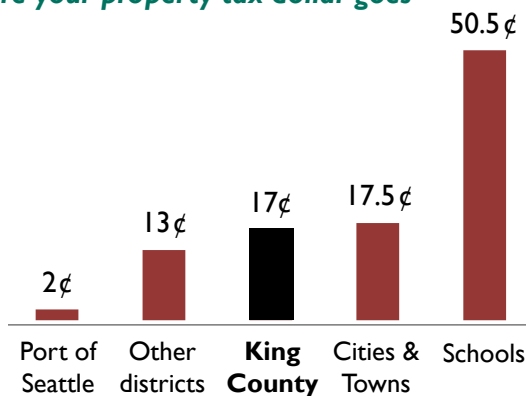
You play a vital role in the decisions we need to make this year. Please feel free to email or call me or your Councilmember with your needs and concerns. We wish to address the issues you believe are important to county government in the months to come.

A handwritten signature in blue ink that reads "Larry Gossett".

*Council Chair and Councilmember, District Two*

## Understanding the county budget

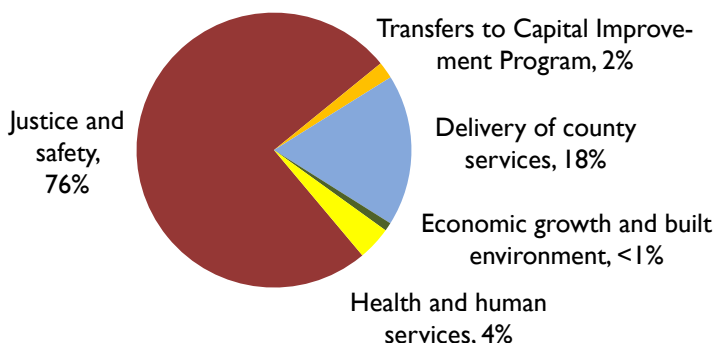
### Where your property tax dollar goes



The county budget is composed of two types of funds: dedicated funds and the general fund. Dedicated funds are the largest portion at 88% of the total budget. By law, these funds are restricted to specific purposes, such as transit, sewage treatment, and voter-approved programs.

The discretionary portion of the county budget is the General Fund, which amounts to 12% of the total budget. These funds pay for critical day-to-day services not supported by other revenues. Over three quarters of the General Fund (76%) pays for criminal justice and public safety, as mandated by the State. The remainder must fund other services, such as Elections and human services (see pie chart).

### General fund expenditures for 2012

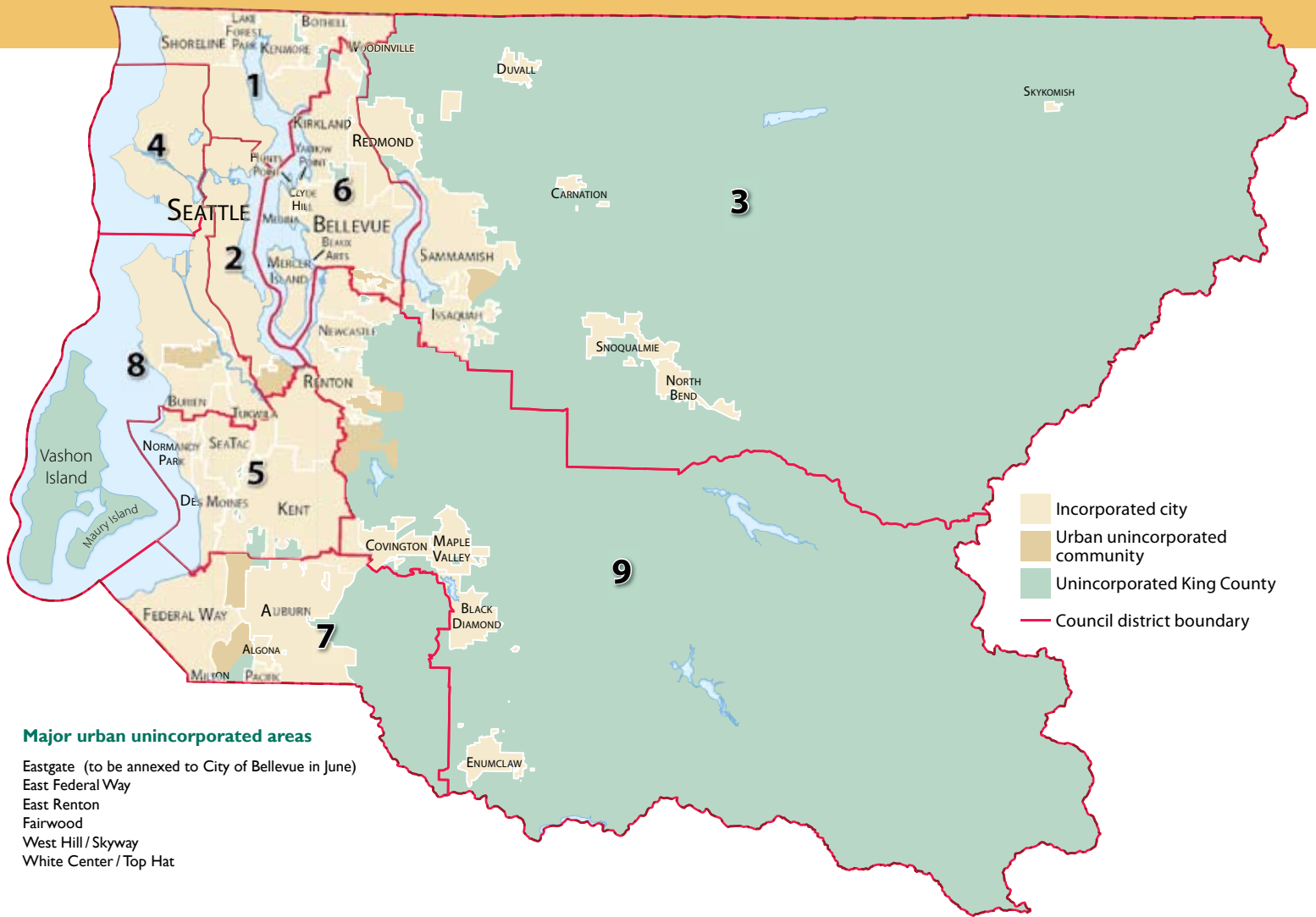


The General Fund is supported mostly by property tax, sales tax, and fees. By law, the County collects property tax on behalf of all taxing districts within the county. However, the County receives only 17 cents of every property tax dollar, with the rest going to other agencies (see bar graph). Similarly, King County receives less than one cent of the 9.5 cents sales tax per dollar collected in most of the county.

Since Washington State enacted the one percent cap on property tax increases in 2002, counties across Washington State have faced a gap between revenue and the cost of providing services. This structural gap has resulted in the county budget being cut by \$384 million during the past decade. The projected deficit for 2013 is \$20 million.

For more information, please visit  
[www.kingcounty.gov/council/budget](http://www.kingcounty.gov/council/budget)

# King County's urban and rural landscape



## Major urban unincorporated areas

Eastgate (to be annexed to City of Bellevue in June)  
 East Federal Way  
 East Renton  
 Fairwood  
 West Hill / Skyway  
 White Center / Top Hat

## Contact information

The King County Council meets Mondays at 1:30 p.m. on the 10th floor of the King County Courthouse. You can watch all meetings held in the chambers live on King County TV, cable channel 22, and online at our Web site. Agendas, minutes, and archived video of past meetings are also available online at [www.kingcounty.gov/council](http://www.kingcounty.gov/council).

### Mailing address

Metropolitan King County Council  
 King County Courthouse  
 516 Third Avenue, 12th Floor  
 Seattle, WA 98104-3272

### Telephone

(206) 296-1000, Toll-free: (800) 325-6165  
 Fax: (206) 296-0198  
 TTY/TDD: (206) 296-1024

### Online

Web: [www.kingcounty.gov/council](http://www.kingcounty.gov/council)  
 Social media: Facebook, Twitter

### Clerk of the Council

E-mail: [anne.noris@kingcounty.gov](mailto:anne.noris@kingcounty.gov)  
 Telephone: (206) 296-0364

### Which Council district do I live in?

Enter your address at  
[www.kingcounty.gov/council/councilmembers](http://www.kingcounty.gov/council/councilmembers)

Dist.	Councilmember	Phone	E-mail
1	Bob Ferguson	296-1001	<a href="mailto:bob.ferguson@kingcounty.gov">bob.ferguson@kingcounty.gov</a>
2	Larry Gossett	296-1002	<a href="mailto:larry.gossett@kingcounty.gov">larry.gossett@kingcounty.gov</a>
3	Kathy Lambert	296-1003	<a href="mailto:kathy.lambert@kingcounty.gov">kathy.lambert@kingcounty.gov</a>
4	Larry Phillips	296-1004	<a href="mailto:larry.phillips@kingcounty.gov">larry.phillips@kingcounty.gov</a>
5	Julia Patterson	296-1005	<a href="mailto:julia.patterson@kingcounty.gov">julia.patterson@kingcounty.gov</a>
6	Jane Hague	296-1006	<a href="mailto:jane.hague@kingcounty.gov">jane.hague@kingcounty.gov</a>
7	Peter von Reichbauer	296-1007	<a href="mailto:pete.vonreichbauer@kingcounty.gov">pete.vonreichbauer@kingcounty.gov</a>
8	Joe McDermott	296-1008	<a href="mailto:joe.mcdermott@kingcounty.gov">joe.mcdermott@kingcounty.gov</a>
9	Reagan Dunn	296-1009	<a href="mailto:reagan.dunn@kingcounty.gov">reagan.dunn@kingcounty.gov</a>



# Committees and special governments

The King County Council reviews proposed legislation through a number of standing committees that oversee specific government functions. Councilmembers work closely with elected officials from local jurisdictions on regional committees that address common interests in policy, transit, and water quality. In addition, Councilmembers serve as the Board of Supervisors of two special-purpose governments, created under authority provided by the State Legislature.

## Council committees

### Committee of the Whole

Legislation and policy issues of interest to the entire Council.  
*First and third Monday at 9:30 a.m., and every Monday at 9:30 from mid-September through December*

**Chair:** Jane Hague

**Vice Chair:** Julia Patterson

**Members:** All Councilmembers

### Budget and Fiscal Management

Capital and operating appropriations. Oversight of annual county budget, including current revenue and expenses.  
*First and third Tuesday at 1:30 p.m.*

**Chair:** Joe McDermott

**Vice Chair:** Kathy Lambert

**Members:** Jane Hague, Julia Patterson, Larry Phillips

### Government Accountability, Oversight and Financial Performance

Accountability and oversight for efficiency, cost effectiveness, and performance improvement of county departments, programs, and financial policies.  
*Second and fourth Tuesday at 9:30 a.m.*

**Chair:** Bob Ferguson

**Vice Chair:** Peter von Reichbauer

**Members:** Larry Gossett, Kathy Lambert

### Law, Justice, Health and Human Services

Justice, public safety and health, human services, housing, and emergency management.  
*Second, fourth, and fifth Tuesday at 1:30 p.m.*

**Chair:** Kathy Lambert

**Vice Chair:** Larry Gossett

**Members:** Reagan Dunn, Bob Ferguson, Joe McDermott,

### Transportation, Economy and Environment

Growth management, economic development, environmental issues, parks, public transportation, and county road system.  
*First, third, and fifth Tuesday and last Wednesday of the month at 9:30 a.m.*

**Chair:** Larry Phillips

**Vice Chair:** Peter von Reichbauer

**Members:** Larry Gossett, Jane Hague, Kathy Lambert, Joe McDermott

## Regional committees

### Regional Policy

Countywide plans and policies on issues such as human services, solid waste, public health, and criminal justice.  
*Second Wednesday at 3:00 p.m.*

**Chair:** Peter von Reichbauer

**Vice Chair:** Auburn Mayor Pete Lewis

**Members:** Bob Ferguson, Kathy Lambert

**Suburban Cities Association Members:** Auburn Mayor Pete Lewis, Federal Way Councilmember Dini Duclos, Redmond Mayor John Marchione, Snoqualmie Mayor Matt Larson

**City of Seattle Members:** Councilmember Sally Clark, Councilmember Mike O'Brien

### Regional Transit

Countywide plans and policies pertaining to King County Metro Transit services and facilities.  
*Third Wednesday at 3:00 p.m.*

**Chair:** Reagan Dunn

**Vice Chair:** Kirkland City Councilmember Bob Sternoff

**Members:** Julia Patterson, Joe McDermott

**Suburban Cities Association Members:** Issaquah City Councilmember Fred Butler, Renton City Councilmember Marcie Palmer, Federal Way City Councilmember Jeanne Burbidge, Burien Councilmember Joan McGilton, Shoreline Councilmember Chris Eggen, Redmond City Councilmember Kimberly Allen, Algona Mayor Dave Hill

**City of Seattle Members:** Councilmember Sally Bagshaw, Councilmember Tom Rasmussen

### Regional Water Quality

Plans and policies for construction, operation, and financing of wastewater treatment facilities; other water quality concerns.  
*First Wednesday at 3:00 p.m.*

**Chair:** Larry Phillips

**Vice Chair:** Bellevue City Councilmember Don Davidson

**Members:** Reagan Dunn, Larry Gossett

**Suburban Cities Association Members:** Black Diamond Councilmember Craig Goodwin, Auburn City Councilmember Bill Peloza, Shoreline City Councilmember Doris McConnell

**Sewer District Members:** Cedar River Water/Sewer District Commissioner Walter Canter, Southwest Suburban Sewer District Commissioner William Tracy

**City of Seattle Members:** Councilmember Jean Godden, Councilmember Sally Bagshaw

## Special-purpose governments

### King County Ferry District

*Fourth Monday of January, April, July, and October at 1:30 p.m.*  
[www.kingcountyferries.org](http://www.kingcountyferries.org)

### King County Flood Control District

*Second Monday of January, April, July, and October at 1:30 p.m.*  
[www.kingcountyfloodcontrol.org](http://www.kingcountyfloodcontrol.org)