



City of Sammamish Police Services Report

2008 ANNUAL DATA REPORT



Prepared by: The Research, Planning and Information Services Unit
of the King County Sheriff's Office

CITY OF SAMMAMISH

MAYOR

Don Gerend

DEPUTY MAYOR

Jack Barry

COUNCILMEMBERS

Jack Barry

Mark Cross

Lee Felling

Don Gerend

Kathy Huckabay

Michele Petitti

Nancy Whitten

CITY MANAGER

Ben Yazici

CHIEF OF POLICE SERVICES

Chief Brad Thompson

CITY OF SAMMAMISH POLICE SERVICES REPORT

2008 ANNUAL REPORT

GLOSSARY OF TERMS	1 - 2
CITY MAP	3
CITY CRIME SUMMARY	4
PART 1 AND 2 OFFENSES BY PATROL DISTRICTS	5
LARCENIES BY PATROL DISTRICTS	6
ADULT AND JUVENILE CHARGES, ARRESTS, CITATIONS	7
DISPATCHED CALLS FOR SERVICE	8
RESPONSE TIMES	8
TRAFFIC ENFORCEMENT ACTIVITY	9
Traffic Activity	
Traffic Accident Investigation	
Traffic Complaint Investigation	

GLOSSARY OF TERMS

Adult Arrests

An arrest is counted every time an adult is cited for a criminal offense or booked. More specifically:

1. It includes all adult bookings, plus
2. All adult citations which are classified as criminal non-traffic.
3. When an adult is both cited and booked, it is only counted once.

Cases Cleared /Clearance

The solving of an offense by arrest, or in some circumstances, by exceptional means (the suspect died, is imprisoned on another charge, victim refuses to testify, etc.).

CASE CLOSURE DEFINITIONS

Cleared by Arrest:

A case can be closed by arrest when at least one suspect is positively identified and charges are recommended to the Prosecuting Attorney's Office. This closure does not require physical booking into a jail or juvenile detention facility. It also does not require the charging of all suspects, if there are multiple suspects in the crime. This category includes criminal citations into district and municipal courts for misdemeanors and felony filings into Superior Court, as well as all filings into Juvenile Court.

Exceptional Clearance:

A case can be closed "exceptional" if it can be established that a crime has been committed and the identity of a suspect is positively confirmed, but due to circumstances beyond our control, no charges are filed. An example of this type of closure is a case in which the victim declines to assist in prosecution. Another example is when another police agency files charges on a related crime stemming from the same incident. (Car stolen in King County, but suspect arrested out of the stolen car in Bellevue. Bellevue P.D. charges the suspect with possession of the stolen car. We close the stolen car case "exceptional.")

Unfounded:

Cases are closed as "unfounded" when the investigation reveals that no crime has been committed. An example would be the report of a theft by one party that is determined to be a false report by interviewing other independent witnesses

Administrative Clearance:

This clearance is used primarily to close non-criminal police investigations like found property. For instance, if a citizen finds and turns over to police a wallet. Investigation reveals who the owner of the wallet is and the item is returned to that person.

Inactive:

This category is used when all investigative leads are exhausted and the case can not be closed by any of the above classifications.

Dispatched Calls for Service

This includes calls received in the Communications Center which result in one or more patrol cars being dispatched.

Domestic Violence

Domestic Violence is a subcategory to other crimes. Virtually any crime can be classified as domestic violence. In the State of Washington, Domestic Violence is defined as a crime of violence against the person or property of a spouse, former spouse, persons related by blood or marriage, persons who have a child in common, former/current roommates, persons who have or had a dating relationship, and persons related to the suspect by the parent-child (biological or legal) relationship. In some cases, the age of the victim or suspect may determine whether or not the legal definition above is met.

Part I Offenses

This category is commonly known as the "Crime Index." Crimes include criminal homicide (which includes murder and non-negligent manslaughter; but excludes deaths by negligence, attempts to kill, suicides, accidental deaths, justifiable homicide and traffic fatalities), forcible rape, robbery, aggravated assault (which excludes simple assaults), burglary, larceny-theft, motor vehicle theft and arson.

Violent Crimes (Part 1)

These are a subclassification of Part I Offenses which encompass murder and non-negligent manslaughter, rape, robbery and aggravated assault.

Part II Offenses

This category includes all other crime classifications outside those defined as Part I. Crimes include other assaults (simple), forgery and counterfeiting, fraud, embezzlement, stolen property (buying, receiving and/or possessing), vandalism, weapons (carrying, possessing, etc.), prostitution and commercialized vice, sex offenses (except forcible rape, prostitution or commercial vice...i.e. statutory rape, indecent exposure, etc.), drug violations, gambling, offenses against the family and children, driving under the influence, liquor violations, drunkenness, disorderly conduct, etc.

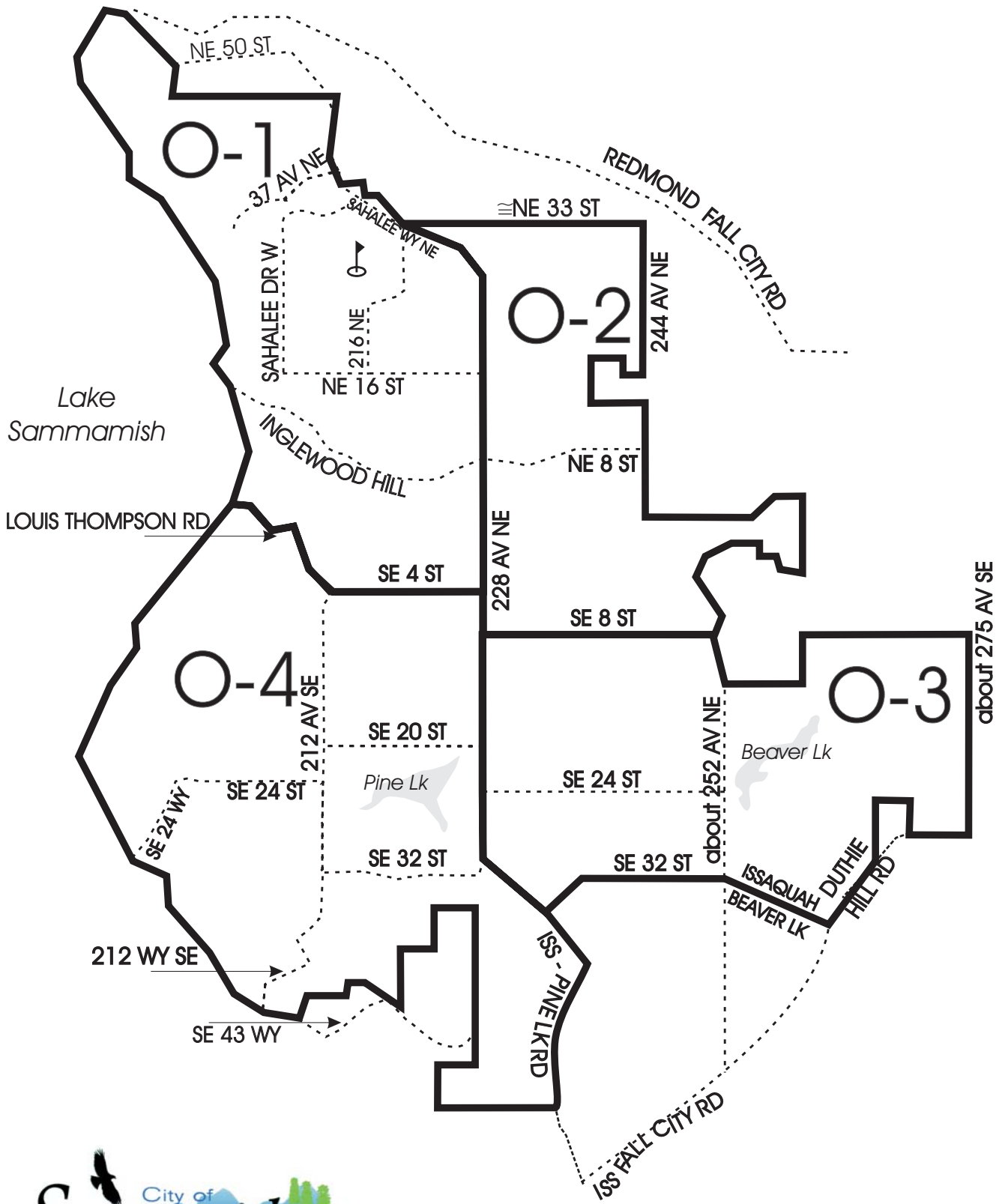
Response Times/Priorities

Priority X - Critical Dispatch. This category is used for those calls that pose an obvious threat to the safety of persons. Examples include shootings, stabbings and in-progress crimes such as robberies or burglaries where the possibility of a confrontation between a victim and suspect exists.

Priority 1 - Immediate Dispatch. This category is used for those calls that require immediate police action. Examples include silent alarms, injury traffic accidents, in-progress crimes or crimes that have just occurred where a suspect may still be in the immediate area.

Priority 2 - Prompt Dispatch. This category is used for those calls that could escalate to a more serious degree if not policed quickly. Examples include verbal disturbances and blocking traffic accidents.

Priority 3 - Routine Dispatch. This category is used for those calls where response time is not a critical factor. Examples include burglaries and larcenies that are not in progress, audible alarms, or other routine reports.



**City of Sammamish
Patrol Districts**

City of Sammamish

2008 Annual Report

CRIME SUMMARY

	2007	2008	Percent Change	Crime Rate	Total 2008 Cases Closed
Part I Offenses					
Criminal Homicide	0	0	N/A	0.00	0
Forcible Rape (incl. Attempts)	2	6	200.0%	0.15	0
Robbery	2	3	50.0%	0.07	0
Aggravated Assault	4	9	125.0%	0.22	2
Burglary, Commercial	18	15	-16.7%	0.37	0
Burglary, Residential	125	88	-29.6%	2.17	3
Larceny, over \$250	243	167	-31.3%	4.12	7
Larceny, under \$250	143	140	-2.1%	3.45	8
Vehicle Theft	21	12	-42.9%	0.30	2
Arson	7	4	-42.9%	0.10	1
Total Part I Offenses	565	444	-21.4%	10.95	23
Total Part II Offenses	777	709	-8.8%	17.48	57

NOTE:

The crime rate is calculated on the basis of 1,000 people (i.e., number of crimes per 1,000 people). The population is 40,550.

ACTIVITY SUMMARY

	2007	2008	Percent Change
Dispatched calls for service	3,797	3,695	-2.7%
Adult charges/arrests	311	254	-18.3%
Juvenile charges/arrests	97	74	-23.7%
Traffic enforcement	1,347	840	-37.6%
Officers assaulted	0	0	N/A
Total gang-related incidents	8	4	-50.0%
Total domestic violence related incidents	131	114	-13.0%
Hate crimes/malicious harassment reports	1	0	-100.0%

City of Sammamish

2008 Annual Report

Part One Offenses by Patrol District

	Sammamish				Total
	O1	O2	O3	O4	
Criminal Homicide	0	0	0	0	0
Rape	2	1	0	2	5
Child Rape	0	1	0	0	1
Attempted Rape	0	0	0	0	0
Robbery, Highway	1	0	2	0	3
Robbery, Commercial	0	0	0	0	0
Robbery, Gas Station	0	0	0	0	0
Robbery, Chain Store	0	0	0	0	0
Robbery, Residence	0	0	0	0	0
Robbery, Bank	0	0	0	0	0
Robbery, Misc.	0	0	0	0	0
Robbery, Carjack	0	0	0	0	0
Assault, Firearm	0	0	0	0	0
Assault, Knife	0	0	0	0	0
Assault, ODW	1	1	1	0	3
Assault, Hands	1	1	4	0	6
Commercial Burglary, FE	0	3	4	0	7
Commercial Burglary, NF	2	1	2	1	6
Commercial Burglary, ATT	0	0	1	1	2
Residential Burglary, FE	8	4	4	12	28
Residential Burglary, NF	18	8	14	15	55
Residential Burglary, ATT	1	1	0	3	5
Larceny, +\$250	39	32	58	36	165
Larceny, -\$250	26	49	47	18	140
Auto Theft	4	0	3	3	10
Truck-Bus Theft	0	0	0	0	0
Other Vehicle Theft	0	0	0	2	2
Theft Boat/RV	1	0	0	1	2
Arson Confirmed	2	0	1	1	4
Total	106	102	141	95	444

Part Two Offenses by Patrol District

	Sammamish				Total
	O1	O2	O3	O4	
Assault Fourth	12	18	17	15	62
Total Forgery/Fraud	45	27	38	27	137
Stolen Property	0	1	0	1	2
Vandalism	63	51	60	32	206
Weapons Violations	0	1	1	0	2
Commercial Vice	0	0	0	0	0
Total Sexual Offenses	9	0	7	2	18
Gambling	0	0	0	0	0
Total Family/Juvenile	21	15	19	27	82
DWI	4	8	0	4	16
Liquor Violations	2	2	4	1	9
Disorderly Conduct	0	1	0	0	1
Kidnapping	0	0	0	0	0
Trespass	3	5	7	2	17
Opium, coke, etc.	1	0	0	0	1
Marijuana	0	1	0	0	1
Synthetic Narcotics	0	0	0	0	0
Other Narcotics	0	0	0	0	0
Hate Crimes	0	0	0	0	0
Viol. of Court Orders (Misd)	6	4	2	2	14
Viol. of Court Orders (Felony)	0	0	0	0	0
All other	35	25	47	34	141
Total	201	159	202	147	709

City of Sammamish

2008 Annual Report

Larcenies by Patrol District

	Sammamish				Total
	O1	O2	O3	O4	
Auto Parts & Accessories	3	6	4	1	14
Bicycles	4	3	2	0	9
Coin Operated Machine Device	0	0	0	0	0
Gas	0	0	0	0	0
Non-specific Category	16	30	24	7	77
Pickpocket	0	0	1	0	1
Purse Snatch	0	0	1	0	1
Shoplifting	0	15	10	0	25
Taken from Auto	36	17	50	37	140
Taken from Building	8	10	12	10	40
Total	67	81	104	55	307

City of Sammamish

2008 Annual Report

ADULT AND JUVENILE CHARGES, ARRESTS, AND CITATIONS

	Adult Felony	Adult Misdemeanor	Juvenile Felony	Juvenile Misdemeanor	Total Adults and Juveniles
Criminal Homicide	0	0	0	0	0
Negligent Manslaughter	0	0	0	0	0
Forcible Rape	0	0	0	0	0
Robbery	0	0	0	0	0
Aggravated Assault	4	0	0	0	4
Burglary	2	0	0	0	2
Larceny	5	7	0	22	34
Vehicle Theft	1	0	0	0	1
Assault, Fourth	0	48	0	8	56
Arson	0	0	0	0	0
Counterfeiting/Forgery	4	0	2	0	6
Fraud	6	0	0	0	6
Embezzlement	0	0	0	0	0
Stolen Property	5	0	1	0	6
Vandalism	0	12	0	2	14
Weapons Violations	0	0	0	2	2
Prostitution - Vice	0	0	0	0	0
Sex Offense (No Rape)	0	0	0	0	0
Narcotics/Drug Violation	0	1	0	1	2
Marijuana	0	1	0	3	4
Gambling, Other	0	0	0	0	0
DWI	0	18	0	1	19
Liquor Violation	0	45	0	21	66
Disorderly Conduct	0	2	0	0	2
Other (except Traffic)	2	20	1	4	27
Traffic	1	70	0	6	77
TOTAL	30	224	4	70	328

NOTE:

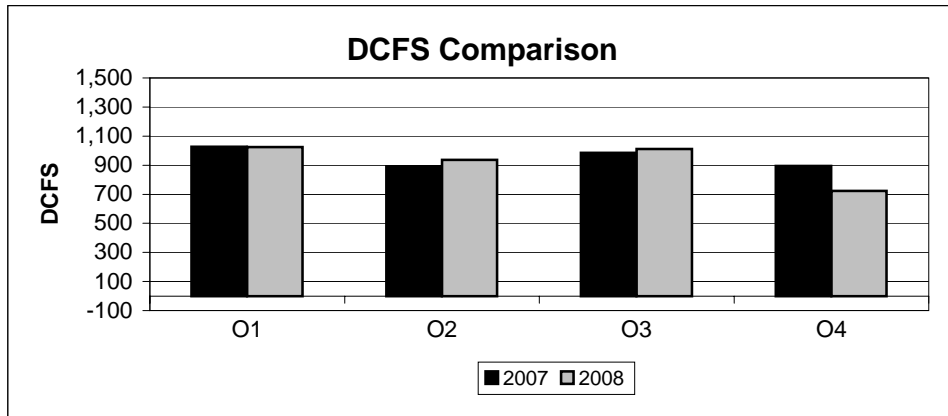
Charges include all adults and juveniles booked, cited and charged in absentia. Charges do not include persons that are booked on warrants each quarter.

City of Sammamish

2008 Annual Report

Dispatched Calls for Service By Patrol District

District	2007	2008
O1	1,026	1,025
O2	892	936
O3	985	1,011
O4	894	723
TOTAL	3,797	3,695



Response Times

Priority	Avg Time in Mins.
X	3.67
1	9.62
2	14.26
3	27.70

City of Sammamish

2008 Annual Report

Traffic Enforcement Activity

Violation	Patrol	Special Operations	TOTAL
Abandoned Vehicle	88	0	88
Accident, DUI	6	0	6
Accident, Injury	60	0	60
Accident, Non-injury	149	0	149
Accident, Fatal	0	0	0
D.U.I.	10	0	10
Physical Control	1	0	1
Hit & Run, Occupied Non-injury	8	0	8
Hit & Run, Unoccupied	33	0	33
Hit & Run, Injury	2	0	2
Incident, NSC (Other than accident)	3	0	3
Motorcycle Complaint	0	0	0
Negligent Driving	4	0	4
Other Moving Violation	44	0	44
Defective Equipment	2	0	2
Other Non-moving Violation	4	0	4
Off Road Vehicle/ATV Violation	1	0	1
Parking Violation	80	0	80
Pedestrian/Bicycle Violation	0	0	0
Reckless Driving	2	0	2
Speeding (Pace)	6	0	6
Speeding (Radar)	133	0	133
Traffic Complaint Investigation	89	0	89
Attempting to Elude (Felony Flight)	1	0	1
Control (Other than Fire)	0	0	0
Driving While License Revoked/Suspended	38	0	38
Operator's License Violations, Other	15	0	15
Seatbelt Violation	10	0	10
Vehicle License Violations	51	0	51
TOTAL	840	0	840

Summary of Traffic Activity

	2008	2007	Percent Change
DUI	16	28	-42.9%
Moving/Hazardous	636	1,028	-38.1%
Non-moving/Compliances	188	291	-35.4%
TOTAL	840	1,347	-37.6%

Traffic Accident Investigations

	2008	2007	Percent Change
Accident, DUI	6	9	-33.3%
Accident, Injury	60	53	13.2%
Accident, Non-injury	149	145	2.8%
Accident, Fatal	0	0	N/A
Hit & Run, Occupied, Non-injury	8	5	60.0%
Hit & Run, Unoccupied	33	36	-8.3%
Hit & Run, Injury	2	1	100.0%

	2008	2007	Percent Change
Traffic Complaint Investigations	89	99	-10.1%

City of Sammamish Police Services Report
