

*THE WASHINGTON STATE BOUNDARY REVIEW BOARD  
FOR KING COUNTY*

*SPECIAL MEETING/PUBLIC HEARING*

*7:00 PM*

*Tuesday, October 20, 2009*

*DDES Hearing Room  
1000 Oakesdale Avenue SW  
Renton, WA*

**A G E N D A**

---

**I. WITNESS SIGN IN - 6:30 PM**

*It is from this list that witnesses are called to testify.*

**II. CALL TO ORDER - 7:00 PM**

*Claudia Hirschey, Chair*

**III. ROLL CALL**

**Robert Cook, Vice-Chair**

Van Anderson

Charles Booth

Sylvia Bushnell

A.J. Culver

Robert George

Lynn Guttman

John Holman

Roger Loschen

Michael Marchand

**IV. FILE NO. 2304 - CITY OF TUKWILA - TUKWILA SOUTH ANNEXATION**

6:30 PM Introduction of Exhibits

7:00 PM Introductory Comments on Hearing Procedures and Swearing in of Witnesses

7:15 PM Proponent: Presentation by City of Tukwila (20 minutes)

- 7:35 PM Presentation by King County (20 minutes)
- 7:55 PM Government Jurisdictions (10 minutes)
- 8:05 PM General Testimony: Groups are limited to ten minutes and individuals have three minutes to speak
- Rebuttal: City of Tukwila (10 minutes)

V. *FILE NO. 2304 - City of Tukwila - Tukwila South Annexation, Board deliberation and direction to the Staff on Resolution and Hearing Decision*

VI. *ADJOURNMENT*

**BACKGROUND STATEMENT**

**The Boundary Review Board**

The Boundary Review Board was created in 1967 by the legislature in part to "...provide a method of guiding and controlling the growth of municipalities..." (RCW 36.93.010). There are seventeen such boards in the State of Washington.

The Board is a quasi-judicial, administrative body empowered to make decisions on such issues as incorporations, annexations, mergers, disincorporations, etc., by cities, towns, and sewer, water and fire districts. It can approve, deny, or modify a proposal. Board decisions are final unless appealed to the King County Superior Court. With an appeal the Court reviews the file, exhibits, transcript and the board decision, rather than conducting a new hearing.

Board members are residents of the County and serve for four-year terms. They are not allowed to hold other local government offices or jobs. Their compensation is \$50.00 per day for work on Board business. Members may not properly discuss proposals under their consideration outside of the public hearing (ex parte communications).

**Appearance of Fairness Doctrine**

In general, decision-makers such as Board members must not only be fair in their actions (i.e., have no conflicts of interest), but must also, to the ordinary citizen, appear to be free of any position or influence which would impair their ability to decide a case fairly. However, the State Supreme Court has held that if a person is of the opinion that a decision-maker is so impaired, that opinion must be stated at the first available opportunity.

## SUMMARY OF HEARING PROCEDURES

### Sign-in to Speak

A roster will be found on the speaker's podium. Those who wish to testify must sign in before witnesses are sworn. All speakers will be called from this list. If you sign in once, it is not necessary to do so at any continuation of the hearing.

### Exhibits

Please submit exhibits to staff for marking before the Call to Order. The Board must retain all exhibits until a decision is filed and the appeal period ends (ten days).

### Speakers

Please state your name and address for the benefit of the Court Reporter prior to testifying. When referring to an exhibit, please state the exhibit letter.

### Time Limits

If necessary, the Chair may employ a time limit of 3 minutes for individuals and 10 minutes for organized groups.

### Testimony

The Boundary Review Board Act requires the consideration of certain factors (see RCW 36.93.170) and specifies objectives the Board must seek to accomplish (see RCW 36.93.180). Testimony and evidence related to these factors and objectives will be the most effective.

### Cross-Examination

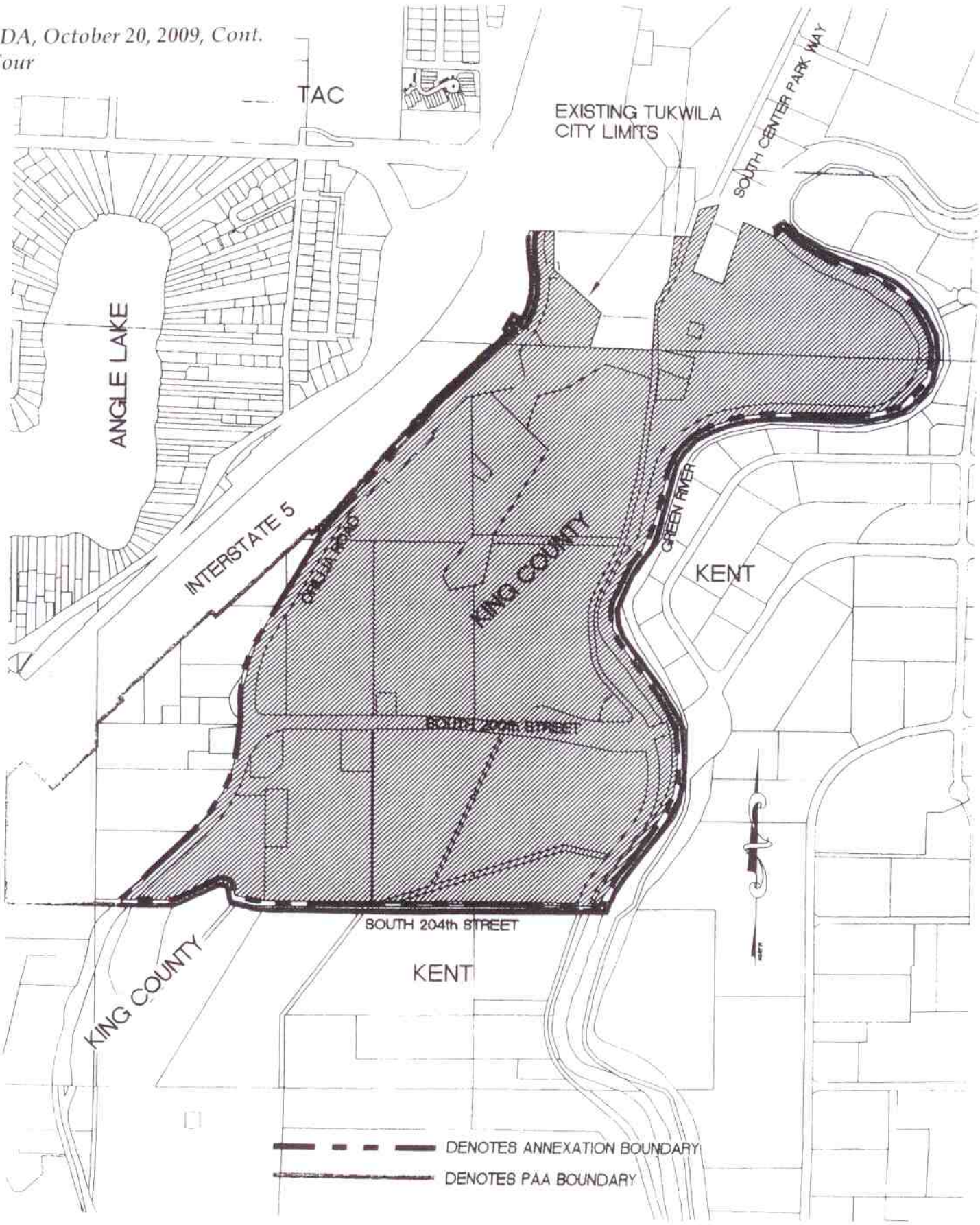
Witnesses generally may not question other witnesses or the Board. The Chair may allow cross-examination of expert witnesses under limited circumstances as described in the Board's Rules of Practice and Procedures.

### Rebuttal

The rebuttal shall be limited to 10 minutes. Rebuttal must be prefaced by a citation of the disputed testimony. Rebuttal may not include closing statements, a summary, or any additional information, unless such information is in answer to questions and issues raised in previous testimony.

# VICINITY MAP

AGENDA, October 20, 2009, Cont.  
Page Four



FILE NO. 2304 - CITY OF TUKWILA - TUKWILA SOUTH ANNEXATION

**RCW 36.93.170 Factors to be considered by board -- Incorporation proceedings exempt from state environmental policy act.** In reaching a decision on a proposal or an alternative, the board shall consider the factors affecting such proposal, which shall include, but not be limited to the following: (1) Population and territory; population density; land area and land uses; comprehensive plans and zoning, as adopted under chapter 35.63, 35A.63, or 36.70 RCW; comprehensive plans and development regulations adopted under chapter 36.70A RCW; applicable service agreements entered into under chapter 36.115 or 39.34 RCW; applicable interlocal annexation agreements between a county and its cities; per capita assessed valuation; topography, natural boundaries and drainage basins, proximity to other populated areas; the existence and preservation of prime agricultural soils and productive agricultural uses; the likelihood of significant growth in the area and in adjacent incorporated and unincorporated areas during the next ten years; location and most desirable future location of community facilities; (2) Municipal services; need for municipal services; effect of ordinances, governmental codes, regulations and resolutions on existing uses; present cost and adequacy of governmental services and controls in area; prospects of governmental services from other sources; probable future needs for such services and controls; probable effect of proposal or alternative on cost and adequacy of services and controls in area and adjacent area; the effect on the finances, debt structure, and contractual obligations and rights of all affected governmental units; and (3) The effect of the proposal or alternative on adjacent areas, on mutual economic and social interests, and on the local governmental structure of the county. The provisions of chapter 43.21C RCW, State Environmental Policy, shall not apply to incorporation proceedings covered by chapter 35.02 RCW. [1997 c 429 § 39; 1989 c 84 § 5; 1986 c 234 § 33; 1982 c 220 § 2; 1979 ex.s. c 142 § 1; 1967 c 189 § 17.] NOTES: Severability -- 1997 c 429: See note following RCW 36.70A.3201. Severability -- 1982 c 220: See note following RCW 36.93.100. Incorporation proceedings exempt from state environmental policy act: RCW 43.21C.220.

**RCW 36.93.180 Objectives of boundary review board.** The decisions of the boundary review board shall attempt to achieve the following objectives: (1) Preservation of natural neighborhoods and communities; (2) Use of physical boundaries, including but not limited to bodies of water, highways, and land contours; (3) Creation and preservation of logical service areas; (4) Prevention of abnormally irregular boundaries; (5) Discouragement of multiple incorporations of small cities and encouragement of incorporation of cities in excess of ten thousand population in heavily populated urban areas; (6) Dissolution of inactive special purpose districts; (7) Adjustment of impractical boundaries; (8) Incorporation as cities or towns or annexation to cities or towns of unincorporated areas which are urban in character; and (9) Protection of agricultural and rural lands which are designated for long term productive agricultural and resource use by a comprehensive plan adopted by the county legislative authority. [1989 c 84 § 6; 1981 c 332 § 10; 1979 ex.s. c 142 § 2; 1967 c 189 § 18.] NOTES: Severability -- 1981 c 332: See note following RCW 35.13.165. been adopted by the authorities governing the territory to be annexed and in force at the time of the decision. [1967 c 189 § 19.]

**WASHINGTON STATE BOUNDARY BOARD FOR KING COUNTY - MEMBERSHIP PROFILE:  
BOARD MEMBERS APPOINTED**

Name	Sex	Ethnicity	KC Dist.	Skill/Affiliation	Date 1st Appt.	Term Expires	Term #	Other
Evangeline Anderson	F	Caucasian	6	Real Estate Agent	02/1/01	01/31/13	3	Appointed by Governor
Charles Booth	M	Caucasian	7	Former Mayor of Auburn	02/01/03	01/31/11	2	Appointed by Cities of King County
Sylvia Bushnell	F	African-American	5	Community Volunteer; Retired Businesswoman;	01/31/09	01/31/13	1	Appointed by K.C. Executive
Robert Cook	M	Caucasian	8	Fire District Commissioner Business Owner	02/01/05	02/28/13	2	Special District
A. J. Culver	M	Caucasian	9	Municipal League Member; Accountant	02/01/01	01/31/13	3	Appointed by Cities of King County
Robert George	M	Caucasian	3	Retired Water District Commissioner	06/01/06	02/28/13	2	Special District
Lynn Guttman	F	Caucasian	2	Management Consultant	03/09/05	01/31/13	2	Appointed by K.C. Exec.
Claudia Hirschey	F	Caucasian	9	Former Newcastle City Council Member; Transportation Planning Engineer	02/01/03	01/31/11	2	Appointed by Cities of King County
John Holman	M	Caucasian	7	Retired as Captain of Port of Seattle Police Department; Community Volunteer	09/19/07	01/31/11	1	Appointed by K.C. Executive
Roger Loschen	M	Caucasian	1	Former Lake Forest Park Council member and Mayor	3/30/99	1/31/11	3	Appointed by Governor
Michael Marchand	M	Caucasian	6	Executive Public Relations	01/01/03	1/31/13	3	Appointed by Governor

Effective Date: January 2009

WASHINGTON STATE BOUNDARY REVIEW BOARD  
FOR KING COUNTY

**Evangeline Anderson**

- Appointed by Governor (term expires 01/31/13)
- Real Estate Instructor, Renton Technical College
- Real Estate Sales Person
- Director of National Association of Realtors
- Bellevue resident

**Charles Booth**

- Appointed by Mayors (term expires 01/31/11)
- Former Mayor of Auburn
- Retired Deputy Superintendent Auburn School District
- Suburban Cities Association Board
- Association of Washington Cities Board
- Washington State Municipal Research Council
- Auburn Resident

**Sylvia Bushnell**

- Appointed by King County Executive (term expires 01/31/13)
- Retired Businesswoman
- Former liaison to King County Records and Elections
- Seattle (West Hill) Resident

**Robert Cook (Chair-Elect)**

- Nominated by Special Districts (term expires 02/28/13)
- Former Official Special Purpose District
- Business Owner
- SeaTac resident

**A.J. Culver**

- Appointed by Mayors (term expires 01/31/13)
- Retired from The Boeing Co.
- Previous Mayor of Issaquah
- Board, Harborview Medical Center
- King County Elections Oversight Commission
- Bellevue Resident

**Robert George**

- Appointed by Special Purpose Districts (term expires 02/28/13)
- Retired Sewer District Commissioner
- Sammamish Resident

**Lynn Guttman**

- Appointed by King County Executive (term expires 01/31/13)
- Management Consultant
- Former Director of Municipal Public Works/Land Use Planning
- Seattle Resident

*AGENDA, October 20, Cont.*  
*Page Eight*

**Claudia Hirschey (Chair)**

- Appointed by Mayors (term expires 01/31/11)
- Transportation Planner/Engineer
- Former Member Newcastle City Council
- Member Institute of Transportation Engineers
- Board Member YMCA
- Newcastle Resident

**John Holman**

- Appointed by the King County Executive (term expires 01/31/11)
- Former Police Captain (Port of Seattle)
- Educator
- Auburn Resident

**Roger Loschen**

- Appointed by Governor (term expires 01/31/11)
- Former Mayor and City Council Member, City of Lake Forest Park
- Former Member of Growth Management Planning Council
- Retired Public Relations Executive and Counselor
- Lake Forest Park resident

**Michael Marchand**

- Appointed by Governor (term expires 01/31/13)
- Former Public Relations Officer for the Governor
- Microsoft – Health Solutions - Executive Director
- Bellevue resident

Effective Date: January 2009