
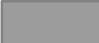





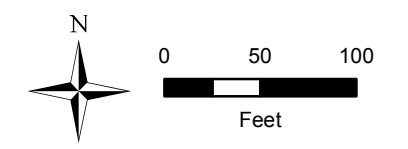


**2007 Wetland Categories
and Approximate Buffers
Brooks Village Plat - 114830
Portion of Section 11,
Township 23N, Range 4E, W.M.**

Note: Urban Zone designation offers the opportunity to reduce the wetland buffers (only wetland buffers) by 25 feet if you implement the BMPs in 21A.24.325 of county code. If the code provisions are met by a proposed development plan, wetlands A/B would have a 100 foot buffer and 15-foot BSBL.

Legend

-  Wetland Buffer
-  Standard Buffer
-  Potential Buffer
-  Wetland
-  Plat Line
-  Culvert
-  Parcels



**King County
GIS CENTER**

31 May 2007

