



**King County**

**Capital Planning and Development Section  
Parks CIP Unit**

Facilities Management Division, DES  
201 South Jackson, Room 700  
Seattle, Washington 98104

(206) 263-7285 FAX (206) 263-6217



September 22, 2010

Phil Segami  
WSDOT Northern Region  
15700 Dayton Ave. N.  
Seattle, WA 98133-9710

RE: East Lake Sammamish Master Plan Trail  
Wetlands Mitigation – Revision to Area of Potential Effects

Dear Mr. Segami,

This correspondence is intended to revise the Area of Potential Effects (APE), pursuant to 36 CFR 800.3 and to Section IA of the Programmatic Agreement for the East Lake Sammamish Master Plan Trail.

In anticipation of federal funding through the Federal Highway Administration, environmental documentation was prepared for the entire 11-mile East Lake Sammamish Trail corridor to comply with federal requirements, including Section 106 of the National Historic Preservation Act. FHWA has entered into a Programmatic Agreement to outline their continued Section 106 responsibilities for the project. Under that agreement a notification of the State Historic Preservation Officer (SHPO) by FHWA is required for revisions or additions to the APE. This letter is intended to assist in that notification.

Following the environmental review process, design and construction of the East Lake Sammamish Master Plan Trail will occur in the following phases (depending on budget availability):

1. Redmond Trail Segment (NE 70<sup>th</sup> Street in Redmond/City of Sammamish Border);
2. Issaquah Trail Segment (NW Gilman Blvd. to the Issaquah/City of Sammamish Border);
3. Sammamish Trail Segment (City of Sammamish/Redmond Border to City of Sammamish/Issaquah Border).

Design for the Redmond Trail Segment is complete and construction is scheduled to begin in 2011. Please note that the Redmond Trail Segment was designed and is being constructed without the use

East Lake Sammamish Master Plan Trail  
Revisions to the Area of Potential Effects  
September 22, 2010

of federal funds. However, King County is assuming that the terms of the Programmatic Agreement would still apply and is therefore submitting the revised APE for the Redmond Trail Segment through this correspondence. Revisions to the Area of Potential Effects for the Issaquah and Sammamish Trail Segments will be submitted at the appropriate times.

In regards to the construction of the Redmond Trail, King County plans to conduct wetlands mitigation on a parcel of land within Bear Creek Park, Redmond, Washington.

### **Project Location**

The East Lake Sammamish Master Plan Trail project is located on a former railbed along the east side of Lake Sammamish. The 11 mile trail extends from Redmond in the north to Issaquah in the south. To mitigate construction impacts to wetlands along the Redmond Segment of the East Lake Sammamish Master Plan Trail, King County will improve wetlands offsite on a parcel of land (Parcel No. 1225059261) within Bear Creek Park, located approximately ½ mile N/NE of Marymoor Park. The legal description of the parcel is the NE ¼ of Section 12, Township 25 North, Range 5 East, on the Redmond 7.5' series topographic map. Mitigation efforts will involve a portion of land measuring approximately 540' (165 m) long and 120' (37 m) wide (1.47 acres, 0.006 km<sup>2</sup>). The project parallels the east bank of Bear Creek, and runs perpendicular to Union Hill Road NE. Ground disturbance associated with the planting of vegetation will reach a depth of 2-ft. below ground surface. Staging activities will occur on the shoulder of Avondale Road NE to the east.

### **Project Description**

King County plans to conduct wetland mitigation tasks at an offsite location in order to mitigate impacts to wetlands during construction of the Redmond Trail Segment of the East Lake Sammamish Master Plan Trail. Activities will involve the planting of vegetation and seeds within a portion of land that parallels Avondale Road NE.

### **Area of Potential Effects (APE)**

This project will be conducted on King County Parcel No. 1225059261 which is owned by the City of Redmond. Mitigation efforts will involve a portion of land measuring approximately 540' (165 m) long and 120' (37 m) wide (1.47 acres, 0.006 km<sup>2</sup>). The project parallels the east bank of Bear Creek, and runs perpendicular to Union Hill Road NE. Ground disturbance associated with planting vegetation is planned to reach a depth of approximately 2-ft. (61 cm) below ground surface. Staging activities will occur on the shoulder of Avondale Road NE to the east; however, because staging and transport of material will occur on paved surfaces, no adverse effects are anticipated from these activities.

### **Historical and Archaeological Resource Concerns**

No recorded, reported or suspected cultural resources are within the revised APE. No buildings or structures needing evaluation are within the revised APE. Multiple archaeological and historic sites, including sites listed on the National Register of Historic Places, sites determined eligible for the National Register of Historic Places, and sites potentially eligible for the National Register of

East Lake Sammamish Master Plan Trail  
Revisions to the Area of Potential Effects  
September 22, 2010

Historic Places, are located within 1.0 mile of King County Parcel No. 1225059261. Within this 1.0 mile radius, prehistoric cultural remains have been encountered over multiple depths, ranging from near surface to deeply buried. The parcel is located along Bear Creek, less than 1.0 mile upstream of site 45-KI-839 (Bear Creek Site), which has produced in situ Late Pleistocene/Early Holocene stone tools.

**Previous Cultural Resources Investigations**

Approximately half of the revised APE was within the APE for the Bear Creek Trail Project. That older APE was intensively surveyed for cultural resources in 2005, including pedestrian survey and shovel probes (Earley 2005). No cultural materials were encountered during that survey. It is recommended that the survey of the revised APE be limited to the areas not investigated in 2005.

**Enclosures**

The following two enclosures are included with this letter;

1. APE Location Map;
2. APE Plan View Map.

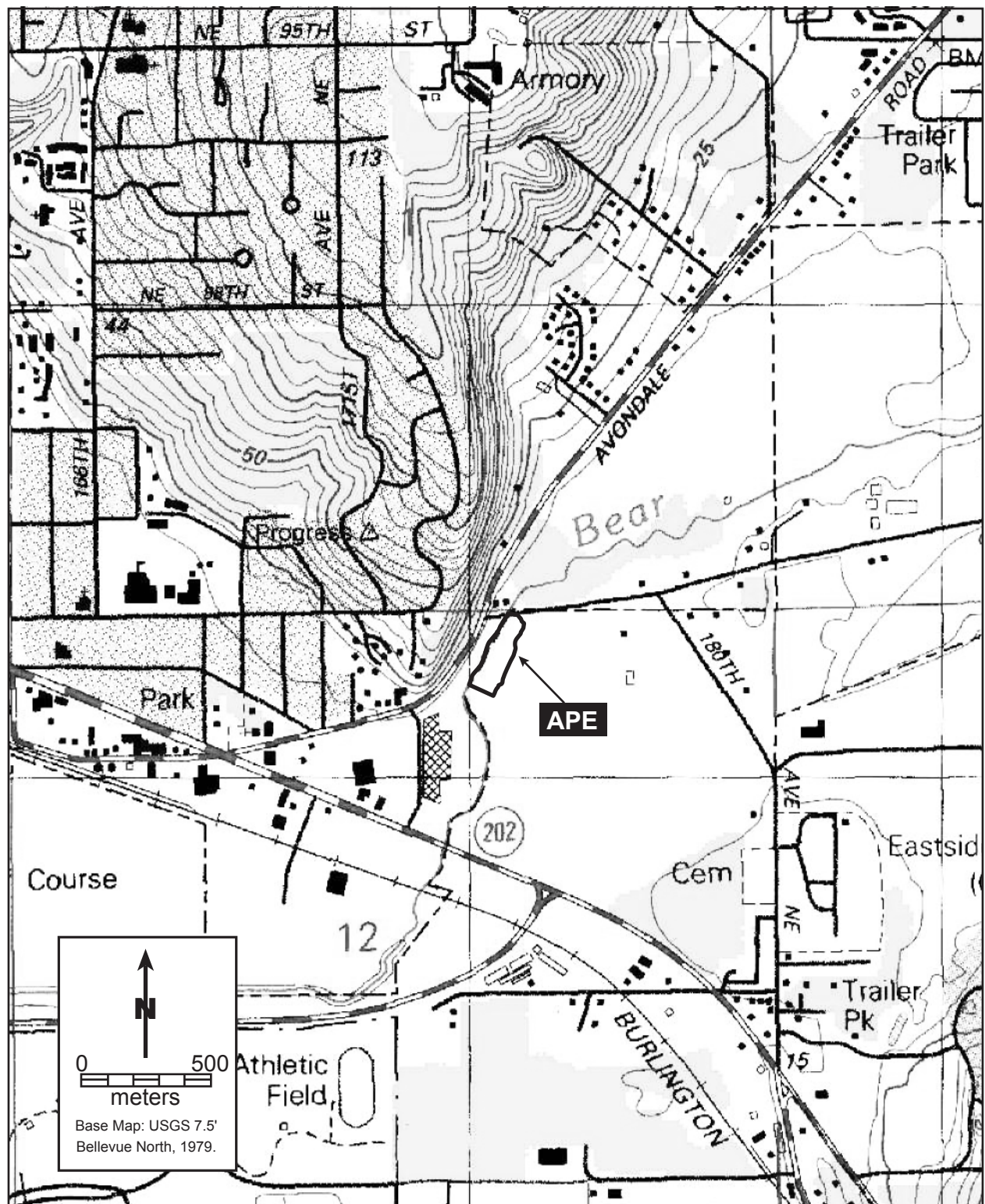
King County is requesting WSDOT notify the SHPO under the terms of the Programmatic Agreement to revise the APE. If you have any questions or need additional information please contact me at (206) 263-7281.

Regards,



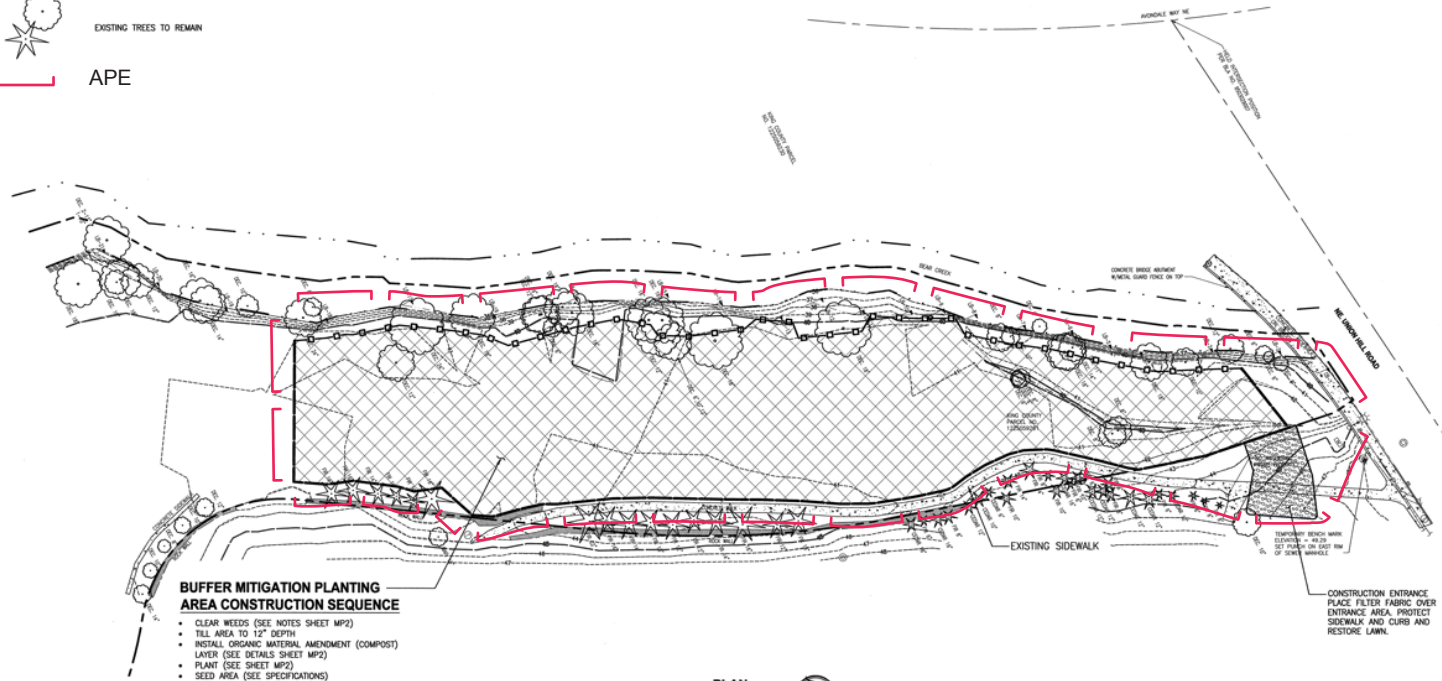
Gina Auld  
Capital Project Manager

cc: Jenny Bailey, Project Manager, Parametrix  
Tina Morehead, Engineer III, King County DOT/RSD/ESS  
Ronda Strauch, King County, Engineer IV, King County DOT/RSD/ESS  
Jay Osborne, Acting Manager, King County DOT/RSD-CIP & Planning Section  
Tom Minichillo, Archaeologist, King County DOT/RSD-CIP & Planning Section



**LEGEND:**

- LIMIT OF WORK
- SILT FENCE, SEE DETAIL
- - - OHWM
- - - PROPERTY LINE
- ▨ BUFFER MITIGATION PLANTING AREA  
(SEE SHEET MP2 FOR PLANT LIST AND DETAILS)
- 🌳 EXISTING TREES TO REMAIN
- APE



**BUFFER MITIGATION PLANTING AREA CONSTRUCTION SEQUENCE**

- CLEAR WEEDS (SEE NOTES SHEET MP2)
- TILL AREA TO 12" DEPTH
- INSTALL ORGANIC MATERIAL AMENDMENT (COMPOST) LAYER (SEE DETAILS SHEET MP2)
- PLANT (SEE SHEET MP2)
- SEED AREA (SEE SPECIFICATIONS)



Base Map: Parametrix 2009