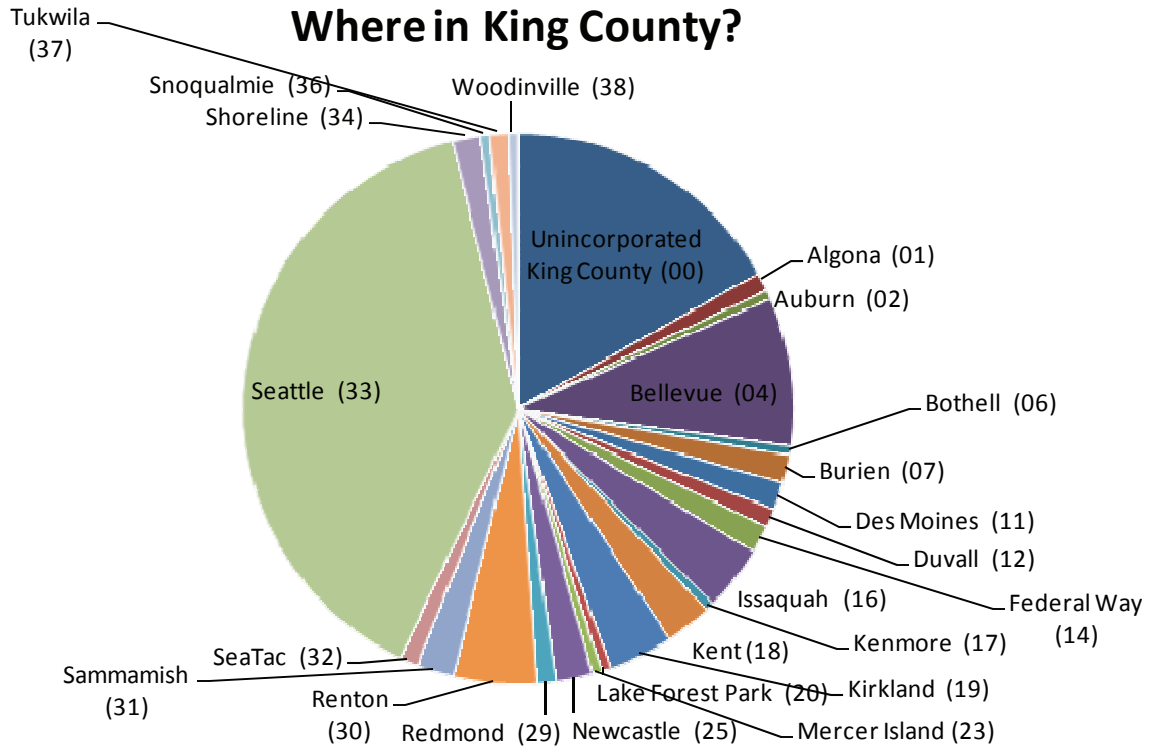


Where in King County?



TOPIC QUESTIONS

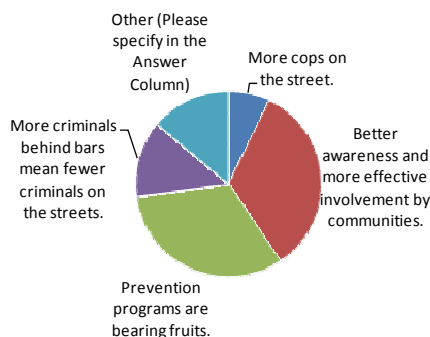
(T-1) In general, which **ONE** of the following approaches to lowering crime rates in King County comes closest to your own view?

1	More money <u>and/or</u> effort should go into addressing the social and economic problems that can lead to crime through better education and job training.	54	26%
2	More money <u>and/or</u> effort should go to incarcerating repeat offenders and deterring new offenders by improving law enforcement with more jails, police and judges.	30	14%
3	Public safety is best achieved by using both of the previous approaches , taking into account circumstances, such as the offenders socio-economic status, whether drug/alcohol addiction or mental illness is involved, whether the crime is a violent crime or a property crime, the severity of the crime and the number of victims.	105	50%
0		Abstain	6 3%
6		Object	11 5%

(T-2) According to statistics compiled by the State Office of Financial Management, the rate for violent crimes in King County has gone down significantly from 716 crimes per 100,000 persons in 1990 to 371 per 100,000 in 2007. National, state, and local figures show similar trends (see background information materials). Experts are divided about the reasons for this long-term decrease. *Do you believe that it owes most to:*

1	More cops on the street.	12	6%
2	Better awareness and more effective involvement by communities.	55	26%
3	Prevention programs are bearing fruits.	53	25%
4	More criminals behind bars mean fewer criminals on the streets.	22	11%
5	Other (Please specify in the Answer Column)	23	11%
0		Abstain	33 16%
6		Object	10 5%

(T-2) What lowered crime?



Comments on T-2 (why crime rates are lower)

Biggest reason for decline in crime is changing demographics, I suspect, not any particular category of government activity.

Changes in demographics

Changing demographics

Could be age cohort - e.g. less teenagers

Decreased expense on courts

Demographic shift - fewer youth.

Demographics - aging population

I believe success comes from using a variety of tools, including tougher sentences, more prevention efforts and community involvement.

I don't believe these numbers account for repeat offenders. Let's stop locking up repeat offenders and get more preventive programs

I picked Other because I feel there are multiple reasons, all of 1., 2., 3., and 4. above, plus I believe the criteria have changed.

Improved economy and job prospects

Legalized abortion reducing the number of unwanted and neglected youth

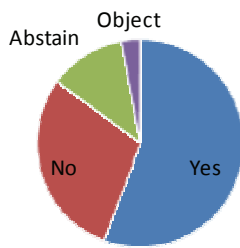
Legalized abortion; better economic opportunities

No best practices - No objective analysis of outcomes of criminal justice system in King County

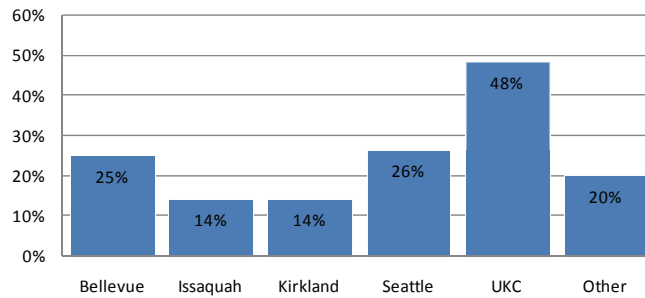
Rhe demographics have changed and there are less young men vs. the overall population

They are unaware of all the crimes for which people aren't being caught & convicted

**(T-4) Public Safety as
Paramount Duty of King
County**



**(T-3) % respondents from each location who
responded "not enough patrol"**



(T-3) *Are there enough police or sheriff officers patrolling where you live and work?*

1	Yes	135	65%
2	No	55	26%
0	Abstain	12	6%
6	Object	6	3%

(T-4) *Public education is the "paramount duty" of the State of Washington. Should Public Safety be "the paramount duty of county government", when considering other county responsibilities such as elections, public health, transit, and parks?*

1	Yes	116	56%
2	No	61	29%
0	Abstain	25	12%
6	Object	6	3%

Comments on T-4 (paramount duty of county)

Public Health!

The most important priority that should now exist for all forms of government is sustainability. That requires an understanding of what is necessary to achieve it, and that means not pursuing an assumed unlimited growth.

They are all interrelated and all important

(T-5 to T-12): Thinking about the “Law & Justice” services provided by King County, please rate your overall level of satisfaction and your views on the importance of the different agencies to you and to your community.

(T-5) *How important to you and your community is the **King County Sheriff’s Office**?*

1	1: Very Important	76	37%
2	2	41	20%
3	3: Neutral	47	23%
4	4	19	9%
5	5: Very Unimportant	13	6%
0	Abstain	10	5%
6	Object	2	1%

(T-6) *How satisfied overall are you with the **King County Sheriff’s Office**?*

1	1: Very Satisfied	31	15%
2	2	64	31%
3	3: Neutral	59	28%
4	4	16	8%
5	5: Very Dissatisfied	9	4%
0	Abstain	28	13%
6	Object	1	0%

(T-7) *How important to you and your community is the **King County Prosecutor’s Office**?*

1	1: Very Important	81	39%
2	2	63	30%
3	3: Neutral	35	17%
4	4	12	6%
5	5: Very Unimportant	8	4%
0	Abstain	8	4%
6	Object	1	0%

(T-8) *How satisfied overall are you with the **King County Prosecutor’s Office**?*

1	1: Very Satisfied	33	16%
2	2	70	34%
3	3: Neutral	54	26%
4	4	8	4%
5	5: Very Dissatisfied	10	5%
0	Abstain	31	15%
6	Object	2	1%

(T-9) *How important to you and your community is the **King County Superior Court?***

1	1: Very Important	75	36%
2	2	66	32%
3	3: Neutral	37	18%
4	4	12	6%
5	5: Very Unimportant	4	2%
0		Abstain	13 6%
6		Object	1 0%

(T-10) *How satisfied overall are you with the **King County Superior Court?***

1	1: Very Satisfied	22	11%
2	2	60	29%
3	3: Neutral	68	33%
4	4	16	8%
5	5: Very Dissatisfied	7	3%
0		Abstain	33 16%
6		Object	2 1%

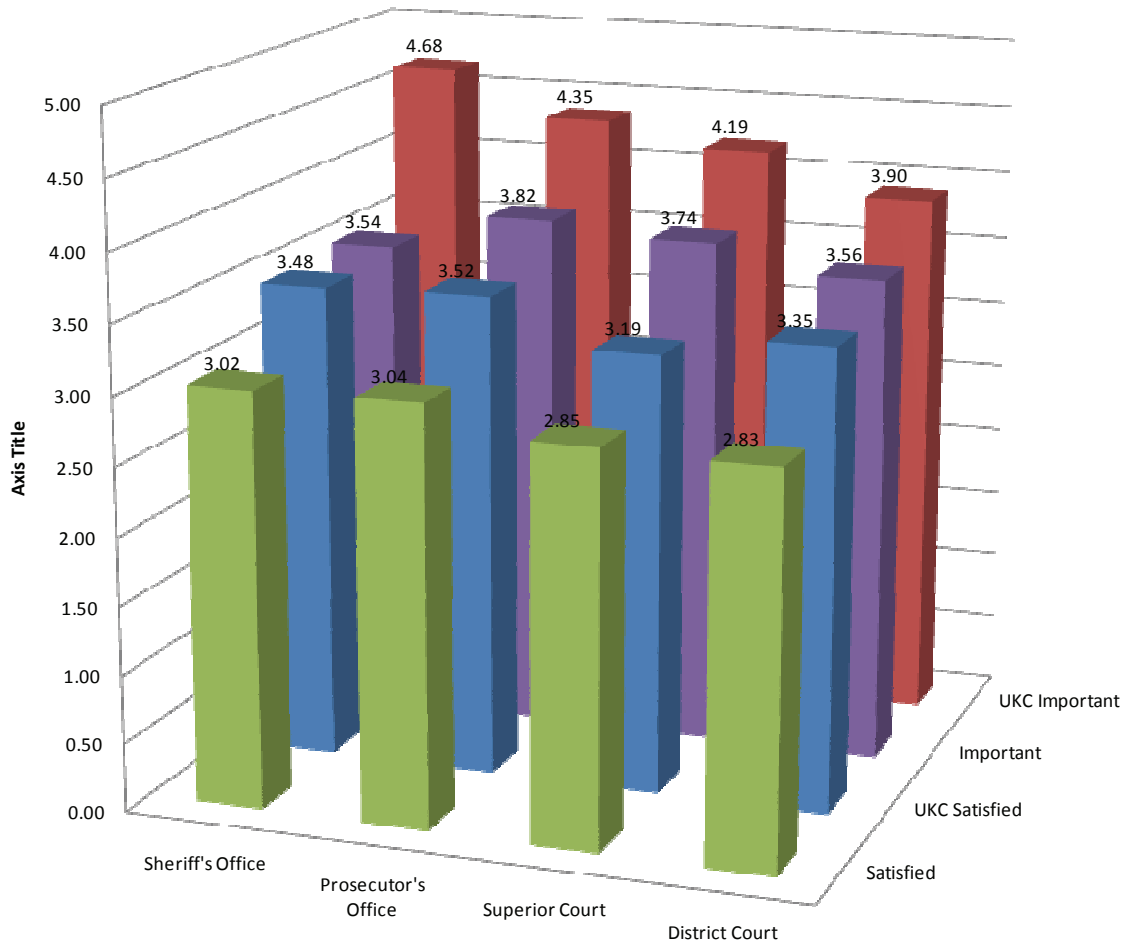
(T-11) *How important to you and your community is the **King County District Court?***

1	1: Very Important	59	28%
2	2	74	36%
3	3: Neutral	38	18%
4	4	15	7%
5	5: Very Unimportant	5	2%
0		Abstain	16 8%
6		Object	1 0%

(T-12) *How satisfied overall are you with the **King County District Court?***

1	1: Very Satisfied	21	10%
2	2	64	31%
3	3: Neutral	61	29%
4	4	20	10%
5	5: Very Dissatisfied	5	2%
0		Abstain	35 17%
6		Object	2 1%

Importance/Satisfaction King County Law & Justice Offices Countywide and UKC



	Sheriff's Office	Prosecutor's Office	Superior Court	District Court
■ Satisfied	3.02	3.04	2.85	2.83
■ UKC Satisfied	3.48	3.52	3.19	3.35
■ Important	3.54	3.82	3.74	3.56
■ UKC Important	4.68	4.35	4.19	3.90

(T-13 through T-22): Please prioritize the following Law & Justice priorities by using a scale where 1 means "Top Priority", 2 means "high priority", 3 means "Medium Priority", 4 means "low priority", and 5 means "Bottom Priority".

(T-13) Arresting and incarcerating violent criminals.

1	1: Top priority	151	73%
2	2	31	15%
3	3: Neutral	14	7%
4	4	3	1%
5	5: Bottom priority	2	1%
0		Abstain	3 1%
6		Object	4 2%

(T-14) Arresting and incarcerating other criminals.

1	1: Top priority	18	9%
2	2	92	44%
3	3: Neutral	57	27%
4	4	23	11%
5	5: Bottom priority	11	5%
0		Abstain	4 2%
6		Object	3 1%

(T-15) Treatment for drug addicts who commit crimes.

1	1: Top priority	59	28%
2	2	70	34%
3	3: Neutral	44	21%
4	4	21	10%
5	5: Bottom priority	7	3%
0		Abstain	5 2%
6		Object	2 1%

(T-16) Treatment for people with a mental illness who commit crimes.

1	1: Top priority	89	43%
2	2	64	31%
3	3: Neutral	31	15%
4	4	9	4%
5	5: Bottom priority	6	3%
0		Abstain	8 4%
6		Object	1 0%

(T-17) Crime prevention programs for at-risk youth.

1	1: Top priority	97	47%
2	2	58	28%
3	3: Neutral	29	14%
4	4	12	6%
5	5: Bottom priority	4	2%
0	Abstain	7	3%
6	Object	1	0%

(T-18) Programs that address drug/alcohol addiction in cases where there is a connection between the addiction and criminal activity.

1	1: Top priority	72	35%
2	2	76	37%
3	3: Neutral	30	14%
4	4	10	5%
5	5: Bottom priority	7	3%
0	Abstain	12	6%
6	Object	1	0%

(T-19) Programs that address mental illness in cases where there is a connection between mental illness and criminal activity.

1	1: Top priority	81	39%
2	2	77	37%
3	3: Neutral	27	13%
4	4	11	5%
5	5: Bottom priority	5	2%
0	Abstain	6	3%
6	Object	1	0%

(T-20) Programs that address homelessness in cases where there is a connection between homelessness and criminal activity (for example, registered sex offenders who are homeless).

1	1: Top priority	82	39%
2	2	54	26%
3	3: Neutral	37	18%
4	4	16	8%
5	5: Bottom priority	8	4%
0	Abstain	7	3%
6	Object	4	2%

(T-21) Programs that address disproportional racial impacts in arrests, convictions and imprisonments?

1	1: Top priority		55	26%
2	2		35	17%
3	3: Neutral		43	21%
4	4		30	14%
5	5: Bottom priority		31	15%
0		Abstain	11	5%
6		Object	3	1%

(T-22) Some other priority? (Please specify in Answer Column)

1	1: Top priority		19	9%
2	2		11	5%
3	3: Neutral		7	3%
4	4		0	0%
5	5: Bottom priority		5	2%
0		Abstain	162	78%
6		Object	4	2%

Comments on T-22 (some other Law & Justice priority

1) Domestic abuse; 2) child abuse; 3) firearms in public places; 4) chronic DUIs

After school programs to keep kids off the streets

Community-based health insurance to pay for treatment, whether alcohol, mental illness or other issues relating to disability.

Cultural inclusion and competency

Decriminalizing and legalizing certain drugs and prostitution

Education for people to inspire and inform

Emphasis on long-term offenders and education as opposed to incarceration of new offenders in misdemeanor non-violent crimes

Financial crimes where fraud or embezzlement is involved and millions of dollars are involved

Gang violence

Get someone who understands budgets/spending from the private sector to help King County out.

Hate crimes

Hiring practices and HR. Who determines who gets hired? Too stringent, protocol.

How other countries deal with CJ.

I believe the "Three Strikes and You're Out" should be expanded and should include more crimes with appropriate sentences; for example drunk driving (no more 7 time repeat offenders).

I don't think that public safety should be our only priority. It is important.

Programs focused on restitution should be emphasized. Criminals need to be put to work doing constructive tasks in a structured environment to teach them constructive behavior. Their earnings should go toward their upkeep and paying back their victims. Keep labor unions and the ACLU out of the picture. They're part of the problem.

Programs that deal with gang behavior

Programs to divert people with economic problems that lead to crime (i.e. auto tags suspension)

Quality of life (litter, property maintenance), vandalism

Reevaluate tax collection and distribution. More communication between volunteer and nonprofit and professional

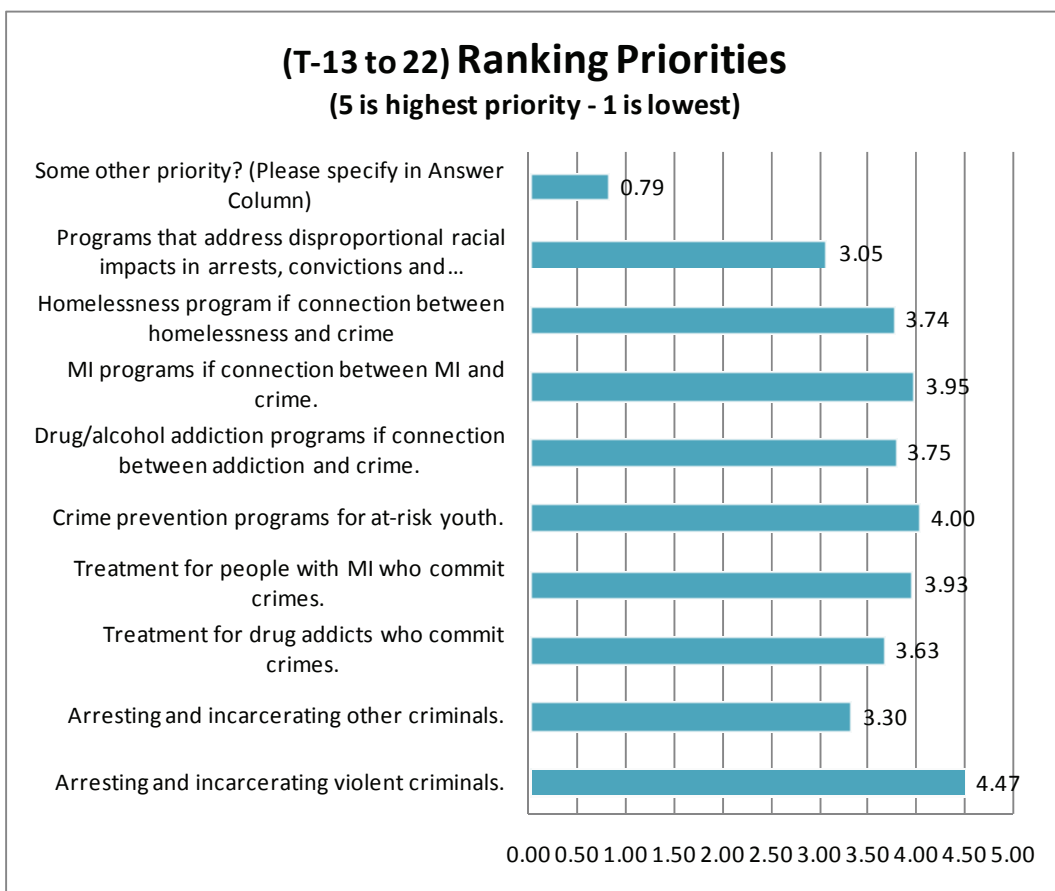
Schools should not be allowed to kick kids out - should be responsible for finding ways to educate all children.

Since we are in tough financial times, I believe we need to take that terrible look at what each program is producing versus what we are spending for it. For example, if spending \$1000 for a day of a treatment program correlates to reduced jail time that saves the county \$1000, we need to look at the treatment program as the way to go. I suspect this is too painful for anyone to want to take on now, but I strongly believe it is the way to go, especially given the current fiscal crisis.

Strengthen family values. Restore parental fights when raising children (not adversarial)

I don't think that public safety should be our only priority. It is important.

Unfortunately justice system works within tight barriers that don't allow for them to look at why these folks commit crimes



(T-23 through T-35): Indicate whether the following Law & Justice areas should be getting more or less attention, where more attention can mean more funding, allocation of more resources and/or changes to current law, by using a scale where 1 means "Much More Attention", 2 means "more attention", 3 means "no changes from what is currently being done", 4 means "less attention" and 5 means "Much Less Attention".

(T-23) Violent crimes (excluding domestic violence)

1	1: Much more attention	69	33%
2	2	62	30%
3	3: Neutral	56	27%
4	4	4	2%
5	5: Much less attention	2	1%
0	Abstain	14	7%
6	Object	1	0%

(T-24) Domestic Violence (violence among family members)

1	1: Much more attention	50	24%
2	2	73	35%
3	3: Neutral	60	29%
4	4	9	4%
5	5: Much less attention	4	2%
0	Abstain	11	5%
6	Object	1	0%

(T-25) Car theft

1	1: Much more attention	13	6%
2	2	56	27%
3	3: Neutral	107	51%
4	4	16	8%
5	5: Much less attention	5	2%
0	Abstain	9	4%
6	Object	2	1%

(T-26) Burglaries

1	1: Much more attention	31	15%
2	2	77	37%
3	3: Neutral	74	36%
4	4	12	6%
5	5: Much less attention	1	0%
0	Abstain	11	5%
6	Object	2	1%