

# HEALTH AND MEDICAL AREA COMMAND SITUATION REPORT

## PUBLIC HEALTH – SEATTLE AND KING COUNTY

<b>REPORT #:</b> 10	<b>OPERATIONAL PERIOD:</b> 11/17/09-11/23/09	<b>DATE:</b> 11/20/09	<b>TIME:</b> 15:00
<b>Incident Name/Incident Type:</b> H1N1 Influenza Response and Howard Hanson Dam/Green River Planning			<b>MISSION #:</b> H1N1: 09-2887 <b>Howard Hanson Dam:</b> 09-2821
<b>Locations/Areas Affected:</b> H1N1: King County; Howard Hanson Dam/Green River: City of Auburn, City of Kent, City of Renton, City of Tukwila, Unincorporated King County			
<b>HEALTH AND MEDICAL AREA COMMAND CENTER (ACC) STATUS</b>			
<b>ACC Activation Status:</b>	<b><u>ACTIVATED</u></b>		
<b>Location:</b>	<input checked="" type="checkbox"/> Primary Location	<input type="checkbox"/> Alternate Site:	
<b>Hours of Operations:</b>	<input type="checkbox"/> 24 Hour Ops.	<input checked="" type="checkbox"/> Days/Hours: Monday - Friday 8 am - 5 pm	Off Hours Emergency Contact 24/7: Public Health Duty Officer

## EMERGENCY PROCLAMATIONS/DECLARATIONS

JURISDICTIONS	NAME OF JURISDICTION	DATE	COMMENTS
<b>County Proclamation:</b>	<input checked="" type="checkbox"/> Yes <input type="checkbox"/> No	<b>Thursday, 9/10/09</b>	The King County Executive proclaimed an emergency regarding potential flooding in the Green River Valley as a result of problems with the Howard Hanson Dam
<b>Washington State Proclamation:</b>	<input type="checkbox"/> Yes <input checked="" type="checkbox"/> No		
<b>Federal Health Declaration:</b>	<input checked="" type="checkbox"/> Yes <input type="checkbox"/> No	<b>Sunday, 4/26/2009</b>	The Department of Health and Human Services issued a nationwide public health emergency declaration in response to recent human infections with a newly discovered swine influenza A (H1N1) virus
<b>National Emergency Declaration</b>	<input checked="" type="checkbox"/> Yes <input type="checkbox"/> No	<b>Saturday, 10/24/09</b>	The President declared a National Emergency for H1N1 Influenza through the National Emergencies Act, which allows healthcare facilities to petition for Social Security Act Section 1135 waivers for specific needs (i.e. waivers for specific EMTALA, HIPAA or CMS regulations).
<b>Federal Disaster Declaration:</b>	<input type="checkbox"/> Yes <input checked="" type="checkbox"/> No		

## RESPONSE GOALS

### H1N1

- Protect the public's health by minimizing the spread of H1N1 influenza in the community
- Achieve situational awareness about flu activity in King County and impacts on the healthcare system and the broader community
- Support the informational and medical resource needs of healthcare partners
- Maintain consistent and timely public information about H1N1 flu and response activities
- Maximize availability of H1N1 vaccine to protect the public's health
- Maintain continuity of Public Health operations

### Green River

- Mitigate the impact of flooding to healthcare partners and Public Health sites
- Establish plans to assist with evacuation and sheltering of the medically fragile
- Maintain consistent and timely messaging to the public and partners about the threat of the Green River flooding and impacts to the healthcare system
- Mitigate and monitor the Environmental Health impacts of a flood

## SUMMARY OF EVENT

### H1N1 Situation in King County:

- Emergency department (ED) visits for influenza like illness (ILI) have been decreasing for two consecutive weeks, and were back down to the range observed during the spring 2009 H1N1 outbreak for the week ending 11/14/09.
- Hospital admissions for 2009 H1N1 flu currently exceed levels seen at the height of the spring outbreak, though the number of reported hospitalizations has been decreasing for the past few weeks.
- Two deaths in people confirmed to have 2009 H1N1 influenza occurred in week 45 (11/8/09 to 11/14/09). Two additional 2009 H1N1 deaths have occurred since 11/14/09. All of these individuals had underlying health conditions.
- The percentage of specimens testing positive for influenza from our outpatient surveillance system has decreased for the past two weeks.
- The proportion of deaths due to pneumonia and influenza has been below the epidemic threshold since mid-September.
- Ten long-term care facilities have reported cases of influenza-like illness in their facilities since mid-October.
- School absenteeism has been fairly stable for the last several weeks.

For information on current surveillance and testing guidelines for 2009 H1N1 influenza, see:  
<http://www.kingcounty.gov/healthservices/health/preparedness/pandemicflu/swineflu/providers.aspx>.

### Case counts, 2009-2010 flu season (updated 11/16/09).

#### 2009-2010 Influenza Season (starting October 5<sup>th</sup>):

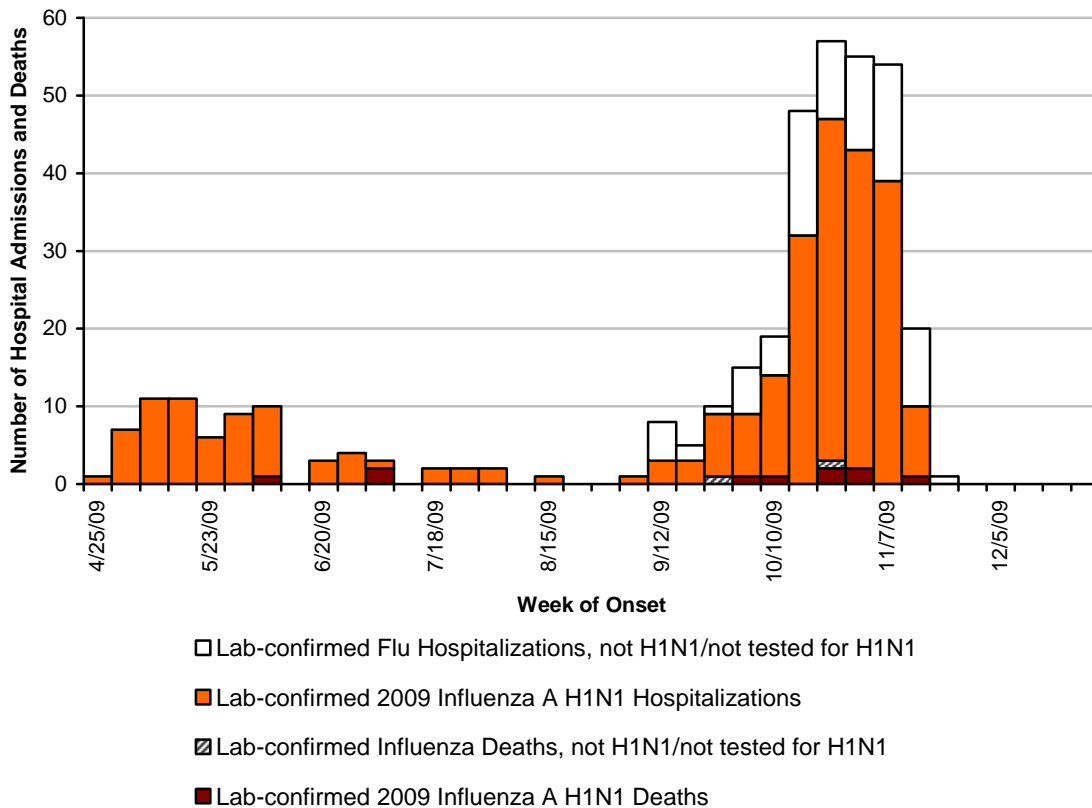
Lab-confirmed 2009 Influenza A H1N1 Hospitalizations:	198
Lab-confirmed 2009 Influenza A H1N1 Deaths:	7
Lab-confirmed Influenza Hospitalizations, not H1N1 or not tested for H1N1:	72
Lab-confirmed Influenza Deaths, not H1N1 or not tested for H1N1:	1

**2008-2009 Influenza Season (through October 4<sup>th</sup>):**

Lab-confirmed 2009 Influenza A H1N1 Hospitalizations: 82  
 Lab-confirmed 2009 Influenza A H1N1 Deaths: 3

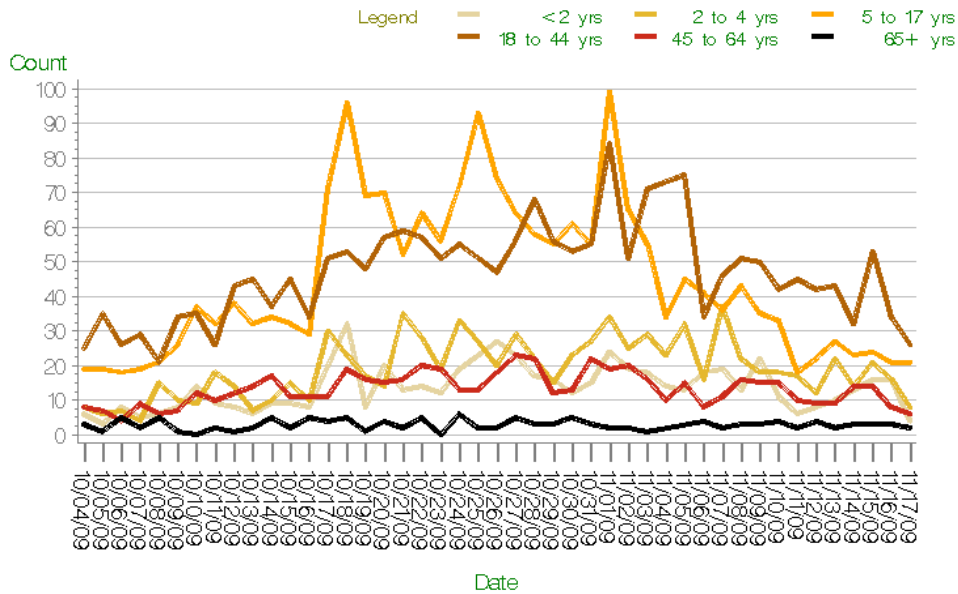
Lab-confirmed Influenza Hospitalizations, not H1N1 or not tested for H1N1: 12  
 Lab-confirmed Influenza Deaths, not H1N1 or not tested for H1N1: 1

**Public Health - Seattle and King County  
 Hospital admissions and deaths due to laboratory-confirmed influenza**



**Syndromic Surveillance (updated 11/19/09):** Emergency department (ED) influenza like illness (ILI) visits have been decreasing for 2 consecutive weeks, and were back down to the range observed during the spring 2009 H1N1 outbreak for the week ending 11/14/09. The volume of ED ILI visits is currently highest among adults ages 18-44 years, followed by children ages 5-17 years. ED admissions for ILI are also on a decreasing trend for a second consecutive week, but remain higher than the peak count observed during the 2008-09 seasonal influenza period and the peak count recorded during the 2009 H1N1 outbreak. Overall, the weekly count of ED admissions for pneumonia was on a downward trend from the peak in March 2009 through the end of September 2009, but began to increase in early October 2009, and remains elevated the week ending 11/14/09.

Daily Count of ED Visits for Influenza—Like Illness  
By Age Group



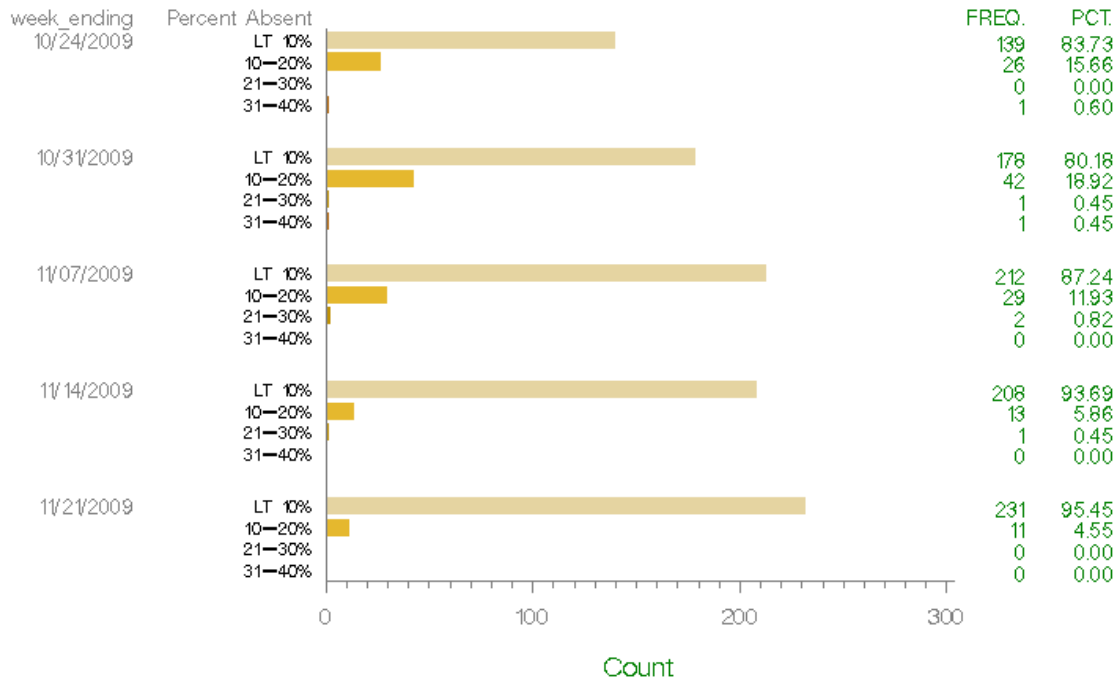
ALLHOSPITALS, Last Updated Nov 18, 2009

**P & I (Pneumonia and Influenza) Deaths (updated 11/19/09):** 5.9% of deaths were attributed to pneumonia and influenza during week 45 (national epidemic threshold not yet available). 4.1% of deaths were attributed to pneumonia and influenza during week 44, which was below the national threshold of 6.8%. During the peak of flu season, the national epidemic threshold typically ranges from 7.5 – 8.0%. The last week the national threshold was exceeded was in mid-September (6.4% vs. 6.3%).

**Long-term Care Facilities (updated 11/19/09):** Public Health has received reports of ILI from ten long-term care facilities since mid-October. In several instances, illness was limited to one resident, or to staff who did not have patient contact. Three facilities were recommended to initiate antiviral prophylaxis to limit further transmission among residents and staff.

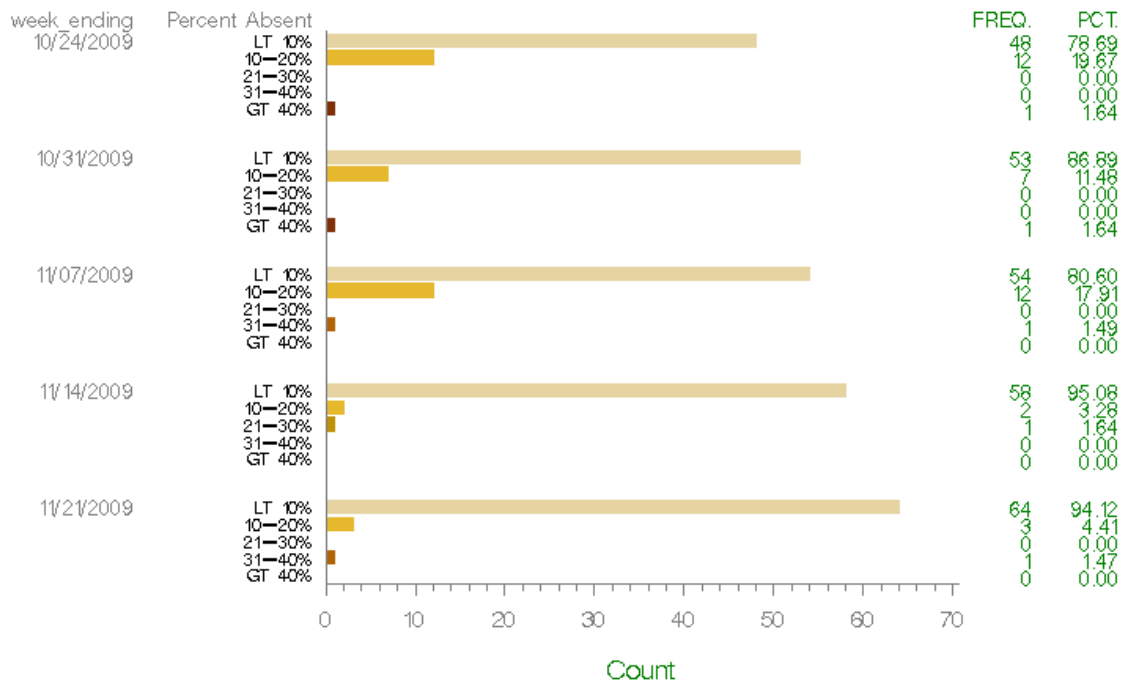
**School Absenteeism (updated 11/19/09):** Eighteen of 19 King County school districts are reporting absenteeism through our automated system. Historical data allowing examination of trends over time are only currently available for three districts. Absenteeism has been relatively stable for the past several weeks.

Distribution of Absenteeism by Grade Level  
Elementary Schools



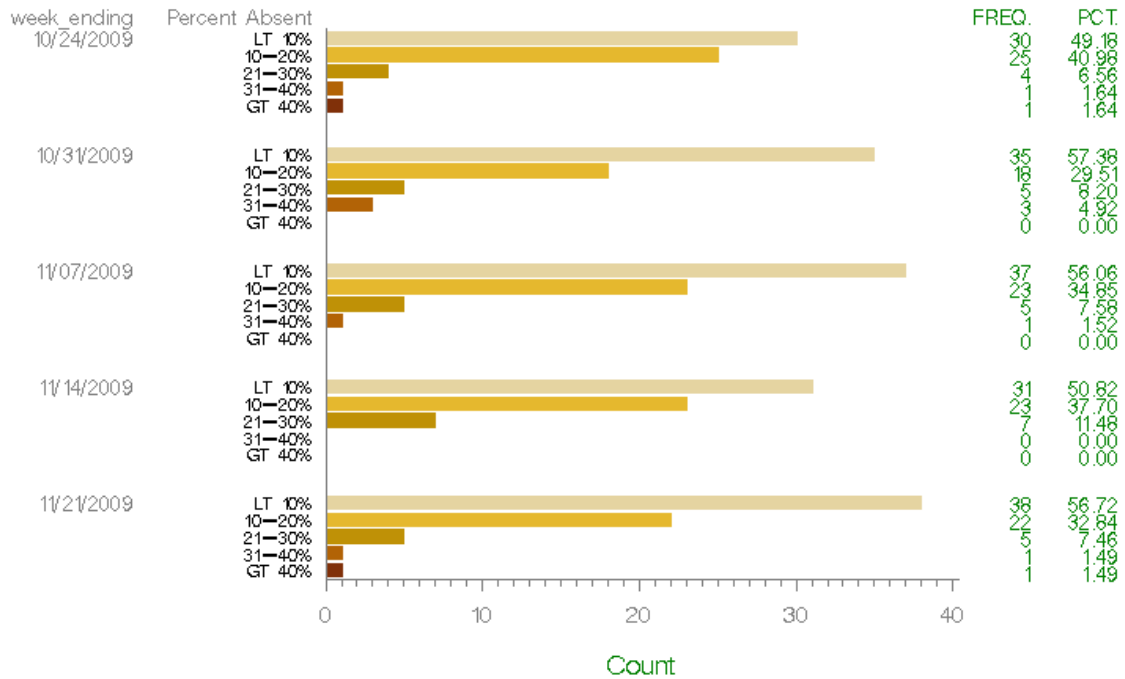
\_ALL\_, Last Updated Nov 19, 2009

Distribution of Absenteeism by Grade Level  
Middle Schools



\_ALL\_, Last Updated Nov 19, 2009

Distribution of Absenteeism by Grade Level  
High Schools



\_ALL\_ Last Updated Nov 19, 2009

**H1N1 VACCINE**

By Friday, November 20<sup>th</sup>, we estimate that there have been 233,750 doses of vaccine delivered to King County for vaccination of persons in the prioritized target populations and that 190,000 persons in the target populations have been vaccinated. Of the doses that have been received, 78% have gone to health care providers and hospitals, 13% to pharmacies, 7% to the public health system, and 2% to colleges and universities.

**Supply and Allocation Updates:** Vaccine Supply and allocation updates are now being posted to our website on Fridays: Please visit [www.kingcounty.gov/health/H1N1](http://www.kingcounty.gov/health/H1N1) for more detailed information.

**Pharmacy Information:** Pharmacies continue to receive small allocations of vaccine to provide to priority group members. More information about vaccination options at pharmacies, including locations, hours and contact information is available at <http://www.kingcounty.gov/healthservices/health/preparedness/pandemicflu/swineflu/pharmacies.aspx>

**MEDICAL RESOURCES**

*Strategic National Stockpile (SNS) Personal Protective Equipment (PPE)*

The proposed N95 respirator allocation strategy was presented to the ESF-8 Multi-Agency Coordinating Group on Friday, November 13<sup>th</sup>. MAC Group member feedback has been incorporated and a final allocation strategy and will be provided to the Health Officer for a decision.

*Pediatric Tamiflu Suspension*

Pediatric Tamiflu is in short supply nationally and pharmacies throughout King County are having trouble filling orders with their vendors. Public Health received an addition 1400 pediatric suspension courses last week to bring our regional total up to 2800 courses. We are currently working with hospitals and our community dispensing sites to determine the best strategy for this product to reach patients in the community.

*Antiviral Dispensing in the Community*

Prescriptions filled at community dispensing sites have fallen sharply from last week. Prescriptions for 75mg Tamiflu is the

most common request followed by pediatric oral suspension.

### **PUBLIC HEALTH FLU HOTLINE**

The Public Health Flu Hotline is open and staffed with general operators and nurses to answer questions on general health and safety questions about H1N1 influenza, including home care, vaccine safety, and preventative tips. Call volumes have declined by nearly 70% since the previous week with call volumes averaging around 300 calls per 24 hour period. The Flu Hotline number is 1-877-903-KING (5464).

### **CURRENT GREEN RIVER SITUATION**

Public Health continues to coordinate planning efforts with emergency management offices in the cities of Auburn, Kent, Renton, Tukwila, and King County Office of Emergency Management. PHSKC is working to help residents and partners in the valley prepare for the possibility of a flood. Preparedness efforts include business continuity planning, evacuation planning, preparing for an alternate care facility or medical needs shelter, and the possibility of rescue efforts.

## **HEALTH AND MEDICAL AREA COMMAND – OPERATIONAL OBJECTIVES**

### **H1N1 Objectives**

1. Maintain situational awareness regarding flu activity and impacts on the healthcare system and broader community.
2. Operate the Public Health Flu Hotline to manage questions from providers and the public.
3. Develop operational plan for uninsured H1N1 vaccine strategy
4. Maintain timely and accurate H1N1 messaging and communications to providers, partners and the public
5. Finalize N95 Personal Protective Equipment strategy

### **Green River Objectives**

1. Maintain situational awareness regarding impacts of severe weather including flood risks along the Green River
2. Finalize Green River Flood Response plans

## MAJOR ACTIONS

### H1N1


- Ongoing influenza surveillance
- Hosting reoccurring conference calls with regional pharmacies regarding commercial availability of Tamiflu® supplies
- Operating Public Health Flu Hotline with general operators and nurses to answer H1N1 influenza questions with expanded nurse line service beginning this weekend.
- Developing communication materials and addressing media inquiries regarding H1N1 vaccine delivery
- Incorporating MAC Group feedback on N95 respirator allocation strategy and finalizing recommendation for Health Officer decision
- Managing allocation of available H1N1 vaccine formulations
- Developing operational plan for ensuring access of H1N1 vaccine to uninsured individuals
- Collecting and analyzing H1N1 Healthcare Report

### GREEN RIVER

- Finalizing strategy for community evacuation collection points with local emergency managers and King County Metro
- Developing discharge plan for Medical Needs Shelter
- Working with local, state and federal partners, community based organizations and non-governmental organizations to develop operational response plan for disaster case management services
- Finalizing plans for clinic support at community shelters, to provide medical screening, over-the-counter medications and prescription writing

## ESF-8 SITUATION STATUS REPORT – H1N1

Prepared by: **Onora Lien, Situation Unit Lead**

Approved for Distribution:  Date: 11/20/2009

Area Commander: **Michael Loehr**