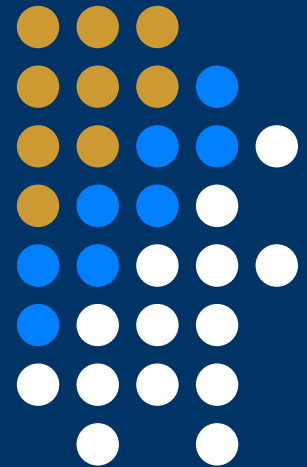


A Coordinated Health and Medical Response



KING COUNTY
Healthcare
Coalition

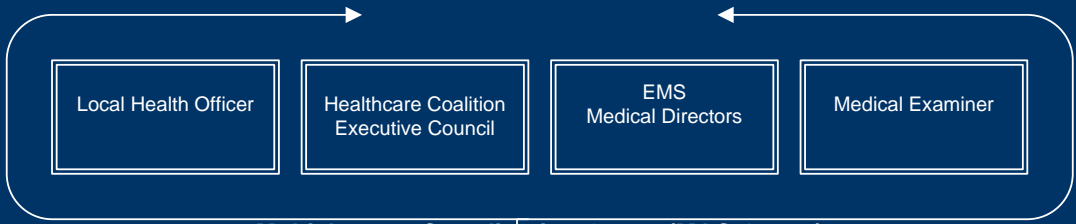
Prepare. Respond. Recover.



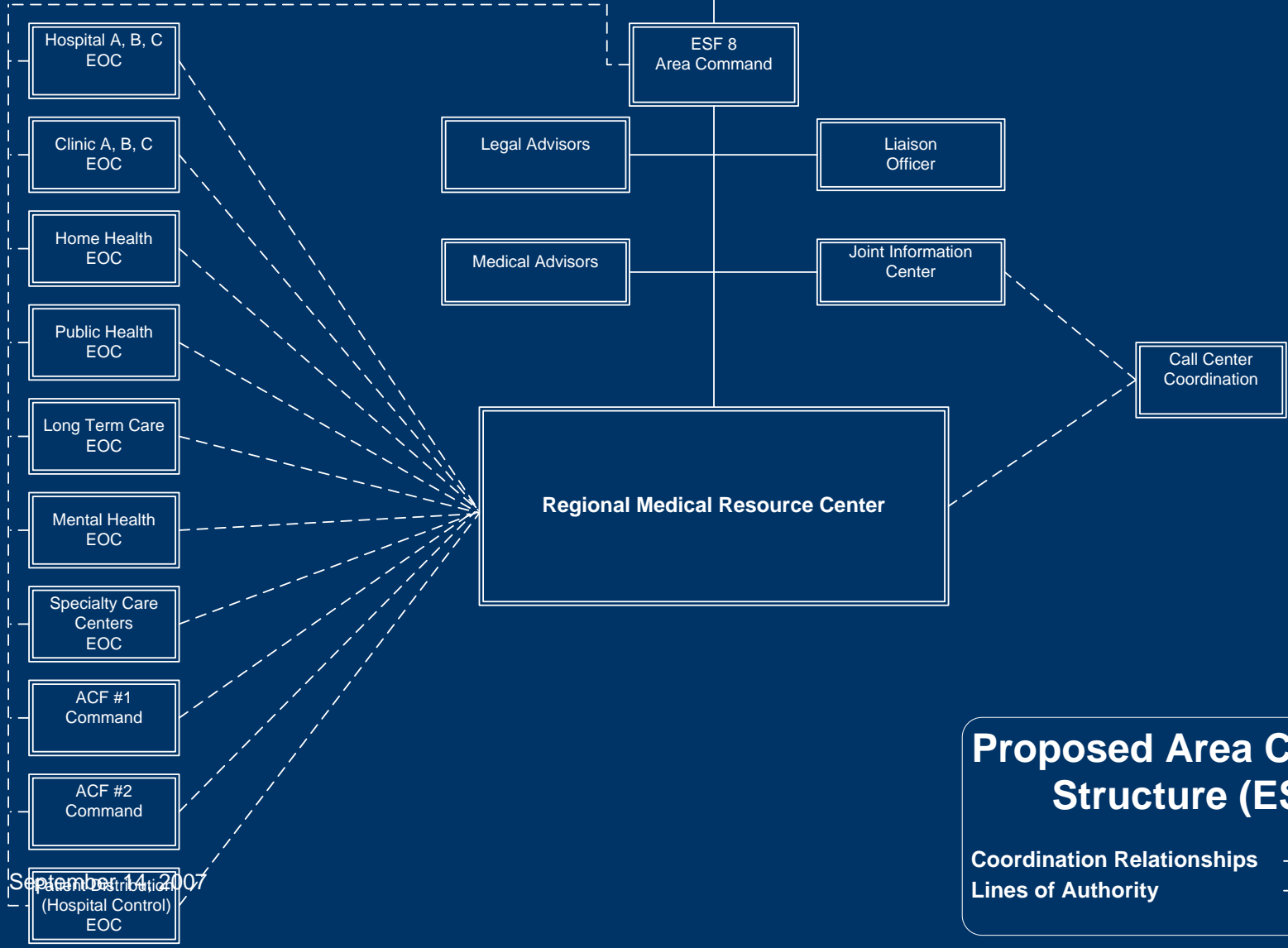


Presentation Outline

- Health and Medical Command and Response Structure
- RMRC Overview
- Incident Management Software Overview
- Approval of Sector Rollout Plan
- Next Steps



Multi-Agency Coordination Group (MAC Group)



Proposed Area Command Structure (ESF-8)

Coordination Relationships - - - - -
Lines of Authority _____

September 14, 2007
(Hospital Control)
EOC

Key Elements: Command Structure



- Promotes coordinated, system-wide policy decisions during emergencies
- Incorporates the continuum of care into decision making and response
- Acknowledges the legal authorities of the Local Health Officer

Key Elements: Response Structure



- Coordinates and manages medical staff and resources
- Supports regional health and medical operations
- Coordinates incident information and anticipates needs among health care system partners
- Ensures health care system partners can connect with their local EOCs for non-medical support

RMRC Response Objectives



Logistics

- Match medical resources for healthcare system
- Work with local EOC's to ensure support of Call Center and Alternate Care Facilities efforts
- Coordinate with Puget Sound Blood Center on blood distribution
- Acquire and distribute resources including Strategic National Stockpile (SNS) and National Disaster Medical System (NDMS) Assets
- Support Hospital Control in patient distribution as needed
- Coordinate transportation needs local EOCs and transportation agencies

Planning

- Collect and manage Intelligence
- Facilitate Situation Awareness for Healthcare Organizations and the MAC group
- Track and Forecast Medical Resource Requests
- Coordinate with local EOC's on Critical Infrastructure restoration
- Coordinate with Hospital Control on Patient Bed Availability
- Manage regional health and medical volunteers human resource management



RMRC Preparedness Objectives



- Ensure Critical Infrastructure Hardening
 - Priority Utility Restoration (Power, Water, etc.)
- Acquire & Coordinate Resources
 - Memorandum of Understanding (MOU) Project
 - Medical Vendor Interdependencies
- Building Communications Capadability and Redundancy
 - Government Emergency Telecommunications Service (GETS)
 - Wireless Priority Service (WPS)
 - Telecommunications Service Priority (TSP)
 - 800 MHz & Satellite Radio Drills
 - KCHHealthTrac
- Anticipate & Mitigate Challenges (i.e., I-5 Closures Bulletins)



What is KCHealthTrac?



KCHealthTrac is an Incident Management software system designed to support the ESF-8 Health and Medical response and Healthcare Coalition members and partners.

System Features



- Resource & Pharmaceutical Tracking
- Bed Availability
- GIS Mapping
- Document Archive – “Knowledgebase”
- Secure & Archived Communications – “Command Center”
- Alert Manager
- Patient Tracking
- ED Saturation/Diversion Status
- Contact Management
- Reporting Features Can Export All Data Elements

2008 Rollout Features



- Resource Management
- Pharmaceutical Tracking
- Alerting
- Command Center
- Knowledgebase
- GIS Mapping
- Reporting

System Specifications



- System Designed by ImageTrend
- Web-Based System
- Remote Hosted System (Minneapolis & Chicago)
- 24/7 Server Monitoring
- 24/7 Tech Support
- Unlimited Logins
- HIPAA Compliant
- Outright Purchase with Yearly Support Subscription

Other ImageTrend Customers



- Three (3) statewide Resource Bridge Systems (MN, WI, NE)
- Eight (8) statewide EMS pre-hospital systems (MN, NE, MO, NH, GA, ME, WI, WA)
- Over 6 million incidents
- Over 71,000 users of ImageTrend's Emergency Data Systems
- Additional Products include custom data management systems and content management systems (e.g., human resources, student information systems)



Resource & Pharmaceutical Tracking



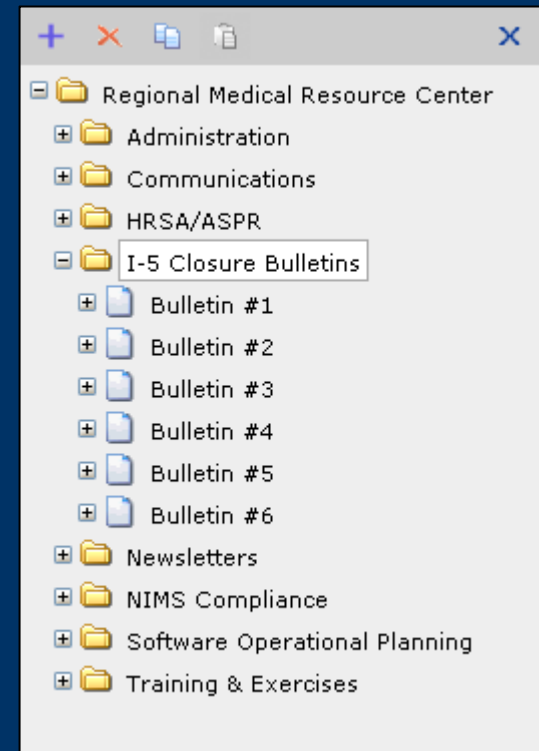
- Customizable Categories
- Unlimited Number of Items that can be Tracked
- Facilities Can Track Items Beyond What the Healthcare Coalition is Requesting
- Information Will be Shared Among Sector Partners
- Not Designed to Replace In-House Systems for Daily Operations

Category	Quantity	Available to Share	Contact	Last Update
Communications Equipment	<input type="text" value="3"/>	<input type="text" value="0"/>	<input type="text" value="Martin, Chris"/> Save	
Communications Equipment	180	20	Martin, Chris	11:02 AM
Communications Equipment	9	3	Newcombe, Anne	
			Schletzbaum, Allison	
			Schletzbaum*, Allison	04:02 PM
			Sipes, Michael	
Respiratory Equipment	27	0	Michael Sipes	06/06 11:10 AM
Respiratory Equipment	0	0	Michael Sipes	06/06 11:10 AM
Respiratory Equipment	15	0	Michael Sipes	06/06 11:10 AM
Respiratory Equipment	6	0	Michael Sipes	06/06 11:10 AM



Knowledgebase

- Storage for Reference Documents
- Information Sharing Within Committees
- Streamlined Document Editing/Review
- Document Access Control



CommandCenter



https://www.kchealthtrac.org - safetynet test - Microsoft Internet Explorer

Log out of Room | Chat History | Current Room: safetynet test

Room Notes

Edit Notes

No Notes Attached

Room Resources

Upload File

File	Created By	Date	Delete
Sign	Allison Schletzbaum	08/27/07 11:37	

Total Files: 1

Note: To save a file to your computer, Right click and select "Save Target As".

Notifications

No Members Assigned

(3:08 PM) Aimee Welch: asldkf;asdhf
(09:35 AM) Allison Schletzbaum: This is a test of this CommandCenter Room.
(09:36 AM) Allison Schletzbaum: *** File [Sign](#) was added to Room Resources. ***

Present (1)

- Allison Schletzbaum

Not Present (11)

- Aimee Welch
- Anne Newcombe
- Ryan Arneson
- Cynthia Dold
- Danica Mann
- Dan Nelson
- Joshua Spain
- Michael Patock

Send

Command Center



- Preparedness
 - Bulletin Boards
 - Committees can Conduct Subject-Specific Discussions
- Response
 - Chat Rooms
 - Ability to Attach Reference Files
- Can Create Conferences & Rooms
- Permissions Based Communication
- Archived Communications

Event Alerting

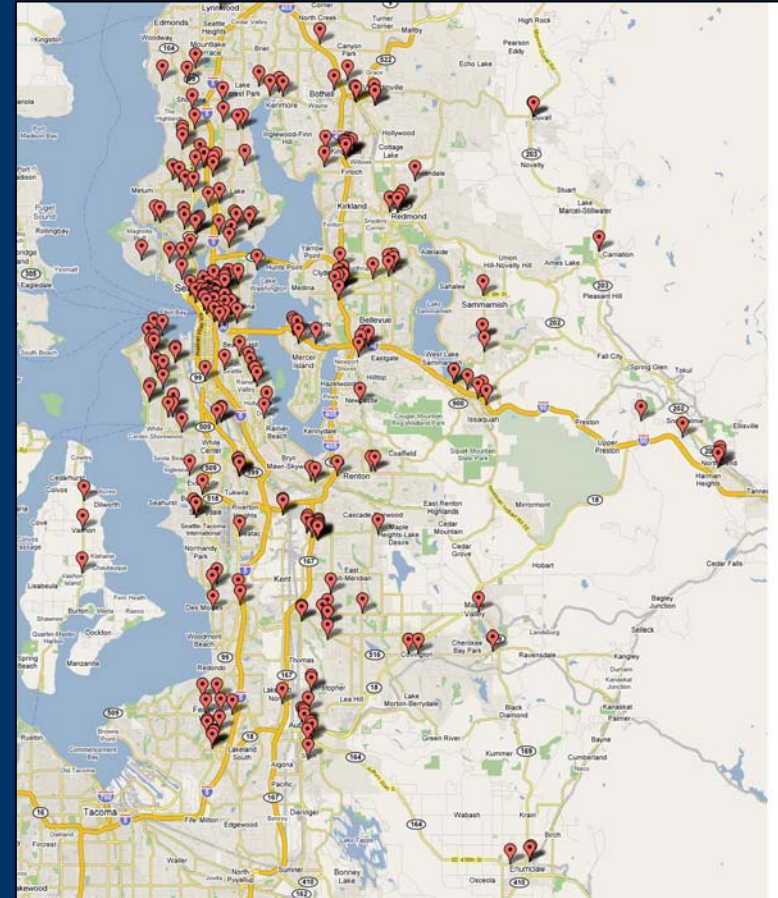


- Alerts can be sent by:
 - Phone
 - Text Message
 - Email
 - Pager
- Each user maintains their own contact information and alerting preferences

GIS Mapping



- Users can Map Facilities & Resources by:
 - Customizable Maps
 - GPS Coordinates
 - By Sector
 - By Radius from a Zip Code or City
 - By Trauma Level
 - By Special Services



KCHealthTrac: Healthcare Sector Roll-Out Timeline

	Fall 2007	Winter 07/08	Spring 2008	Summer 2008	Fall 2008	Winter 08/09	Spring 2009
Hospitals/Public Health	Configuration in Progress	Training	Exercise				
Ambulatory Care							
SafetyNet Providers							
Hospital Based Clinics			Kickoff & Configuration		Training		Exercise
Tribal Clinics							
Medical Groups							
Long Term Care							
Nursing Homes				Kickoff & Configuration	Training		Exercise
Home Health Agencies							
				Kickoff & Configuration	Training		Exercise
Palliative Care & Hospice							
				Kickoff & Configuration	Training		Exercise
Mental Health							
					Kickoff & Configuration		Training

Kickoff & Configuration will begin for these and other sectors in 2009:

**Mortuary Response Providers
Medical Examiners Office
Pharmacies**

**Dialysis
Vulnerable Populations Organizations**



Future Opportunities

- Enhance the Alerting System
- Create a centralized contact management system
 - Manage users by organization, function, and other demographic characteristics
- Scenario-Based Reporting
 - Streamline healthcare facility reporting
- Patient Tracking

Next Steps



- Approval of the Sector Workplan
- Training Material Development
- National Users Group Meeting in October
- Sector Outreach for Software Customization
- Sound Shake Exercise – March 2008

...and of course



We will maintain printed copies of all information in KCHealthTrac to ensure that we are prepared if it is not available.

Questions?



Allison Schletzbaum
RMRC Project Manager
(206) 744-6213
aschletz@u.washington.edu