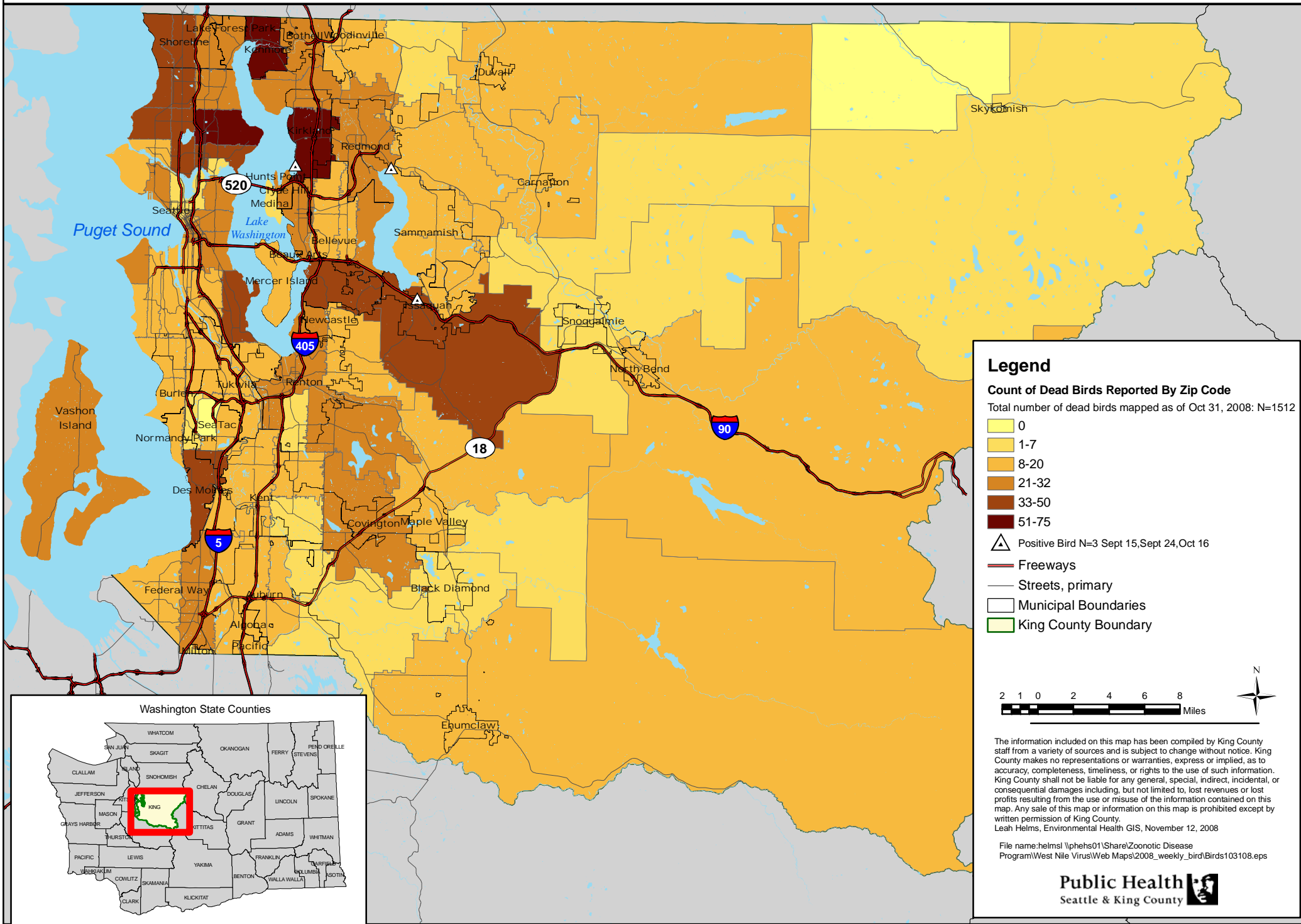


West Nile Virus Dead Bird Surveillance

January 1 - October 31, 2008



Legend

Count of Dead Birds Reported By Zip Code
 Total number of dead birds mapped as of Oct 31, 2008: N=1512

- 0
- 1-7
- 8-20
- 21-32
- 33-50
- 51-75

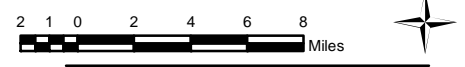
△ Positive Bird N=3 Sept 15, Sept 24, Oct 16

— Freeways

— Streets, primary

□ Municipal Boundaries

□ King County Boundary



The information included on this map has been compiled by King County staff from a variety of sources and is subject to change without notice. King County makes no representations or warranties, express or implied, as to accuracy, completeness, timeliness, or rights to the use of such information. King County shall not be liable for any general, special, indirect, incidental, or consequential damages including, but not limited to, lost revenues or lost profits resulting from the use or misuse of the information contained on this map. Any sale of this map or information on this map is prohibited except by written permission of King County.

Leah Helms, Environmental Health GIS, November 12, 2008

File name:helms\l\pheids01\Share\Zoonotic Disease Program\West Nile Virus\Web Maps\2008_weekly_bird\Birds103108.eps