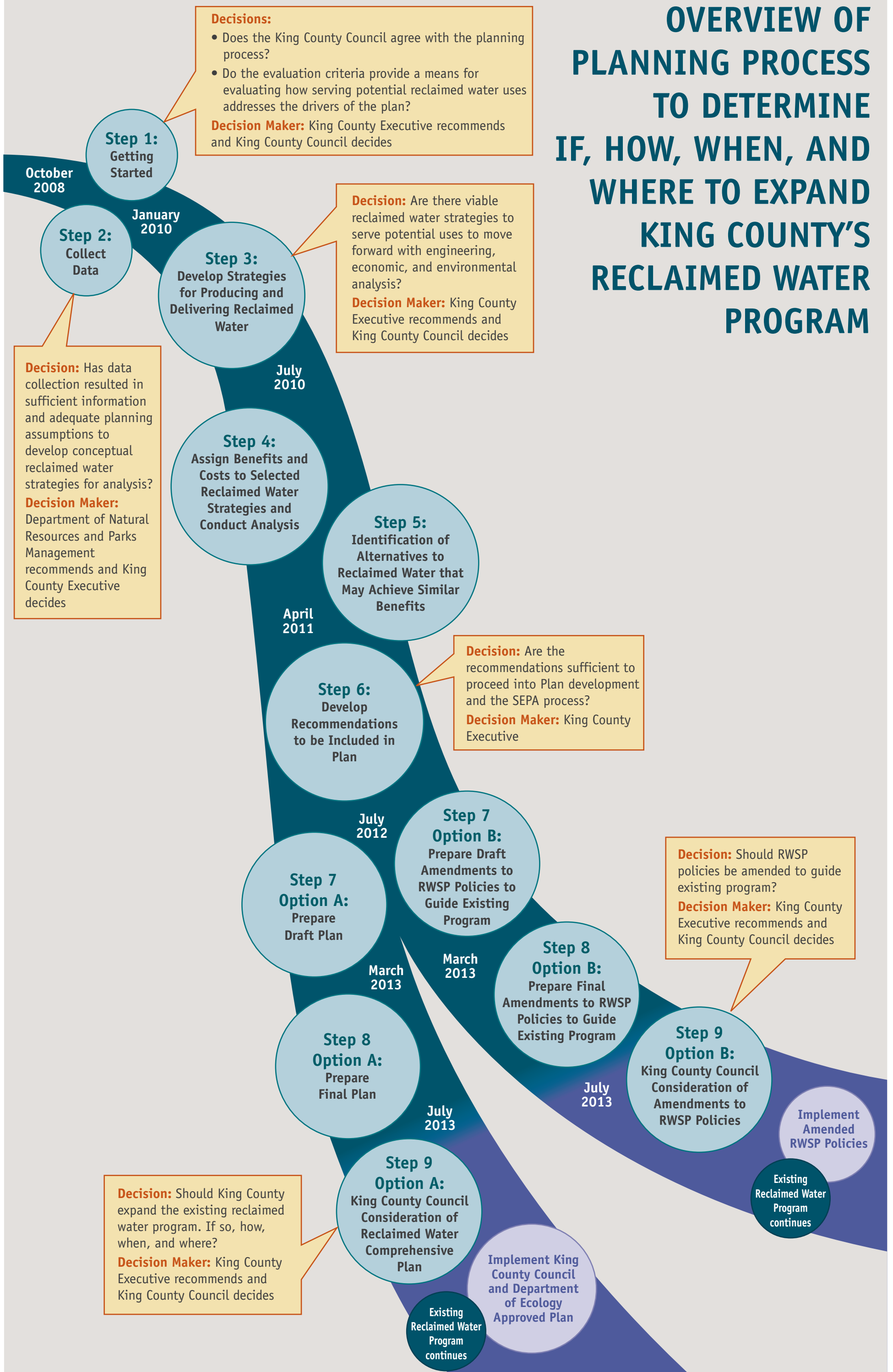
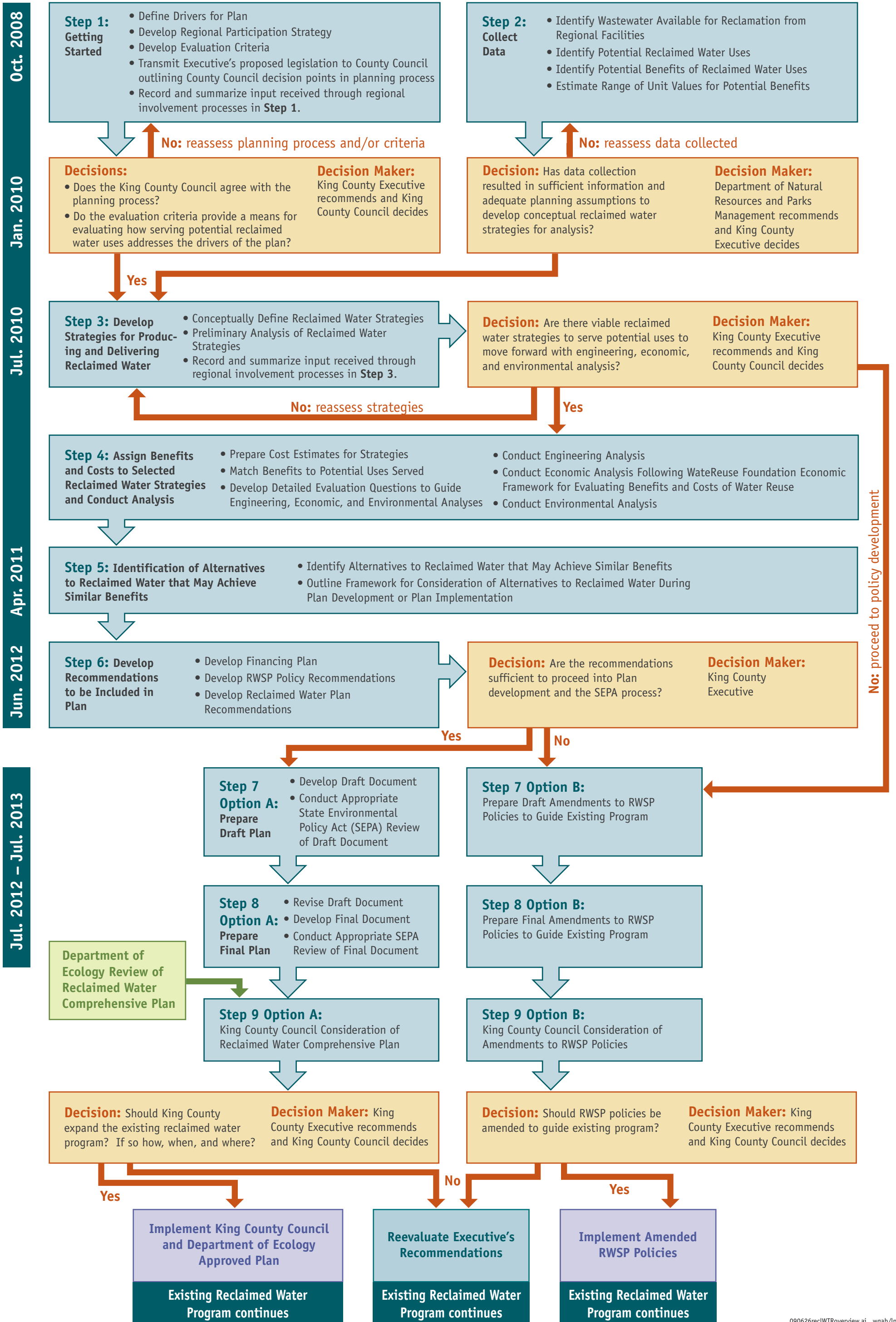


OVERVIEW OF PLANNING PROCESS TO DETERMINE IF, HOW, WHEN, AND WHERE TO EXPAND KING COUNTY'S RECLAIMED WATER PROGRAM

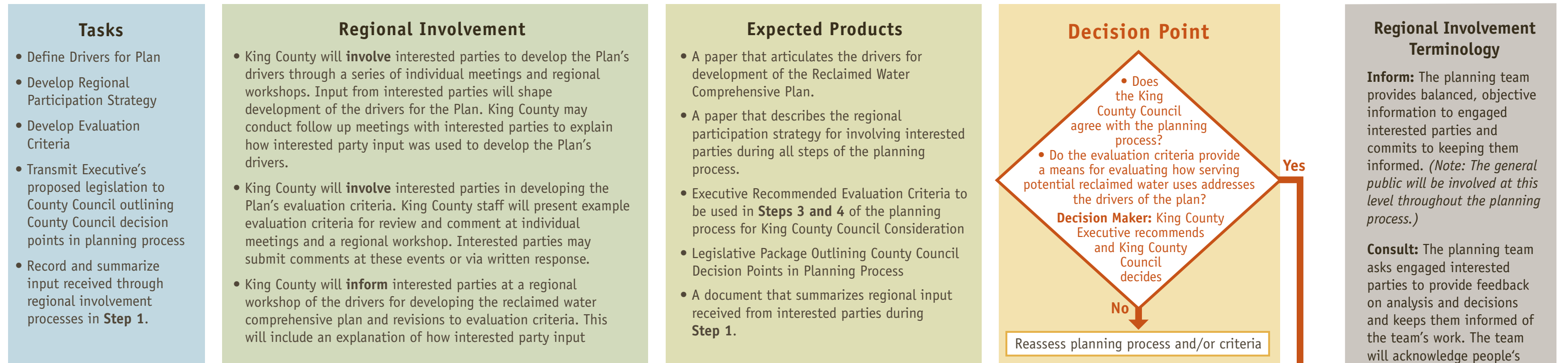


STEPS, TASKS, AND DECISION POINTS IN PLANNING PROCESS TO DETERMINE IF, HOW, WHEN, AND WHERE TO EXPAND KING COUNTY'S RECLAIMED WATER PROGRAM

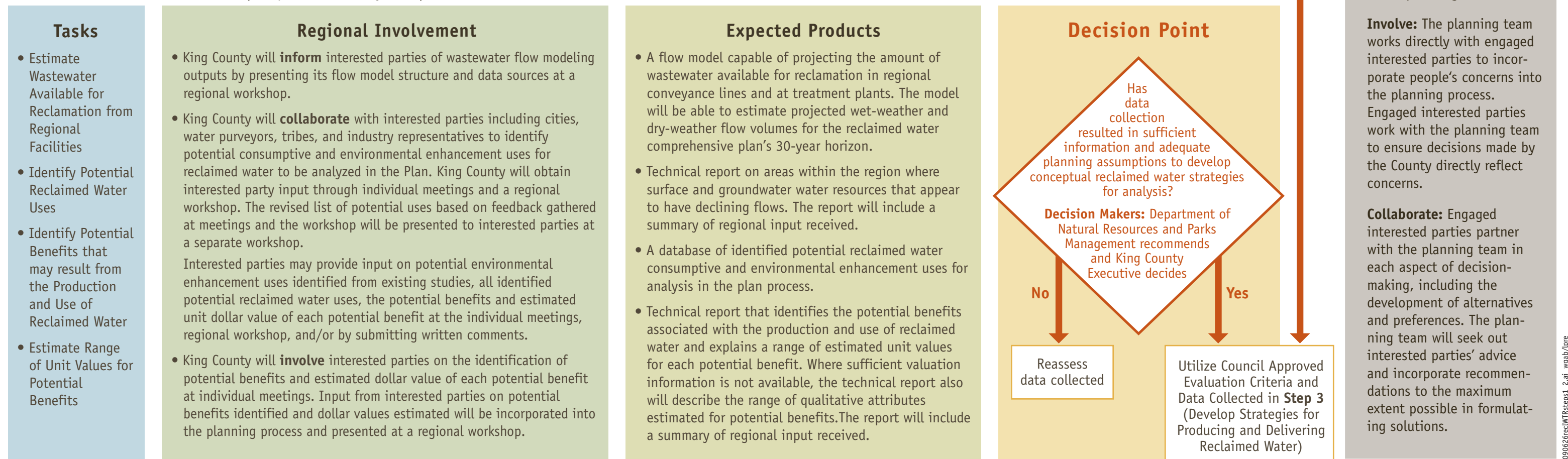


DETAILED PLAN STEPS Including Regional Involvement and Expected Products (1 of 5)

STEP 1 Getting Started (Start: October 2008)

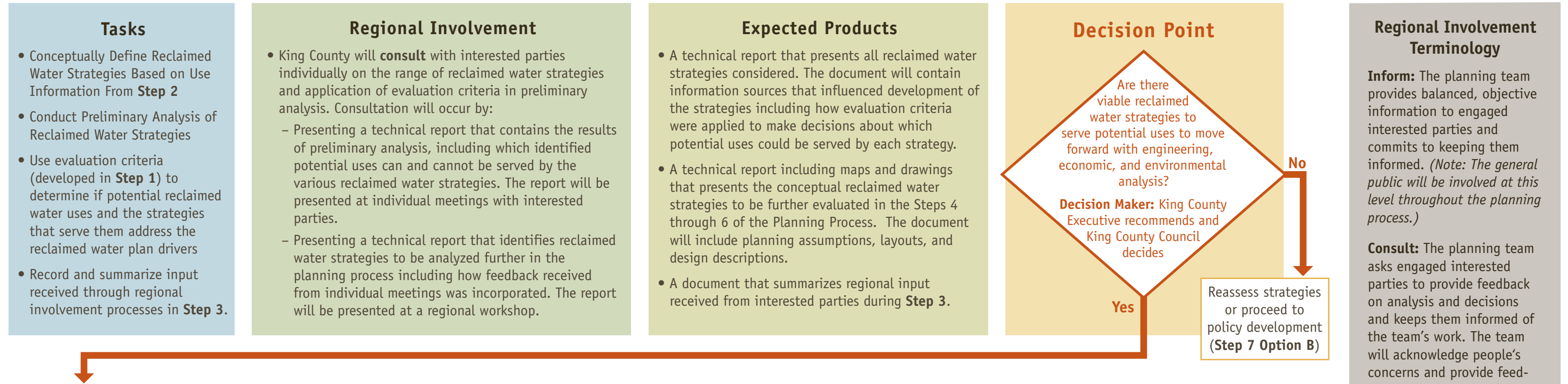


STEP 2 Collect Data (Completion: January 2010)

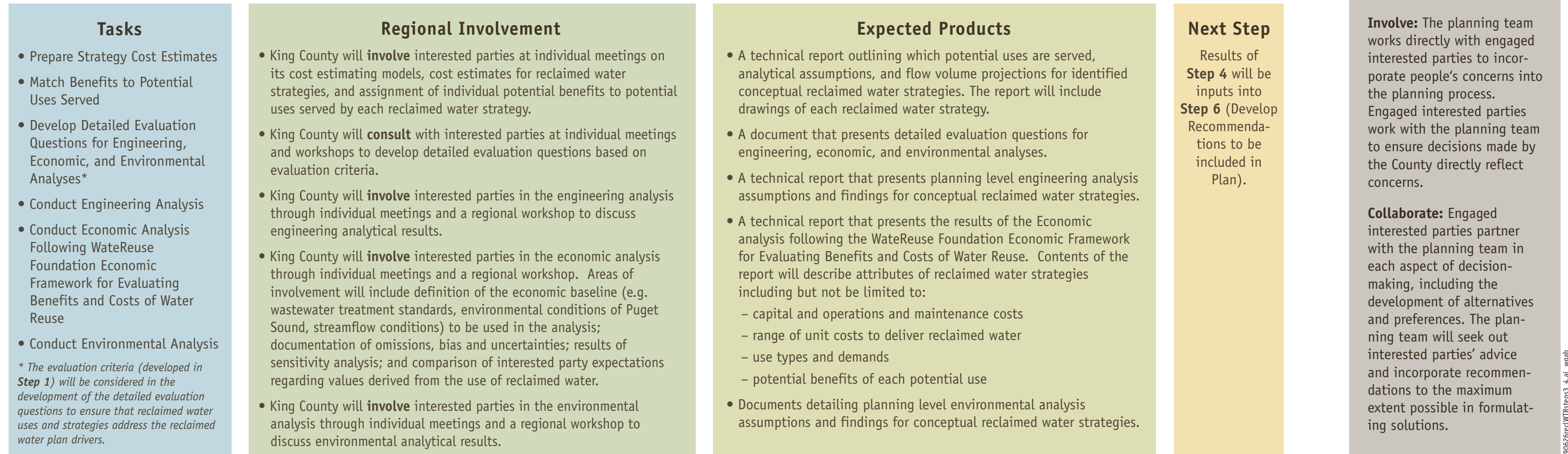


DETAILED PLAN STEPS Including Regional Involvement and Expected Products (2 of 5)

STEP 3 Develop Strategies for Producing and Delivering Reclaimed Water (Start: January 2010 Completion: July 2010)



STEP 4 Assign Benefits and Costs to Selected Reclaimed Water Strategies and Conduct Analysis (Start: July 2010 Completion: April 2011)



DETAILED PLAN STEPS Including Regional Involvement and Expected Products (3 of 5)

STEP 5 Identification of Alternatives to Reclaimed Water that May Achieve Similar Benefits (Start: July 2010 Completion: April 2011)

Tasks	Regional Involvement	Expected Products	Next Step
<ul style="list-style-type: none"> Identify Alternatives to Reclaimed Water that may Achieve Similar Benefits Outline Framework for Evaluation of Alternatives to Reclaimed Water during plan development or plan implementation 	<ul style="list-style-type: none"> King County will collaborate with interested parties including cities, water purveyors, tribes, and industry representatives to develop a draft list of potential alternatives to the production and use of reclaimed water that could provide similar benefits. Interested parties will be able to offer input at their individual meetings, by submitting written comments and at a regional workshop. The revised list of alternatives based on feedback gathered at meetings and the workshop will be presented to interested parties at a regional workshop. King County will consult with interested parties at individual meetings to develop a framework for evaluations of alternatives to reclaimed water during plan implementation. Interested parties will be able to offer input at their individual meetings and/or by submitting written comments. A draft framework representing input received will be presented at a regional workshop. 	<ul style="list-style-type: none"> A report describing alternatives to the production and distribution of reclaimed water that are linked to the potential uses and identified benefits of various reclaimed water strategies developed in Step 4 of the reclaimed water planning process; and a framework for evaluation of the alternatives either during the comprehensive planning process or during plan implementation. 	<p>Products of Step 5 will be incorporated into Step 6.</p>

Regional Involvement Terminology

Inform: The planning team provides balanced, objective information to engaged interested parties and commits to keeping them informed. *(Note: The general public will be involved at this level throughout the planning process.)*

Consult: The planning team asks engaged interested parties to provide feedback on analysis and decisions and keeps them informed of the team's work. The team will acknowledge people's concerns and provide feedback on how input influenced planning outcomes.

Involve: The planning team works directly with engaged interested parties to incorporate people's concerns into the planning process. Engaged interested parties work with the planning team to ensure decisions made by the County directly reflect concerns.

Collaborate: Engaged interested parties partner with the planning team in each aspect of decision-making, including the development of alternatives and preferences. The planning team will seek out interested parties' advice and incorporate recommendations to the maximum extent possible in formulating solutions.



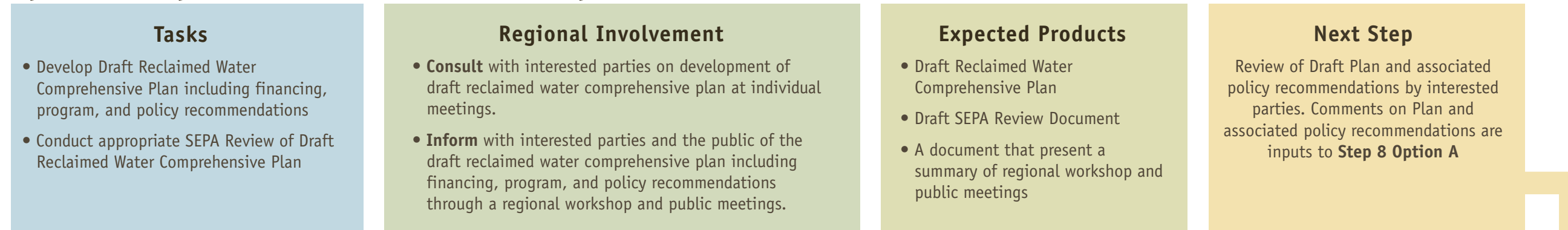
STEP 6 Develop Recommendations to be Included in Plan (Start: April 2011 Completion: June 2012)

Tasks	Regional Involvement	Expected Products	Decision Point
<ul style="list-style-type: none"> Develop Financing Plan Develop RWSP Policy Recommendations Develop Reclaimed Water Plan Recommendations 	<ul style="list-style-type: none"> King County will involve interested parties in: <ul style="list-style-type: none"> Development of a financing plan that identifies sources of funding for reclaimed water plan recommendations Issues to consider and suggestions for recommended amendments to existing RWSP reclaimed water policies Development of reclaimed water plan recommendations including reclaimed water strategies and potential uses served Consultation will occur through individual meetings. A draft financing plan, draft RWSP reclaimed water policies, and reclaimed water plan recommendations will be presented at a regional workshop. 	<ul style="list-style-type: none"> A document that presents draft policy recommendations and includes a summary of the process and regional input received to develop the draft policy recommendations. A financing plan that clearly identifies sources of funding for the reclaimed water plan recommendations. Contents of the plan will include but not be limited to: <ul style="list-style-type: none"> a description of the populations that benefit from the different potential consumptive and environmental enhancement uses of reclaimed water the estimated value, on average, of the benefits that identified populations receive a means or process for assigning cost recovery responsibility to the identified populations proposed options to recover reclaimed water costs for environmental enhancement benefits where no direct wastewater or reclaimed water customer exists A summary of regional input received. A document that contains reclaimed water plan recommendations and summary of regional input received. The recommendations will include reclaimed water strategy descriptions, capital and operation costs, revenue estimates, and financing strategy. 	<p>Decision Point</p> <p>Are the recommendations sufficient to proceed into Plan development and the SEPA process?</p> <p>Decision Maker: King County Executive</p> <p>No → Proceed to Step 7 Option B (Prepare Draft Amendments to RWSP policies) or reassess strategies.</p> <p>Yes → Advance preferred reclaimed water strategies that could serve identified potential uses, RWSP policy recommendations, and financing plan to Step 7 Option A (Prepare Draft Plan).</p>

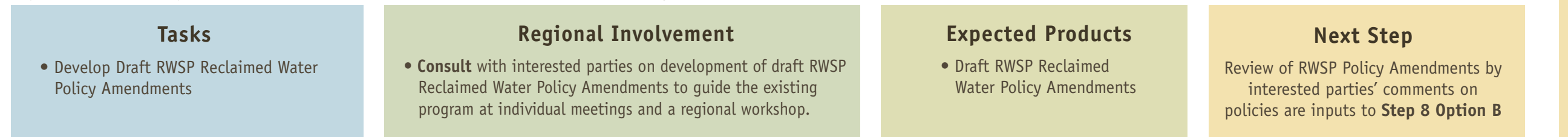
DETAILED PLAN STEPS Including Regional Involvement and Expected Products (4 of 5)

STEP 7 (Start: July 2012 Completion: February 2013)

Option A: Prepare Draft Reclaimed Water Comprehensive Plan



Option B: Prepare Draft RWSP Reclaimed Water Policy Amendments



Regional Involvement Terminology

Inform: The planning team provides balanced, objective information to engaged interested parties and commits to keeping them informed. *(Note: The general public will be involved at this level throughout the planning process.)*

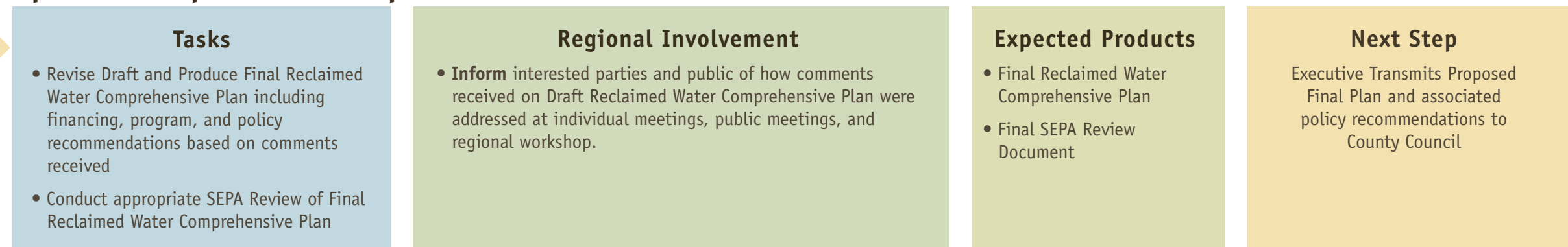
Consult: The planning team asks engaged interested parties to provide feedback on analysis and decisions and keeps them informed of the team's work. The team will acknowledge people's concerns and provide feedback on how input influenced planning outcomes.

Involve: The planning team works directly with engaged interested parties to incorporate people's concerns into the planning process. Engaged interested parties work with the planning team to ensure decisions made by the County directly reflect concerns.

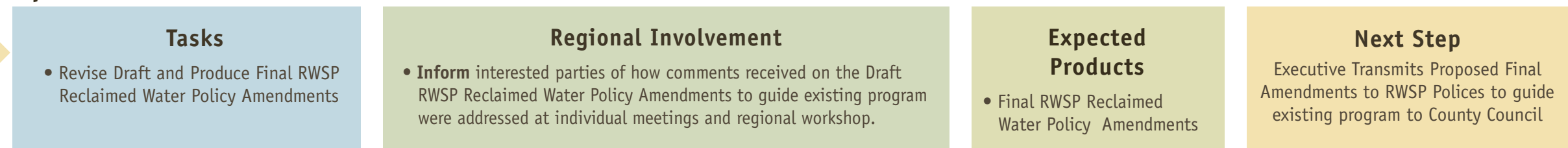
Collaborate: Engaged interested parties partner with the planning team in each aspect of decision-making, including the development of alternatives and preferences. The planning team will seek out interested parties' advice and incorporate recommendations to the maximum extent possible in formulating solutions.

STEP 8 (Start: March 2013 Completion: July 2013)

Option A: Prepare Final Comprehensive Plan



Option B: Final Amendments to RWSP Reclaimed Water Policies



DETAILED PLAN STEPS Including Regional Involvement and Expected Products (5 of 5)

STEP 9 (Start: August 2013)

Option A: King County Council Consideration of Reclaimed Water Comprehensive Plan



Option B: King County Council Consideration of Amendments to RWSP Reclaimed Water Policies



Regional Involvement Terminology

Inform: The planning team provides balanced, objective information to engaged interested parties and commits to keeping them informed. *(Note: The general public will be involved at this level throughout the planning process.)*

Consult: The planning team asks engaged interested parties to provide feedback on analysis and decisions and keeps them informed of the team's work. The team will acknowledge people's concerns and provide feedback on how input influenced planning outcomes.

Involve: The planning team works directly with engaged interested parties to incorporate people's concerns into the planning process. Engaged interested parties work with the planning team to ensure decisions made by the County directly reflect concerns.

Collaborate: Engaged interested parties partner with the planning team in each aspect of decision-making, including the development of alternatives and preferences. The planning team will seek out interested parties' advice and incorporate recommendations to the maximum extent possible in formulating solutions.