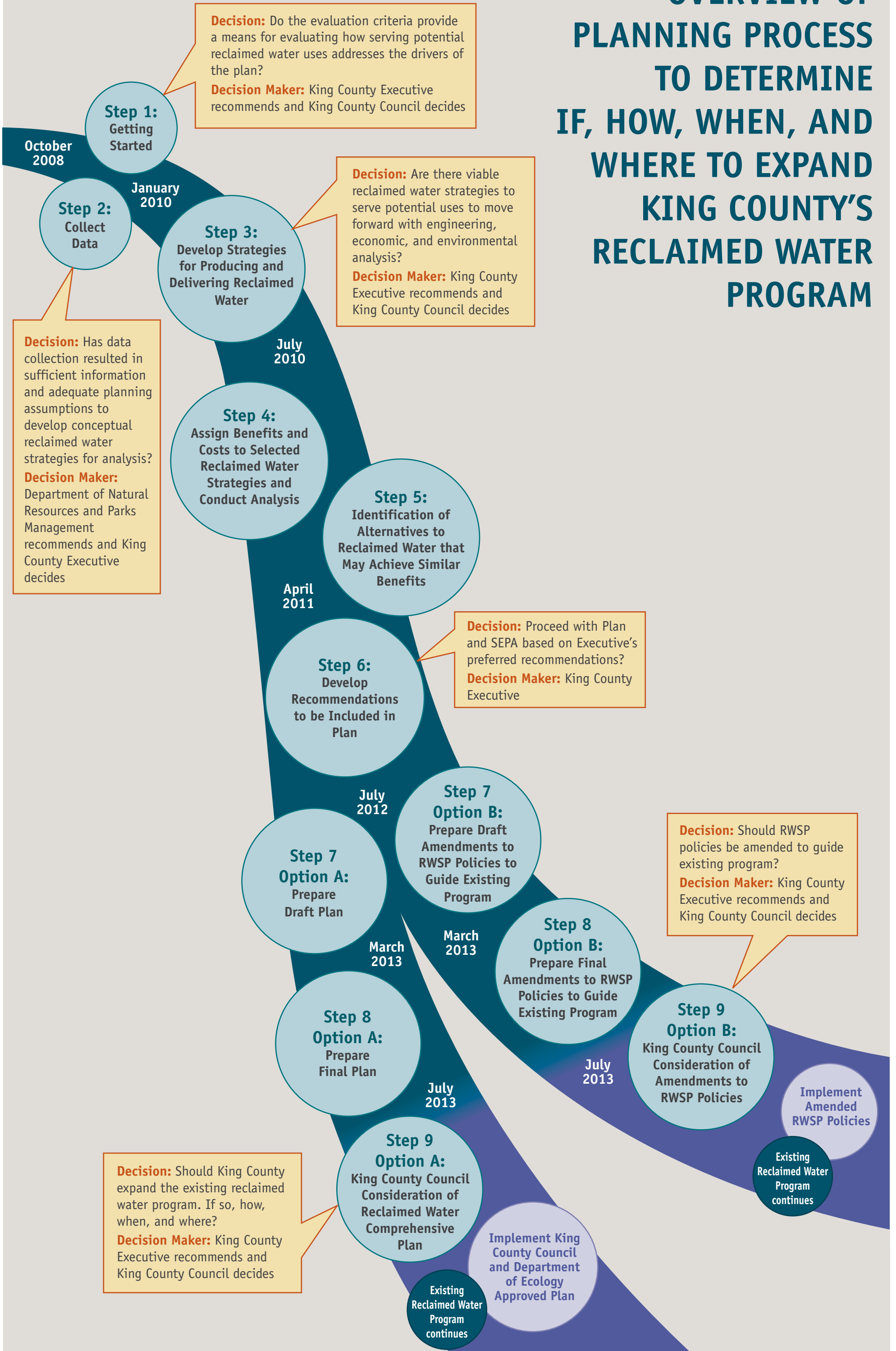
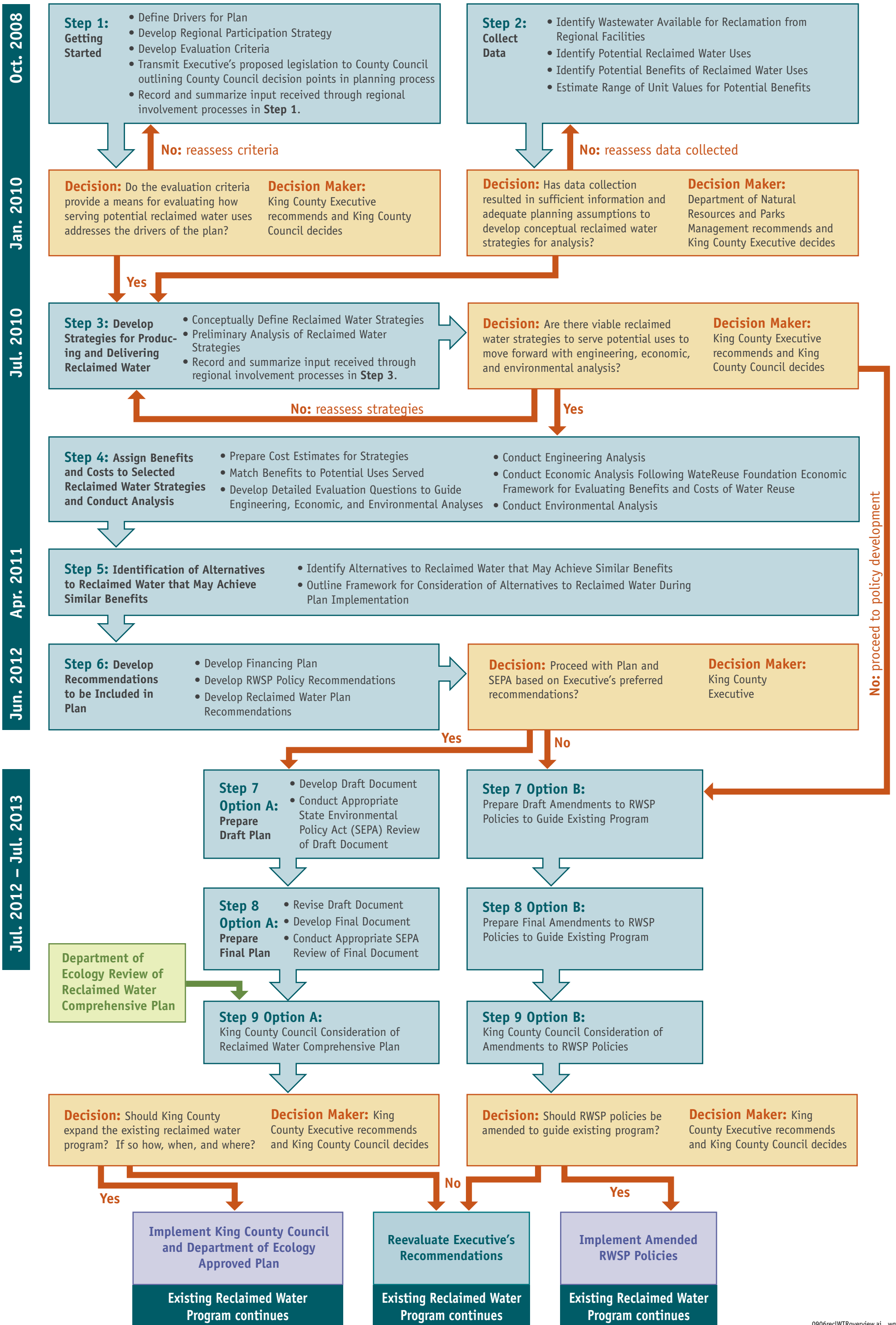


OVERVIEW OF PLANNING PROCESS TO DETERMINE IF, HOW, WHEN, AND WHERE TO EXPAND KING COUNTY'S RECLAIMED WATER PROGRAM



STEPS, TASKS, AND DECISION POINTS IN PLANNING PROCESS TO DETERMINE IF, HOW, WHEN, AND WHERE TO EXPAND KING COUNTY'S RECLAIMED WATER PROGRAM



DETAILED PLAN STEPS Including Regional Involvement and Expected Products (1 of 5)

STEP 1 Getting Started (Start: October 2008)

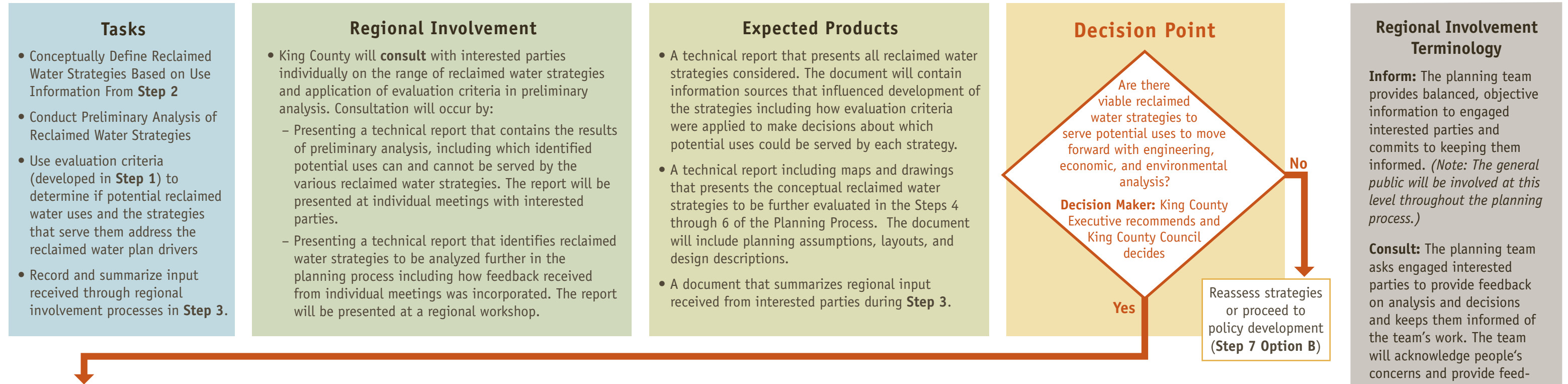
<p>Tasks</p> <ul style="list-style-type: none"> • Define Drivers for Plan • Develop Regional Participation Strategy • Develop Evaluation Criteria • Transmit Executive's proposed legislation to County Council outlining County Council decision points in planning process • Record and summarize input received through regional involvement processes in Step 1. 	<p>Regional Involvement</p> <ul style="list-style-type: none"> • King County will involve interested parties to develop the Plan's drivers through a series of individual meetings and regional workshops. Input from interested parties will shape development of the drivers for the Plan. King County may conduct follow up meetings with interested parties to explain how interested party input was used to develop the Plan's drivers. • King County will involve interested parties in developing the Plan's evaluation criteria. King County staff will present example evaluation criteria for review and comment at individual meetings and a regional workshop. Interested parties may submit comments at these events or via written response. • King County will inform interested parties at a regional workshop of the drivers for developing the reclaimed water comprehensive plan and revisions to evaluation criteria. This will include an explanation of how interested party input 	<p>Expected Products</p> <ul style="list-style-type: none"> • A paper that articulates the drivers for development of the Reclaimed Water Comprehensive Plan. • A paper that describes the regional participation strategy for involving interested parties during all steps of the planning process. • Executive Recommended Evaluation Criteria to be used in Steps 3 and 4 of the planning process for King County Council Consideration • Legislative Package Outlining County Council Decision Points in Planning Process • A document that summarizes regional input received from interested parties during Step 1. 	<p>Decision Point</p> <p>Do the evaluation criteria provide a means for evaluating how serving potential reclaimed water uses addresses the drivers of the plan?</p> <p>Decision Maker: King County Executive Recommends and King County Council decides</p> <p>Yes →</p> <p>No → Reassess criteria</p>	<p>Regional Involvement Terminology</p> <p>Inform: The planning team provides balanced, objective information to engaged interested parties and commits to keeping them informed. <i>(Note: The general public will be involved at this level throughout the planning process.)</i></p> <p>Consult: The planning team asks engaged interested parties to provide feedback on analysis and decisions and keeps them informed of the team's work. The team will acknowledge people's concerns and provide feedback on how input influenced planning outcomes.</p>
---	--	--	---	--

STEP 2 Collect Data (Completion: January 2010)

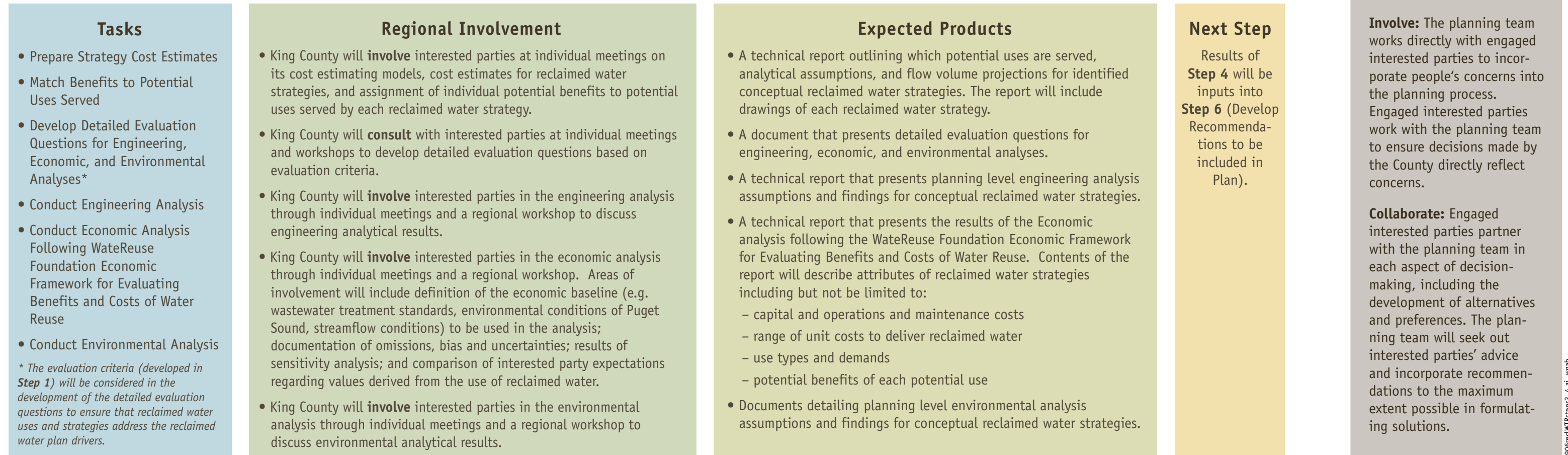
<p>Tasks</p> <ul style="list-style-type: none"> • Estimate Wastewater Available for Reclamation from Regional Facilities • Identify Potential Reclaimed Water Uses • Identify Potential Benefits that may result from the Production and Use of Reclaimed Water • Estimate Range of Unit Values for Potential Benefits 	<p>Regional Involvement</p> <ul style="list-style-type: none"> • King County will inform interested parties of wastewater flow modeling outputs by presenting its flow model structure and data sources at a regional workshop. • King County will collaborate with interested parties including cities, water purveyors, tribes, and industry representatives to identify potential consumptive and environmental enhancement uses for reclaimed water to be analyzed in the Plan. King County will obtain interested party input through individual meetings and a regional workshop. The revised list of potential uses based on feedback gathered at meetings and the workshop will be presented to interested parties at a separate workshop. Interested parties may provide input on potential environmental enhancement uses identified from existing studies, all identified potential reclaimed water uses, the potential benefits and estimated unit dollar value of each potential benefit at the individual meetings, regional workshop, and/or by submitting written comments. • King County will involve interested parties on the identification of potential benefits and estimated dollar value of each potential benefit at individual meetings. Input from interested parties on potential benefits identified and dollar values estimated will be incorporated into the planning process and presented at a regional workshop. 	<p>Expected Products</p> <ul style="list-style-type: none"> • A flow model capable of projecting the amount of wastewater available for reclamation in regional conveyance lines and at treatment plants. The model will be able to estimate projected wet-weather and dry-weather flow volumes for the reclaimed water comprehensive plan's 30-year horizon. • Technical report on areas within the region where surface and groundwater water resources that appear to have declining flows. The report will include a summary of regional input received. • A database of identified potential reclaimed water consumptive and environmental enhancement uses for analysis in the plan process. • Technical report that identifies the potential benefits associated with the production and use of reclaimed water and explains a range of estimated unit values for each potential benefit. Where sufficient valuation information is not available, the technical report also will describe the range of qualitative attributes estimated for potential benefits. The report will include a summary of regional input received. 	<p>Decision Point</p> <p>Has data collection resulted in sufficient information and adequate planning assumptions to develop conceptual reclaimed water strategies for analysis?</p> <p>Decision Makers: Department of Natural Resources and Parks Management recommends and King County Executive decides</p> <p>No → Reassess data collected</p> <p>Yes → Utilize Council Approved Evaluation Criteria and Data Collected in Step 3 (Develop Strategies for Producing and Delivering Reclaimed Water)</p>	<p>Involve: The planning team works directly with engaged interested parties to incorporate people's concerns into the planning process. Engaged interested parties work with the planning team to ensure decisions made by the County directly reflect concerns.</p> <p>Collaborate: Engaged interested parties partner with the planning team in each aspect of decision-making, including the development of alternatives and preferences. The planning team will seek out interested parties' advice and incorporate recommendations to the maximum extent possible in formulating solutions.</p>
---	---	--	--	---

DETAILED PLAN STEPS Including Regional Involvement and Expected Products (2 of 5)

STEP 3 Develop Strategies for Producing and Delivering Reclaimed Water (Start: January 2010 Completion: July 2010)



STEP 4 Assign Benefits and Costs to Selected Reclaimed Water Strategies and Conduct Analysis (Start: July 2010 Completion: April 2011)



DETAILED PLAN STEPS Including Regional Involvement and Expected Products (3 of 5)

STEP 5 Identification of Alternatives to Reclaimed Water that May Achieve Similar Benefits (Start: July 2010 Completion: April 2011)

Tasks	Regional Involvement	Expected Products	Next Step
<ul style="list-style-type: none"> Identify Alternatives to Reclaimed Water that may Achieve Similar Benefits Outline Framework for Evaluation of Alternatives to Reclaimed Water during plan implementation 	<ul style="list-style-type: none"> King County will collaborate with interested parties including cities, water purveyors, tribes, and industry representatives to develop a draft list of potential alternatives to the production and use of reclaimed water that could provide similar benefits. Interested parties will be able to offer input at their individual meetings, by submitting written comments and at a regional workshop. The revised list of alternatives based on feedback gathered at meetings and the workshop will be presented to interested parties at a regional workshop. King County will consult with interested parties at individual meetings to develop a framework for evaluations of alternatives to reclaimed water during plan implementation. Interested parties will be able to offer input at their individual meetings and/or by submitting written comments. A draft framework representing input received will be presented at a regional workshop. 	<ul style="list-style-type: none"> A report describing alternatives to the production and distribution of reclaimed water that are linked to the potential uses and identified benefits of various reclaimed water strategies developed in Step 4 of the reclaimed water planning process; and a framework for evaluation of the alternatives during plan implementation. 	<p>Products of Step 5 will be incorporated into Step 6.</p>

Regional Involvement Terminology

Inform: The planning team provides balanced, objective information to engaged interested parties and commits to keeping them informed. *(Note: The general public will be involved at this level throughout the planning process.)*

Consult: The planning team asks engaged interested parties to provide feedback on analysis and decisions and keeps them informed of the team's work. The team will acknowledge people's concerns and provide feedback on how input influenced planning outcomes.

Involve: The planning team works directly with engaged interested parties to incorporate people's concerns into the planning process. Engaged interested parties work with the planning team to ensure decisions made by the County directly reflect concerns.

Collaborate: Engaged interested parties partner with the planning team in each aspect of decision-making, including the development of alternatives and preferences. The planning team will seek out interested parties' advice and incorporate recommendations to the maximum extent possible in formulating solutions.



STEP 6 Develop Recommendations to be Included in Plan (Start: April 2011 Completion: June 2012)

Tasks	Regional Involvement	Expected Products	Decision Point
<ul style="list-style-type: none"> Develop Financing Plan Develop RWSP Policy Recommendations Develop Reclaimed Water Plan Recommendations 	<ul style="list-style-type: none"> King County will involve interested parties in: <ul style="list-style-type: none"> Development of a financing plan that identifies sources of funding for reclaimed water plan recommendations Issues to consider and suggestions for recommended amendments to existing RWSP reclaimed water policies Development of reclaimed water plan recommendations including reclaimed water strategies and potential uses served Consultation will occur through individual meetings. A draft financing plan, draft RWSP reclaimed water policies, and reclaimed water plan recommendations will be presented at a regional workshop. 	<ul style="list-style-type: none"> A document that presents draft policy recommendations and includes a summary of the process and regional input received to develop the draft policy recommendations. A financing plan that clearly identifies sources of funding for the reclaimed water plan recommendations. Contents of the plan will include but not be limited to: <ul style="list-style-type: none"> a description of the populations that benefit from the different potential consumptive and environmental enhancement uses of reclaimed water the estimated value, on average, of the benefits that identified populations receive a means or process for assigning cost recovery responsibility to the identified populations proposed options to recover reclaimed water costs for environmental enhancement benefits where no direct wastewater or reclaimed water customer exists A summary of regional input received. A document that contains reclaimed water plan recommendations and summary of regional input received. The recommendations will include reclaimed water strategy descriptions, capital and operation costs, revenue estimates, and financing strategy. 	<p>Decision Point</p> <p>Proceed with Plan and SEPA based on Executive's preferred recommendations? Decision Maker: King County Executive</p> <p>No → Proceed to Step 7 Option B (Prepare Draft Amendments to RWSP policies) or reassess strategies.</p> <p>Yes → Advance preferred reclaimed water strategies that could serve identified potential uses, RWSP policy recommendations, and financing plan to Step 7 Option A (Prepare Draft Plan).</p>

DETAILED PLAN STEPS Including Regional Involvement and Expected Products (4 of 5)

STEP 7 (Start: July 2012 Completion: February 2013)

Option A: Prepare Draft Reclaimed Water Comprehensive Plan

Tasks

- Develop Draft Reclaimed Water Comprehensive Plan including financing, program, and policy recommendations
- Conduct appropriate SEPA Review of Draft Reclaimed Water Comprehensive Plan

Regional Involvement

- **Consult** with interested parties on development of draft reclaimed water comprehensive plan at individual meetings.
- **Inform** with interested parties and the public of the draft reclaimed water comprehensive plan including financing, program, and policy recommendations through a regional workshop and public meetings.

Expected Products

- Draft Reclaimed Water Comprehensive Plan
- Draft SEPA Review Document
- A document that present a summary of regional workshop and public meetings

Next Step

Review of Draft Plan and associated policy recommendations by interested parties. Comments on Plan and associated policy recommendations are inputs to **Step 8 Option A**

Option B: Prepare Draft RWSP Reclaimed Water Policy Amendments

Tasks

- Develop Draft RWSP Reclaimed Water Policy Amendments

Regional Involvement

- **Consult** with interested parties on development of draft RWSP Reclaimed Water Policy Amendments to guide the existing program at individual meetings and a regional workshop.

Expected Products

- Draft RWSP Reclaimed Water Policy Amendments

Next Step

Review of RWSP Policy Amendments by interested parties' comments on policies are inputs to **Step 8 Option B**

Regional Involvement Terminology

Inform: The planning team provides balanced, objective information to engaged interested parties and commits to keeping them informed. *(Note: The general public will be involved at this level throughout the planning process.)*

Consult: The planning team asks engaged interested parties to provide feedback on analysis and decisions and keeps them informed of the team's work. The team will acknowledge people's concerns and provide feedback on how input influenced planning outcomes.

Involve: The planning team works directly with engaged interested parties to incorporate people's concerns into the planning process. Engaged interested parties work with the planning team to ensure decisions made by the County directly reflect concerns.

Collaborate: Engaged interested parties partner with the planning team in each aspect of decision-making, including the development of alternatives and preferences. The planning team will seek out interested parties' advice and incorporate recommendations to the maximum extent possible in formulating solutions.

STEP 8 (Start: March 2013 Completion: July 2013)

Option A: Prepare Final Comprehensive Plan

Tasks

- Revise Draft and Produce Final Reclaimed Water Comprehensive Plan including financing, program, and policy recommendations based on comments received
- Conduct appropriate SEPA Review of Final Reclaimed Water Comprehensive Plan

Regional Involvement

- **Inform** interested parties and public of how comments received on Draft Reclaimed Water Comprehensive Plan were addressed at individual meetings, public meetings, and regional workshop.

Expected Products

- Final Reclaimed Water Comprehensive Plan
- Final SEPA Review Document

Next Step

Executive Transmits Proposed Final Plan and associated policy recommendations to County Council

Option B: Final Amendments to RWSP Reclaimed Water Policies

Tasks

- Revise Draft and Produce Final RWSP Reclaimed Water Policy Amendments

Regional Involvement

- **Inform** interested parties of how comments received on the Draft RWSP Reclaimed Water Policy Amendments to guide existing program were addressed at individual meetings and regional workshop.

Expected Products

- Final RWSP Reclaimed Water Policy Amendments

Next Step

Executive Transmits Proposed Final Amendments to RWSP Polices to guide existing program to County Council

DETAILED PLAN STEPS Including Regional Involvement and Expected Products (5 of 5)

STEP 9 (Start: August 2013)

Option A: King County Council Consideration of Reclaimed Water Comprehensive Plan



Option B: King County Council Consideration of Amendments to RWSP Reclaimed Water Policies



Regional Involvement Terminology

Inform: The planning team provides balanced, objective information to engaged interested parties and commits to keeping them informed. *(Note: The general public will be involved at this level throughout the planning process.)*

Consult: The planning team asks engaged interested parties to provide feedback on analysis and decisions and keeps them informed of the team's work. The team will acknowledge people's concerns and provide feedback on how input influenced planning outcomes.

Involve: The planning team works directly with engaged interested parties to incorporate people's concerns into the planning process. Engaged interested parties work with the planning team to ensure decisions made by the County directly reflect concerns.

Collaborate: Engaged interested parties partner with the planning team in each aspect of decision-making, including the development of alternatives and preferences. The planning team will seek out interested parties' advice and incorporate recommendations to the maximum extent possible in formulating solutions.