



# Reclaimed Water Comprehensive Plan: Status of Potential Reclaimed Water Use Data

MWPAAC E&P Subcommittee Meeting  
April 1, 2009



**King County**

Department of Natural Resources and Parks  
**Wastewater Treatment Division**



# Comprehensive Plan Update

---

- Reviewing and revising purpose and need statement discussed at February E & P meeting
- Based on input received, also developing a detailed planning process document



# Potential Use Data Collection Update

---

- ❑ What is a potential reclaimed water use
- ❑ How potential uses fit into the reclaimed water comprehensive plan process
- ❑ How potential use information is being collected
- ❑ Status of potential use data collection



# Potential Use

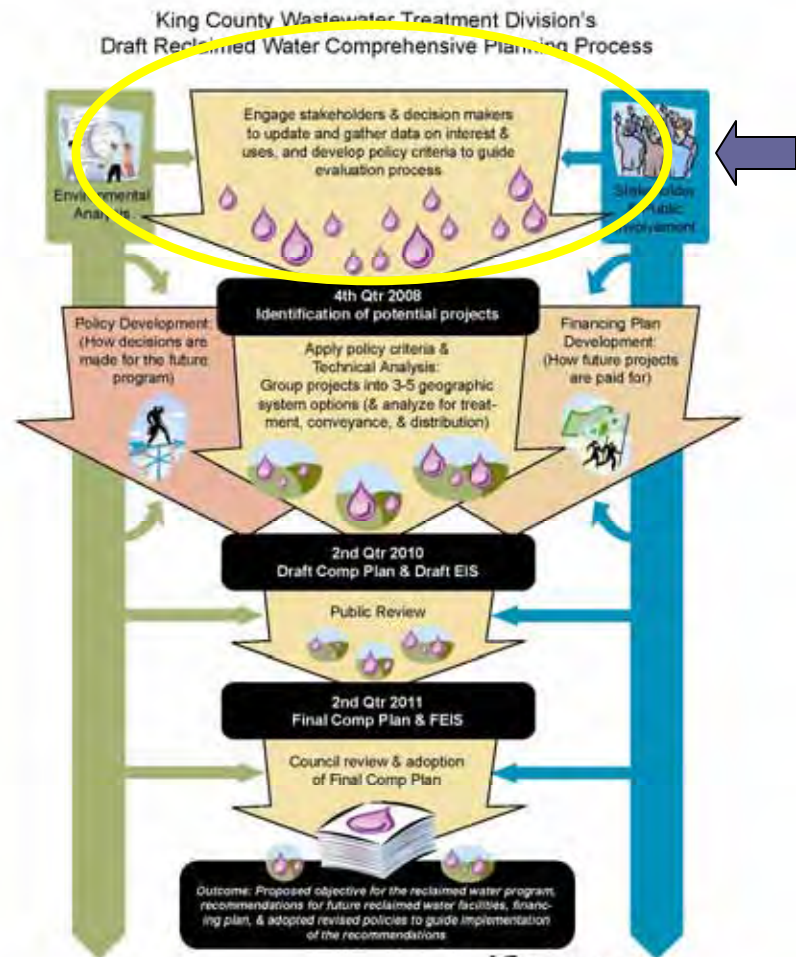
---

- Identified by interested parties or from existing documents
- A potential use is a water uses that reclaimed water could serve
  - *Nonpotable consumptive (irrigation, industrial)*
  - *Environmental enhancement (stream flow augmentation, wetland enhancement, groundwater recharge)*
- There is no implied preference or commitment on the part of any interested party or end user that actual reclaimed water use is intended



# Why Collect Potential Use Data

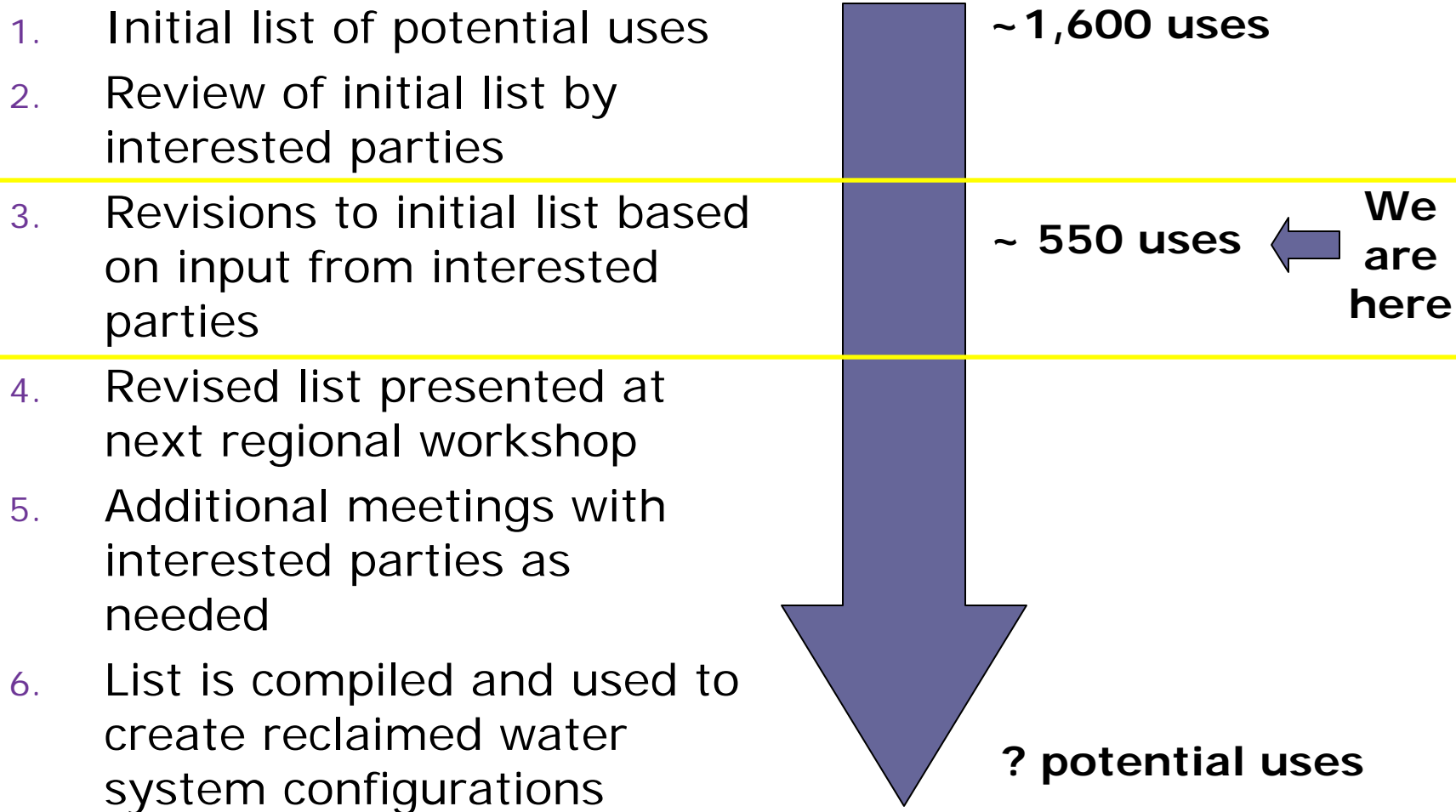
- Potential reclaimed water uses are a foundational piece of the planning process



We are here



# Process to Identify Potential Uses





# Summary of Meetings with Interested Parties

---

- Met with or plan to meet with 41 interest parties to discuss potential uses including:
  - Local governments
  - Water and wastewater utilities
  - Tribal governments
  - Industry representatives
    - Cement producers
    - Irrigation (nursery, golf courses)
  - Other
    - Agriculture commission
    - Forestry commission
    - Environmental groups



# Status of Potential Use Database

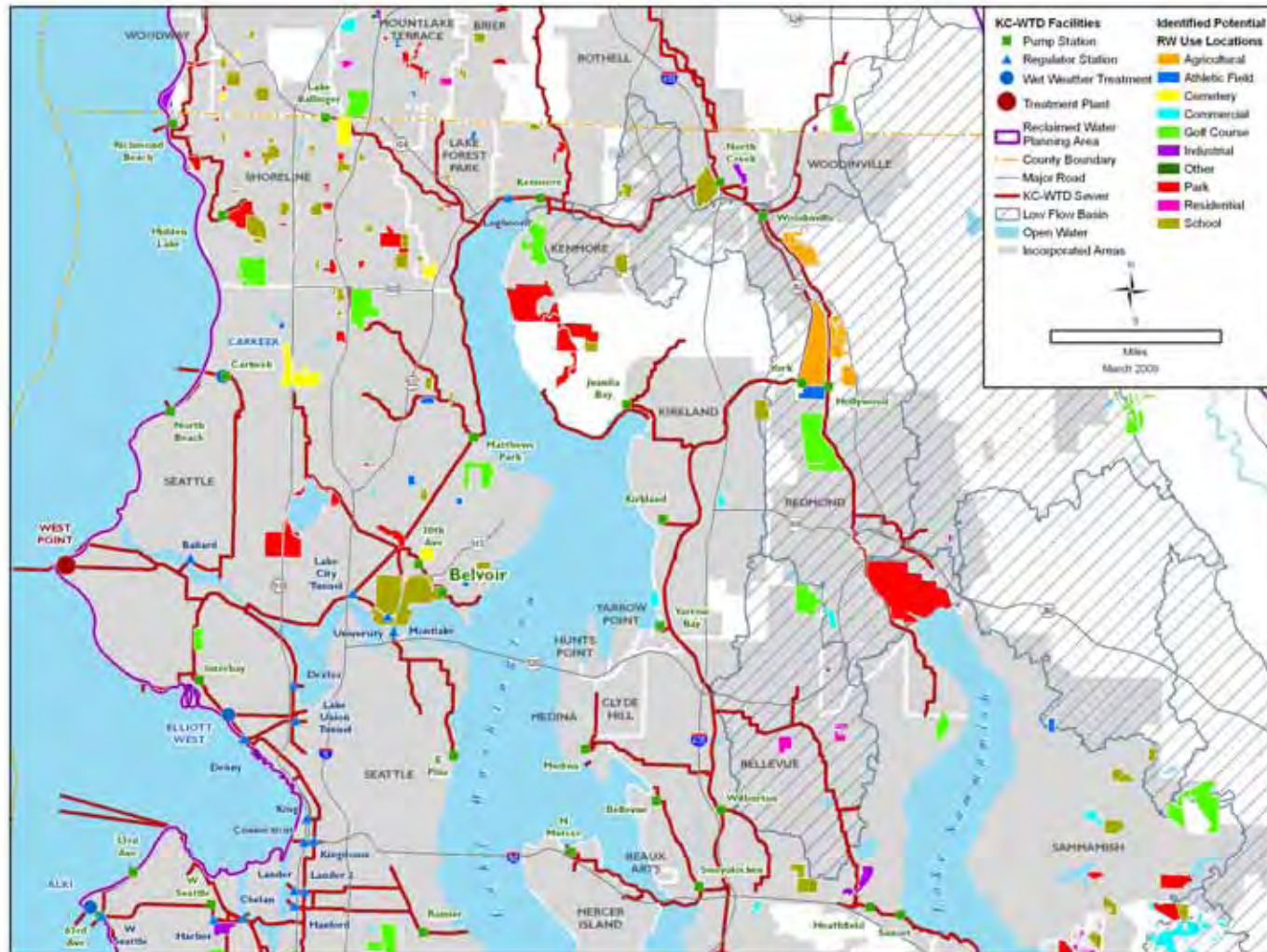
- Examples of nonpotable use data collected
  - Local agency reclaimed water studies/data
  - Local utility water billing records
- Example of database:

<i>Potable Water Purveyor in Area</i>	<i>Site Name</i>	<i>Site Address</i>	<i>City</i>	<i>ZIP</i>	<i>Verified Potential Use Site</i>	<i>Verify Site Source</i>	<i>Current Water Source</i>	<i>Category</i>	<i>Acreage For RW</i>	<i>Total Acres</i>	<i>Annual Volume</i>	<i>Peak Day Flow</i>	<i>Use Info Source</i>	<i>Notes</i>	<i>Parcel Number</i>
Renton	Thomas Teasdale Park	601 S 23rd St	Renton	98055				Park		9.73			KC GIS Land Use Information		3023059065
Renton	Tiffany Park	1902 Lake Youngs Way SE	Renton	98058				Park		5.27			KC GIS Land Use Information		2123059060
Renton	Tiffany Park Elementary	1601 Lake Youngs Wy SE	Renton	98058				School		9.78			KC GIS Land Use Information		2123059057
Renton	Virginia Mason Athletic Center (Seahawks HQ/hrs)	12 Seahawks Way	Renton	98056	Yes	Dave Christenson, City of Renton, discussion		Athletic Field		26.58			Dave Christenson, City of Renton, discussion; KC GIS Land Use Information		2924059001 2924059015



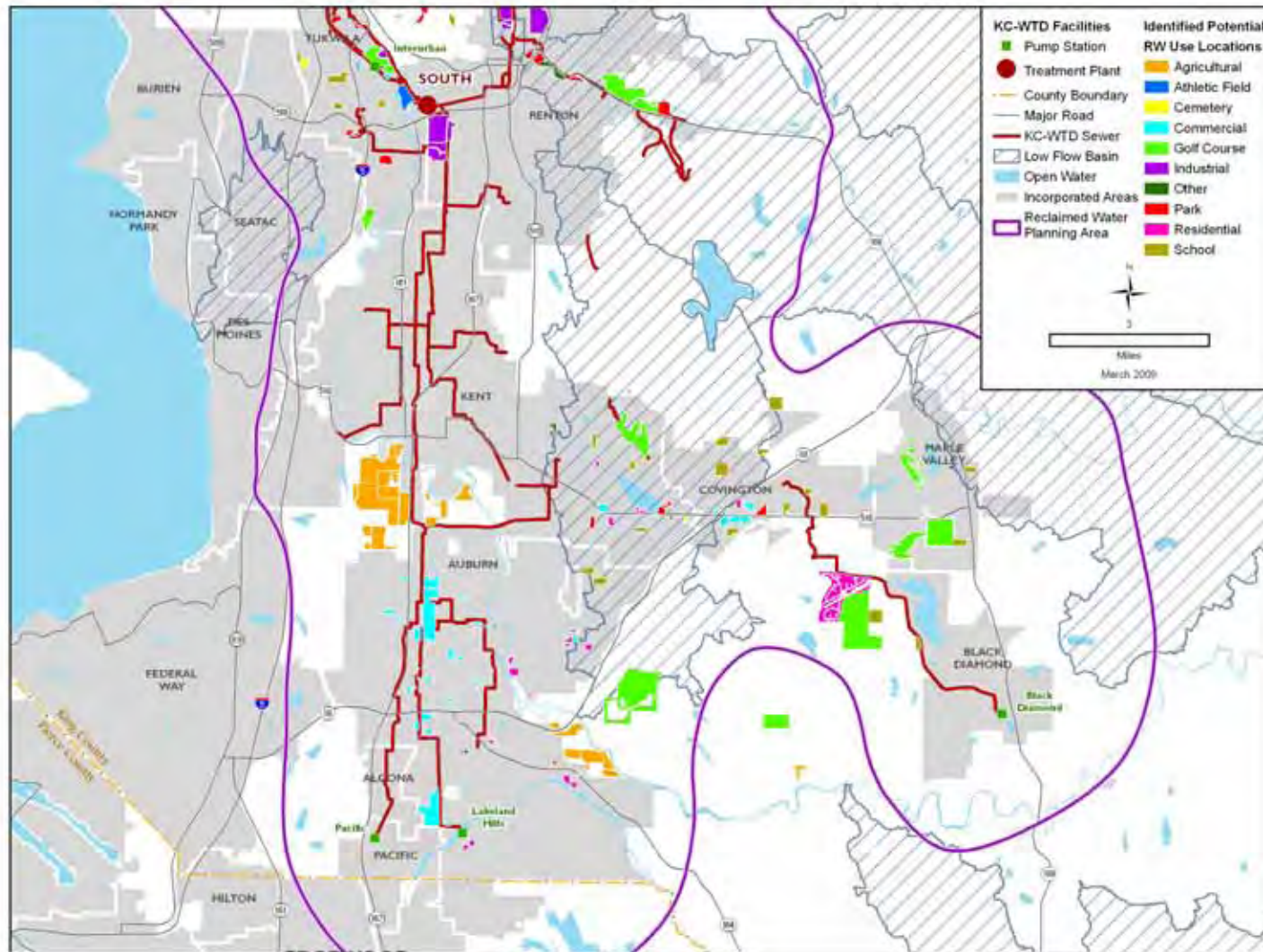


# Status of Potential Use Database (cont.)





# Status of Potential Use Database (cont.)





# Ongoing Potential Use Identification Work

---

- Meetings with interest parties
- Development of potential use data including volumes and seasonality
- Regional workshop to present and discuss potential use information