
Emergency Response During Large Storms

MWPAAC Briefing

September 24, 2008



King County

Department of
Natural Resources and Parks
**Wastewater Treatment
Division**

Objective of today's briefing

- Provide update on what King County's Wastewater Treatment Division is doing to prepare for emergency response during large storms.
-

Briefing Outline

- Current WTD Emergency Response (ER) Practices
 - December 2007 Storm
 - Enhancing Current WTD ER Practices
 - Considerations for Local Agencies
 - Questions and Discussion
-

Current WTD ER Practices

- The Regional Wastewater Services Plan states in part:

“In the event of a raw sewage overflow, the county shall initiate a rapid and coordinated response, including notification of public health agencies, the media, the public, and affected jurisdictions.....”

Current WTD ER Practices

- Incident command structure
- Overflow manual and plant emergency procedures
- Subscribe to weather forecasts



Current WTD ER Practices

- Preventative maintenance at facilities
 - Spare rotating elements rebuilt, on the shelf
 - Critical work orders completed
 - Ensure lead and backup equipment is available - authorize overtime as needed
 - 24 hours of fuel for standby generators
 - Some exceptions
-

Current WTD ER Practices

- Assign additional staff to standby with vehicles
 - Pre-planned inspection routes for conveyance system
 - On-call emergency repair and clean up contracts
 - Trouble call system for water quality monitoring
-

December 2007 Storm

- Sea-Tac rainfall - just under 4 inches
 - Very high system flows: exceeded 20-year peak flow design standard in many areas
 - Wide spread urban flooding impacts county facilities
-

December 2007 Storm



Urban flooding – Carkeek CSO Treatment Plant

December 2007 Storm

- Community impacts - flooding of streets, homes & businesses, debris fields, closed parks
 - Operating staff maxed out with system needs; needed to add depth to response
 - Follow-up (claims, communications, cleanup) continued until June 2008
-



Coal Creek – During storm



Coal Creek – After storm

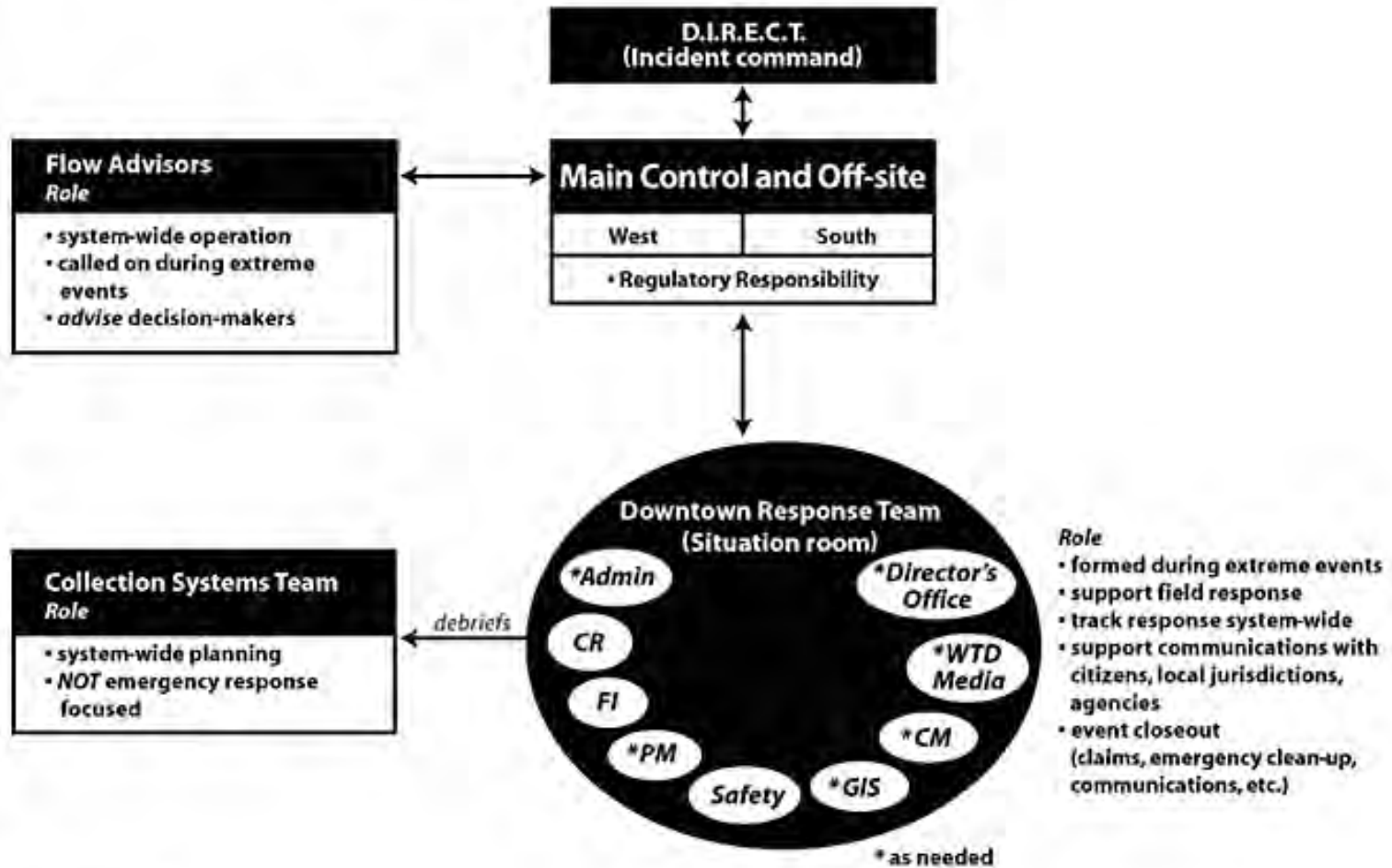
December 2007 Storm

- After the event, lessons learned session held and cross-divisional team formed
 - Goal: Recommend improvements to WTD emergency response activities, focusing on response to large storms that impact multiple facilities
-

Enhancing Current ER Practices

- WTD-wide training/tabletop exercise scheduled; annual updates planned
 - Formalize pre-storm huddles/wet weather briefings
 - Increase/formalize downtown support of operational staff (add depth)
-

WTD Emergency Response Roles



Enhancing Current ER Practices

- Update public information materials
 - Dealing with sewage spills
 - Who to call for various emergencies
 - Update agency notification practices
 - Review and reinforce training on emergency cleanup procedures
-



Emergency cleanup of home in Matthews Beach area

Enhancing Current ER Practices

- Collaborate with health department to improve practices for beach closure/posting



Considerations for Local Jurisdictions

- Call Main Control at West Point and South Plant 24/7 – they lead incident response
 - South Plant – 206-684-2404
 - West Point – 206-263-3801
 - Educate your customers about who to call for various emergencies – sewers, storm drains, power and water utilities
-

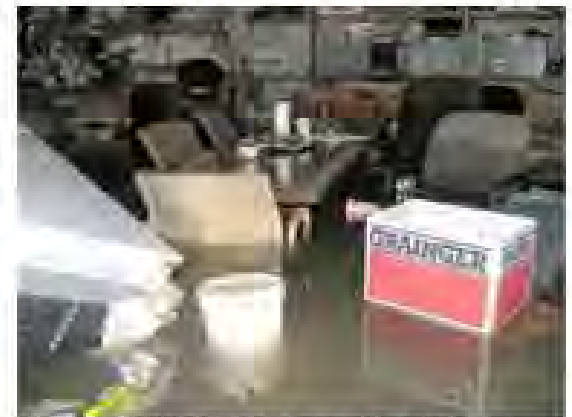


Sewer Spill Response

King County provides wastewater treatment services to [34 local jurisdictions and sewer districts](#). Wastewater collected by local sewer agencies is [transported to county treatment facilities](#) through pipes owned and maintained by the county.

Sewer spills are caused most often by clogged or broken pipes belonging to private owners. On rare occasions, problems in pipes owned by local sewer agencies or the county can result in sewer spills on private property. **The King County Wastewater Treatment Division recommends taking the following steps in the event of a sewer spill in your home:**

- Think safety first
- [Limit exposure](#)
- [Call for help](#)
- [Clean up safely](#)
- [Learn more about sewer spills](#)



The first step in responding to a sewer overflow is to protect yourself and your loved ones.

Considerations for Local Jurisdictions

- Subscribe to weather forecast service
 - Use last storm's experience for planning for the next one
 - Put information on your Web page about sewage spill precautions
 - Share your thoughts and ideas
-

Questions and Discussion
