



**King County**

# BFI WINTER OPERATIONS 2013

KING COUNTY INTERNATIONAL AIRPORT/ BOEING FIELD  
November 12, 2013

# Objectives

- ☐ Winter Season 2013 preparation
- ☐ Airfield Priorities
- ☐ Communication
- ☐ Deicing
- ☐ Safety Tips
- ☐ Equipment

# 2013 Winter Season Preparation

- Snow and Ice Control Plan (SICP) training currently underway for
  - Airport Operations
  - ARFF
  - Maintenance
  - Air Traffic Control
- Review- Changes and the SICP with tenants
- Initial and recurrent training- ARFF, Maintenance, and Operations
- Winter fleet preparation

# Personnel

- Operations, Maintenance, and ARFF responsible for monitoring adverse weather
- At minimum one Airport Duty Manager and one maintenance personnel on site during forecasted winter conditions
- On the onset of adverse weather Operations and Maintenance will revert to 2- 12 hour shifts to provide continuous coverage

# Personnel

- Air Traffic Control Tower (ATCT)- work with Operations- coordinate closures, report changing conditions via Pilot Braking Action Reports
- Snow Team (Operations and Maintenance)- responsible for clearing snow and ice on contaminated surfaces
- Airport Operations- disseminating Notams, updating tenants on status of airport runways, taxiways, and aprons.

# Winter Season 2011 (weather facts)

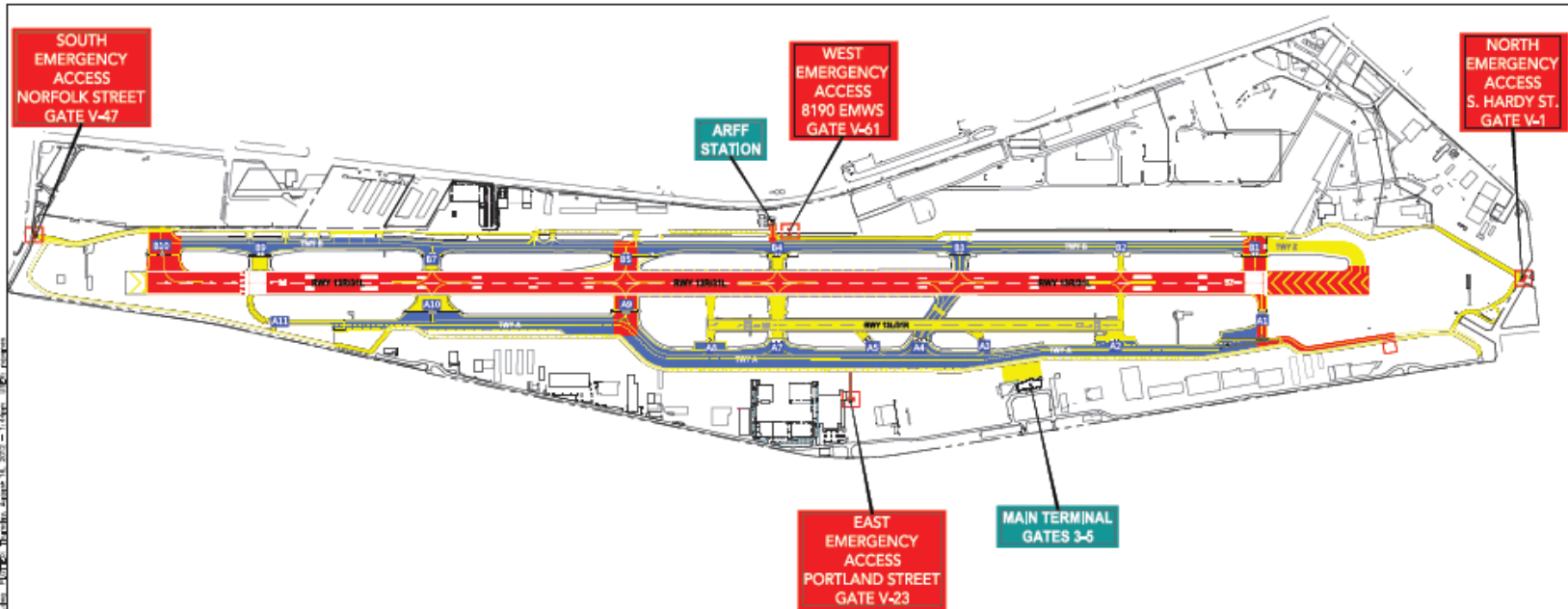
- ❑ No snow for the year of 2012
- ❑ *2013 Winter season*

# Airfield Clearing Priorities

- Priority 1- RWY 13R/31L, TWY int A1, A9, B1, B5, B10 & Taxilane A- (Airlift Northwest), ARFF access and Emergency Gates
- Priority 2- TWY int A4, B3, TWY A & B
- Priority 3- RWY 13L/31R, Terminal ramp, service road, special use pavement and all other TWY intersections

\*Snow removal addressed by priority beginning with Priority 1

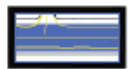
# Airfield Priorities



## LEGEND



**PRIORITY 1:** Primary Runway 13R/31L (including edge lights, threshold lights & markings)  
Taxiway Intersections A1, A9, B1, B5, B10 & Taxiway A-Airfield Northwest  
ARFF Station Access (driveway), Emergency Access Gates.



**PRIORITY 2:** Taxiway Alpha (full length)  
Taxiway Bravo (full length)  
Taxiway Intersections A4, B3



**PRIORITY 3:** Vehicle Service Road  
Terminal Ramp (Gates 3-5)  
Utility Runway 13L/31R (full length & width)  
Taxiway Intersections A2, A3, A5, A7, A8, A10, A11, B2, B4, B7, B9 & ZULU

SNOW & ICE PLAN | AIRFIELD PRIORITY MAP  
APPENDIX 1

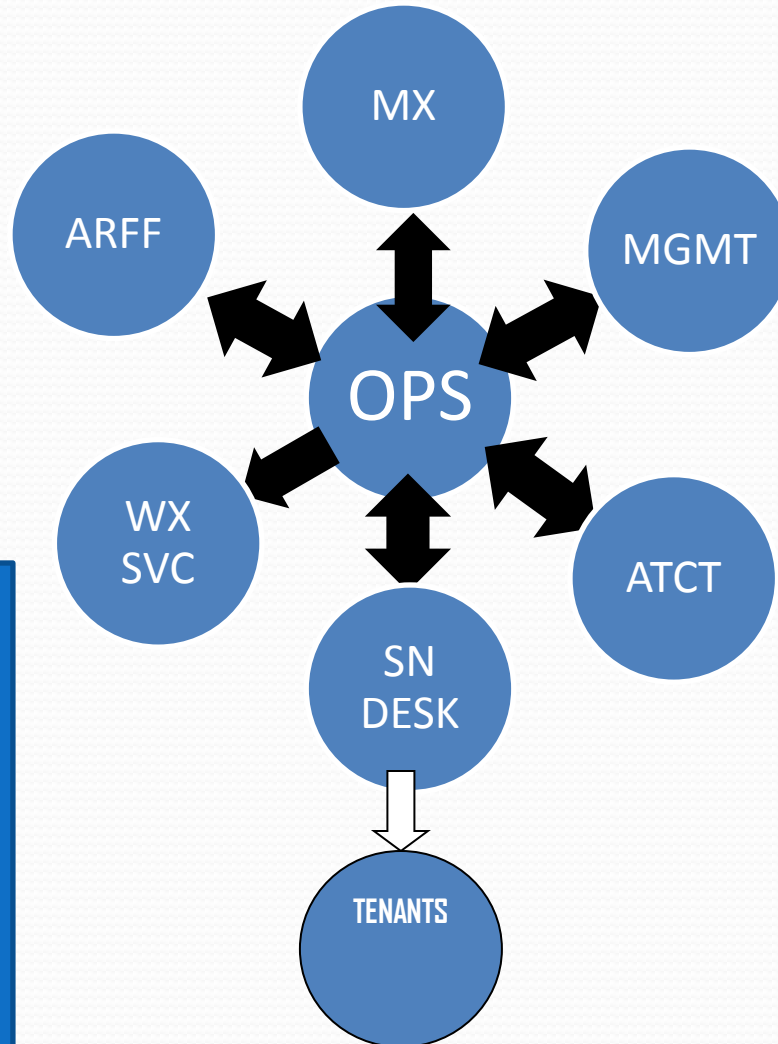


**King County**  
International Airport Boeing Field

# Other Priorities

- Tenants responsibility, Fixed based Operators (FBO's), and other leaseholders for removal of snow
- Coordination of snow /ice removal will made with Airport Operations when required

# Communication



ARFF- Aircraft Rescue and Fire Fighting  
WX - National Weather & Services & DTN  
OPS- Airport Operations  
ATCT – Air Traffic Control Tower  
MX- Maintenance  
Snow desk

# Snow Control Center/ Snow Desk

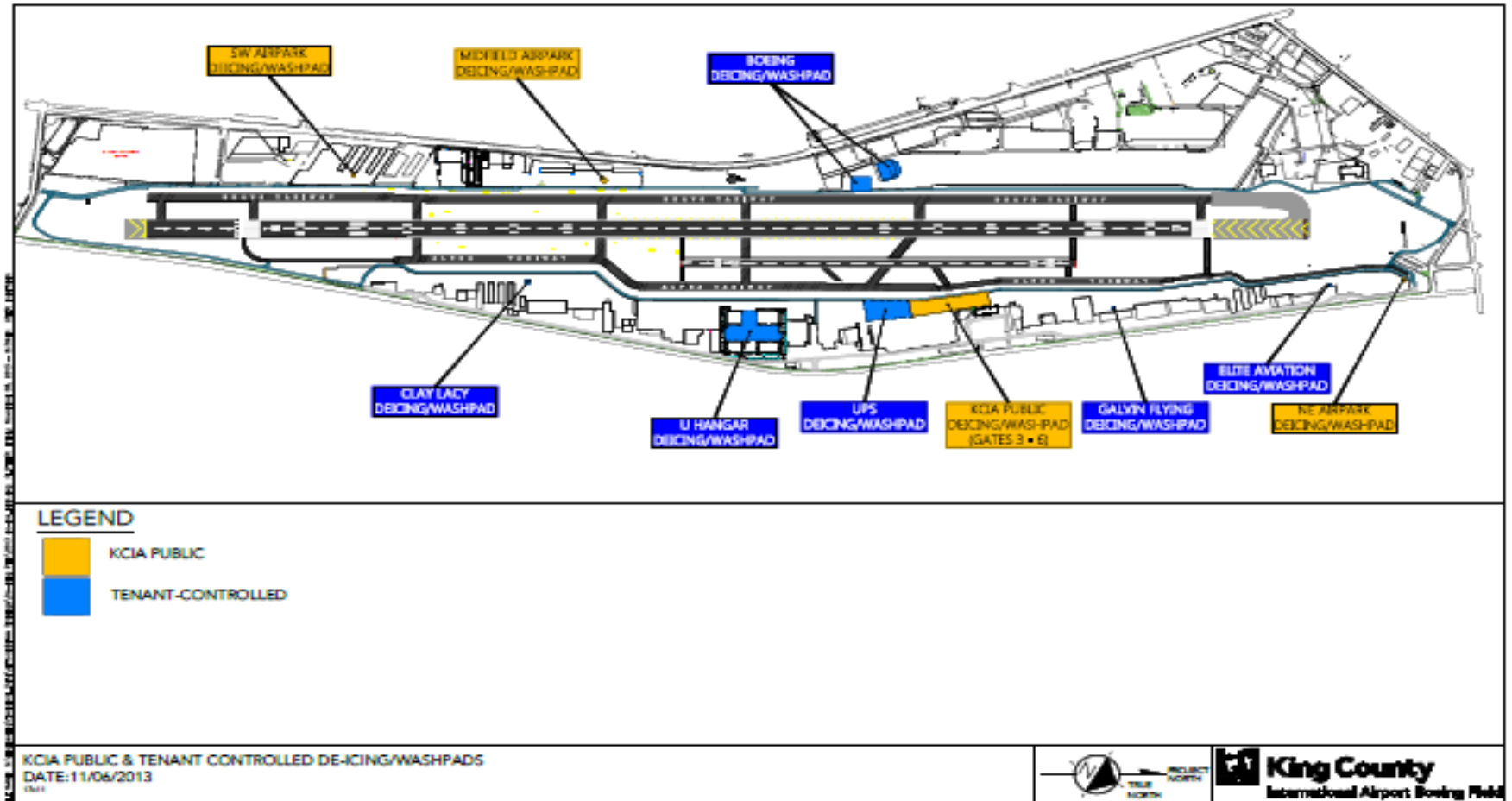
- Located in the Emergency Operations Center (EOC), 2<sup>nd</sup> floor of the main terminal in Airport Administration
- Serves as a gateway of communication between the tenants and snow team.
- Mobile snow desk during light events
- Duties include
  - Issue and disseminate Notams
  - Updated Field Condition Reports
  - Management Notification
  - Tenant Request and inquiries
  - Current and forecasted weather
  - Provide timely and accurate information to tenants via telephone or website

# Aircraft Deicing



- Gates 3-6 public use deicing
- Other approved deicing areas on the AOA are included on the map
- Contact Airport Operations (206.296.7334) **PRIOR** to deicing
- Airport's deicing pad is active between the months of November and February

# Deicing Locations



# Safety Tips

- Vehicular speed while operating on the service road
- Ramp Safety around aircraft/ push back of aircraft
- Obscured signs and markings
- Reduced visibility during blizzard like conditions
- Reduced visibility from snow equipment



# Runway Closures

- Any contaminant (Snow, Slush, Ice,) on the Runway once accumulation begins of greater than 1/8 in would require Snow removal to occur
- Occasional Runway 13R/31L closures would need to occur to clear contaminants off the Runway and work on Priority 1 area.
- Operations closely coordinates with ATCT to ensure this is done. In addition to this, they coordinate with SEA to ensure that the closures are not simultaneous
- Clearing times vary depending on the contaminant on the Runway

# Pilot Braking Action Reports

- Air Traffic passes pilot Braking Action reports during snow events to Airport Operations personnel
- Information given could denote an upward or downward trend to the airfield surfaces
  - BA Good
  - BA Fair
  - BA Poor
  - BA Nil

# Upcoming Training

- Tabletop Exercise in November- Maintenance and Operations
- Runway Friction Tester Training- ARFF and Operations- November
- Winter Briefings- Air Traffic and Airport Operations – December
- Post Storm meetings- as needed with ATCT and Airport Operations, and Maintenance
- Post Season meetings- as needed with the Snow and Ice Control Committee (ATCT, Maintenance, Airport Operations and/or tenants)

# Fleet Practice

## Dry Runs :

- Joint training with Maintenance and Airport Operations with Winter Fleet
- Working on formation, tactical improvement
- Communication between fleet, snow desk
- Occur once to twice per week beginning late November through January
- No impact to traffic



# Equipment

2012

acquisition

- Runway broom
- Runway blower
- Bulk storage deicing tank



# Equipment

- KCIA has on hand for the 2012 winter season
  - 18000 gallons of Liquid Deicer- E36
  - 4 plows
  - 2 blowers
  - 1 grader
  - 1 runway deicer truck- 1100 gallon truck
  - Solid Deicer Naac- 6600 lbs
  - 1 Vericom Decelerometer- Runway Friction Tester (RFT)  
Vericom 4000

# CONTACT INFO

- Airport Operations- 206.296.7334
- Airport Administration- 206.296.7380
- Environmental-206.296.7597
- Airport Police- 206.296.7392
- SICP data- 206.296.7458 or [michele.mwangemi@kingcounty.gov](mailto:michele.mwangemi@kingcounty.gov)

