

## Adolescent births

### King County, 2008-2012 average

Description: Births to Females Ages 15 - 17

Trend over time: 2008-2012: falling

Source: Birth Certificate Data, Washington State Department of Health, Center for Health Statistics.

**Most recent data (2012):** 6.3 cases per 1,000 in King County, including 212 cases.

	Rate	Lower CI	Upper CI	Count per Year
<b>King County</b>	8.1	7.7	8.6	274
<b>Race/Ethnicity</b>				
AIAN	20.4	15.1	27.0	10
Asian	3.8	3.1	4.7	19
Black	11.0	9.3	12.9	31
Hispanic	31.1	28.7	33.7	122
Multiple	9.3	7.8	11.0	26
NHPI	19.3	13.9	26.1	8
White	7.4	6.9	7.9	166
<b>Neighborhood Poverty</b>				
High	21.4	19.5	23.6	87
Medium	8.2	7.7	8.8	167
Low	2.2	1.8	2.6	20
<b>Region</b>				
East	2.8	2.3	3.3	27
North	4.0	2.9	5.3	9
Seattle	7.3	6.4	8.3	48
South	12.7	11.9	13.5	189

#### Notes:

N/A: Not available

\* Too few cases to protect confidentiality and/or report reliable rates

§ Too few cases to meet precision standard, interpret with caution

CI is 95% Confidence Interval

Rate = Births per 1,000 females ages 15-17

Prepared By: Public Health - Seattle & King County;

Assessment, Policy Development, & Evaluation, 1/2015

**Adolescent births  
2008-2012, average**

Source: Birth Certificate Data, Washington State Department of Health, Center for Health Statistics.

Health Reporting Area	Rate	Lower CI	Upper CI	Count per Year
<b>King County</b>	8.1	7.7	8.6	274
<b>Auburn</b>	14.2	11.5	17.3	19
Auburn-North	7.6	5.2	10.8	6
Auburn-South	23.8	18.5	30.3	13
Bear Creek/Carnation/Duvall	1.4	0.7	2.6	2
<b>Bellevue</b>	3.8	2.8	5.1	9
Bellevue-Central	10.3	6.8	15.0	5
Bellevue-NE	3.4	1.6	6.3	2
Bellevue-South	1.4	0.5	3.0	1
Bellevue-West	*	*	*	*
Black Diamond/Enumclaw/SE County	8.5	6.3	11.3	10
Bothell/Woodinville	4.2	2.3	7.1	3
Burien	17.8	14.2	21.9	17
Covington/Maple Valley	2.2	1.3	3.6	3
Des Moines/Normandy Park	14.5	10.8	19.1	10
East Federal Way	10.0	7.4	13.2	10
Fairwood	4.1	2.1	7.3	2
<b>Federal Way</b>	14.1	11.9	16.6	28
Fed Way-Central/Military Rd	12.8	10.1	15.9	16
Fed Way-Dash Pt	16.3	12.5	21.0	12
Issaquah	2.1	0.7	4.9	1
Kenmore/Lake Forest Park	3.6	1.9	6.2	2
<b>Kent</b>	14.1	12.1	16.3	36
Kent-East	10.5	7.6	14.0	9
Kent-SE	13.6	10.9	16.8	17
Kent-West	22.5	16.7	29.7	10
<b>Kirkland</b>	4.2	2.7	6.1	5
Kirkland	4.0	2.1	6.8	3
Kirkland North	4.4	2.3	7.4	3
Mercer Isle/Pt Cities	0.0	0.0	1.0	0
Newcastle/Four Creeks	2.8	1.2	5.4	2
North Highline	19.9	13.8	27.8	7
Redmond	6.3	4.1	9.3	5
<b>Renton</b>	15.0	12.6	17.7	27
Renton-East	11.6	7.9	16.6	6
Renton-North	17.7	12.4	24.5	7
Renton-South	15.7	12.2	19.9	14
Sammamish	*	*	*	*
SeaTac/Tukwila	22.0	17.8	27.0	18
<b>Seattle</b>	7.3	6.4	8.3	48
Ballard	1.9	0.6	4.4	1
Beacon/Georgetown/S Park	12.2	8.8	16.5	8
Capitol Hill/Eastlake	*	*	*	*
Central Seattle	14.1	10.1	19.3	8
Delridge	15.0	10.7	20.5	8
Downtown	19.8	10.8	33.1	3
Fremont/Greenlake	3.5	1.3	7.4	1
NE Seattle	*	*	*	*
North Seattle	6.9	4.2	10.8	4
NW Seattle	7.8	4.6	12.3	4
Queen Anne/Magnolia	*	*	*	*
SE Seattle	12.2	8.9	16.3	9
West Seattle	2.3	0.9	4.7	1
Shoreline	4.1	2.5	6.3	4
Snoqualmie/N.Bend/Skykomish	3.3	1.8	5.4	3
Vashon Island	*	*	*	*

**Notes:**

Higher than King County

Lower than King County

\* Too few cases to protect confidentiality and/or report reliable rates

§ Too few cases to meet precision standard, interpret with caution

CI is 95% Confidence Interval

Rate = Births per 1,000 females ages 15-17

Prepared By: Public Health - Seattle & King County;  
Assessment, Policy Development, & Evaluation, 1/2015

## Adolescent births by comparison areas

Source: Birth Certificate Data, Washington State Department of Health, Center for Health Statistics.

*There is no Healthy People 2020 Objective.*

	<b>Latest Available Year</b>	<b>Rate</b>	<b>Lower CI</b>	<b>Upper CI</b>
United States	2013	12.3		
Washington State	2013	8.9	8.4	9.4
<b>King County</b>	<b>2013</b>	<b>5.4</b>	<b>4.6</b>	<b>6.2</b>

### Notes:

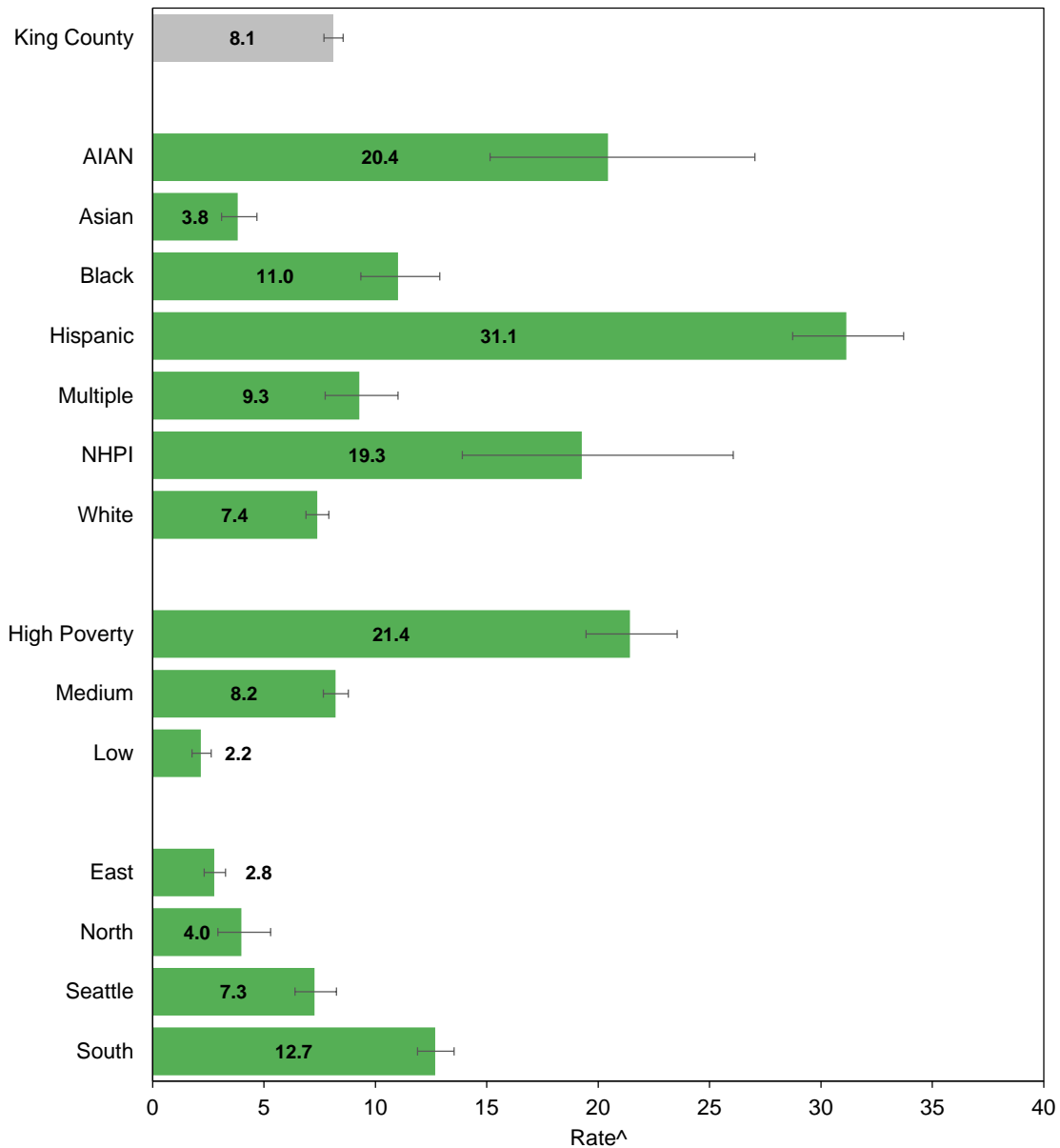
N/A: Not available

CI is 95% Confidence Interval

Rate = Births per 1,000 females ages 15-17

Prepared By: Public Health - Seattle & King County;  
Assessment, Policy Development, & Evaluation, 1/2015

## Adolescent births, King County, 2008-2012 average



Source: Birth Certificate Data, Washington State Department of Health, Center for Health Statistics

Prepared by: Public Health Seattle & King County, Assessment, Policy Development, & Evaluation, 1/2015

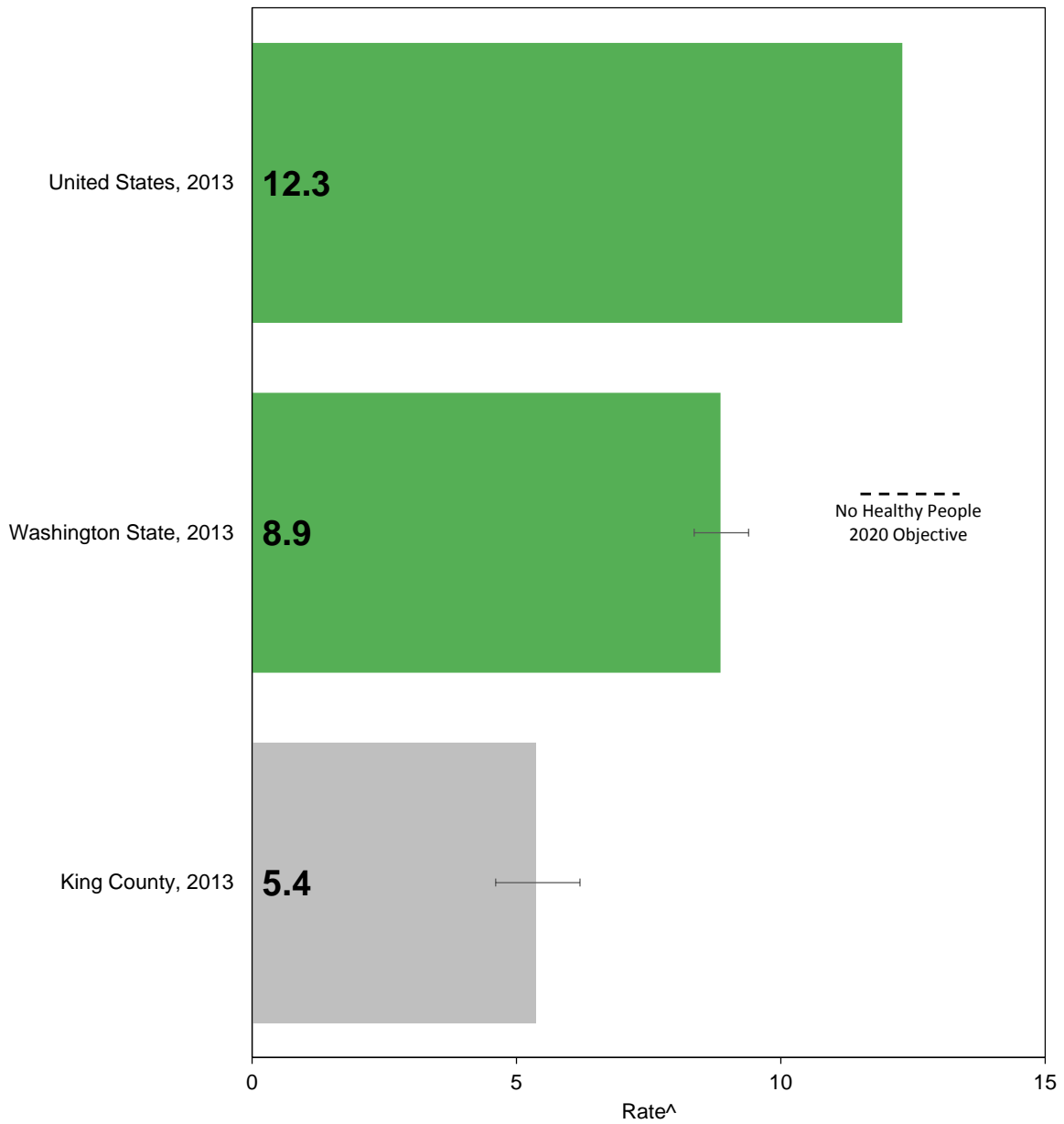
|----|: Confidence interval shows range that includes true value 95% of the time

\* Too few cases to protect confidentiality and/or report reliable rates

§ Too few cases to meet precision standard, interpret with caution

^ Rate = Births per 1,000 females ages 15-17

## Adolescent births by comparison areas



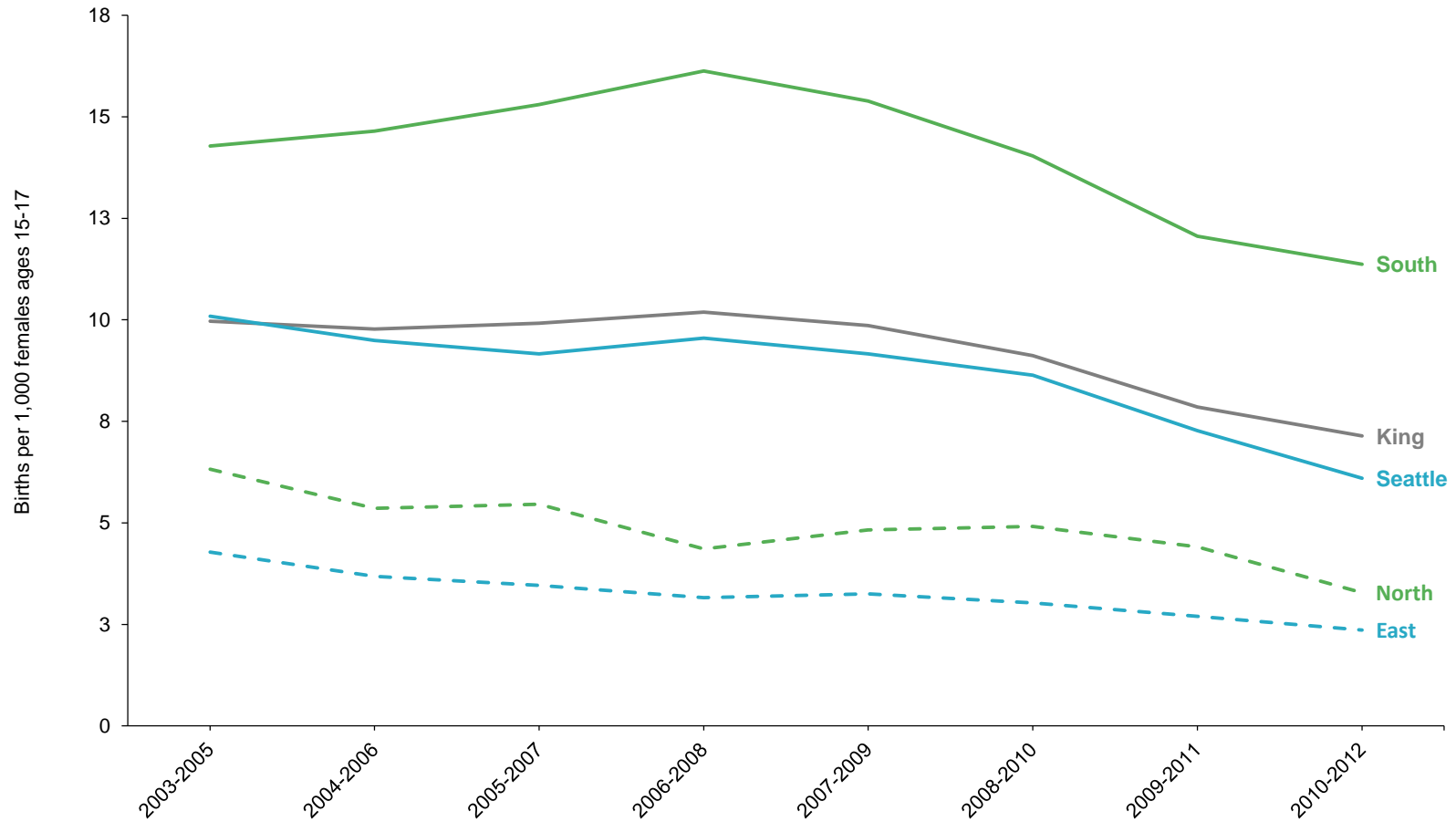
Source: Birth Certificate Data, Washington State Department of Health, Center for Health Statistics.

Prepared by: Public Health Seattle & King County, Assessment, Policy Development, & Evaluation, 1/2015

[-|-|-|-]: Confidence interval shows range that includes true value 95% of the time

^ Rate = Births per 1,000 females ages 15-17

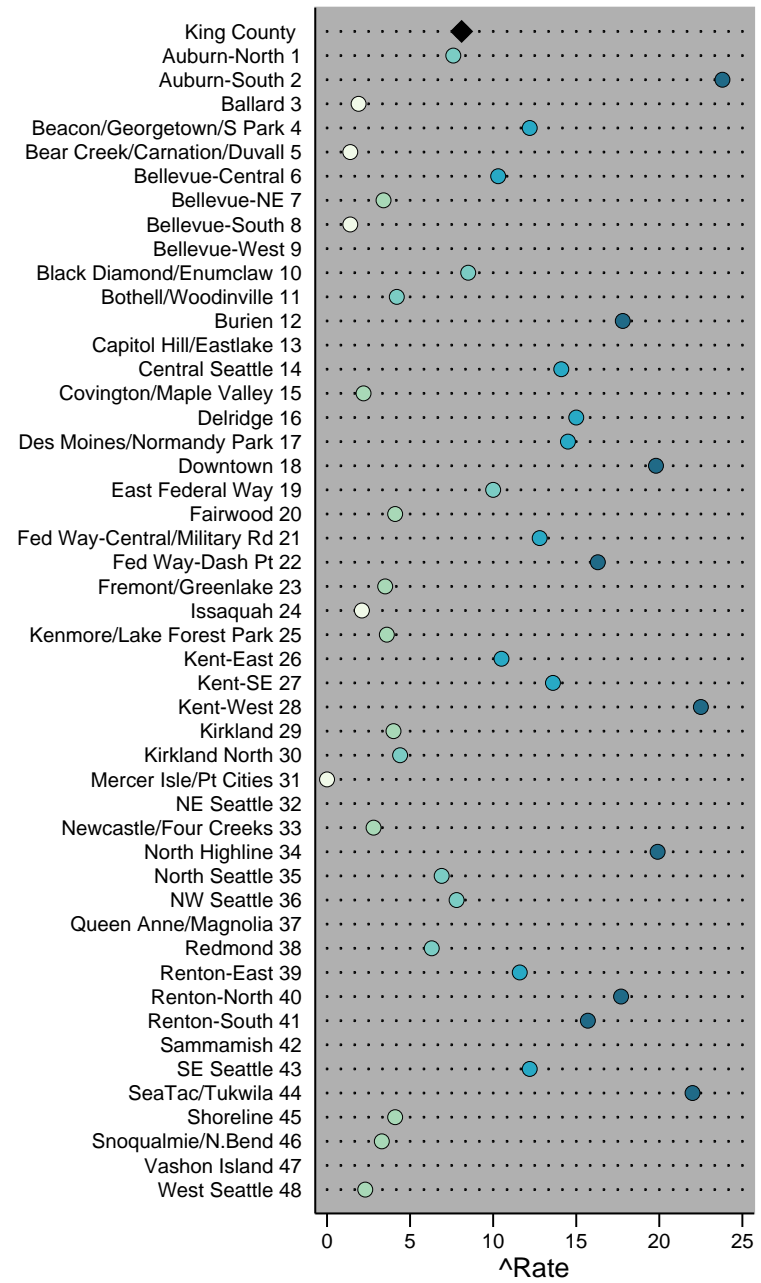
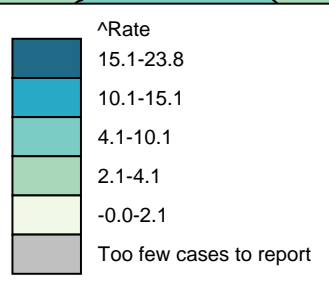
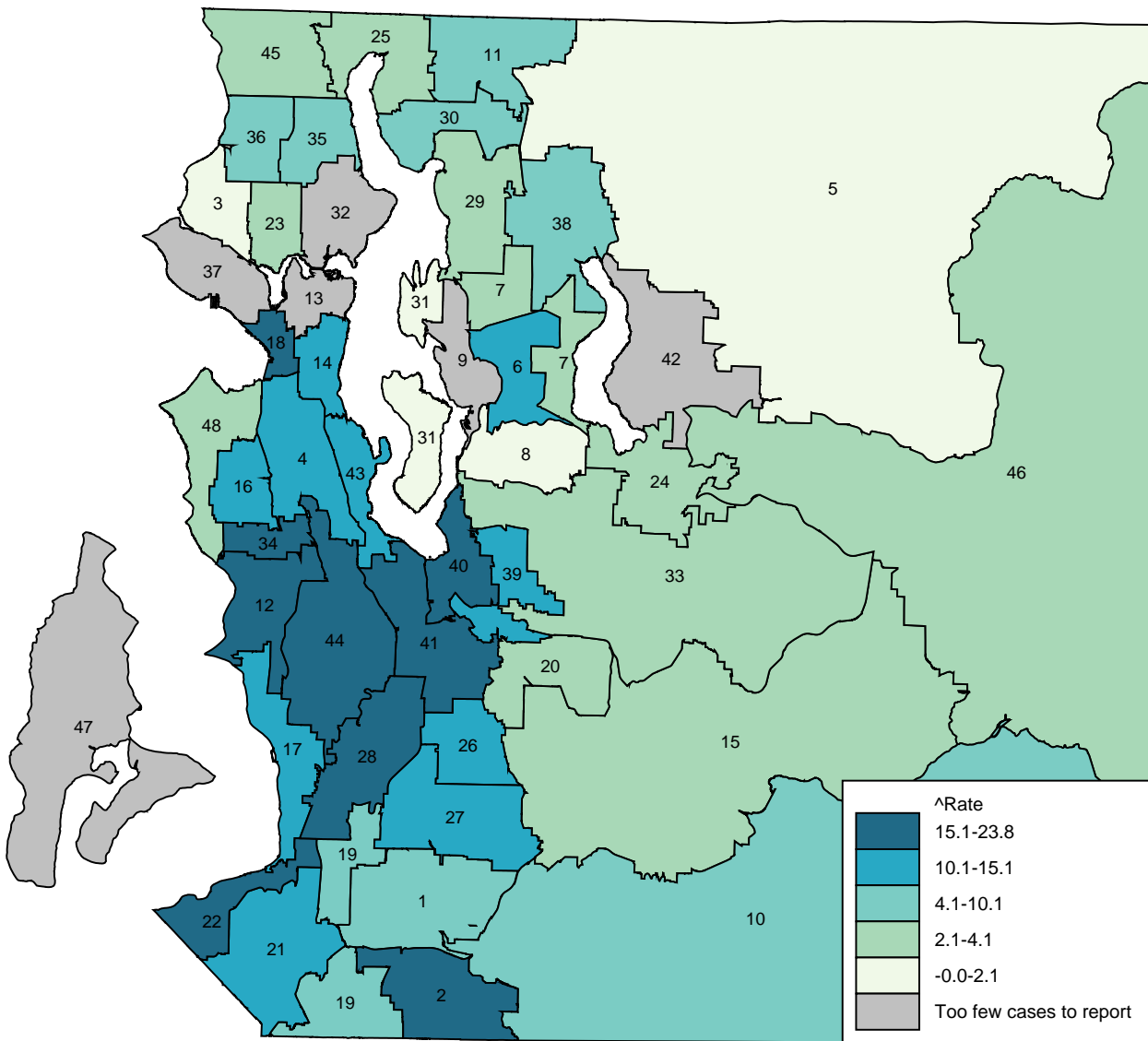
### Adolescent births, King County, 2003-2012, three-year rolling averages



Source: Birth Certificate Data, Washington State Department of Health, Center for Health Statistics

Prepared by: Public Health Seattle & King County, Assessment, Policy Development, & Evaluation, 1/2015

# Adolescent births by health reporting areas, King County, 2008-2012



Note: HRA labels on the map match the chart on the right, listed in alphabetical order.  
 Source: Birth Certificate Data, Washington State Department of Health, Center for Health Statistics.  
 Prepared by Public Health - Seattle & King County, Assessment, Policy Development & Evaluation on 11/2014.  
 ^Rate = Rate per 1,000 females ages 15-17