

King County Superior Court
Quarterly Statistical Report

Second Quarter 2011

Department of Judicial Administration
Prepared by: Shiquan Liao, Ph.D., Statistician

Release Date: July 20, 2011

Report #: QTR-2011-2

Table 1. Year-to-Date Filing Activity

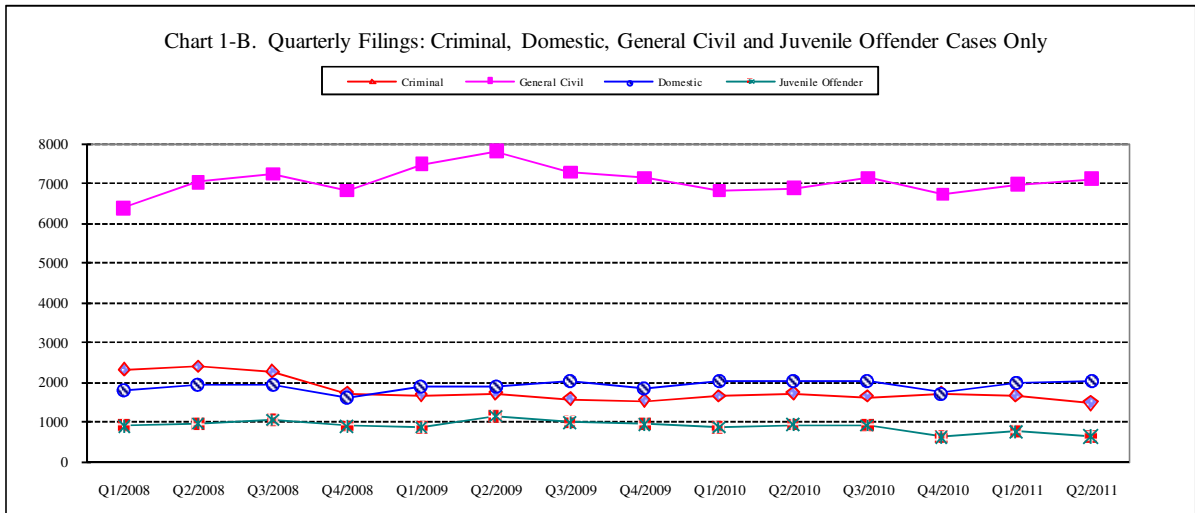
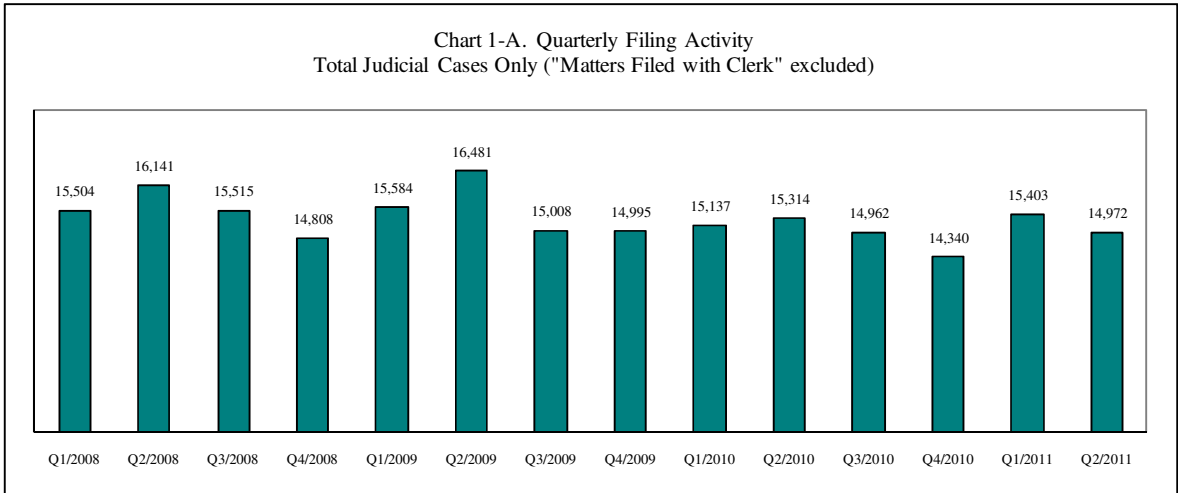
King County Superior Court

Reporting Category	Year-to-Date (Jan 1 to Jun 30) and Annual Filing Activity ⁽¹⁾					2010-2011 change (+ means "increase")		% of 2011 Total Filing ⁽²⁾
	2007	2008	2009	2010	2011	Cases	Percentage	
Total (incl. RALJ)								
Year-to-Date Filing	32559	31645	32065	30451	30375	-76	-0.2%	
Annual Filing	63057	62018	62148	59798				
Criminal (excl. RALJ)								
Year-to-Date Filing	5679	4688	3388	3354	3135	-219	-6.5%	10.3%
Annual Filing	10767	8667	6498	6691				
General Civil (excl. Asbestos)								
Year-to-Date Filing	13007	13445	15321	13716	14099	+383	+2.8%	46.4%
Annual Filing	25893	27509	29789	27603				
Asbestos Cases (civil) ⁽³⁾								
Year-to-Date Filing	64	32	15	11	24	+13	+118.2%	0.1%
Annual Filing	127	68	32	29				
Domestic								
Year-to-Date Filing	4016	3716	3781	4067	4008	-59	-1.5%	13.2%
Annual Filing	7720	7254	7673	7850				
Probate								
Year-to-Date Filing	2818	2927	2613	2608	2952	+344	+13.2%	9.7%
Annual Filing	5363	5373	5110	5203				
Guardianship								
Year-to-Date Filing	451	434	442	457	413	-44	-9.6%	1.4%
Annual Filing	885	901	841	893				
Adoption								
Year-to-Date Filing	388	384	362	350	336	-14	-4.0%	1.1%
Annual Filing	717	772	685	686				
Paternity								
Year-to-Date Filing	823	577	549	640	511	-129	-20.2%	1.7%
Annual Filing	1421	1147	1233	1189				
Mental Illness								
Year-to-Date Filing	1147	1250	1303	1499	1700	+201	+13.4%	5.6%
Annual Filing	2397	2420	2727	3059				
Juvenile Dependency								
Year-to-Date Filing	532	465	475	544	559	+15	+2.8%	1.8%
Annual Filing	971	888	903	1038				
Juvenile ARY/CHINS								
Year-to-Date Filing	222	249	176	213	179	-34	-16.0%	0.6%
Annual Filing	411	417	341	347				
Juvenile Truancy								
Year-to-Date Filing	1304	1475	1504	1069	917	-152	-14.2%	3.0%
Annual Filing	2111	2512	2083	1614				
Juvenile Offender								
Year-to-Date Filing	1950	1855	2016	1794	1404	-390	-21.7%	4.6%
Annual Filing	3954	3803	3967	3356				
Criminal RALJ								
Year-to-Date Filing	113	111	87	90	109	+19	+21.1%	0.4%
Annual Filing	225	214	180	176				
Civil RALJ								
Year-to-Date Filing	45	37	33	39	29	-10	-25.6%	0.1%
Annual Filing	95	73	86	64				
Matters Filed with Clerk ⁽⁴⁾								
Year-to-Date Filing	6717	6825	7360	7853	6871	-982	-12.5%	
Annual Filing	12784	13881	14662	15586				

(1) New filings only (based on filing date), excluding re-opened cases (unable to count), and reflecting all documents received by 07/15/2011.

(2) New filings of each reporting category as percentage of "Year-to-Date Filing".

(3) "Matters Filed with Clerk" and "Additional Filings with Clerk" are not included in the "Total".



* Note: "General Civil" is specifically defined in this report. The category of "General Civil" does **not** include the following case types: domestic, probate, guardianship, adoption, paternity, mental illness, juvenile cases (dependency, at-risk youth, child-in-need of service, civil RALJ, and tax filings that don't require judicial resources ("matters filed with clerk")). Please check the Appendix for the cause codes in the "General Civil" category.

Table 1-A. Post-Resolution Modifications (Domestic and Paternity Cases)

Based on Tracks Opened After Original Resolution Date

		2009Q1			2009Q2			2009Q3			2009Q4			Year 2009		
Location	Case Type	DMOD	DTBA	Total	DMOD	DTBA	Total	DMOD	DTBA	Total	DMOD	DTBA	Total	DMOD	DTBA	Total
KNT	Domestic	110	64	174	102	82	184	129	72	201	142	94	236	483	312	795
	Paternity	25	17	42	18	19	37	21	15	36	18	12	30	82	63	145
KNT Total		135	81	216	120	101	221	150	87	237	160	106	266	372	375	940
SEA	Domestic	118	94	212	117	115	232	121	79	200	110	99	209	466	387	853
	Paternity	13	29	42	25	49	74	21	37	58	21	17	38	80	132	212
SEA Total		131	123	254	142	164	306	142	116	258	131	116	247	546	519	1065
KNT/SEA Total		266	204	470	262	265	527	292	203	495	291	222	513	1111	894	2005
		2010Q1			2010Q2			2010Q3			2010Q4			Year 2010		
Location	Case Type	DMOD	DTBA	Total	DMOD	DTBA	Total	DMOD	DTBA	Total	DMOD	DTBA	Total	DMOD	DTBA	Total
KNT	Domestic	134	75	209	155	86	241	153	69	222	117	53	170	559	283	842
	Paternity	20	20	40	11	19	30	24	13	37	20	10	30	75	62	137
KNT Total		154	95	249	166	105	271	177	82	259	137	63	200	634	345	979
SEA	Domestic	116	79	195	142	105	247	133	71	204	116	77	193	507	332	839
	Paternity	16	13	29	16	23	39	22	19	41	17	20	37	71	75	146
SEA Total		132	92	224	158	128	286	155	90	245	133	97	230	578	407	985
KNT/SEA Total		286	187	473	324	233	557	332	172	504	270	160	430	1212	752	1964
		2011Q1			2011Q2			2011Q3			2011Q4			Year 2011		
Location	Case Type	DMOD	DTBA	Total	DMOD	DTBA	Total	DMOD	DTBA	Total	DMOD	DTBA	Total	DMOD	DTBA	Total
KNT	Domestic	151	65	216	165	76	241							316	141	457
	Paternity	22	6	28	23	10	33							45	16	61
KNT Total		173	71	244	188	86	274							361	157	518
SEA	Domestic	118	75	193	151	106	257							269	181	450
	Paternity	19	19	38	17	23	40							36	42	78
SEA Total		137	94	231	168	129	297							305	223	528
KNT/SEA Total		310	165	475	356	215	571							666	380	1046

* DMOD = parenting plan modification track; DTBA = support modification track.

Table 2. Number of Cases Resolved and Resolution Category (%)

King County Superior Court

Reporting Category	Q3/09	Q4/09	Q1/10	Q2/10	Q3/10	Q4/10	Q1/11	Q2/11*
Total Resolutions (excl. "Matters Filed with Clerk")	16395	15168	15114	16358	16552	14957	15842	16070
Criminal (excl. RALJ): # Resolved	1804	1519	1590	1649	1712	1500	1680	1599
Resolved by Jury Trial	4.7%	4.7%	4.5%	3.9%	4.1%	4.2%	4.8%	3.8%
Resolved by Non-Jury Trial	1.6%	1.5%	1.1%	2.8%	1.5%	1.2%	1.6%	1.3%
Resolved by Guilty Plea	78.9%	77.3%	77.2%	77.2%	79.4%	80.4%	76.3%	78.4%
Dismissal	14.6%	16.4%	16.8%	16.0%	14.8%	13.6%	16.8%	16.1%
Others	0.3%	0.1%	0.3%	0.2%	0.3%	0.6%	0.5%	0.4%
General Civil: # Resolved	7505	7167	7359	7680	7610	7280	7652	7866
Resolved by Jury Trial	0.4%	0.4%	0.4%	0.3%	0.5%	0.5%	0.5%	0.4%
Resolved by Non-Jury Trial	0.5%	0.5%	0.5%	0.3%	0.5%	0.4%	0.4%	0.4%
Summary Judgment	1.7%	2.0%	1.9%	2.3%	2.0%	2.3%	1.7%	1.8%
Default/ Uncontested	44.9%	40.6%	40.2%	40.2%	41.7%	39.6%	38.9%	42.2%
Arbitration	2.0%	2.2%	1.8%	1.7%	1.9%	2.1%	1.8%	2.0%
Settlement/Dismissal	46.0%	50.3%	51.4%	51.1%	50.3%	50.9%	52.5%	49.5%
Closure by Clerk	3.6%	3.1%	2.4%	3.0%	2.2%	3.5%	3.4%	2.8%
Others	0.9%	0.9%	1.4%	1.1%	0.9%	0.8%	0.9%	0.8%
Asbestos Cases (civil): # Resolved	50	120	53	26	11	10	4	21
Resolved by Jury Trial	0.0%	0.0%	1.9%	0.0%	0.0%	10.0%	0.0%	0.0%
Resolved by Non-Jury Trial	0.0%	0.0%	0.0%	0.0%	0.0%	0.0%	0.0%	0.0%
Summary Judgment	4.0%	15.0%	3.8%	3.9%	9.1%	10.0%	25.0%	0.0%
Default/ Uncontested	4.0%	0.0%	0.0%	0.0%	9.1%	30.0%	25.0%	4.8%
Arbitration	0.0%	0.0%	0.0%	0.0%	0.0%	0.0%	0.0%	0.0%
Settlement/Dismissal	92.0%	82.5%	90.1%	96.2%	81.8%	40.0%	50.0%	95.2%
Closure by Clerk	0.0%	0.0%	3.8%	0.0%	0.0%	0.0%	0.0%	0.0%
Others	0.0%	2.5%	0.0%	0.0%	0.0%	10.0%	0.0%	0.0%
Domestic: # Resolved	1770	2076	1833	2021	2030	1966	1991	2002
Resolved by Trial	5.0%	4.7%	4.5%	4.8%	4.0%	4.7%	4.4%	4.9%
Default/ Uncontested	9.1%	8.4%	8.7%	8.8%	9.8%	7.9%	8.4%	9.5%
Settlement /Dismissal	84.8%	85.8%	86.0%	85.3%	84.8%	85.0%	86.0%	84.4%
Closure by Clerk	0.6%	0.7%	0.6%	0.7%	0.8%	1.8%	0.7%	0.8%
Others	0.5%	.3%	0.2%	0.5%	0.6%	0.6%	0.5%	0.5%
Probate: # Resolved	1251	1199	1276	1348	1356	1274	1495	1497
Personal Rep. Appointed	72.8%	73.5%	74.8%	74.4%	72.6%	74.2%	72.2%	71.1%
Dismissal	2.4%	2.7%	1.9%	3.6%	2.7%	2.8%	2.1%	3.3%
Closure by Clerk	0.2%	0.0%	0.0%	0.2%	0.2%	0.6%	0.2%	0.0%
Others	24.5%	23.9%	23.3%	21.7%	24.6%	22.5%	25.5%	25.5%
Guardianship: # Resolved	193	215	225	256	241	225	207	203
Guardian Appointed	58.6%	40.0%	52.9%	51.2%	60.6%	60.4%	53.1%	55.2%
Dismissal	40.9%	59.1%	47.1%	48.8%	39.0%	38.7%	45.9%	44.3%
Closure by Clerk	0.0%	0.0%	0.0%	0.0%	0.0%	0.0%	0.0%	0.0%
Others	0.5%	0.9%	0.0%	0.0%	0.4%	0.9%	1.0%	0.5%
Adoption: # Resolved	136	208	150	196	164	186	154	173
Resolved by Trial	0.0%	0.0%	2.7%	0.0%	0.6%	0.0%	0.0%	0.0%
Uncontested	2.2%	0.5%	8.7%	2.6%	3.7%	0.5%	9.7%	2.3%
Settlement /Dismissal	97.1%	99.5%	88.7%	96.9%	95.7%	98.9%	88.3%	94.8%
Closure by Clerk	0.7%	0.0%	0.0%	0.0%	0.0%	0.0%	0.0%	1.2%
Others	0.0%	0.0%	0.0%	0.5%	0.0%	0.5%	2.0%	1.2%
Paternity: # Resolved	301	343	233	374	332	352	332	250
Resolved by Trial	1.7%	0.9%	2.2%	2.1%	0.9%	0.6%	1.2%	0.4%
Summary Judgment	30.2%	37.0%	32.2%	36.6%	42.8%	50.3%	45.2%	40.0%
Default/ Uncontested	25.9%	25.4%	19.7%	31.8%	23.8%	21.9%	21.4%	21.2%
Settlement/Dismissal	41.2%	36.2%	44.6%	29.4%	32.5%	27.3%	32.2%	38.0%
Closure by Clerk	1.0%	0.6%	1.3%	0.0%	0.0%	0.0%	0.0%	0.0%
Others	0.0%	0.0%	0.0%	0.0%	0.0%	0.0%	0.0%	0.4%

Reflecting all documents received by 07/15/2011.

Table 2 (cont.). Number of Cases Resolved and Resolution Category (%)

King County Superior Court

Reporting Category	Q3/09	Q4/09	Q1/10	Q2/10	Q3/10	Q4/10	Q1/11	Q2/11*
Mental Illness: # Resolved	705	629	719	813	801	738	829	865
Court Decision to Commit	70.8%	72.3%	73.9%	65.3%	69.5%	71.3%	65.9%	67.5%
Closed by Court	0.0%	0.0%	0.3%	0.0%	0.1%	0.0%	0.0%	0.0%
Dismissal	4.4%	11.5%	12.4%	27.1%	21.7%	21.1%	19.8%	22.1%
Others	24.8%	16.2%	13.5%	7.6%	8.6%	7.6%	14.4%	10.4%
Juvenile Dependency: # Resolved	874	236	245	284	336	217	305	227
Finding of Dependency	84.9%	43.2%	53.1%	58.8%	58.0%	58.1%	72.5%	58.6%
Dismissal	13.7%	56.8%	46.2%	40.1%	41.7%	41.9%	26.9%	40.5%
Others	1.4%	0.0%	0.8%	1.1%	0.3%	0.0%	0.7%	0.9%
Juvenile ARY/CHINS: # Resolved	91	91	108	99	88	165	92	82
Approve of Petition	12.1%	26.8%	33.3%	30.3%	36.4%	55.8%	41.3%	40.2%
Dismissal	86.8%	73.2%	66.7%	69.7%	63.6%	44.3%	58.7%	59.8%
Others	1.1%	0.0%	0.0%	0.0%	0.0%	0.0%	0.0%	0.0%
Juvenile Truancy: # Resolved	784	547	304	751	1061	147	282	514
Approve of Petition	0.0%	0.4%	16.8%	4.8%	0.0%	15.0%	26.6%	16.7%
Dismissal	87.0%	17.0%	83.2%	95.2%	99.8%	83.0%	73.4%	82.5%
Others	13.0%	82.6%	0.0%	0.0%	0.2%	2.0%	0.0%	0.8%
Juvenile Offender: # Resolved	864	739	953	789	736	815	754	747
Resolved by Trial (Fact Finding)	6.7%	5.8%	3.9%	5.7%	9.0%	6.4%	5.6%	7.1%
Resolved by Guilty Plea	36.9%	36.8%	39.8%	38.0%	43.9%	33.9%	40.2%	39.2%
Dismissal	53.0%	54.7%	53.4%	53.0%	44.6%	56.4%	49.7%	45.5%
Deferred Disposition (DDSP)	NA	NA	NA	NA	NA	NA	NA	4.7%
Others (including Deferred Prosecution)	3.4%	2.7%	2.9%	3.3%	2.6%	3.3%	4.5%	3.5%
Criminal RALJ: # Resolved	50	41	54	47	56	61	50	46
RALJ Decision	62.0%	73.2%	66.7%	70.2%	64.3%	57.4%	56.0%	73.9%
Dismissal	38.0%	26.8%	24.1%	23.4%	26.8%	39.3%	28.0%	19.6%
Others	0.0%	0.0%	9.3%	6.4%	8.9%	3.3%	16.0%	6.5%
Civil RALJ: # Resolved	17	32	12	25	18	21	15	13
RALJ Decision	58.8%	43.8%	50.0%	48.0%	55.6%	47.6%	40.0%	53.9%
Dismissal	41.2%	43.8%	33.3%	44.0%	33.3%	47.6%	60.0%	46.1%
Others	0.0%	12.5%	16.7%	8.0%	11.1%	4.8%	0.0%	0.0%

* Reflecting all documents received by 07/15/2011. Starting June 2011, deferred disposition (DDSP) for juvenile offender cases is reported as a resolution category.

Chart 2-A. Quarterly Resolutions
Total Judicial Cases Only ("Matters Filed with Clerk" excluded)

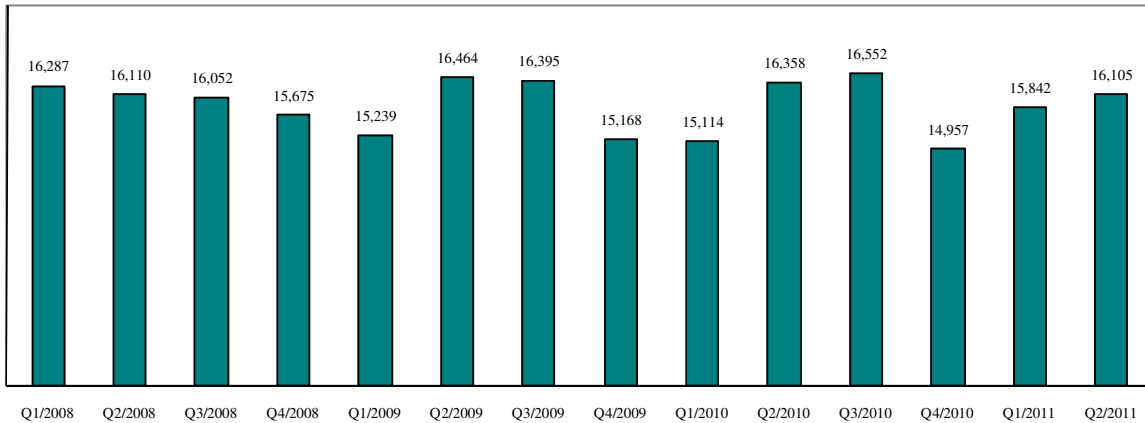
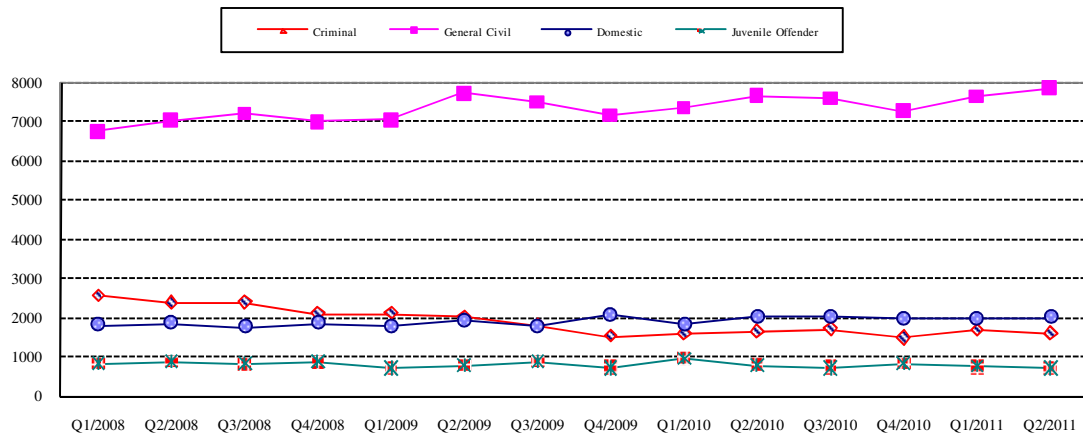


Chart 2-B. Quarterly Resolutions: Criminal, Dmestic, General Civil and Juvenile Offender Cases Only



* Note: "General Civil" is specifically defined in this report. The category of "General Civil" does **not** include the following case types: domestic, probate, guardianship, adoption, paternity, mental illness, juvenile cases (dependency, at-risk youth, child-in-need of service), civil RALJ, and tax filings that don't require judicial resources ("matters filed with clerk"). Please check the Appendix for the cause codes in the "General Civil" category.

Table 3. Age of Resolved Cases
King County Superior Court

Reporting Category	Age of Cases at Resolution							
	Q3/09	Q4/09	Q1/10	Q2/10	Q3/10	Q4/10	Q1/11	Q2/11*
Criminal (excl. RALJ)								
Age (days)								
50% Cases Resolved by Day	90	93	99	95	97	89	105	93
90% Cases Resolved by Day	323	329	394	367	345	298	357	302
98% Cases Resolved by Day	456	783	730	946	945	811	867	777
Comparison with Court Standard of								
90% in 4 months	62%	60%	59%	60%	61%	61%	57%	63%
98% in 6 months	76%	77%	75%	74%	77%	78%	73%	77%
100% in 9 months	86%	87%	85%	84%	87%	88%	85%	88%
General Civil ⁽¹⁾								
Age (days)								
50% Cases Resolved by Day	21	36	36	35	26	28	28	22
90% Cases Resolved by Day	417	507	508	525	476	518	518	494
98% Cases Resolved by Day	536	696	671	777	667	742	713	702
Comparison with Court Standard of								
90% in 12 months	89%	84%	85%	82%	87%	82%	84%	85%
98% in 18 months	96%	92%	94%	92%	95%	92%	93%	94%
100% in 24 months	99%	98%	99%	97%	99%	98%	98%	98%
Domestic								
Age (days)								
50% Cases Resolved by Day	153	165	162	158	150	169	182	166
90% Cases Resolved by Day	391	401	400	370	375	424	394	385
98% Cases Resolved by Day	452	670	607	591	581	600	579	599
Comparison with Court Standard of								
90% in 8 months	68%	68%	67%	67%	68%	65%	63%	64%
98% in 10 months	75%	76%	84%	75%	75%	74%	72%	73%
100% in 14 months	92%	93%	91%	94%	93%	90%	92%	91%
Probate								
Age (days)								
50% Cases Resolved by Day	0	0	0	0	0	0	0	0
90% Cases Resolved by Day	19	8	23	13	16	6	15	15
98% Cases Resolved by Day	155	436	565	659	630	282	283	401
Comparison with Court Standard of								
90% in 8 months	95%	98%	94%	95%	96%	97%	98%	97%
98% in 18 months	98%	99%	98%	97%	97%	99%	99%	99%
100% in 36 months	100%	99%	100%	99%	99%	100%	99%	99%
Guardianship								
Age (days)								
50% Cases Resolved by Day	57	87	78	62	62	61	64	63
90% Cases Resolved by Day	161	882	983	393	244	197	237	469
98% Cases Resolved by Day	216	4362	4356	1355	665	728	576	800
Comparison with Court Standard of								
90% in 8 months	97%	76%	75%	87%	89%	92%	90%	82%
98% in 18 months	98%	84%	86%	94%	98%	99%	98%	94%
100% in 36 months	100%	92%	92%	97%	99%	100%	100%	99%
Adoption								
Age (days)								
50% Cases Resolved by Day	53	52	51	36	58	48	67	46
90% Cases Resolved by Day	268	257	369	259	518	221	658	259
98% Cases Resolved by Day	442	564	549	647	890	556	1421	735
Comparison with Court Standard of								
90% in 8 months	87%	88%	87%	90%	82%	90%	80%	89%
98% in 10 months	92%	89%	89%	94%	85%	92%	82%	91%
100% in 14 months	94%	95%	94%	95%	87%	96%	83%	95%
Paternity								
Age (days)								
50% Cases Resolved by Day	122	133	163	170	161	169	160	121
90% Cases Resolved by Day	321	299	328	298	297	280	287	253
98% Cases Resolved by Day	385	673	521	505	444	447	435	346
Comparison with Court Standard of								
90% in 8 months	80%	83%	77%	80%	79%	80%	84%	89%
98% in 10 months	88%	90%	85%	90%	90%	93%	91%	97%
100% in 14 months	97%	96%	96%	95%	97%	96%	98%	100%

Table 3 (cont.) Age of Resolved Cases
King County Superior Court

Reporting Category	Age of Cases at Resolution							
	Q3/09	Q4/09	Q1/10	Q2/10	Q3/10	Q4/10	Q1/11	Q2/11*
Mental Illness**								
Age (days)								
50% Cases Resolved by Day	3	2	3	3	3	2	3	3
90% Cases Resolved by Day	18	11	19	29	14	9	15	11
98% Cases Resolved by Day	29	40	96	356	346	22	324	29
Juvenile Dependency								
Age (days)								
50% Cases Resolved by Day	462	231	154	122	106	82	133	99
90% Cases Resolved by Day	1568	1730	1556	1337	1029	759	495	470
98% Cases Resolved by Day	1757	3899	3469	2906	3716	2187	1704	3421
Comparison with Court Standard of								
90% in 8 months	27%	51%	60%	68%	73%	81%	62%	82%
98% in 10 months	29%	56%	63%	71%	74%	83%	69%	84%
100% in 14 months	46%	59%	68%	74%	75%	87%	83%	88%
Juvenile ARY/CHINS								
Age (days)								
50% Cases Resolved by Day	92	58	44	38	49	151	26	26
90% Cases Resolved by Day	255	235	284	262	242	342	257	226
98% Cases Resolved by Day	281	740	2059	1585	300	1317	1037	330
Comparison with Court Standard of								
90% in 8 months	82%	91%	87%	86%	88%	80%	87%	91%
98% in 10 months	97%	95%	93%	93%	98%	88%	91%	94%
100% in 14 months	100%	98%	94%	97%	100%	92%	98%	100%
Juvenile Truancy**								
Age (days)								
50% Cases Resolved by Day	23	87	17	56	20	13	13	22
90% Cases Resolved by Day	177	1271	88	1284	644	62	46	70
98% Cases Resolved by Day	258	1620	429	1640	1546	390	259	148
Juvenile Offender								
Age (days)								
50% Cases Resolved by Day	60	71	73	61	59	68	72	69
90% Cases Resolved by Day	141	202	350	190	175	295	203	220
98% Cases Resolved by Day	193	513	1179	647	408	1901	626	593
Comparison with Court Standard of								
90% in 4 months	86%	76%	72%	80%	78%	75%	71%	79%
98% in 6 months	94%	88%	83%	89%	91%	84%	87%	86%
100% in 9 months	95%	95%	88%	94%	95%	89%	93%	93%
Criminal RALJ								
Age (days)								
50% Cases Resolved by Day	350	419	348	294	272	252	224	245
90% Cases Resolved by Day	600	627	656	455	431	459	323	423
98% Cases Resolved by Day	674	1249	1041	616	590	669	758	834
Comparison with Court Standard of								
90% in 4 months	8%	12%	2%	0%	5%	3%	20%	7%
98% in 5 months	12%	14%	2%	0%	5%	3%	22%	7%
100% in 6 months	12%	19%	6%	0%	7%	5%	26%	14%
Civil RALJ								
Age (days)								
50% Cases Resolved by Day	166	126	232	171	163	165	172	163
90% Cases Resolved by Day	239	225	312	247	218	315	379	283
98% Cases Resolved by Day	260	336	379	325	245	399	504	612
Comparison with Court Standard of								
90% in 4 months	29%	50%	17%	12%	22%	14%	20%	0%
98% in 5 months	29%	53%	17%	16%	33%	19%	67%	23%
100% in 6 months	64%	75%	17%	60%	72%	62%	73%	69%

* Reflecting all documents received by 07/15/2011.

** No standard yet.

Table 4. Active Pending Caseload Statistics
King County Superior Court

Reporting Category		Q3/09	Q4/09	Q1/10	Q2/10	Q3/10	Q4/10	Q1/11	Q2/11*
Total (incl. RALJ)									
Previous Pending	(+)	22919	22026	22979	22982	22169	21682	21051	20676
New Filing	(+)	15008	14995	15137	15314	14962	14340	15403	14972
Resolved	(-)	16395	15168	15114	16358	16552	14957	15842	16070
End Pending		22026	22979	22982	22169	21682	21051	20676	20219
Resolution Rate**		1.092	1.012	0.998	1.068	1.106	1.043	1.023	1.073
Criminal (excl. RALJ)									
Previous Pending	(+)	2804	2285	2582	2595	2837	2660	2791	2730
New Filing	(+)	1579	1524	1638	1716	1630	1708	1655	1480
Resolved	(-)	1804	1519	1590	1649	1712	1500	1680	1599
End Pending		2285	2582	2595	2837	2660	2791	2730	2671
Resolution Rate**		1.142	0.997	0.971	0.961	1.050	0.878	1.015	1.080
General Civil									
Previous Pending	(+)	10236	10446	11166	10779	10117	10059	9883	9594
New Filing	(+)	7296	7144	6825	6891	7148	6734	6984	7115
Resolved	(-)	7505	7167	7359	7681	7610	7280	7652	7866
End Pending		10446	11166	10779	10117	10059	9883	9594	9279
Resolution Rate**		1.029	1.003	1.078	1.114	1.065	1.081	1.096	1.400
Asbestos Cases (civil) ⁽¹⁾									
Previous Pending	(+)	353	242	133	91	83	95	86	91
New Filing	(+)	10	5	5	6	11	3	9	15
Resolved	(-)	50	120	53	26	11	10	4	21
End Pending		242	133	91	83	95	86	91	86
Resolution Rate**		5.000	24.000	10.6	4.337	1.000	3.333	0.444	1.106
Domestic									
Previous Pending	(+)	4282	4527	4375	4624	4650	4673	4453	4479
New Filing	(+)	2033	1847	2034	2033	2045	1731	1993	2015
Resolved	(-)	1770	2076	1833	2021	2030	1966	1991	2002
End Pending		4527	4375	4624	4650	4673	4453	4479	4532
Resolution Rate**		0.871	1.124	0.901	0.994	0.993	1.136	0.999	0.994
Probate									
Previous Pending	(+)	574	601	635	657	614	616	579	555
New Filing	(+)	1257	1238	1275	1333	1327	1268	1490	1462
Resolved	(-)	1251	1199	1276	1348	1356	1274	1495	1497
End Pending		601	635	657	614	616	579	555	515
Resolution Rate**		0.995	0.968	1.001	1.011	1.022	1.005	1.003	1.024
Guardianship									
Previous Pending	(+)	321	348	304	308	277	269	248	242
New Filing	(+)	222	172	221	236	227	207	204	209
Resolved	(-)	193	215	225	256	241	225	207	203
End Pending		348	304	308	277	269	248	242	250
Resolution Rate**		0.869	1.250	1.018	1.085	1.062	1.087	1.015	0.971
Adoption									
Previous Pending	(+)	250	260	225	250	232	242	215	224
New Filing	(+)	147	174	173	177	172	164	163	173
Resolved	(-)	136	208	150	196	164	186	154	173
End Pending		260	225	250	232	242	215	224	226
Resolution Rate**		0.925	1.195	0.867	1.107	0.953	1.134	0.945	1.000
Paternity									
Previous Pending	(+)	454	535	523	622	572	560	436	369
New Filing	(+)	375	305	332	308	314	234	264	247
Resolved	(-)	301	343	233	374	332	352	332	250
End Pending		535	523	622	572	560	436	369	372
Resolution Rate**		0.803	1.125	0.702	1.214	1.057	1.504	1.258	1.012

* Reflecting all documents received by 07/15/2011.

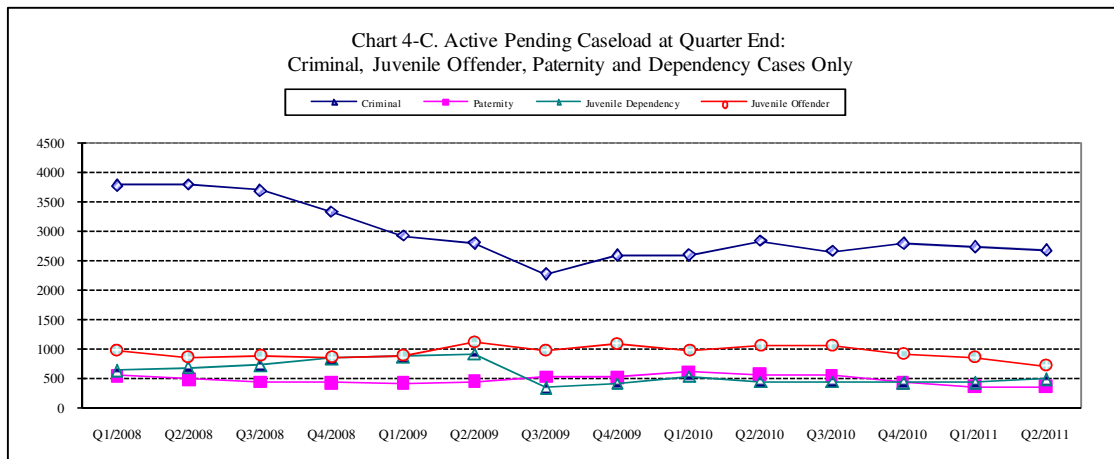
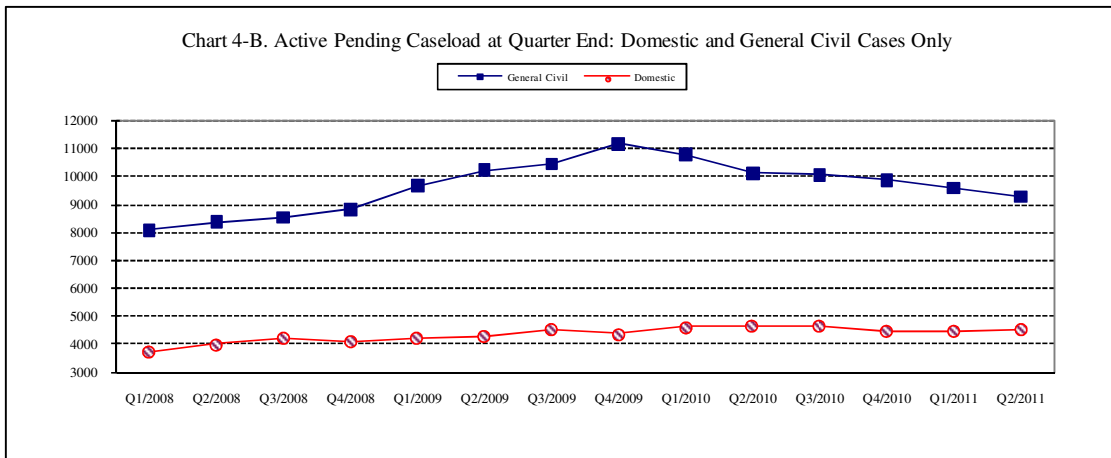
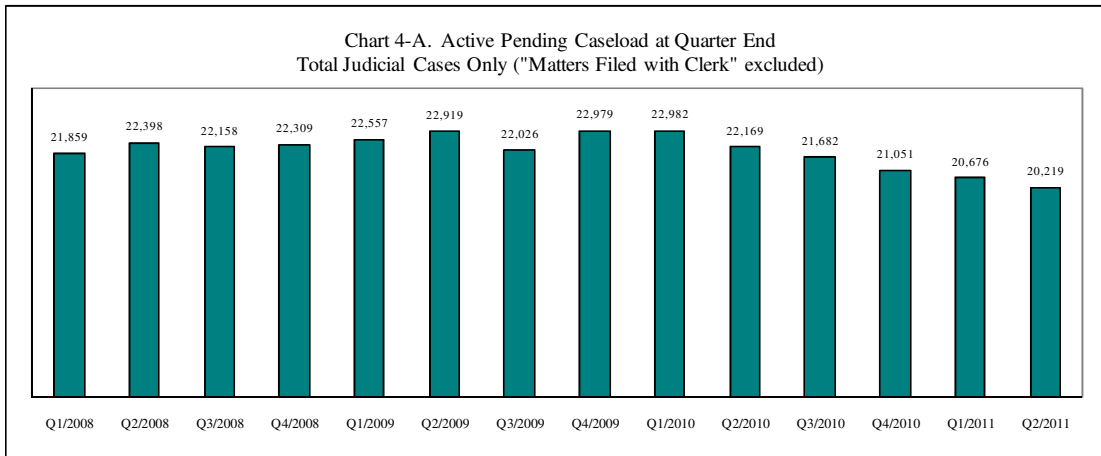
** A value of "Resolution Rate" less than one indicates the resolution pace is slower than the filing pace.

Table 4 (cont.) Active Pending Caseload Statistics
King County Superior Court

Reporting Category		Q3/09	Q4/09	Q1/10	Q2/10	Q3/10	Q4/10	Q1/11	Q2/11*
Mental Illness									
Previous Pending	(+)	366	392	465	487	436	447	463	454
New Filing	(+)	708	718	730	769	805	754	827	873
Resolved	(-)	705	629	719	813	801	738	829	865
End Pending		392	465	487	436	447	463	454	463
Resolution Rate**		0.996	0.876	0.985	1.057	0.995	0.979	1.002	0.991
Juvenile Dependency									
Previous Pending	(+)	933	348	424	542	459	453	446	442
New Filing	(+)	204	222	280	264	236	259	288	271
Resolved	(-)	874	236	245	284	336	217	305	227
End Pending		348	424	542	459	453	446	442	503
Resolution Rate**		4.284	1.063	0.875	1.076	1.424	0.838	1.059	0.838
Juvenile ARY/CHINS									
Previous Pending	(+)	150	139	153	160	156	149	68	71
New Filing	(+)	72	93	108	105	68	65	89	90
Resolved	(-)	91	97	108	99	88	165	92	82
End Pending		139	153	160	156	149	68	71	90
Resolution Rate**		1.264	1.043	1.000	0.943	1.294	2.538	1.034	0.911
Juvenile Truancy									
Previous Pending	(+)	861	729	690	692	475	219	313	398
New Filing	(+)	41	529	595	474	14	529	606	311
Resolved	(-)	784	547	304	751	1061	147	282	514
End Pending		729	690	692	475	219	313	398	329
Resolution Rate**		19.122	1.034	0.511	1.584	75.79	0.278	0.465	1.653
Juvenile Offender									
Previous Pending	(+)	1132	968	1091	967	1055	1070	913	863
New Filing	(+)	994	949	862	932	914	625	762	642
Resolved	(-)	864	739	953	789	736	815	754	747
End Pending		968	1091	967	1055	1070	913	865	726
Resolution Rate**		0.869	0.779	1.106	0.847	0.805	1.304	0.990	1.164
Criminal RALJ									
Previous Pending	(+)	168	164	171	160	161	141	126	131
New Filing	(+)	46	47	41	49	39	46	54	55
Resolved	(-)	50	41	54	47	56	61	50	46
End Pending		164	171	160	161	141	126	131	144
Resolution Rate**		1.087	0.872	1.317	0.959	1.436	1.326	0.926	0.836
Civil RALJ									
Previous Pending	(+)	35	42	42	48	45	39	31	31
New Filing	(+)	24	28	18	21	12	13	15	14
Resolved	(-)	17	32	12	25	18	21	15	13
End Pending		42	42	48	45	39	31	31	33
Resolution Rate**		0.708	1.142	0.667	1.190	1.550	1.615	1.000	0.929

* Reflecting all documents received by 07/15/2011.

** A value of "Resolution Rate" less than one indicates the resolution pace is slower than the filing pace.



* Note: "General Civil" is specifically defined in this report. The category of "General Civil" does **not** include the following case types: domestic, probate, guardianship, adoption, paternity, mental illness, juvenile cases (dependency, at-risk youth, child-in-need of service), civil RALJ, and tax filings that don't require judicial resources ("matters filed with clerk"). Please check the Appendix for the cause codes in the "General Civil" category.

Table 5. Age of Pending Cases

King County Superior Court

Reporting Category	Age of Pending Cases and # of Cases in Each Age Interval							
	Q3/09	Q4/09	Q1/10	Q2/10	Q3/10	Q4/10	Q1/11	Q2/11*
Criminal (excl. RALJ): # of Cases	2285	2582	2595	2837	2660	2791	2730	2671
Age (days)								
Median (50 percentile)	119	106	93	79	100	95	95	106
95 percentile	649	695	715	687	711	694	596	570
# of Cases in Age Interval								
0 - 60 days (0 - 2 months)	714	852	991	1208	933	962	997	876
61 - 120 days (3 - 4 months)	448	547	493	566	605	624	569	571
121 - 180 days (5 - 6 months)	292	302	280	326	366	374	383	396
181 - 270 days (7 - 9 months)	250	265	276	229	277	336	293	312
> 270 days (> 9 months)	581	616	555	508	479	459	488	516
General Civil: # of Cases	10466	11166	10779	10117	10059	9883	9594	9279
Age (days)								
Median (50 percentile)	163	177	176	163	176	177	171	164
95 percentile	569	577	598	548	571	575	567	575
# of Cases in Age Interval								
0 - 120 days (0 - 4 months)	4163	4320	4208	4123	3965	3776	3884	3724
121 - 240 days (5 - 8 months)	2408	2579	2324	2094	2143	2232	1964	1976
241 - 360 days (9 - 12 months)	1565	1771	1807	1625	1565	1545	1574	1463
361 - 540 days (13 - 18 months)	1645	1746	1682	1738	1726	1676	1582	1538
541 - 720 days (19 - 24 months)	444	504	511	371	472	489	410	404
> 720 days (> 24 months)	221	246	247	166	188	165	180	174
Asbestos Cases (civil)⁽¹⁾ : # of Cases	242	133	91	83	85	86	91	86
Age (days)								
Median (50 percentile)	1269	976	826	566	519	618	701	542
95 percentile	1980	2072	2162	2239	2326	2418	2513	2599
# of Cases in Age Interval								
0 - 120 days (0 - 4 months)	11	7	7	10	15	16	10	23
121 - 240 days (5 - 8 months)	7	9	11	9	8	9	6	1
241 - 360 days (9 - 12 months)	4	8	8	13	7	7	6	7
361 - 540 days (13 - 18 months)	23	12	6	9	15	14	12	12
541 - 720 days (19 - 24 months)	17	11	11	9	7	8	14	10
> 720 days (> 24 months)	180	86	48	33	33	32	43	33
Domestic: # of Cases	4527	4375	4624	4650	4673	4453	4479	4532
Age (days)								
Median (50 percentile)	111	119	115	114	119	128	115	107
95 percentile	429	457	442	457	477	484	473	490
# of Cases in Age Interval								
0 - 120 days (0 - 4 months)	2417	2216	2368	2444	2354	2127	2312	2443
121 - 240 days (5 - 8 months)	1177	1185	1231	1149	1291	1245	1114	1056
241 - 360 days (9 - 12 months)	544	609	644	652	570	688	629	603
361 - 540 days (13 - 18 months)	283	228	220	246	283	214	241	243
> 540 days (> 18 months)	106	137	161	159	175	179	183	187
Probate: # of Cases	601	635	657	614	616	579	555	515
Age (days)								
Median (50 percentile)	304	326	350	368	386	428	508	602
95 percentile	1539	1551	1597	1655	1696	1836	1926	2040
# of Cases in Age Interval								
0 - 120 days (0 - 4 months)	155	147	156	114	108	95	109	99
121 - 240 days (5 - 8 months)	94	103	102	111	97	65	33	28
241 - 360 days (9 - 12 months)	91	89	80	79	90	80	47	31
361 - 540 days (13 - 18 months)	86	103	109	80	93	105	113	70
> 540 days (> 18 months)	175	193	210	230	228	234	253	287

Reflecting all documents received by 07/15/2011.

Table 5 (cont.). Age of Pending Cases

King County Superior Court

Reporting Category	Age of Pending Cases and # of Cases in Each Age Interval							
	Q3/09	Q4/09	Q1/10	Q2/10	Q3/10	Q4/10	Q1/11	Q2/11*
Guardianship: # of Cases	348	304	308	277	269	248	242	250
Age (days)								
Median (50 percentile)	126	135	76	63	63	71	71	67
95 percentile	2621	1918	1157	609	632	613	679	617
# of Cases in Age Interval								
0 - 120 days (0 - 4 months)	165	140	172	173	164	159	153	165
121 - 240 days (5 - 8 months)	58	54	51	35	41	21	33	39
241 - 360 days (9 - 12 months)	27	37	28	30	22	23	12	22
361 - 540 days (13 - 18 months)	21	23	29	22	23	26	24	8
> 540 days (> 18 months)	77	50	28	17	19	19	20	16
Adoption: # of Cases	260	225	250	232	242	215	224	226
Age (days)								
Median (50 percentile)	133	177	119	163	129	162	123	119
95 percentile	2345	2543	2568	2724	2751	2963	2998	2900
# of Cases in Age Interval								
0 - 120 days (0 - 4 months)	121	93	126	100	116	88	108	113
121 - 240 days (5 - 8 months)	41	41	31	42	37	39	39	31
241 - 360 days (9 - 12 months)	28	22	24	16	26	17	19	24
361 - 540 days (13 - 18 months)	25	21	16	26	22	22	23	16
> 540 days (> 18 months)	45	48	53	48	41	49	35	42
Paternity: # of Cases	535	523	622	572	560	436	369	372
Age (days)								
Median (50 percentile)	80	98	103	99	102	107	85	90
95 percentile	300	310	302	328	345	288	277	312
# of Cases in Age Interval								
0 - 120 days (0 - 4 months)	355	316	355	338	317	239	240	246
121 - 240 days (5 - 8 months)	135	149	206	159	193	152	102	88
241 - 360 days (9 - 12 months)	32	42	48	57	30	32	22	28
361 - 540 days (13 - 18 months)	9	16	12	18	19	12	3	7
> 540 days (> 18 months)	4	0	1	0	1	1	2	3
Mental Illness: # of Cases	392	465	487	436	447	463	454	463
Age (days)								
Median (50 percentile)	351	325	380	535	590	665	757	836
95 percentile	1514	1592	1668	1785	1869	1957	2051	2138
# of Cases in Age Interval								
0 - 120 days (0 - 4 months)	96	120	106	74	82	63	76	62
121 - 240 days (5 - 8 months)	68	75	61	59	47	42	19	27
> 240 days (> 8 months)	228	270	320	303	318	358	359	374
Juvenile Dependency: # of Cases	348	424	542	459	453	446	442	503
Age (days)								
Median (50 percentile)	79	94	98	91	122	94	71	100
95 percentile	458	304	370	275	367	459	529	560
# of Cases in Age Interval								
0 - 60 days (0 - 2 months)	143	152	181	166	148	142	204	182
61 - 120 days (3 - 4 months)	68	109	129	121	78	112	96	22
121 - 180 days (5 - 6 months)	77	62	68	83	47	39	36	90
181 - 270 days (7 - 9 months)	33	65	82	57	100	38	41	45
> 270 days (> 9 months)	27	36	82	32	80	115	65	77
Juvenile ARY/CHINS: # of Cases	139	153	160	156	149	68	71	90
Age (days)								
Median (50 percentile)	168	170	176	127	214	454	401	136
95 percentile	1441	1459	1528	1582	1674	1782	1872	1947
# of Cases in Age Interval								
0 - 60 days (0 - 2 months)	33	40	58	40	30	18	26	29
61 - 120 days (3 - 4 months)	22	24	11	31	15	4	6	14
121 - 180 days (5 - 6 months)	18	16	13	26	19	0	2	6
181 - 270 days (7 - 9 months)	13	17	22	10	33	2	0	5
> 270 days (> 9 months)	53	56	56	49	52	44	37	36

* Reflecting all documents received by 07/15/2011.

Table 5 (cont.). Age of Pending Cases

King County Superior Court

Reporting Category	Age of Pending Cases and # of Cases in Each Age Interval							
	Q3/09	Q4/09	Q1/10	Q2/10	Q3/10	Q4/10	Q1/11	Q2/11*
Juvenile Truancy: # of Cases	729	690	692	475	219	313	398	329
Age (days)								
Median (50 percentile)	951	513	547	398	1977	561	110	561
95 percentile	1959	2062	2152	2290	2537	2587	2662	2768
# of Cases in Age Interval								
0 - 60 days (0 - 2 months)	3	192	168	58	13	115	180	79
61 - 120 days (3 - 4 months)	32	10	39	79	2	5	24	38
121 - 180 days (5 - 6 months)	26	0	9	41	11	1	7	17
181 - 270 days (7 - 9 months)	33	48	2	20	14	9	0	11
> 270 days (> 9 months)	635	440	474	277	179	183	187	184
Juvenile Offender: # of Cases	968	1091	967	1055	1070	913	865	726
Age (days)								
Median (50 percentile)	73	59	51	55	68	88	63	73
95 percentile	842	358	379	442	535	628	613	629
# of Cases in Age Interval								
0 - 60 days (0 - 2 months)	414	556	517	555	500	343	429	315
61 - 120 days (3 - 4 months)	224	254	182	234	221	214	145	151
121 - 180 days (5 - 6 months)	107	106	84	70	117	111	55	70
181 - 270 days (7 - 9 months)	53	94	66	64	74	95	71	46
> 270 days (> 9 months)	170	82	118	132	158	150	165	144
Criminal RALJ: # of Cases	164	171	160	161	141	126	131	144
Age (days)								
Median (50 percentile)	148	183	172	153	151	128	140	139
95 percentile	577	525	429	479	508	373	351	311
# of Cases in Age Interval								
0 - 60 days (0 - 2 months)	32	31	30	34	23	29	34	38
61 - 120 days (3 - 4 months)	35	31	29	29	13	27	26	28
121 - 180 days (5 - 6 months)	25	23	27	26	24	27	25	32
181 - 270 days (7 - 9 months)	22	43	35	34	22	31	30	25
> 270 days (> 9 months)	50	25	39	38	18	12	16	21
Civil RALJ: # of Cases	42	42	48	45	39	31	31	33
Age (days)								
Median (50 percentile)	85	72	124	102	140	157	107	94
95 percentile	300	298	265	356	1107	1199	1289	1380
# of Cases in Age Interval								
0 - 60 days (0 - 2 months)	12	14	15	15	5	10	12	7
61 - 120 days (3 - 4 months)	17	14	8	14	11	2	8	12
121 - 180 days (5 - 6 months)	7	6	18	7	12	9	3	6
181 - 270 days (7 - 9 months)	3	4	5	5	4	3	1	2
> 270 days (> 9 months)	3	4	2	4	7	7	7	6

* Reflecting all documents received by 07/15/2011.

Table 6. Seattle vs. Regional Justice Center (KNT): Filing, Resolution, Pending Caseload (%)

King County Superior Court

	Q2/10		Q3/10		Q4/10		Q1/11		Q2/11	
	SEA	KNT	SEA	KNT	SEA	KNT	SEA	KNT	SEA	KNT
Filings Total <i>(excl. filings with clerk)</i>	66%	34%	65%	35%	64%	36%	64%	36%	64%	36%
Criminal (excl. RALJ)	62%	38%	60%	40%	61%	39%	56%	44%	55%	45%
General Civil (excl. RALJ)	59%	41%	58%	42%	57%	43%	58%	42%	57%	43%
Domestic	63%	37%	62%	38%	64%	36%	60%	40%	63%	37%
Probate	79%	21%	75%	25%	76%	24%	79%	21%	77%	23%
Guardianship	61%	39%	64%	36%	53%	47%	68%	32%	63%	37%
Adoption	75%	25%	79%	21%	76%	24%	74%	26%	75%	25%
Paternity	46%	54%	45%	55%	49%	51%	50%	50%	42%	58%
Mental Illness	100%	---	100%	---	100%	---	100%	---	100%	---
Juvenile Dependency	61%	39%	58%	42%	63%	37%	54%	46%	44%	56%
Juvenile ARY/CHINS	55%	45%	57%	43%	57%	43%	64%	36%	54%	46%
Juvenile Truancy	44%	56%	64%	36%	45%	55%	46%	54%	49%	51%
Juvenile Offender	100%	---	100%	---	100%	---	100%	---	100%	---
Criminal RALJ	92%	8%	97%	3%	91%	9%	93%	7%	95%	5%
Civil RALJ	95%	5%	100%	---	100%	---	87%	13%	79%	21%
Resolution Total <i>(excl. filings with clerk)</i>	66%	34%	63%	37%	65%	35%	65%	35%	64%	36%
Criminal (excl. RALJ)	62%	38%	63%	37%	62%	38%	63%	37%	61%	39%
General Civil (excl. RALJ)	59%	41%	58%	42%	59%	41%	57%	43%	57%	43%
Domestic	62%	38%	63%	37%	62%	38%	64%	36%	62%	38%
Probate	79%	21%	75%	25%	77%	23%	79%	21%	78%	22%
Guardianship	60%	40%	66%	34%	56%	44%	56%	44%	69%	31%
Adoption	79%	21%	74%	26%	76%	24%	75%	25%	70%	30%
Paternity	51%	49%	40%	60%	41%	59%	55%	45%	48%	52%
Mental Illness	100%	---	100%	---	100%	---	100%	---	100%	---
Juvenile Dependency	65%	35%	63%	37%	63%	37%	66%	34%	37%	63%
Juvenile ARY/CHINS	55%	45%	42%	58%	67%	33%	57%	43%	52%	48%
Juvenile Truancy	59%	41%	37%	63%	28%	72%	47%	53%	37%	63%
Juvenile Offender	100%	---	100%	---	100%	---	100%	---	100%	---
Criminal RALJ	94%	6%	96%	4%	95%	5%	80%	20%	98%	2%
Civil RALJ	96%	4%	89%	11%	95%	5%	100%	---	100%	---
Pending Total <i>(excl. filings with clerk)</i>	69%	31%	69%	31%	69%	30%	68%	32%	67%	33%
Criminal (excl. RALJ)	58%	42%	56%	44%	58%	42%	53%	47%	52%	48%
General Civil (excl. RALJ)	72%	28%	71%	29%	70%	30%	70%	30%	70%	30%
Domestic	61%	39%	61%	39%	61%	39%	60%	40%	60%	40%
Probate	88%	12%	86%	14%	87%	13%	88%	12%	85%	15%
Guardianship	60%	40%	59%	41%	56%	44%	66%	34%	61%	39%
Adoption	72%	28%	75%	25%	73%	27%	71%	29%	74%	26%
Paternity	46%	54%	48%	52%	55%	45%	52%	48%	47%	53%
Mental Illness	100%	---	100%	---	100%	---	100%	---	100%	---
Juvenile Dependency	74%	26%	72%	28%	75%	25%	65%	35%	60%	40%
Juvenile ARY/CHINS	70%	30%	79%	21%	87%	13%	85%	15%	76%	24%
Juvenile Truancy	46%	54%	74%	26%	68%	32%	66%	34%	76%	24%
Juvenile Offender	100%	---	100%	---	100%	---	100%	---	100%	---
Criminal RALJ	94%	6%	94%	6%	93%	7%	93%	7%	92%	8%
Civil RALJ	96%	4%	97%	3%	100%	---	94%	6%	85%	15%

Reflecting all documents received by 07/15/2011.

Table 7. Quarterly Utilization of Pro Tem Judges/Commissioners ⁽¹⁾

Category	Q4/08	Q1/09	Q2/09	Q3/09	Q4/09	Q1/10	Q2/10	Q3/10	Q4/10	Q1/11	Q2/11
Grand Total	1130	922	1324	1246	1407	884	1466	1029	1337	932	1354
<i>Paid hours</i>	1130	922	1324	1246	1407	884	1466	1029	1337	932	1354
<i>Donated hours</i>	---	---	---	---	---	---	---	---	---	---	---
Judge FTE Equivalent ⁽³⁾	2.5	2.0	2.9	2.8	3.1	2.0	3.3	2.3	3.0	2.1	3.0
By Work Type											
On Trial/Hearings	925	834	1154	1077	1133	757	1282	859	1103	773	1110
On Preparation	205	88	170	169	274	127	184	168	235	159	200
Other or Unspecified Activity	0	0	0	0	0	0	0	2	0	0	43
By Case Type											
Criminal	38	7	28	1	43	6	20	0	62	43	23
Civil	660	316	693	807	767	397	570	541	692	590	654
Domestic	330	156	215	264	238	97	331	162	297	129	414
Probate	0	0	0	0	0	0	0	0	0	0	0
Guardianship	0	0	0	0	0	0	0	0	0	0	0
Adoption	0	0	0	0	0	0	0	0	0	0	0
Paternity	0	0	0	0	0	0	0	0	0	0	0
Mental Illness	0	0	0	0	0	0	0	0	0	0	0
Juvenile Dependency	0	121	135	48	90	78	59	69	47	34	34
Juvenile Truancy	14	119	40	20	24	108	87	43	30	54	84
Juvenile Offender	89	204	213	107	246	199	204	214	211	83	139
Other or Unspecified	0	0	0	0	0	0	195	0	0	0	7
By Calendar Type											
Criminal Plea	0	0	0	0	0	0	0	0	0	35	19
Criminal Trial	0	0	0	1	0	0	0	0	0	52	0
Civil Trial	0	3	103	190	113	28	29	30	66	0	22
Individual Calendar	0	0	0	0	0	0	0	0	0	0	0
Family Law	438	201	323	310	543	173	392	290	429	279	426
Ex Parte	189	131	275	323	163	186	292	273	316	234	343
Mental Illness	61	56	90	131	64	51	55	51	81	66	145
Juvenile Dependency	166	178	222	89	117	104	158	118	109	89	147
Juvenile CHINS/ARY	0	0	0	0	0	0	0	0	0	0	0
Juvenile Truancy	14	119	40	20	24	108	87	43	30	54	80
Juvenile Offender	89	204	213	107	246	199	204	214	211	83	139
Other or Unspecified	172	33	59	76	139	37	249	9	96	41	33
By Reason											
Congestion	264	203	174	287	283	67	612	222	303	227	164
Medical Coverage	243	287	102	195	240	180	134	132	215	255	91
Vacation	507	245	556	649	599	425	529	547	623	319	672
Training	116	185	425	95	213	135	424	129	196	131	155
Judicial Conference	0	0	0	0	0	0	12	0	0	0	272
Others	0	0	68	20	73	78	0	0	0	0	0

(1) This table is based on the time sheet for compensation

(2) Judge FTE Equivalent = # of hours / [7.5 hours/day * 20 days/month * 3 months] = # of hours/450.

The statistics on Pro Tem judge/commissioner use provide information on the external help the court has obtained in order to handle the workload. The data are collected on the time sheet for compensation (therefore it does not include unpaid volunteering or visiting judges/commissioners). The database on Pro Tem judges/commissioners is managed by the Administrative Services Department (ASD) of King County Superior Court. The Pro Tem total hours presented in this section are provided quarterly by ASD.

Table 9. Ex Parte Activity

SEATTLE	2ND QTR, 2010		3RD QTR, 2010		4TH QTR, 2010		1ST QTR, 2011		2ND QTR, 2011	
	HRGS	ORDS	HRGS	ORDS	HRGS	ORDS	HRGS	ORDS	HRGS	ORDS
ADOP/PAT	152	450	144	377	154	413	91	301	120	337
DOM. VIOL.	3	393	11	353	3	377	7	335	9	341
OTH. CIVIL	310	848	400	836	356	755	419	843	361	795
DOMESTIC	809	2576	989	2558	914	2416	891	2392	832	2470
PROB/GDN	1313	2688	1401	2533	1284	2564	1407	2635	1293	2582
SUBTOTAL	2587	6955	2945	6657	2711	6525	2815	6506	2615	6525
DAILY AVG.	42	114	48	109	44	107	46	107	43	107

SEATTLE VIA CLERK (starting Jan 2009)	2ND QTR, 2010		3RD QTR, 2010		4TH QTR, 2010		1ST QTR, 2011		2ND QTR, 2011	
	----	ORDS	----	ORDS	----	ORDS	----	ORDS	----	ORDS
ADOP/PAT	----	155	----	171	----	154	----	137	----	ORDS
DOM. VIOL.	----	5	----	6	----	5	----	5	----	174
OTH. CIVIL	----	5958	----	6248	----	5699	----	5990	----	2
DOMESTIC	----	992	----	973	----	1081	----	884	----	8377
PROB/GDN	----	696	----	638	----	610	----	684	----	1172
SUBTOTAL	----	7806	----	8036	----	7549	----	7700	----	666
DAILY AVG.	----	128	----	132	----	124	----	126	----	10391

SEATTLE MAIL-IN	2ND QTR, 2010		3RD QTR, 2010		4TH QTR, 2010		1ST QTR, 2011		2ND QTR, 2011	
	----	ORDS	----	ORDS	----	ORDS	----	ORDS	----	ORDS
ADOP/PAT	----	4	----	3	----	4	----	3	----	2
DOM. VIOL.	----	1	----	0	----	0	----	0	----	0
OTH. CIVIL	----	264	----	259	----	217	----	243	----	218
DOMESTIC	----	34	----	55	----	46	----	50	----	42
PROB/GDN	----	119	----	95	----	95	----	94	----	116
SUBTOTAL	----	422	----	412	----	362	----	390	----	378
DAILY AVG.	----	7	----	7	----	6	----	6	----	6

Note: Ex Parte via Clerk started in January 2009.

Table 9 (cont). Ex Parte Activity

KENT	2ND QTR, 2010		3RD QTR, 2010		4TH QTR, 2010		1ST QTR, 2011		2ND QTR, 2011	
	HRGS	ORDS	HRGS	ORDS	HRGS	ORDS	HRGS	ORDS	HRGS	ORDS
ADOP/PAT	42	145	36	145	50	174	40	136	46	141
DOM. VIOL.	0	469	1	462	1	403	2	437	1	378
OTH. CIVIL	280	878	297	1055	297	932	328	901	314	1091
DOMESTIC	441	1545	413	1482	398	1327	441	1478	482	1683
PROB/GDN	437	841	490	949	438	867	418	951	425	873
SUBTOTAL	1200	3878	1237	4093	1184	3703	1229	3903	1268	4166
DAILY AVG.	20	64	20	67	19	61	20	64	21	68

KENT VIA CLERK (starting Jan 2009)	2ND QTR, 2010		3RD QTR, 2010		4TH QTR, 2010		1ST QTR, 2011		2ND QTR, 2011	
	----	ORDS	----	ORDS	----	ORDS	----	ORDS	----	ORDS
ADOP/PAT	----	48	----	61	----	70	----	74	----	39
DOM. VIOL.	----	1	----	5	----	2	----	1	----	0
OTH. CIVIL	----	3256	----	3867	----	3204	----	3566	----	1654
DOMESTIC	----	424	----	466	----	472	----	446	----	350
PROB/GDN	----	213	----	231	----	245	----	269	----	252
SUBTOTAL	----	3942	----	4630	----	3993	----	4356	----	2295
DAILY AVG.	----	65	----	76	----	65	----	71	----	38

KENT MAIL-IN	2ND QTR, 2010		3RD QTR, 2010		4TH QTR, 2010		1ST QTR, 2011		2ND QTR, 2011	
	----	ORDS	----	ORDS	----	ORDS	----	ORDS	----	ORDS
ADOP/PAT	----	4	----	2	----	2	----	2	----	1
DOM. VIOL.	----	0	----	0	----	0	----	0	----	0
OTH. CIVIL	----	79	----	69	----	57	----	62	----	60
DOMESTIC	----	6	----	20	----	22	----	23	----	28
PROB/GDN	----	33	----	34	----	31	----	48	----	26
SUBTOTAL	----	122	----	125	----	112	----	135	----	115
DAILY AVG.	----	2	----	2	----	2	----	2	----	2

ALL SEATTLE KENT and EASTSIDE	2ND QTR, 2010		3RD QTR, 2010		4TH QTR, 2010		1ST QTR, 2011		2ND QTR, 2011	
	HRGS	ORDS	HRGS	ORDS	HRGS	ORDS	HRGS	ORDS	HRGS	ORDS
GRAND TOTAL	3787	23126	4182	23954	3895	22245	4044	22991	3883	23871
DAILY AVERAGE	62.1	379.1	68.6	392.7	63.9	364.7	66.3	376.9	63.7	391.3

Note: Ex Parte via Clerk started in January 2009.

Appendix Glossary and Definition

General Definition

Active Status

A case is active if it is not on suspense status (see Suspense Status).

Case

A case is defined as a filing with an assigned case number (or a case number plus a defendant connection code in pre-1990 criminal filings).

Completion

A case is completed when dispositive document is filed with the court following resolution.

Jury Trial

A hearing is reported as a jury trial if the jury is impaneled.

New Case

A new case is an original filing with new case number assigned.

Non-Jury Trial

A hearing is reported as a non-jury trial if an opening statement is made, waived, or reserved. A juvenile fact finding hearings is reported as a non-jury trial.

Pending Case

A case is defined as pending if it is unresolved and active (not in suspense).

Reactivated Case

A case returns to active status from suspense status during the reporting period.

Re-opened Cases

A case is re-opened if it has been previously completed but returns to the court for supplement or change of the original case resolution. A re-opened case does not have a new case number. Only resolved cases can be "re-opened". (Note: measurement not available as of July 1996. SCOMIS capacity may exist after conversion to DB2 in the future).

Resolution

A case is resolved if all issues in the complaint are fully adjudicated.

Suspended Case

A case is placed in suspense status from active status during the reporting period.

Suspense Status

A case is on suspense status if it is on warrant, appeal, stay, mediation, arbitration ("Deferred Prosecution" is not a suspense status, but is treated as a resolution).

Trial

A hearing set before a judge or jury in which all the issues in the case are meant to be resolved. A trial normally includes opening statements to the court or jury stating what the evidence will show, introduction of witnesses and exhibits for direct and cross examination, final arguments to the court or jury in which counsel argue both the evidence and the law, and judgment by the court or jury stating what the facts of the case are and what law applies to the facts. In a jury case, it also includes the selection of the jury. A trial can be held

for one or more cases. A single trial may be held to adjudicate more than one case (as defined above).

Post-resolution Modifications

In this report, we also report the post-resolution modifications for case type 3 (domestic) and 5 (paternity). These numbers are based on the tracks (DMOD and DTBA) opened after the original resolution date (i.e., if the track beginning date is after the resolution date).

Section I. Filing Activity

Additional Filings with Clerk

Filings with clerk without assigning a SCOMIS case number. This reporting category consists of search warrants, wire taps, extradition, oaths and orders pertaining to Pro Tem judge/commissioners/Court

Reporters/Bailiffs, and other "non-case" filings as recorded under 12050 system.

Annual Filings

Total number of new case filings during the calendar year (January 1 to December 31).

Adoption Cases

This reporting category includes the following "cause-of-action" codes within SCOMIS case type 5:

- Relinquishment (REL)
- Termination of Parent/Child Relationship (TER)
- Adoption (ADP)
- Miscellaneous (MSC)
- Name Change - Confidential (CHN)
- Initial Pre-Placement Report Filed with Clerk (PPR)

General Civil Cases

"General Civil" cases include all civil matters other than Domestic, Probate, Guardianship, Adoption, and appeals from courts of limited jurisdiction and "Matters Filed with Clerk". "General civil" cases include small claims as identified by the "Small Claim Track". This reporting category includes the following "cause-of-action" codes within SCOMIS case type 2:

- Administrative Law Review (ALR)
- Change of Name - Non-Confidential (CHN)
- Collection (COL)
- Commercial (COM)
- Condemnation (CON)
- Domestic Violence Protection (DVP)
- Emancipation of Minor (EOM)
- Foreclosure (FOR)
- Civil Harassment (HAR)
- Injunction (INJ)
- Other Malpractice (MAL)
- Medical Malpractice (MED)
- Meretricious Relationship (MER)
- Malicious Harassment (MHA)
- Miscellaneous (MSC)
- Minor Settlement (MST) - as of 10/1/96, under Guardianship
- Petition of Civil Commitment- Sexual Predator (PCC)
- Property Fairness (PFA)

- Personal Injury (PIN)
- Property Damage (PRP)
- Quiet Title (QT)
- Small Claims (LCA/LCI on “Small Claim Track”)
- Seizure of Property from the Commission of a Crime (SPC)
- Seizure of Property Resulting from a Crime (SPR)
- Tort Motor Vehicle (TMV)
- Tort Other (TTO)
- Unlawful Detainer (UND)
- Wrongful Death (WDE)
- Writ of Habeas Corpus (WHC)
- Miscellaneous Writ (WMW)
- Writ of Mandamus (WRM)
- Writ of Restitution (WRR)
- Writ of Review (WRV)

Civil RALJ Cases

Civil appeals from courts of limited jurisdiction (excluding small claims as identified by the “Small Claim Track”). Civil RALJ includes the following “cause-of-action” reporting categories:

- Lower Court Appeal - Civil and “Not a Small Claim”
- Lower Court Appeal - Infraction and “Not a Small Claim”

Note: The Civil RALJ cases are determined based on both SCOMIS “cause-of-action” code (LCA and LCI) within SCOMIS case type 2 and the “Small Claim Track”.

Criminal Cases (excl. RALJ)

Adult criminal cases, excluding appeals from courts of limited jurisdiction. This reporting category includes the following crime categories within SCOMIS case type 1:

- Homicide
- Sex Crime
- Robbery
- Assault
- Theft/Burglary
- Motor Vehicle Theft
- Controlled Substance
- Other Felony
- Others (Misdemeanor, Non-charge Case)

Criminal RALJ Cases

Criminal appeals from courts of limited jurisdiction. This reporting category includes all SCOMIS case type 1 cases that have an appeal from lower court field of “Yes”.

Domestic Cases

This reporting category includes the following “cause-of-action” codes within SCOMIS case type 3:

- Annulment – Invalidity (INV)
- Child Custody (CUS)
- Dissolution With Children Of The Marriage (DIC)
- Dissolution With No Children Of The Marriage (DIN)
- Dissolution of Domestic Partnership – With Children (DPC)
- Dissolution of Domestic Partnership – With No Children (DPN)
- Foreign Judgment (FJU)
- Invalidity – Domestic Partnership (INP)
- Mandatory Wage Assignment (MWA)
- Miscellaneous (MSC)
- Modification (MOD)
- Modification – Support Only (MDS)
- Out-Of-State Child Custody (OSC)
- Parenting Plan / Child Support (PPS)
- Reciprocal, Respondent In-County (RIC)
- Reciprocal, Respondent Out-of-County (ROC)
- Legal Separation (SEP)
- Legal Separation – Domestic Partnership (SPD)

Guardianship Cases

This reporting category includes the following “cause-of-action” codes within SCOMIS case type 4:

- Guardianship/Estate (G/E)
- Guardianship (GND)

- Limited Guardianship (LGD)
- Minor Settlement (MST)

Juvenile ARY/CHINS Cases

Juvenile dependency cases, excluding truancy cases and DEP cause code. This reporting category includes following “cause-of-action” codes within SCOMIS case type 7:

- Alternative Residential Placement (ARP)
- At-Risk Youth (ARY)
- Child in Need of Service (CNS)
- Termination (TER)

Juvenile Dependency Cases

This reporting category includes following “cause-of-action” codes within SCOMIS case type 7:

- Dependency (DEP)

Juvenile Offender Cases

This reporting category includes the following crime categories in SCOMIS case type 8:

- Homicide
- Sex Crime
- Robbery
- Assault
- Theft/Burglary
- Motor Vehicle Theft
- Controlled Substance
- Other Felony
- Others (Misdemeanor, Non-charge Case)

Juvenile Truancy Cases

Mandatory truancy filings started on 10/01/1995. This reporting category includes the following “cause-of-action” code within SCOMIS case type 7:

- Truancy (TRU)

Matters Filed with Clerk

Filings with clerk (case numbers assigned), but requiring little or no judicial action. This reporting category includes the following “cause-of-action” codes within SCOMIS case type 2:

- Abstract of Judgment (ABJ)
- Foreign Judgment (FJU)
- Tax Warrant (TAX)
- Transcripts of Judgment (TRJ)

Mental Illness Cases

This reporting category includes all “cause-of-action” codes within SCOMIS case type 6:

- Alcoholic Treatment (ALT)
- Mental Illness - Adult (MI)
- Mental Illness - Juvenile (MIJ)

Paternity Cases

This reporting category includes the following “cause-of-action” codes within SCOMIS case type 5:

- Modification (MOD)
- Paternity (PAT)
- Paternity/URESA/UIFSA (PUR)

Probate Cases

This reporting category includes the following “cause-of-action” codes within SCOMIS case type 4:

- Absentee (ABS)
- Disclaimer (DSC)
- Estate (EST)
- Foreign Will (FNW)
- Miscellaneous (MSC)
- Non-Probate Notice to Creditors (NNC)
- Will Only (WLL)

Total Cases

New cases with case numbers assigned, excluding “Matters Filed with Clerk” and “Additional Filings with Clerk”.

Year-to-Date Filings

Total number of new filings since the beginning of calendar year (January 1) to the end of reporting period.

Section II. Resolution Category

Adoption - Resolved by Trial

Court Decision after Non-Jury Trial (CDAT)

Adoption - Uncontested

Consolidated Case (CONS)
Uncontested Resolution (UNDS)

Adoption - Settlement/Dismissal

Closed by Court Order after a Hearing (CLCO)
Dismissal without Trial (DSM)
Dismissal after Non-Jury Trial Commencement (DAT)
Settled after Non-Jury Trial Commencement (SAT)
Settled by Parties/Agreed Judgment (STPR)

Adoption - Closure by Clerk

Dismissal/Closure by Clerk (DSCK)

Adoption - Others

Change of Venue/Jurisdiction (CHV)
Other Non-specified Resolutions

Civil - Resolved by Jury Trial

Jury Verdict after Trial (JVAT)

Civil - Resolved by Non-Jury Trial

Court Decision after Non-Jury Trial (CDAT)

Civil - Summary Judgment

Summary Judgment (SMJG)

Civil - Default/Uncontested

Consolidated Case (CONS)
Default Judgment (DFJG)
Uncontested Resolution (UNDS)

Civil - Arbitration

Settle by Arbitration (ARBA)

Civil - Settlement/Dismissal

Closed by Court Order after a Hearing (CLCO)
Dismissal after Non-Jury Trial (DAT)
Dismissal after Jury Trial (DJT)
Dismissal (DSM)
Settled after Non-Jury Trial Commencement (SAT)
Settled after Jury Trial Commencement (SJT)
Settled by Parties/Agreed Judgment (STPR)

Civil - Closure by Clerk

Dismissal/Closure by Clerk (DSCK)

Civil - Others

Transferred to Federal bankruptcy Court (BANK)
Change of Venue/Jurisdiction (CHV)
Other Non-specified Resolutions

Civil RALJ - RALJ Decision

Court Decision to Affirm Appeal/review (CDTA)
Court Decision to Modify Appeal/Review (CDTM)
Court Decision to Reverse Appeal/review (CDTR)

Civil RALJ - Dismissal

Dismissal and Remand of Appeal/Review (DSRM)

Civil RALJ - Others

Other Non-specified Resolutions

Comparison with Court Standard

Percentage of cases actually falling within the Court’s standard benchmark.

Court Standard

Benchmarks set by a state advisory committee and adopted by the court indicating percentage of cases to be resolved at certain age (in months, 1 month = 30 days as used in the Advisory Case Processing Time Standard as published in the Court Rule).

Court standard is based on timelines as suggested by State Advisory Committee. For a case type with no time standard, the standard for a similar case type is adopted if appropriate.

Criminal: 90% by 4 months, 98% by 6 months, 100% by 9 months.

Civil: 90% by 12 months, 98% by 18 months, 100% by 24 months.

Domestic: 90% by 8 months, 98% by 10 months, 100% by 14 months.

Probate/Guardianship: 90% by 8 months, 98% by 18 months, 100% by 36 months.

Adoption/Paternity: 90% by 8 months, 98% by 10 months, 100% by 14 months.

Mental Illness/Juvenile Truancy: No standard yet.

Juvenile Dependency: 90% by 8 months, 98% by 10 months, 100% by 14 months.

Juvenile Offender: 90% by 4 months, 98% by 6 months, 100% by 9 months.

Criminal RALJ/Civil RALJ: 90% by 4 months, 98% by 5 months, 100% by 6 months.

Criminal - Resolved by Jury Trial

Acquittal by Jury (AQJV)
Convicted - Jury Verdict after Trial (CVJV)

Criminal - Resolved by Non-Jury Trial

Acquittal by Court (AQCT)
Convicted - Court Decision after Non-Jury Trial (CVCT)

Criminal - Resolved by Guilty Plea

Guilty Plea (GP)
Guilty Plea after Non-Jury Trial Commencement (GPAT)
Guilty Plea after Jury Trial Commencement (GPJT)

Criminal - Dismissal

Dismissal after Non-Jury Trial Commencement (DAT)
Dismissal after Jury Trial Commencement (DJT)
Dismissal (DSM)

Criminal - Others

Change of Venue (CHV)
Consolidated Case (CONS)
Continued Order of Prosecution with Completion (CTOP)*
Deferred Prosecution (DFPD)
Dismissal/Closure by Clerk (DSCK)
Governor’s warrant (GW)
Not Guilty by Reason of Insanity (NGRI)
Uncontested Resolution (UNDS)
Waiver of Extradition (WE)
Other Non-specified Resolutions

* Note: For adult criminal cases, “CTOP” does not necessarily constitute resolution. An adult criminal case with a “CTOP” as resolution code is counted as a resolved case only if a completion code exists along with the “CTOP”. If the resolution code is CTOP and there is no completion code, then the case is treated as unresolved. The primary reason for combining “CTOP” with a completion code is to determine

resolution for drug court cases (CTOP is entered in the SCOMIS resolution field as soon as a defendant enrolls in Drug Court). This rule on “CTOP” applies to adult criminal cases only.

Criminal RALJ - RALJ Decision

Court Decision to Affirm Appeal/review (CDTA)
Court Decision to Modify Appeal/Review (CDTM)
Court Decision to Reverse Appeal/review (CDTR)

Criminal RALJ - Dismissal

Dismissal and Remand of Appeal/Review (DSRM)

Criminal RALJ - Others

Other Non-specified Resolutions

Domestic - Resolved by Trial

Court Decision after Non-Jury Trial (CDAT)

Domestic - Default/Uncontested

Consolidated Case (CONS)
Default Judgment (DFJG)
Uncontested Resolution (UNDS)

Domestic - Settlement/Dismissal

Settled by Arbitration (ARBA)
Closed by Court Order after a Hearing (CLCO)
Dismissal after Non-Jury Trial Commencement (DAT)
Dismissal (DSM)
Settled after Non-Jury Trial Commencement (SAT)
Settled by Parties/Agreed Judgment (STPR)

Domestic - Closure by Clerk

Dismissal/Closure by Clerk (DSCK)

Domestic - Others

Change of Venue/Jurisdiction (CHV)
Summary Judgment (SMJG)
Other Non-specified Resolutions

Guardianship - Guardian Appointed

Guardian Appointed (PRGA)

Guardianship - Dismissal

Closed by Court Order after a Hearing (CLCO)
Dismissal (DSM)

Guardianship - Closure by Clerk

Dismissal/Closure by Clerk (DSCK)

Guardianship - Others

Change of Venue/Jurisdiction (CHV)
Consolidated Case (CONS)
Uncontested Resolution (UNDS)
Other Non-specified Resolutions

Juvenile Dependency - Finding of Dependency

Approved Petition (APP)

Juvenile Dependency - Dismissal

Dismissal (DSM)

Juvenile Dependency - Others

Change of Venue/Jurisdiction (CHV)
Consolidated Case (CONS)
Transfer of Jurisdiction (TRJU)
Other Non-specified Resolutions

Juvenile Offender - Resolved by Trial

Acquittal by Court (AQCT)
Convicted - Court Decision after Adjudictory Hearing (CVCT)

Juvenile Offender - Resolved by Guilty Plea

Guilty Plea before Adjudictory Hearing Commencement (GP)
Guilty Plea after Adjudictory Hearing Commencement (GPAT)

Juvenile Offender - Dismissal

Dismissal after Adjudictory Hearing Commencement (DAT)
Dismissal (DSM)

Juvenile Offender - Others

Change of venue (CHV)
Dismissal/Closure by Clerk (DSCK)
Consolidated Case (CONS)

Continued Prosecution (CTOP)
Decline of Jurisdiction (DECL)
Uncontested Resolution (UNDS)
Other Non-specified Resolutions

Juvenile Truancy - Finding of Truancy

Approved Petition (APP)

Juvenile Truancy - Dismissal

Dismissal (DSM)

Juvenile Truancy - Others

Change of Venue (CHV)
Consolidated Case (CONS)
Transfer of Jurisdiction (TRJU)
Other Non-specified Resolutions

Mental Illness - Court Decision to Commit

Court Decision to Commit (CDTC)

Mental Illness - Closed by Court

Closed by Court (CLCO)

Mental Illness - Dismissal

Dismissal (DSM)

Mental Illness - Others

Change of Venue/Jurisdiction (CHV)
Uncontested Resolution (UNDS)
Other Non-specified Resolutions

Paternity - Resolved by Trial

Court Decision after Non-Jury Trial (CDAT)

Paternity - Summary Judgment

Summary Judgment (SMJG)

Paternity - Default/Uncontested

Consolidated Case (CONS)
Default Judgment (DFJG)
Uncontested Resolution (UNDS)

Paternity - Settlement/Dismissal

Settled by Arbitration (ARBA)
Closed by Court Order after a Hearing (CLCO)
Dismissal after Non-Jury Trial Commencement (DAT)
Dismissal (DSM)
Settled after Non-Jury Trial Commencement (SAT)
Settled by Partied/Agreed Judgment (STPR)

Paternity - Closure by Clerk

Dismissal/Closure by Clerk (DSCK)

Paternity - Others

Change of Venue (CHV)
Other Non-specified Resolutions

Percentile

Percent of cases resolved at a given age. For example, if resolved cases had a 98 percentile of 12 months, it means that 98% of the cases were resolved within the age of 12 months, or conversely 2% of the cases were resolved after 12 months, not counting suspense time.

Probate - Personal Representative Appointed

Non-Intervention Probate (NIP)
Personal Representative Appointed (PRGA)

Probate - Dismissal

Closed by Court Order after a Hearing (CLCO)
Dismissal (DSM)

Probate - Closure by Clerk

Dismissal/Closure by Clerk (DSCK)

Probate - Others

Change of Venue (CHV)
Consolidated Case (CONS)
Uncontested Resolution (UNDS)
Other Non-specified Resolutions

Backlogged Cases

Active pending cases with an age exceeding the court-adopted time standard for each specific case type (recommended by the State Advisory Committee, see definition for *Court Standard*).

Section III. Pending Caseload

Adjustment

Adjustment made because of vacating of resolutions, or change in suspense status between two reporting period.

End Pending

Total number of pending cases at the end of reporting period.

Previous Pending

Total number of pending cases at the beginning of reporting period.

Resolution Rate

Resolution rate is defined as the ratio of number of resolutions to number of new filings (i.e., number of resolutions divided by number of new filings) during the reporting period. The resolution rate measures the relative pace of resolution in relation to the pace of new filings. A resolution rate of greater than 1 indicates the number of resolutions exceeds the number of new filings.

On-review Status

Cases that have been resolved (post-resolution) but still need court resources for periodic review and other remaining outstanding issues.

Probate (EST), Paternity (PAT) and Dependency (DEP): Resolved and not completed (paternity or dependency established, but outstanding issues remain).

Guardianship (GDN,LGD,G/E): Resolved and on tracks of G1,G2,G3,GE or GD; Minor Settlement (MST): Resolved with a future hearing date.

Section IV. Age of Pending Cases

Case Age

The age of a case is the time (number of days) since the filing date, less any suspense time if applicable.

Median Age

The median age is the time that 50% of the cases are under and 50% are above the given age. For example, if pending cases have a median age of 12 months, it means that 50% of the pending cases are within the age of 12 months, and 50% of pending cases are over 12 months. The median age is more robust to cases with extreme age values than the average age.

Suspense Time

Time (days) that a case is on suspense status before its resolution. If a case has more than one suspense between filing and resolution, the suspense time is the total from all suspenses. Time on suspense status after resolution (e.g., appeals) is not counted.