

King County Superior Court
Quarterly Statistical Report

Fourth Quarter 2011

Department of Judicial Administration
Prepared by: Shiquan Liao, Ph.D., Statistician

Release Date: January 20, 2012

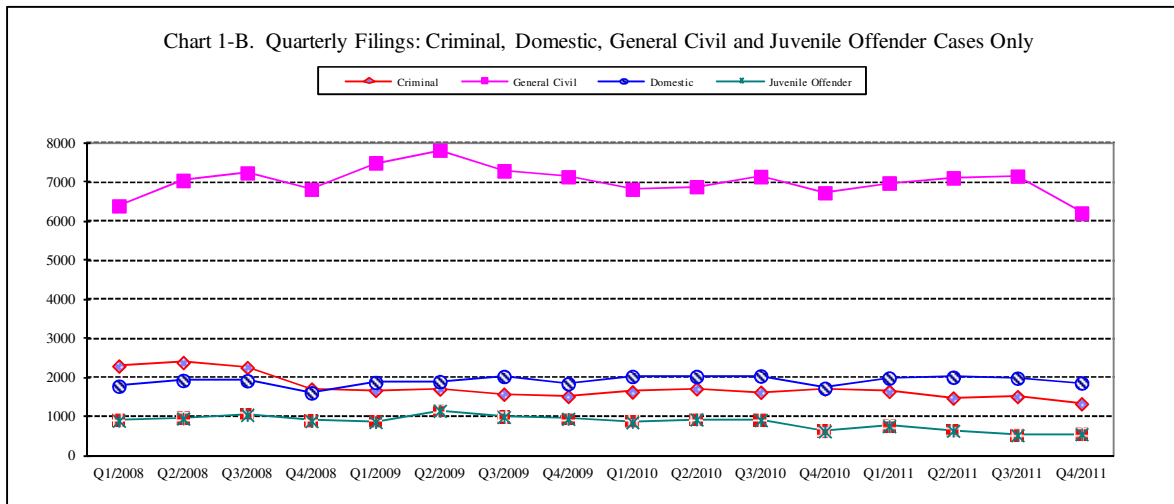
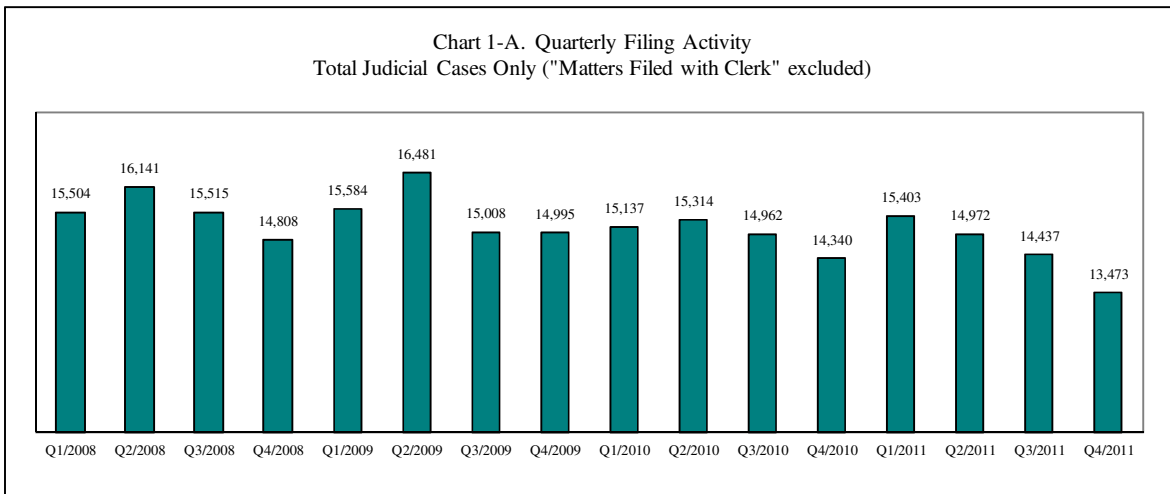
Report #: QTR-2011-4

Table 1. Year-to-Date Filing Activity

King County Superior Court

Reporting Category	Year-to-Date (Jan 1 to Dec 31) and Annual Filing Activity ⁽¹⁾					2010-2011 change (+ means "increase")		% of 2011 Total Filing ⁽²⁾
	2007	2008	2009	2010	2011	Cases	Percentage	
Total (incl. RALJ)								
Year-to-Date Filing	63057	62018	62148	59798	58337	-1461	-2.5%	
Annual Filing	63057	62018	62148	59798				
Criminal (excl. RALJ)								
Year-to-Date Filing	10767	8667	6498	6691	5986	-705	-10.5%	10.3%
Annual Filing	10767	8667	6498	6691				
General Civil (excl. Asbestos)								
Year-to-Date Filing	25893	27509	29789	27603	27499	-104	-0.4%	47.1%
Annual Filing	25893	27509	29789	27603				
Asbestos Cases (civil)⁽³⁾								
Year-to-Date Filing	127	68	32	29	43	+15	+51.7%	0.1%
Annual Filing	127	68	32	29				
Domestic								
Year-to-Date Filing	7720	7254	7673	7850	7865	+15	+0.2%	13.5%
Annual Filing	7720	7254	7673	7850				
Probate								
Year-to-Date Filing	5363	5373	5110	5203	5417	+214	+4.1%	9.3%
Annual Filing	5363	5373	5110	5203				
Guardianship								
Year-to-Date Filing	885	901	841	893	837	-56	-6.3%	1.4%
Annual Filing	885	901	841	893				
Adoption								
Year-to-Date Filing	717	772	685	686	688	+2	+0.3%	1.2%
Annual Filing	717	772	685	686				
Paternity								
Year-to-Date Filing	1421	1147	1233	1189	1039	-150	-12.6%	1.8%
Annual Filing	1421	1147	1233	1189				
Mental Illness								
Year-to-Date Filing	2397	2420	2727	3059	3506	+447	+14.6%	6.0%
Annual Filing	2397	2420	2727	3059				
Juvenile Dependency								
Year-to-Date Filing	971	888	903	1038	1060	+22	+2.1%	1.8%
Annual Filing	971	888	903	1038				
Juvenile ARY/CHINS								
Year-to-Date Filing	411	417	341	347	303	-44	-12.7%	0.5%
Annual Filing	411	417	341	347				
Juvenile Truancy								
Year-to-Date Filing	2111	2512	2083	1614	1350	-264	-16.4%	2.3%
Annual Filing	2111	2512	2083	1614				
Juvenile Offender								
Year-to-Date Filing	3954	3803	3967	3356	2496	-860	-25.6%	4.3%
Annual Filing	3954	3803	3967	3356				
Criminal RALJ								
Year-to-Date Filing	225	214	180	176	191	+15	+8.5%	0.3%
Annual Filing	225	214	180	176				
Civil RALJ								
Year-to-Date Filing	95	73	86	64	57	-7	-10.9%	0.1%
Annual Filing	95	73	86	64				
Matters Filed with Clerk⁽⁴⁾								
Year-to-Date Filing	12784	13881	14662	15586	14799	-787	-5.0%	
Annual Filing	12784	13881	14662	15586				

- (1) New filings only (based on filing date), excluding re-opened cases (unable to count), and reflecting all documents received by 01/15/2012.
- (2) New filings of each reporting category as percentage of "Year-to-Date Filing".
- (3) "Matters Filed with Clerk" and "Additional Filings with Clerk" are not included in the "Total".



* Note: "General Civil" is specifically defined in this report. The category of "General Civil" does **not** include the following case types: domestic, probate, guardianship, adoption, paternity, mental illness, juvenile cases (dependency, at-risk youth, child-in-need of service, civil RALJ, and tax filings that don't require judicial resources ("matters filed with clerk"). Please check the Appendix for the cause codes in the "General Civil" category.

Table 1-A. Post-Resolution Modifications (Domestic and Paternity Cases)

Based on Tracks Opened After Original Resolution Date

		2009Q1			2009Q2			2009Q3			2009Q4			Year 2009		
Location	Case Type	DMOD	DTBA	Total	DMOD	DTBA	Total	DMOD	DTBA	Total	DMOD	DTBA	Total	DMOD	DTBA	Total
KNT	Domestic	110	64	174	102	82	184	129	72	201	142	94	236	483	312	795
	Paternity	25	17	42	18	19	37	21	15	36	18	12	30	82	63	145
KNT Total		135	81	216	120	101	221	150	87	237	160	106	266	372	375	940
SEA	Domestic	118	94	212	117	115	232	121	79	200	110	99	209	466	387	853
	Paternity	13	29	42	25	49	74	21	37	58	21	17	38	80	132	212
SEA Total		131	123	254	142	164	306	142	116	258	131	116	247	546	519	1065
KNT/SEA Total		266	204	470	262	265	527	292	203	495	291	222	513	1111	894	2005
		2010Q1			2010Q2			2010Q3			2010Q4			Year 2010		
Location	Case Type	DMOD	DTBA	Total	DMOD	DTBA	Total	DMOD	DTBA	Total	DMOD	DTBA	Total	DMOD	DTBA	Total
KNT	Domestic	134	75	209	155	86	241	153	69	222	117	53	170	559	283	842
	Paternity	20	20	40	11	19	30	24	13	37	20	10	30	75	62	137
KNT Total		154	95	249	166	105	271	177	82	259	137	63	200	634	345	979
SEA	Domestic	116	79	195	142	105	247	133	71	204	116	77	193	507	332	839
	Paternity	16	13	29	16	23	39	22	19	41	17	20	37	71	75	146
SEA Total		132	92	224	158	128	286	155	90	245	133	97	230	578	407	985
KNT/SEA Total		286	187	473	324	233	557	332	172	504	270	160	430	1212	752	1964
		2011Q1			2011Q2			2011Q3			2011Q4			Year 2011		
Location	Case Type	DMOD	DTBA	Total	DMOD	DTBA	Total	DMOD	DTBA	Total	DMOD	DTBA	Total	DMOD	DTBA	Total
KNT	Domestic	151	65	216	165	76	241	135	54	189	150	67	217	601	262	863
	Paternity	22	6	28	23	10	33	20	3	23	18	3	21	83	22	105
KNT Total		173	71	244	188	86	274	155	57	212	168	70	238	684	284	968
SEA	Domestic	118	75	193	151	106	257	143	75	218	155	76	231	567	332	899
	Paternity	19	19	38	17	23	40	19	30	49	7	17	24	62	89	151
SEA Total		137	94	231	168	129	297	162	105	267	162	93	255	629	421	1050
KNT/SEA Total		310	165	475	356	215	571	317	162	479	330	163	493	1313	705	2018

* DMOD = parenting plan modification track; DTBA = support modification track.

Table 2. Number of Cases Resolved and Resolution Category (%)

King County Superior Court

Reporting Category	Q1/10	Q2/10	Q3/10	Q4/10	Q1/11	Q2/11	Q3/11	Q4/11*
Total Resolutions (excl. "Matters Filed with Clerk")	15114	16358	16552	14957	15842	16070	15396	14291
Criminal (excl. RALJ): # Resolved	1590	1649	1712	1500	1680	1599	1522	1466
Resolved by Jury Trial	4.5%	3.9%	4.1%	4.2%	4.8%	3.8%	4.6%	4.1%
Resolved by Non-Jury Trial	1.1%	2.8%	1.5%	1.2%	1.6%	1.3%	1.1%	0.6%
Resolved by Guilty Plea	77.2%	77.2%	79.4%	80.4%	76.3%	78.4%	78.1%	78.4%
Dismissal	16.8%	16.0%	14.8%	13.6%	16.8%	16.1%	15.6%	16.6%
Others	0.3%	0.2%	0.3%	0.6%	0.5%	0.4%	0.6%	0.3%
General Civil: # Resolved	7359	7680	7610	7280	7652	7866	7293	6905
Resolved by Jury Trial	0.4%	0.3%	0.5%	0.5%	0.5%	0.4%	0.4%	0.5%
Resolved by Non-Jury Trial	0.5%	0.3%	0.5%	0.4%	0.4%	0.4%	0.3%	0.3%
Summary Judgment	1.9%	2.3%	2.0%	2.3%	1.7%	1.8%	1.7%	1.9%
Default/ Uncontested	40.2%	40.2%	41.7%	39.6%	38.9%	42.2%	43.6%	40.5%
Arbitration	1.8%	1.7%	1.9%	2.1%	1.8%	2.0%	2.3%	2.5%
Settlement/Dismissal	51.4%	51.1%	50.3%	50.9%	52.5%	49.5%	48.4%	50.1%
Closure by Clerk	2.4%	3.0%	2.2%	3.5%	3.4%	2.8%	2.6%	3.6%
Others	1.4%	1.1%	0.9%	0.8%	0.9%	0.8%	0.7%	0.7%
Asbestos Cases (civil): # Resolved	53	26	11	10	4	21	8	18
Resolved by Jury Trial	1.9%	0.0%	0.0%	10.0%	0.0%	0.0%	0.0%	5.6%
Resolved by Non-Jury Trial	0.0%	0.0%	0.0%	0.0%	0.0%	0.0%	0.0%	0.0%
Summary Judgment	3.8%	3.9%	9.1%	10.0%	25.0%	0.0%	0.0%	5.6%
Default/ Uncontested	0.0%	0.0%	9.1%	30.0%	25.0%	4.8%	25.0%	0.0%
Arbitration	0.0%	0.0%	0.0%	0.0%	0.0%	0.0%	0.0%	0.0%
Settlement/Dismissal	90.1%	96.2%	81.8%	40.0%	50.0%	95.2%	75.0%	88.9%
Closure by Clerk	3.8%	0.0%	0.0%	0.0%	0.0%	0.0%	0.0%	0.0%
Others	0.0%	0.0%	0.0%	10.0%	0.0%	0.0%	0.0%	0.0%
Domestic: # Resolved	1833	2021	2030	1966	1991	2002	2004	2024
Resolved by Trial	4.5%	4.8%	4.0%	4.7%	4.4%	4.9%	3.5%	3.7%
Default/ Uncontested	8.7%	8.8%	9.8%	7.9%	8.4%	9.5%	9.8%	9.0%
Settlement /Dismissal	86.0%	85.3%	84.8%	85.0%	86.0%	84.4%	85.1%	85.7%
Closure by Clerk	0.6%	0.7%	0.8%	1.8%	0.7%	0.8%	1.3%	1.5%
Others	0.2%	0.5%	0.6%	0.6%	0.5%	0.5%	0.3%	0.1%
Probate: # Resolved	1276	1348	1356	1274	1495	1497	1265	1200
Personal Rep. Appointed	74.8%	74.4%	72.6%	74.2%	72.2%	71.1%	72.2%	72.5%
Dismissal	1.9%	3.6%	2.7%	2.8%	2.1%	3.3%	2.3%	2.56%
Closure by Clerk	0.0%	0.2%	0.2%	0.6%	0.2%	0.0%	0.1%	0.1%
Others	23.3%	21.7%	24.6%	22.5%	25.5%	25.5%	25.5%	24.8%
Guardianship: # Resolved	225	256	241	225	207	203	222	190
Guardian Appointed	52.9%	51.2%	60.6%	60.4%	53.1%	55.2%	47.8%	52.6%
Dismissal	47.1%	48.8%	39.0%	38.7%	45.9%	44.3%	52.3%	46.8%
Closure by Clerk	0.0%	0.0%	0.0%	0.0%	0.0%	0.0%	0.0%	0.0%
Others	0.0%	0.0%	0.4%	0.9%	1.0%	0.5%	0.0%	0.5%
Adoption: # Resolved	150	196	164	186	154	173	151	237
Resolved by Trial	2.7%	0.0%	0.6%	0.0%	0.0%	0.0%	0.7%	0.0%
Uncontested	8.7%	2.6%	3.7%	0.5%	9.7%	2.3%	2.0%	3.0%
Settlement /Dismissal	88.7%	96.9%	95.7%	98.9%	88.3%	94.8%	96.7%	96.6%
Closure by Clerk	0.0%	0.0%	0.0%	0.0%	0.0%	1.2%	0.7%	0.4%
Others	0.0%	0.5%	0.0%	0.5%	2.0%	1.2%	0.0%	0.0%
Paternity: # Resolved	233	374	332	352	332	250	270	256
Resolved by Trial	2.2%	2.1%	0.9%	0.6%	1.2%	0.4%	1.1%	0.4%
Summary Judgment	32.2%	36.6%	42.8%	50.3%	45.2%	40.0%	42.6%	43.0%
Default/ Uncontested	19.7%	31.8%	23.8%	21.9%	21.4%	21.2%	21.9%	23.1%
Settlement/Dismissal	44.6%	29.4%	32.5%	27.3%	32.2%	38.0%	34.1%	33.2%
Closure by Clerk	1.3%	0.0%	0.0%	0.0%	0.0%	0.0%	0.4%	0.4%
Others	0.0%	0.0%	0.0%	0.0%	0.0%	0.4%	0.0%	0.0%

Reflecting all documents received by 01/15/2012.

Table 2 (cont.). Number of Cases Resolved and Resolution Category (%)

King County Superior Court

Reporting Category	Q1/10	Q2/10	Q3/10	Q4/10	Q1/11	Q2/11	Q3/11	Q4/11*
Mental Illness: # Resolved	719	813	801	738	829	865	841	895
Court Decision to Commit	73.9%	65.3%	69.5%	71.3%	65.9%	67.5%	70.1%	64.0%
Closed by Court	0.3%	0.0%	0.1%	0.0%	0.0%	0.0%	0.0%	0.0R
Dismissal	12.4%	27.1%	21.7%	21.1%	19.8%	22.1%	23.2%	21.7%
Others	13.5%	7.6%	8.6%	7.6%	14.4%	10.4%	6.4%	14.3%
Juvenile Dependency: # Resolved	245	284	336	217	305	227	277	272
Finding of Dependency	53.1%	58.8%	58.0%	58.1%	72.5%	58.6%	74.0%	68.8%
Dismissal	46.2%	40.1%	41.7%	41.9%	26.9%	40.5%	26.0%	30.9%
Others	0.8%	1.1%	0.3%	0.0%	0.7%	0.9%	0.0%	0.4%
Juvenile ARY/CHINS: # Resolved	108	99	88	165	92	82	76	58
Approve of Petition	33.3%	30.3%	36.4%	55.8%	41.3%	40.2%	46.1%	53.5%
Dismissal	66.7%	69.7%	63.6%	44.3%	58.7%	59.8%	54.0%	43.1%
Others	0.0%	0.0%	0.0%	0.0%	0.0%	0.0%	0.0%	3.5%
Juvenile Truancy: # Resolved	304	751	1061	147	282	514	743	219
Approve of Petition	16.8%	4.8%	0.0%	15.0%	26.6%	16.7%	0.0%	5.5%
Dismissal	83.2%	95.2%	99.8%	83.0%	73.4%	82.5%	38.2%	94.5%
Others	0.0%	0.0%	0.2%	2.0%	0.0%	0.8%	61.8%	0.0%
Juvenile Offender: # Resolved	953	789	736	815	754	747	664	492
Resolved by Trial (Fact Finding)	3.9%	5.7%	9.0%	6.4%	5.6%	7.1%	3.3%	5.7%
Resolved by Guilty Plea	39.8%	38.0%	43.9%	33.9%	40.2%	39.2%	35.2%	38.0%
Dismissal	53.4%	53.0%	44.6%	56.4%	49.7%	45.5%	42.3%	39.0%
Deferred Disposition (DDSP)	NA	NA	NA	NA	NA	4.7%	15.5%	11.8%
Others (including Deferred Prosecution)	2.9%	3.3%	2.6%	3.3%	4.5%	3.5%	3.6%	5.5%
Criminal RALJ: # Resolved	54	47	56	61	50	46	47	46
RALJ Decision	66.7%	70.2%	64.3%	57.4%	56.0%	73.9%	70.2%	80.4%
Dismissal	24.1%	23.4%	26.8%	39.3%	28.0%	19.6%	27.7%	15.2%
Others	9.3%	6.4%	8.9%	3.3%	16.0%	6.5%	2.1%	4.4%
Civil RALJ: # Resolved	12	25	18	21	15	13	13	13
RALJ Decision	50.0%	48.0%	55.6%	47.6%	40.0%	53.9%	69.2%	23.1%
Dismissal	33.3%	44.0%	33.3%	47.6%	60.0%	46.1%	30.8%	38.5%
Others	16.7%	8.0%	11.1%	4.8%	0.0%	0.0%	0.0%	38.5%

* Reflecting all documents received by 01/15/2012.

Chart 2-A. Quarterly Resolutions
Total Judicial Cases Only ("Matters Filed with Clerk" excluded)

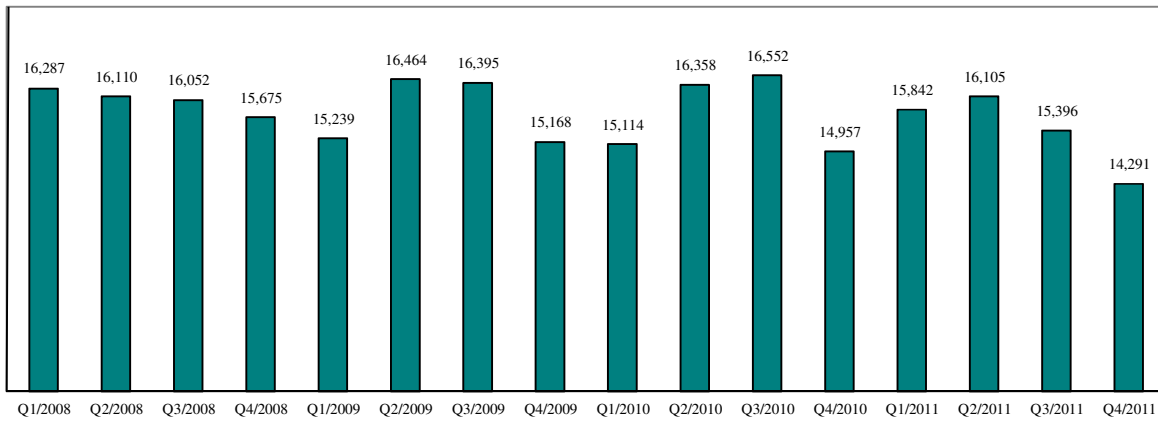
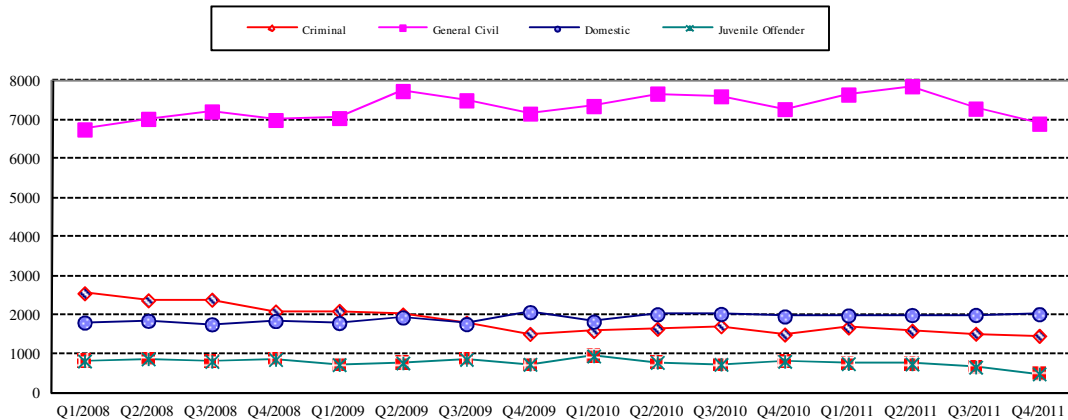


Chart 2-B. Quarterly Resolutions: Criminal, Dmestic, General Civil and Juvenile Offender Cases Only



* Note: "General Civil" is specifically defined in this report. The category of "General Civil" does **not** include the following case types: domestic, probate, guardianship, adoption, paternity, mental illness, juvenile cases (dependency, at-risk youth, child-in-need of service), civil RALJ, and tax filings that don't require judicial resources ("matters filed with clerk"). Please check the Appendix for the cause codes in the "General Civil" category.

Table 3. Age of Resolved Cases
King County Superior Court

Reporting Category	Age of Cases at Resolution							
	Q1/10	Q2/10	Q3/10	Q4/10	Q1/11	Q2/11	Q3/11	Q4/11*
Criminal (excl. RALJ)								
Age (days)								
50% Cases Resolved by Day	99	95	97	89	105	93	105	105
90% Cases Resolved by Day	394	367	345	298	357	302	361	347
98% Cases Resolved by Day	730	946	945	811	867	777	1097	722
Comparison with Court Standard of								
90% in 4 months	59%	60%	61%	61%	57%	63%	56%	56%
98% in 6 months	75%	74%	77%	78%	73%	77%	72%	72%
100% in 9 months	85%	84%	87%	88%	85%	88%	84%	85%
General Civil ⁽¹⁾								
Age (days)								
50% Cases Resolved by Day	36	35	26	28	28	22	26	34
90% Cases Resolved by Day	508	525	476	518	518	494	491	502
98% Cases Resolved by Day	671	777	667	742	713	702	672	705
Comparison with Court Standard of								
90% in 12 months	85%	82%	87%	82%	84%	85%	86%	83%
98% in 18 months	94%	92%	95%	92%	93%	94%	95%	93%
100% in 24 months	99%	97%	99%	98%	98%	98%	99%	98%
Domestic								
Age (days)								
50% Cases Resolved by Day	162	158	150	169	182	166	162	158
90% Cases Resolved by Day	400	370	375	424	394	385	390	384
98% Cases Resolved by Day	607	591	581	600	579	599	2641	628
Comparison with Court Standard of								
90% in 8 months	67%	67%	68%	65%	63%	64%	67%	69%
98% in 10 months	84%	75%	75%	74%	72%	73%	74%	76%
100% in 14 months	91%	94%	93%	90%	92%	91%	92%	92%
Probate								
Age (days)								
50% Cases Resolved by Day	0	0	0	0	0	0	0	0
90% Cases Resolved by Day	23	13	16	6	15	15	12	6
98% Cases Resolved by Day	565	659	630	282	283	401	281	165
Comparison with Court Standard of								
90% in 8 months	94%	95%	96%	97%	98%	97%	97%	98%
98% in 18 months	98%	97%	97%	99%	99%	99%	99%	99%
100% in 36 months	100%	99%	99%	100%	99%	99%	100%	100%
Guardianship								
Age (days)								
50% Cases Resolved by Day	78	62	62	61	64	63	62	60
90% Cases Resolved by Day	983	393	244	197	237	469	191	203
98% Cases Resolved by Day	4356	1355	665	728	576	800	535	644
Comparison with Court Standard of								
90% in 8 months	75%	87%	89%	92%	90%	82%	92%	92%
98% in 18 months	86%	94%	98%	99%	98%	94%	98%	97%
100% in 36 months	92%	97%	99%	100%	100%	99%	100%	100%
Adoption								
Age (days)								
50% Cases Resolved by Day	51	36	58	48	67	46	70	31
90% Cases Resolved by Day	369	259	518	221	658	259	260	259
98% Cases Resolved by Day	549	647	890	556	1421	735	829	332
Comparison with Court Standard of								
90% in 8 months	87%	90%	82%	90%	80%	89%	90%	88%
98% in 10 months	89%	94%	85%	92%	82%	91%	92%	89%
100% in 14 months	94%	95%	87%	96%	83%	95%	93%	93%
Paternity								
Age (days)								
50% Cases Resolved by Day	163	170	161	169	160	121	128	117
90% Cases Resolved by Day	328	298	297	280	287	253	290	244
98% Cases Resolved by Day	521	505	444	447	435	346	441	441
Comparison with Court Standard of								
90% in 8 months	77%	80%	79%	80%	84%	89%	85%	89%
98% in 10 months	85%	90%	90%	93%	91%	97%	92%	94%
100% in 14 months	96%	95%	97%	96%	98%	100%	97%	97%

Table 3 (cont.) Age of Resolved Cases
King County Superior Court

Reporting Category	Age of Cases at Resolution							
	Q1/10	Q2/10	Q3/10	Q4/10	Q1/11	Q2/11	Q3/11	Q4/11*
Mental Illness**								
Age (days)								
50% Cases Resolved by Day	3	3	3	2	3	3	2	3
90% Cases Resolved by Day	19	29	14	9	15	11	8	14
98% Cases Resolved by Day	96	356	346	22	324	29	16	449
Juvenile Dependency								
Age (days)								
50% Cases Resolved by Day	154	122	106	82	133	99	91	129
90% Cases Resolved by Day	1556	1337	1029	759	495	470	329	573
98% Cases Resolved by Day	3469	2906	3716	2187	1704	3421	648	1553
Comparison with Court Standard of								
90% in 8 months	60%	68%	73%	81%	62%	82%	88%	75%
98% in 10 months	63%	71%	74%	83%	69%	84%	89%	77%
100% in 14 months	68%	74%	75%	87%	83%	88%	93%	86%
Juvenile ARY/CHINS								
Age (days)								
50% Cases Resolved by Day	44	38	49	151	26	26	35	36
90% Cases Resolved by Day	284	262	242	342	257	226	310	231
98% Cases Resolved by Day	2059	1585	300	1317	1037	330	644	646
Comparison with Court Standard of								
90% in 8 months	87%	86%	88%	80%	87%	91%	93%	94%
98% in 10 months	93%	93%	98%	88%	91%	94%	94%	96%
100% in 14 months	94%	97%	100%	92%	98%	100%	96%	96%
Juvenile Truancy**								
Age (days)								
50% Cases Resolved by Day	17	56	20	13	13	22	48	19
90% Cases Resolved by Day	88	1284	644	62	46	70	2401	204
98% Cases Resolved by Day	429	1640	1546	390	259	148	2775	282
Juvenile Offender								
Age (days)								
50% Cases Resolved by Day	73	61	59	68	72	69	78	69
90% Cases Resolved by Day	350	190	175	295	203	220	219	199
98% Cases Resolved by Day	1179	647	408	1901	626	593	869	813
Comparison with Court Standard of								
90% in 4 months	72%	80%	78%	75%	71%	79%	73%	74%
98% in 6 months	83%	89%	91%	84%	87%	86%	86%	88%
100% in 9 months	88%	94%	95%	89%	93%	93%	92%	89%
Criminal RALJ								
Age (days)								
50% Cases Resolved by Day	348	294	272	252	224	245	257	253
90% Cases Resolved by Day	656	455	431	459	323	423	360	415
98% Cases Resolved by Day	1041	616	590	669	758	834	427	784
Comparison with Court Standard of								
90% in 4 months	2%	0%	5%	3%	20%	7%	13%	0%
98% in 5 months	2%	0%	5%	3%	22%	7%	13%	4%
100% in 6 months	6%	0%	7%	5%	26%	14%	15%	6%
Civil RALJ								
Age (days)								
50% Cases Resolved by Day	232	171	163	165	172	163	163	179
90% Cases Resolved by Day	312	247	218	315	379	283	210	205
98% Cases Resolved by Day	379	325	245	399	504	612	247	210
Comparison with Court Standard of								
90% in 4 months	17%	12%	22%	14%	20%	0%	15%	31%
98% in 5 months	17%	16%	33%	19%	67%	23%	23%	31%
100% in 6 months	17%	60%	72%	62%	73%	69%	85%	54%

* Reflecting all documents received by 01/15/2012.

** No standard yet.

Table 4. Active Pending Caseload Statistics

King County Superior Court

Reporting Category	Q1/10	Q2/10	Q3/10	Q4/10	Q1/11	Q2/11	Q3/11	Q4/11*
Total (incl. RALJ)								
Previous Pending (+)	22979	22982	22169	21682	21051	20676	20219	20411
New Filing (+)	15137	15314	14962	14340	15403	14972	14437	13473
Resolved (-)	15114	16358	16552	14957	15842	16070	15396	14291
End Pending	22982	22169	21682	21051	20676	20219	20411	19797
Resolution Rate**	0.998	1.068	1.106	1.043	1.023	1.073	1.066	1.061
Criminal (excl. RALJ)								
Previous Pending (+)	2582	2595	2837	2660	2791	2730	2671	2661
New Filing (+)	1638	1716	1630	1708	1655	1480	1518	1332
Resolved (-)	1590	1649	1712	1500	1680	1599	1522	1466
End Pending	2595	2837	2660	2791	2730	2671	2661	2549
Resolution Rate**	0.971	0.961	1.050	0.878	1.015	1.080	1.003	1.101
General Civil								
Previous Pending (+)	11166	10779	10117	10059	9883	9594	9279	9597
New Filing (+)	6825	6891	7148	6734	6984	7115	7160	6214
Resolved (-)	7359	7681	7610	7280	7652	7866	7293	6905
End Pending	10779	10117	10059	9883	9594	9279	9597	9153
Resolution Rate**	1.078	1.114	1.065	1.081	1.096	1.400	1.143	1.111
Asbestos Cases (civil) ⁽¹⁾								
Previous Pending (+)	133	91	83	95	86	91	86	90
New Filing (+)	5	6	11	3	9	15	7	8
Resolved (-)	53	26	11	10	4	21	8	18
End Pending	91	83	95	86	91	86	90	85
Resolution Rate**	10.6	4.337	1.000	3.333	0.444	1.106	1.019	2.250
Domestic								
Previous Pending (+)	4375	4624	4650	4673	4453	4479	4532	4538
New Filing (+)	2034	2033	2045	1731	1993	2015	1988	1865
Resolved (-)	1833	2021	2030	1966	1991	2002	2004	2024
End Pending	4624	4650	4673	4453	4479	4532	4538	4421
Resolution Rate**	0.901	0.994	0.993	1.136	0.999	0.994	1.008	1.085
Probate								
Previous Pending (+)	635	657	614	616	579	555	515	531
New Filing (+)	1275	1333	1327	1268	1490	1462	1261	1204
Resolved (-)	1276	1348	1356	1274	1495	1497	1265	1200
End Pending	657	614	616	579	555	515	531	559
Resolution Rate**	1.001	1.011	1.022	1.005	1.003	1.024	1.003	0.997
Guardianship								
Previous Pending (+)	304	308	277	269	248	242	250	250
New Filing (+)	221	236	227	207	204	209	220	203
Resolved (-)	225	256	241	225	207	203	222	190
End Pending	308	277	269	248	242	250	250	261
Resolution Rate**	1.018	1.085	1.062	1.087	1.015	0.971	1.009	0.936
Adoption								
Previous Pending (+)	225	250	232	242	215	224	226	211
New Filing (+)	173	177	172	164	163	173	134	218
Resolved (-)	150	196	164	186	154	173	151	237
End Pending	250	232	242	215	224	226	211	192
Resolution Rate**	0.867	1.107	0.953	1.134	0.945	1.000	1.127	1.087
Paternity								
Previous Pending (+)	523	622	572	560	436	369	372	401
New Filing (+)	332	308	314	234	264	247	298	230
Resolved (-)	233	374	332	352	332	250	270	256
End Pending	622	572	560	436	369	372	401	377
Resolution Rate**	0.702	1.214	1.057	1.504	1.258	1.012	0.906	1.113

* Reflecting all documents received by 01/15/2012.

** A value of "Resolution Rate" less than one indicates the resolution pace is slower than the filing pace.

Table 4 (cont.) Active Pending Caseload Statistics
King County Superior Court

Reporting Category		Q1/10	Q2/10	Q3/10	Q4/10	Q1/11	Q2/11	Q3/11	Q4/11*
Mental Illness									
Previous Pending	(+)	465	487	436	447	463	454	463	548
New Filing	(+)	730	769	805	754	827	873	926	878
Resolved	(-)	719	813	801	738	829	865	841	895
End Pending		487	436	447	463	454	463	548	530
Resolution Rate**		0.985	1.057	0.995	0.979	1.002	0.991	0.908	1.019
Juvenile Dependency									
Previous Pending	(+)	424	542	459	453	446	442	503	518
New Filing	(+)	280	264	236	259	288	271	261	240
Resolved	(-)	245	284	336	217	305	227	277	272
End Pending		542	459	453	446	442	503	518	522
Resolution Rate**		0.875	1.076	1.424	0.838	1.059	0.838	1.061	1.133
Juvenile ARY/CHINS									
Previous Pending	(+)	153	160	156	149	68	71	90	92
New Filing	(+)	108	105	68	65	89	90	62	62
Resolved	(-)	108	99	88	165	92	82	76	58
End Pending		160	156	149	68	71	90	92	94
Resolution Rate**		1.000	0.943	1.294	2.538	1.034	0.911	1.226	0.935
Juvenile Truancy									
Previous Pending	(+)	690	692	475	219	313	398	329	129
New Filing	(+)	595	474	14	529	606	311	16	414
Resolved	(-)	304	751	1061	147	282	514	763	219
End Pending		692	475	219	313	398	329	129	165
Resolution Rate**		0.511	1.584	75.79	0.278	0.465	1.653	46.438	0.529
Juvenile Offender									
Previous Pending	(+)	1091	967	1055	1070	913	863	726	670
New Filing	(+)	862	932	914	625	762	642	527	554
Resolved	(-)	953	789	736	815	754	743	664	492
End Pending		967	1055	1070	913	865	726	670	723
Resolution Rate**		1.106	0.847	0.805	1.304	0.990	1.164	1.260	0.888
Criminal RALJ									
Previous Pending	(+)	171	160	161	141	126	131	144	145
New Filing	(+)	41	49	39	46	54	55	49	33
Resolved	(-)	54	47	56	61	50	46	47	46
End Pending		160	161	141	126	131	144	145	132
Resolution Rate**		1.317	0.959	1.436	1.326	0.926	0.836	0.959	1.394
Civil RALJ									
Previous Pending	(+)	42	48	45	39	31	31	33	30
New Filing	(+)	18	21	12	13	15	14	10	18
Resolved	(-)	12	25	18	21	15	13	13	13
End Pending		48	45	39	31	31	33	30	34
Resolution Rate**		0.667	1.190	1.550	1.615	1.000	0.929	1.300	0.702

* Reflecting all documents received by 01/15/2012.

** A value of "Resolution Rate" less than one indicates the resolution pace is slower than the filing pace.

Chart 4-A. Active Pending Caseload at Quarter End
Total Judicial Cases Only ("Matters Filed with Clerk" excluded)

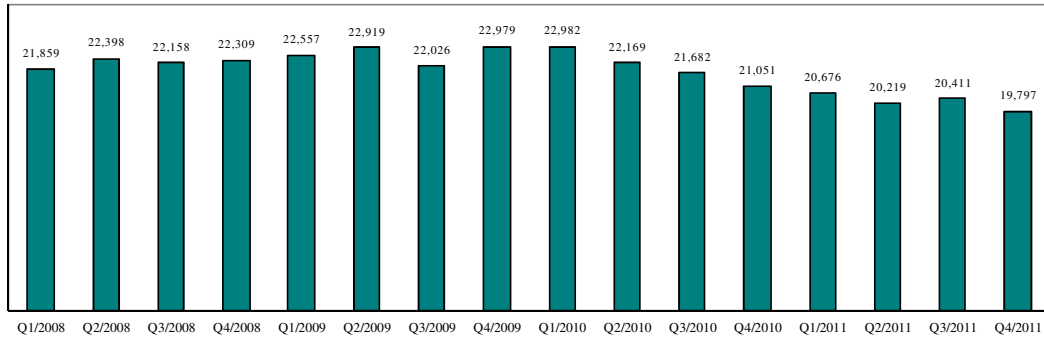


Chart 4-B. Active Pending Caseload at Quarter End: Domestic and General Civil Cases Only

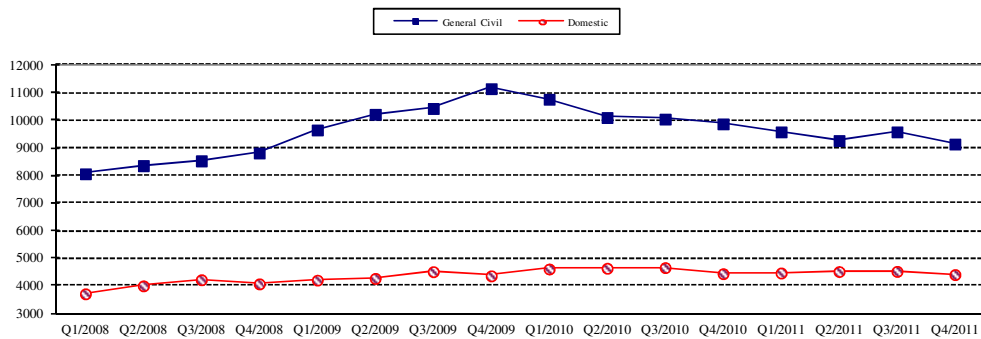
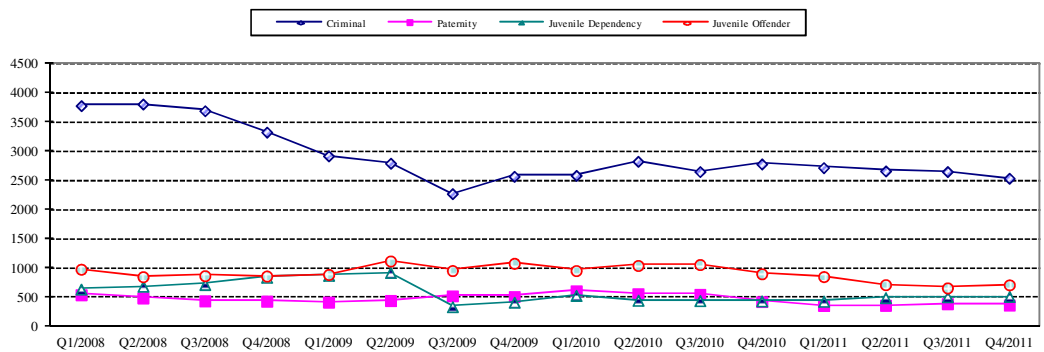


Chart 4-C. Active Pending Caseload at Quarter End:
Criminal, Juvenile Offender, Paternity and Dependency Cases Only



* Note: "General Civil" is specifically defined in this report. The category of "General Civil" does **not** include the following case types: domestic, probate, guardianship, adoption, paternity, mental illness, juvenile cases (dependency, at-risk youth, child-in-need of service), civil RALJ, and tax filings that don't require judicial resources ("matters filed with clerk"). Please check the Appendix for the cause codes in the "General Civil" category.

Table 5. Age of Pending Cases

King County Superior Court

Reporting Category	Age of Pending Cases and # of Cases in Each Age Interval							
	Q1/10	Q2/10	Q3/10	Q4/10	Q1/11	Q2/11	Q3/11	Q4/11*
Criminal (excl. RALJ): # of Cases	2595	2837	2660	2791	2730	2671	2661	2549
Age (days)								
Median (50 percentile)	93	79	100	95	95	106	109	116
95 percentile	715	687	711	694	596	570	577	601
# of Cases in Age Interval								
0 - 60 days (0 - 2 months)	991	1208	933	962	997	876	854	814
61 - 120 days (3 - 4 months)	493	566	605	624	569	571	541	474
121 - 180 days (5 - 6 months)	280	326	366	374	383	396	348	343
354 181 - 270 days (7 - 9 months)	276	229	277	336	293	312	354	310
564 > 270 days (> 9 months)	555	508	479	459	488	516	564	608
General Civil: # of Cases	10779	10117	10059	9883	9594	9279	9597	9153
Age (days)								
Median (50 percentile)	176	163	176	177	171	164	166	173
95 percentile	598	548	571	575	567	575	576	578
# of Cases in Age Interval								
0 - 120 days (0 - 4 months)	4208	4123	3965	3776	3884	3724	3858	3508
121 - 240 days (5 - 8 months)	2324	2094	2143	2232	1964	1976	2191	2089
241 - 360 days (9 - 12 months)	1807	1625	1565	1545	1574	1463	1411	1548
361 - 540 days (13 - 18 months)	1682	1738	1726	1676	1582	1538	1514	1397
541 - 720 days (19 - 24 months)	511	371	472	489	410	404	438	425
> 720 days (> 24 months)	247	166	188	165	180	174	185	186
Asbestos Cases (civil)⁽¹⁾ : # of Cases	91	83	85	86	91	86	90	85
Age (days)								
Median (50 percentile)	826	566	519	618	701	542	550	485
95 percentile	2162	2239	2326	2418	2513	2599	2416	1802
# of Cases in Age Interval								
0 - 120 days (0 - 4 months)	7	10	15	16	10	23	13	7
121 - 240 days (5 - 8 months)	11	9	8	9	6	1	17	14
241 - 360 days (9 - 12 months)	8	13	7	7	6	7	3	16
361 - 540 days (13 - 18 months)	6	9	15	14	12	12	11	9
541 - 720 days (19 - 24 months)	11	9	7	8	14	10	11	12
> 720 days (> 24 months)	48	33	33	32	43	33	35	27
Domestic: # of Cases	4624	4650	4673	4453	4479	4532	4538	4421
Age (days)								
Median (50 percentile)	115	114	119	128	115	107	114	122
95 percentile	442	457	477	484	473	490	487	527
# of Cases in Age Interval								
0 - 120 days (0 - 4 months)	2368	2444	2354	2127	2312	2443	2379	2188
121 - 240 days (5 - 8 months)	1231	1149	1291	1245	1114	1056	1226	1250
241 - 360 days (9 - 12 months)	644	652	570	688	629	603	514	579
361 - 540 days (13 - 18 months)	220	246	283	214	241	243	227	201
> 540 days (> 18 months)	161	159	175	179	183	187	192	212
Probate: # of Cases	657	614	616	579	555	515	531	559
Age (days)								
Median (50 percentile)	350	368	386	428	508	602	659	706
95 percentile	1597	1655	1696	1836	1926	2040	2112	2201
# of Cases in Age Interval								
0 - 120 days (0 - 4 months)	156	114	108	95	109	99	100	104
121 - 240 days (5 - 8 months)	102	111	97	65	33	28	44	54
241 - 360 days (9 - 12 months)	80	79	90	80	47	31	20	37
361 - 540 days (13 - 18 months)	109	80	93	105	113	70	47	29
> 540 days (> 18 months)	210	230	228	234	253	287	320	335

Reflecting all documents received by 01/15/2012.

Table 5 (cont.). Age of Pending Cases

King County Superior Court

Reporting Category	Age of Pending Cases and # of Cases in Each Age Interval							
	Q1/10	Q2/10	Q3/10	Q4/10	Q1/11	Q2/11	Q3/11	Q4/11*
Guardianship: # of Cases	308	277	269	248	242	250	250	261
Age (days)								
Median (50 percentile)	76	63	63	71	71	67	60	80
95 percentile	1157	609	632	613	679	617	652	507
# of Cases in Age Interval								
0 - 120 days (0 - 4 months)	172	173	164	159	153	165	162	158
121 - 240 days (5 - 8 months)	51	35	41	21	33	39	38	46
241 - 360 days (9 - 12 months)	28	30	22	23	12	22	22	29
361 - 540 days (13 - 18 months)	29	22	23	26	24	8	13	16
> 540 days (> 18 months)	28	17	19	19	20	16	15	12
Adoption: # of Cases	250	232	242	215	224	226	211	192
Age (days)								
Median (50 percentile)	119	163	129	162	123	119	150	141
95 percentile	2568	2724	2751	2963	2998	2900	2731	1619
# of Cases in Age Interval								
0 - 120 days (0 - 4 months)	126	100	116	88	108	113	99	92
121 - 240 days (5 - 8 months)	31	42	37	39	39	31	30	25
241 - 360 days (9 - 12 months)	24	16	26	17	19	24	22	23
361 - 540 days (13 - 18 months)	16	26	22	22	23	16	16	12
> 540 days (> 18 months)	53	48	41	49	35	42	44	40
Paternity: # of Cases	622	572	560	436	369	372	401	377
Age (days)								
Median (50 percentile)	103	99	102	107	85	90	74	94
95 percentile	302	328	345	288	277	312	269	277
# of Cases in Age Interval								
0 - 120 days (0 - 4 months)	355	338	317	239	240	246	281	225
121 - 240 days (5 - 8 months)	206	159	193	152	102	88	96	119
241 - 360 days (9 - 12 months)	48	57	30	32	22	28	13	22
361 - 540 days (13 - 18 months)	12	18	19	12	3	7	10	9
> 540 days (> 18 months)	1	0	1	1	2	3	1	2
Mental Illness: # of Cases	487	436	447	463	454	463	548	530
Age (days)								
Median (50 percentile)	380	535	590	665	757	836	770	894
95 percentile	1668	1785	1869	1957	2051	2138	2153	2246
# of Cases in Age Interval								
0 - 120 days (0 - 4 months)	106	74	82	63	76	62	124	100
121 - 240 days (5 - 8 months)	61	59	47	42	19	27	32	63
> 240 days (> 8 months)	320	303	318	358	359	374	392	367
Juvenile Dependency: # of Cases	542	459	453	446	442	503	518	522
Age (days)								
Median (50 percentile)	98	91	122	94	71	100	131	129
95 percentile	370	275	367	459	529	560	652	711
# of Cases in Age Interval								
0 - 60 days (0 - 2 months)	181	166	148	142	204	182	166	148
61 - 120 days (3 - 4 months)	129	121	78	112	96	22	79	91
121 - 180 days (5 - 6 months)	68	83	47	39	36	90	61	69
181 - 270 days (7 - 9 months)	82	57	100	38	41	45	97	36
> 270 days (> 9 months)	82	32	80	115	65	77	115	178
Juvenile ARY/CHINS: # of Cases	160	156	149	68	71	90	92	94
Age (days)								
Median (50 percentile)	176	127	214	454	401	136	217	222
95 percentile	1528	1582	1674	1782	1872	1947	2039	2131
# of Cases in Age Interval								
0 - 60 days (0 - 2 months)	58	40	30	18	26	29	19	26
61 - 120 days (3 - 4 months)	11	31	15	4	6	14	11	11
121 - 180 days (5 - 6 months)	13	26	19	0	2	6	15	8
181 - 270 days (7 - 9 months)	22	10	33	2	0	5	6	7
> 270 days (> 9 months)	56	49	52	44	37	36	41	42

* Reflecting all documents received by 01/15/2012.

Table 5 (cont.). Age of Pending Cases

King County Superior Court

Reporting Category	Age of Pending Cases and # of Cases in Each Age Interval							
	Q1/10	Q2/10	Q3/10	Q4/10	Q1/11	Q2/11	Q3/11	Q4/11*
Juvenile Truancy: # of Cases	692	475	219	313	398	329	129	165
Age (days)								
Median (50 percentile)	547	398	1977	561	110	561	137	46
95 percentile	2152	2290	2537	2587	2662	2768	298	381
# of Cases in Age Interval								
0 - 60 days (0 - 2 months)	168	58	13	115	180	79	16	96
61 - 120 days (3 - 4 months)	39	79	2	5	24	38	5	4
121 - 180 days (5 - 6 months)	9	41	11	1	7	17	64	1
181 - 270 days (7 - 9 months)	2	20	14	9	0	11	32	41
> 270 days (> 9 months)	474	277	179	183	187	184	12	23
Juvenile Offender: # of Cases	967	1055	1070	913	865	726	670	723
Age (days)								
Median (50 percentile)	51	55	68	88	63	73	78	66
95 percentile	379	442	535	628	613	629	735	657
# of Cases in Age Interval								
0 - 60 days (0 - 2 months)	517	555	500	343	429	315	289	344
61 - 120 days (3 - 4 months)	182	234	221	214	145	151	118	132
121 - 180 days (5 - 6 months)	84	70	117	111	55	70	62	59
181 - 270 days (7 - 9 months)	66	64	74	95	71	46	54	38
> 270 days (> 9 months)	118	132	158	150	165	144	147	150
Criminal RALJ: # of Cases	160	161	141	126	131	144	145	132
Age (days)								
Median (50 percentile)	172	153	151	128	140	139	136	162
95 percentile	429	479	508	373	351	311	368	334
# of Cases in Age Interval								
0 - 60 days (0 - 2 months)	30	34	23	29	34	38	30	21
61 - 120 days (3 - 4 months)	29	29	13	27	26	28	33	25
121 - 180 days (5 - 6 months)	27	26	24	27	25	32	29	28
181 - 270 days (7 - 9 months)	35	34	22	31	30	25	35	36
> 270 days (> 9 months)	39	38	18	12	16	21	18	22
Civil RALJ: # of Cases	48	45	39	31	31	33	30	34
Age (days)								
Median (50 percentile)	124	102	140	157	107	94	152	120
95 percentile	265	356	1107	1199	1289	1380	1472	1564
# of Cases in Age Interval								
0 - 60 days (0 - 2 months)	15	15	5	10	12	7	7	10
61 - 120 days (3 - 4 months)	8	14	11	2	8	12	3	7
121 - 180 days (5 - 6 months)	18	7	12	9	3	6	12	5
181 - 270 days (7 - 9 months)	5	5	4	3	1	2	1	2
> 270 days (> 9 months)	2	4	7	7	7	6	7	10

* Reflecting all documents received by 01/15/2012.

Table 6. Seattle vs. Regional Justice Center (KNT): Filing, Resolution, Pending Caseload (%)

King County Superior Court

	Q4/10		Q1/11		Q2/11		Q3/11		Q4/11	
	SEA	KNT	SEA	KNT	SEA	KNT	SEA	KNT	SEA	KNT
Filings Total <i>(excl. filings with clerk)</i>	64%	36%	64%	36%	64%	36%	65%	35%	64%	36%
Criminal (excl. RALJ)	61%	39%	56%	44%	55%	45%	56%	44%	54%	46%
General Civil (excl. RALJ)	57%	43%	58%	42%	57%	43%	59%	41%	58%	42%
Domestic	64%	36%	60%	40%	63%	37%	64%	36%	64%	36%
Probate	76%	24%	79%	21%	77%	23%	79%	21%	79%	21%
Guardianship	53%	47%	68%	32%	63%	37%	60%	40%	65%	35%
Adoption	76%	24%	74%	26%	75%	25%	81%	19%	73%	27%
Paternity	49%	51%	50%	50%	42%	58%	47%	53%	45%	55%
Mental Illness	100%	---	100%	---	100%	---	100%	---	100%	---
Juvenile Dependency	63%	37%	54%	46%	44%	56%	43%	57%	50%	50%
Juvenile ARY/CHINS	57%	43%	64%	36%	54%	46%	42%	58%	42%	58%
Juvenile Truancy	45%	55%	46%	54%	49%	51%	31%	69%	32%	68%
Juvenile Offender	100%	---	100%	---	100%	---	100%	---	100%	---
Criminal RALJ	91%	9%	93%	7%	95%	5%	92%	8%	88%	12%
Civil RALJ	100%	---	87%	13%	79%	21%	90%	10%	89%	11%
Resolution Total <i>(excl. filings with clerk)</i>	65%	35%	65%	35%	64%	36%	65%	35%	65%	35%
Criminal (excl. RALJ)	62%	38%	63%	37%	61%	39%	60%	40%	59%	41%
General Civil (excl. RALJ)	59%	41%	57%	43%	57%	43%	59%	41%	59%	41%
Domestic	62%	38%	64%	36%	62%	38%	62%	38%	65%	35%
Probate	77%	23%	79%	21%	78%	22%	79%	21%	78%	22%
Guardianship	56%	44%	56%	44%	69%	31%	60%	40%	61%	39%
Adoption	76%	24%	75%	25%	70%	30%	80%	20%	70%	30%
Paternity	41%	59%	55%	45%	48%	52%	50%	50%	45%	55%
Mental Illness	100%	---	100%	---	100%	---	100%	---	100%	---
Juvenile Dependency	63%	37%	66%	34%	37%	63%	39%	61%	47%	53%
Juvenile ARY/CHINS	67%	33%	57%	43%	52%	48%	38%	62%	55%	45%
Juvenile Truancy	28%	72%	47%	53%	37%	63%	60%	40%	56%	44%
Juvenile Offender	100%	---	100%	---	100%	---	100%	---	100%	---
Criminal RALJ	95%	5%	80%	20%	98%	2%	92%	8%	96%	4%
Civil RALJ	95%	5%	100%	---	100%	---	77%	23%	100%	---
Pending Total <i>(excl. filings with clerk)</i>	69%	30%	68%	32%	67%	33%	67%	33%	66%	34%
Criminal (excl. RALJ)	58%	42%	53%	47%	52%	48%	50%	50%	48%	52%
General Civil (excl. RALJ)	70%	30%	70%	30%	70%	30%	70%	30%	70%	30%
Domestic	61%	39%	60%	40%	60%	40%	61%	39%	60%	40%
Probate	87%	13%	88%	12%	85%	15%	85%	15%	85%	15%
Guardianship	56%	44%	66%	34%	61%	39%	61%	39%	64%	36%
Adoption	73%	27%	71%	29%	74%	26%	74%	26%	78%	22%
Paternity	55%	45%	52%	48%	47%	53%	46%	54%	45%	55%
Mental Illness	100%	---	100%	---	100%	---	100%	---	100%	---
Juvenile Dependency	75%	25%	65%	35%	60%	40%	58%	42%	56%	44%
Juvenile ARY/CHINS	87%	13%	85%	15%	76%	24%	72%	28%	64%	36%
Juvenile Truancy	68%	32%	66%	34%	76%	24%	63%	37%	49%	51%
Juvenile Offender	100%	---	100%	---	100%	---	100%	---	100%	---
Criminal RALJ	93%	7%	93%	7%	92%	8%	92%	8%	89%	11%
Civil RALJ	100%	---	94%	6%	85%	15%	90%	10%	88%	12%

Reflecting all documents received by 01/15/2012.

Table 7. Quarterly Utilization of Pro Tem Judges/Commissioners ⁽¹⁾

Category	Q2/09	Q3/09	Q4/09	Q1/10	Q2/10	Q3/10	Q4/10	Q1/11	Q2/11	Q3/11	Q4/11
Grand Total	1324	1246	1407	884	1466	1029	1337	932	1354	850	1157
<i>Paid hours</i>	1324	1246	1407	884	1466	1029	1337	932	1354	850	1157
<i>Donated hours</i>	---	---	---	---	---	---	---	---	---	---	---
Judge FTE Equivalent ⁽³⁾	2.9	2.8	3.1	2.0	3.3	2.3	3.0	2.1	3.0	1.9	2.6
By Work Type											
On Trial/Hearings	1154	1077	1133	757	1282	859	1103	773	1110	552	856
On Preparation	170	169	274	127	184	168	235	159	200	151	250
Other or Unspecified Activity	0	0	0	0	0	2	0	0	43	147	51
By Case Type											
Criminal	28	1	43	6	20	0	62	43	23	0	14
Civil	693	807	767	397	570	541	692	590	654	487	501
Domestic	215	264	238	97	331	162	297	129	414	220	409
Probate	0	0	0	0	0	0	0	0	0	0	0
Guardianship	0	0	0	0	0	0	0	0	0	0	0
Adoption	0	0	0	0	0	0	0	0	0	0	0
Paternity	0	0	0	0	0	0	0	0	0	0	0
Mental Illness	0	0	0	0	0	0	0	0	0	0	0
Juvenile Dependency	135	48	90	78	59	69	47	34	34	79	178
Juvenile Truancy	40	20	24	108	87	43	30	54	84	24	0
Juvenile Offender	213	107	246	199	204	214	211	83	139	39	54
Other or Unspecified	0	0	0	0	195	0	0	0	7	0	0
By Calendar Type											
Criminal Plea	0	0	0	0	0	0	0	35	19	0	14
Criminal Trial	0	1	0	0	0	0	0	52	0	0	0
Civil Trial	103	190	113	28	29	30	66	0	22	83	20
Individual Calendar	0	0	0	0	0	0	0	0	0	0	0
Family Law	323	310	543	173	392	290	429	279	426	227	405
Ex Parte	275	323	163	186	292	273	316	234	343	312	206
Mental Illness	90	131	64	51	55	51	81	66	145	45	262
Juvenile Dependency	222	89	117	104	158	118	109	89	147	95	192
Juvenile CHINS/ARY	0	0	0	0	0	0	0	0	0	0	0
Juvenile Truancy	40	20	24	108	87	43	30	54	80	30	0
Juvenile Offender	213	107	246	199	204	214	211	83	139	39	44
Other or Unspecified	59	76	139	37	249	9	96	41	33	21	0
By Reason											
Congestion	174	287	283	67	612	222	303	227	164	159	306
Medical Coverage	102	195	240	180	134	132	215	255	91	114	134
Vacation	556	649	599	425	529	547	623	319	672	314	603
Training	425	95	213	135	424	129	196	131	155	227	85
Judicial Conference	0	0	0	0	12	0	0	0	272	0	0
Others	68	20	73	78	0	0	0	0	0	36	27

(1) This table is based on the time sheet for compensation

(2) Judge FTE Equivalent = # of hours / [7.5 hours/day * 20 days/month * 3 months] = # of hours/450.

The statistics on Pro Tem judge/commissioner use provide information on the external help the court has obtained in order to handle the workload. The data are collected on the time sheet for compensation (therefore it does not include unpaid volunteering or visiting judges/commissioners). The database on Pro Tem judges/commissioners is managed by the Administrative Services Department (ASD) of King County Superior Court. The Pro Tem total hours presented in this section are provided quarterly by ASD.

Table 8. Family Law Activity

	2ND QTR, 2010		3RD QTR, 2010		4TH QTR, 2010		1ST QTR, 2011		2ND QTR, 2011		3RD QTR, 2011		4TH QTR, 2011	
	HRGS	ORDS	HRGS	ORDS	HRGS	ORDS	HRGS	ORDS	HRGS	ORDS	HRGS	ORDS	HRGS	ORDS
SEATTLE														
FAM.LAW	1057	2332	911	2366	938	2091	958	2169	869	2152	769	2220	765	2096
DAILY AVG.	17	38	15	39	15	34	16	36	14	35	13	36	13	34
PATERNITY	828	2198	691	1978	775	2036	831	1944	669	1763	465	1900	476	1602
DAILY AVG.	14	36	11	32	13	33	14	32	11	29	8	31	8	26
DOM. VIOL.	435	549	483	589	474	543	474	571	448	529	354	497	303	477
DAILY AVG.	7	9	8	10	8	9	8	9	7	9	6	8	5	8
KENT														
FAM.LAW	688	1772	646	1903	552	1568	562	1734	535	1745	519	1913	620	1759
DAILY AVG.	11	29	11	31	9	26	9	28	9	29	9	31	10	29
PATERNITY	497	1497	480	1583	443	1427	414	1340	361	1336	321	1281	380	1247
DAILY AVG.	8	25	8	26	7	23	7	22	6	22	5	21	6	20
DOM. VIOL.	467	515	402	496	393	477	408	519	360	491	373	571	381	512
DAILY AVG.	8	8	7	8	6	8	7	9	6	8	6	9	6	8
GRAND TOTAL	3972	8863	3613	8915	3575	8142	3647	8277	3242	8016	2801	8382	2925	7693
OVERALL DAILY AVG.	65	145	59	146	59	133	60	136	53	131	46	137	48	126

The statistics on family law and Ex Parte activity are obtained directly from SCOMIS using the appropriate docket codes.

Table 9. Ex Parte Activity

SEATTLE	4TH QTR, 2010		1ST QTR, 2011		2ND QTR, 2011		3RD QTR, 2011		4TH QTR, 2011	
	HRGS	ORDS	HRGS	ORDS	HRGS	ORDS	HRGS	ORDS	HRGS	ORDS
ADOP/PAT	154	413	91	301	120	337	169	328	191	532
DOM. VIOL.	3	377	7	335	9	341	38	330	29	301
OTH. CIVIL	356	755	419	843	361	795	429	552	360	562
DOMESTIC	914	2416	891	2392	832	2470	1019	2227	889	2507
PROB/GDN	1284	2564	1407	2635	1293	2582	1298	2248	1114	2205
SUBTOTAL	2711	6525	2815	6506	2615	6525	2953	5685	2583	6107
DAILY AVG.	44	107	46	107	43	107	48	93	42	100

SEATTLE VIA CLERK (starting Jan 2009)	4TH QTR, 2010		1ST QTR, 2011		2ND QTR, 2011		3RD QTR, 2011		4TH QTR, 2011	
	----	ORDS	----	ORDS	----	ORDS	----	ORDS	----	ORDS
ADOP/PAT	----	154	----	137	----	174	----	161	----	216
DOM. VIOL.	----	5	----	5	----	2	----	3	----	3
OTH. CIVIL	----	5699	----	5990	----	8377	----	8644	----	8168
DOMESTIC	----	1081	----	884	----	1172	----	1299	----	1232
PROB/GDN	----	610	----	684	----	666	----	714	----	690
SUBTOTAL	----	7549	----	7700	----	10391	----	10821	----	10309
DAILY AVG.	----	124	----	126	----	170	----	177	----	169

SEATTLE MAIL-IN	4TH QTR, 2010		1ST QTR, 2011		2ND QTR, 2011		3RD QTR, 2011		4TH QTR, 2011	
	----	ORDS	----	ORDS	----	ORDS	----	ORDS	----	ORDS
ADOP/PAT	----	4	----	3	----	2	----	4	----	2
DOM. VIOL.	----	0	----	0	----	0	----	0	----	0
OTH. CIVIL	----	217	----	243	----	218	----	189	----	153
DOMESTIC	----	46	----	50	----	42	----	47	----	55
PROB/GDN	----	95	----	94	----	116	----	68	----	63
SUBTOTAL	----	362	----	390	----	378	----	308	----	273
DAILY AVG.	----	6	----	6	----	6	----	5	----	4

Note: Ex Parte via Clerk started in January 2009.

Table 9 (cont). Ex Parte Activity

KENT	4TH QTR, 2010		1ST QTR, 2011		2ND QTR, 2011		3RD QTR, 2011		4TH QTR, 2011	
	HRGS	ORDS	HRGS	ORDS	HRGS	ORDS	HRGS	ORDS	HRGS	ORDS
ADOP/PAT	50	174	40	136	46	141	38	124	84	221
DOM. VIOL.	1	403	2	437	1	378	3	486	3	382
OTH. CIVIL	297	932	328	901	314	1091	291	628	311	520
DOMESTIC	398	1327	441	1478	482	1683	481	1596	437	1548
PROB/GDN	438	867	418	951	425	873	427	874	435	855
SUBTOTAL	1184	3703	1229	3903	1268	4166	1240	3708	1270	3526
DAILY AVG.	19	61	20	64	21	68	20	61	21	58

KENT VIA CLERK (starting Jan 2009)	4TH QTR, 2010		1ST QTR, 2011		2ND QTR, 2011		3RD QTR, 2011		4TH QTR, 2011	
	----	ORDS	----	ORDS	----	ORDS	----	ORDS	----	ORDS
ADOP/PAT	----	70	----	74	----	39	----	40	----	37
DOM. VIOL.	----	2	----	1	----	0	----	2	----	3
OTH. CIVIL	----	3204	----	3566	----	1654	----	1242	----	1104
DOMESTIC	----	472	----	446	----	350	----	336	----	363
PROB/GDN	----	245	----	269	----	252	----	234	----	242
SUBTOTAL	----	3993	----	4356	----	2295	----	1854	----	1749
DAILY AVG.	----	65	----	71	----	38	----	30	----	29

KENT MAIL-IN	4TH QTR, 2010		1ST QTR, 2011		2ND QTR, 2011		3RD QTR, 2011		4TH QTR, 2011	
	----	ORDS	----	ORDS	----	ORDS	----	ORDS	----	ORDS
ADOP/PAT	----	2	----	2	----	1	----	2	----	1
DOM. VIOL.	----	0	----	0	----	0	----	0	----	1
OTH. CIVIL	----	57	----	62	----	60	----	63	----	32
DOMESTIC	----	22	----	23	----	28	----	16	----	18
PROB/GDN	----	31	----	48	----	26	----	29	----	33
SUBTOTAL	----	112	----	135	----	115	----	110	----	85
DAILY AVG.	----	2	----	2	----	2	----	2	----	1

ALL SEATTLE KENT and EASTSIDE	4TH QTR, 2010		1ST QTR, 2011		2ND QTR, 2011		3RD QTR, 2011		4TH QTR, 2011	
	HRGS	ORDS	HRGS	ORDS	HRGS	ORDS	HRGS	ORDS	HRGS	ORDS
GRAND TOTAL	3895	22245	4044	22991	3883	23871	4193	22487	3853	22050
DAILY AVERAGE	63.9	364.7	66.3	376.9	63.7	391.3	68.7	368.6	63.2	361.5

Note: Ex Parte via Clerk started in January 2009.

Appendix Glossary and Definition

General Definition

Active Status

A case is active if it is not on suspense status (see Suspense Status).

Case

A case is defined as a filing with an assigned case number (or a case number plus a defendant connection code in pre-1990 criminal filings).

Completion

A case is completed when dispositive document is filed with the court following resolution.

Jury Trial

A hearing is reported as a jury trial if the jury is impaneled.

New Case

A new case is an original filing with new case number assigned.

Non-Jury Trial

A hearing is reported as a non-jury trial if an opening statement is made, waived, or reserved. A juvenile fact finding hearings is reported as a non-jury trial.

Pending Case

A case is defined as pending if it is unresolved and active (not in suspense).

Reactivated Case

A case returns to active status from suspense status during the reporting period.

Re-opened Cases

A case is re-opened if it has been previously completed but returns to the court for supplement or change of the original case resolution. A re-opened case does not have a new case number. Only resolved cases can be "re-opened". (Note: measurement not available as of July 1996. SCOMIS capacity may exist after conversion to DB2 in the future).

Resolution

A case is resolved if all issues in the complaint are fully adjudicated.

Suspended Case

A case is placed in suspense status from active status during the reporting period.

Suspense Status

A case is on suspense status if it is on warrant, appeal, stay, mediation, arbitration ("Deferred Prosecution" is not a suspense status, but is treated as a resolution).

Trial

A hearing set before a judge or jury in which all the issues in the case are meant to be resolved. A trial normally includes opening statements to the court or jury stating what the evidence will show, introduction of witnesses and exhibits for direct and cross examination, final arguments to the court or jury in which counsel argue both the evidence and the law, and judgment by the court or jury stating what the facts of the case are and what law applies to the facts. In a jury case, it also includes the selection of the jury. A trial can be held

for one or more cases. A single trial may be held to adjudicate more than one case (as defined above).

Post-resolution Modifications

In this report, we also report the post-resolution modifications for case type 3 (domestic) and 5 (paternity). These numbers are based on the tracks (DMOD and DTBA) opened after the original resolution date (i.e., if the track beginning date is after the resolution date).

Section I. Filing Activity

Additional Filings with Clerk

Filings with clerk without assigning a SCOMIS case number. This reporting category consists of search warrants, wire taps, extradition, oaths and orders pertaining to Pro Tem judge/commissioners/Court

Reporters/Bailiffs, and other "non-case" filings as recorded under 12050 system.

Annual Filings

Total number of new case filings during the calendar year (January 1 to December 31).

Adoption Cases

This reporting category includes the following "cause-of-action" codes within SCOMIS case type 5:

- Relinquishment (REL)
- Termination of Parent/Child Relationship (TER)
- Adoption (ADP)
- Miscellaneous (MSC)
- Name Change - Confidential (CHN)
- Initial Pre-Placement Report Filed with Clerk (PPR)

General Civil Cases

"General Civil" cases include all civil matters other than Domestic, Probate, Guardianship, Adoption, and appeals from courts of limited jurisdiction and "Matters Filed with Clerk". "General civil" cases include small claims as identified by the "Small Claim Track". This reporting category includes the following "cause-of-action" codes within SCOMIS case type 2:

- Administrative Law Review (ALR)
- Change of Name - Non-Confidential (CHN)
- Collection (COL)
- Commercial (COM)
- Condemnation (CON)
- Domestic Violence Protection (DVP)
- Emancipation of Minor (EOM)
- Foreclosure (FOR)
- Civil Harassment (HAR)
- Injunction (INJ)
- Other Malpractice (MAL)
- Medical Malpractice (MED)
- Meretricious Relationship (MER)
- Malicious Harassment (MHA)
- Miscellaneous (MSC)
- Minor Settlement (MST) - as of 10/1/96, under Guardianship
- Petition of Civil Commitment- Sexual Predator (PCC)
- Property Fairness (PFA)

- Personal Injury (PIN)
- Property Damage (PRP)
- Quiet Title (QT)
- Small Claims (LCA/LCI on “Small Claim Track”)
- Seizure of Property from the Commission of a Crime (SPC)
- Seizure of Property Resulting from a Crime (SPR)
- Tort Motor Vehicle (TMV)
- Tort Other (TTO)
- Unlawful Detainer (UND)
- Wrongful Death (WDE)
- Writ of Habeas Corpus (WHC)
- Miscellaneous Writ (WMW)
- Writ of Mandamus (WRM)
- Writ of Restitution (WRR)
- Writ of Review (WRV)

Civil RALJ Cases

Civil appeals from courts of limited jurisdiction (excluding small claims as identified by the “Small Claim Track”). Civil RALJ includes the following “cause-of-action” reporting categories:

- Lower Court Appeal - Civil and “Not a Small Claim”
- Lower Court Appeal - Infraction and “Not a Small Claim”

Note: The Civil RALJ cases are determined based on both SCOMIS “cause-of-action” code (LCA and LCI) within SCOMIS case type 2 and the “Small Claim Track”.

Criminal Cases (excl. RALJ)

Adult criminal cases, excluding appeals from courts of limited jurisdiction. This reporting category includes the following crime categories within SCOMIS case type 1:

- Homicide
- Sex Crime
- Robbery
- Assault
- Theft/Burglary
- Motor Vehicle Theft
- Controlled Substance
- Other Felony
- Others (Misdemeanor, Non-charge Case)

Criminal RALJ Cases

Criminal appeals from courts of limited jurisdiction. This reporting category includes all SCOMIS case type 1 cases that have an appeal from lower court field of “Yes”.

Domestic Cases

This reporting category includes the following “cause-of-action” codes within SCOMIS case type 3:

- Annulment – Invalidity (INV)
- Child Custody (CUS)
- Dissolution With Children Of The Marriage (DIC)
- Dissolution With No Children Of The Marriage (DIN)
- Dissolution of Domestic Partnership – With Children (DPC)
- Dissolution of Domestic Partnership – With No Children (DPN)
- Foreign Judgment (FJU)
- Invalidity – Domestic Partnership (INP)
- Mandatory Wage Assignment (MWA)
- Miscellaneous (MSC)
- Modification (MOD)
- Modification – Support Only (MDS)
- Out-Of-State Child Custody (OSC)
- Parenting Plan / Child Support (PPS)
- Reciprocal, Respondent In-County (RIC)
- Reciprocal, Respondent Out-of-County (ROC)
- Legal Separation (SEP)
- Legal Separation – Domestic Partnership (SPD)

Guardianship Cases

This reporting category includes the following “cause-of-action” codes within SCOMIS case type 4:

- Guardianship/Estate (G/E)
- Guardianship (GND)

- Limited Guardianship (LGD)
- Minor Settlement (MST)

Juvenile ARY/CHINS Cases

Juvenile dependency cases, excluding truancy cases and DEP cause code. This reporting category includes following “cause-of-action” codes within SCOMIS case type 7:

- Alternative Residential Placement (ARP)
- At-Risk Youth (ARY)
- Child in Need of Service (CNS)
- Termination (TER)

Juvenile Dependency Cases

This reporting category includes following “cause-of-action” codes within SCOMIS case type 7:

- Dependency (DEP)

Juvenile Offender Cases

This reporting category includes the following crime categories in SCOMIS case type 8:

- Homicide
- Sex Crime
- Robbery
- Assault
- Theft/Burglary
- Motor Vehicle Theft
- Controlled Substance
- Other Felony
- Others (Misdemeanor, Non-charge Case)

Juvenile Truancy Cases

Mandatory truancy filings started on 10/01/1995. This reporting category includes the following “cause-of-action” code within SCOMIS case type 7:

- Truancy (TRU)

Matters Filed with Clerk

Filings with clerk (case numbers assigned), but requiring little or no judicial action. This reporting category includes the following “cause-of-action” codes within SCOMIS case type 2:

- Abstract of Judgment (ABJ)
- Foreign Judgment (FJU)
- Tax Warrant (TAX)
- Transcripts of Judgment (TRJ)

Mental Illness Cases

This reporting category includes all “cause-of-action” codes within SCOMIS case type 6:

- Alcoholic Treatment (ALT)
- Mental Illness - Adult (MI)
- Mental Illness - Juvenile (MIJ)

Paternity Cases

This reporting category includes the following “cause-of-action” codes within SCOMIS case type 5:

- Modification (MOD)
- Paternity (PAT)
- Paternity/URESA/UIFSA (PUR)

Probate Cases

This reporting category includes the following “cause-of-action” codes within SCOMIS case type 4:

- Absentee (ABS)
- Disclaimer (DSC)
- Estate (EST)
- Foreign Will (FNW)
- Miscellaneous (MSC)
- Non-Probate Notice to Creditors (NNC)
- Will Only (WLL)

Total Cases

New cases with case numbers assigned, excluding “Matters Filed with Clerk” and “Additional Filings with Clerk”.

Year-to-Date Filings

Total number of new filings since the beginning of calendar year (January 1) to the end of reporting period.

Section II. Resolution Category

Adoption - Resolved by Trial

Court Decision after Non-Jury Trial (CDAT)

Adoption - Uncontested

Consolidated Case (CONS)
Uncontested Resolution (UNDS)

Adoption - Settlement/Dismissal

Closed by Court Order after a Hearing (CLCO)
Dismissal without Trial (DSM)
Dismissal after Non-Jury Trial Commencement (DAT)
Settled after Non-Jury Trial Commencement (SAT)
Settled by Parties/Agreed Judgment (STPR)

Adoption - Closure by Clerk

Dismissal/Closure by Clerk (DSCK)

Adoption - Others

Change of Venue/Jurisdiction (CHV)
Other Non-specified Resolutions

Civil - Resolved by Jury Trial

Jury Verdict after Trial (JVAT)

Civil - Resolved by Non-Jury Trial

Court Decision after Non-Jury Trial (CDAT)

Civil - Summary Judgment

Summary Judgment (SMJG)

Civil - Default/Uncontested

Consolidated Case (CONS)
Default Judgment (DFJG)
Uncontested Resolution (UNDS)

Civil - Arbitration

Settle by Arbitration (ARBA)

Civil - Settlement/Dismissal

Closed by Court Order after a Hearing (CLCO)
Dismissal after Non-Jury Trial (DAT)
Dismissal after Jury Trial (DJT)
Dismissal (DSM)
Settled after Non-Jury Trial Commencement (SAT)
Settled after Jury Trial Commencement (SJT)
Settled by Parties/Agreed Judgment (STPR)

Civil - Closure by Clerk

Dismissal/Closure by Clerk (DSCK)

Civil - Others

Transferred to Federal bankruptcy Court (BANK)
Change of Venue/Jurisdiction (CHV)
Other Non-specified Resolutions

Civil RALJ - RALJ Decision

Court Decision to Affirm Appeal/review (CDTA)
Court Decision to Modify Appeal/Review (CDTM)
Court Decision to Reverse Appeal/review (CDTR)

Civil RALJ - Dismissal

Dismissal and Remand of Appeal/Review (DSRM)

Civil RALJ - Others

Other Non-specified Resolutions

Comparison with Court Standard

Percentage of cases actually falling within the Court’s standard benchmark.

Court Standard

Benchmarks set by a state advisory committee and adopted by the court indicating percentage of cases to be resolved at certain age (in months, 1 month = 30 days as used in the Advisory Case Processing Time Standard as published in the Court Rule).

Court standard is based on timelines as suggested by State Advisory Committee. For a case type with no time standard, the standard for a similar case type is adopted if appropriate.

Criminal: 90% by 4 months, 98% by 6 months, 100% by 9 months.

Civil: 90% by 12 months, 98% by 18 months, 100% by 24 months.

Domestic: 90% by 8 months, 98% by 10 months, 100% by 14 months.

Probate/Guardianship: 90% by 8 months, 98% by 18 months, 100% by 36 months.

Adoption/Paternity: 90% by 8 months, 98% by 10 months, 100% by 14 months.

Mental Illness/Juvenile Truancy: No standard yet.

Juvenile Dependency: 90% by 8 months, 98% by 10 months, 100% by 14 months.

Juvenile Offender: 90% by 4 months, 98% by 6 months, 100% by 9 months.

Criminal RALJ/Civil RALJ: 90% by 4 months, 98% by 5 months, 100% by 6 months.

Criminal - Resolved by Jury Trial

Acquittal by Jury (AQJV)
Convicted - Jury Verdict after Trial (CVJV)

Criminal - Resolved by Non-Jury Trial

Acquittal by Court (AQCT)
Convicted - Court Decision after Non-Jury Trial (CVCT)

Criminal - Resolved by Guilty Plea

Guilty Plea (GP)
Guilty Plea after Non-Jury Trial Commencement (GPAT)
Guilty Plea after Jury Trial Commencement (GPJT)

Criminal - Dismissal

Dismissal after Non-Jury Trial Commencement (DAT)
Dismissal after Jury Trial Commencement (DJT)
Dismissal (DSM)

Criminal - Others

Change of Venue (CHV)
Consolidated Case (CONS)
Continued Order of Prosecution with Completion (CTOP)*
Deferred Prosecution (DFPD)
Dismissal/Closure by Clerk (DSCK)
Governor’s warrant (GW)
Not Guilty by Reason of Insanity (NGRI)
Uncontested Resolution (UNDS)
Waiver of Extradition (WE)
Other Non-specified Resolutions

* Note: For adult criminal cases, “CTOP” does not necessarily constitute resolution. An adult criminal case with a “CTOP” as resolution code is counted as a resolved case only if a completion code exists along with the “CTOP”. If the resolution code is CTOP and there is no completion code, then the case is treated as unresolved. The primary reason for combining “CTOP” with a completion code is to determine

resolution for drug court cases (CTOP is entered in the SCOMIS resolution field as soon as a defendant enrolls in Drug Court). This rule on "CTOP" applies to adult criminal cases only.

Criminal RALJ - RALJ Decision

Court Decision to Affirm Appeal/review (CDTA)
Court Decision to Modify Appeal/Review (CDTM)
Court Decision to Reverse Appeal/review (CDTR)

Criminal RALJ - Dismissal

Dismissal and Remand of Appeal/Review (DSRM)

Criminal RALJ - Others

Other Non-specified Resolutions

Domestic - Resolved by Trial

Court Decision after Non-Jury Trial (CDAT)

Domestic - Default/Uncontested

Consolidated Case (CONS)
Default Judgment (DFJG)
Uncontested Resolution (UNDS)

Domestic - Settlement/Dismissal

Settled by Arbitration (ARBA)
Closed by Court Order after a Hearing (CLCO)
Dismissal after Non-Jury Trial Commencement (DAT)
Dismissal (DSM)
Settled after Non-Jury Trial Commencement (SAT)
Settled by Parties/Agreed Judgment (STPR)

Domestic - Closure by Clerk

Dismissal/Closure by Clerk (DSCK)

Domestic - Others

Change of Venue/Jurisdiction (CHV)
Summary Judgment (SMJG)
Other Non-specified Resolutions

Guardianship - Guardian Appointed

Guardian Appointed (PRGA)

Guardianship - Dismissal

Closed by Court Order after a Hearing (CLCO)
Dismissal (DSM)

Guardianship - Closure by Clerk

Dismissal/Closure by Clerk (DSCK)

Guardianship - Others

Change of Venue/Jurisdiction (CHV)
Consolidated Case (CONS)
Uncontested Resolution (UNDS)
Other Non-specified Resolutions

Juvenile Dependency - Finding of Dependency

Approved Petition (APP)

Juvenile Dependency - Dismissal

Dismissal (DSM)

Juvenile Dependency - Others

Change of Venue/Jurisdiction (CHV)
Consolidated Case (CONS)
Transfer of Jurisdiction (TRJU)
Other Non-specified Resolutions

Juvenile Offender - Resolved by Trial

Acquittal by Court (AQCT)
Convicted - Court Decision after Adjudictory Hearing (CVCT)

Juvenile Offender - Resolved by Guilty Plea

Guilty Plea before Adjudictory Hearing Commencement (GP)
Guilty Plea after Adjudictory Hearing Commencement (GPAT)

Juvenile Offender - Dismissal

Dismissal after Adjudictory Hearing Commencement (DAT)
Dismissal (DSM)

Juvenile Offender - Others

Change of venue (CHV)
Dismissal/Closure by Clerk (DSCK)
Consolidated Case (CONS)

Continued Prosecution (CTOP)
Decline of Jurisdiction (DECL)
Uncontested Resolution (UNDS)
Other Non-specified Resolutions

Juvenile Truancy - Finding of Truancy

Approved Petition (APP)

Juvenile Truancy - Dismissal

Dismissal (DSM)

Juvenile Truancy - Others

Change of Venue (CHV)
Consolidated Case (CONS)
Transfer of Jurisdiction (TRJU)
Other Non-specified Resolutions

Mental Illness - Court Decision to Commit

Court Decision to Commit (CDTC)

Mental Illness - Closed by Court

Closed by Court (CLCO)

Mental Illness - Dismissal

Dismissal (DSM)

Mental Illness - Others

Change of Venue/Jurisdiction (CHV)
Uncontested Resolution (UNDS)
Other Non-specified Resolutions

Paternity - Resolved by Trial

Court Decision after Non-Jury Trial (CDAT)

Paternity - Summary Judgment

Summary Judgment (SMJG)

Paternity - Default/Uncontested

Consolidated Case (CONS)
Default Judgment (DFJG)
Uncontested Resolution (UNDS)

Paternity - Settlement/Dismissal

Settled by Arbitration (ARBA)
Closed by Court Order after a Hearing (CLCO)
Dismissal after Non-Jury Trial Commencement (DAT)
Dismissal (DSM)
Settled after Non-Jury Trial Commencement (SAT)
Settled by Partied/Agreed Judgment (STPR)

Paternity - Closure by Clerk

Dismissal/Closure by Clerk (DSCK)

Paternity - Others

Change of Venue (CHV)
Other Non-specified Resolutions

Percentile

Percent of cases resolved at a given age. For example, if resolved cases had a 98 percentile of 12 months, it means that 98% of the cases were resolved within the age of 12 months, or conversely 2% of the cases were resolved after 12 months, not counting suspense time.

Probate - Personal Representative Appointed

Non-Intervention Probate (NIP)
Personal Representative Appointed (PRGA)

Probate - Dismissal

Closed by Court Order after a Hearing (CLCO)
Dismissal (DSM)

Probate - Closure by Clerk

Dismissal/Closure by Clerk (DSCK)

Probate - Others

Change of Venue (CHV)
Consolidated Case (CONS)
Uncontested Resolution (UNDS)
Other Non-specified Resolutions

Backlogged Cases

Active pending cases with an age exceeding the court-adopted time standard for each specific case type (recommended by the State Advisory Committee, see definition for *Court Standard*).

Section III. Pending Caseload

Adjustment

Adjustment made because of vacating of resolutions, or change in suspense status between two reporting period.

End Pending

Total number of pending cases at the end of reporting period.

Previous Pending

Total number of pending cases at the beginning of reporting period.

Resolution Rate

Resolution rate is defined as the ratio of number of resolutions to number of new filings (i.e., number of resolutions divided by number of new filings) during the reporting period. The resolution rate measures the relative pace of resolution in relation to the pace of new filings. A resolution rate of greater than 1 indicates the number of resolutions exceeds the number of new filings.

On-review Status

Cases that have been resolved (post-resolution) but still need court resources for periodic review and other remaining outstanding issues.

Probate (EST), Paternity (PAT) and Dependency (DEP): Resolved and not completed (paternity or dependency established, but outstanding issues remain).

Guardianship (GDN,LGD,G/E): Resolved and on tracks of G1,G2,G3,GE or GD; Minor Settlement (MST): Resolved with a future hearing date.

Section IV. Age of Pending Cases

Case Age

The age of a case is the time (number of days) since the filing date, less any suspense time if applicable.

Median Age

The median age is the time that 50% of the cases are under and 50% are above the given age. For example, if pending cases have a median age of 12 months, it means that 50% of the pending cases are within the age of 12 months, and 50% of pending cases are over 12 months. The median age is more robust to cases with extreme age values than the average age.

Suspense Time

Time (days) that a case is on suspense status before its resolution. If a case has more than one suspense between filing and resolution, the suspense time is the total from all suspenses. Time on suspense status after resolution (e.g., appeals) is not counted.