

King County Superior Court
Quarterly Statistical Report

Third Quarter 2010

Department of Judicial Administration
Prepared by: Shiquan Liao, Ph.D., Statistician

Release Date: October 20, 2010

Report #: QTR-2010-3

Table 1. Year-to-Date Filing Activity

King County Superior Court

Reporting Category	Year-to-Date (Jan 1 to Sep 30) and Annual Filing Activity ⁽¹⁾					2009-2010 change (+ means "increase")		% of 2010 Total Filing ⁽²⁾
	2006	2007	2008	2009	2010	Cases	Percentage	
Total (incl. RALJ)								
Year-to-Date Filing	47375	48111	47160	47073	45413	-1660	-3.5%	
Annual Filing	62134	63057	62018	62148				
Criminal (excl. RALJ)								
Year-to-Date Filing	7865	8226	6951	4967	4984	+17	+0.3%	11.0%
Annual Filing	10648	10767	8667	6498				
General Civil (excl. Asbestos)								
Year-to-Date Filing	19488	19740	20686	22617	20864	-1753	-7.8%	0.0%
Annual Filing	25377	25893	27509	29789				
Asbestos Cases (civil)⁽³⁾								
Year-to-Date Filing	88	111	41	25	22	-3	-12.0%	45.9%
Annual Filing	92	127	68	32				
Domestic								
Year-to-Date Filing	5940	5952	5639	5814	6112	+298	+5.1%	13.5%
Annual Filing	7750	7720	7254	7673				
Probate								
Year-to-Date Filing	3935	4124	4254	3870	3935	+65	+1.7%	8.7%
Annual Filing	5136	5363	5373	5110				
Guardianship								
Year-to-Date Filing	655	656	648	664	684	+20	+3.0%	1.5%
Annual Filing	875	885	901	841				
Adoption								
Year-to-Date Filing	571	540	570	509	522	+13	+2.6%	1.1%
Annual Filing	751	717	772	685				
Paternity								
Year-to-Date Filing	975	1160	863	924	954	+30	+3.2%	2.1%
Annual Filing	1199	1421	1147	1233				
Mental Illness								
Year-to-Date Filing	1642	1774	1823	2011	2304	+293	+14.6%	5.1%
Annual Filing	2226	2397	2420	2727				
Juvenile Dependency								
Year-to-Date Filing	702	754	649	679	780	+101	+14.9%	1.7%
Annual Filing	945	971	888	903				
Juvenile ARY/CHINS								
Year-to-Date Filing	324	301	336	248	281	+33	+13.3%	0.6%
Annual Filing	413	411	417	341				
Juvenile Truancy								
Year-to-Date Filing	1708	1502	1562	1545	1083	-462	-29.9%	2.4%
Annual Filing	2204	2111	2512	2083				
Juvenile Offender								
Year-to-Date Filing	3222	3028	2903	3010	2708	-302	-10.0%	6.0%
Annual Filing	4178	3954	3803	3967				
Criminal RALJ								
Year-to-Date Filing	193	176	174	133	129	-4	-3.0%	0.3%
Annual Filing	247	225	214	180				
Civil RALJ								
Year-to-Date Filing	67	67	61	57	51	-6	-10.5%	0.1%
Annual Filing	93	95	73	86				
Matters Filed with Clerk⁽⁴⁾								
Year-to-Date Filing	9289	9605	10550	10908	11533	+645	+5.9%	
Annual Filing	12536	12784	13881	14662				

(1) New filings only (based on filing date), excluding re-opened cases (unable to count), and reflecting all documents received by 10/15/2010.

(2) New filings of each reporting category as percentage of "Year-to-Date Filing".

(3) "Matters Filed with Clerk" and "Additional Filings with Clerk" are not included in the "Total".

Chart 1-A. Quarterly Filing Activity
Total Judicial Cases Only ("Matters Filed with Clerk" excluded)

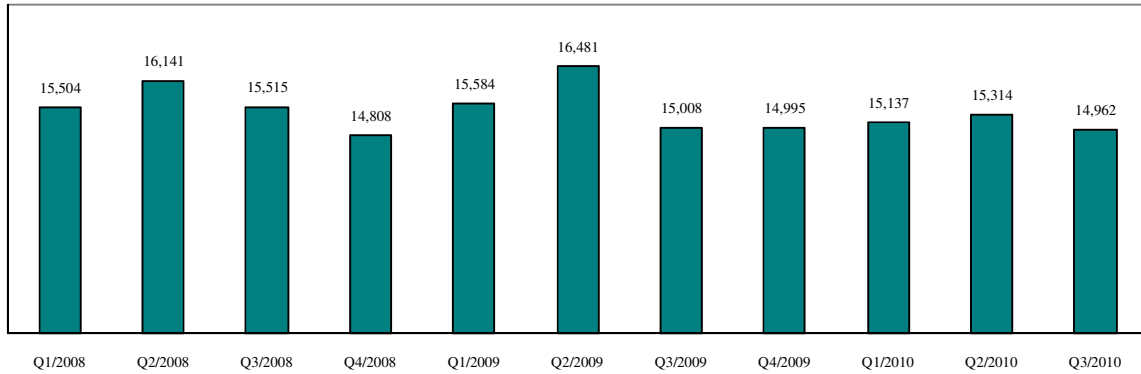
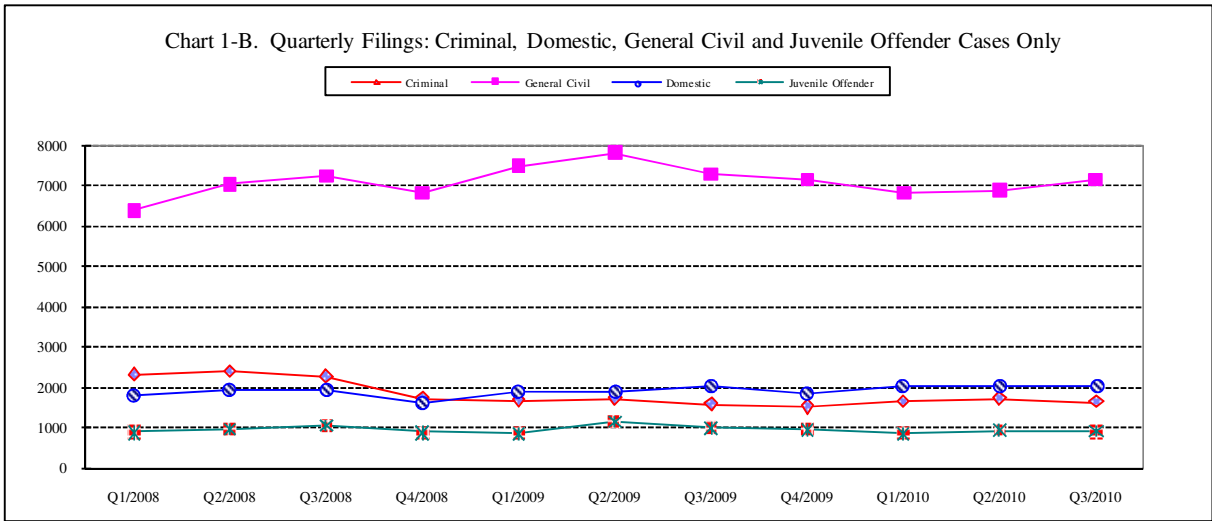


Chart 1-B. Quarterly Filings: Criminal, Domestic, General Civil and Juvenile Offender Cases Only



* Note: "General Civil" is specifically defined in this report. The category of "General Civil" does **not** include the following case types: domestic, probate, guardianship, adoption, paternity, mental illness, juvenile cases (dependency, at-risk youth, child-in-need of service, civil RALJ, and tax filings that don't require judicial resources ("matters filed with clerk")). Please check the Appendix for the cause codes in the "General Civil" category.

Table 1-A. Post-Resolution Modifications (Domestic and Paternity Cases)

Based on Tracks Opened After Original Resolution Date

		2008Q1			2008Q2			2008Q3			2008Q4			Year 2008		
Location	Case Type	DMOD	DTBA	Total	DMOD	DTBA	Total	DMOD	DTBA	Total	DMOD	DTBA	Total	DMOD	DTBA	Total
KNT	Domestic	113	59	172	119	69	188	122	49	171	118	69	187	472	246	718
	Paternity	18	18	36	19	16	35	25	15	40	23	19	42	85	68	153
KNT Total		131	77	208	138	85	223	147	64	211	211	88	229	317	314	871
SEA	Domestic	103	65	168	108	95	203	129	74	203	90	72	162	430	306	736
	Paternity	17	17	34	17	23	40	22	16	38	14	17	31	70	73	143
SEA Total		120	82	202	125	118	243	151	90	241	104	89	193	500	379	879
KNT/SEA Total		251	159	410	119	69	188	298	154	452	315	177	492	1127	693	1820
		2009Q1			2009Q2			2009Q3			2009Q4			Year 2009		
Location	Case Type	DMOD	DTBA	Total	DMOD	DTBA	Total	DMOD	DTBA	Total	DMOD	DTBA	Total	DMOD	DTBA	Total
KNT	Domestic	110	64	174	102	82	184	129	72	201	142	94	236	483	312	795
	Paternity	25	17	42	18	19	37	21	15	36	18	12	30	82	63	145
KNT Total		135	81	216	120	101	221	150	87	237	160	106	266	372	375	940
SEA	Domestic	118	94	212	117	115	232	121	79	200	110	99	209	466	387	853
	Paternity	13	29	42	25	49	74	21	37	58	21	17	38	80	132	212
SEA Total		131	123	254	142	164	306	142	116	258	131	116	247	546	519	1065
KNT/SEA Total		266	204	470	262	265	527	292	203	495	291	222	513	1111	894	2005
		2010Q1			2010Q2			2010Q3			2010Q4			Year 2010		
Location	Case Type	DMOD	DTBA	Total	DMOD	DTBA	Total	DMOD	DTBA	Total	DMOD	DTBA	Total	DMOD	DTBA	Total
KNT	Domestic	134	75	209	155	86	241	153	69	222				442	230	672
	Paternity	20	20	40	11	19	30	24	13	37				55	52	107
KNT Total		154	95	249	166	105	271	177	82	259				497	282	779
SEA	Domestic	116	79	195	142	105	247	133	71	204				391	255	646
	Paternity	16	13	29	16	23	39	22	19	41				54	55	109
SEA Total		132	92	224	158	128	286	155	90	245				445	310	755
KNT/SEA Total		286	187	473	324	233	557	332	172	504				942	592	1534

* DMOD = parenting plan modification track; DTBA = support modification track.

Table 2. Number of Cases Resolved and Resolution Category (%)

King County Superior Court

Reporting Category	Q4/08	Q1/09	Q2/09	Q3/09	Q4/09	Q1/10	Q2/10	Q3/10*
Total Resolutions (excl. "Matters Filed with Clerk")	15675	15239	16464	16395	15168	15114	16358	16552
Criminal (excl. RALJ): # Resolved	2094	2108	2014	1804	1519	1590	1649	1712
Resolved by Jury Trial	3.3%	3.7%	4.0%	4.7%	4.7%	4.5%	3.9%	4.1%
Resolved by Non-Jury Trial	1.6%	1.0%	1.1%	1.6%	1.5%	1.1%	2.8%	1.5%
Resolved by Guilty Plea	79.7%	74.5%	72.5%	78.9%	77.3%	77.2%	77.2%	79.4%
Dismissal	14.8%	20.5%	22.1%	14.6%	16.4%	16.8%	16.0%	14.8%
Others	0.7%	0.3%	0.3%	0.3%	0.1%	0.3%	0.2%	0.3%
General Civil: # Resolved	7003	7052	7744	7505	7167	7359	7680	7610
Resolved by Jury Trial	0.4%	0.4%	0.5%	0.4%	0.4%	0.4%	0.3%	0.5%
Resolved by Non-Jury Trial	0.4%	0.5%	0.4%	0.5%	0.5%	0.5%	0.3%	0.5%
Summary Judgment	2.0%	1.9%	1.7%	1.7%	2.0%	1.9%	2.3%	2.0%
Default/ Uncontested	42.2%	43.8%	42.0%	44.9%	40.6%	40.2%	40.2%	41.7%
Arbitration	2.2%	2.0%	2.3%	2.0%	2.2%	1.8%	1.7%	1.9%
Settlement/Dismissal	49.1%	48.4%	48.1%	46.0%	50.3%	51.4%	51.1%	50.3%
Closure by Clerk	2.9%	1.6%	4.0%	3.6%	3.1%	2.4%	3.0%	2.2%
Others	0.9%	1.3%	1.2%	0.9%	0.9%	1.4%	1.1%	0.9%
Asbestos Cases (civil): # Resolved	16	60	51	50	120	53	26	11
Resolved by Jury Trial	0.0%	0.0%	0.0%	0.0%	0.0%	1.9%	0.0%	0.0%
Resolved by Non-Jury Trial	0.0%	0.0%	0.0%	0.0%	0.0%	0.0%	0.0%	0.0%
Summary Judgment	6.3%	23.3%	2.0%	4.0%	15.0%	3.8%	3.9%	9.1%
Default/ Uncontested	0.0%	1.7%	5.9%	4.0%	0.0%	0.0%	0.0%	9.1%
Arbitration	0.0%	0.0%	0.0%	0.0%	0.0%	0.0%	0.0%	0.0%
Settlement/Dismissal	93.7%	75.0%	90.2%	92.0%	82.5%	90.1%	96.2%	81.8%
Closure by Clerk	0.0%	0.0%	0.0%	0.0%	0.0%	3.8%	0.0%	0.0%
Others	0.0%	0.0%	2.0%	0.0%	2.5%	0.0%	0.0%	0.0%
Domestic: # Resolved	1849	1798	1939	1770	2076	1833	2021	2030
Resolved by Trial	3.7%	3.7%	3.8%	5.0%	4.7%	4.5%	4.8%	4.0%
Default/ Uncontested	9.0%	8.8%	7.9%	9.1%	8.4%	8.7%	8.8%	9.8%
Settlement /Dismissal	86.4%	86.1%	87.4%	84.8%	85.8%	86.0%	85.3%	84.8%
Closure by Clerk	0.6%	1.0%	0.8%	0.6%	0.7%	0.6%	0.7%	0.8%
Others	0.3%	0.4%	0.2%	0.5%	.3%	0.2%	0.5%	0.6%
Probate: # Resolved	1121	1251	1364	1251	1199	1276	1348	1356
Personal Rep. Appointed	76.3%	74.6%	72.2%	72.8%	73.5%	74.8%	74.4%	72.6%
Dismissal	3.9%	2.6%	2.8%	2.4%	2.7%	1.9%	3.6%	2.7%
Closure by Clerk	0.0%	0.0%	1.0%	0.2%	0.0%	0.0%	0.2%	0.2%
Others	19.8%	22.9%	24.0%	24.5%	23.9%	23.3%	21.7%	24.6%
Guardianship: # Resolved	339	223	266	193	215	225	256	241
Guardian Appointed	40.1%	57.0%	42.1%	58.6%	40.0%	52.9%	51.2%	60.6%
Dismissal	59.6%	42.2%	57.9%	40.9%	59.1%	47.1%	48.8%	39.0%
Closure by Clerk	0.0%	0.0%	0.0%	0.0%	0.0%	0.0%	0.0%	0.0%
Others	0.3%	0.9%	0.0%	0.5%	0.9%	0.0%	0.0%	0.4%
Adoption: # Resolved	236	139	227	136	208	150	196	164
Resolved by Trial	0.4%	0.0%	0.0%	0.0%	0.0%	2.7%	0.0%	0.6%
Uncontested	1.3%	6.5%	3.5%	2.2%	0.5%	8.7%	2.6%	3.7%
Settlement /Dismissal	98.3%	92.8%	95.6%	97.1%	99.5%	88.7%	96.9%	95.7%
Closure by Clerk	0.0%	0.0%	0.0%	0.7%	0.0%	0.0%	0.0%	0.0%
Others	0.0%	0.7%	0.9%	0.0%	0.0%	0.0%	0.5%	0.0%
Paternity: # Resolved	300	252	286	301	343	233	374	332
Resolved by Trial	2.0%	2.8%	1.8%	1.7%	0.9%	2.2%	2.1%	0.9%
Summary Judgment	36.0%	35.7%	34.3%	30.2%	37.0%	32.2%	36.6%	42.8%
Default/ Uncontested	30.3%	22.6%	24.1%	25.9%	25.4%	19.7%	31.8%	23.8%
Settlement/Dismissal	31.0%	38.1%	38.1%	41.2%	36.2%	44.6%	29.4%	32.5%
Closure by Clerk	0.7%	0.8%	1.8%	1.0%	0.6%	1.3%	0.0%	0.0%
Others	0.0%	0.0%	0.0%	0.0%	0.0%	0.0%	0.0%	0.0%

Reflecting all documents received by 10/15/2010.

Table 2 (cont.). Number of Cases Resolved and Resolution Category (%)

King County Superior Court

Reporting Category	Q4/08	Q1/09	Q2/09	Q3/09	Q4/09	Q1/10	Q2/10	Q3/10*
Mental Illness: # Resolved	561	587	619	705	629	719	813	801
Court Decision to Commit	79.5%	62.7%	74.3%	70.8%	72.3%	73.9%	65.3%	69.5%
Closed by Court	0.2%	0.5%	0.0%	0.0%	0.0%	0.3%	0.0%	0.1%
Dismissal	17.1%	19.1%	3.4%	4.4%	11.5%	12.4%	27.1%	21.7%
Others	3.2%	17.7%	22.3%	24.8%	16.2%	13.5%	7.6%	8.6%
Juvenile Dependency: # Resolved	200	251	235	874	236	245	284	336
Finding of Dependency	37.0%	48.2%	50.1%	84.9%	43.2%	53.1%	58.8%	58.0%
Dismissal	63.0%	51.4%	46.4%	13.7%	56.8%	46.2%	40.1%	41.7%
Others	0.0%	0.4%	3.0%	1.4%	0.0%	0.8%	1.1%	0.3%
Juvenile ARY/CHINS: # Resolved	79	102	92	91	91	108	99	88
Approve of Petition	12.7%	14.7%	25.0%	12.1%	26.8%	33.3%	30.3%	36.4%
Dismissal	87.3%	85.3%	75.0%	86.8%	73.2%	66.7%	69.7%	63.6%
Others	0.0%	0.0%	0.0%	1.1%	0.0%	0.0%	0.0%	0.0%
Juvenile Truancy: # Resolved	945	605	790	784	547	304	751	1061
Approve of Petition	11.1%	7.1%	1.4%	0.0%	0.4%	16.8%	4.8%	0.0%
Dismissal	88.7%	92.6%	98.5%	87.0%	17.0%	83.2%	95.2%	99.8%
Others	0.2%	0.3%	0.1%	13.0%	82.6%	0.0%	0.0%	0.2%
Juvenile Offender: # Resolved	862	732	774	864	739	953	789	736
Resolved by Trial (Fact Finding)	3.9%	4.4%	4.9%	6.7%	5.8%	3.9%	5.7%	9.0%
Resolved by Guilty Plea	36.0%	37.4%	40.8%	36.9%	36.8%	39.8%	38.0%	43.9%
Dismissal	55.7%	55.5%	51.0%	53.0%	54.7%	53.4%	53.0%	44.6%
Others (including Deferred Prosecution)	4.4%	2.7%	3.4%	3.4%	2.7%	2.9%	3.3%	2.6%
Criminal RALJ: # Resolved	44	59	50	50	41	54	47	56
RALJ Decision	68.2%	50.9%	66.0%	62.0%	73.2%	66.7%	70.2%	64.3%
Dismissal	27.3%	49.2%	24.0%	38.0%	26.8%	24.1%	23.4%	26.8%
Others	4.6%	0.0%	0.0%	0.0%	0.0%	9.3%	6.4%	8.9%
Civil RALJ: # Resolved	26	20	13	17	32	12	25	18
RALJ Decision	53.9%	45.0%	69.2%	58.8%	43.8%	50.0%	48.0%	55.6%
Dismissal	46.1%	55.0%	30.8%	41.2%	43.8%	33.3%	44.0%	33.3%
Others	0.0%	0.0%	0.0%	0.0%	12.5%	16.7%	8.0%	11.1%

* Reflecting all documents received by 10/15/2010.

Chart 2-A. Quarterly Resolutions
Total Judicial Cases Only ("Matters Filed with Clerk" excluded)

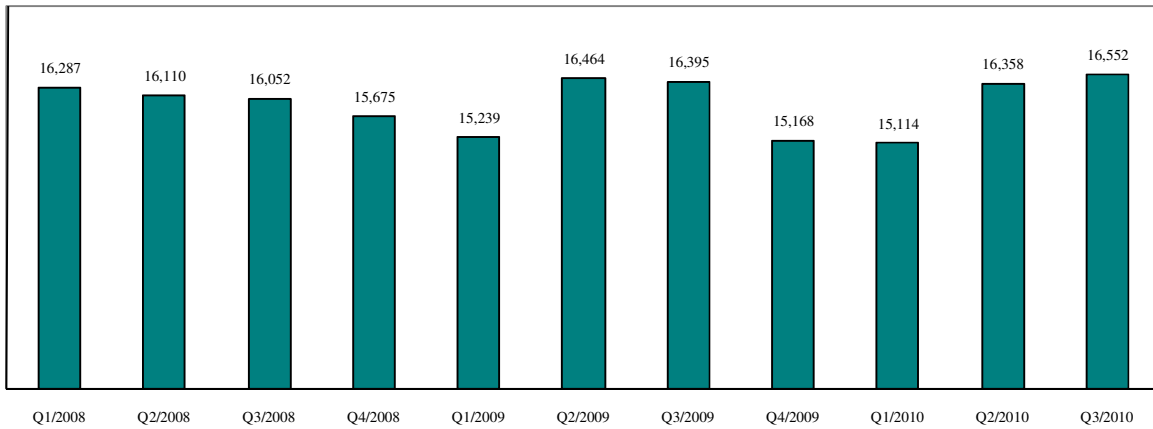
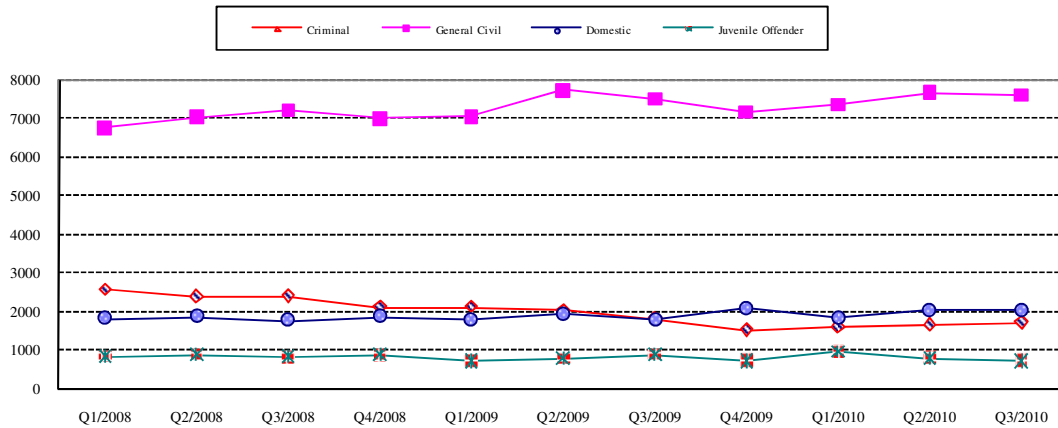


Chart 2-B. Quarterly Resolutions: Criminal, Dmestic, General Civil and Juvenile Offender Cases Only



* Note: "General Civil" is specifically defined in this report. The category of "General Civil" does **not** include the following case types: domestic, probate, guardianship, adoption, paternity, mental illness, juvenile cases (dependency, at-risk youth, child-in-need of service), civil RALJ, and tax filings that don't require judicial resources ("matters filed with clerk"). Please check the Appendix for the cause codes in the "General Civil" category.

Table 3. Age of Resolved Cases
King County Superior Court

Reporting Category	Age of Cases at Resolution							
	Q4/08	Q1/09	Q2/09	Q3/09	Q4/09	Q1/10	Q2/10	Q3/10*
Criminal (excl. RALJ)								
Age (days)								
50% Cases Resolved by Day	89	105	83	90	93	99	95	97
90% Cases Resolved by Day	315	393	321	323	329	394	367	345
98% Cases Resolved by Day	681	1110	761	456	783	730	946	945
Comparison with Court Standard of								
90% in 4 months	63%	56%	64%	62%	60%	59%	60%	61%
98% in 6 months	78%	71%	76%	76%	77%	75%	74%	77%
100% in 9 months	87%	83%	86%	86%	87%	85%	84%	87%
General Civil ⁽¹⁾								
Age (days)								
50% Cases Resolved by Day	21	22	27	21	36	36	35	26
90% Cases Resolved by Day	404	404	391	417	507	508	525	476
98% Cases Resolved by Day	828	728	664	536	696	671	777	667
Comparison with Court Standard of								
90% in 12 months	89%	89%	90%	89%	84%	85%	82%	87%
98% in 18 months	94%	93%	96%	96%	92%	94%	92%	95%
100% in 24 months	98%	97%	99%	99%	98%	99%	97%	99%
Domestic								
Age (days)								
50% Cases Resolved by Day	158	175	172	153	165	162	158	150
90% Cases Resolved by Day	381	369	378	391	401	400	370	375
98% Cases Resolved by Day	738	556	527	452	670	607	591	581
Comparison with Court Standard of								
90% in 8 months	67%	67%	64%	68%	68%	67%	67%	68%
98% in 10 months	76%	76%	73%	75%	76%	84%	75%	75%
100% in 14 months	92%	90%	94%	92%	93%	91%	94%	93%
Probate								
Age (days)								
50% Cases Resolved by Day	0	0	0	0	0	0	0	0
90% Cases Resolved by Day	26	14	27	19	8	23	13	16
98% Cases Resolved by Day	1175	886	652	155	436	565	659	630
Comparison with Court Standard of								
90% in 8 months	93%	94%	94%	95%	98%	94%	95%	96%
98% in 18 months	95%	96%	97%	98%	99%	98%	97%	97%
100% in 36 months	98%	99%	99%	100%	99%	100%	99%	99%
Guardianship								
Age (days)								
50% Cases Resolved by Day	78	61	66	57	87	78	62	62
90% Cases Resolved by Day	2145	307	3345	161	882	983	393	244
98% Cases Resolved by Day	3485	2254	4190	216	4362	4356	1355	665
Comparison with Court Standard of								
90% in 8 months	72%	88%	74%	97%	76%	75%	87%	89%
98% in 18 months	74%	95%	75%	98%	84%	86%	94%	98%
100% in 36 months	78%	96%	78%	100%	92%	92%	97%	99%
Adoption								
Age (days)								
50% Cases Resolved by Day	53	64	65	53	52	51	36	58
90% Cases Resolved by Day	234	413	449	268	257	369	259	518
98% Cases Resolved by Day	869	968	1446	442	564	549	647	890
Comparison with Court Standard of								
90% in 8 months	91%	85%	83%	87%	88%	87%	90%	82%
98% in 10 months	93%	87%	85%	92%	89%	89%	94%	85%
100% in 14 months	97%	90%	89%	94%	95%	94%	95%	87%
Paternity								
Age (days)								
50% Cases Resolved by Day	124	129	132	122	133	163	170	161
90% Cases Resolved by Day	316	318	322	321	299	328	298	297
98% Cases Resolved by Day	488	476	450	385	673	521	505	444
Comparison with Court Standard of								
90% in 8 months	83%	80%	77%	80%	83%	77%	80%	79%
98% in 10 months	90%	88%	85%	88%	90%	85%	90%	90%
100% in 14 months	96%	97%	96%	97%	96%	96%	95%	97%

Table 3 (cont.) Age of Resolved Cases
King County Superior Court

Reporting Category	Age of Cases at Resolution							
	Q4/08	Q1/09	Q2/09	Q3/09	Q4/09	Q1/10	Q2/10	Q3/10*
Mental Illness**								
Age (days)								
50% Cases Resolved by Day	2	3	4	3	2	3	3	3
90% Cases Resolved by Day	7	17	14	18	11	19	29	14
98% Cases Resolved by Day	24	47	50	29	40	96	356	346
Juvenile Dependency								
Age (days)								
50% Cases Resolved by Day	280	140	140	462	231	154	122	106
90% Cases Resolved by Day	1598	1187	1673	1568	1730	1556	1337	1029
98% Cases Resolved by Day	4064	2323	2954	1757	3899	3469	2906	3716
Comparison with Court Standard of								
90% in 8 months	50%	64%	60%	27%	51%	60%	68%	73%
98% in 10 months	53%	65%	60%	29%	56%	63%	71%	74%
100% in 14 months	55%	70%	65%	46%	59%	68%	74%	75%
Juvenile ARY/CHINS								
Age (days)								
50% Cases Resolved by Day	101	70	72	92	58	44	38	49
90% Cases Resolved by Day	258	245	266	255	235	284	262	242
98% Cases Resolved by Day	323	320	311	281	740	2059	1585	300
Comparison with Court Standard of								
90% in 8 months	85%	89%	85%	82%	91%	87%	86%	88%
98% in 10 months	92%	95%	96%	97%	95%	93%	93%	98%
100% in 14 months	100%	100%	100%	100%	98%	94%	97%	100%
Juvenile Truancy**								
Age (days)								
50% Cases Resolved by Day	195	118	50	23	87	17	56	20
90% Cases Resolved by Day	1604	1374	985	177	1271	88	1284	644
98% Cases Resolved by Day	2176	1913	1443	258	1620	429	1640	1546
Juvenile Offender								
Age (days)								
50% Cases Resolved by Day	48	63	53	60	71	73	61	59
90% Cases Resolved by Day	134	159	146	141	202	350	190	175
98% Cases Resolved by Day	307	479	317	193	513	1179	647	408
Comparison with Court Standard of								
90% in 4 months	86%	81%	85%	86%	76%	72%	80%	78%
98% in 6 months	94%	92%	93%	94%	88%	83%	89%	91%
100% in 9 months	99%	96%	98%	95%	95%	88%	94%	95%
Criminal RALJ								
Age (days)								
50% Cases Resolved by Day	254	286	248	350	419	348	294	272
90% Cases Resolved by Day	492	511	478	600	627	656	455	431
98% Cases Resolved by Day	708	570	543	674	1249	1041	616	590
Comparison with Court Standard of								
90% in 4 months	9%	7%	10%	8%	12%	2%	0%	5%
98% in 5 months	11%	14%	16%	12%	14%	2%	0%	5%
100% in 6 months	25%	17%	30%	12%	19%	6%	0%	7%
Civil RALJ								
Age (days)								
50% Cases Resolved by Day	195	173	188	166	126	232	171	163
90% Cases Resolved by Day	303	476	262	239	225	312	247	218
98% Cases Resolved by Day	1120	773	311	260	336	379	325	245
Comparison with Court Standard of								
90% in 4 months	27%	0%	23%	29%	50%	17%	12%	22%
98% in 5 months	31%	30%	23%	29%	53%	17%	16%	33%
100% in 6 months	43%	55%	46%	64%	75%	17%	60%	72%

* Reflecting all documents received by 10/15/2010.

** No standard yet.

Table 4. Active Pending Caseload Statistics
King County Superior Court

Reporting Category	Q4/08	Q1/09	Q2/09	Q3/09	Q4/09	Q1/10	Q2/10	Q3/10*
Total (incl. RALJ)								
Previous Pending (+)	22158	22309	22557	22919	22026	22979	22982	22169
New Filing (+)	14808	15584	16481	15008	14995	15137	15314	14962
Resolved (-)	15675	15239	16464	16395	15168	15114	16358	16552
End Pending	22309	22557	22919	22026	22979	22982	22169	21682
Resolution Rate**	1.059	0.978	0.999	1.092	1.012	0.998	1.068	1.106
Criminal (excl. RALJ)								
Previous Pending (+)	3703	3338	2929	2804	2285	2582	2595	2837
New Filing (+)	1713	1675	1713	1579	1524	1638	1716	1630
Resolved (-)	2094	2108	2014	1804	1519	1590	1649	1712
End Pending	3338	2929	2804	2285	2582	2595	2837	2660
Resolution Rate**	1.222	1.259	1.176	1.142	0.997	0.971	0.961	1.050
General Civil								
Previous Pending (+)	8546	8829	9662	10236	10446	11166	10779	10117
New Filing (+)	6823	7499	7822	7296	7144	6825	6891	7148
Resolved (-)	7003	7052	7744	7505	7167	7359	7681	7610
End Pending	8829	9662	10236	10446	11166	10779	10117	10059
Resolution Rate**	1.026	0.940	0.990	1.029	1.003	1.078	1.114	1.065
Asbestos Cases (civil) ⁽¹⁾								
Previous Pending (+)	414	433	381	353	242	133	91	83
New Filing (+)	7	5	10	10	5	5	6	11
Resolved (-)	16	60	51	50	120	53	26	11
End Pending	433	381	353	242	133	91	83	95
Resolution Rate**	2.286	1.200	5.100	5.000	24.000	10.6	4.337	1.000
Domestic								
Previous Pending (+)	4234	4048	4220	4282	4527	4375	4624	4650
New Filing (+)	1612	1880	1901	2033	1847	2034	2033	2045
Resolved (-)	1849	1798	1939	1770	2076	1833	2021	2030
End Pending	4084	4220	4282	4527	4375	4624	4650	4673
Resolution Rate**	1.147	0.956	1.020	0.871	1.124	0.901	0.994	0.993
Probate								
Previous Pending (+)	608	621	606	574	601	635	657	614
New Filing (+)	1115	1270	1343	1257	1238	1275	1333	1327
Resolved (-)	1121	1251	1364	1251	1199	1276	1348	1356
End Pending	621	606	574	601	635	657	614	616
Resolution Rate**	1.005	0.985	1.016	0.995	0.968	1.001	1.011	1.022
Guardianship								
Previous Pending (+)	464	380	377	321	348	304	308	277
New Filing (+)	251	228	214	222	172	221	236	227
Resolved (-)	339	223	266	193	215	225	256	241
End Pending	380	377	321	348	304	308	277	269
Resolution Rate**	1.351	0.978	1.243	0.869	1.250	1.018	1.085	1.062
Adoption								
Previous Pending (+)	287	253	291	250	260	225	250	232
New Filing (+)	202	177	185	147	174	173	177	172
Resolved (-)	236	139	227	136	208	150	196	164
End Pending	253	291	250	260	225	250	232	242
Resolution Rate**	1.168	0.785	1.227	0.925	1.195	0.867	1.107	0.953
Paternity								
Previous Pending (+)	448	442	428	454	535	523	622	572
New Filing (+)	284	237	312	375	305	332	308	314
Resolved (-)	300	252	286	301	343	233	374	332
End Pending	442	428	454	535	523	622	572	560
Resolution Rate**	1.056	1.063	0.917	0.803	1.125	0.702	1.214	1.057

* Reflecting all documents received by 10/15/2010.

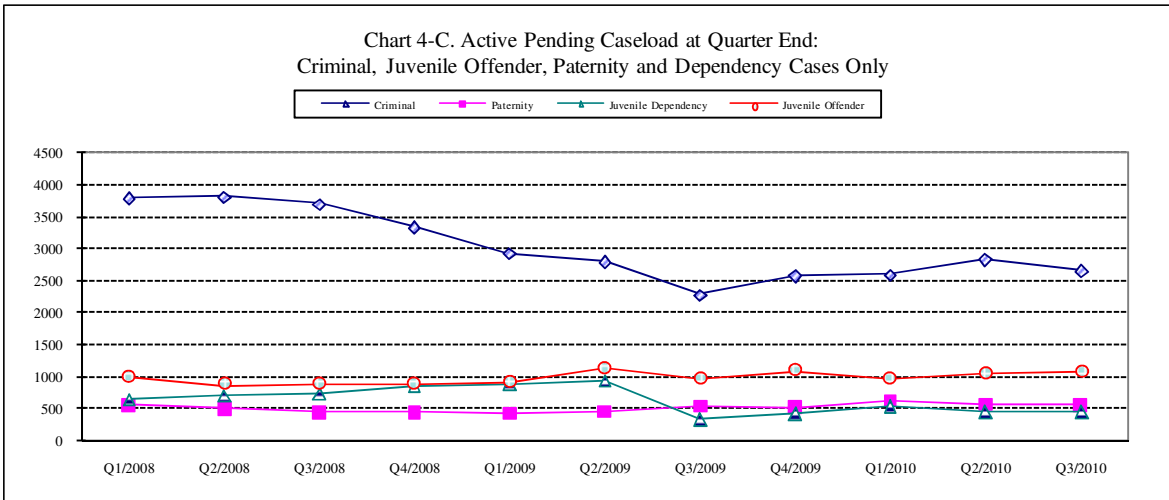
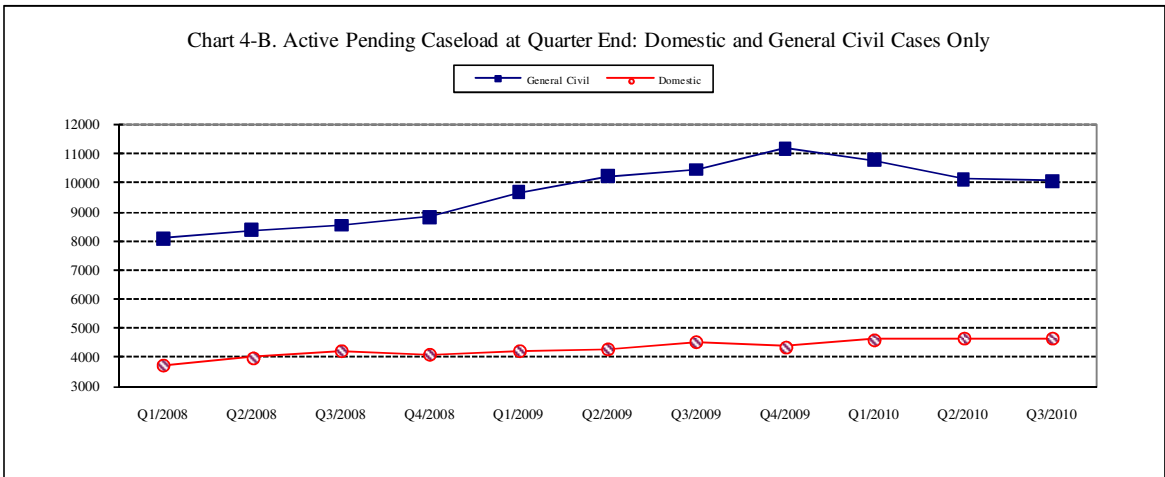
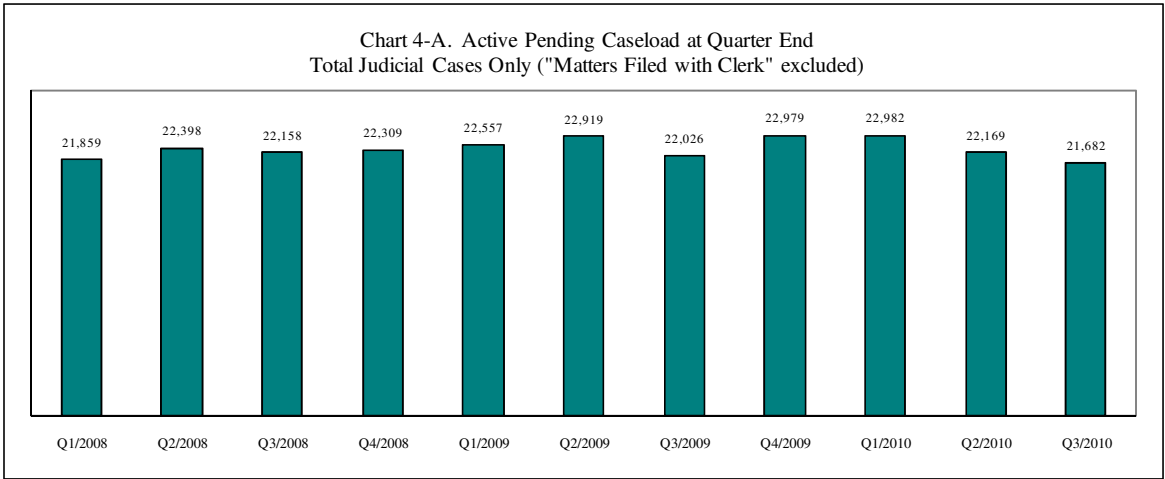
** A value of "Resolution Rate" less than one indicates the resolution pace is slower than the filing pace.

Table 4 (cont.) Active Pending Caseload Statistics
King County Superior Court

Reporting Category		Q4/08	Q1/09	Q2/09	Q3/09	Q4/09	Q1/10	Q2/10	Q3/10*
Mental Illness									
Previous Pending	(+)	258	301	319	366	392	465	487	436
New Filing	(+)	597	644	659	708	718	730	769	805
Resolved	(-)	561	587	619	705	629	719	813	801
End Pending		301	319	366	392	465	487	436	447
Resolution Rate**		0.940	0.911	0.939	0.996	0.876	0.985	1.057	0.995
Juvenile Dependency									
Previous Pending	(+)	730	853	886	933	348	424	542	459
New Filing	(+)	240	250	225	204	222	280	264	236
Resolved	(-)	200	251	235	874	236	245	284	336
End Pending		853	886	933	348	424	542	459	453
Resolution Rate**		0.833	1.004	1.044	4.284	1.063	0.875	1.076	1.424
Juvenile ARY/CHINS									
Previous Pending	(+)	128	150	152	150	139	153	160	156
New Filing	(+)	79	89	87	72	93	108	105	68
Resolved	(-)	79	102	92	91	97	108	99	88
End Pending		150	152	150	139	153	160	156	149
Resolution Rate**		1.000	1.146	1.057	1.264	1.043	1.000	0.943	1.294
Juvenile Truancy									
Previous Pending	(+)	1221	1529	1210	861	729	690	692	475
New Filing	(+)	941	714	790	41	529	595	474	14
Resolved	(-)	945	605	790	784	547	304	751	1061
End Pending		1529	1210	861	729	690	692	475	219
Resolution Rate**		1.004	0.847	1.000	19.122	1.034	0.511	1.584	75.79
Juvenile Offender									
Previous Pending	(+)	814	875	900	1132	968	1091	967	1055
New Filing	(+)	893	865	1151	994	949	862	932	914
Resolved	(-)	862	732	774	864	739	953	789	736
End Pending		875	900	1132	968	1091	967	1055	1070
Resolution Rate**		0.965	0.846	0.672	0.869	0.779	1.106	0.847	0.805
Criminal RALJ									
Previous Pending	(+)	189	187	165	168	164	171	160	161
New Filing	(+)	39	35	52	46	47	41	49	39
Resolved	(-)	44	59	52	50	41	54	47	56
End Pending		187	165	168	164	171	160	161	141
Resolution Rate**		1.128	1.686	0.962	1.087	0.872	1.317	0.959	1.436
Civil RALJ									
Previous Pending	(+)	48	34	31	35	42	42	48	45
New Filing	(+)	12	16	17	24	28	18	21	12
Resolved	(-)	26	20	13	17	32	12	25	18
End Pending		34	31	35	42	42	48	45	39
Resolution Rate**		2.167	1.250	0.765	0.708	1.142	0.667	1.190	1.550

* Reflecting all documents received by 10/15/2010.

** A value of "Resolution Rate" less than one indicates the resolution pace is slower than the filing pace.



* Note: "General Civil" is specifically defined in this report. The category of "General Civil" does **not** include the following case types: domestic, probate, guardianship, adoption, paternity, mental illness, juvenile cases (dependency, at-risk youth, child-in-need of service), civil RALJ, and tax filings that don't require judicial resources ("matters filed with clerk"). Please check the Appendix for the cause codes in the "General Civil" category.

Table 5. Age of Pending Cases

King County Superior Court

Reporting Category	Age of Pending Cases and # of Cases in Each Age Interval							
	Q4/08	Q1/09	Q2/09	Q3/09	Q4/09	Q1/10	Q2/10	Q3/10*
Criminal (excl. RALJ): # of Cases	3338	2929	2804	2285	2582	2595	2837	2660
Age (days)								
Median (50 percentile)	119	106	100	119	106	93	79	100
95 percentile	974	624	608	649	695	715	687	711
# of Cases in Age Interval								
0 - 60 days (0 - 2 months)	930	1022	967	714	852	991	1208	933
61 - 120 days (3 - 4 months)	755	567	571	448	547	493	566	605
121 - 180 days (5 - 6 months)	439	333	337	292	302	280	326	366
181 - 270 days (7 - 9 months)	398	357	282	250	265	276	229	277
> 270 days (> 9 months)	816	650	647	581	616	555	508	479
General Civil: # of Cases	8829	9662	10236	10466	11166	10779	10117	10059
Age (days)								
Median (50 percentile)	149	148	149	163	177	176	163	176
95 percentile	576	567	566	569	577	598	548	571
# of Cases in Age Interval								
0 - 120 days (0 - 4 months)	3894	4247	4527	4163	4320	4208	4123	3965
121 - 240 days (5 - 8 months)	1964	2171	2097	2408	2579	2324	2094	2143
241 - 360 days (9 - 12 months)	1353	1429	1530	1565	1771	1807	1625	1565
361 - 540 days (13 - 18 months)	1056	1250	1516	1645	1746	1682	1738	1726
541 - 720 days (19 - 24 months)	382	373	341	444	504	511	371	472
> 720 days (> 24 months)	180	192	225	221	246	247	166	188
Asbestos Cases (civil)⁽¹⁾ : # of Cases	433	381	353	242	133	91	83	85
Age (days)								
Median (50 percentile)	1247	1268	1230	1269	976	826	566	519
95 percentile	1825	1805	1888	1980	2072	2162	2239	2326
# of Cases in Age Interval								
0 - 120 days (0 - 4 months)	7	6	10	11	7	7	10	15
121 - 240 days (5 - 8 months)	16	8	4	7	9	11	9	8
241 - 360 days (9 - 12 months)	36	29	12	4	8	8	13	7
361 - 540 days (13 - 18 months)	42	34	43	23	12	6	9	15
541 - 720 days (19 - 24 months)	42	29	33	17	11	11	9	7
> 720 days (> 24 months)	290	275	251	180	86	48	33	33
Domestic: # of Cases	4084	4220	4282	4527	4375	4624	4650	4673
Age (days)								
Median (50 percentile)	125	118	111	111	119	115	114	119
95 percentile	378	391	411	429	457	442	457	477
# of Cases in Age Interval								
0 - 120 days (0 - 4 months)	2009	2145	2299	2417	2216	2368	2444	2354
121 - 240 days (5 - 8 months)	1265	1144	1034	1177	1185	1231	1149	1291
241 - 360 days (9 - 12 months)	575	662	608	544	609	644	652	570
361 - 540 days (13 - 18 months)	177	201	243	283	228	220	246	283
> 540 days (> 18 months)	58	68	98	106	137	161	159	175
Probate: # of Cases	621	606	574	601	635	657	614	616
Age (days)								
Median (50 percentile)	302	309	295	304	326	350	368	386
95 percentile	1759	1514	1482	1539	1551	1597	1655	1696
# of Cases in Age Interval								
0 - 120 days (0 - 4 months)	139	141	147	155	147	156	114	108
121 - 240 days (5 - 8 months)	110	110	110	94	103	102	111	97
241 - 360 days (9 - 12 months)	106	93	72	91	89	80	79	90
361 - 540 days (13 - 18 months)	82	98	98	86	103	109	80	93
> 540 days (> 18 months)	184	164	147	175	193	210	230	228

Reflecting all documents received by 10/15/2010.

Table 5 (cont.). Age of Pending Cases

King County Superior Court

Reporting Category	Age of Pending Cases and # of Cases in Each Age Interval							
	Q4/08	Q1/09	Q2/09	Q3/09	Q4/09	Q1/10	Q2/10	Q3/10*
Guardianship: # of Cases	380	377	321	348	304	308	277	269
Age (days)								
Median (50 percentile)	185	153	104	126	135	76	63	63
95 percentile	3862	3949	2655	2621	1918	1157	609	632
# of Cases in Age Interval								
0 - 120 days (0 - 4 months)	169	176	175	165	140	172	173	164
121 - 240 days (5 - 8 months)	30	38	39	58	54	51	35	41
241 - 360 days (9 - 12 months)	21	13	19	27	37	28	30	22
361 - 540 days (13 - 18 months)	23	16	16	21	23	29	22	23
> 540 days (> 18 months)	157	134	72	77	50	28	17	19
Adoption: # of Cases	253	291	250	260	225	250	232	242
Age (days)								
Median (50 percentile)	156	131	142	133	177	119	163	129
95 percentile	2325	2121	2294	2345	2543	2568	2724	2751
# of Cases in Age Interval								
0 - 120 days (0 - 4 months)	111	140	117	121	93	126	100	116
121 - 240 days (5 - 8 months)	44	45	48	41	41	31	42	37
241 - 360 days (9 - 12 months)	33	31	25	28	22	24	16	26
361 - 540 days (13 - 18 months)	22	32	24	25	21	16	26	22
> 540 days (> 18 months)	43	43	36	45	48	53	48	41
Paternity: # of Cases	442	428	454	535	523	622	572	560
Age (days)								
Median (50 percentile)	86	111	85	80	98	103	99	102
95 percentile	314	350	341	300	310	302	328	345
# of Cases in Age Interval								
0 - 120 days (0 - 4 months)	286	233	287	355	316	355	338	317
121 - 240 days (5 - 8 months)	104	131	111	135	149	206	159	193
241 - 360 days (9 - 12 months)	42	44	38	32	42	48	57	30
361 - 540 days (13 - 18 months)	8	19	13	9	16	12	18	19
> 540 days (> 18 months)	2	1	5	4	0	1	0	1
Mental Illness: # of Cases	301	319	366	392	465	487	436	447
Age (days)								
Median (50 percentile)	320	278	287	351	325	380	535	590
95 percentile	1384	1372	1429	1514	1592	1668	1785	1869
# of Cases in Age Interval								
0 - 120 days (0 - 4 months)	79	103	122	96	120	106	74	82
121 - 240 days (5 - 8 months)	44	52	43	68	75	61	59	47
> 240 days (> 8 months)	178	164	201	228	270	320	303	318
Juvenile Dependency: # of Cases	853	886	933	348	424	542	459	453
Age (days)								
Median (50 percentile)	267	292	302	79	94	98	91	122
95 percentile	1427	1510	1581	458	304	370	275	367
# of Cases in Age Interval								
0 - 60 days (0 - 2 months)	163	155	124	143	152	181	166	148
61 - 120 days (3 - 4 months)	122	119	131	68	109	129	121	78
121 - 180 days (5 - 6 months)	56	74	80	77	62	68	83	47
181 - 270 days (7 - 9 months)	99	80	99	33	65	82	57	100
> 270 days (> 9 months)	413	458	499	27	36	82	32	80
Juvenile ARY/CHINS: # of Cases	150	152	150	139	153	160	156	149
Age (days)								
Median (50 percentile)	109	150	164	168	170	176	127	214
95 percentile	1093	1184	1275	1441	1459	1528	1582	1674
# of Cases in Age Interval								
0 - 60 days (0 - 2 months)	43	38	40	33	40	58	40	30
61 - 120 days (3 - 4 months)	33	22	17	22	24	11	31	15
121 - 180 days (5 - 6 months)	21	30	21	18	16	13	26	19
181 - 270 days (7 - 9 months)	21	23	22	13	17	22	10	33
> 270 days (> 9 months)	32	39	50	53	56	56	49	52

* Reflecting all documents received by 10/15/2010.

Table 5 (cont.). Age of Pending Cases

King County Superior Court

Reporting Category	Age of Pending Cases and # of Cases in Each Age Interval							
	Q4/08	Q1/09	Q2/09	Q3/09	Q4/09	Q1/10	Q2/10	Q3/10*
Juvenile Truancy: # of Cases	1529	1210	861	729	690	692	475	219
Age (days)								
Median (50 percentile)	189	279	789	951	513	547	398	1977
95 percentile	1540	1582	1836	1959	2062	2152	2290	2537
# of Cases in Age Interval								
0 - 60 days (0 - 2 months)	545	262	99	3	192	168	58	13
61 - 120 days (3 - 4 months)	209	109	41	32	10	39	79	2
121 - 180 days (5 - 6 months)	0	213	31	26	0	9	41	11
181 - 270 days (7 - 9 months)	61	16	160	33	48	2	20	14
> 270 days (> 9 months)	714	610	530	635	440	474	277	179
Juvenile Offender: # of Cases	875	900	1132	968	1091	967	1055	1070
Age (days)								
Median (50 percentile)	63	56	56	73	59	51	55	68
95 percentile	756	811	736	842	358	379	442	535
# of Cases in Age Interval								
0 - 60 days (0 - 2 months)	408	476	594	414	556	517	555	500
61 - 120 days (3 - 4 months)	212	149	253	224	254	182	234	221
121 - 180 days (5 - 6 months)	64	88	66	107	106	84	70	117
181 - 270 days (7 - 9 months)	42	46	56	53	94	66	64	74
> 270 days (> 9 months)	149	141	163	170	82	118	132	158
Criminal RALJ: # of Cases	187	165	168	164	171	160	161	141
Age (days)								
Median (50 percentile)	174	217	220	148	183	172	153	151
95 percentile	498	527	588	577	525	429	479	508
# of Cases in Age Interval								
0 - 60 days (0 - 2 months)	25	19	40	32	31	30	34	23
61 - 120 days (3 - 4 months)	30	23	20	35	31	29	29	13
121 - 180 days (5 - 6 months)	40	27	20	25	23	27	26	24
181 - 270 days (7 - 9 months)	37	43	21	22	43	35	34	22
> 270 days (> 9 months)	55	53	67	50	25	39	38	18
Civil RALJ: # of Cases	34	31	35	42	42	48	45	39
Age (days)								
Median (50 percentile)	119	84	97	85	72	124	102	140
95 percentile	688	559	650	300	298	265	356	1107
# of Cases in Age Interval								
0 - 60 days (0 - 2 months)	6	10	13	12	14	15	15	5
61 - 120 days (3 - 4 months)	14	9	10	17	14	8	14	11
121 - 180 days (5 - 6 months)	8	6	6	7	6	18	7	12
181 - 270 days (7 - 9 months)	2	3	4	3	4	5	5	4
> 270 days (> 9 months)	4	3	2	3	4	2	4	7

* Reflecting all documents received by 10/15/2010.

Table 6. Seattle vs. Regional Justice Center (KNT): Filing, Resolution, Pending Caseload (%)

King County Superior Court

	Q3/09		Q4/09		Q1/10		Q2/10		Q3/10	
	SEA	KNT	SEA	KNT	SEA	KNT	SEA	KNT	SEA	KNT
Filings Total <i>(excl. filings with clerk)</i>	66%	34%	66%	34%	66%	34%	66%	34%	65%	35%
Criminal (excl. RALJ)	60%	40%	57%	43%	61%	39%	62%	38%	60%	40%
General Civil (excl. RALJ)	60%	40%	62%	38%	60%	40%	59%	41%	58%	42%
Domestic	61%	39%	61%	39%	62%	38%	63%	37%	62%	38%
Probate	78%	22%	77%	23%	78%	22%	79%	21%	75%	25%
Guardianship	66%	34%	66%	34%	64%	36%	61%	39%	64%	36%
Adoption	74%	26%	78%	22%	80%	20%	75%	25%	79%	21%
Paternity	52%	48%	47%	53%	46%	54%	46%	54%	45%	55%
Mental Illness	100%	---	100%	---	100%	---	100%	---	100%	---
Juvenile Dependency	61%	39%	70%	30%	71%	29%	61%	39%	58%	42%
Juvenile ARY/CHINS	53%	47%	52%	48%	58%	42%	55%	45%	57%	43%
Juvenile Truancy	5%	95%	42%	58%	43%	57%	44%	56%	64%	36%
Juvenile Offender	100%	---	100%	---	100%	---	100%	---	100%	---
Criminal RALJ	100%	---	92%	8%	93%	7%	92%	8%	97%	3%
Civil RALJ	100%	---	96%	4%	94%	6%	95%	5%	100%	---
Resolution Total <i>(excl. filings with clerk)</i>	63%	37%	64%	36%	66%	34%	66%	34%	63%	37%
Criminal (excl. RALJ)	61%	39%	61%	39%	59%	41%	62%	38%	63%	37%
General Civil (excl. RALJ)	59%	41%	62%	38%	60%	40%	59%	41%	58%	42%
Domestic	62%	38%	62%	38%	62%	38%	62%	38%	63%	37%
Probate	77%	23%	77%	23%	78%	22%	79%	21%	75%	25%
Guardianship	63%	37%	60%	40%	71%	29%	60%	40%	66%	34%
Adoption	72%	28%	75%	25%	79%	21%	79%	21%	74%	26%
Paternity	50%	50%	46%	54%	44%	56%	51%	49%	40%	60%
Mental Illness	100%	---	100%	---	100%	---	100%	---	100%	---
Juvenile Dependency	65%	35%	57%	43%	66%	34%	65%	35%	63%	37%
Juvenile ARY/CHINS	53%	47%	39%	61%	45%	55%	55%	45%	42%	58%
Juvenile Truancy	18%	92%	10%	90%	37%	63%	59%	41%	37%	63%
Juvenile Offender	100%	---	100%	---	100%	---	100%	---	100%	---
Criminal RALJ	100%	---	100%	---	100%	---	94%	6%	96%	4%
Civil RALJ	100%	---	100%	---	100%	---	96%	4%	89%	11%
Pending Total <i>(excl. filings with clerk)</i>	69%	31%	69%	31%	69%	31%	69%	31%	69%	31%
Criminal (excl. RALJ)	55%	45%	55%	45%	57%	43%	58%	42%	56%	44%
General Civil (excl. RALJ)	72%	28%	72%	28%	71%	29%	72%	28%	71%	29%
Domestic	61%	39%	61%	39%	61%	39%	61%	39%	61%	39%
Probate	86%	14%	87%	13%	86%	14%	88%	12%	86%	14%
Guardianship	60%	40%	63%	37%	58%	42%	60%	40%	59%	41%
Adoption	72%	28%	73%	27%	74%	26%	72%	28%	75%	25%
Paternity	48%	52%	48%	52%	48%	52%	46%	54%	48%	52%
Mental Illness	100%	---	100%	---	100%	---	100%	---	100%	---
Juvenile Dependency	63%	37%	75%	25%	78%	22%	74%	26%	72%	28%
Juvenile ARY/CHINS	50%	50%	60%	40%	69%	31%	70%	30%	79%	21%
Juvenile Truancy	49%	51%	61%	39%	59%	41%	46%	54%	74%	26%
Juvenile Offender	100%	---	100%	---	100%	---	100%	---	100%	---
Criminal RALJ	100%	---	97%	3%	95%	5%	94%	6%	94%	6%
Civil RALJ	100%	---	98%	2%	96%	4%	96%	4%	97%	3%

Reflecting all documents received by 10/15/2010.

Table 7. Quarterly Utilization of Pro Tem Judges/Commissioners ⁽¹⁾

Category	Q1/08	Q2/08	Q3/08	Q4/08	Q1/09	Q2/09	Q3/09	Q4/09	Q1/10	Q2/10	Q3/10
Grand Total	1780	2062	1355	1130	922	1324	1246	1407	884	1466	1029
<i>Paid hours</i>	1780	2062	1355	1130	922	1324	1246	1407	884	1466	1029
<i>Donated hours</i>	---	---	---	---	---	---	---	---	---	---	---
Judge FTE Equivalent ⁽³⁾	4.0	4.6	3.0	2.5	2.0	2.9	2.8	3.1	2.0	3.3	2.3
By Work Type											
On Trial/Hearings	1623	1910	1195	925	834	1154	1077	1133	757	1282	859
On Preparation	157	153	161	205	88	170	169	274	127	184	168
Other or Unspecified Activity	0	0	0	0	0	0	0	0	0	0	2
By Case Type											
Criminal	145	126	36	38	7	28	1	43	6	20	0
Civil	892	916	520	660	316	693	807	767	397	570	541
Domestic	334	486	500	330	156	215	264	238	97	331	162
Probate	0	0	0	0	0	0	0	0	0	0	0
Guardianship	0	0	0	0	0	0	0	0	0	0	0
Adoption	0	0	0	0	0	0	0	0	0	0	0
Paternity	0	0	0	0	0	0	0	0	0	0	0
Mental Illness	0	0	0	0	0	0	0	0	0	0	0
Juvenile Dependency	0	0	0	0	121	135	48	90	78	59	69
Juvenile Truancy	10	94	42	14	119	40	20	24	108	87	43
Juvenile Offender	399	441	259	89	204	213	107	246	199	204	214
Other or Unspecified	0	0	0	0	0	0	0	0	0	195	0
By Calendar Type											
Criminal Plea	67	4	0	0	0	0	0	0	0	0	0
Criminal Trial	25	47	8	0	0	0	1	0	0	0	0
Civil Trial	68	1	0	0	3	103	190	113	28	29	30
Individual Calendar	0	0	0	0	0	0	0	0	0	0	0
Family Law	278	379	456	438	201	323	310	543	173	392	290
Ex Parte	632	572	303	189	131	275	323	163	186	292	273
Mental Illness	80	145	67	61	56	90	131	64	51	55	51
Juvenile Dependency	165	143	89	166	178	222	89	117	104	158	118
Juvenile CHINS/ARY	0	0	0	0	0	0	0	0	0	0	0
Juvenile Truancy	10	94	42	14	119	40	20	24	108	87	43
Juvenile Offender	399	441	259	89	204	213	107	246	199	204	214
Other or Unspecified	57	239	134	172	33	59	76	139	37	249	9
By Reason											
Congestion	702	892	460	264	203	174	287	283	67	612	222
Medical Coverage	164	69	105	243	287	102	195	240	180	134	132
Vacation	477	573	645	507	245	556	649	599	425	529	547
Training	437	529	146	116	185	425	95	213	135	424	129
Judicial Conference	0	0	0	0	0	0	0	0	0	12	0
Others	0	0	0	0	0	68	20	73	78	0	0

(1) This table is based on the time sheet for compensation

(2) Judge FTE Equivalent = # of hours / [7.5 hours/day * 20 days/month * 3 months] = # of hours/450.

The statistics on Pro Tem judge/commissioner use provide information on the external help the court has obtained in order to handle the workload. The data are collected on the time sheet for compensation (therefore it does not include unpaid volunteering or visiting judges/commissioners). The database on Pro Tem judges/commissioners is managed by the Administrative Services Department (ASD) of King County Superior Court. The Pro Tem total hours presented in this section are provided quarterly by ASD.

Table 8. Family Law Activity

	1ST QTR, 2009		2ND QTR, 2009		3RD QTR, 2009		4TH QTR, 2009		1ST QTR, 2010		2ND QTR, 2010		3RD QTR, 2010	
	HRGS	ORDS	HRGS	ORDS	HRGS	ORDS	HRGS	ORDS	HRGS	ORDS	HRGS	ORDS	HRGS	ORDS
SEATTLE														
FAM.LAW	645	2390	745	2709	937	2665	961	2482	1005	2489	1057	2332	911	2366
DAILY AVG.	11	39	12	44	15	44	16	41	16	41	17	38	15	39
PATERNITY	563	2315	608	2531	712	2344	787	2539	615	2058	828	2198	691	1978
DAILY AVG.	9	38	10	41	12	38	13	42	10	34	14	36	11	32
DOM. VIOL.	289	436	394	522	409	545	471	583	452	542	435	549	483	589
DAILY AVG.	5	7	6	9	7	9	8	10	7	9	7	9	8	10
KENT														
FAM.LAW	403	1636	527	1835	651	1887	662	1762	675	1775	688	1772	646	1903
DAILY AVG.	7	27	9	30	11	31	11	29	11	29	11	29	11	31
PATERNITY	327	1220	390	1330	472	1439	485	1440	414	1222	497	1497	480	1583
DAILY AVG.	5	20	6	22	8	24	8	24	7	20	8	25	8	26
DOM. VIOL.	281	541	333	579	477	608	466	589	403	526	467	515	402	496
DAILY AVG.	5	9	5	9	8	10	8	10	7	9	8	8	7	8
GRAND TOTAL	2508	8538	2997	9506	3658	9488	3832	9395	3564	8612	3972	8863	3613	8915
OVERALL DAILY AVG.	41	140	49	156	60	156	63	154	58	141	65	145	59	146

The statistics on family law and Ex Parte activity are obtained directly from SCOMIS using the appropriate docket codes.

Table 9. Ex Parte Activity

SEATTLE	3RD QTR, 2009		4TH QTR, 2009		1ST QTR, 2010		2ND QTR, 2010		3RD QTR, 2010	
	HRGS	ORDS	HRGS	ORDS	HRGS	ORDS	HRGS	ORDS	HRGS	ORDS
ADOP/PAT	96	385	135	413	92	324	152	450	144	377
DOM. VIOL.	3	427	2	350	1	355	3	393	11	353
OTH. CIVIL	344	958	349	797	369	906	310	848	400	836
DOMESTIC	897	2685	922	2705	717	2428	809	2576	989	2558
PROB/GDN	1283	2514	1240	2226	1323	2327	1313	2688	1401	2533
SUBTOTAL	2623	6969	2648	6491	2502	6340	2587	6955	2945	6657
DAILY AVG.	43	114	43	106	41	104	42	114	48	109

SEATTLE VIA CLERK (starting Jan 2009)	3RD QTR, 2009		4TH QTR, 2009		1ST QTR, 2010		2ND QTR, 2010		3RD QTR, 2010	
	----	ORDS	----	ORDS	----	ORDS	----	ORDS	----	ORDS
ADOP/PAT	----	130	----	169	----	106	----	155	----	171
DOM. VIOL.	----	2	----	4	----	1	----	5	----	6
OTH. CIVIL	----	5735	----	6183	----	5847	----	5958	----	6248
DOMESTIC	----	562	----	806	----	916	----	992	----	973
PROB/GDN	----	662	----	606	----	663	----	696	----	638
SUBTOTAL	----	7091	----	7768	----	7533	----	7806	----	8036
DAILY AVG.	----	116	----	127	----	123	----	128	----	132

SEATTLE MAIL-IN	3RD QTR, 2009		4TH QTR, 2009		1ST QTR, 2010		2ND QTR, 2010		3RD QTR, 2010	
	----	ORDS	----	ORDS	----	ORDS	----	ORDS	----	ORDS
ADOP/PAT	----	8	----	1	----	3	----	4	----	3
DOM. VIOL.	----	1	----	0	----	0	----	1	----	0
OTH. CIVIL	----	732	----	272	----	257	----	264	----	259
DOMESTIC	----	37	----	15	----	44	----	34	----	55
PROB/GDN	----	101	----	64	----	81	----	119	----	95
SUBTOTAL	----	879	----	352	----	385	----	422	----	412
DAILY AVG.	----	14	----	6	----	6	----	7	----	7

EASTSIDE	3RD QTR, 2009		4TH QTR, 2009		1ST QTR, 2010		2ND QTR, 2010		3RD QTR, 2010	
	HRGS	ORDS	HRGS	ORDS	HRGS	ORDS	HRGS	ORDS	HRGS	ORDS
ADOP/PAT	----	3	----	0	----	0	----	0	----	0
DOM. VIOL.	----	0	----	0	----	1	----	0	----	1
OTH. CIVIL	----	2	----	0	----	2	----	1	----	0
DOMESTIC	----	2	----	0	----	0	----	0	----	0
PROB/GDN	----	1	----	0	----	0	----	0	----	0
SUBTOTAL	----	8	----	0	----	3	----	1	----	1
DAILY AVG.	----	1	----	0	----	0	----	0	----	0

Table 9 (cont). Ex Parte Activity

KENT	3RD QTR, 2009		4TH QTR, 2009		1ST QTR, 2010		2ND QTR, 2010		3RD QTR, 2010	
	HRGS	ORDS	HRGS	ORDS	HRGS	ORDS	HRGS	ORDS	HRGS	ORDS
ADOP/PAT	33	157	63	164	39	125	42	145	36	145
DOM. VIOL.	1	449	1	404	0	479	0	469	1	462
OTH. CIVIL	244	886	243	816	246	909	280	878	297	1055
DOMESTIC	464	1564	474	1592	422	1487	441	1545	413	1482
PROB/GDN	431	829	439	811	367	767	437	841	490	949
SUBTOTAL	1173	3885	1220	3787	1074	3767	1200	3878	1237	4093
DAILY AVG.	19	64	20	62	18	62	20	64	20	67

KENT VIA CLERK (starting Jan 2009)	3RD QTR, 2009		4TH QTR, 2009		1ST QTR, 2010		2ND QTR, 2010		3RD QTR, 2010	
	----	ORDS	----	ORDS	----	ORDS	----	ORDS	----	ORDS
ADOP/PAT	----	70	----	68	----	57	----	48	----	61
DOM. VIOL.	----	3	----	2	----	0	----	1	----	5
OTH. CIVIL	----	2904	----	2722	----	2999	----	3256	----	3867
DOMESTIC	----	269	----	352	----	388	----	424	----	466
PROB/GDN	----	207	----	212	----	224	----	213	----	231
SUBTOTAL	----	3453	----	3356	----	3668	----	3942	----	4630
DAILY AVG.	----	57	----	55	----	60	----	65	----	76

KENT MAIL-IN	3RD QTR, 2009		4TH QTR, 2009		1ST QTR, 2010		2ND QTR, 2010		3RD QTR, 2010	
	----	ORDS	----	ORDS	----	ORDS	----	ORDS	----	ORDS
ADOP/PAT	----	6	----	2	----	3	----	4	----	2
DOM. VIOL.	----	0	----	0	----	0	----	0	----	0
OTH. CIVIL	----	261	----	204	----	193	----	79	----	69
DOMESTIC	----	14	----	23	----	12	----	6	----	20
PROB/GDN	----	30	----	37	----	64	----	33	----	34
SUBTOTAL	----	311	----	266	----	272	----	122	----	125
DAILY AVG.	----	5	----	4	----	4	----	2	----	2

ALL SEATTLE KENT and EASTSIDE	3RD QTR, 2009		4TH QTR, 2009		1ST QTR, 2010		2ND QTR, 2010		3RD QTR, 2010	
	HRGS	ORDS	HRGS	ORDS	HRGS	ORDS	HRGS	ORDS	HRGS	ORDS
GRAND TOTAL	3796	22596	3868	22020	3576	21965	3787	23126	4182	23954
DAILY AVERAGE	62.2	370.4	63.4	361.0	58.6	360.1	62.1	379.1	68.6	392.7

Note: Ex Parte via Clerk started in January 2009.

Appendix Glossary and Definition

General Definition

Active Status

A case is active if it is not on suspense status (see Suspense Status).

Case

A case is defined as a filing with an assigned case number (or a case number plus a defendant connection code in pre-1990 criminal filings).

Completion

A case is completed when dispositive document is filed with the court following resolution.

Jury Trial

A hearing is reported as a jury trial if the jury is impaneled.

New Case

A new case is an original filing with new case number assigned.

Non-Jury Trial

A hearing is reported as a non-jury trial if an opening statement is made, waived, or reserved. A juvenile fact finding hearings is reported as a non-jury trial.

Pending Case

A case is defined as pending if it is unresolved and active (not in suspense).

Reactivated Case

A case returns to active status from suspense status during the reporting period.

Re-opened Cases

A case is re-opened if it has been previously completed but returns to the court for supplement or change of the original case resolution. A re-opened case does not have a new case number. Only resolved cases can be "re-opened". (Note: measurement not available as of July 1996. SCOMIS capacity may exist after conversion to DB2 in the future).

Resolution

A case is resolved if all issues in the complaint are fully adjudicated.

Suspended Case

A case is placed in suspense status from active status during the reporting period.

Suspense Status

A case is on suspense status if it is on warrant, appeal, stay, mediation, arbitration ("Deferred Prosecution" is not a suspense status, but is treated as a resolution).

Trial

A hearing set before a judge or jury in which all the issues in the case are meant to be resolved. A trial normally includes opening statements to the court or jury stating what the evidence will show, introduction of witnesses and exhibits for direct and cross examination, final arguments to the court or jury in which counsel argue both the evidence and the law, and judgment by the court or jury stating what the facts of the case are and what law applies to the facts. In a jury case, it also includes the selection of the jury. A trial can be held

for one or more cases. A single trial may be held to adjudicate more than one case (as defined above).

Post-resolution Modifications

In this report, we also report the post-resolution modifications for case type 3 (domestic) and 5 (paternity). These numbers are based on the tracks (DMOD and DTBA) opened after the original resolution date (i.e., if the track beginning date is after the resolution date).

Section I. Filing Activity

Additional Filings with Clerk

Filings with clerk without assigning a SCOMIS case number. This reporting category consists of search warrants, wire taps, extradition, oaths and orders pertaining to Pro Tem judge/commissioners/Court

Reporters/Bailiffs, and other "non-case" filings as recorded under 12050 system.

Annual Filings

Total number of new case filings during the calendar year (January 1 to December 31).

Adoption Cases

This reporting category includes the following "cause-of-action" codes within SCOMIS case type 5:

- Relinquishment (REL)
- Termination of Parent/Child Relationship (TER)
- Adoption (ADP)
- Miscellaneous (MSC)
- Name Change - Confidential (CHN)
- Initial Pre-Placement Report Filed with Clerk (PPR)

General Civil Cases

"General Civil" cases include all civil matters other than Domestic, Probate, Guardianship, Adoption, Paternity and appeals from courts of limited jurisdiction and "Matters Filed with Clerk". "General civil" cases include small claims as identified by the "Small Claim Track". This reporting category includes the following "cause-of-action" codes within SCOMIS case type 2:

- Administrative Law Review (ALR)
- Change of Name - Non-Confidential (CHN)
- Collection (COL)
- Commercial (COM)
- Condemnation (CON)
- Domestic Violence Protection (DVP)
- Emancipation of Minor (EOM)
- Foreclosure (FOR)
- Civil Harassment (HAR)
- Injunction (INJ)
- Other Malpractice (MAL)
- Medical Malpractice (MED)
- Meretricious Relationship (MER)
- Malicious Harassment (MHA)
- Miscellaneous (MSC)
- Minor Settlement (MST) - as of 10/1/96, under Guardianship
- Petition of Civil Commitment- Sexual Predator (PCC)
- Property Fairness (PFA)

- Personal Injury (PIN)
- Property Damage (PRP)
- Quiet Title (QT)
- Small Claims (LCA/LCI on “Small Claim Track”)
- Seizure of Property from the Commission of a Crime (SPC)
- Seizure of Property Resulting from a Crime (SPR)
- Tort Motor Vehicle (TMV)
- Tort Other (TTO)
- Unlawful Detainer (UND)
- Wrongful Death (WDE)
- Writ of Habeas Corpus (WHC)
- Miscellaneous Writ (WMW)
- Writ of Mandamus (WRM)
- Writ of Restitution (WRR)
- Writ of Review (WRV)

Civil RALJ Cases

Civil appeals from courts of limited jurisdiction (excluding small claims as identified by the “Small Claim Track”). Civil RALJ includes the following “cause-of-action” reporting categories:

- Lower Court Appeal - Civil and “Not a Small Claim”
- Lower Court Appeal - Infraction and “Not a Small Claim”

Note: The Civil RALJ cases are determined based on both SCOMIS “cause-of-action” code (LCA and LCI) within SCOMIS case type 2 and the “Small Claim Track”.

Criminal Cases (excl. RALJ)

Adult criminal cases, excluding appeals from courts of limited jurisdiction. This reporting category includes the following crime categories within SCOMIS case type 1:

- Homicide
- Sex Crime
- Robbery
- Assault
- Theft/Burglary
- Motor Vehicle Theft
- Controlled Substance
- Other Felony
- Others (Misdemeanor, Non-charge Case)

Criminal RALJ Cases

Criminal appeals from courts of limited jurisdiction. This reporting category includes all SCOMIS case type 1 cases that have an appeal from lower court field of “Yes”.

Domestic Cases

This reporting category includes the following “cause-of-action” codes within SCOMIS case type 3:

- Annulment – Invalidity (INV)
- Child Custody (CUS)
- Dissolution With Children Of The Marriage (DIC)
- Dissolution With No Children Of The Marriage (DIN)
- Dissolution of Domestic Partnership – With Children (DPC)
- Dissolution of Domestic Partnership – With No Children (DPN)
- Foreign Judgment (FJU)
- Invalidity – Domestic Partnership (INP)
- Mandatory Wage Assignment (MWA)
- Miscellaneous (MSC)
- Modification (MOD)
- Modification – Support Only (MDS)
- Out-Of-State Child Custody (OSC)
- Parenting Plan / Child Support (PPS)
- Reciprocal, Respondent In-County (RIC)
- Reciprocal, Respondent Out-of-County (ROC)
- Legal Separation (SEP)
- Legal Separation – Domestic Partnership (SPD)

Guardianship Cases

This reporting category includes the following “cause-of-action” codes within SCOMIS case type 4:

- Guardianship/Estate (G/E)
- Guardianship (GND)

- Limited Guardianship (LGD)
- Minor Settlement (MST)

Juvenile ARY/CHINS Cases

Juvenile dependency cases, excluding truancy cases and DEP cause code. This reporting category includes following “cause-of-action” codes within SCOMIS case type 7:

- Alternative Residential Placement (ARP)
- At-Risk Youth (ARY)
- Child in Need of Service (CNS)
- Termination (TER)

Juvenile Dependency Cases

This reporting category includes following “cause-of-action” codes within SCOMIS case type 7:

- Dependency (DEP)

Juvenile Offender Cases

This reporting category includes the following crime categories in SCOMIS case type 8:

- Homicide
- Sex Crime
- Robbery
- Assault
- Theft/Burglary
- Motor Vehicle Theft
- Controlled Substance
- Other Felony
- Others (Misdemeanor, Non-charge Case)

Juvenile Truancy Cases

Mandatory truancy filings started on 10/01/1995. This reporting category includes the following “cause-of-action” code within SCOMIS case type 7:

- Truancy (TRU)

Matters Filed with Clerk

Filings with clerk (case numbers assigned), but requiring little or no judicial action. This reporting category includes the following “cause-of-action” codes within SCOMIS case type 2:

- Abstract of Judgment (ABJ)
- Foreign Judgment (FJU)
- Tax Warrant (TAX)
- Transcripts of Judgment (TRJ)

Mental Illness Cases

This reporting category includes all “cause-of-action” codes within SCOMIS case type 6:

- Alcoholic Treatment (ALT)
- Mental Illness - Adult (MI)
- Mental Illness - Juvenile (MIJ)

Paternity Cases

This reporting category includes the following “cause-of-action” codes within SCOMIS case type 5:

- Modification (MOD)
- Paternity (PAT)
- Paternity/URESA/UIFSA (PUR)

Probate Cases

This reporting category includes the following “cause-of-action” codes within SCOMIS case type 4:

- Absentee (ABS)
- Disclaimer (DSC)
- Estate (EST)
- Foreign Will (FNW)
- Miscellaneous (MSC)
- Non-Probate Notice to Creditors (NNC)
- Will Only (WLL)

Total Cases

New cases with case numbers assigned, excluding “Matters Filed with Clerk” and “Additional Filings with Clerk”.

Year-to-Date Filings

Total number of new filings since the beginning of calendar year (January 1) to the end of reporting period.

Section II. Resolution Category

Adoption - Resolved by Trial

Court Decision after Non-Jury Trial (CDAT)

Adoption - Uncontested

Consolidated Case (CONS)
Uncontested Resolution (UNDS)

Adoption - Settlement/Dismissal

Closed by Court Order after a Hearing (CLCO)
Dismissal without Trial (DSM)
Dismissal after Non-Jury Trial Commencement (DAT)
Settled after Non-Jury Trial Commencement (SAT)
Settled by Parties/Agreed Judgment (STPR)

Adoption - Closure by Clerk

Dismissal/Closure by Clerk (DSCK)

Adoption - Others

Change of Venue/Jurisdiction (CHV)
Other Non-specified Resolutions

Civil - Resolved by Jury Trial

Jury Verdict after Trial (JVAT)

Civil - Resolved by Non-Jury Trial

Court Decision after Non-Jury Trial (CDAT)

Civil - Summary Judgment

Summary Judgment (SMJG)

Civil - Default/Uncontested

Consolidated Case (CONS)
Default Judgment (DFJG)
Uncontested Resolution (UNDS)

Civil - Arbitration

Settle by Arbitration (ARBA)

Civil - Settlement/Dismissal

Closed by Court Order after a Hearing (CLCO)
Dismissal after Non-Jury Trial (DAT)
Dismissal after Jury Trial (DJT)
Dismissal (DSM)
Settled after Non-Jury Trial Commencement (SAT)
Settled after Jury Trial Commencement (SJT)
Settled by Parties/Agreed Judgment (STPR)

Civil - Closure by Clerk

Dismissal/Closure by Clerk (DSCK)

Civil - Others

Transferred to Federal bankruptcy Court (BANK)
Change of Venue/Jurisdiction (CHV)
Other Non-specified Resolutions

Civil RALJ - RALJ Decision

Court Decision to Affirm Appeal/review (CDTA)
Court Decision to Modify Appeal/Review (CDTM)
Court Decision to Reverse Appeal/review (CDTR)

Civil RALJ - Dismissal

Dismissal and Remand of Appeal/Review (DSRM)

Civil RALJ - Others

Other Non-specified Resolutions

Comparison with Court Standard

Percentage of cases actually falling within the Court’s standard benchmark.

Court Standard

Benchmarks set by a state advisory committee and adopted by the court indicating percentage of cases to be resolved at certain age (in months, 1 month = 30 days as used in the Advisory Case Processing Time Standard as published in the Court Rule).

Court standard is based on timelines as suggested by State Advisory Committee. For a case type with no time standard, the standard for a similar case type is adopted if appropriate.

Criminal: 90% by 4 months, 98% by 6 months, 100% by 9 months.

Civil: 90% by 12 months, 98% by 18 months, 100% by 24 months.

Domestic: 90% by 8 months, 98% by 10 months, 100% by 14 months.

Probate/Guardianship: 90% by 8 months, 98% by 18 months, 100% by 36 months.

Adoption/Paternity: 90% by 8 months, 98% by 10 months, 100% by 14 months.

Mental Illness/Juvenile Truancy: No standard yet.

Juvenile Dependency: 90% by 8 months, 98% by 10 months, 100% by 14 months.

Juvenile Offender: 90% by 4 months, 98% by 6 months, 100% by 9 months.

Criminal RALJ/Civil RALJ: 90% by 4 months, 98% by 5 months, 100% by 6 months.

Criminal - Resolved by Jury Trial

Acquittal by Jury (AQJV)
Convicted - Jury Verdict after Trial (CVJV)

Criminal - Resolved by Non-Jury Trial

Acquittal by Court (AQCT)
Convicted - Court Decision after Non-Jury Trial (CVCT)

Criminal - Resolved by Guilty Plea

Guilty Plea (GP)
Guilty Plea after Non-Jury Trial Commencement (GPAT)
Guilty Plea after Jury Trial Commencement (GPJT)

Criminal - Dismissal

Dismissal after Non-Jury Trial Commencement (DAT)
Dismissal after Jury Trial Commencement (DJT)
Dismissal (DSM)

Criminal - Others

Change of Venue (CHV)
Consolidated Case (CONS)
Continued Order of Prosecution with Completion (CTOP)*
Deferred Prosecution (DFPD)
Dismissal/Closure by Clerk (DSCK)
Governor’s warrant (GW)
Not Guilty by Reason of Insanity (NGRI)
Uncontested Resolution (UNDS)
Waiver of Extradition (WE)
Other Non-specified Resolutions

* Note: For adult criminal cases, “CTOP” does not necessarily constitute resolution. An adult criminal case with a “CTOP” as resolution code is counted as a resolved case only if a completion code exists along with the “CTOP”. If the resolution code is CTOP and there is no completion code, then the case is treated as unresolved. The primary reason for combining “CTOP” with a completion code is to determine

resolution for drug court cases (CTOP is entered in the SCOMIS resolution field as soon as a defendant enrolls in Drug Court). This rule on “CTOP” applies to adult criminal cases only.

Criminal RALJ - RALJ Decision

Court Decision to Affirm Appeal/review (CDTA)
Court Decision to Modify Appeal/Review (CDTM)
Court Decision to Reverse Appeal/review (CDTR)

Criminal RALJ - Dismissal

Dismissal and Remand of Appeal/Review (DSRM)

Criminal RALJ - Others

Other Non-specified Resolutions

Domestic - Resolved by Trial

Court Decision after Non-Jury Trial (CDAT)

Domestic - Default/Uncontested

Consolidated Case (CONS)
Default Judgment (DFJG)
Uncontested Resolution (UNDS)

Domestic - Settlement/Dismissal

Settled by Arbitration (ARBA)
Closed by Court Order after a Hearing (CLCO)
Dismissal after Non-Jury Trial Commencement (DAT)
Dismissal (DSM)
Settled after Non-Jury Trial Commencement (SAT)
Settled by Parties/Agreed Judgment (STPR)

Domestic - Closure by Clerk

Dismissal/Closure by Clerk (DSCK)

Domestic - Others

Change of Venue/Jurisdiction (CHV)
Summary Judgment (SMJG)
Other Non-specified Resolutions

Guardianship - Guardian Appointed

Guardian Appointed (PRGA)

Guardianship - Dismissal

Closed by Court Order after a Hearing (CLCO)
Dismissal (DSM)

Guardianship - Closure by Clerk

Dismissal/Closure by Clerk (DSCK)

Guardianship - Others

Change of Venue/Jurisdiction (CHV)
Consolidated Case (CONS)
Uncontested Resolution (UNDS)
Other Non-specified Resolutions

Juvenile Dependency - Finding of Dependency

Approved Petition (APP)

Juvenile Dependency - Dismissal

Dismissal (DSM)

Juvenile Dependency - Others

Change of Venue/Jurisdiction (CHV)
Consolidated Case (CONS)
Transfer of Jurisdiction (TRJU)
Other Non-specified Resolutions

Juvenile Offender - Resolved by Trial

Acquittal by Court (AQCT)
Convicted - Court Decision after Adjudictory Hearing (CVCT)

Juvenile Offender - Resolved by Guilty Plea

Guilty Plea before Adjudictory Hearing Commencement (GP)
Guilty Plea after Adjudictory Hearing Commencement (GPAT)

Juvenile Offender - Dismissal

Dismissal after Adjudictory Hearing Commencement (DAT)
Dismissal (DSM)

Juvenile Offender - Others

Change of venue (CHV)
Dismissal/Closure by Clerk (DSCK)
Consolidated Case (CONS)

Continued Prosecution (CTOP)
Decline of Jurisdiction (DECL)
Uncontested Resolution (UNDS)
Other Non-specified Resolutions

Juvenile Truancy - Finding of Truancy

Approved Petition (APP)

Juvenile Truancy - Dismissal

Dismissal (DSM)

Juvenile Truancy - Others

Change of Venue (CHV)
Consolidated Case (CONS)
Transfer of Jurisdiction (TRJU)
Other Non-specified Resolutions

Mental Illness - Court Decision to Commit

Court Decision to Commit (CDTC)

Mental Illness - Closed by Court

Closed by Court (CLCO)

Mental Illness - Dismissal

Dismissal (DSM)

Mental Illness - Others

Change of Venue/Jurisdiction (CHV)
Uncontested Resolution (UNDS)
Other Non-specified Resolutions

Paternity - Resolved by Trial

Court Decision after Non-Jury Trial (CDAT)

Paternity - Summary Judgment

Summary Judgment (SMJG)

Paternity - Default/Uncontested

Consolidated Case (CONS)
Default Judgment (DFJG)
Uncontested Resolution (UNDS)

Paternity - Settlement/Dismissal

Settled by Arbitration (ARBA)
Closed by Court Order after a Hearing (CLCO)
Dismissal after Non-Jury Trial Commencement (DAT)
Dismissal (DSM)
Settled after Non-Jury Trial Commencement (SAT)
Settled by Partied/Agreed Judgment (STPR)

Paternity - Closure by Clerk

Dismissal/Closure by Clerk (DSCK)

Paternity - Others

Change of Venue (CHV)
Other Non-specified Resolutions

Percentile

Percent of cases resolved at a given age. For example, if resolved cases had a 98 percentile of 12 months, it means that 98% of the cases were resolved within the age of 12 months, or conversely 2% of the cases were resolved after 12 months, not counting suspense time.

Probate - Personal Representative Appointed

Non-Intervention Probate (NIP)
Personal Representative Appointed (PRGA)

Probate - Dismissal

Closed by Court Order after a Hearing (CLCO)
Dismissal (DSM)

Probate - Closure by Clerk

Dismissal/Closure by Clerk (DSCK)

Probate - Others

Change of Venue (CHV)
Consolidated Case (CONS)
Uncontested Resolution (UNDS)
Other Non-specified Resolutions

Backlogged Cases

Active pending cases with an age exceeding the court-adopted time standard for each specific case type (recommended by the State Advisory Committee, see definition for *Court Standard*).

Section III. Pending Caseload

Adjustment

Adjustment made because of vacating of resolutions, or change in suspense status between two reporting period.

End Pending

Total number of pending cases at the end of reporting period.

Previous Pending

Total number of pending cases at the beginning of reporting period.

Resolution Rate

Resolution rate is defined as the ratio of number of resolutions to number of new filings (i.e., number of resolutions divided by number of new filings) during the reporting period. The resolution rate measures the relative pace of resolution in relation to the pace of new filings. A resolution rate of greater than 1 indicates the number of resolutions exceeds the number of new filings.

On-review Status

Cases that have been resolved (post-resolution) but still need court resources for periodic review and other remaining outstanding issues.

Probate (EST), Paternity (PAT) and Dependency (DEP): Resolved and not completed (paternity or dependency established, but outstanding issues remain).

Guardianship (GDN,LGD,G/E): Resolved and on tracks of G1,G2,G3,GE or GD; Minor Settlement (MST): Resolved with a future hearing date.

Section IV. Age of Pending Cases

Case Age

The age of a case is the time (number of days) since the filing date, less any suspense time if applicable.

Median Age

The median age is the time that 50% of the cases are under and 50% are above the given age. For example, if pending cases have a median age of 12 months, it means that 50% of the pending cases are within the age of 12 months, and 50% of pending cases are over 12 months. The median age is more robust to cases with extreme age values than the average age.

Suspense Time

Time (days) that a case is on suspense status before its resolution. If a case has more than one suspense between filing and resolution, the suspense time is the total from all suspenses. Time on suspense status after resolution (e.g., appeals) is not counted.