

King County Superior Court
Criminal Department Statistical Report

November 2011

Department of Judicial Administration
Prepared by: Shiquan Liao, Ph.D., Statistician

Release date: December 20, 2011

Report #: CRM-2011-11

Terminology

Age of Pending Case

Time (days) from filing to resolution, less suspense time if applicable.

Age of Resolved Case

Time (days) from filing to resolution, less suspense time if applicable.

End Pending

Number of pending cases at the end of reporting period.

Net Change in Pending

The change in number of pending cases (end pending minus previous pending).

Pending Case

A case is defined as pending if it is unresolved and not on suspense status.

Previous Pending

Number of pending cases at the beginning of reporting period.

Reactivated Case

A case returns to active from suspense status during the reporting period.

Resolution

A case is resolved if all issues in the complaint are fully adjudicated. However, a drug court case is reported as resolved only when dispositive document is also filed (completed).

Resolution Category

Five resolution categories are used to report resolution of criminal cases: jury trial (CVJV, AQJV), non-jury trial (CVCT, AQCT), guilty plea (GP, GPAT, GPJT), dismissal (DSM), and other (all other resolution codes). For criminal RALJ cases, the resolution categories are: RALJ decision (CDTA, CDTM, CDTR), dismissal (DSRM), and others (any other resolution codes).

Suspended Case

A case is placed in suspense status (removing from active) during the reporting period.

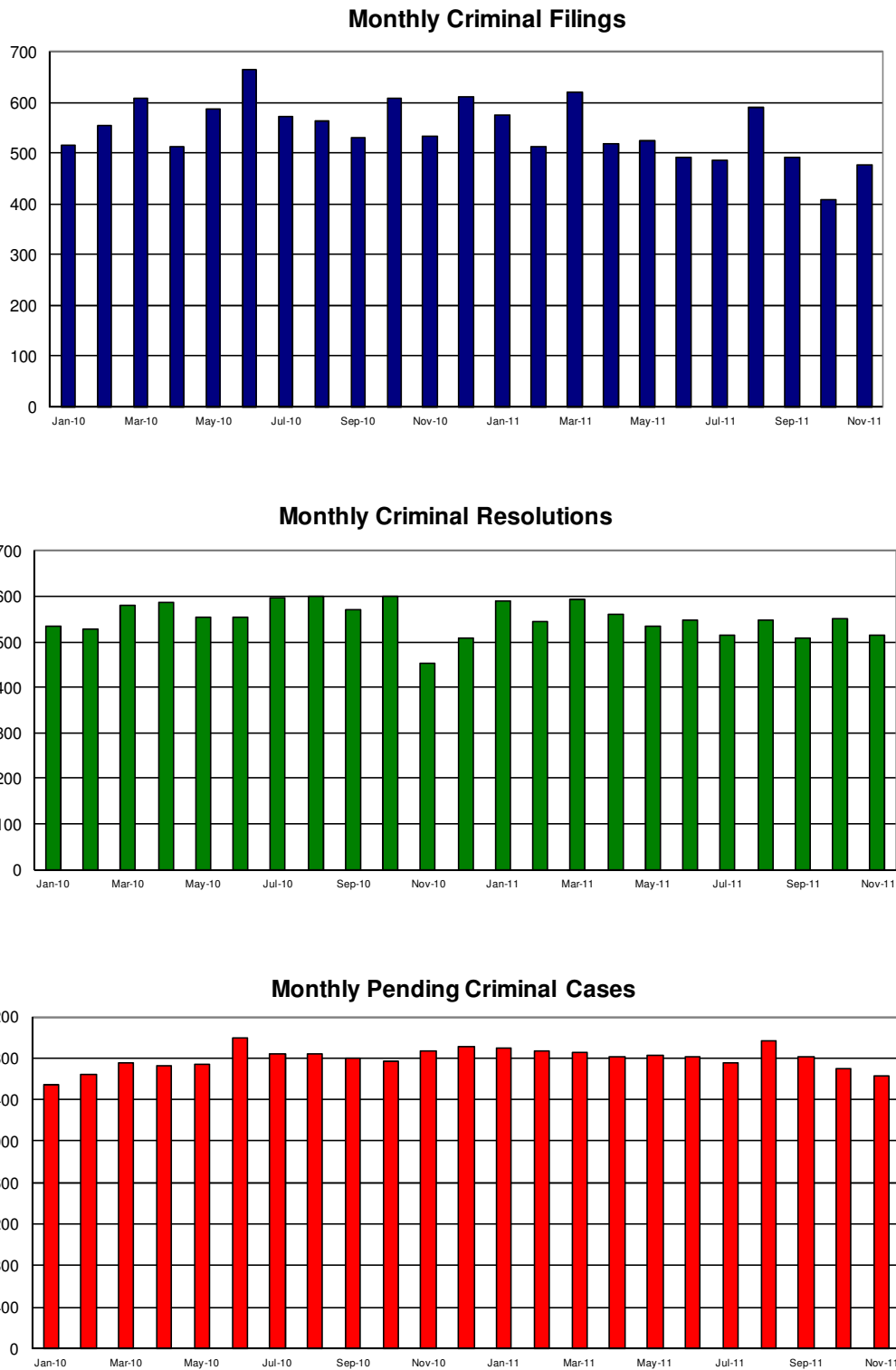
Suspense Status

A case is said to be on suspense status if it is on warrant or appeal.

Suspense Time

Time (days) a case is on suspense status.

Figure 1. Number of Criminal Filings, Resolutions and Pending Caseload by Month



Note: Starting January 2010, RALJ cases are included.

Figure 2. Crime Category as a Percentage of Total Filings by Year

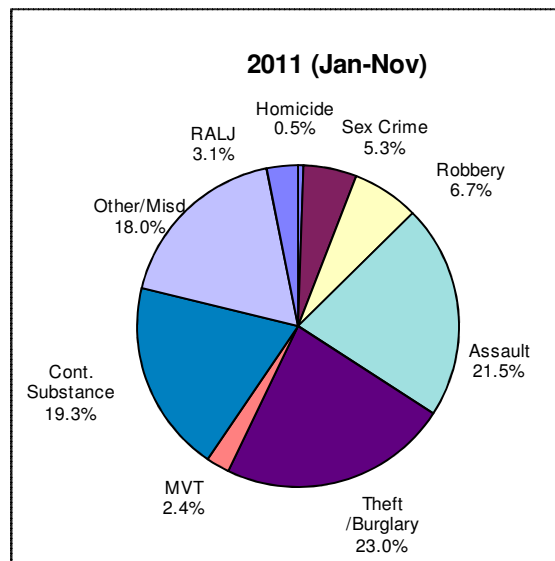
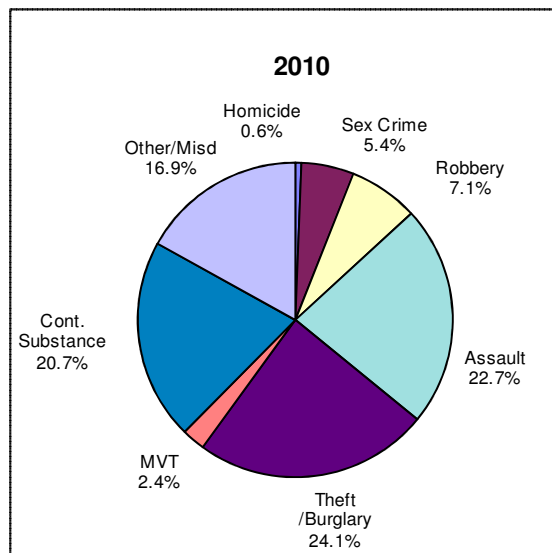
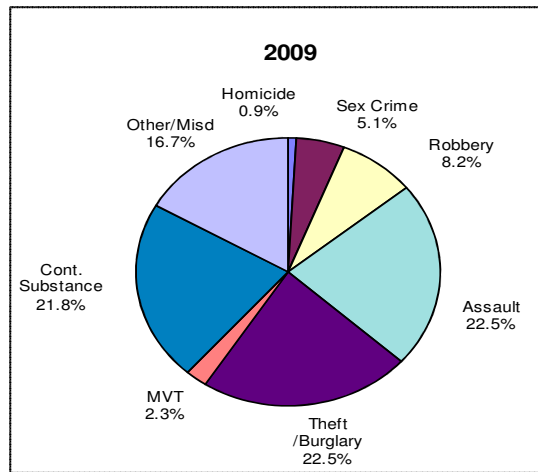


Table 1. Monthly Criminal New Filings by Crime Category ^(*)
King County Superior Court

	Jan	Feb	Mar	Apr	May	Jun	Jul	Aug	Sep	Oct	Nov	Dec	ADJ ⁽¹⁾	Annual
Total														
2009	548	561	566	606	501	606	577	487	515	582	422	520	(+17)	6498
2010	515	554	610	512	587	666	574	563	532	608	535	611	(0)	6867
2011 ⁽²⁾	576	513	620	518	525	492	486	590	491	409	478			
Total – DV Subset														
2009	NA	NA	NA	NA	NA	NA	NA	NA	NA	NA	NA	NA	NA	NA
2010	NA	NA	NA	NA	NA	NA	NA	NA	NA	NA	NA	NA	NA	NA
2011 ⁽²⁾	102	67	127	116	92	114	116	100	87	80	78			
Homicide														
2009	3	5	1	8	3	5	3	2	4	5	8	5	(+5)	57
2010	4	3	5	5	2	3	2	1	4	9	2	2	(0)	42
2011 ⁽²⁾	3	3	2	1	3	5	3	4	2	3	2			
Homicide – DV Subset														
2009	NA	NA	NA	NA	NA	NA	NA	NA	NA	NA	NA	NA	NA	NA
2010	NA	NA	NA	NA	NA	NA	NA	NA	NA	NA	NA	NA	NA	NA
2011 ⁽²⁾	1	1	0	0	0	1	0	4	2	2	0			
Sex Crime														
2009	44	37	56	42	30	61	42	31	58	35	20	32	(-156)	332
2010	31	32	27	24	36	37	39	39	28	19	21	28	(+3)	364
2011 ⁽²⁾	34	32	22	36	23	28	23	30	22	28	26			
Sex Crime – DV Subset														
2009	NA	NA	NA	NA	NA	NA	NA	NA	NA	NA	NA	NA	NA	NA
2010	NA	NA	NA	NA	NA	NA	NA	NA	NA	NA	NA	NA	NA	NA
2011 ⁽²⁾	6	4	2	4	3	3	0	4	2	7	3			
Robbery														
2009	47	64	43	38	44	45	38	38	50	37	34	35	(+19)	532
2010	54	43	58	42	34	39	32	35	37	33	23	48	(0)	478
2011 ⁽²⁾	50	27	58	29	25	35	23	36	30	34	36			
Robbery – DV Subset														
2009	NA	NA	NA	NA	NA	NA	NA	NA	NA	NA	NA	NA	NA	NA
2010	NA	NA	NA	NA	NA	NA	NA	NA	NA	NA	NA	NA	NA	NA
2011 ⁽²⁾	3	1	3	4	2	1	1	0	1	0	2			
Aggravated Assault														
2009	146	102	131	124	95	127	134	126	111	124	93	127	(+21)	1461
2010	107	122	125	117	119	138	139	133	136	132	115	137	(+26)	1546
2011 ⁽²⁾	105	84	139	105	108	126	126	117	118	98	101			
Aggravated Assault – DV Subset														
2009	NA	NA	NA	NA	NA	NA	NA	NA	NA	NA	NA	NA	NA	NA
2010	NA	NA	NA	NA	NA	NA	NA	NA	NA	NA	NA	NA	NA	NA
2011 ⁽²⁾	62	42	86	66	69	80	89	77	71	58	55			
Burglary/Theft /Larceny														
2009	145	137	142	127	104	137	126	107	107	120	98	103	(+10)	1463
2010	125	149	141	125	126	137	125	137	134	147	115	153	(+12)	1626
2011 ⁽²⁾	147	124	141	114	141	100	119	140	107	86	92			
Burglary/Theft /Larceny - DV Subset														
2009	NA	NA	NA	NA	NA	NA	NA	NA	NA	NA	NA	NA	NA	NA
2010	NA	NA	NA	NA	NA	NA	NA	NA	NA	NA	NA	NA	NA	NA
2011 ⁽²⁾	14	8	11	8	7	7	11	9	7	5	3			
Motor Vehicle Theft														
2009	17	14	16	11	10	5	20	7	12	16	13	12	(-2)	151
2010	9	8	12	10	10	17	13	13	17	21	13	18	(0)	161
2011 ⁽²⁾	14	20	12	9	5	9	12	18	12	10	13			
Motor Vehicle Theft – DV Subset														
2009	NA	NA	NA	NA	NA	NA	NA	NA	NA	NA	NA	NA	NA	NA
2010	NA	NA	NA	NA	NA	NA	NA	NA	NA	NA	NA	NA	NA	NA
2011 ⁽²⁾	1	0	0	0	0	0	1	2	1	0	1			

(*) The highest crime category in a case’s history is used to classify cases. For example, a case charged with homicide at any time in the case’s history is reported as a homicide regardless of whether the charge is reduced at resolution.

(1) “ADJ” = year-end adjustment.

(2) Reflects all documents received by 12/15/2011.

(3) DV Subset includes cases with a DV flag in at least one of the charges within the specific crime category at the time of the reporting.

Table 1 (cont.). Monthly Criminal New Filings by Crime Category ^(*)
King County Superior Court

	Jan	Feb	Mar	Apr	May	Jun	Jul	Aug	Sep	Oct	Nov	Dec	ADJ ⁽¹⁾	Annual
Controlled Substance														
2009	69	118	106	154	151	133	124	93	99	137	94	106	(+30)	1414
2010	80	86	127	98	154	188	124	91	74	115	130	115	(-2)	1380
2011 ⁽²⁾	120	108	107	99	104	97	65	120	100	82	99			
Controlled Substance - DV Subset														
2009	NA	NA	NA	NA	NA	NA	NA	NA	NA	NA	NA	NA	NA	NA
2010	NA	NA	NA	NA	NA	NA	NA	NA	NA	NA	NA	NA	NA	NA
2011 ⁽²⁾	0	0	0	0	0	0	0	0	0	0	1			
Others/Misdemeanor														
2009	77	84	71	102	64	93	90	83	74	108	62	100	(+90)	1088
2010	94	96	100	76	87	92	93	96	88	115	101	96	(-40)	1094
2011 ⁽²⁾	83	97	123	110	97	71	99	108	84	57	99			
Others/Misdemeanor - DV Subset														
2009	NA	NA	NA	NA	NA	NA	NA	NA	NA	NA	NA	NA	NA	NA
2010	NA	NA	NA	NA	NA	NA	NA	NA	NA	NA	NA	NA	NA	NA
2011 ⁽²⁾	13	11	25	38	11	22	14	8	5	7	13			
Criminal RALJ														
2009	16	8	11	7	22	23	14	13	19	16	12	19	(0)	180
2010	11	15	15	15	19	15	7	18	14	17	15	14	(0)	176
2011 ⁽²⁾	20	18	16	15	19	21	16	17	16	11	10			
RALJ - DV Subset														
2009	NA	NA	NA	NA	NA	NA	NA	NA	NA	NA	NA	NA	NA	NA
2010	NA	NA	NA	NA	NA	NA	NA	NA	NA	NA	NA	NA	NA	NA
2011 ⁽²⁾	2	0	0	0	0	0	0	0	0	0	0			
KNT Filing as % of Total														
2009	43%	41%	45%	41%	37%	38%	41%	40%	41%	45%	43%	40%		40%
2010	36%	40%	40%	39%	36%	38%	40%	36%	43%	39%	34%	41%		38%
2011 ⁽²⁾	40%	42%	46%	43%	44%	45%	44%	41%	43%	47%	41%			

(*) The highest crime category in a case's history is used to classify cases. For example, a case charged with homicide at any time in the case's history is reported as a homicide regardless of whether the charge is reduced at resolution.

(1) "ADJ" = year-end adjustment.

(2) Reflects all documents received by **12/15/2011**.

(3) DV Subset includes cases with a DV flag in at least one of the charges within the specific crime category at the time of the reporting.

Table 2. Monthly Criminal Case Resolutions by Crime Category
King County Superior Court

	Jan	Feb	Mar	Apr	May	Jun	Jul	Aug	Sep	Oct	Nov	Dec	ADJ ⁽¹⁾	Annual
Total														
2009	748	641	720	730	643	642	625	566	613	567	435	517	(+199)	7646
2010	535	528	582	587	554	556	597	601	570	599	454	510	(+70)	6743
2011 ⁽²⁾	590	546	595	560	536	549	514	547	508	552	514			
Total – DV Subset														
2009	NA	NA	NA	NA	NA	NA	NA	NA	NA	NA	NA	NA	NA	NA
2010	NA	NA	NA	NA	NA	NA	NA	NA	NA	NA	NA	NA	NA	NA
2011 ⁽²⁾	109	103	49	121	105	92	110	122	117	108	102			
Homicide														
2009	9	5	2	10	4	9	5	1	7	3	4	3	(+4)	66
2010	6	4	2	4	6	7	1	7	3	7	7	3	(0)	57
2011 ⁽²⁾	5	6	3	5	4	3	2	5	3	8	4			
Homicide – DV Subset														
2009	NA	NA	NA	NA	NA	NA	NA	NA	NA	NA	NA	NA	NA	NA
2010	NA	NA	NA	NA	NA	NA	NA	NA	NA	NA	NA	NA	NA	NA
2011 ⁽²⁾	0	0	0	0	1	1	0	1	0	0	0			
Sex Crime														
2009	36	48	48	44	43	37	52	41	44	32	26	28	(-142)	337
2010	27	30	25	20	32	32	32	22	34	22	27	26	(+4)	333
2011 ⁽²⁾	30	42	21	21	18	19	31	30	36	31	24			
Sex Crime – DV Subset														
2009	NA	NA	NA	NA	NA	NA	NA	NA	NA	NA	NA	NA	NA	NA
2010	NA	NA	NA	NA	NA	NA	NA	NA	NA	NA	NA	NA	NA	NA
2011 ⁽²⁾	7	7	4	9	1	2	4	5	4	3	3			
Robbery														
2009	33	33	52	43	37	49	42	29	47	50	34	42	(+23)	514
2010	27	39	35	58	55	25	55	43	36	42	38	27	(+3)	483
2011 ⁽²⁾	39	38	45	39	33	40	34	31	31	29	34			
Robbery – DV Subset														
2009	NA	NA	NA	NA	NA	NA	NA	NA	NA	NA	NA	NA	NA	NA
2010	NA	NA	NA	NA	NA	NA	NA	NA	NA	NA	NA	NA	NA	NA
2011 ⁽²⁾	0	1	1	3	0	3	0	1	1	0	2			
Aggravated Assault														
2009	120	117	146	119	112	144	128	114	129	113	98	117	(+54)	1511
2010	101	112	140	127	98	112	127	138	137	154	95	122	(+22)	1485
2011 ⁽²⁾	117	123	131	121	117	100	107	119	129	133	127			
Aggravated Assault – DV Subset														
2009	NA	NA	NA	NA	NA	NA	NA	NA	NA	NA	NA	NA	NA	NA
2010	NA	NA	NA	NA	NA	NA	NA	NA	NA	NA	NA	NA	NA	NA
2011 ⁽²⁾	73	73	35	76	69	62	77	88	90	92	74			
Burglary/Theft /Larceny														
2009	182	174	171	175	158	157	146	142	140	117	91	109	(+48)	1810
2010	115	107	137	140	123	124	114	151	112	115	92	109	(+17)	1456
2011 ⁽²⁾	122	120	128	129	150	135	112	131	106	151	125			
Burglary/Theft /Larceny – DV Subset														
2009	NA	NA	NA	NA	NA	NA	NA	NA	NA	NA	NA	NA	NA	NA
2010	NA	NA	NA	NA	NA	NA	NA	NA	NA	NA	NA	NA	NA	NA
2011 ⁽²⁾	11	6	3	9	13	8	8	9	9	5	10			
Motor Vehicle Theft														
2009	16	10	10	15	18	15	12	7	14	16	10	10	(+1)	154
2010	12	12	20	13	7	7	9	13	13	19	6	14	(0)	145
2011 ⁽²⁾	16	10	14	13	12	7	13	9	10	10	9			
Motor Vehicle Theft – DV Subset														
2009	NA	NA	NA	NA	NA	NA	NA	NA	NA	NA	NA	NA	NA	NA
2010	NA	NA	NA	NA	NA	NA	NA	NA	NA	NA	NA	NA	NA	NA
2011 ⁽²⁾	0	0	0	0	0	0	0	1	1	0	1			

The highest crime category in a case's history is used to classify cases. For example, a case charged with homicide at any time in the case's history is reported as a homicide regardless of whether the charge is reduced at resolution.

- (1) "ADJ" = year-end adjustment.
- (2) Reflects all documents received by 12/15/2011.
- (3) "Controlled Substance - Non Drug Court" are drug related cases that have never been accepted into drug court.
- (4) "Controlled Substance - Drug Court" are drug related cases that have been formally accepted into drug court (identified by "Order of Participation").
- (5) DV Subset includes cases with a DV flag in at least one of the charges within the specific crime category at the time of the reporting.

Table 2 (cont.). Monthly Criminal Case Resolutions by Crime Category
King County Superior Court

	Jan	Feb	Mar	Apr	May	Jun	Jul	Aug	Sep	Oct	Nov	Dec	ADJ ⁽¹⁾	Annual
Controlled Substance – Non Drug Court														
2009	187	121	164	143	128	127	125	129	117	131	84	113	(-28)	1597
2010	103	104	102	96	87	103	108	105	97	88	87	92	(+14)	1186
2011 ⁽²⁾	101	82	111	97	77	102	89	113	78	81	78			
Controlled Substance – Non Drug Court DV Subset														
2009	NA	NA	NA	NA	NA	NA	NA	NA	NA	NA	NA	NA	NA	NA
2010	NA	NA	NA	NA	NA	NA	NA	NA	NA	NA	NA	NA	NA	NA
2011 ⁽²⁾	0	0	1	0	1	0	0	0	1	0	0			
Drug Court														
2009	60	33	29	14	32	21	35	16	29	23	31	12	(0)	335
2010	43	14	24	30	34	36	34	23	18	24	15	5	(+2)	302
2011 ⁽²⁾	29	20	21	21	9	16	23	13	15	15	27			
Drug Court -DV Subset														
2009	NA	NA	NA	NA	NA	NA	NA	NA	NA	NA	NA	NA	NA	NA
2010	NA	NA	NA	NA	NA	NA	NA	NA	NA	NA	NA	NA	NA	NA
2011 ⁽²⁾	1	0	0	0	0	0	1	0	0	0	0			
Others/Misdemeanor														
2009	105	100	98	167	111	83	80	87	86	82	57	83	(+199)	1322
2010	85	82	83	87	101	86	99	84	97	98	78	90	(+8)	1078
2011 ⁽²⁾	111	91	105	100	104	107	88	81	83	80	72			
Others/Misdemeanor – DV Subset														
2009	NA	NA	NA	NA	NA	NA	NA	NA	NA	NA	NA	NA	NA	NA
2010	NA	NA	NA	NA	NA	NA	NA	NA	NA	NA	NA	NA	NA	NA
2011 ⁽²⁾	17	12	5	24	20	16	20	17	11	8	12			
Criminal RALJ														
2009	24	20	15	20	14	16	20	8	22	16	13	12	(-2)	198
2010	16	24	14	12	11	24	18	15	23	30	9	22	(0)	218
2011 ⁽²⁾	20	14	16	14	12	20	15	15	17	14	14			
RALJ - DV Subset														
2009	NA	NA	NA	NA	NA	NA	NA	NA	NA	NA	NA	NA	NA	NA
2010	NA	NA	NA	NA	NA	NA	NA	NA	NA	NA	NA	NA	NA	NA
2011 ⁽²⁾	0	2	0	0	0	0	0	0	0	0	0			
KNT Filing as % of Total														
2009	36%	38%	35%	34%	33%	46%	41%	40%	37%	42%	40%	36%		38%
2010	41%	44%	38%	36%	38%	39%	37%	37%	35%	37%	36%	37%		37%
2011 ⁽²⁾	38%	34%	37%	40%	40%	33%	34%	40%	42%	40%	41%			

The highest crime category in a case's history is used to classify cases. For example, a case charged with homicide at any time in the case's history is reported as a homicide regardless of whether the charge is reduced at resolution.

- (1) "ADJ" = year-end adjustment.
- (2) Reflects all documents received by **12/15/2011**.
- (3) "Controlled Substance - Non Drug Court" are drug related cases that have never been accepted into drug court.
- (4) "Controlled Substance - Drug Court" are drug related cases that have been formally accepted into drug court (identified by "Order of Participation").
- (5) DV Subset includes cases with a DV flag in at least one of the charges within the specific crime category at the time of the reporting.

Table 3. Number of Cases Resolved and Resolution Category
King County Superior Court

Crime Category (*)	Dec 2010	Jan 2011	Feb 2011	Mar 2011	Apr 2011	May 2011	Jun 2011	Jul 2011	Aug 2011	Sep 2011	Oct 2011	Nov 2011
Homicide	3	5	6	3	5	4	3	2	5	3	8	4
Resolved by Jury Trial	0	2	2	0	2	1	3	1	1	0	3	1
Resolved by Non-Jury Trial	0	0	0	0	0	0	0	0	0	0	0	0
Resolved by Guilty Plea	3	3	4	3	3	3	0	1	4	3	5	3
Dismissal	0	0	0	0	0	0	0	0	0	0	0	0
Others	0	0	0	0	0	0	0	0	0	0	0	0
Sex Crime	26	30	42	21	21	18	19	31	30	36	31	24
Resolved by Jury Trial	3	3	3	4	2	2	3	5	2	3	3	5
Resolved by Non-Jury Trial	0	0	0	0	0	0	0	0	0	0	0	0
Resolved by Guilty Plea	18	25	34	16	16	13	15	23	26	32	25	16
Dismissal	5	2	5	1	3	3	1	3	2	1	3	3
Others	0	0	0	0	0	0	0	0	0	0	0	0
Robbery	27	39	38	45	39	33	40	34	31	31	29	34
Resolved by Jury Trial	3	3	7	2	3	0	5	0	4	3	1	1
Resolved by Non-Jury Trial	1	0	0	0	0	0	0	0	0	1	0	0
Resolved by Guilty Plea	23	30	28	40	31	29	31	25	22	23	24	26
Dismissal	0	6	3	2	5	4	4	9	5	4	4	7
Others	0	0	0	1	0	0	0	0	0	0	0	0
Aggravated Assault	122	117	123	131	121	117	100	107	119	129	133	127
Resolved by Jury Trial	8	6	6	10	7	3	10	9	8	5	5	5
Resolved by Non-Jury Trial	1	1	1	0	0	3	1	0	0	1	0	0
Resolved by Guilty Plea	102	96	104	107	95	99	74	89	94	110	107	109
Dismissal	11	14	12	13	19	11	15	9	17	13	21	13
Others	0	0	0	1	0	1	0	0	0	0	0	0
Burglary/Theft/Larceny	109	122	120	128	129	150	135	112	131	106	151	125
Resolved by Jury Trial	5	0	7	6	1	2	6	3	6	3	2	6
Resolved by Non-Jury Trial	1	0	0	1	0	0	1	1	0	1	1	0
Resolved by Guilty Plea	97	105	96	103	107	133	100	101	113	91	131	111
Dismissal	6	17	17	18	21	15	19	7	12	11	17	8
Others	0	0	0	0	0	0	1	0	0	0	0	0
Motor Vehicle Theft	14	16	10	14	13	12	7	13	9	10	10	9
Resolved by Jury Trial	0	0	0	1	1	0	0	0	0	0	0	0
Resolved by Non-Jury Trial	0	0	0	0	0	0	0	0	0	0	0	0
Resolved by Guilty Plea	11	15	8	13	10	12	6	11	6	9	7	9
Dismissal	3	1	2	0	2	0	1	2	3	1	3	0
Others	0	0	0	0	0	0	0	0	0	0	0	0
Controlled Substance - Non Drug Court⁽¹⁾	92	101	82	111	97	77	102	89	113	78	81	78
Resolved by Jury Trial	2	3	2	1	1	0	3	3	3	3	2	4
Resolved by Non-Jury Trial	0	0	0	0	0	0	0	0	2	0	0	0
Resolved by Guilty Plea	68	78	63	93	81	61	81	74	83	65	68	65
Dismissal	22	20	17	17	14	16	18	12	25	10	11	9
Others	0	0	0	0	1	0	0	0	0	0	0	0
Drug Court⁽²⁾	5	29	20	21	21	9	16	23	13	15	15	27
Resolved by Non-Jury Trial	2	7	5	8	8	2	6	4	1	4	0	5
Resolved by Guilty Plea	2	2	0	0	3	2	0	2	5	2	3	2
Dismissal	1	22	15	13	10	5	10	17	7	9	12	20
Others	0	0	0	0	0	0	0	0	0	0	0	0
Others/Misdemeanor	90	111	91	105	100	104	107	88	81	83	80	72
Resolved by Jury Trial	3	2	4	3	2	2	1	4	2	2	3	2
Resolved by Non-Jury Trial	0	3	1	0	0	0	0	1	0	0	0	0
Resolved by Guilty Plea	70	83	69	68	75	79	87	61	56	58	55	49
Dismissal	14	18	16	32	22	22	17	18	20	21	20	20
Others	3	5	1	2	1	1	2	4	3	2	2	1
Criminal RALJ	22	20	14	16	14	12	20	15	15	17	14	14
RALJ Decision	18	14	7	7	12	7	15	9	8	16	10	12
Dismissal	4	6	5	3	2	4	3	5	7	1	4	2
Others	0	0	7	6	0	1	2	1	0	0	0	0

(*) The highest crime category in a case's history is used to classify cases.

Reflects all documents received by **12/15/2011**.

(1) "Controlled Substance - Non Drug Court" are drug related cases that have never been accepted into drug court.

(2) "Controlled Substance - Drug Court" are drug related cases that have been formally accepted into drug court (identified by "Order of Participation").

(3) DV Subset includes cases with a DV flag in at least one of the charges within the specific crime category at the time of the reporting.

Table 4. Age (days) of Resolved Cases
King County Superior Court

Crime Category ^(*)	Dec 2010	Jan 2011	Feb 2011	Mar 2011	Apr 2011	May 2011	Jun 2011	Jul 2011	Aug 2011	Sep 2011	Oct 2011	Nov 2011
Homicide ^(**)												
50% Cases Resolved by Day	523	396	316	301	375	334	2850	424	589	285	508	359
90% Cases Resolved by Day	735	663	616	355	1093	744	3928	562	1191	357	1082	505
Average Time (days)	442	377	304	237	558	400	2509	424	598	241	528	336
Sex Crime												
50% Cases Resolved by Day	165	249	199	223	245	209	198	205	210	267	232	202
90% Cases Resolved by Day	406	481	593	446	419	540	539	586	602	479	430	458
Average Time (days)	242	269	252	274	260	251	326	298	295	310	240	213
DV - Subset												
50% Cases Resolved by Day	NA	290	238	422	207	76	406	134	108	258	379	308
90% Cases Resolved by Day	NA	726	650	835	523	76	539	659	337	270	430	666
Average Time (days)	NA	323	280	415	271	76	406	243	163	249	358	360
Robbery												
50% Cases Resolved by Day	77	190	106	69	134	101	95	106	192	112	83	140
90% Cases Resolved by Day	307	473	361	175	329	319	235	258	308	276	216	274
Average Time (days)	124	221	147	111	157	127	129	135	175	151	110	154
Aggravated Assault												
50% Cases Resolved by Day	93	92	99	94	112	83	81	82	86	87	85	95
90% Cases Resolved by Day	273	236	207	236	248	222	283	240	273	246	232	249
Average Time (days)	135	134	113	121	133	107	119	107	135	121	115	136
DV - Subset												
50% Cases Resolved by Day	NA	85	87	83	100	67	73	77	73	78	82	76
90% Cases Resolved by Day	NA	222	205	242	224	192	261	253	311	225	192	246
Average Time (days)	NA	130	104	110	123	93	110	104	134	118	102	120
Burglary/Theft/Larceny												
50% Cases Resolved by Day	88	102	105	103	86	90	97	89	104	115	129	116
90% Cases Resolved by Day	237	232	234	285	244	236	259	291	309	314	345	286
Average Time (days)	124	161	158	142	120	126	129	136	175	197	184	164
DV - Subset												
50% Cases Resolved by Day	NA	89	66	110	44	68	66	114	77	57	78	100
90% Cases Resolved by Day	NA	226	155	391	99	119	111	167	209	234	185	191
Average Time (days)	NA	98	71	165	54	76	67	101	86	96	94	104
Motor Vehicle Theft												
50% Cases Resolved by Day	64	55	49	92	55	85	35	84	152	68	66	51
90% Cases Resolved by Day	95	141	421	400	154	180	93	165	403	135	289	280
Average Time (days)	62	75	122	191	91	103	51	91	130	74	116	95
Controlled Substance - Non Drug Court ⁽¹⁾												
50% Cases Resolved by Day	92	84	91	113	111	92	94	91	114	118	86	113
90% Cases Resolved by Day	216	213	232	301	262	197	318	232	253	400	237	300
Average Time (days)	124	116	120	158	141	109	174	113	197	161	114	151

(*) The highest crime category in a case's history is used to classify cases. For example, a case charged with homicide at any time during the case's history is reported as a homicide regardless of whether the charge is reduced at resolution.

(**) Due to small number of resolutions in this category, the age statistics for homicides are expected to vary considerably.

Reflects all documents received by 12/15/2011.

(1) "Controlled Substance - Non Drug Court" are drug related cases that have never been accepted into drug court.

(2) "Controlled Substance - Drug Court" are drug related cases that have been formally accepted into drug court (identified by "Order of Participation").

(3) DV Subset includes cases with a DV flag in at least one of the charges within the specific crime category at the time of the reporting.

Table 4 (cont.). Age (days) of Resolved Cases
King County Superior Court

Crime Category ^(*)	Dec 2010	Jan 2011	Feb 2011	Mar 2011	Apr 2011	May 2011	Jun 2011	Jul 2011	Aug 2011	Sep 2011	Oct 2011	Nov 2011
Drug Court ⁽²⁾												
50% Cases Resolved by Day	435	629	605	630	752	714	613	554	581	550	540	622
90% Cases Resolved by Day	784	1064	1118	1185	1050	2223	958	1244	4510	939	1318	1205
Average Time (days)	505	680	719	688	746	856	616	832	1478	592	726	732
Others/Misdemeanor												
50% Cases Resolved by Day	62	79	85	95	67	61	63	71	86	68	74	81
90% Cases Resolved by Day	242	211	223	482	188	205	213	308	326	334	266	173
Average Time (days)	118	104	120	280	93	100	226	153	426	156	115	95
DV - Subset												
50% Cases Resolved by Day	NA	126	78	160	59	58	66	63	86	56	94	71
90% Cases Resolved by Day	NA	244	120	376	178	178	210	142	245	149	131	163
Average Time (days)	NA	132	84	161	88	74	79	78	117	89	89	90
Criminal RALJ												
50% Cases Resolved by Day	248	232	231	208	246	213	254	266	266	245	245	264
90% Cases Resolved by Day	371	528	312	308	370	465	414	424	348	346	415	430
Average Time (days)	272	283	206	183	275	263	272	263	256	226	302	302

(*) The highest crime category in a case's history is used to classify cases. For example, a case charged with homicide at any time during the case's history is reported as a homicide regardless of whether the charge is reduced at resolution.

(**) Due to small number of resolutions in this category, the age statistics for homicides are expected to vary considerably.

Reflects all documents received by **12/15/2011**.

(1) "Controlled Substance - Non Drug Court" are drug related cases that have never been accepted into drug court.

(2) "Controlled Substance - Drug Court" are drug related cases that have been formally accepted into drug court (identified by "Order of Participation").

(3) DV Subset includes cases with a DV flag in at least one of the charges within the specific crime category at the time of the reporting.

Table 5. Pending Criminal Cases
King County Superior Court

Crime Category ^(*)	Nov 2010	Dec 2010	Jan 2011	Feb 2011	Mar 2011	Apr 2011	May 2011	Jun 2011	Jul 2011	Aug 2011	Sep 2011	Oct 2011	Nov 2011
Total													
Previous Pending	2773	2873	2917	2904	2871	2861	2812	2827	2815	2757	2979	2806	2699
New Filing (+)	535	611	576	513	620	518	525	492	486	590	491	409	478
Resolved (-)	454	510	590	546	595	560	536	549	514	547	508	552	514
End Pending	2873	2917	2904	2871	2861	2812	2827	2815	2757	2979	2806	2699	2629
End Pending- DV Subset	NA	NA	421	400	401	411	397	436	420	440	384	365	344
Homicide													
Previous Pending	52	53	52	47	43	45	42	41	43	46	46	46	42
New Filing (+)	2	2	3	3	2	1	3	5	3	4	2	3	2
Resolved (-)	7	3	5	6	3	5	4	3	2	5	3	8	4
End Pending	53	52	47	43	45	42	41	43	46	46	46	42	41
End Pending- DV Subset	NA	NA	5	5	6	6	5	4	5	4	4	5	6
Sex Crime													
Previous Pending	256	247	250	246	247	240	253	260	262	249	256	238	230
New Filing (+)	21	28	34	32	22	36	23	28	23	30	22	28	26
Resolved (-)	27	26	30	42	21	21	18	19	31	30	36	31	24
End Pending	247	250	246	247	240	253	260	262	249	256	238	230	229
End Pending- DV Subset	NA	NA	49	47	43	38	41	44	38	39	34	32	37
Robbery													
Previous Pending	166	159	172	171	172	172	177	170	168	157	173	165	171
New Filing (+)	23	48	50	27	58	29	25	35	23	36	30	34	36
Resolved (-)	38	27	39	38	45	39	33	40	34	31	31	29	34
End Pending	159	172	171	172	172	177	170	168	157	173	165	171	171
End Pending- DV Subset	NA	NA	4	3	3	3	5	4	4	4	4	4	3
Aggravated Assault													
Previous Pending	476	510	510	502	466	469	452	452	484	483	525	479	464
New Filing (+)	115	137	105	84	139	105	108	126	126	117	118	98	101
Resolved (-)	95	122	117	123	131	121	117	100	107	119	129	133	127
End Pending	510	500	502	466	469	452	452	484	483	525	479	464	438
End Pending- DV Subset	NA	NA	277	261	254	252	255	280	279	298	282	248	232
Burglary/Theft/Larceny													
Previous Pending	574	591	611	633	622	639	590	598	597	591	642	602	538
New Filing (+)	115	153	147	124	141	114	141	100	119	140	107	86	92
Resolved (-)	92	109	122	120	128	129	150	135	112	131	106	151	125
End Pending	591	611	633	622	639	590	598	597	591	642	602	538	516
End Pending- DV Subset	NA	NA	28	29	27	32	26	30	32	35	29	27	20
Motor Vehicle Theft													
Previous Pending	38	49	51	50	56	62	56	45	49	57	68	61	62
New Filing (+)	13	18	14	20	12	9	5	9	12	18	12	10	13
Resolved (-)	6	14	16	10	14	13	12	7	13	9	10	10	9
End Pending	49	51	50	56	62	56	45	49	57	68	61	62	60
End Pending- DV Subset	NA	NA	2	2	2	1	1	1	2	3	3	4	4
Controlled Substance - Non Drug Court ⁽¹⁾													
Previous Pending	463	494	498	507	516	480	473	487	461	441	468	439	424
Resolved (-)	87	92	101	82	111	97	77	102	89	113	78	81	78
End Pending	494	498	507	516	480	473	487	461	441	468	439	424	420
End Pending- DV Subset	NA	NA	2	2	1	1	1	0	1	1	0	0	1
Drug Court ⁽²⁾													
Previous Pending	246	247	253	242	241	237	235	252	252	238	245	252	258
New Filing (+)	11	14	18	20	19	20	24	19	9	19	18	23	15
Resolved (-)	15	5	29	20	21	21	9	16	23	13	15	15	27
End Pending	247	253	242	241	237	235	252	238	245	252	258	248	248
End Pending- DV Subset	NA	NA	2	2	2	3	1	3	2	3	4	4	4

(*) Information from filing to the reporting time is used to determine crime category for pending cases. The category for a case in this table is the highest crime category since filing. For example, a case initially charged with homicide is reported as a homicide regardless of whether or not the charge is reduced since filing. On the other hand, if the charge for a case is upgraded later, then the reporting category in later reports will reflect the upgraded (higher) crime category.

Reflects all documents received by **12/15/2011**. Drug court cases are identified by docket code "ORPAR" (Order for Participation).

DV Subset includes cases with a DV flag in at least one of the charges within the specific crime category at the time of the reporting.

Table 5 (Cont.). Pending Criminal Cases
King County Superior Court

Crime Category (*)	Nov 2010	Dec 2010	Jan 2011	Feb 2011	Mar 2011	Apr 2011	May 2011	Jun 2011	Jul 2011	Aug 2011	Sep 2011	Oct 2011	Nov 2011
Other/Misdemeanor													
Previous Pending	374	389	403	377	373	385	400	379	355	351	410	379	368
New Filing (+)	101	96	83	97	123	110	97	71	99	108	84	57	99
Resolved (-)	78	90	111	91	105	100	104	107	88	81	83	80	72
End Pending	389	403	377	373	385	400	379	355	351	410	379	368	368
End Pending- DV Subset	NA	NA	50	49	63	75	60	70	57	32	44	41	37
Criminal RALJ													
Previous Pending	128	134	127	129	133	132	134	143	144	144	146	145	142
New Filing (+)	15	14	20	18	16	15	19	21	16	17	16	11	10
Resolved (-)	9	22	20	14	16	14	12	20	15	15	17	14	14
End Pending	134	127	129	133	132	134	143	144	144	146	145	142	138
Total Pending Caseload													
SEA (%)	60%	59%	59%	58%	55%	56%	56%	54%	52%	53%	52%	51%	52%
KNT (%)	40%	41%	41%	42%	45%	44%	44%	46%	48%	47%	48%	49%	48%

(*) Information from filing to the reporting time is used to determine crime category for pending cases. The category for a case in this table is the highest crime category since filing. For example, a case initially charged with homicide is reported as a homicide regardless of whether or not the charge is reduced since filing. On the other hand, if the charge for a case is upgraded later, then the reporting category in later reports will reflect the upgraded (higher) crime category.

Reflects all documents received by **12/15/2011**. Drug court cases are identified by docket code "ORPAR" (Order for Participation).

DV Subset includes cases with a DV flag in at least one of the charges within the specific crime category at the time of the reporting.

Table 6. Age of Pending Criminal Cases
King County Superior Court

Crime Category (*)	Nov 2010	Dec 2010	Jan 2011	Feb 2011	Mar 2011	Apr 2011	May 2011	Jun 2011	Jul 2011	Aug 2011	Sep 2011	Oct 2011	Nov 2011
Total													
Age (days)													
Median (50 th percentile)	97	96	99	103	97	96	106	108	117	105	113	119	121
95 th percentile	686	683	652	662	568	559	548	561	568	547	565	592	583
# of Cases in Age Interval													
0 - 60 days (0 - 2 months)	1033	991	961	986	1031	953	919	914	814	1024	884	761	784
61-120 days (3 - 4 months)	597	651	716	643	595	658	662	588	600	602	574	605	524
121-180 days (5 - 6 months)	397	401	339	389	408	353	353	428	420	364	377	372	356
181-270 days (7 - 9 months)	336	367	391	351	323	329	353	337	363	404	389	356	353
> 270 days (> 9 months)	510	507	497	502	504	519	540	537	560	585	582	605	612
DV Subset - Age (days)													
Median (50 th percentile)	NA	NA	89	89	77	65	71	76	83	75	81	89	91
95 th percentile	NA	NA	412	440	450	472	460	485	506	497	480	511	531
# of Cases in Age Interval													
0 - 60 days (0 - 2 months)	NA	NA	161	173	175	199	167	182	175	191	153	134	131
61-120 days (3 - 4 months)	NA	NA	106	26	80	90	94	109	96	92	93	94	76
121-180 days (5 - 6 months)	NA	NA	52	33	50	29	45	60	52	60	46	42	51
181-270 days (7 - 9 months)	NA	NA	51	19	38	35	36	24	35	40	43	42	34
> 270 days (> 9 months)	NA	NA	51	42	58	58	55	61	62	57	49	53	52
Homicide													
Age (days)													
Median (50 th percentile)	259	272	293	308	289	288	237	239	245	205	222	240	252
95 th percentile	959	990	1021	1049	1080	1081	944	793	824	756	786	817	847
# of Cases in Age Interval													
0 - 60 days (0 - 2 months)	12	7	3	4	8	5	4	7	9	10	6	4	5
61-120 days (3 - 4 months)	2	6	11	6	0	4	7	4	4	7	8	8	5
121-180 days (5 - 6 months)	4	3	2	5	10	6	2	5	7	3	4	6	7
181-270 days (7 - 9 months)	10	10	6	4	3	5	9	9	7	6	8	6	6
> 270 days (> 9 months)	25	26	25	24	24	22	19	18	19	20	20	18	18
Sex Crime													
Age (days)													
Median (50 th percentile)	139	152	164	150	147	132	147	160	174	177	164	176	175
95 th percentile	671	618	638	629	554	580	551	577	593	603	614	645	675
# of Cases in Age Interval													
0 - 60 days (0 - 2 months)	43	45	49	63	59	55	61	51	38	51	42	47	46
61-120 days (3 - 4 months)	62	47	43	46	46	59	50	45	55	47	42	40	31
121-180 days (5 - 6 months)	50	56	43	33	28	38	41	50	39	31	44	33	39
181-270 days (7 - 9 months)	35	49	59	56	51	37	39	40	42	50	42	41	34
> 270 days (> 9 months)	57	53	52	49	56	64	69	76	75	77	68	69	79
DV Subset - Age (days)													
Median (50 th percentile)	NA	NA	189	173	197	215	239	178	224	240	315	256	224
95 th percentile	NA	NA	785	813	557	874	618	648	966	997	1027	1058	1088
# of Cases in Age Interval													
0 - 60 days (0 - 2 months)	NA	NA	9	4	6	5	7	7	3	4	1	3	9
61-120 days (3 - 4 months)	NA	NA	5	0	9	11	6	5	6	4	5	4	1
121-180 days (5 - 6 months)	NA	NA	8	6	3	1	7	11	5	2	4	4	5
181-270 days (7 - 9 months)	NA	NA	12	6	10	7	6	2	6	11	7	6	4
> 270 days (> 9 months)	NA	NA	15	11	15	14	15	19	18	18	17	15	18
Robbery													
Age (days)													
Median (50 th percentile)	106	87	84	73	80	81	85	99	119	91	94	96	93
95 th percentile	412	431	375	391	394	414	445	421	460	479	509	540	582
# of Cases in Age Interval													
0 - 60 days (0 - 2 months)	60	66	70	72	73	77	49	51	49	64	59	55	68
61-120 days (3 - 4 months)	25	30	42	44	38	41	55	50	30	37	37	42	34
121-180 days (5 - 6 months)	27	26	14	17	22	23	22	21	36	32	20	22	20
181-270 days (7 - 9 months)	20	23	22	19	17	15	20	22	18	13	20	21	19
> 270 days (> 9 months)	27	27	23	20	22	21	24	24	24	27	29	31	30

(*) The highest crime category since filing is used to classify cases. For example, a case initially charged with homicide is reported as a homicide regardless of whether or not the charge is reduced since filing. On the other hand, if the charge for a case is upgraded later, then the reporting category in later reports will reflect the upgraded (higher) crime category.

Reflects all documents received by 12/15/2011.

- (1) "Controlled Substance - Non Drug Court" are drug related cases that have never been accepted into drug court.
- (2) "Controlled Substance - Drug Court" are drug related cases that have been formally accepted into drug court (identified by "Order of Participation").
- (3) DV Subset includes cases with a DV flag in at least one of the charges within the specific crime category at the time of the reporting.

Table 6 (cont.). Age of Pending Criminal Cases
King County Superior Court

Crime Category (*)	Nov 2010	Dec 2010	Jan 2011	Feb 2011	Mar 2011	Apr 2011	May 2011	Jun 2011	Jul 2011	Aug 2011	Sep 2011	Oct 2011	Nov 2011
Aggravated Assault													
Age (days)													
Median (50 th percentile)	72	78	83	89	81	81	72	79	83	76	81	89	84
95 th percentile	343	339	327	356	373	403	411	388	411	405	435	466	496
# of Cases in Age Interval													
0 - 60 days (0 - 2 months)	224	206	190	174	197	196	191	203	191	225	193	176	173
61-120 days (3 - 4 months)	122	129	151	122	101	102	108	124	119	120	107	113	96
121-180 days (5 - 6 months)	65	71	65	77	77	56	54	59	65	70	68	58	61
181-270 days (7 - 9 months)	57	51	53	43	46	46	51	49	51	50	52	55	46
> 270 days (> 9 months)	42	43	43	50	48	52	48	49	57	60	59	62	62
DV Subset - Age (days)													
Median (50 th percentile)	NA	NA	81	85	79	62	69	70	75	62	66	77	72
95 th percentile	NA	NA	340	368	394	424	434	461	488	421	375	419	431
# of Cases in Age Interval													
0 - 60 days (0 - 2 months)	NA	NA	110	49	113	124	114	126	125	143	122	106	100
61-120 days (3 - 4 months)	NA	NA	74	21	49	52	62	72	67	64	59	65	57
121-180 days (5 - 6 months)	NA	NA	34	20	36	22	26	34	36	40	33	27	32
181-270 days (7 - 9 months)	NA	NA	33	10	23	21	24	18	19	20	25	26	22
> 270 days (> 9 months)	NA	NA	26	24	33	33	29	30	32	28	23	24	21
Burglary/Theft/Larceny													
Age (days)													
Median (50 th percentile)	71	80	84	82	79	91	93	85	91	91	98	99	111
95 th percentile	415	347	349	358	358	375	391	395	426	412	442	463	483
# of Cases in Age Interval													
0 - 60 days (0 - 2 months)	245	235	249	238	246	198	216	232	203	245	208	166	171
121-180 days (5 - 6 months)	161	184	174	159	169	163	149	126	150	150	137	146	116
61-120 days (3 - 4 months)	79	83	86	103	99	85	89	101	84	76	92	85	84
181-270 days (7 - 9 months)	55	59	65	64	65	79	82	74	81	93	79	69	70
> 270 days (> 9 months)	51	50	59	60	60	65	62	64	73	78	86	72	75
DV Subset - Age (days)													
Median (50 th percentile)	NA	NA	45	43	52	42	64	73	68	57	57	84	106
95 th percentile	NA	NA	349	377	129	159	190	220	251	230	260	291	440
# of Cases in Age Interval													
0 - 60 days (0 - 2 months)	NA	NA	16	7	17	20	11	11	15	19	16	9	4
61-120 days (3 - 4 months)	NA	NA	8	3	7	9	9	11	10	7	8	12	9
121-180 days (5 - 6 months)	NA	NA	1	0	2	2	4	6	2	6	3	3	5
181-270 days (7 - 9 months)	NA	NA	1	0	0	0	1	1	4	2	1	1	1
> 270 days (> 9 months)	NA	NA	2	2	1	1	1	1	1	1	1	2	1
Motor Vehicle Theft													
Age (days)													
Median (50 th percentile)	48	47	58	54	59	75	84	113	96	77	81	94	110
95 th percentile	303	310	235	263	266	296	327	357	388	313	335	320	373
# of Cases in Age Interval													
0 - 60 days (0 - 2 months)	31	28	26	30	33	20	13	15	20	30	23	21	16
61-120 days (3 - 4 months)	10	11	14	13	14	23	19	11	10	13	15	16	16
121-180 days (5 - 6 months)	4	7	5	5	10	4	7	15	15	6	6	8	9
181-270 days (7 - 9 months)	0	2	3	6	2	6	2	4	6	13	11	9	9
> 270 days (> 9 months)	4	3	2	2	3	3	4	4	6	6	6	8	10

(*) The highest crime category since filing is used to classify cases. For example, a case initially charged with homicide is reported as a homicide regardless of whether or not the charge is reduced since filing. On the other hand, if the charge for a case is upgraded later, then the reporting category in later reports will reflect the upgraded (higher) crime category.

Reflects all documents received by **12/15/2011**.

- (1) "Controlled Substance - Non Drug Court" are drug related cases that have never been accepted into drug court.
- (2) "Controlled Substance - Drug Court" are drug related cases that have been formally accepted into drug court (identified by "Order of Participation").
- (3) DV Subset includes cases with a DV flag in at least one of the charges within the specific crime category at the time of the reporting.

Table 6 (cont.) . Age of Pending Criminal Cases
King County Superior Court

Crime Category (*)	Nov 2010	Dec 2010	Jan 2011	Feb 2011	Mar 2011	Apr 2011	May 2011	Jun 2011	Jul 2011	Aug 2011	Sep 2011	Oct 2011	Nov 2011
Controlled Substance - Non Drug Court⁽¹⁾													
Age (days)	71	72	84	83	79	81	84	80	98	85	86	91	82
Median (50 th percentile)	429	445	398	346	304	351	358	385	413	439	472	500	526
95 th percentile													
# of Cases in Age Interval	223	212	195	208	194	183	189	186	141	185	172	144	164
0 - 60 days (0 - 2 months)	92	113	146	134	114	128	134	116	121	110	105	109	99
61-120 days (3 - 4 months)	90	66	37	58	73	61	49	68	78	60	55	60	42
121-180 days (5 - 6 months)	48	67	87	70	47	44	51	42	46	52	50	50	50
181-270 days (7 - 9 months)	41	40	42	46	52	57	64	49	55	61	57	61	65
> 270 days (> 9 months)													
Drug Court⁽²⁾													
Age (days)													
Median (50 th percentile)	519	508	493	442	412	397	385	404	416	415	416	406	399
95 th percentile	1241	1272	1253	1281	1362	1187	1209	1239	1249	1136	1163	1183	1146
# of Cases in Age Interval													
0 - 60 days (0 - 2 months)	0	0	0	1	1	2	0	0	0	0	1	2	1
61-120 days (3 - 4 months)	2	3	4	6	5	13	9	5	1	5	2	5	7
121-180 days (5 - 6 months)	12	8	7	12	17	13	20	24	14	10	15	15	11
181-270 days (7 - 9 months)	38	37	43	34	29	28	36	37	41	40	43	35	40
> 270 days (> 9 months)	195	205	188	188	185	179	187	186	182	190	191	201	189
Others/Misdemeanor													
Age (days)													
Median (50 th percentile)	76	75	84	75	66	67	72	88	95	78	75	95	106
95 th percentile	477	429	302	481	366	388	405	435	430	434	438	455	471
# of Cases in Age Interval													
0 - 60 days (0 - 2 months)	167	163	145	160	186	187	164	131	128	185	150	121	119
61-120 days (3 - 4 months)	86	101	104	86	82	94	95	90	81	75	88	98	91
121-180 days (5 - 6 months)	50	54	48	52	47	40	44	53	52	49	44	49	52
181-270 days (7 - 9 months)	36	38	33	31	33	36	32	35	39	50	49	41	43
> 270 days (> 9 months)	50	47	47	44	37	43	44	46	51	51	48	59	63
DV Subset - Age (days)													
Median (50 th percentile)	NA	NA	86	81	46	34	58	58	62	78	107	95	119
95 th percentile	NA	NA	272	300	262	257	306	318	384	380	410	441	513
# of Cases in Age Interval													
0 - 60 days (0 - 2 months)	NA	NA	17	12	36	47	31	35	28	21	11	12	14
61-120 days (3 - 4 months)	NA	NA	19	1	11	14	15	20	12	16	19	10	5
121-180 days (5 - 6 months)	NA	NA	8	6	9	4	5	6	6	10	5	8	8
181-270 days (7 - 9 months)	NA	NA	3	2	5	7	5	3	4	3	5	5	5
> 270 days (> 9 months)	NA	NA	3	2	2	3	4	6	7	6	4	6	5
Criminal RALJ													
Age (days)													
Median (50 th percentile)	145	128	123	130	140	134	131	139	136	136	136	149	159
95 th percentile	419	373	397	425	403	381	394	311	335	338	368	327	344
# of Cases in Age Interval													
0 - 60 days (0 - 2 months)	28	29	34	36	34	30	32	38	35	29	30	25	21
61-120 days (3 - 4 months)	35	27	27	27	26	31	36	28	29	38	33	28	29
121-180 days (5 - 6 months)	16	27	32	27	25	27	25	32	30	27	29	36	31
181-270 days (7 - 9 months)	37	31	20	24	30	33	31	25	32	37	35	29	36
> 270 days (> 9 months)	18	13	16	19	17	13	19	21	18	15	18	24	21

(*) The highest crime category since filing is used to classify cases. For example, a case initially charged with homicide is reported as a homicide regardless of whether or not the charge is reduced since filing. On the other hand, if the charge for a case is upgraded later, then the reporting category in later reports will reflect the upgraded (higher) crime category.

Reflects all documents received by 12/15/2011.

- (1) "Controlled Substance - Non Drug Court" are drug related cases that have never been accepted into drug court.
- (2) "Controlled Substance - Drug Court" are drug related cases that have been formally accepted into drug court (identified by "Order of Participation").
- (3) DV Subset includes cases with a DV flag in at least one of the charges within the specific crime category at the time of the reporting.

Table 7. Comparison between SEA/KNT: Filings, Resolutions, and Pending Caseload
King County Superior Court

	Dec 2010	Jan 2011	Feb 2011	Mar 2011	Apr 2011	May 2011	Jun 2011	Jul 2011	Aug 2011	Sep 2011	Oct 2011	Nov 2011 ⁽¹⁾
# of Criminal Judges ⁽²⁾												
SEA - # of Criminal Judges	15	15	15	15	15	15	15	15	15	15	15	15
KNT - # of Criminal Judges	7	7	7	7	7	7	7	7	7	7	7	7
SEA - Drug Court Judge	1	1	1	1	1	1	1	1	1	1	1	1
Total Filings												
SEA - # of Cases Filed	358	345	296	335	298	293	270	270	349	279	217	283
KNT - # of Cases Filed	253	231	217	285	220	232	222	216	241	212	192	195
SEA %	59%	60%	58%	54%	58%	56%	55%	56%	59%	57%	53%	59%
KNT %	41%	40%	42%	46%	42%	44%	45%	44%	41%	43%	47%	41%
SEA - # of Cases per Judge	22	22	19	21	20	18	17	17	22	17	14	18
KNT - # of Cases per Judge	36	33	31	41	31	33	32	31	34	30	27	28
Total Resolutions												
SEA - # of Cases Resolved	321	346	343	356	322	313	355	320	318	283	321	281
KNT - # of Cases Resolved	187	215	183	218	217	214	178	171	216	210	216	206
SEA - Drug Court Cases Resolved	4	23	15	17	13	8	15	19	12	11	11	21
KNT - Drug Court Cases Resolved	1	6	5	4	8	1	1	4	1	4	4	6
SEA %	63%	59%	63%	60%	58%	58%	65%	62%	58%	56%	58%	55%
KNT %	37%	36%	34%	37%	39%	40%	33%	33%	39%	41%	39%	40%
SEA - Drug Court %	1%	4%	3%	3%	2%	2%	3%	4%	2%	2%	2%	4%
KNT - Drug Court %	0%	1%	1%	1%	1%	0%	0%	1%	0%	1%	1%	1%
SEA - # of Cases per Judge	20	23	22	23	22	20	22	21	21	18	21	19
KNT - # of Cases per Judge	27	32	27	32	32	31	26	25	31	30	31	30
Total Pending												
SEA - # of Cases Pending	1523	1511	1471	1393	1380	1385	1339	1255	1401	1287	1205	1185
KNT - # of Cases Pending	1141	1151	1159	1221	1197	1190	1224	1264	1333	1267	1236	1196
SEA - Drug Court Cases Pending	200	188	190	185	183	187	181	168	173	175	176	168
KNT - Drug Court Cases Pending	53	54	51	52	52	65	71	70	72	77	82	80
SEA %	52%	52%	51%	49%	49%	49%	48%	46%	47%	46%	45%	45%
KNT %	39%	40%	40%	43%	43%	42%	43%	46%	45%	45%	46%	45%
SEA - Drug Court %	7%	6%	7%	6%	7%	7%	6%	6%	6%	6%	7%	6%
KNT - Drug Court %	2%	2%	2%	2%	2%	2%	3%	3%	3%	3%	3%	4%
SEA - # of Cases per Judge	108	106	104	99	104	98	95	89	98	91	86	85
KNT - # of Cases per Judge	170	172	173	183	178	179	185	191	201	192	188	182

(1) Reflects all documents received by 12/15/2011.

(2) The number of judges does not include RJC chief judge and the criminal chief judge at SEA.

Table 8. Drug Court Statistics

King County Superior Court

Categories	Dec 2010	Jan 2011	Feb 2011	Mar 2011	Apr 2011	May 2011	Jun 2011	Jul 2011	Aug 2011	Sep 2011	Oct 2011	Nov 2011
Referrals - Total	52	62	50	59	39	37	31	23	58	47	32	36
Directly from PA	35	50	37	38	25	24	23	17	43	28	21	34
From Mainstream	17	12	13	21	14	13	8	8	15	19	11	3
Arraignments in Drug Court ⁽¹⁾	21	34	30	31	25	20	25	13	20	30	24	26
GP in Drug Court ⁽²⁾	4	6	3	8	0	3	6	8	3	3	7	2
Return to mainstream ⁽³⁾	28	25	24	35	22	19	16	17	17	24	13	18
Opt-in ⁽⁴⁾	14	18	20	19	20	24	19	9	19	18	23	15
Graduations ⁽⁵⁾	1	22	15	13	10	5	10	17	7	9	12	20
Terminations ⁽⁶⁾	4	7	5	8	11	4	6	6	6	6	3	7

- (1) Arraignments held in drug court regardless opt-in status of the cases.
- (2) Guilty pleas entered in drug court before opt-in.
- (3) Referred to drug court but decision by court order to go to mainstream.
- (4) Opt-in reflects the court order of participation.
- (5) Graduations are dismissals of opted-in cases after the completion of program.
- (6) Terminations are cases that fail in drug court.