

King County Superior Court  
Criminal Department Statistical Report

February 2011

Department of Judicial Administration  
Prepared by: Shiquan Liao, Ph.D., Statistician

Release date: March 20, 2011

**Report #: CRM-2011-02**

## Terminology

### **Age of Pending Case**

Time (days) from filing to resolution, less suspense time if applicable.

### **Age of Resolved Case**

Time (days) from filing to resolution, less suspense time if applicable.

### **End Pending**

Number of pending cases at the end of reporting period.

### **Net Change in Pending**

The change in number of pending cases (end pending minus previous pending).

### **Pending Case**

A case is defined as pending if it is unresolved and not on suspense status.

### **Previous Pending**

Number of pending cases at the beginning of reporting period.

### **Reactivated Case**

A case returns to active from suspense status during the reporting period.

### **Resolution**

A case is resolved if all issues in the complaint are fully adjudicated. However, a drug court case is reported as resolved only when dispositive document is also filed (completed).

### **Resolution Category**

Five resolution categories are used to report resolution of criminal cases: jury trial (CVJV, AQJV), non-jury trial (CVCT, AQCT), guilty plea (GP, GPAT, GPJT), dismissal (DSM), and other (all other resolution codes). For criminal RALJ cases, the resolution categories are: RALJ decision (CDTA, CDTM, CDTR), dismissal (DSRM), and others (any other resolution codes).

### **Suspended Case**

A case is placed in suspense status (removing from active) during the reporting period.

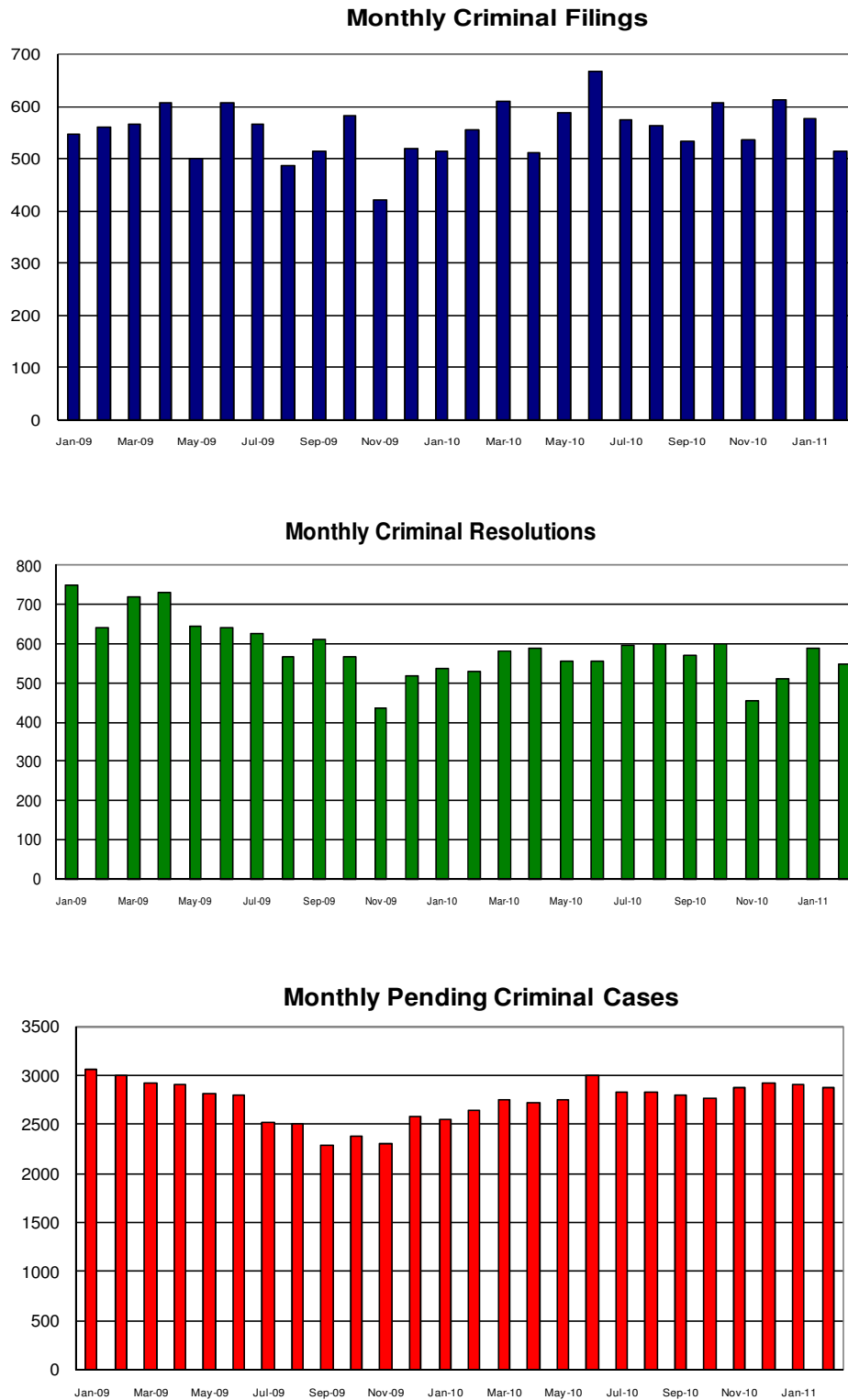
### **Suspense Status**

A case is said to be on suspense status if it is on warrant or appeal.

### **Suspense Time**

Time (days) a case is on suspense status.

Figure 1. Number of Criminal Filings, Resolutions and Pending Caseload by Month



Note: Starting January 2010, RALJ cases are included.

Figure 2. Crime Category as a Percentage of Total Filings by Year

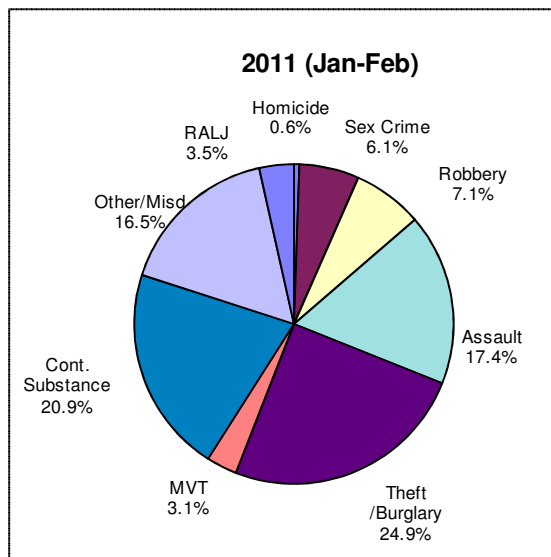
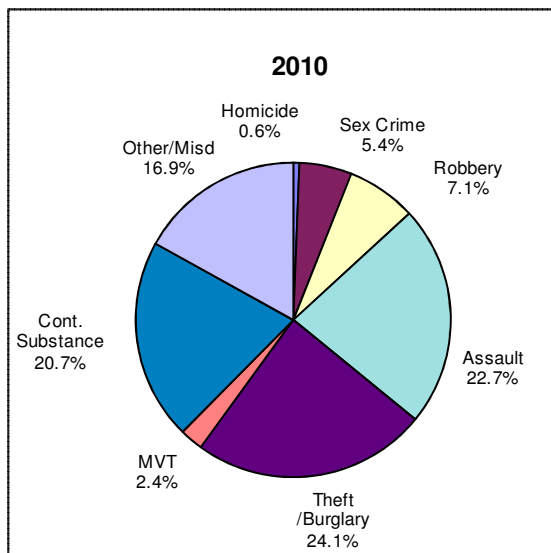
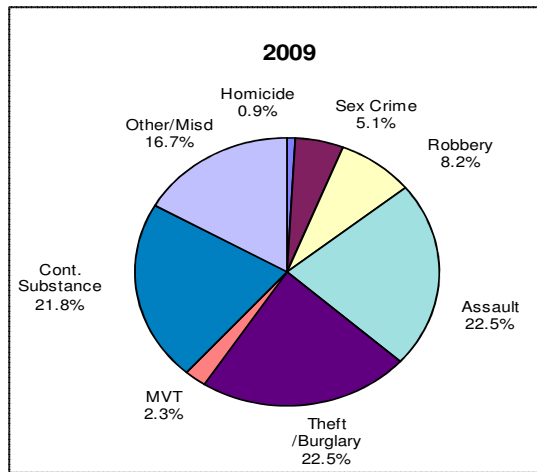


Table 1. Monthly Criminal New Filings by Crime Category (\*)  
King County Superior Court

	Jan	Feb	Mar	Apr	May	Jun	Jul	Aug	Sep	Oct	Nov	Dec	ADJ <sup>(1)</sup>	Annual
<b>Total</b>														
2009	548	561	566	606	501	606	577	487	515	582	422	520	(+17)	6498
2010	515	554	610	512	587	666	574	563	532	608	535	611	(0)	6867
2011 <sup>(2)</sup>	576	513												
<b>Total – DV Subset</b>														
2009	NA	NA	NA	NA	NA	NA	NA	NA	NA	NA	NA	NA	NA	NA
2010	NA	NA	NA	NA	NA	NA	NA	NA	NA	NA	NA	NA	NA	NA
2011 <sup>(2)</sup>	102	67												
<b>Homicide</b>														
2009	3	5	1	8	3	5	3	2	4	5	8	5	(+5)	57
2010	4	3	5	5	2	3	2	1	4	9	2	2	(0)	42
2011 <sup>(2)</sup>	3	3												
<b>Homicide – DV Subset</b>														
2009	NA	NA	NA	NA	NA	NA	NA	NA	NA	NA	NA	NA	NA	NA
2010	NA	NA	NA	NA	NA	NA	NA	NA	NA	NA	NA	NA	NA	NA
2011 <sup>(2)</sup>	1	1												
<b>Sex Crime</b>														
2009	44	37	56	42	30	61	42	31	58	35	20	32	(-156)	332
2010	31	32	27	24	36	37	39	39	28	19	21	28	(+3)	364
2011 <sup>(2)</sup>	34	32												
<b>Sex Crime – DV Subset</b>														
2009	NA	NA	NA	NA	NA	NA	NA	NA	NA	NA	NA	NA	NA	NA
2010	NA	NA	NA	NA	NA	NA	NA	NA	NA	NA	NA	NA	NA	NA
2011 <sup>(2)</sup>	6	4												
<b>Robbery</b>														
2009	47	64	43	38	44	45	38	38	50	37	34	35	(+19)	532
2010	54	43	58	42	34	39	32	35	37	33	23	48	(0)	478
2011 <sup>(2)</sup>	50	27												
<b>Robbery – DV Subset</b>														
2009	NA	NA	NA	NA	NA	NA	NA	NA	NA	NA	NA	NA	NA	NA
2010	NA	NA	NA	NA	NA	NA	NA	NA	NA	NA	NA	NA	NA	NA
2011 <sup>(2)</sup>	3	1												
<b>Aggravated Assault</b>														
2009	146	102	131	124	95	127	134	126	111	124	93	127	(+21)	1461
2010	107	122	125	117	119	138	139	133	136	132	115	137	(+26)	1546
2011 <sup>(2)</sup>	105	84												
<b>Aggravated Assault – DV Subset</b>														
2009	NA	NA	NA	NA	NA	NA	NA	NA	NA	NA	NA	NA	NA	NA
2010	NA	NA	NA	NA	NA	NA	NA	NA	NA	NA	NA	NA	NA	NA
2011 <sup>(2)</sup>	62	42												
<b>Burglary/Theft /Larceny</b>														
2009	145	137	142	127	104	137	126	107	107	120	98	103	(+10)	1463
2010	125	149	141	125	126	137	125	137	134	147	115	153	(+12)	1626
2011 <sup>(2)</sup>	147	124												
<b>Burglary/Theft /Larceny - DV Subset</b>														
2009	NA	NA	NA	NA	NA	NA	NA	NA	NA	NA	NA	NA	NA	NA
2010	NA	NA	NA	NA	NA	NA	NA	NA	NA	NA	NA	NA	NA	NA
2011 <sup>(2)</sup>	14	8												
<b>Motor Vehicle Theft</b>														
2009	17	14	16	11	10	5	20	7	12	16	13	12	(-2)	151
2010	9	8	12	10	10	17	13	13	17	21	13	18	(0)	161
2011 <sup>(2)</sup>	14	20												
<b>Motor Vehicle Theft – DV Subset</b>														
2009	NA	NA	NA	NA	NA	NA	NA	NA	NA	NA	NA	NA	NA	NA
2010	NA	NA	NA	NA	NA	NA	NA	NA	NA	NA	NA	NA	NA	NA
2011 <sup>(2)</sup>	1	0												

(\*) The highest crime category in a case's history is used to classify cases. For example, a case charged with homicide at any time in the case's history is reported as a homicide regardless of whether the charge is reduced at resolution.

(1) "ADJ" = year-end adjustment.

(2) Reflects all documents received by 03/15/2011.

(3) DV Subset includes cases with a DV flag in at least one of the charges within the specific crime category at the time of the reporting.

Table 1 (cont.). Monthly Criminal New Filings by Crime Category (\*)  
King County Superior Court

	Jan	Feb	Mar	Apr	May	Jun	Jul	Aug	Sep	Oct	Nov	Dec	ADJ <sup>(1)</sup>	Annual
<b>Controlled Substance</b>														
2009	69	118	106	154	151	133	124	93	99	137	94	106	(+30)	1414
2010	80	86	127	98	154	188	124	91	74	115	130	115	(-2)	1380
2011 <sup>(2)</sup>	120	108												
<b>Controlled Substance - DV Subset</b>														
2009	NA	NA	NA	NA	NA	NA	NA	NA	NA	NA	NA	NA	NA	NA
2010	NA	NA	NA	NA	NA	NA	NA	NA	NA	NA	NA	NA	NA	NA
2011 <sup>(2)</sup>	0	0												
<b>Others/Misdemeanor</b>														
2009	77	84	71	102	64	93	90	83	74	108	62	100	(+90)	1088
2010	94	96	100	76	87	92	93	96	88	115	101	96	(-40)	1094
2011 <sup>(2)</sup>	83	97												
<b>Others/Misdemeanor - DV Subset</b>														
2009	NA	NA	NA	NA	NA	NA	NA	NA	NA	NA	NA	NA	NA	NA
2010	NA	NA	NA	NA	NA	NA	NA	NA	NA	NA	NA	NA	NA	NA
2011 <sup>(2)</sup>	13	11												
<b>Criminal RALJ</b>														
2009	16	8	11	7	22	23	14	13	19	16	12	19	(0)	180
2010	11	15	15	15	19	15	7	18	14	17	15	14	(0)	176
2011 <sup>(2)</sup>	20	18												
<b>RALJ - DV Subset</b>														
2009	NA	NA	NA	NA	NA	NA	NA	NA	NA	NA	NA	NA	NA	NA
2010	NA	NA	NA	NA	NA	NA	NA	NA	NA	NA	NA	NA	NA	NA
2011 <sup>(2)</sup>	2	0												
<b>KNT Filing as % of Total</b>														
2009	43%	41%	45%	41%	37%	38%	41%	40%	41%	45%	43%	40%		40%
2010	36%	40%	40%	39%	36%	38%	40%	36%	43%	39%	34%	41%		38%
2011 <sup>(2)</sup>	40%	42%												

(\*) The highest crime category in a case's history is used to classify cases. For example, a case charged with homicide at any time in the case's history is reported as a homicide regardless of whether the charge is reduced at resolution.

(1) "ADJ" = year-end adjustment.

(2) Reflects all documents received by **03/15/2011**.

(3) DV Subset includes cases with a DV flag in at least one of the charges within the specific crime category at the time of the reporting.

Table 2. Monthly Criminal Case Resolutions by Crime Category  
King County Superior Court

	Jan	Feb	Mar	Apr	May	Jun	Jul	Aug	Sep	Oct	Nov	Dec	ADJ <sup>(1)</sup>	Annual
<b>Total</b>														
2009	748	641	720	730	643	642	625	566	613	567	435	517	(+199)	7646
2010	535	528	582	587	554	556	597	601	570	599	454	510	(+70)	6743
2011 <sup>(2)</sup>	590	546												
<b>Total – DV Subset</b>														
2009	NA	NA	NA	NA	NA	NA	NA	NA	NA	NA	NA	NA	NA	NA
2010	NA	NA	NA	NA	NA	NA	NA	NA	NA	NA	NA	NA	NA	NA
2011 <sup>(2)</sup>	109	103												
<b>Homicide</b>														
2009	9	5	2	10	4	9	5	1	7	3	4	3	(+4)	66
2010	6	4	2	4	6	7	1	7	3	7	7	3	(0)	57
2011 <sup>(2)</sup>	5	6												
<b>Homicide – DV Subset</b>														
2009	NA	NA	NA	NA	NA	NA	NA	NA	NA	NA	NA	NA	NA	NA
2010	NA	NA	NA	NA	NA	NA	NA	NA	NA	NA	NA	NA	NA	NA
2011 <sup>(2)</sup>	0	0												
<b>Sex Crime</b>														
2009	36	48	48	44	43	37	52	41	44	32	26	28	(-142)	337
2010	27	30	25	20	32	32	32	22	34	22	27	26	(+4)	333
2011 <sup>(2)</sup>	30	42												
<b>Sex Crime – DV Subset</b>														
2009	NA	NA	NA	NA	NA	NA	NA	NA	NA	NA	NA	NA	NA	NA
2010	NA	NA	NA	NA	NA	NA	NA	NA	NA	NA	NA	NA	NA	NA
2011 <sup>(2)</sup>	7	7												
<b>Robbery</b>														
2009	33	33	52	43	37	49	42	29	47	50	34	42	(+23)	514
2010	27	39	35	58	55	25	55	43	36	42	38	27	(+3)	483
2011 <sup>(2)</sup>	39	38												
<b>Robbery – DV Subset</b>														
2009	NA	NA	NA	NA	NA	NA	NA	NA	NA	NA	NA	NA	NA	NA
2010	NA	NA	NA	NA	NA	NA	NA	NA	NA	NA	NA	NA	NA	NA
2011 <sup>(2)</sup>	0	1												
<b>Aggravated Assault</b>														
2009	120	117	146	119	112	144	128	114	129	113	98	117	(+54)	1511
2010	101	112	140	127	98	112	127	138	137	154	95	122	(+22)	1485
2011 <sup>(2)</sup>	117	123												
<b>Aggravated Assault – DV Subset</b>														
2009	NA	NA	NA	NA	NA	NA	NA	NA	NA	NA	NA	NA	NA	NA
2010	NA	NA	NA	NA	NA	NA	NA	NA	NA	NA	NA	NA	NA	NA
2011 <sup>(2)</sup>	73	73												
<b>Burglary/Theft /Larceny</b>														
2009	182	174	171	175	158	157	146	142	140	117	91	109	(+48)	1810
2010	115	107	137	140	123	124	114	151	112	115	92	109	(+17)	1456
2011 <sup>(2)</sup>	122	120												
<b>Burglary/Theft /Larceny – DV Subset</b>														
2009	NA	NA	NA	NA	NA	NA	NA	NA	NA	NA	NA	NA	NA	NA
2010	NA	NA	NA	NA	NA	NA	NA	NA	NA	NA	NA	NA	NA	NA
2011 <sup>(2)</sup>	11	6												
<b>Motor Vehicle Theft</b>														
2009	16	10	10	15	18	15	12	7	14	16	10	10	(+1)	154
2010	12	12	20	13	7	7	9	13	13	19	6	14	(0)	145
2011 <sup>(2)</sup>	16	10												
<b>Motor Vehicle Theft – DV Subset</b>														
2009	NA	NA	NA	NA	NA	NA	NA	NA	NA	NA	NA	NA	NA	NA
2010	NA	NA	NA	NA	NA	NA	NA	NA	NA	NA	NA	NA	NA	NA
2011 <sup>(2)</sup>	0	0												

The highest crime category in a case's history is used to classify cases. For example, a case charged with homicide at any time in the case's history is reported as a homicide regardless of whether the charge is reduced at resolution.

- (1) "ADJ" = year-end adjustment.
- (2) Reflects all documents received by 03/15/2011.
- (3) "Controlled Substance - Non Drug Court" are drug related cases that have never been accepted into drug court.
- (4) "Controlled Substance - Drug Court" are drug related cases that have been formally accepted into drug court (identified by "Order of Participation").
- (5) DV Subset includes cases with a DV flag in at least one of the charges within the specific crime category at the time of the reporting.

Table 2 (cont.). Monthly Criminal Case Resolutions by Crime Category  
King County Superior Court

	Jan	Feb	Mar	Apr	May	Jun	Jul	Aug	Sep	Oct	Nov	Dec	ADJ <sup>(1)</sup>	Annual
<b>Controlled Substance – Non Drug Court</b>														
2009	187	121	164	143	128	127	125	129	117	131	84	113	(-28)	1597
2010	103	104	102	96	87	103	108	105	97	88	87	92	(+14)	1186
2011 <sup>(2)</sup>	101	82												
<b>Controlled Substance – Non Drug Court DV Subset</b>														
2009	NA	NA	NA	NA	NA	NA	NA	NA	NA	NA	NA	NA	NA	NA
2010	NA	NA	NA	NA	NA	NA	NA	NA	NA	NA	NA	NA	NA	NA
2011 <sup>(2)</sup>	0	0												
<b>Drug Court</b>														
2009	60	33	29	14	32	21	35	16	29	23	31	12	(0)	335
2010	43	14	24	30	34	36	34	23	18	24	15	5	(+2)	302
2011 <sup>(2)</sup>	29	20												
<b>Drug Court -DV Subset</b>														
2009	NA	NA	NA	NA	NA	NA	NA	NA	NA	NA	NA	NA	NA	NA
2010	NA	NA	NA	NA	NA	NA	NA	NA	NA	NA	NA	NA	NA	NA
2011 <sup>(2)</sup>	1	0												
<b>Others/Misdemeanor</b>														
2009	105	100	98	167	111	83	80	87	86	82	57	83	(+199)	1322
2010	85	82	83	87	101	86	99	84	97	98	78	90	(+8)	1078
2011 <sup>(2)</sup>	111	91												
<b>Others/Misdemeanor – DV Subset</b>														
2009	NA	NA	NA	NA	NA	NA	NA	NA	NA	NA	NA	NA	NA	NA
2010	NA	NA	NA	NA	NA	NA	NA	NA	NA	NA	NA	NA	NA	NA
2011 <sup>(2)</sup>	17	12												
<b>Criminal RALJ</b>														
2009	24	20	15	20	14	16	20	8	22	16	13	12	(-2)	198
2010	16	24	14	12	11	24	18	15	23	30	9	22	(0)	218
2011 <sup>(2)</sup>	20	14												
<b>RALJ - DV Subset</b>														
2009	NA	NA	NA	NA	NA	NA	NA	NA	NA	NA	NA	NA	NA	NA
2010	NA	NA	NA	NA	NA	NA	NA	NA	NA	NA	NA	NA	NA	NA
2011 <sup>(2)</sup>	0	2												
<b>KNT Filing as % of Total</b>														
2009	36%	38%	35%	34%	33%	46%	41%	40%	37%	42%	40%	36%		38%
2010	41%	44%	38%	36%	38%	39%	37%	37%	35%	37%	36%	37%		37%
2011 <sup>(2)</sup>	38%	34%												

The highest crime category in a case's history is used to classify cases. For example, a case charged with homicide at any time in the case's history is reported as a homicide regardless of whether the charge is reduced at resolution.

- (1) "ADJ" = year-end adjustment.
- (2) Reflects all documents received by **03/15/2011**.
- (3) "Controlled Substance - Non Drug Court" are drug related cases that have never been accepted into drug court.
- (4) "Controlled Substance - Drug Court" are drug related cases that have been formally accepted into drug court (identified by "Order of Participation").
- (5) DV Subset includes cases with a DV flag in at least one of the charges within the specific crime category at the time of the reporting.

Table 3. Number of Cases Resolved and Resolution Category  
King County Superior Court

Crime Category (*)	Mar 2010	Apr 2010	May 2010	Jun 2010	Jul 2010	Aug 2010	Sep 2010	Oct 2010	Nov 2010	Dec 2010	Jan 2011	Feb 2011
<b>Homicide</b>												
Resolved by Jury Trial	2	4	6	7	1	7	3	7	7	3	5	6
Resolved by Non-Jury Trial	0	3	1	2	0	5	0	3	1	0	2	2
Resolved by Guilty Plea	0	0	0	0	0	0	0	0	0	0	0	0
Dismissal	2	1	5	5	1	2	3	4	6	3	3	4
Others	0	0	0	0	0	0	0	0	0	0	0	0
<b>Sex Crime</b>	<b>25</b>	<b>20</b>	<b>32</b>	<b>32</b>	<b>32</b>	<b>22</b>	<b>34</b>	<b>22</b>	<b>27</b>	<b>26</b>	<b>30</b>	<b>42</b>
Resolved by Jury Trial	4	2	5	3	4	0	3	4	3	3	3	3
Resolved by Non-Jury Trial	0	0	0	1	25	0	2	0	0	0	0	0
Resolved by Guilty Plea	19	16	27	26	3	20	25	17	23	18	25	34
Dismissal	2	2	0	2	0	2	4	1	1	5	2	5
Others	0	0	0	0	0	0	0	0	0	0	0	0
<b>Robbery</b>	<b>35</b>	<b>58</b>	<b>55</b>	<b>25</b>	<b>55</b>	<b>43</b>	<b>36</b>	<b>42</b>	<b>38</b>	<b>27</b>	<b>39</b>	<b>38</b>
Resolved by Jury Trial	4	4	2	1	7	3	4	3	2	3	3	7
Resolved by Non-Jury Trial	0	0	1	0	0	0	0	0	0	1	0	0
Resolved by Guilty Plea	30	53	50	23	43	40	26	33	32	23	30	28
Dismissal	1	1	2	1	4	0	6	6	4	0	6	3
Others	0	0	0	0	1	0	0	0	0	0	0	0
<b>Aggravated Assault</b>	<b>140</b>	<b>127</b>	<b>98</b>	<b>112</b>	<b>127</b>	<b>138</b>	<b>137</b>	<b>154</b>	<b>95</b>	<b>122</b>	<b>117</b>	<b>123</b>
Resolved by Jury Trial	7	4	2	6	7	5	5	4	4	8	6	6
Resolved by Non-Jury Trial	1	0	0	0	0	1	0	2	1	1	1	1
Resolved by Guilty Plea	119	107	91	89	105	118	119	134	81	102	96	104
Dismissal	13	16	5	17	15	14	13	14	9	11	14	12
Others	0	0	0	0	0	0	0	0	0	0	0	0
<b>Burglary/Theft/Larceny</b>	<b>137</b>	<b>140</b>	<b>123</b>	<b>124</b>	<b>114</b>	<b>151</b>	<b>112</b>	<b>115</b>	<b>92</b>	<b>109</b>	<b>122</b>	<b>120</b>
Resolved by Jury Trial	7	4	4	2	3	3	3	4	3	5	0	7
Resolved by Non-Jury Trial	0	0	0	0	0	0	1	1	0	1	0	0
Resolved by Guilty Plea	102	118	99	103	102	132	100	98	81	97	105	96
Dismissal	28	18	20	19	9	16	8	12	8	6	17	17
Others	0	0	0	0	0	0	0	0	0	0	0	0
<b>Motor Vehicle Theft</b>	<b>20</b>	<b>13</b>	<b>7</b>	<b>7</b>	<b>9</b>	<b>13</b>	<b>13</b>	<b>19</b>	<b>6</b>	<b>14</b>	<b>16</b>	<b>10</b>
Resolved by Jury Trial	0	0	0	0	0	0	0	0	0	0	0	0
Resolved by Non-Jury Trial	0	0	0	0	0	0	0	0	0	0	0	0
Resolved by Guilty Plea	19	10	7	4	8	11	10	17	6	11	15	8
Dismissal	1	3	0	3	1	2	3	2	0	3	1	2
Others	0	0	0	0	0	0	0	0	0	0	0	0
<b>Controlled Substance - Non Drug Court<sup>(1)</sup></b>	<b>102</b>	<b>96</b>	<b>87</b>	<b>103</b>	<b>108</b>	<b>105</b>	<b>97</b>	<b>88</b>	<b>87</b>	<b>92</b>	<b>101</b>	<b>82</b>
Resolved by Jury Trial	4	2	4	3	5	4	1	1	4	2	3	2
Resolved by Non-Jury Trial	1	0	1	0	0	1	0	1	0	0	0	0
Resolved by Guilty Plea	81	81	70	83	86	84	79	71	73	68	78	63
Dismissal	16	13	12	17	17	16	17	15	10	22	20	17
Others	0	0	0	0	0	0	0	0	0	0	0	0
<b>Drug Court<sup>(2)</sup></b>	<b>24</b>	<b>30</b>	<b>34</b>	<b>36</b>	<b>34</b>	<b>23</b>	<b>18</b>	<b>24</b>	<b>15</b>	<b>5</b>	<b>29</b>	<b>20</b>
Resolved by Non-Jury Trial	7	12	14	16	7	5	8	3	4	2	7	5
Resolved by Guilty Plea	1	1	2	0	3	0	0	1	1	2	2	0
Dismissal	16	17	18	20	24	18	10	20	10	1	22	15
Others	0	0	0	0	0	0	0	0	0	0	0	0
<b>Others/Misdemeanor</b>	<b>83</b>	<b>87</b>	<b>101</b>	<b>86</b>	<b>99</b>	<b>84</b>	<b>97</b>	<b>98</b>	<b>78</b>	<b>90</b>	<b>111</b>	<b>91</b>
Resolved by Jury Trial	3	5	2	3	3	3	2	2	1	3	2	4
Resolved by Non-Jury Trial	1	0	1	1	0	0	0	0	1	0	3	1
Resolved by Guilty Plea	65	62	78	62	74	64	79	77	57	70	83	69
Dismissal	12	19	20	18	22	16	13	16	16	14	18	16
Others	2	1	0	2	0	1	3	3	3	3	5	1
<b>Criminal RALJ</b>	<b>14</b>	<b>12</b>	<b>11</b>	<b>24</b>	<b>18</b>	<b>15</b>	<b>23</b>	<b>30</b>	<b>9</b>	<b>22</b>	<b>20</b>	<b>14</b>
RALJ Decision	13	8	8	17	12	9	15	13	4	18	14	7
Dismissal	1	4	2	5	5	4	6	16	4	4	6	5
Others	0	0	1	2	1	2	2	1	1	0	0	7

(\*) The highest crime category in a case's history is used to classify cases.

Reflects all documents received by **03/15/2011**.

(1) "Controlled Substance - Non Drug Court" are drug related cases that have never been accepted into drug court.

(2) "Controlled Substance - Drug Court" are drug related cases that have been formally accepted into drug court (identified by "Order of Participation").

(3) DV Subset includes cases with a DV flag in at least one of the charges within the specific crime category at the time of the reporting.

Table 4. Age (days) of Resolved Cases  
King County Superior Court

Crime Category <sup>(*)</sup>	Mar 2010	Apr 2010	May 2010	Jun 2010	Jul 2010	Aug 2010	Sep 2010	Oct 2010	Nov 2010	Dec 2010	Jan 2011	Feb 2011
<b>Homicide <sup>(**)</sup></b>												
50% Cases Resolved by Day	450	619	187	329	533	459	181	388	308	523	396	316
90% Cases Resolved by Day	547	1050	788	661	533	522	470	897	5451	735	663	616
Average Time (days)	450	660	282	373	533	395	275	521	1037	442	377	304
<b>Sex Crime</b>												
50% Cases Resolved by Day	179	166	194	239	240	187	183	253	174	165	249	199
90% Cases Resolved by Day	420	488	589	460	665	414	412	490	333	406	481	593
Average Time (days)	233	236	263	282	523	341	226	282	212	242	269	252
<b>DV - Subset</b>												
50% Cases Resolved by Day	NA	NA	NA	NA	NA	NA	NA	NA	NA	NA	290	238
90% Cases Resolved by Day	NA	NA	NA	NA	NA	NA	NA	NA	NA	NA	726	650
Average Time (days)	NA	NA	NA	NA	NA	NA	NA	NA	NA	NA	323	280
<b>Robbery</b>												
50% Cases Resolved by Day	116	117	92	103	113	103	121	114	82	77	190	106
90% Cases Resolved by Day	295	289	231	323	359	243	309	298	239	307	473	361
Average Time (days)	131	142	111	129	151	132	140	140	114	124	221	147
<b>Aggravated Assault</b>												
50% Cases Resolved by Day	81	90	90	74	94	84	84	77	86	93	92	99
90% Cases Resolved by Day	243	300	283	188	274	218	188	214	252	273	236	207
Average Time (days)	117	130	123	95	129	123	97	105	121	135	134	113
<b>DV - Subset</b>												
50% Cases Resolved by Day	NA	NA	NA	NA	NA	NA	NA	NA	NA	NA	85	87
90% Cases Resolved by Day	NA	NA	NA	NA	NA	NA	NA	NA	NA	NA	222	205
Average Time (days)	NA	NA	NA	NA	NA	NA	NA	NA	NA	NA	130	104
<b>Burglary/Theft/Larceny</b>												
50% Cases Resolved by Day	64	85	75	95	94	90	93	93	92	88	102	105
90% Cases Resolved by Day	225	207	217	285	280	216	248	260	231	237	232	234
Average Time (days)	110	108	107	141	187	115	117	138	120	124	161	158
<b>DV - Subset</b>												
50% Cases Resolved by Day	NA	NA	NA	NA	NA	NA	NA	NA	NA	NA	89	66
90% Cases Resolved by Day	NA	NA	NA	NA	NA	NA	NA	NA	NA	NA	226	155
Average Time (days)	NA	NA	NA	NA	NA	NA	NA	NA	NA	NA	98	71
<b>Motor Vehicle Theft</b>												
50% Cases Resolved by Day	87	75	49	135	78	63	92	60	68	64	55	49
90% Cases Resolved by Day	183	152	205	593	272	120	147	126	319	95	141	421
Average Time (days)	105	99	94	194	98	68	92	72	103	62	75	122
<b>Controlled Substance - Non Drug Court <sup>(1)</sup></b>												
50% Cases Resolved by Day	97	80	83	97	79	82	91	82	86	92	84	91
90% Cases Resolved by Day	288	287	194	269	278	212	193	176	262	216	213	232
Average Time (days)	139	132	111	136	133	131	109	110	120	124	116	120

(\*) The highest crime category in a case's history is used to classify cases. For example, a case charged with homicide at any time during the case's history is reported as a homicide regardless of whether the charge is reduced at resolution.

(\*\*) Due to small number of resolutions in this category, the age statistics for homicides are expected to vary considerably.

Reflects all documents received by 03/15/2011.

(1) "Controlled Substance - Non Drug Court" are drug related cases that have never been accepted into drug court.

(2) "Controlled Substance - Drug Court" are drug related cases that have been formally accepted into drug court (identified by "Order of Participation").

(3) DV Subset includes cases with a DV flag in at least one of the charges within the specific crime category at the time of the reporting.

Table 4 (cont.). Age (days) of Resolved Cases  
King County Superior Court

Crime Category <sup>(*)</sup>	Mar 2010	Apr 2010	May 2010	Jun 2010	Jul 2010	Aug 2010	Sep 2010	Oct 2010	Nov 2010	Dec 2010	Jan 2011	Feb 2011
<b>Drug Court <sup>(2)</sup></b>												
50% Cases Resolved by Day	583	677	634	680	677	733	774	698	801	435	629	605
90% Cases Resolved by Day	1171	1147	1006	1017	1146	1086	1131	1117	1172	784	1064	1118
Average Time (days)	777	685	683	136	703	757	771	732	748	505	680	719
<b>Others/Misdemeanor</b>												
50% Cases Resolved by Day	70	70	69	96	70	79	70	77	75	62	79	85
90% Cases Resolved by Day	262	292	197	464	211	274	304	312	238	242	211	223
Average Time (days)	137	114	89	620	117	191	197	347	97	118	104	120
<b>DV - Subset</b>												
50% Cases Resolved by Day	NA	NA	NA	NA	NA	NA	NA	NA	NA	NA	126	78
90% Cases Resolved by Day	NA	NA	NA	NA	NA	NA	NA	NA	NA	NA	244	120
Average Time (days)	NA	NA	NA	NA	NA	NA	NA	NA	NA	NA	132	84
<b>Criminal RALJ</b>												
50% Cases Resolved by Day	281	300	235	310	317	218	308	255	459	248	232	231
90% Cases Resolved by Day	598	353	452	504	538	421	431	396	669	371	528	312
Average Time (days)	376	294	298	332	303	266	313	289	387	272	283	206

(\*) The highest crime category in a case's history is used to classify cases. For example, a case charged with homicide at any time during the case's history is reported as a homicide regardless of whether the charge is reduced at resolution.

(\*\*) Due to small number of resolutions in this category, the age statistics for homicides are expected to vary considerably.

Reflects all documents received by **03/15/2011**.

- (1) "Controlled Substance - Non Drug Court" are drug related cases that have never been accepted into drug court.
- (2) "Controlled Substance - Drug Court" are drug related cases that have been formally accepted into drug court (identified by "Order of Participation").
- (3) DV Subset includes cases with a DV flag in at least one of the charges within the specific crime category at the time of the reporting.

Table 5. Pending Criminal Cases  
King County Superior Court

Crime Category <sup>(*)</sup>	Feb 2010	Mar 2010	Apr 2010	May 2010	Jun 2010	Jul 2010	Aug 2010	Sep 2010	Oct 2010	Nov 2010	Dec 2010	Jan 2011	Feb 2011
<b>Total</b>													
Previous Pending	2550	2646	2755	2726	2748	2998	2834	2834	2801	2773	2873	2917	2904
New Filing (+)	554	610	512	587	666	574	563	532	608	535	611	576	513
Resolved (-)	528	582	587	554	556	597	601	570	599	454	510	590	546
<b>End Pending</b>	<b>2646</b>	<b>2755</b>	<b>2726</b>	<b>2748</b>	<b>2998</b>	<b>2834</b>	<b>2834</b>	<b>2801</b>	<b>2773</b>	<b>2873</b>	<b>2917</b>	<b>2904</b>	<b>2871</b>
<b>End Pending- DV Subset</b>	<b>NA</b>	<b>NA</b>	<b>NA</b>	<b>NA</b>	<b>NA</b>	<b>NA</b>	<b>NA</b>	<b>NA</b>	<b>NA</b>	<b>NA</b>	<b>NA</b>	<b>421</b>	<b>400</b>
<b>Homicide</b>													
Previous Pending	61	61	66	66	60	59	59	55	54	52	53	52	47
New Filing (+)	3	5	5	2	3	2	1	4	9	2	2	3	3
Resolved (-)	4	2	4	6	7	1	7	3	7	7	3	5	6
<b>End Pending</b>	<b>61</b>	<b>66</b>	<b>66</b>	<b>60</b>	<b>59</b>	<b>59</b>	<b>55</b>	<b>54</b>	<b>52</b>	<b>53</b>	<b>52</b>	<b>47</b>	<b>43</b>
<b>End Pending- DV Subset</b>	<b>NA</b>	<b>NA</b>	<b>NA</b>	<b>NA</b>	<b>NA</b>	<b>NA</b>	<b>NA</b>	<b>NA</b>	<b>NA</b>	<b>NA</b>	<b>NA</b>	<b>5</b>	<b>5</b>
<b>Sex Crime</b>													
Previous Pending	230	227	239	227	222	241	238	263	258	256	247	250	246
New Filing (+)	32	27	24	36	37	39	39	28	19	21	28	34	32
Resolved (-)	30	25	20	32	32	32	22	34	22	27	26	30	42
<b>End Pending</b>	<b>227</b>	<b>239</b>	<b>227</b>	<b>222</b>	<b>241</b>	<b>238</b>	<b>263</b>	<b>258</b>	<b>256</b>	<b>247</b>	<b>250</b>	<b>246</b>	<b>247</b>
<b>End Pending- DV Subset</b>	<b>NA</b>	<b>NA</b>	<b>NA</b>	<b>NA</b>	<b>NA</b>	<b>NA</b>	<b>NA</b>	<b>NA</b>	<b>NA</b>	<b>NA</b>	<b>NA</b>	<b>49</b>	<b>47</b>
<b>Robbery</b>													
Previous Pending	168	182	203	196	176	204	173	167	170	166	159	172	171
New Filing (+)	43	58	42	34	39	32	35	37	33	23	48	50	27
Resolved (-)	39	35	58	55	25	55	43	36	42	38	27	39	38
<b>End Pending</b>	<b>182</b>	<b>203</b>	<b>196</b>	<b>176</b>	<b>204</b>	<b>173</b>	<b>167</b>	<b>170</b>	<b>166</b>	<b>159</b>	<b>172</b>	<b>171</b>	<b>172</b>
<b>End Pending- DV Subset</b>	<b>NA</b>	<b>NA</b>	<b>NA</b>	<b>NA</b>	<b>NA</b>	<b>NA</b>	<b>NA</b>	<b>NA</b>	<b>NA</b>	<b>NA</b>	<b>NA</b>	<b>4</b>	<b>3</b>
<b>Aggravated Assault</b>													
Previous Pending	441	451	463	455	472	520	504	500	514	476	510	510	502
New Filing (+)	122	125	117	119	138	139	133	136	132	115	137	105	84
Resolved (-)	112	114	127	98	112	127	138	137	154	95	122	117	123
<b>End Pending</b>	<b>451</b>	<b>463</b>	<b>455</b>	<b>472</b>	<b>520</b>	<b>504</b>	<b>500</b>	<b>514</b>	<b>476</b>	<b>510</b>	<b>500</b>	<b>502</b>	<b>466</b>
<b>End Pending- DV Subset</b>	<b>NA</b>	<b>NA</b>	<b>NA</b>	<b>NA</b>	<b>NA</b>	<b>NA</b>	<b>NA</b>	<b>NA</b>	<b>NA</b>	<b>NA</b>	<b>NA</b>	<b>277</b>	<b>261</b>
<b>Burglary/Theft/Larceny</b>													
Previous Pending	432	505	507	503	524	557	537	531	544	574	591	611	633
New Filing (+)	149	141	125	126	137	125	137	134	147	115	153	147	124
Resolved (-)	107	137	140	123	124	114	151	112	115	92	109	122	120
<b>End Pending</b>	<b>505</b>	<b>507</b>	<b>503</b>	<b>524</b>	<b>557</b>	<b>537</b>	<b>531</b>	<b>544</b>	<b>574</b>	<b>591</b>	<b>611</b>	<b>633</b>	<b>622</b>
<b>End Pending- DV Subset</b>	<b>NA</b>	<b>NA</b>	<b>NA</b>	<b>NA</b>	<b>NA</b>	<b>NA</b>	<b>NA</b>	<b>NA</b>	<b>NA</b>	<b>NA</b>	<b>NA</b>	<b>28</b>	<b>29</b>
<b>Motor Vehicle Theft</b>													
Previous Pending	33	34	29	27	28	41	44	43	40	38	49	51	50
New Filing (+)	8	12	10	10	17	13	13	17	21	13	18	14	20
Resolved (-)	12	20	13	7	7	9	13	13	19	6	14	16	10
<b>End Pending</b>	<b>34</b>	<b>29</b>	<b>27</b>	<b>28</b>	<b>41</b>	<b>44</b>	<b>43</b>	<b>40</b>	<b>38</b>	<b>49</b>	<b>51</b>	<b>50</b>	<b>56</b>
<b>End Pending- DV Subset</b>	<b>NA</b>	<b>NA</b>	<b>NA</b>	<b>NA</b>	<b>NA</b>	<b>NA</b>	<b>NA</b>	<b>NA</b>	<b>NA</b>	<b>NA</b>	<b>NA</b>	<b>2</b>	<b>2</b>
<b>Controlled Substance - Non Drug Court <sup>(1)</sup></b>													
Previous Pending	360	312	397	402	445	549	516	495	468	463	494	498	507
Resolved (-)	104	102	96	87	103	108	105	97	88	87	92	101	82
<b>End Pending</b>	<b>312</b>	<b>397</b>	<b>402</b>	<b>445</b>	<b>549</b>	<b>516</b>	<b>495</b>	<b>468</b>	<b>463</b>	<b>494</b>	<b>498</b>	<b>507</b>	<b>516</b>
<b>End Pending- DV Subset</b>	<b>NA</b>	<b>NA</b>	<b>NA</b>	<b>NA</b>	<b>NA</b>	<b>NA</b>	<b>NA</b>	<b>NA</b>	<b>NA</b>	<b>NA</b>	<b>NA</b>	<b>2</b>	<b>2</b>
<b>Drug Court <sup>(2)</sup></b>													
Previous Pending	316	312	315	308	289	274	259	254	249	246	247	253	242
New Filing (+)	12	21	0	13	15	17	12	11	19	11	14	18	20
Resolved (-)	14	24	30	34	36	34	23	18	24	15	5	29	20
<b>End Pending</b>	<b>312</b>	<b>315</b>	<b>308</b>	<b>289</b>	<b>274</b>	<b>259</b>	<b>254</b>	<b>249</b>	<b>246</b>	<b>247</b>	<b>253</b>	<b>242</b>	<b>241</b>
<b>End Pending- DV Subset</b>	<b>NA</b>	<b>NA</b>	<b>NA</b>	<b>NA</b>	<b>NA</b>	<b>NA</b>	<b>NA</b>	<b>NA</b>	<b>NA</b>	<b>NA</b>	<b>NA</b>	<b>2</b>	<b>2</b>

(\*) Information from filing to the reporting time is used to determine crime category for pending cases. The category for a case in this table is the highest crime category since filing. For example, a case initially charged with homicide is reported as a homicide regardless of whether or not the charge is reduced since filing. On the other hand, if the charge for a case is upgraded later, then the reporting category in later reports will reflect the upgraded (higher) crime category.

Reflects all documents received by **03/15/2011**. Drug court cases are identified by docket code "ORPAR" (Order for Participation).

DV Subset includes cases with a DV flag in at least one of the charges within the specific crime category at the time of the reporting.

Table 5 (Cont.). Pending Criminal Cases  
King County Superior Court

Crime Category <sup>(*)</sup>	Feb 2010	Mar 2010	Apr 2010	May 2010	Jun 2010	Jul 2010	Aug 2010	Sep 2010	Oct 2010	Nov 2010	Dec 2010	Jan 2011	Feb 2011
<b>Other/Misdemeanor</b>													
Previous Pending	343	357	376	380	362	392	356	376	363	374	389	403	377
New Filing (+)	96	100	76	87	92	93	96	88	115	101	96	83	97
Resolved (-)	82	83	87	101	86	99	84	97	98	78	90	111	91
<b>End Pending</b>	<b>357</b>	<b>376</b>	<b>380</b>	<b>362</b>	<b>392</b>	<b>356</b>	<b>376</b>	<b>363</b>	<b>374</b>	<b>389</b>	<b>403</b>	<b>377</b>	<b>373</b>
<b>End Pending- DV Subset</b>	<b>NA</b>	<b>NA</b>	<b>NA</b>	<b>NA</b>	<b>NA</b>	<b>NA</b>	<b>NA</b>	<b>NA</b>	<b>NA</b>	<b>NA</b>	<b>NA</b>	<b>50</b>	<b>49</b>
<b>Criminal RALJ</b>													
Previous Pending	166	158	160	162	170	161	148	150	141	128	134	127	129
New Filing (+)	15	15	15	19	15	7	18	14	17	15	14	20	18
Resolved (-)	24	14	12	11	24	18	15	23	30	9	22	20	14
<b>End Pending</b>	<b>158</b>	<b>160</b>	<b>162</b>	<b>170</b>	<b>161</b>	<b>148</b>	<b>150</b>	<b>141</b>	<b>128</b>	<b>134</b>	<b>127</b>	<b>129</b>	<b>133</b>
<b>Total Pending Caseload</b>													
SEA (%)	57%	60%	58%	59%	60%	60%	59%	58%	59%	60%	59%	59%	58%
KNT (%)	43%	40%	42%	41%	40%	40%	41%	42%	41%	40%	41%	41%	42%

(\*) Information from filing to the reporting time is used to determine crime category for pending cases. The category for a case in this table is the highest crime category since filing. For example, a case initially charged with homicide is reported as a homicide regardless of whether or not the charge is reduced since filing. On the other hand, if the charge for a case is upgraded later, then the reporting category in later reports will reflect the upgraded (higher) crime category.

Reflects all documents received by **03/15/2011**. Drug court cases are identified by docket code "ORPAR" (Order for Participation).

DV Subset includes cases with a DV flag in at least one of the charges within the specific crime category at the time of the reporting.

Table 6. Age of Pending Criminal Cases  
King County Superior Court

Crime Category (*)	Feb 2010	Mar 2010	Apr 2010	May 2010	Jun 2010	Jul 2010	Aug 2010	Sep 2010	Oct 2010	Nov 2010	Dec 2010	Jan 2011	Feb 2011
<b>Total</b>													
<b>Age (days)</b>													
Median (50 <sup>th</sup> percentile)	103	93	94	95	84	88	93	105	99	97	96	99	103
95 <sup>th</sup> percentile	716	718	716	707	670	684	690	708	700	686	683	652	662
<b># of Cases in Age Interval</b>													
0 - 60 days (0 - 2 months)	876	991	971	967	1242	1044	976	965	972	1033	991	961	986
61-120 days (3 - 4 months)	480	493	560	629	595	634	726	623	604	597	651	716	643
121-180 days (5 - 6 months)	322	280	298	317	352	384	334	400	424	397	401	339	389
181-270 days (7 - 9 months)	253	276	318	267	263	257	286	308	271	336	367	391	351
> 270 days (> 9 months)	557	555	579	568	546	515	512	505	502	510	507	497	502
<b>DV Subset - Age (days)</b>													
Median (50 <sup>th</sup> percentile)	NA	NA	NA	NA	NA	NA	NA	NA	NA	NA	NA	89	89
95 <sup>th</sup> percentile	NA	NA	NA	NA	NA	NA	NA	NA	NA	NA	NA	412	440
<b># of Cases in Age Interval</b>													
0 - 60 days (0 - 2 months)	NA	NA	NA	NA	NA	NA	NA	NA	NA	NA	NA	161	73
61-120 days (3 - 4 months)	NA	NA	NA	NA	NA	NA	NA	NA	NA	NA	NA	106	26
121-180 days (5 - 6 months)	NA	NA	NA	NA	NA	NA	NA	NA	NA	NA	NA	52	33
181-270 days (7 - 9 months)	NA	NA	NA	NA	NA	NA	NA	NA	NA	NA	NA	51	19
> 270 days (> 9 months)	NA	NA	NA	NA	NA	NA	NA	NA	NA	NA	NA	51	42
<b>Homicide</b>													
<b>Age (days)</b>													
Median (50 <sup>th</sup> percentile)	243	239	225	251	259	256	267	297	289	259	272	293	308
95 <sup>th</sup> percentile	725	756	745	769	806	837	868	898	929	959	990	1021	1049
<b># of Cases in Age Interval</b>													
0 - 60 days (0 - 2 months)	6	9	11	8	6	4	3	4	8	12	7	3	4
61-120 days (3 - 4 months)	13	11	6	7	11	8	6	4	3	2	6	11	6
121-180 days (5 - 6 months)	6	8	11	9	4	7	11	8	6	4	3	2	5
181-270 days (7 - 9 months)	8	8	9	8	10	11	9	7	8	10	10	6	4
> 270 days (> 9 months)	28	30	29	28	28	29	26	31	27	25	26	25	24
<b>Sex Crime</b>													
<b>Age (days)</b>													
Median (50 <sup>th</sup> percentile)	154	129	145	146	120	132	112	116	137	139	152	164	150
95 <sup>th</sup> percentile	572	568	593	568	589	608	625	631	662	671	618	638	629
<b># of Cases in Age Interval</b>													
0 - 60 days (0 - 2 months)	50	65	55	48	76	72	74	72	49	43	45	49	63
61-120 days (3 - 4 months)	49	47	40	50	47	43	65	63	69	62	47	43	46
121-180 days (5 - 6 months)	33	28	41	35	33	42	33	34	51	50	56	43	33
181-270 days (7 - 9 months)	36	39	30	30	29	33	36	36	36	35	49	59	56
> 270 days (> 9 months)	59	60	61	59	56	48	55	53	51	57	53	52	49
<b>DV Subset - Age (days)</b>													
Median (50 <sup>th</sup> percentile)	NA	NA	NA	NA	NA	NA	NA	NA	NA	NA	NA	189	173
95 <sup>th</sup> percentile	NA	NA	NA	NA	NA	NA	NA	NA	NA	NA	NA	785	813
<b># of Cases in Age Interval</b>													
0 - 60 days (0 - 2 months)	NA	NA	NA	NA	NA	NA	NA	NA	NA	NA	NA	9	4
61-120 days (3 - 4 months)	NA	NA	NA	NA	NA	NA	NA	NA	NA	NA	NA	5	0
121-180 days (5 - 6 months)	NA	NA	NA	NA	NA	NA	NA	NA	NA	NA	NA	8	6
181-270 days (7 - 9 months)	NA	NA	NA	NA	NA	NA	NA	NA	NA	NA	NA	12	6
> 270 days (> 9 months)	NA	NA	NA	NA	NA	NA	NA	NA	NA	NA	NA	15	11
<b>Robbery</b>													
<b>Age (days)</b>													
Median (50 <sup>th</sup> percentile)	75	65	71	77	84	86	104	107	104	106	87	84	73
95 <sup>th</sup> percentile	293	315	339	330	351	355	360	339	370	412	431	375	391
<b># of Cases in Age Interval</b>													
0 - 60 days (0 - 2 months)	84	89	86	64	81	62	57	59	57	60	66	70	72
61-120 days (3 - 4 months)	34	52	55	54	58	46	40	37	39	25	30	42	44
121-180 days (5 - 6 months)	29	21	19	31	33	31	31	26	25	27	26	14	17
181-270 days (7 - 9 months)	19	23	14	8	14	21	25	35	25	20	23	22	19
> 270 days (> 9 months)	16	18	22	19	18	13	14	13	20	27	27	23	20

(\*) The highest crime category since filing is used to classify cases. For example, a case initially charged with homicide is reported as a homicide regardless of whether or not the charge is reduced since filing. On the other hand, if the charge for a case is upgraded later, then the reporting category in later reports will reflect the upgraded (higher) crime category.

Reflects all documents received by 03/15/2011.

- (1) "Controlled Substance - Non Drug Court" are drug related cases that have never been accepted into drug court.
- (2) "Controlled Substance - Drug Court" are drug related cases that have been formally accepted into drug court (identified by "Order of Participation").
- (3) DV Subset includes cases with a DV flag in at least one of the charges within the specific crime category at the time of the reporting.

Table 6 (cont.). Age of Pending Criminal Cases  
King County Superior Court

Crime Category (*)	Feb 2010	Mar 2010	Apr 2010	May 2010	Jun 2010	Jul 2010	Aug 2010	Sep 2010	Oct 2010	Nov 2010	Dec 2010	Jan 2011	Feb 2011
<b>Aggravated Assault</b>													
<b>Age (days)</b>													
Median (50 <sup>th</sup> percentile)	74	64	67	69	64	66	77	70	70	72	78	83	89
95 <sup>th</sup> percentile	356	332	315	294	313	290	310	302	326	343	339	327	356
<b># of Cases in Age Interval</b>													
0 - 60 days (0 - 2 months)	192	222	212	213	254	239	213	233	213	224	206	190	174
61-120 days (3 - 4 months)	108	105	108	136	124	121	145	121	112	122	129	151	122
121-180 days (5 - 6 months)	59	51	51	55	66	76	67	67	67	65	71	65	77
181-270 days (7 - 9 months)	53	46	53	35	43	36	44	57	43	57	51	53	43
> 270 days (> 9 months)	39	39	31	33	33	32	31	36	41	42	43	43	50
<b>DV Subset - Age (days)</b>													
Median (50 <sup>th</sup> percentile)	NA	NA	NA	NA	NA	NA	NA	NA	NA	NA	NA	81	85
95 <sup>th</sup> percentile	NA	NA	NA	NA	NA	NA	NA	NA	NA	NA	NA	340	368
<b># of Cases in Age Interval</b>													
0 - 60 days (0 - 2 months)	NA	NA	NA	NA	NA	NA	NA	NA	NA	NA	NA	110	49
61-120 days (3 - 4 months)	NA	NA	NA	NA	NA	NA	NA	NA	NA	NA	NA	74	21
121-180 days (5 - 6 months)	NA	NA	NA	NA	NA	NA	NA	NA	NA	NA	NA	34	20
181-270 days (7 - 9 months)	NA	NA	NA	NA	NA	NA	NA	NA	NA	NA	NA	33	10
> 270 days (> 9 months)	NA	NA	NA	NA	NA	NA	NA	NA	NA	NA	NA	26	24
<b>Burglary/Theft/Larceny</b>													
<b>Age (days)</b>													
Median (50 <sup>th</sup> percentile)	68	64	68	71	65	73	72	72	68	71	80	84	82
95 <sup>th</sup> percentile	408	395	382	397	407	429	421	422	410	415	347	349	358
<b># of Cases in Age Interval</b>													
0 - 60 days (0 - 2 months)	241	236	223	232	259	224	229	236	261	245	235	249	238
121-180 days (5 - 6 months)	101	115	126	139	134	142	144	134	141	161	184	174	159
61-120 days (3 - 4 months)	69	55	47	61	74	80	59	79	75	79	83	86	103
181-270 days (7 - 9 months)	42	50	57	37	38	36	50	42	46	55	59	65	64
> 270 days (> 9 months)	52	51	50	55	52	55	49	53	51	51	50	59	60
<b>DV Subset - Age (days)</b>													
Median (50 <sup>th</sup> percentile)	NA	NA	NA	NA	NA	NA	NA	NA	NA	NA	NA	45	43
95 <sup>th</sup> percentile	NA	NA	NA	NA	NA	NA	NA	NA	NA	NA	NA	349	377
<b># of Cases in Age Interval</b>													
0 - 60 days (0 - 2 months)	NA	NA	NA	NA	NA	NA	NA	NA	NA	NA	NA	16	7
61-120 days (3 - 4 months)	NA	NA	NA	NA	NA	NA	NA	NA	NA	NA	NA	8	3
121-180 days (5 - 6 months)	NA	NA	NA	NA	NA	NA	NA	NA	NA	NA	NA	1	0
181-270 days (7 - 9 months)	NA	NA	NA	NA	NA	NA	NA	NA	NA	NA	NA	1	0
> 270 days (> 9 months)	NA	NA	NA	NA	NA	NA	NA	NA	NA	NA	NA	2	2
<b>Motor Vehicle Theft</b>													
<b>Age (days)</b>													
Median (50 <sup>th</sup> percentile)	69	57	31	40	37	48	54	51	44	48	47	58	54
95 <sup>th</sup> percentile	206	237	267	298	169	181	212	252	318	303	310	235	263
<b># of Cases in Age Interval</b>													
0 - 60 days (0 - 2 months)	16	16	17	20	28	28	23	22	21	31	28	26	30
61-120 days (3 - 4 months)	12	5	5	4	8	12	14	12	9	10	11	14	13
121-180 days (5 - 6 months)	4	5	2	2	4	1	2	2	3	4	7	5	5
181-270 days (7 - 9 months)	2	2	2	0	0	2	3	3	1	0	2	3	6
> 270 days (> 9 months)	0	1	1	2	1	1	1	1	4	4	3	2	2

(\*) The highest crime category since filing is used to classify cases. For example, a case initially charged with homicide is reported as a homicide regardless of whether or not the charge is reduced since filing. On the other hand, if the charge for a case is upgraded later, then the reporting category in later reports will reflect the upgraded (higher) crime category.

Reflects all documents received by 03/15/2011.

- (1) "Controlled Substance - Non Drug Court" are drug related cases that have never been accepted into drug court.
- (2) "Controlled Substance - Drug Court" are drug related cases that have been formally accepted into drug court (identified by "Order of Participation").
- (3) DV Subset includes cases with a DV flag in at least one of the charges within the specific crime category at the time of the reporting.

Table 6 (cont.) . Age of Pending Criminal Cases  
King County Superior Court

Crime Category (*)	Feb 2010	Mar 2010	Apr 2010	May 2010	Jun 2010	Jul 2010	Aug 2010	Sep 2010	Oct 2010	Nov 2010	Dec 2010	Jan 2011	Feb 2011
<b>Controlled Substance - Non Drug Court<sup>(1)</sup></b>													
<b>Age (days)</b>	89	62	65	65	49	61	79	91	89	71	72	84	83
Median (50 <sup>th</sup> percentile)	548	506	449	424	352	367	404	416	419	429	445	398	346
95 <sup>th</sup> percentile													
<b># of Cases in Age Interval</b>	135	197	185	211	330	254	198	160	171	223	212	195	208
0 - 60 days (0 - 2 months)	88	76	94	110	102	142	182	147	116	92	113	146	134
61-120 days (3 - 4 months)	48	41	42	45	47	59	48	88	99	90	66	37	58
121-180 days (5 - 6 months)	37	37	36	38	27	20	26	31	34	48	67	87	70
181-270 days (7 - 9 months)	51	46	45	41	43	41	41	42	43	41	40	42	46
> 270 days (> 9 months)													
<b>Drug Court<sup>(2)</sup></b>													
<b>Age (days)</b>													
Median (50 <sup>th</sup> percentile)	547	564	578	575	570	541	547	535	510	519	508	493	442
95 <sup>th</sup> percentile	1089	1087	1072	1092	1124	1120	1150	1190	1221	1241	1272	1253	1281
<b># of Cases in Age Interval</b>													
0 - 60 days (0 - 2 months)	0	0	1	1	0	1	1	0	0	0	0	0	1
61-120 days (3 - 4 months)	3	6	6	5	4	5	8	4	5	2	3	4	6
121-180 days (5 - 6 months)	13	12	8	11	14	10	11	10	22	12	8	7	12
181-270 days (7 - 9 months)	25	30	31	30	29	27	24	30	21	38	37	43	34
> 270 days (> 9 months)	271	267	262	242	227	216	210	205	198	195	205	188	188
<b>Others/Misdemeanor</b>													
<b>Age (days)</b>													
Median (50 <sup>th</sup> percentile)	77	78	77	85	76	79	89	80	75	76	75	84	75
95 <sup>th</sup> percentile	431	430	431	447	456	487	461	470	447	477	429	302	481
<b># of Cases in Age Interval</b>													
0 - 60 days (0 - 2 months)	152	157	151	137	174	139	154	147	164	167	163	145	160
61-120 days (3 - 4 months)	72	76	95	93	78	83	92	83	83	86	101	104	86
121-180 days (5 - 6 months)	61	59	46	39	51	47	45	52	47	50	54	48	52
181-270 days (7 - 9 months)	31	41	46	46	39	40	33	36	30	36	38	33	31
> 270 days (> 9 months)	41	43	42	47	50	47	52	45	50	50	47	47	44
<b>DV Subset - Age (days)</b>													
Median (50 <sup>th</sup> percentile)	NA	NA	NA	NA	NA	NA	NA	NA	NA	NA	NA	86	81
95 <sup>th</sup> percentile	NA	NA	NA	NA	NA	NA	NA	NA	NA	NA	NA	272	300
<b># of Cases in Age Interval</b>													
0 - 60 days (0 - 2 months)	NA	NA	NA	NA	NA	NA	NA	NA	NA	NA	NA	17	12
61-120 days (3 - 4 months)	NA	NA	NA	NA	NA	NA	NA	NA	NA	NA	NA	19	1
121-180 days (5 - 6 months)	NA	NA	NA	NA	NA	NA	NA	NA	NA	NA	NA	8	6
181-270 days (7 - 9 months)	NA	NA	NA	NA	NA	NA	NA	NA	NA	NA	NA	3	2
> 270 days (> 9 months)	NA	NA	NA	NA	NA	NA	NA	NA	NA	NA	NA	3	2
<b>Criminal RALJ</b>													
<b>Age (days)</b>													
Median (50 <sup>th</sup> percentile)	158	172	171	166	153	160	162	151	145	145	128	123	130
95 <sup>th</sup> percentile	468	429	458	489	479	480	478	508	490	419	373	397	425
<b># of Cases in Age Interval</b>													
0 - 60 days (0 - 2 months)	29	30	30	33	34	21	24	32	28	28	29	34	36
61-120 days (3 - 4 months)	28	29	25	31	29	32	30	18	27	35	27	27	27
121-180 days (5 - 6 months)	31	27	31	29	26	31	27	34	29	16	27	32	27
181-270 days (7 - 9 months)	36	35	40	35	34	31	36	31	27	37	31	20	24
> 270 days (> 9 months)	34	39	36	42	38	33	33	26	17	18	13	16	19

(\*) The highest crime category since filing is used to classify cases. For example, a case initially charged with homicide is reported as a homicide regardless of whether or not the charge is reduced since filing. On the other hand, if the charge for a case is upgraded later, then the reporting category in later reports will reflect the upgraded (higher) crime category.

Reflects all documents received by 03/15/2011.

- (1) "Controlled Substance - Non Drug Court" are drug related cases that have never been accepted into drug court.
- (2) "Controlled Substance - Drug Court" are drug related cases that have been formally accepted into drug court (identified by "Order of Participation").
- (3) DV Subset includes cases with a DV flag in at least one of the charges within the specific crime category at the time of the reporting.

Table 7. Comparison between SEA/KNT: Filings, Resolutions, and Pending Caseload  
King County Superior Court

	Mar 2010	Apr 2010	May 2010	Jun 2010	Jul 2010	Aug 2010	Sep 2010	Oct 2010	Nov 2010	Dec 2010	Jan 2011	Feb 2011 <sup>(1)</sup>
<b># of Criminal Judges <sup>(2)</sup></b>												
SEA - # of Criminal Judges	15	15	15	15	15	15	15	15	15	15	15	15
KNT - # of Criminal Judges	7	7	7	7	7	7	7	7	7	7	7	7
SEA - Drug Court Judge	1	1	1	1	1	1	1	1	1	1	1	1
<b>Total Filings</b>												
SEA - # of Cases Filed	346	314	377	416	347	358	304	374	352	358	345	296
KNT - # of Cases Filed	249	198	210	250	227	205	228	234	183	253	231	217
SEA %	58%	61%	64%	63%	61%	64%	57%	61%	66%	59%	60%	58%
KNT %	42%	39%	36%	37%	39%	36%	43%	39%	34%	41%	40%	42%
SEA - # of Cases per Judge	22	20	24	26	22	22	20	23	22	22	22	19
KNT - # of Cases per Judge	36	28	30	36	32	29	33	33	26	36	33	31
<b>Total Resolutions</b>												
SEA - # of Cases Resolved	324	351	318	311	351	361	356	355	281	321	346	343
KNT - # of Cases Resolved	220	206	202	209	212	217	191	220	158	187	215	183
SEA - Drug Court Cases Resolved	18	27	27	28	28	18	15	20	11	4	23	15
KNT - Drug Court Cases Resolved	6	3	7	8	6	5	3	4	4	1	6	5
SEA %	57%	60%	58%	56%	59%	60%	62%	59%	62%	63%	59%	63%
KNT %	39%	35%	36%	38%	36%	36%	34%	37%	35%	37%	36%	34%
SEA - Drug Court %	3%	5%	5%	5%	5%	3%	3%	4%	2%	1%	4%	3%
KNT - Drug Court %	1%	1%	1%	1%	1%	1%	1%	1%	1%	0%	1%	1%
SEA - # of Cases per Judge	21	24	22	21	24	24	25	23	18	20	23	22
KNT - # of Cases per Judge	32	30	30	31	31	32	28	32	23	27	32	27
<b>Total Pending</b>												
SEA - # of Cases Pending	1219	1355	1393	1580	1486	1488	1438	1439	1524	1523	1511	1471
KNT - # of Cases Pending	1061	1073	1066	1144	1089	1092	1130	1088	1102	1141	1151	1159
SEA - Drug Court Cases Pending	252	234	224	213	200	195	191	191	193	200	188	190
KNT - Drug Court Cases Pending	63	64	65	61	59	59	58	55	54	53	54	51
SEA %	47%	50%	51%	53%	52%	53%	51%	52%	53%	52%	52%	51%
KNT %	41%	39%	39%	38%	39%	39%	41%	39%	38%	39%	40%	40%
SEA - Drug Court %	10%	9%	8%	7%	7%	7%	7%	7%	7%	7%	6%	7%
KNT - Drug Court %	3%	2%	2%	2%	2%	2%	2%	2%	2%	2%	2%	2%
SEA - # of Cases per Judge	92	99	101	112	105	105	109	102	107	108	106	104
KNT - # of Cases per Judge	161	162	162	172	164	164	167	163	165	170	172	173

(1) Reflects all documents received by 03/15/2011.

(2) The number of judges does not include RJC chief judge and the criminal chief judge at SEA.

Table 8. Drug Court Statistics

King County Superior Court

Categories	Mar 2010	Apr 2010	May 2010	Jun 2010	Jul 2010	Aug 2010	Sep 2010	Oct 2010	Nov 2010	Dec 2010	Jan 2011	Feb 2011
Referrals - Total	29	23	50	40	28	28	29	48	52	52	62	50
Directly from PA	13	14	40	28	13	13	15	26	41	35	50	37
From Mainstream	16	9	10	12	15	15	14	22	11	17	12	13
Arraignments in Drug Court <sup>(1)</sup>	15	10	14	26	8	8	8	23	34	21	34	30
GP in Drug Court <sup>(2)</sup>	1	2	3	4	3	4	4	6	2	4	6	3
Return to mainstream <sup>(3)</sup>	10	19	19	14	10	10	9	15	13	28	25	24
Opt-in <sup>(4)</sup>	21	10	13	14	12	12	11	19	11	14	18	20
Graduations <sup>(5)</sup>	16	17	18	20	18	18	10	20	10	1	22	15
Terminations <sup>(6)</sup>	9	13	16	16	5	5	8	4	5	4	7	5

- (1) Arraignments held in drug court regardless opt-in status of the cases.
- (2) Guilty pleas entered in drug court before opt-in.
- (3) Referred to drug court but decision by court order to go to mainstream.
- (4) Opt-in reflects the court order of participation.
- (5) Graduations are dismissals of opted-in cases after the completion of program.
- (6) Terminations are cases that fail in drug court.