

Julia Patterson Welcomes You To District 5

Dear Neighbor,

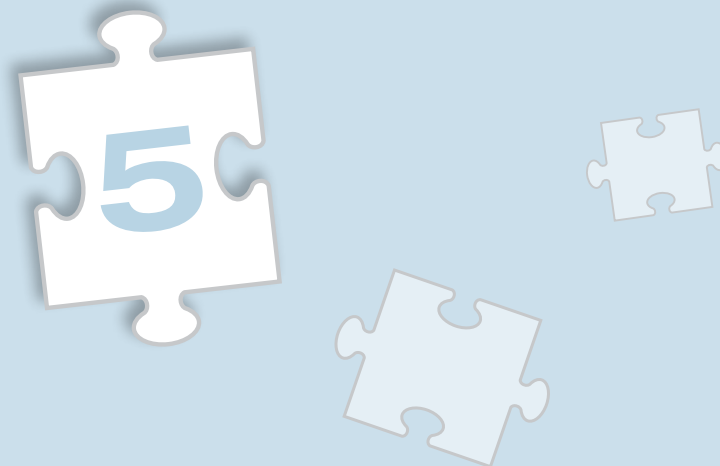
Welcome to King County Council District 5! By law, every ten years King County Council districts must be redrawn to reflect changes in the population of the county. This process of “redistricting” ensures that every county resident is represented fairly throughout King County government.

To help guide this process, a five member Districting Committee was appointed by the County Council in January of 2011. The committee used US census data to redraw the boundaries of each King County Council district. On November 15, 2011, after multiple public hearings, the Districting Committee adopted this new plan into law. As a result of this process, you are now a new constituent of King County Council District 5.

If you have questions, please contact my office via the information inside this page.

Sincerely,

Julia Patterson



Welcome to Council District 5!



516 Third Ave, Room 1200
Seattle, WA 98104-3272
T: 206.296.1005 F: 206.296.1050

PRSRT STD
US Postage
PAID
Seattle, WA
Permit No. 1788



King County Councilmember
Julia Patterson



**Redistricting the
King County Council**

Your Guide to King County Services

King County is the 14th most populous county in the nation and the second largest government in Washington State. With almost two million people living within 2,134 square miles, King County has a population larger than 14 states and covers more territory than the state of Delaware.

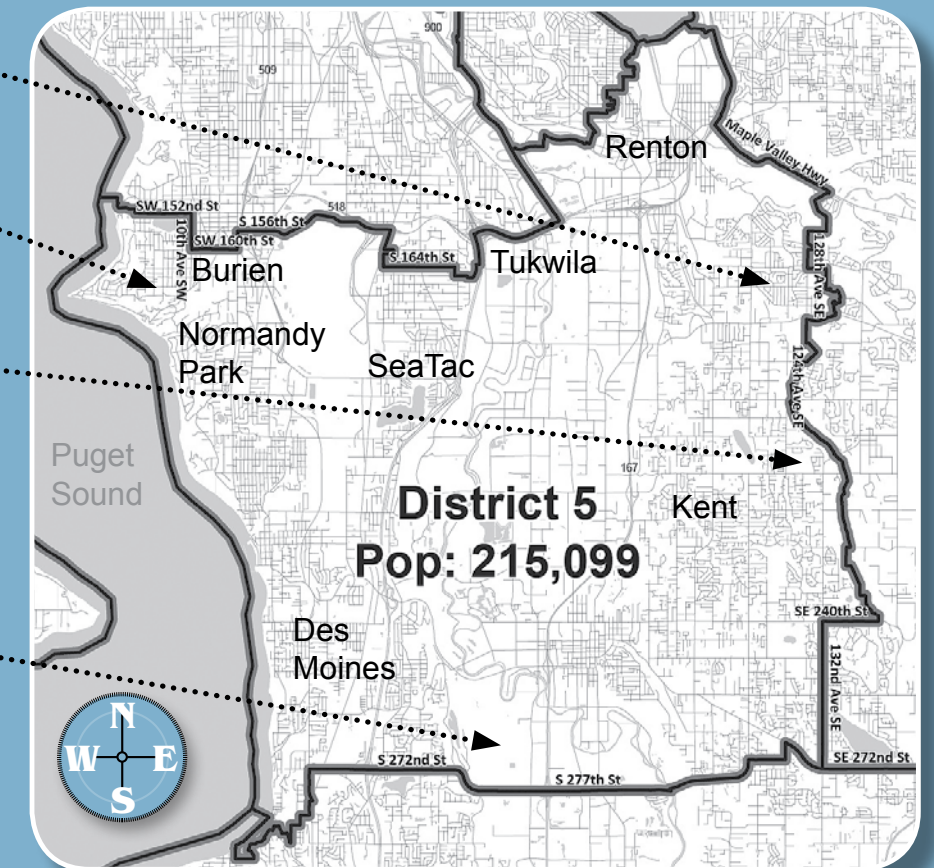
Dedicated employees provide quality regional services every day to county residents. The county is also the local government for the 305,000 people who live in the urban and rural unincorporated areas. The county also provides police services by contract to several of the county's 39 cities. County-wide services include:

- the **criminal justice system** of prosecutors and public defenders, District and Superior Courts, juvenile detention and adult jails;
- the **King County Sheriff's Office**, which directly serves residents of unincorporated areas and contracts with many cities to provide police protection;
- **public health**, which includes restaurant inspections, tracking diseases, and maternity support services for low-income mothers;
- **human services**, like support for domestic violence victims, food banks and shelter services;
- **Metro Transit bus service** and county roads;
- **wastewater treatment and solid waste management**;
- **regional parks, open space and trails**;
- **elections, records, and licensing**;
- **and much more.**

Notable Changes in Redistricting

On November 15, 2011, the King County Districting Committee adopted new King County Council Districts into law. This map highlights the notable changes in District 5.

- Portions of southeast Renton will join District 5.
- Normandy Park and a southern portion of Burien will now join District 5.
- The eastern edge of Kent along 124th Avenue SE and 132nd Avenue SE will join District 5.
- Portions of unincorporated King County near Kent and Lake Fenwick will join District 5.



Contact Information for Councilmember Patterson

516 Third Avenue, Room 1200, Seattle, WA 98104 □ 206-296-1005 □ Fax 206-296-1050
□ julia.patterson@kingcounty.gov □ www.kingcounty.gov/patterson

Guiding us through a changing District

COUNCILMEMBER
JULIA PATTERSON
KING COUNTY COUNCIL, DIST 5